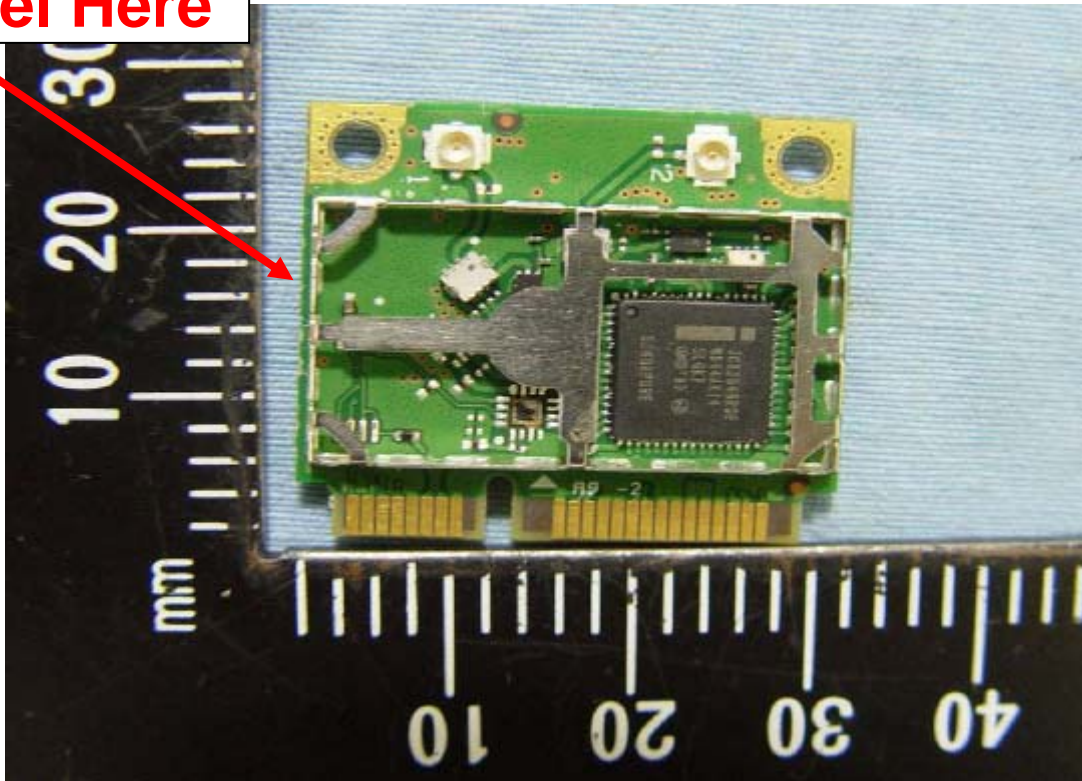


Label Here



Getac Technology Corp.

WLAN Module

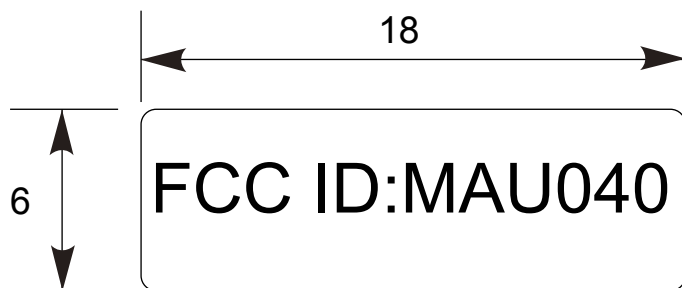
Model No: WiFi Link 6200

FCC ID:MAU040



model name:

TOL ±			✓															
RANGE	P1a	Met	Ins	Por	Cab	Pac	Gas	PCB										
0-6	0.1	0.1	0.1	0.2	0.5	1	0.5	0.1										/ /
6-30	0.1	0.1	.15	.25	1	1	0.5	0.1										/ /
30-80	0.1	.15	0.2	0.3	2	1.5	1	0.1										/ /
80-180	.15	.15	.25	0.3	2	2	1	.15										/ /
180-315	.15	0.2	0.3	0.4	2.5	2	1	.15										/ /
315-800	0.2	0.3	0.4	0.5	3	3	2	.15	ITEM	CONTENTS OF CHANGE			RVS	CHK	APV	M/D/Y		



NOTES:

1. MATERIAL:變色反銀龍50# +PP20.
2. COLOR:銀色底黑色字
3. 背膠類型:壓克力膠
4. 厚度:0.1mm
5. 黏性:黏著力為 1.5kg/25mm 以上
6. 表面:光滑面
7. 貼附位置:安規標籤上
8. 環測項目及條件.(判定標準follow "系統表面處理的測試規範")

DATE	13-Aug-10	MATERIAL	SEE NOTES	TREATMENT		PROJECTION		
UNIT	MM	SCALE	4/1	DRAWING NAME	TF1-LABEL;FCC ID,18x6,MAU041,BT,V200X			
DESIGNED	CHECKED	CHECKED	APPROVED	MATERIAL NO.	MF	242125600005		R 00
<i>Getac Technology Corp.</i>								

file name:

A B C D E F

1

2

3

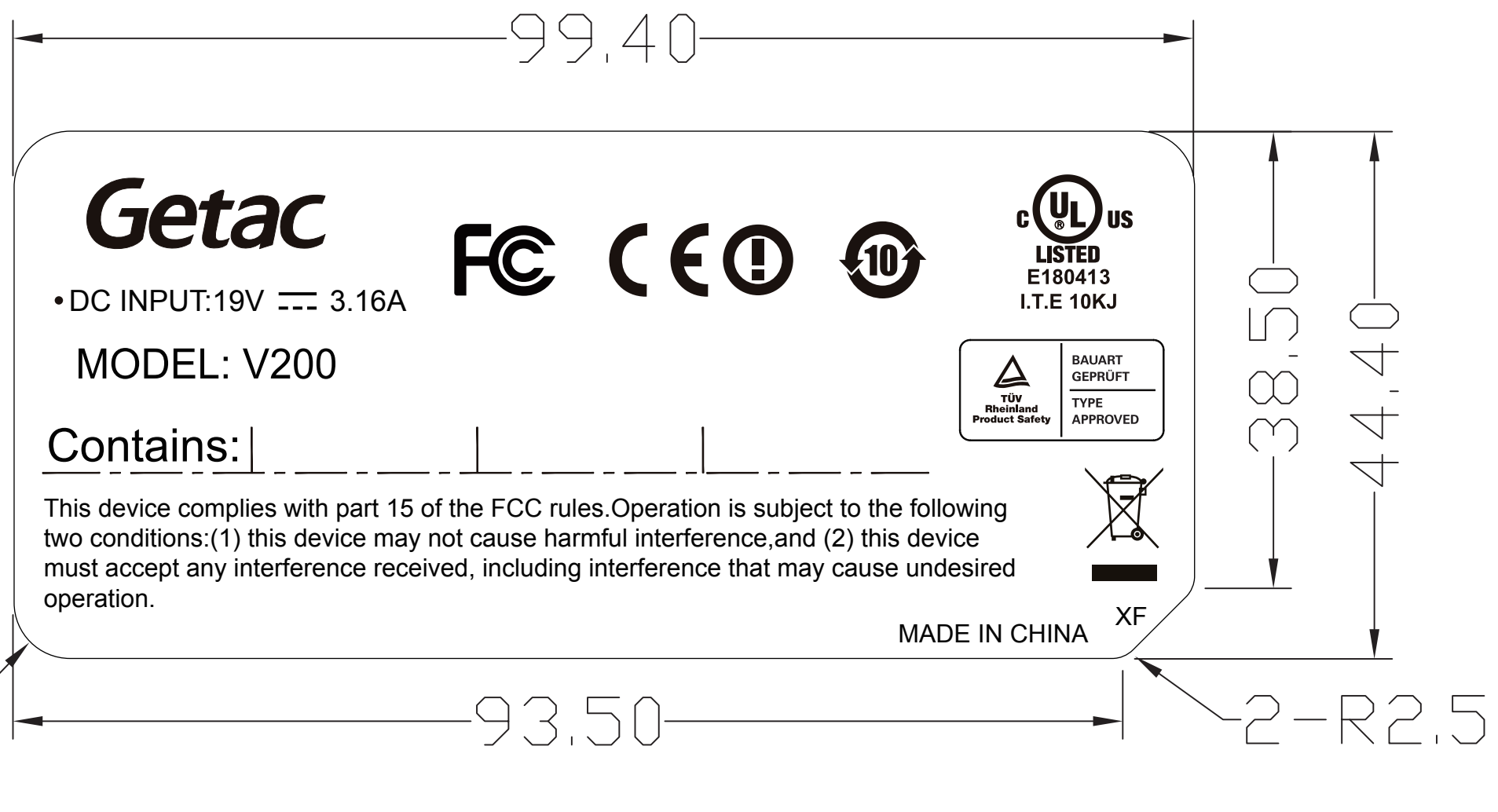
4

1

2

3

4



Getac

• DC INPUT: 19V 3.16A

MODEL: V200

Contains:

This device complies with part 15 of the FCC rules. Operation is subject to the following two conditions: (1) this device may not cause harmful interference, and (2) this device must accept any interference received, including interference that may cause undesired operation.



MADE IN CHINA

XF

3-R4.7

2-R2.5

NOTES:

1. 材質: 變色反銀龍50#+透明特多龍#25.
T=0.1MM. 背膠: 壓克力膠
2. 印刷字體顏色: 黑色.
3. 請指定符合安規認證廠商製作.

				TOL ±								DATE		MATERIAL		SEE NOTES		TREATMENT		PROJECTION		
				RANGE		Pla	Met	Ins	Por	Cab	Pac	Gas	PCB	UNIT	SCALE	DRAWING NAME						
				0~6	0.1	0.1	0.1	0.2	0.5	1	0.5	0.1		MM	2/1	TF1-LABEL;SAFETY LABEL,NEW GETAC LOGO,V200-X						
				6~30	0.1	0.1	.15	.25	1	1	0.5	0.1				MATERIAL NO.		MF	242125600001	R	00	
				30~80	0.1	.15	0.2	0.3	2	1.5	1	0.1										
				80~180	.15	.15	.25	0.3	2	2	1	.15										
				180~315	.15	0.2	0.3	0.4	2.5	2	1	.15										
				315~800	0.2	0.3	0.4	0.5	3	3	2	.15										
ITEM	CONTENTS OF CHANGE			RVS	CHK	APV	M/D/Y						Getac Technology Corp.									

A

B

C

D

E

SHEET No. 1 of 1

model name:

file name:

Label Format

**“Contains Transmitter Module FCC ID:MAU040” or
“Contains FCC ID: MAU040”**

Label Here (Host)

