



JOINSOON ELECTRONICS MFG. CO., LTD.

建舜電子製造股份有限公司

承認書

APPROVAL SHEET

客戶名稱 (CUSTOMER): MITAC

品名 (DESCRIPTION): MITAC A790 WWAN-L Antenna

品號 (PART NO): IA-060242 客戶料號:313002000278

承認號碼 (APPROVAL SHEET NO): 060105

客戶承認 (CUSTOMER APPROVAL)

H/W 1
2007.07.12
涂忠祺





建舜電子製造股份有限公司

JOINSOON ELECTRONICS MFG. CO., LTD

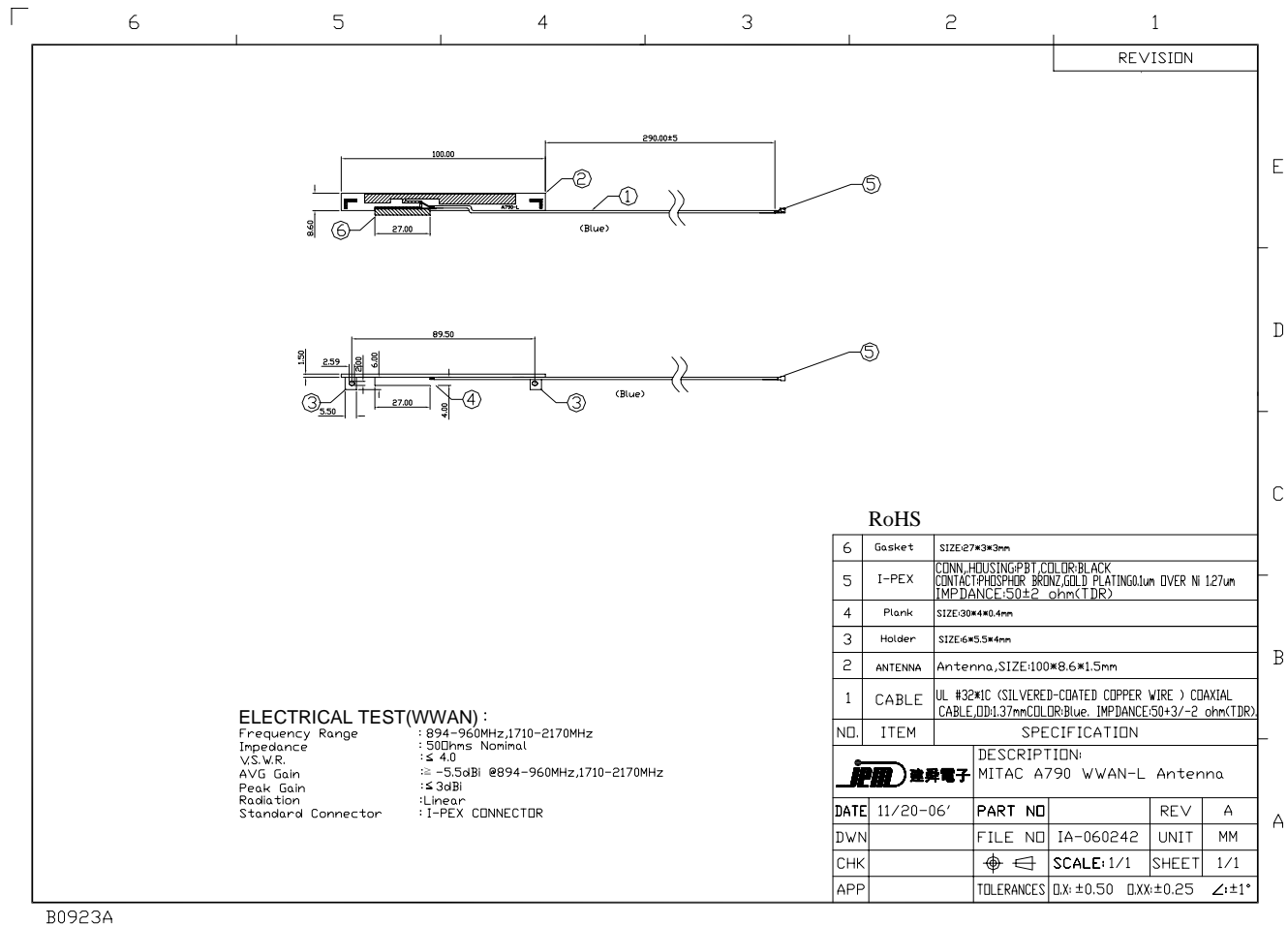
目錄

INDEX

| | |
|--------------------------------|----|
| 1.Coverage | 1 |
| 2.Product Drawing..... | 2 |
| 3. Quick reference data..... | 3 |
| 4.Test Results..... | 4 |
| 5.Material Identification..... | NA |

| | | | | |
|------------------------------|---------------------------|-------------|---|-------------------------|
| 承認序號 (APPROVAL SHEET NO.) | APP-Q060105 | | | 發行日期 (RELEASED DATE) |
| 品名規格 (DESCRIPTION) | MITAC A790 WWAN-L Antenna | | | |
| 檔案號碼 (FILE NO.) | IA-060242 | 版次 (REV) | A | |
| 工程師 (ENGINEER) | | | | |
| 品保確認 (QC. CHK.) | | | | |
| 工程確認 (ENG. CHK.) | | | | |
| | | | | |

一、成品圖





QUICK REFERENCE DATA

Antenna Patch Dimension 100*8.6*1.5 mm Antenna

Cable Length 290mm, Color Blue

Connector I-PEX

Peak Gain ≤ 3.0 dBi

VSWR ≤ 4.0

Polarization Linear

Impedance 50Ω

Operating Temperature -40~90 °C

Maximum Power 1W



二、 Test results

| A790 Left | | | |
|------------------|--------------------|-------------------|------------------------|
| Frequency | E Total. dB | Efficiency | Efficiency . dB |
| 895000000 | -2.44 | 0.32 | -4.98 |
| 900000000 | -1.93 | 0.35 | -4.56 |
| 915000000 | -1.14 | 0.39 | -4.08 |
| 925000000 | -0.84 | 0.43 | -3.70 |
| 940000000 | -1.61 | 0.38 | -4.25 |
| 960000000 | -1.89 | 0.32 | -4.97 |
| 1710000000 | -1.93 | 0.24 | -6.20 |
| 1750000000 | -0.68 | 0.31 | -5.07 |
| 1780000000 | -0.82 | 0.32 | -4.90 |
| 1800000000 | -0.10 | 0.34 | -4.71 |
| 1810000000 | 0.01 | 0.33 | -4.78 |
| 1840000000 | 1.28 | 0.41 | -3.85 |
| 1850000000 | 1.55 | 0.42 | -3.80 |
| 1880000000 | 1.62 | 0.44 | -3.59 |
| 1910000000 | 1.09 | 0.44 | -3.58 |
| 1920000000 | 1.64 | 0.43 | -3.70 |
| 1930000000 | 1.52 | 0.43 | -3.63 |
| 1950000000 | 0.95 | 0.43 | -3.67 |
| 1960000000 | 1.92 | 0.44 | -3.58 |
| 1980000000 | 0.83 | 0.43 | -3.68 |
| 1990000000 | 0.70 | 0.42 | -3.77 |
| 2110000000 | 0.18 | 0.31 | -5.11 |
| 2140000000 | 0.04 | 0.29 | -5.42 |
| 2170000000 | -0.73 | 0.25 | -6.08 |