

# Appendix C

## SAR System Validation Data

*of*

*Product Name*

**Notebook Personal Computer**

*Model*

**V100**

## 1 850 MHz System Validation Data

Report Date : 20-Nov-2007  
Measurement Date : 20-Nov-2007

### Product Data

Device Name : Dipole-835  
Serial No. : Validation  
Type : Dipole  
Model : Standard  
Frequency : 835.00 MHz  
Max. Transmit Pwr : 1 W  
Drift Time : 0 min(s)  
Length : 161 mm  
Width : 3.6 mm  
Depth : 89.8 mm  
Antenna Type : Internal  
Power Drift-Start : 9.021 W/kg  
Power Drift-Finish: 8.952 W/kg  
Power Drift (%) : -0.767

### Phantom Data

Name : APREL-Uni  
Type : Uni-Phantom  
Size (mm) : 280 x 280 x 200  
Location : Center

### Tissue Data

Type : HEAD  
Serial No. : 835HEAD  
Frequency : 835.00 MHz  
Last Calib. Date : 20-Nov-2007  
Temperature : 22.20 °C  
Ambient Temp. : 22.50 °C  
Humidity : 50.00 RH%  
Epsilon : 42.15 F/m  
Sigma : 0.91 S/m  
Density : 1000.00 kg/cu. m

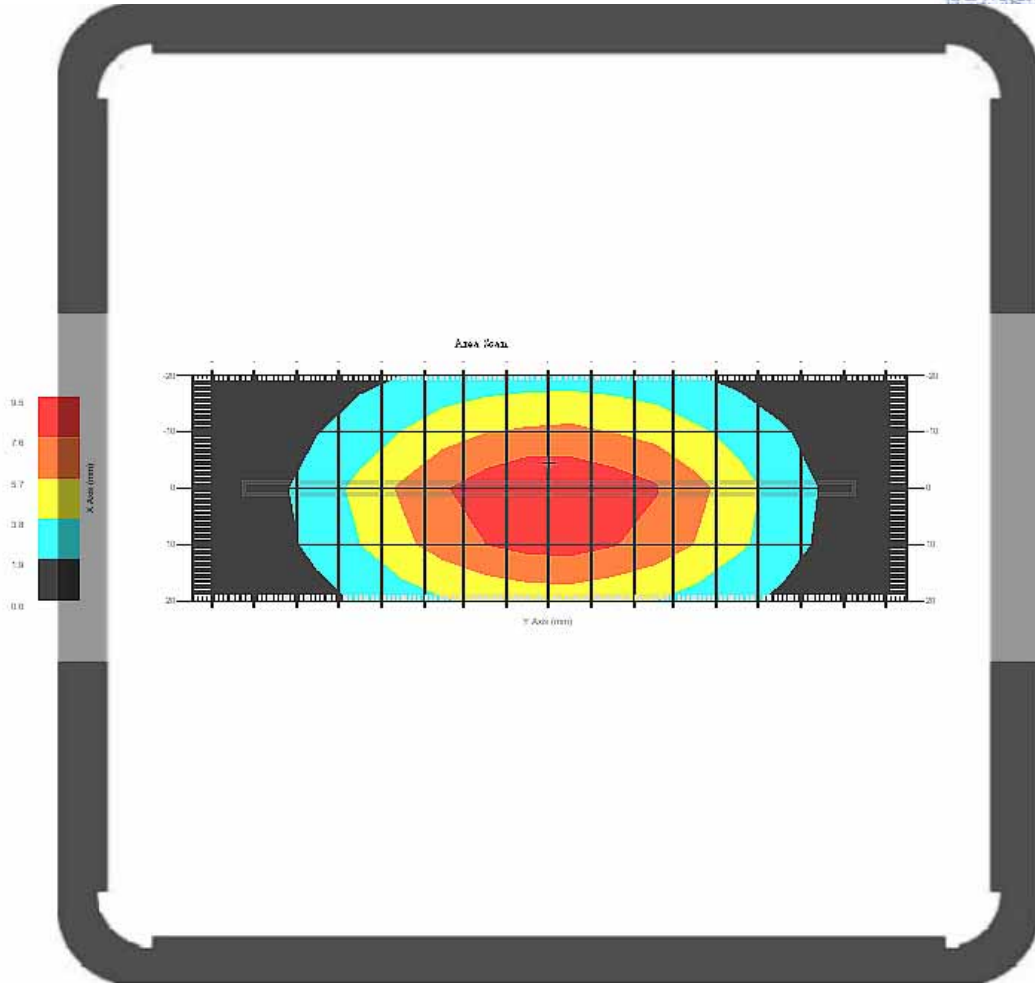
### Probe Data

Name : E-field Probe  
Model : ALS-E-020  
Type : E-Field Triangle  
Serial No. : 266  
Last Calib. Date : 09-Jul-2007  
Frequency : 835.00 MHz  
Duty Cycle Factor: 1  
Conversion Factor: 6.6  
Probe Sensitivity: 1.20 1.20 1.20  $\mu\text{V}/(\text{V}/\text{m})^2$   
Compression Point: 95.00 mV  
Offset : 1.56 mm

### Measurement Data

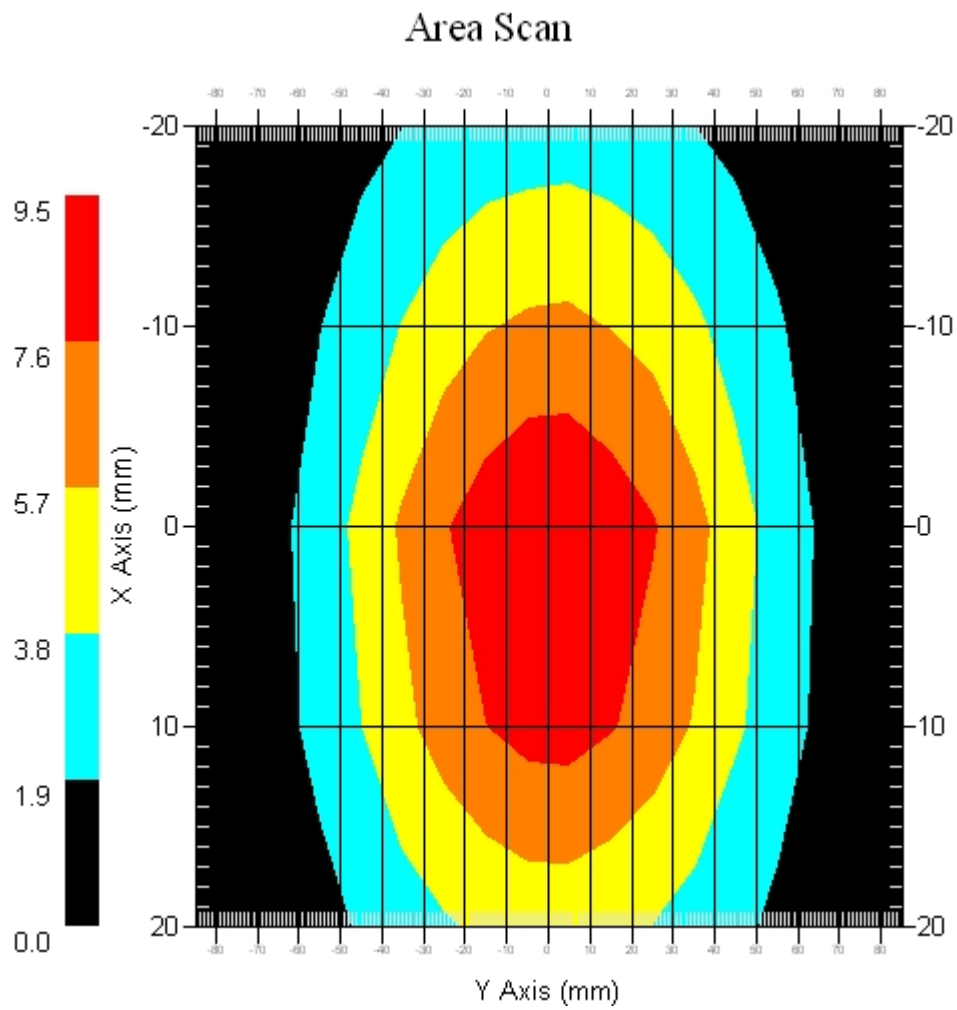
Crest Factor : 1  
Temperature : 22.20 °C  
Ambient Temp. : 22.50 °C  
Set-up Date : 20-NOV-2007  
Area Scan : 5x18x1 : Measurement x=10mm, y=10mm, z=4mm  
Zoom Scan : 5x5x8 : Measurement x=8mm, y=8mm, z=4mm

Channel : Mid

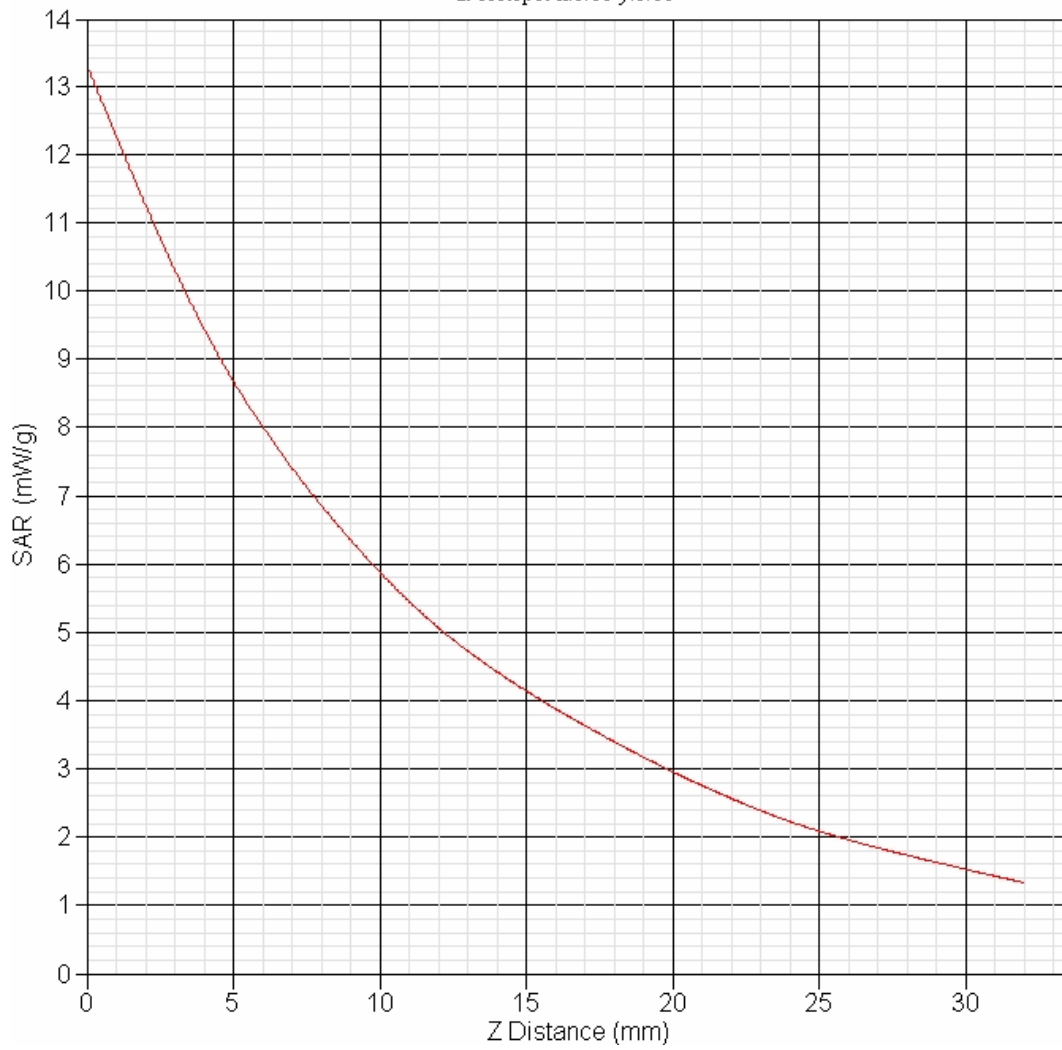


1 gram SAR value : 9.491 W/kg  
10 gram SAR value : 6.364 W/kg  
Area Scan Peak SAR : 10.499 W/kg  
Zoom Scan Peak SAR : 15.312 W/kg

## Area Scan Plot



SAR-Z Axis  
at Hotspot x:0.00 y:0.00



## 2 1900 MHz System Validation Data

Report Date : 21-Nov-2007  
Measurement Date : 21-Nov-2007

### Product Data

Device Name : Dipole-1900  
Serial No. : Validation  
Type : Dipole  
Model : Standard  
Frequency : 1900.00 MHz  
Max. Transmit Pwr : 1 W  
Drift Time : 0 min(s)  
Length : 68 mm  
Width : 3.6 mm  
Depth : 39.5 mm  
Antenna Type : Internal  
Power Drift-Start : 46.820 W/kg  
Power Drift-Finish: 47.024 W/kg  
Power Drift (%) : 0.436

### Phantom Data

Name : APREL-Uni  
Type : Uni-Phantom  
Size (mm) : 280 x 280 x 200  
Location : Center

### Tissue Data

Type : HEAD  
Serial No. : 1900  
Frequency : 1900.00 MHz  
Last Calib. Date : 21-NOV-2007  
Ambient Temp. : 22.10 °C  
Humidity : 51.00 RH%  
Epsilon : 40.00 F/m  
Sigma : 1.41 S/m  
Density : 1000.00 kg/cu. m

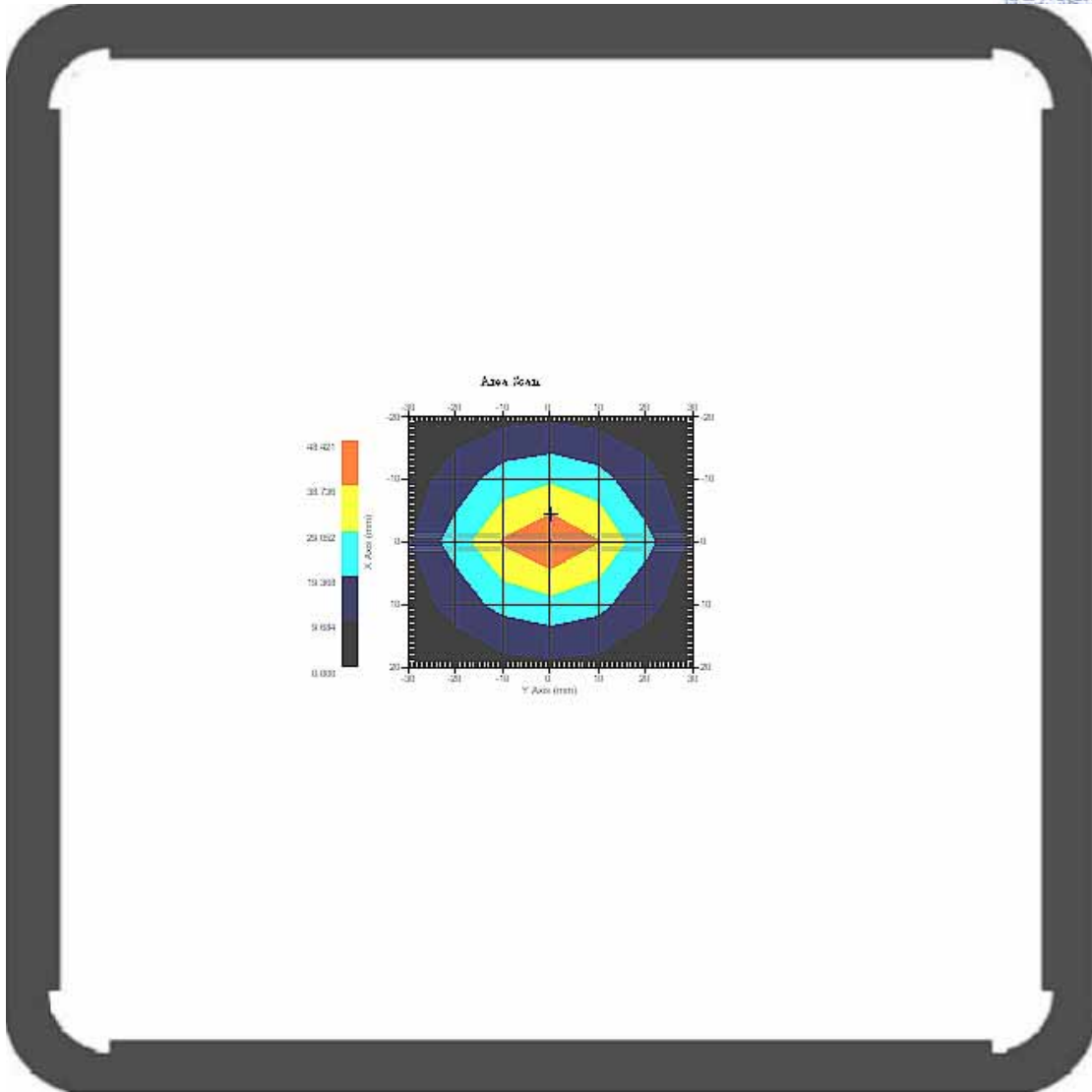
### Probe Data

Name : E-field Probe  
Model : ALS-E-020  
Type : E-Field Triangle  
Serial No. : 266  
Last Calib. Date : 09-Jul-2007  
Frequency : 1900.00 MHz  
Duty Cycle Factor: 1  
Conversion Factor: 5.5  
Probe Sensitivity: 1.20 1.20 1.20  $\mu\text{V}/(\text{V}/\text{m})^2$   
Compression Point: 95.00 mV  
Offset : 1.56 mm

### Measurement Data

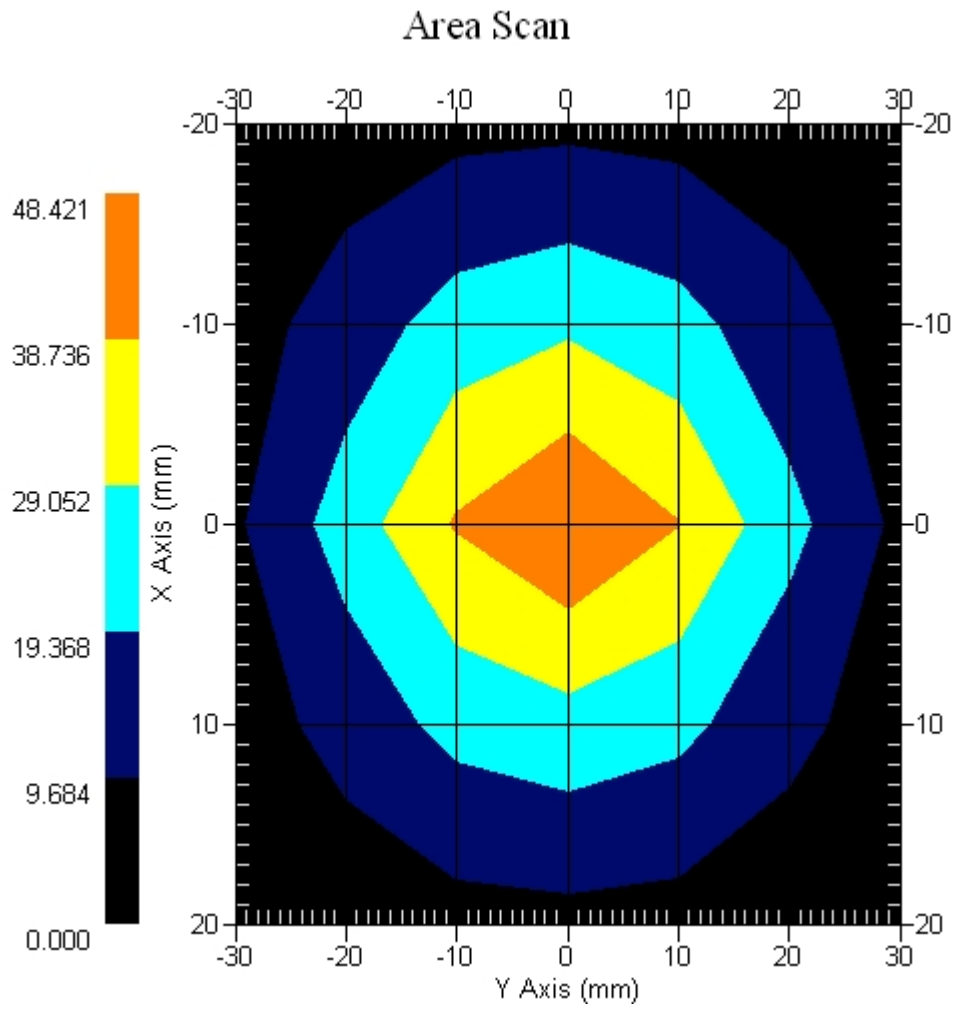
Crest Factor : 1  
Tissue Temp. : 22.00 °C  
Ambient Temp. : 22.10 °C  
Set-up Date : 21-Nov-2007  
Area Scan : 5x7x1 : Measurement x=10mm, y=10mm, z=4mm  
Zoom Scan : 5x5x8 : Measurement x=8mm, y=8mm, z=4mm

Channel : Mid



1 gram SAR value : 40.864 W/kg  
10 gram SAR value : 20.197 W/kg  
Area Scan Peak SAR : 48.421 W/kg  
Zoom Scan Peak SAR : 81.302 W/kg

## Area Scan Plot





SAR-Z Axis  
at Hotspot x:0.00 y:0.00

