

Appendix D

SAR Measurement Data

of

Product Name

Notebook Personal Computer

Model

V100



1 850MHz SAR measurement Data

SAR Test Report

Report Date : 20-Nov-2007
Measurement Date : 20-Nov-2007

Product Data

Device Name : v100
Type : Other
Frequency : 835.00 MHz
Max. Transmit Pwr : 2 W
Drift Time : 0 min(s)
Length : 290 mm
Width : 20 mm
Depth : 5 mm
Antenna Type : Internal

Phantom Data

Name : APREL-Uni
Type : Uni-Phantom
Size (mm) : 280 x 280 x 200
Location : Center

Tissue Data

Type : BODY
Serial No. : 835_Body
Frequency : 835.00 MHz
Last Calib. Date : 20-Nov-2007
Temperature : 22.20 °C
Ambient Temp. : 22.50 °C
Humidity : 50.00 RH%
Epsilon : 54.23 F/m
Sigma : 0.98 S/m
Density : 1000.00 kg/cu. m

Probe Data

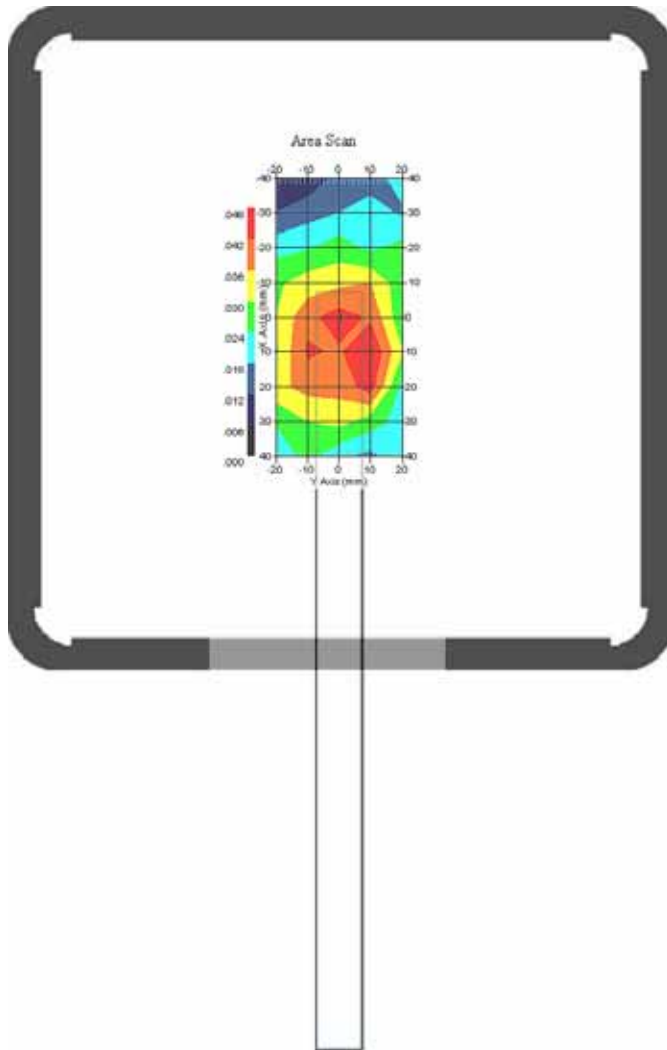
Name : E-field Probe
Model : ALS-E-020
Type : E-Field Triangle
Serial No. : 266
Last Calib. Date : 09-Jul-2007
Frequency : 835.00 MHz
Duty Cycle Factor: 4
Conversion Factor: 6.8
Probe Sensitivity: 1.20 1.20 1.20 $\mu\text{V}/(\text{V}/\text{m})^2$
Compression Point: 95.00 mV
Offset : 1.56 mm

1.1 GPRS 835 MHz, EUT Position: Mode2

Measurement Data

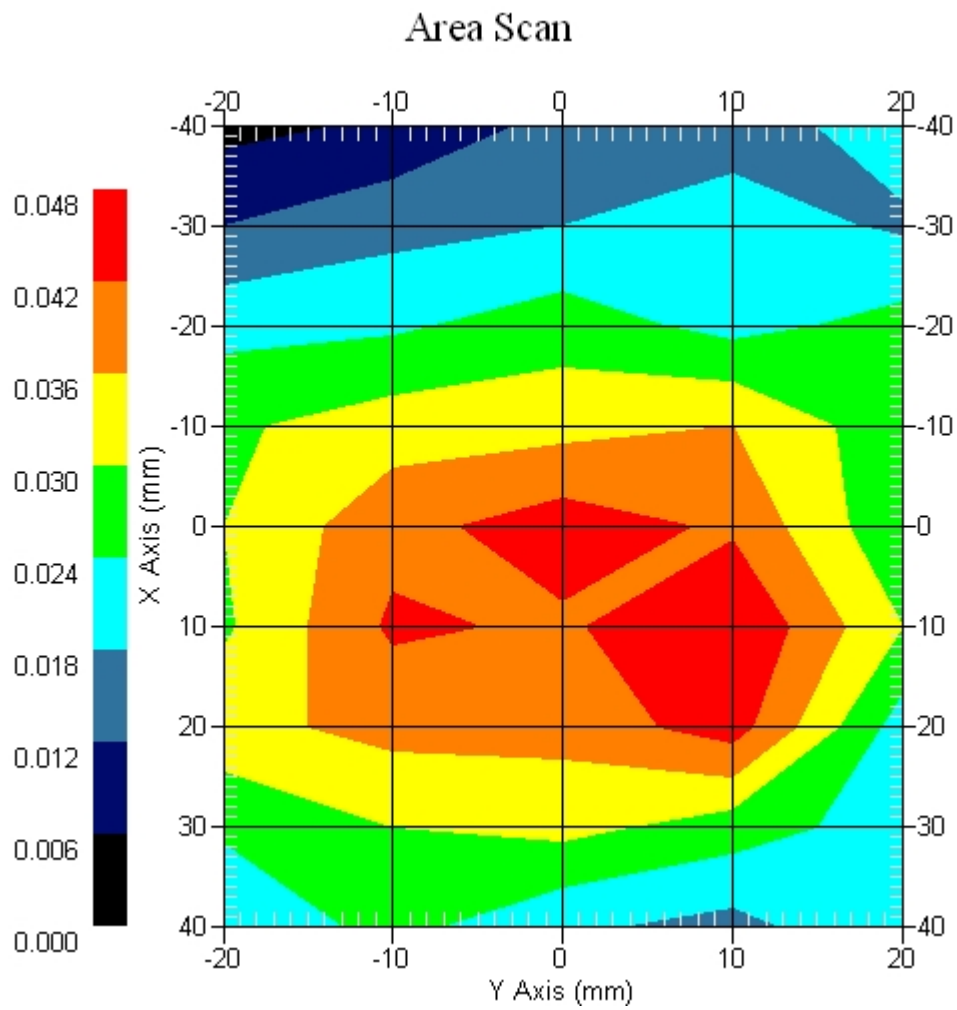
Crest Factor : 4
Set-up Date : 20-Nov-2007
Area Scan : 9x5x1 : Measurement x=10mm, y=10mm, z=4mm
Zoom Scan : 5x5x8 : Measurement x=8mm, y=8mm, z=4mm
DUT Position : Touch
Channel : Low

Power Drift-Start : 0.057 W/kg
Power Drift-Finish: 0.056 W/kg
Power Drift (%) : -1.754



1 gram SAR value : 0.061 W/kg
10 gram SAR value : 0.034 W/kg
Area Scan Peak SAR : 0.048 W/kg
Zoom Scan Peak SAR : 0.140 W/kg

Area Scan Plot

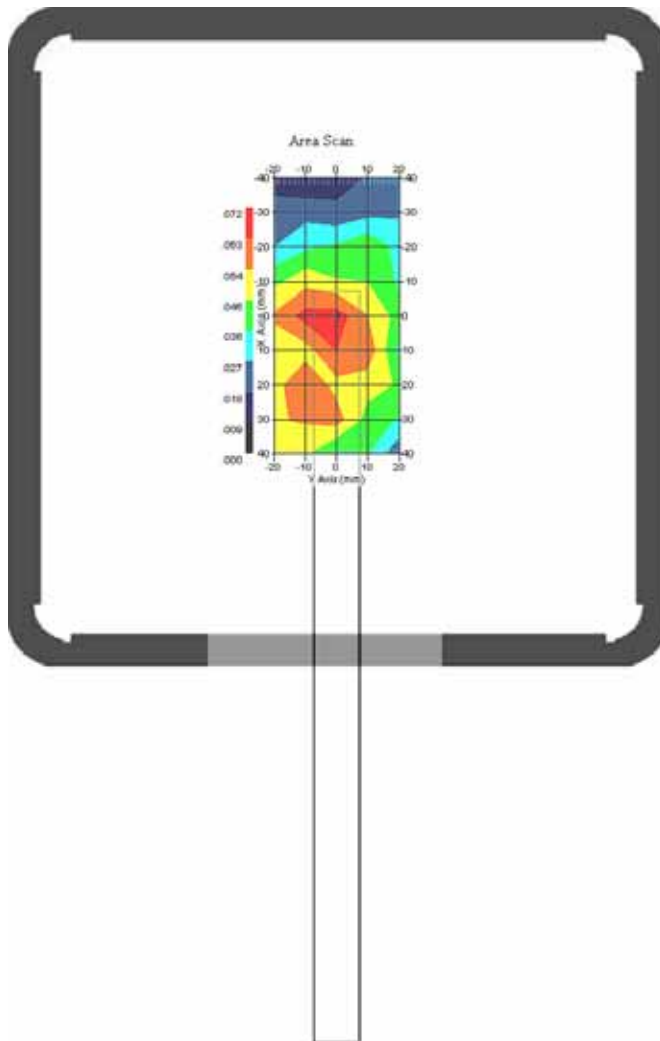


1.2 GPRS835 MHz, EUT Position: Mode2

Measurement Data

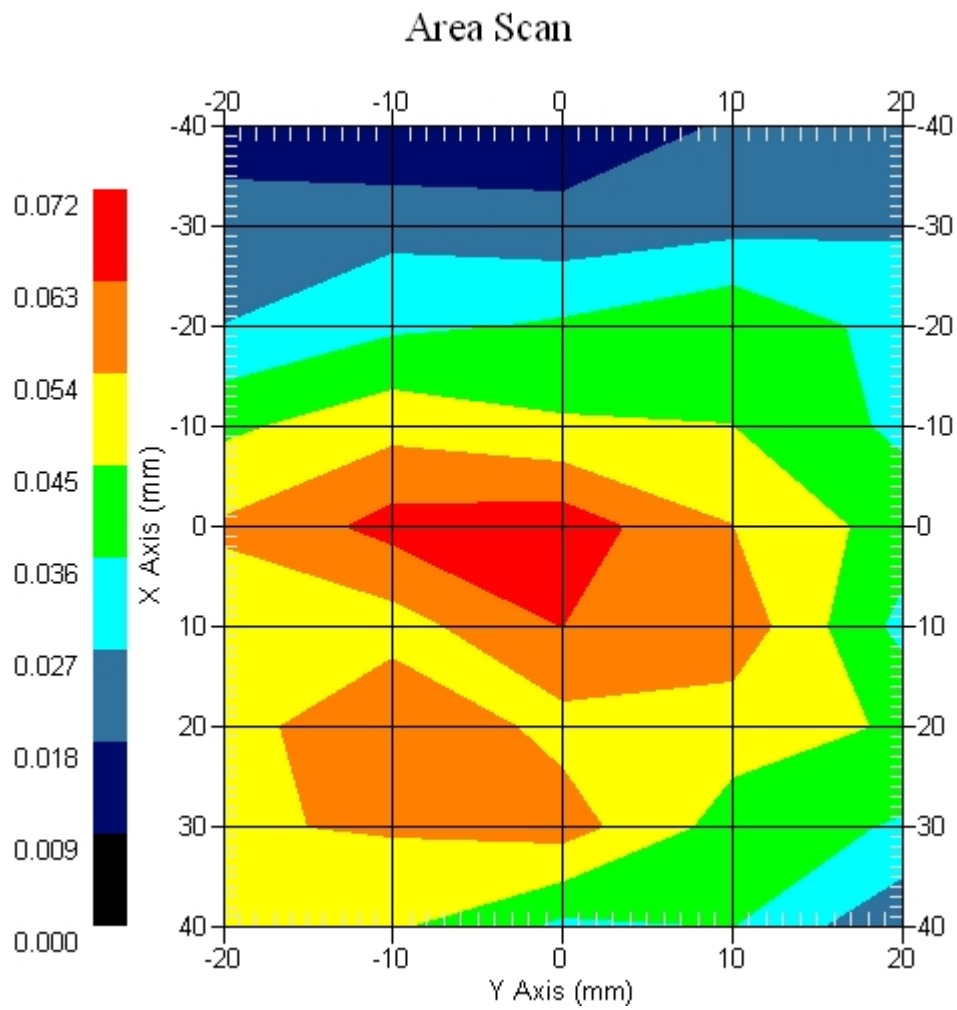
Crest Factor : 4
Set-up Date : 20-Nov-2007
Area Scan : 9x5x1 : Measurement x=10mm, y=10mm, z=4mm
Zoom Scan : 5x5x8 : Measurement x=8mm, y=8mm, z=4mm
DUT Position : Touch
Channel : Mid

Power Drift-Start : 0.076 W/kg
Power Drift-Finish: 0.079 W/kg
Power Drift (%) : 4.433



1 gram SAR value : 0.074 W/kg
10 gram SAR value : 0.046 W/kg
Area Scan Peak SAR : 0.068 W/kg
Zoom Scan Peak SAR : 0.150 W/kg

Area Scan Plot

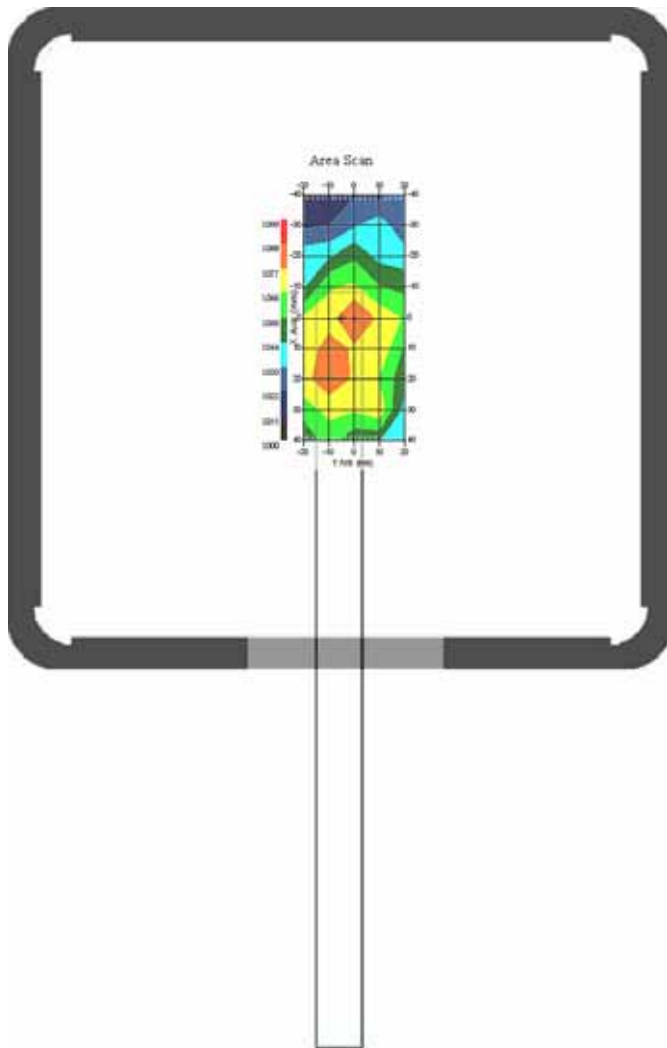


1.3 GPRS835 MHz, EUT Position: Mode2

Measurement Data

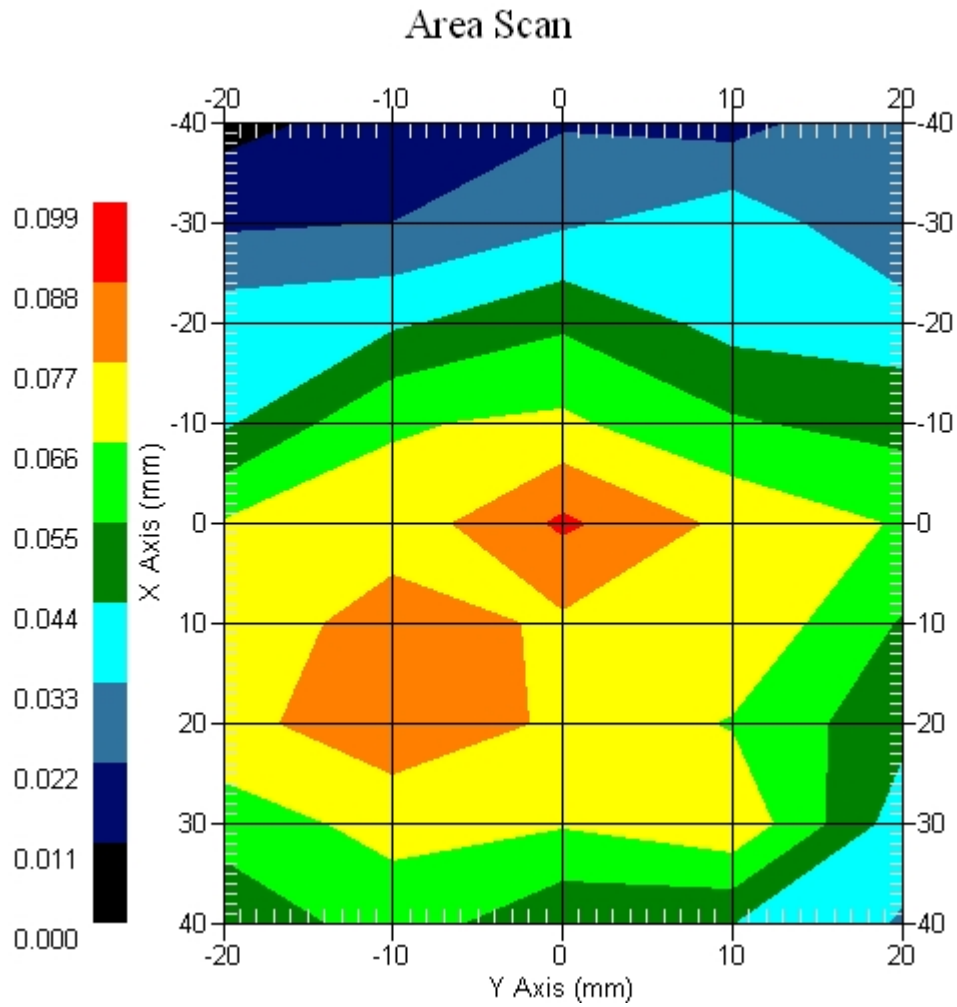
Crest Factor : 4
Set-up Date : 20-Nov-2007
Area Scan : 9x5x1 : Measurement x=10mm, y=10mm, z=4mm
Zoom Scan : 5x5x8 : Measurement x=8mm, y=8mm, z=4mm
DUT Position : Touch
Channel : High

Power Drift-Start : 0.092 W/kg
Power Drift-Finish: 0.096 W/kg
Power Drift (%) : 4.343



1 gram SAR value : 0.089 W/kg
10 gram SAR value : 0.051 W/kg
Area Scan Peak SAR : 0.090 W/kg
Zoom Scan Peak SAR : 0.180 W/kg

Area Scan Plot

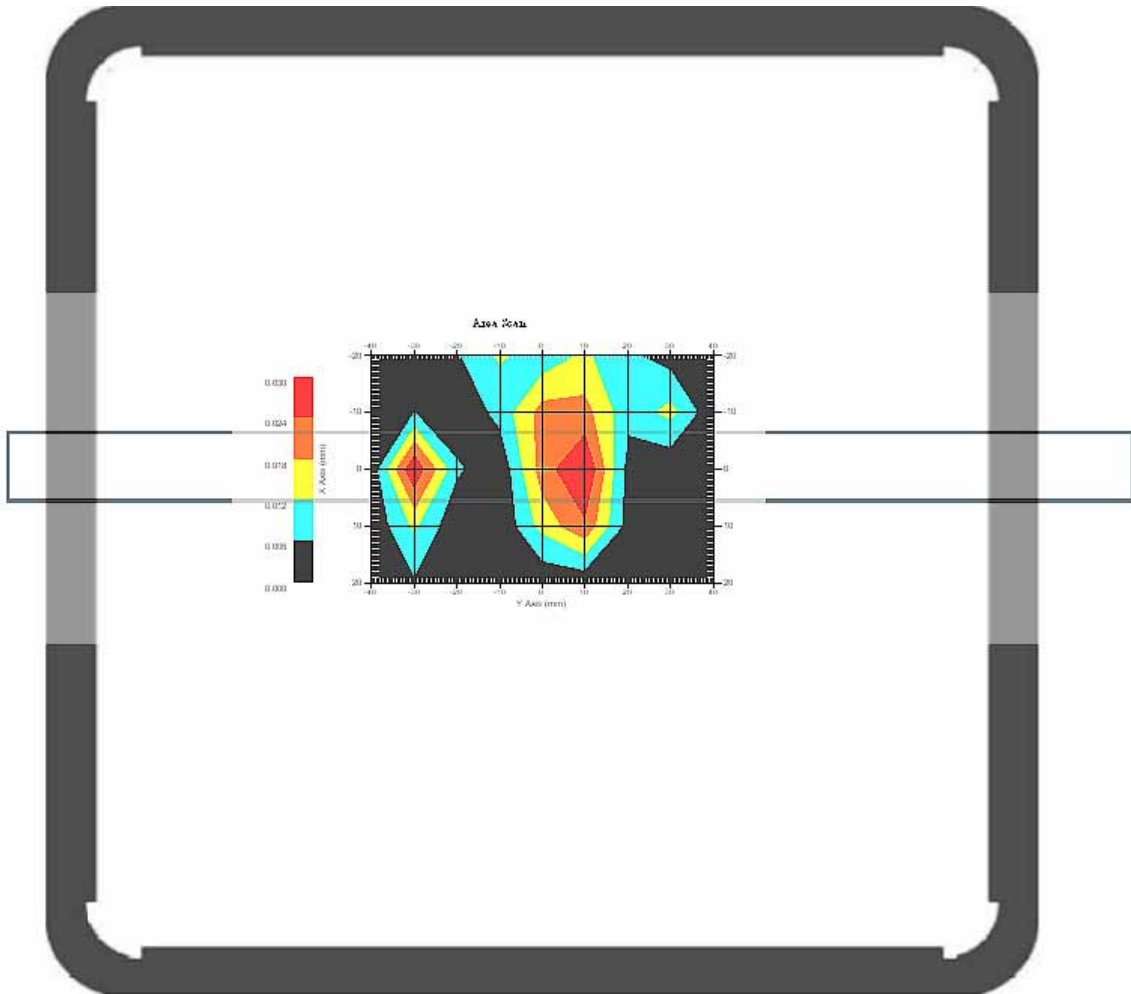


1.4 GPRS835 MHz, EUT Position: Mode3

Measurement Data

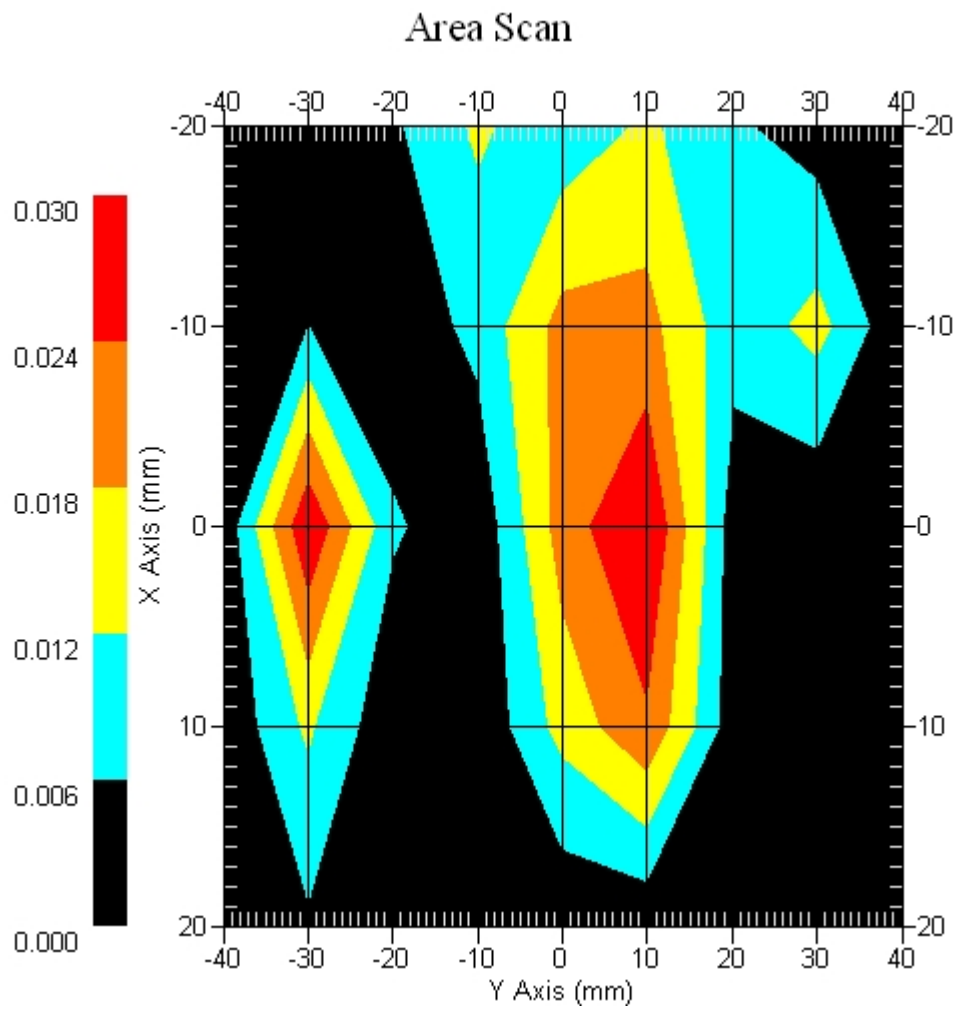
Crest Factor : 4
Set-up Date : 20-Nov-2007
Area Scan : 5x9x1 : Measurement x=10mm, y=10mm, z=4mm
Zoom Scan : 5x5x8 : Measurement x=8mm, y=8mm, z=4mm
DUT Position : Touch
Channel : Mid

Power Drift-Start : 0.017 W/kg
Power Drift-Finish: 0.017 W/kg
Power Drift (%) : -0.051



1 gram SAR value : 0.029 W/kg
10 gram SAR value : 0.014 W/kg
Area Scan Peak SAR : 0.030 W/kg
Zoom Scan Peak SAR : 0.070 W/kg

Area Scan Plot

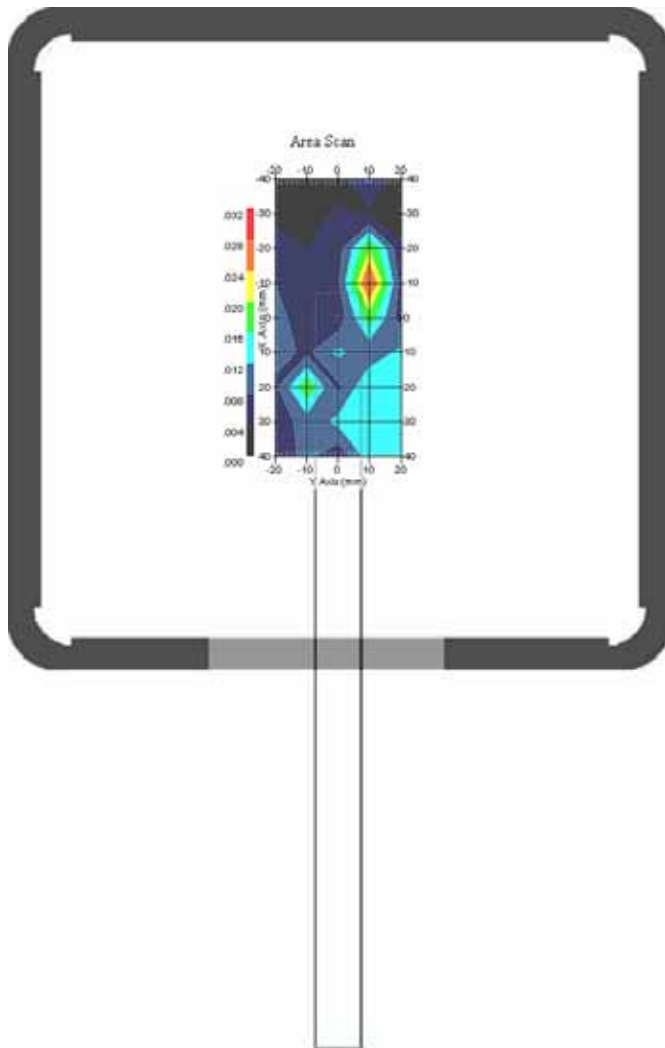


1.5 GPRS835 MHz, EUT Position: Model1

Measurement Data

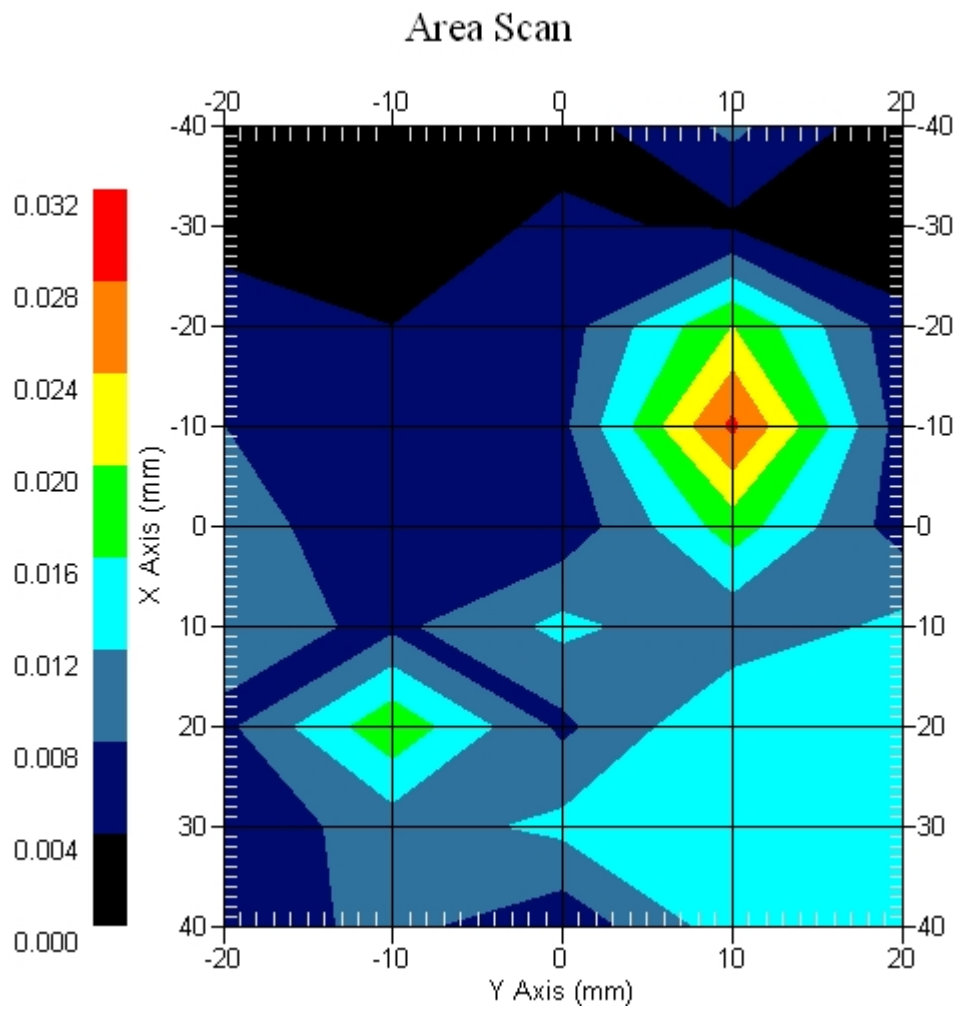
Crest Factor : 4
Set-up Date : 20-Nov-2007
Area Scan : 9x5x1 : Measurement x=10mm, y=10mm, z=4mm
Zoom Scan : 5x5x8 : Measurement x=8mm, y=8mm, z=4mm
DUT Position : Touch
Channel : Mid

Power Drift-Start : 0.012 W/kg
Power Drift-Finish: 0.012 W/kg
Power Drift (%) : 3.526



1 gram SAR value : 0.014 W/kg
10 gram SAR value : 0.007 W/kg
Area Scan Peak SAR : 0.029 W/kg
Zoom Scan Peak SAR : 0.050 W/kg

Area Scan Plot

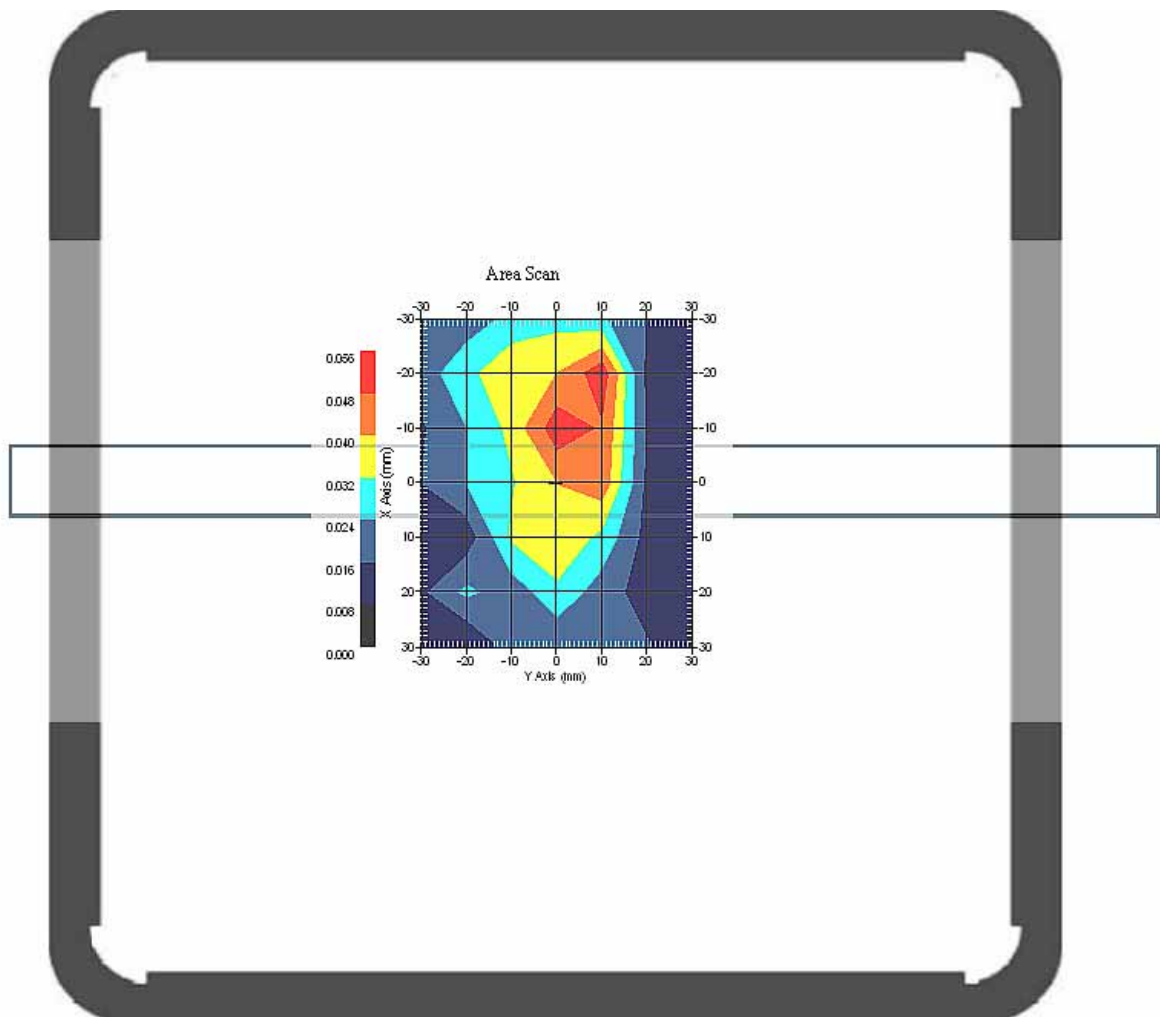


1.6 GPRS835 MHz, EUT Position: Mode5

Measurement Data

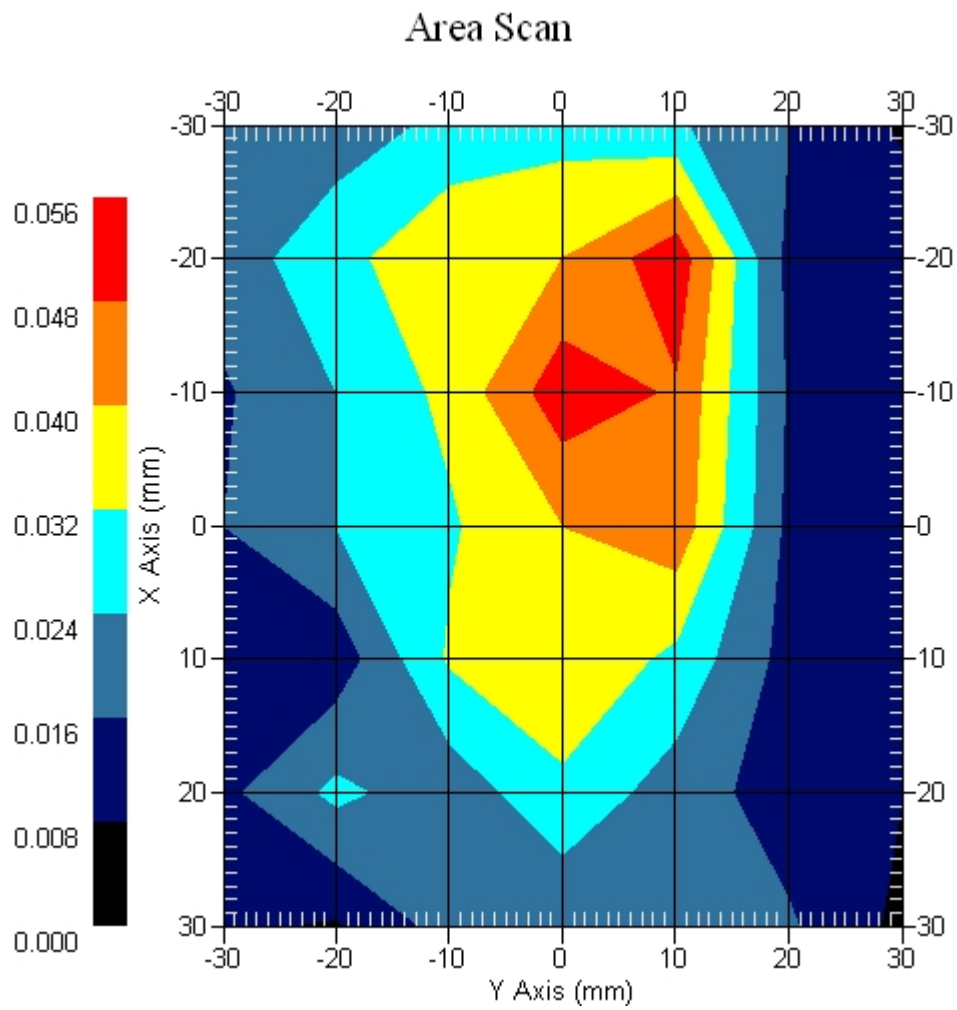
Crest Factor : 4
Set-up Date : 20-Nov-2007
Area Scan : 7x7x1 : Measurement x=10mm, y=10mm, z=4mm
Zoom Scan : 5x5x8 : Measurement x=8mm, y=8mm, z=4mm
DUT Position : Touch
Channel : Mid

Power Drift-Start : 0.032 W/kg
Power Drift-Finish: 0.031 W/kg
Power Drift (%) : -3.125



1 gram SAR value : 0.054 W/kg
10 gram SAR value : 0.042 W/kg
Area Scan Peak SAR : 0.053 W/kg
Zoom Scan Peak SAR : 0.100 W/kg

Area Scan Plot

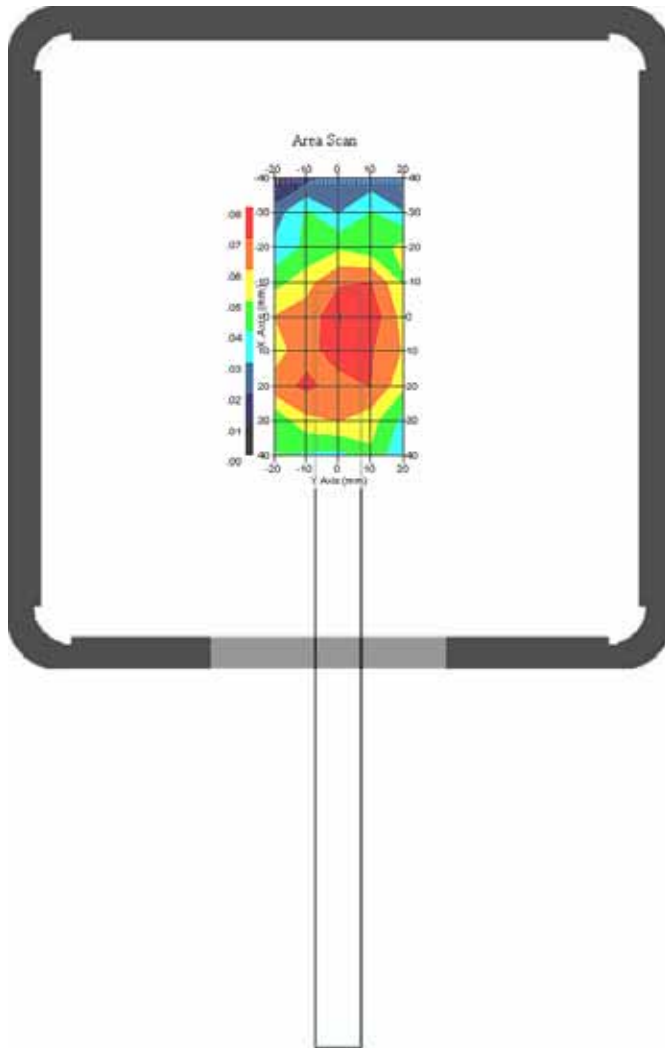


1.7 EDGE 835 MHz, EUT Position: Mode2

Measurement Data

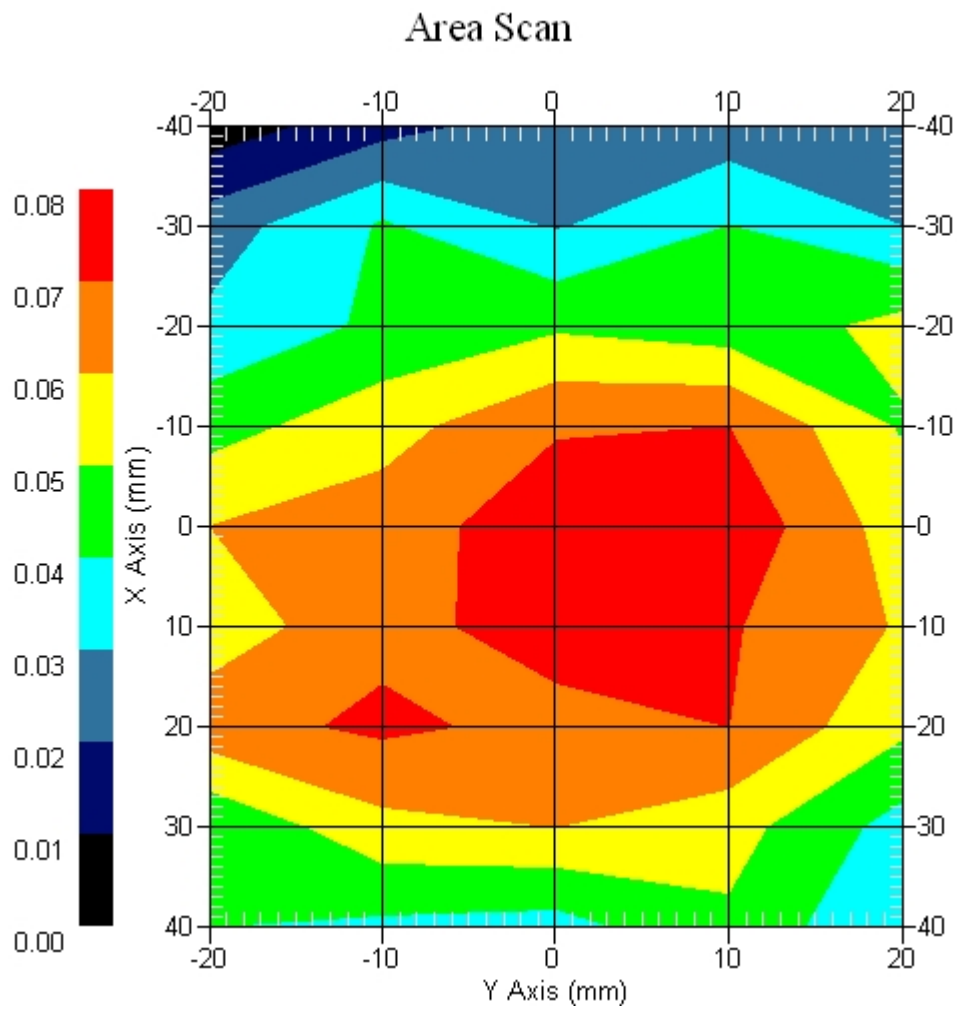
Crest Factor : 4
Set-up Date : 20-Nov-2007
Area Scan : 7x7x1 : Measurement x=10mm, y=10mm, z=4mm
Zoom Scan : 5x5x8 : Measurement x=8mm, y=8mm, z=4mm
DUT Position : Touch
Channel : High

Power Drift-Start : 0.068 W/kg
Power Drift-Finish: 0.066 W/kg
Power Drift (%) : -2.125



1 gram SAR value : 0.075 W/kg
10 gram SAR value : 0.071 W/kg
Area Scan Peak SAR : 0.078 W/kg
Zoom Scan Peak SAR : 0.140 W/kg

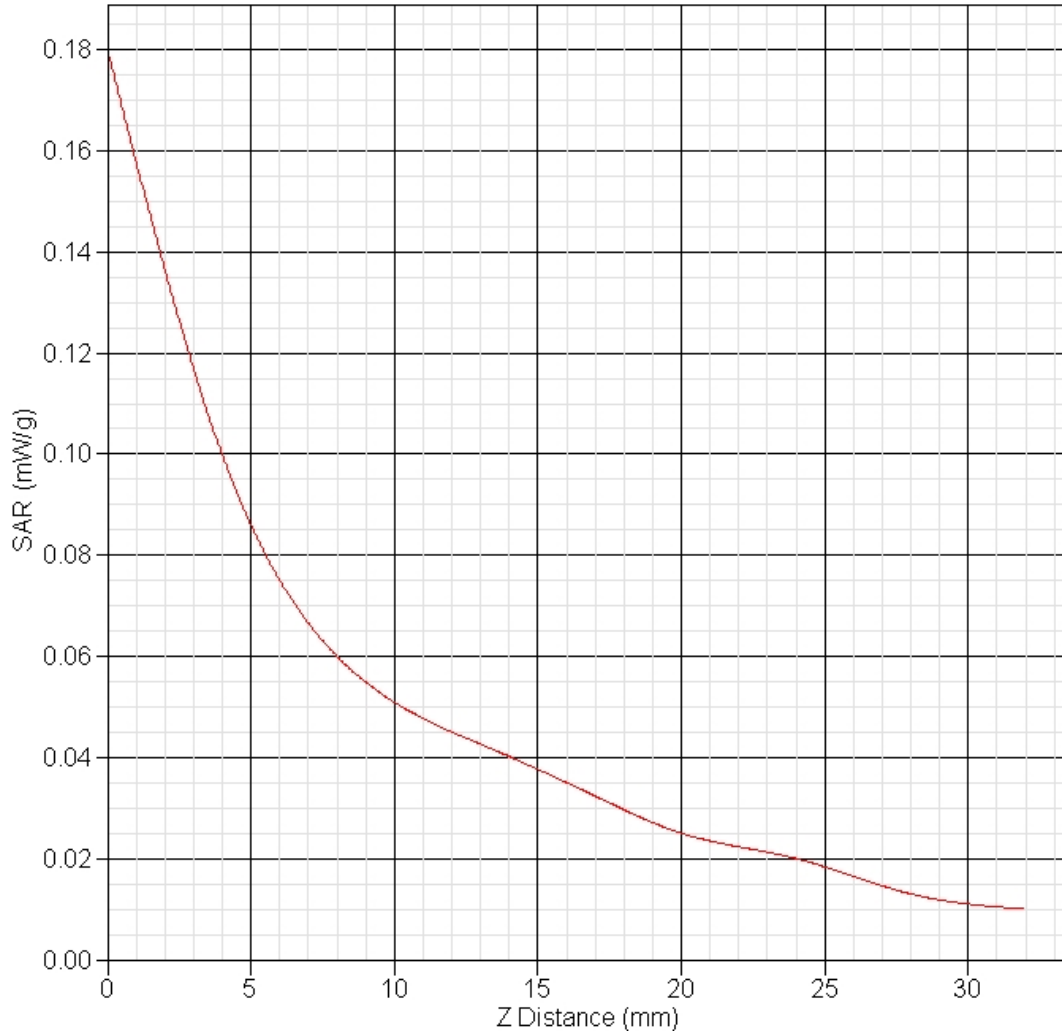
Area Scan Plot



1.8 850 MHz Z-Axis plot

Frequency: GPRS 850 MHz, EUT Mode2

SAR-Z Axis
at Hotspot x:0.00 y:0.00





2 1900MHz SAR measurement Data

SAR Test Report

Report Date : 21-Nov-2007
Measurement Date : 21-Nov-2007

Product Data

Device Name : v100
Serial No. : Mode2
Type : Other
Frequency : 1900.00 MHz
Max. Transmit Pwr : 1 W
Drift Time : 0 min(s)
Length : 290 mm
Width : 20 mm
Depth : 5 mm
Antenna Type : Internal

Phantom Data

Name : APREL-Uni
Type : Uni-Phantom
Size (mm) : 280 x 280 x 200
Location : Center

Tissue Data

Type : BODY
Serial No. : 1900_Body
Frequency : 1900.00 MHz
Last Calib. Date : 21-Nov-2007
Temperature : 22.00 °C
Ambient Temp. : 22.10 °C
Humidity : 51.00 RH%
Epsilon : 51.21 F/m
Sigma : 1.49 S/m
Density : 1000.00 kg/cu. m

Probe Data

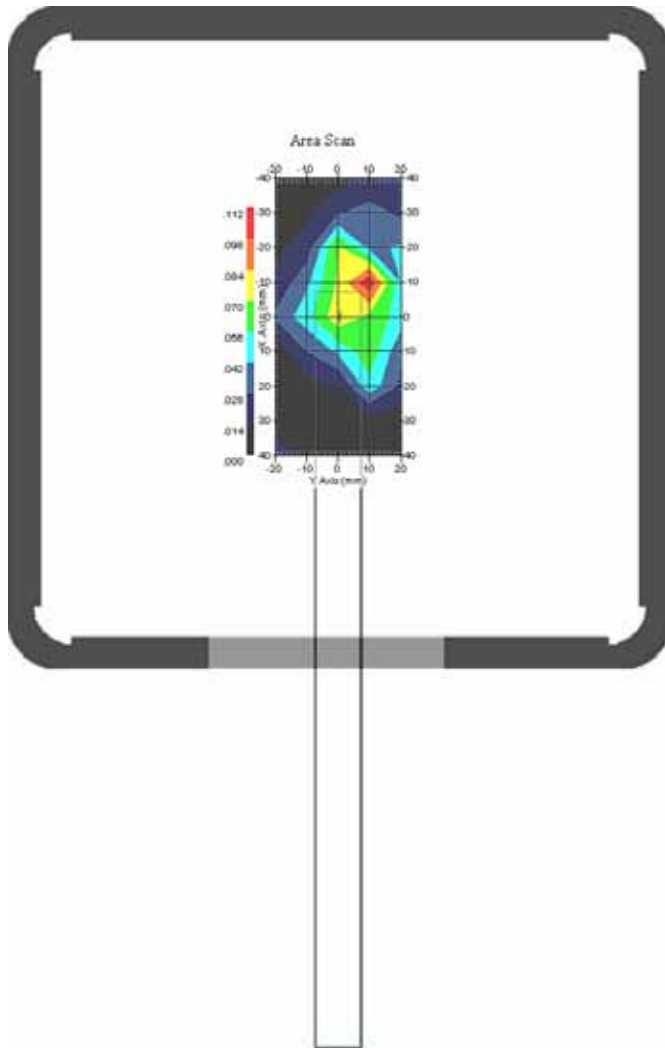
Name : E-field Probe
Model : ALS-E-020
Type : E-Field Triangle
Serial No. : 266
Last Calib. Date : 09-Jul-2007
Frequency : 1900.00 MHz
Duty Cycle Factor: 4
Conversion Factor: 4.9
Probe Sensitivity: 1.20 1.20 1.20 $\mu\text{V}/(\text{V}/\text{m})^2$
Compression Point: 95.00 mV
Offset : 1.56 mm

2.1 GPRS1900 MHz, EUT Position: Mode2

Measurement Data

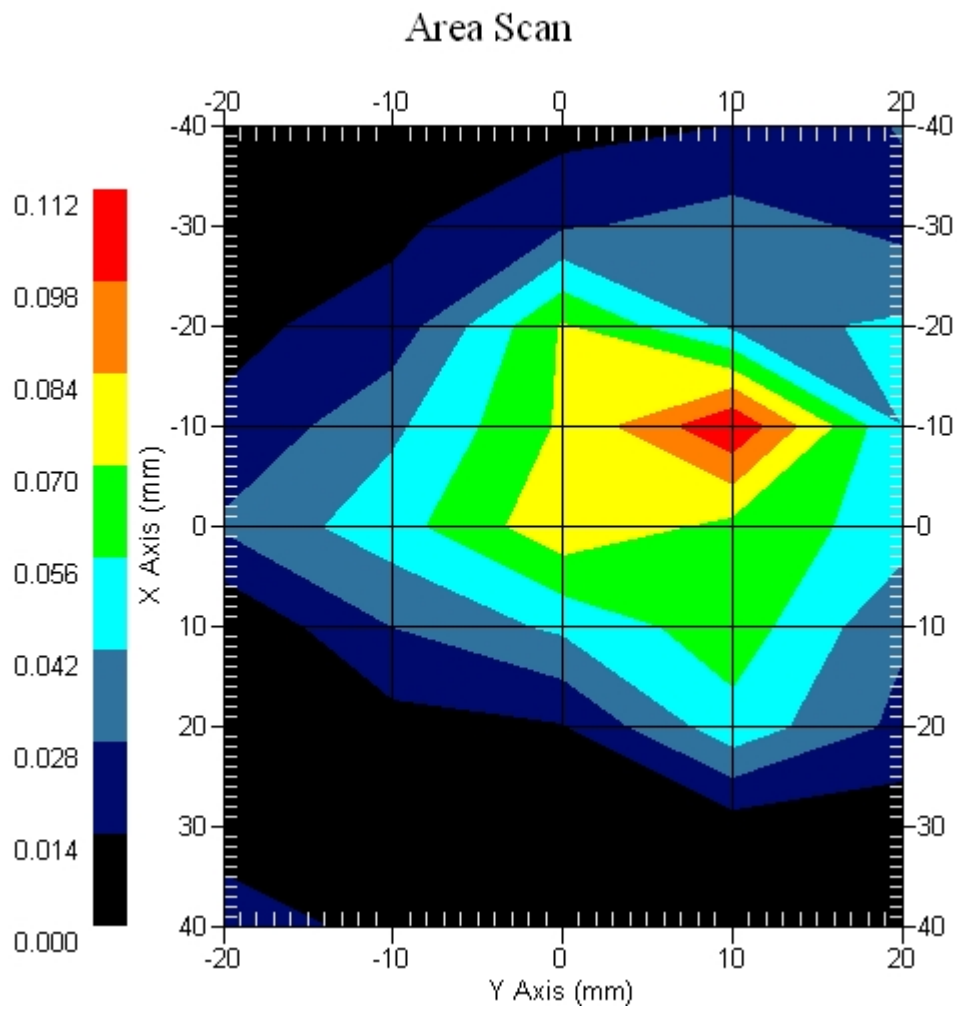
Crest Factor : 4
Set-up Date : 21-Nov-2007
Area Scan : 9x5x1 : Measurement x=10mm, y=10mm, z=4mm
Zoom Scan : 5x5x8 : Measurement x=8mm, y=8mm, z=4mm
DUT Position : Touch
Channel : Low

Power Drift-Start : 0.100 W/kg
Power Drift-Finish: 0.96 W/kg
Power Drift (%) : -4.082



1 gram SAR value : 0.100 W/kg
10 gram SAR value : 0.045 W/kg
Area Scan Peak SAR : 0.110 W/kg
Zoom Scan Peak SAR : 0.230 W/kg

Area Scan Plot

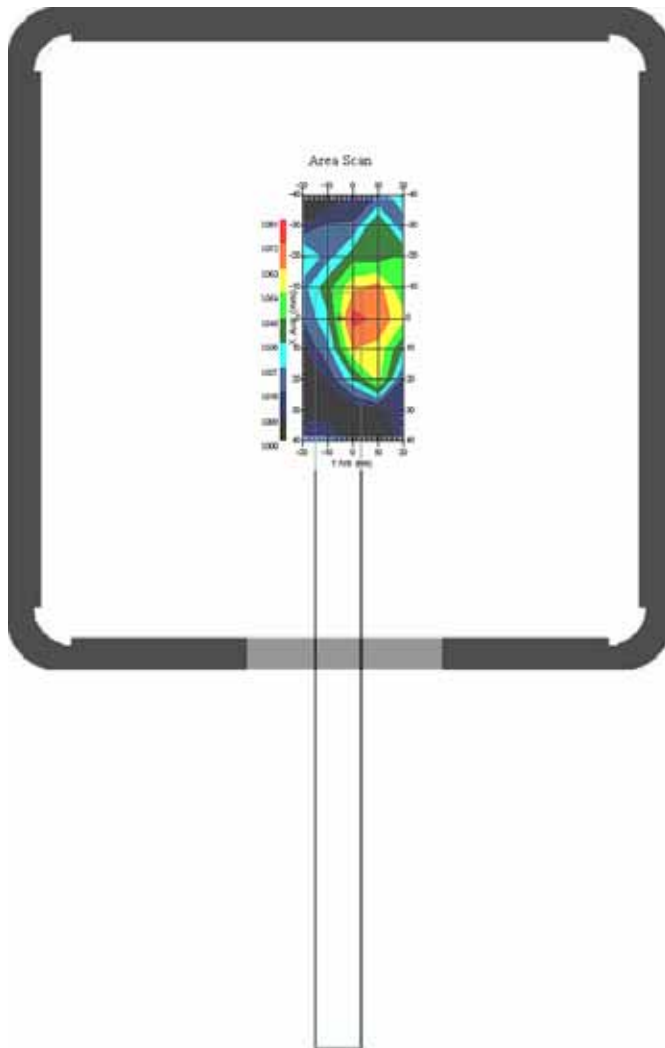


2.2 GPRS1900 MHz, EUT Position: Mode2

Measurement Data

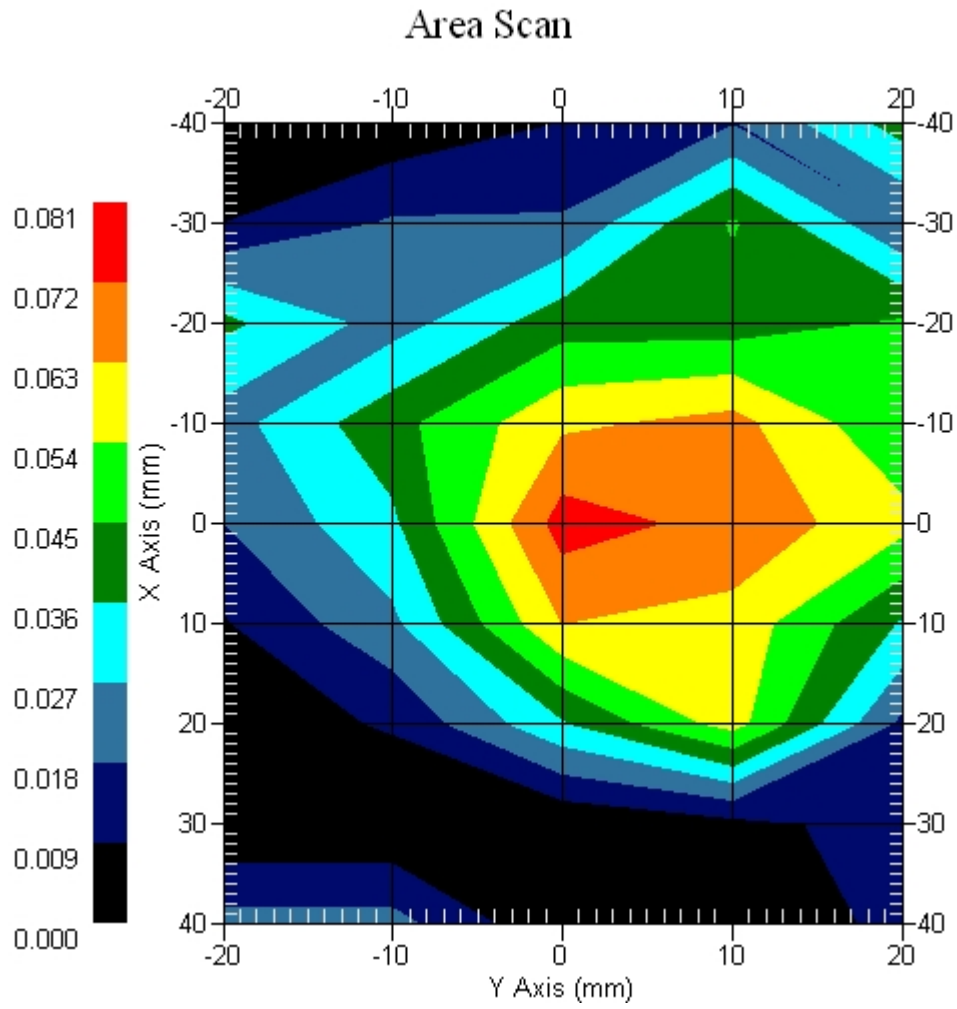
Crest Factor : 4
Set-up Date : 21-Nov-2007
Area Scan : 9x5x1 : Measurement x=10mm, y=10mm, z=4mm
Zoom Scan : 5x5x8 : Measurement x=8mm, y=8mm, z=4mm
DUT Position : Touch
Channel : Mid

Power Drift-Start : 0.099 W/kg
Power Drift-Finish: 0.103 W/kg
Power Drift (%) : 4.507



1 gram SAR value : 0.065 W/kg
10 gram SAR value : 0.035 W/kg
Area Scan Peak SAR : 0.076 W/kg
Zoom Scan Peak SAR : 0.090 W/kg

Area Scan Plot

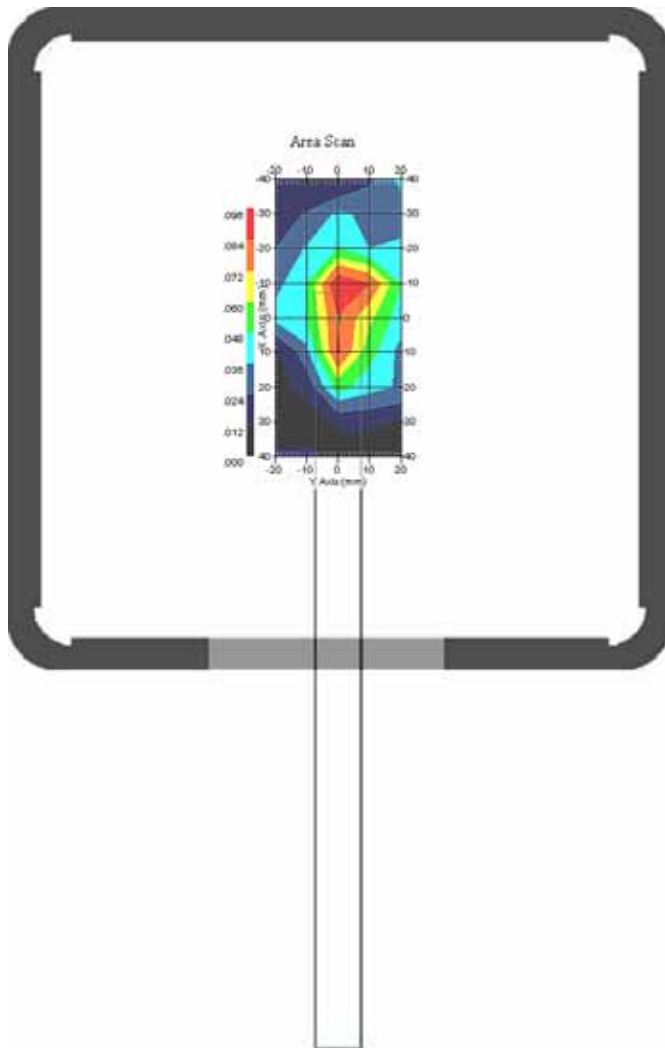


2.3 GPRS1900 MHz, EUT Position: Mode2

Measurement Data

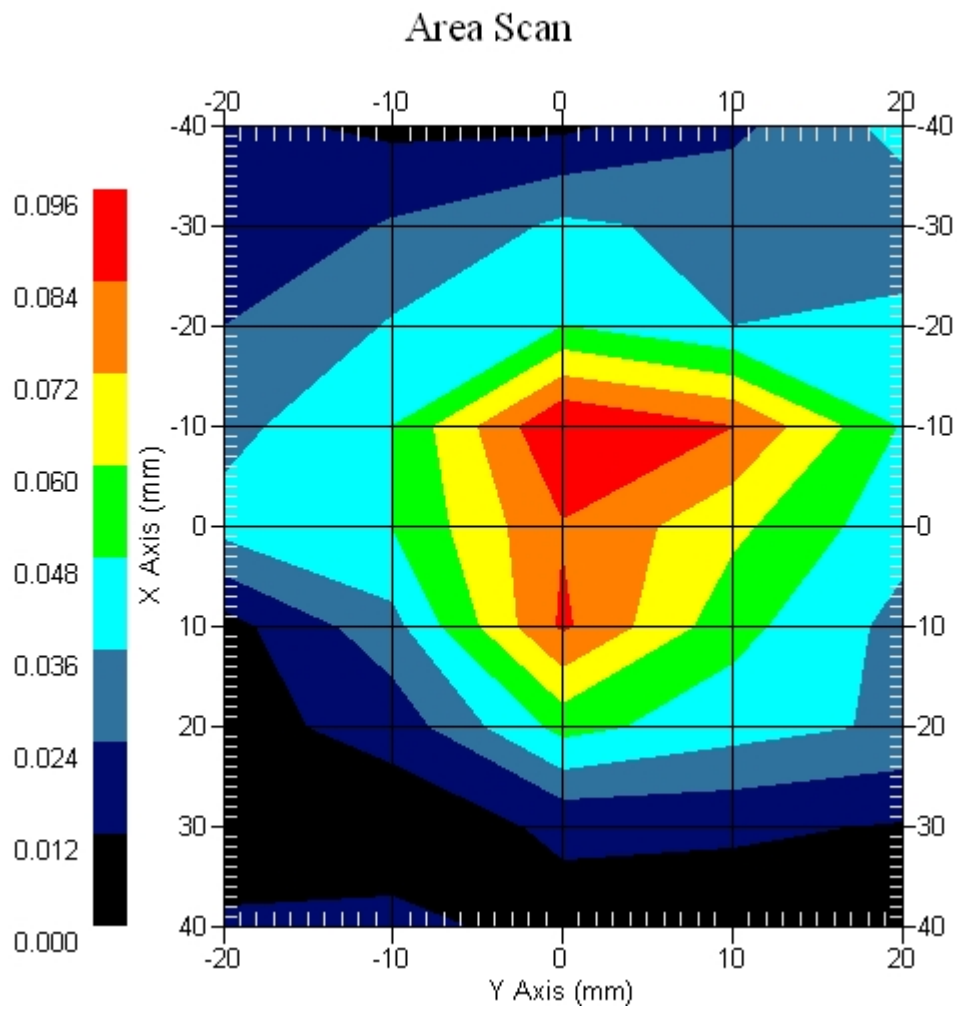
Crest Factor : 4
Set-up Date : 21-Nov-2007
Area Scan : 9x5x1 : Measurement x=10mm, y=10mm, z=4mm
Zoom Scan : 5x5x8 : Measurement x=8mm, y=8mm, z=4mm
DUT Position : Touch
Channel : High

Power Drift-Start : 0.116 W/kg
Power Drift-Finish: 0.112 W/kg
Power Drift (%) : -3.448



1 gram SAR value : 0.059 W/kg
10 gram SAR value : 0.039 W/kg
Area Scan Peak SAR : 0.096 W/kg
Zoom Scan Peak SAR : 0.170 W/kg

Area Scan Plot

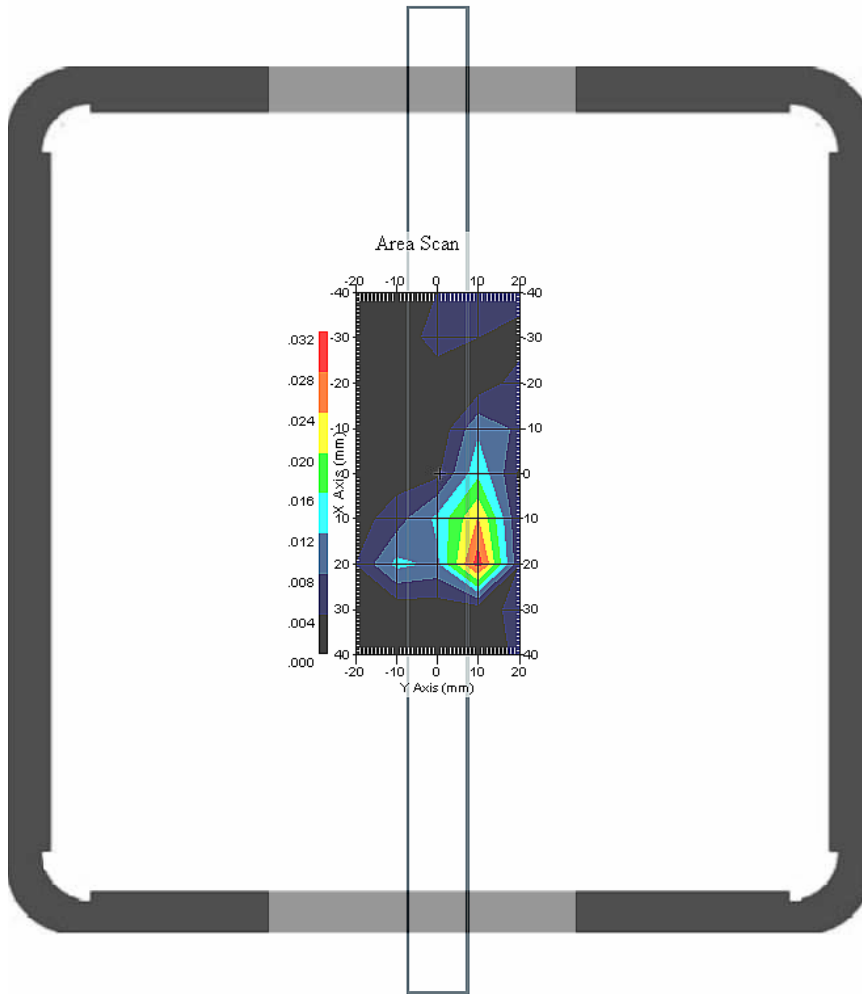


2.4 GPRS1900 MHz, EUT Position: Mode3

Measurement Data

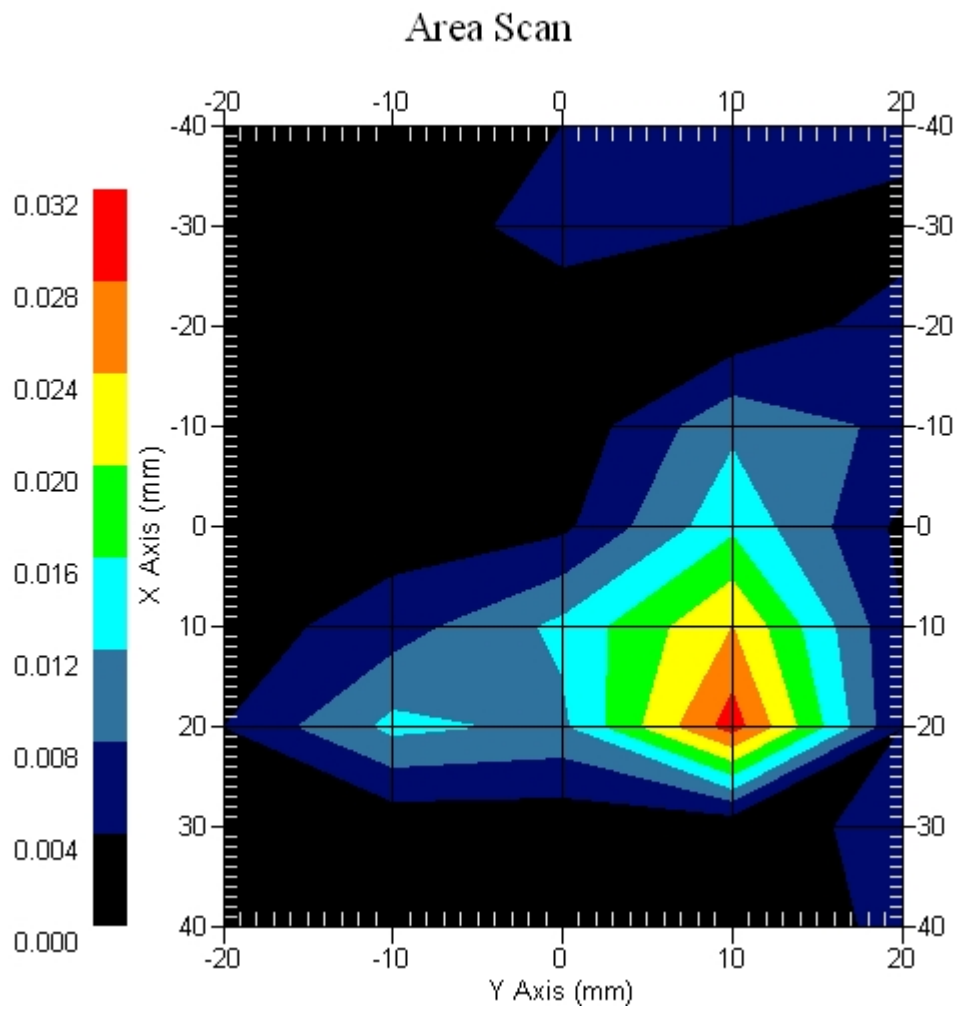
Crest Factor : 4
Set-up Date : 21-Nov-2007
Area Scan : 9x5x1 : Measurement x=10mm, y=10mm, z=4mm
Zoom Scan : 5x5x8 : Measurement x=8mm, y=8mm, z=4mm
DUT Position : Touch
Channel : Mid

Power Drift-Start : 0.016 W/kg
Power Drift-Finish: 0.016 W/kg
Power Drift (%) : 0.042



1 gram SAR value : 0.009 W/kg
10 gram SAR value : 0.026 W/kg
Area Scan Peak SAR : 0.030 W/kg
Zoom Scan Peak SAR : 0.090 W/kg

Area Scan Plot

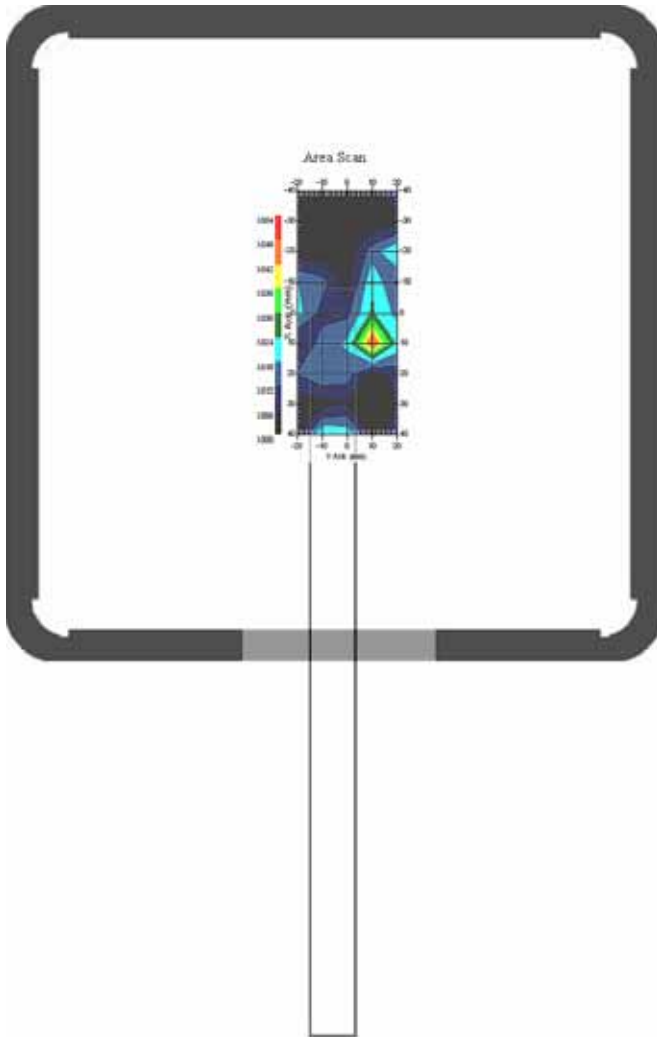


2.5 GPRS1900 MHz, EUT Position: Model

Measurement Data

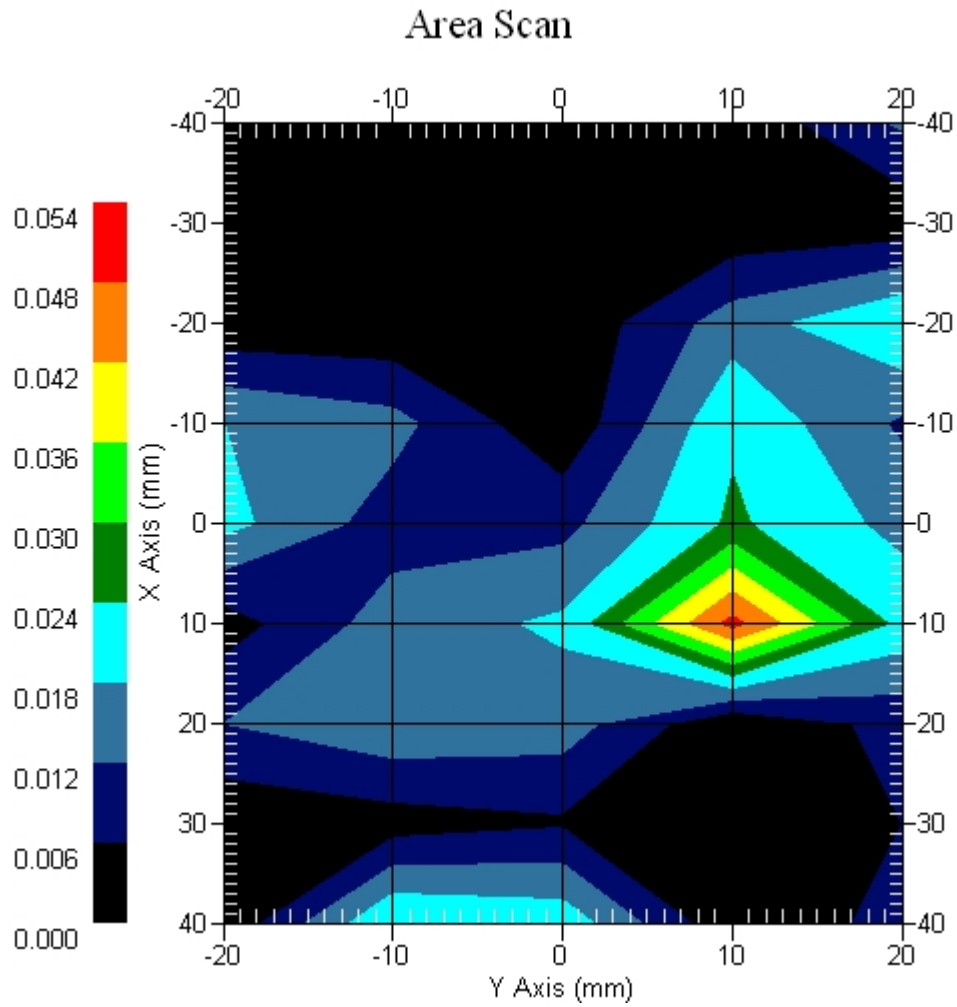
Crest Factor : 4
Set-up Date : 21-Nov-2007
Area Scan : 9x5x1 : Measurement x=10mm, y=10mm, z=4mm
Zoom Scan : 5x5x8 : Measurement x=8mm, y=8mm, z=4mm
DUT Position : Touch
Channel : Mid

Power Drift-Start : 0.053 W/kg
Power Drift-Finish: 0.051 W/kg
Power Drift (%) : -3.724



1 gram SAR value : 0.027 W/kg
10 gram SAR value : 0.014 W/kg
Area Scan Peak SAR : 0.050 W/kg
Zoom Scan Peak SAR : 0.070 W/kg

Area Scan Plot

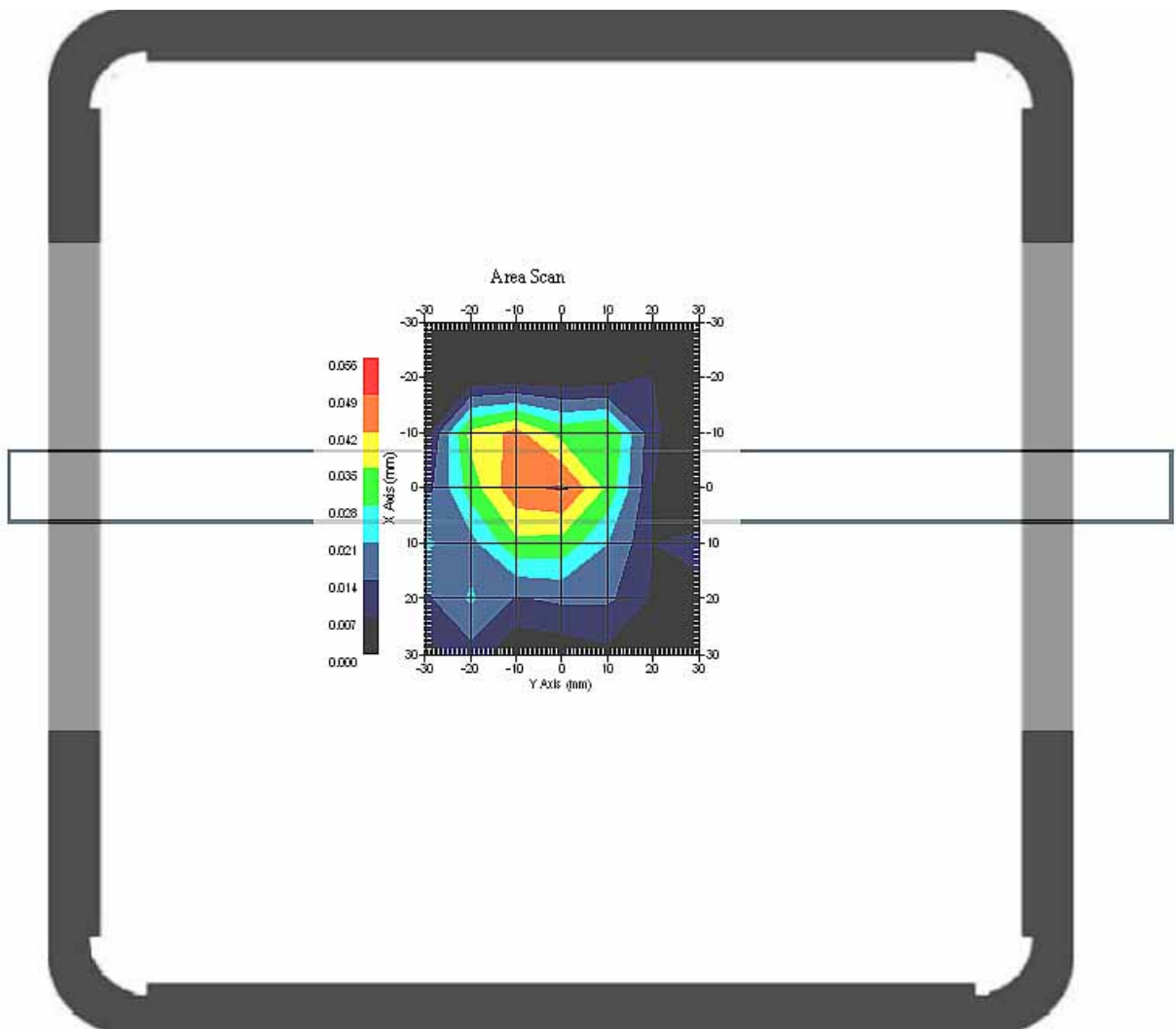


2.6 GPRS1900 MHz, EUT Position: Mode5

Measurement Data

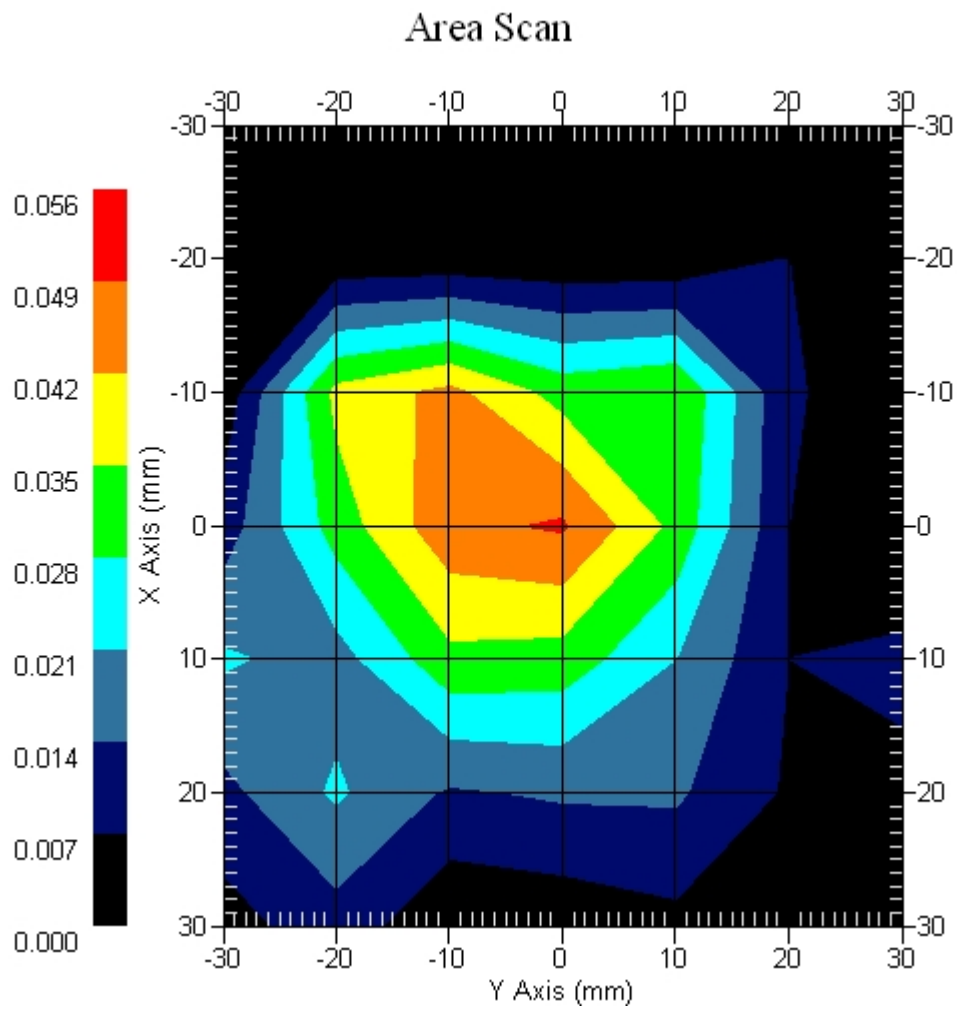
Crest Factor : 4
Set-up Date : 21-Nov-2007
Area Scan : 7x7x1 : Measurement x=10mm, y=10mm, z=4mm
Zoom Scan : 5x5x8 : Measurement x=8mm, y=8mm, z=4mm
DUT Position : Touch
Channel : Mid

Power Drift-Start : 0.009 W/kg
Power Drift-Finish: 0.009 W/kg
Power Drift (%) : 0.010



1 gram SAR value : 0.053 W/kg
10 gram SAR value : 0.023 W/kg
Area Scan Peak SAR : 0.050 W/kg
Zoom Scan Peak SAR : 0.150 W/kg

Area Scan Plot

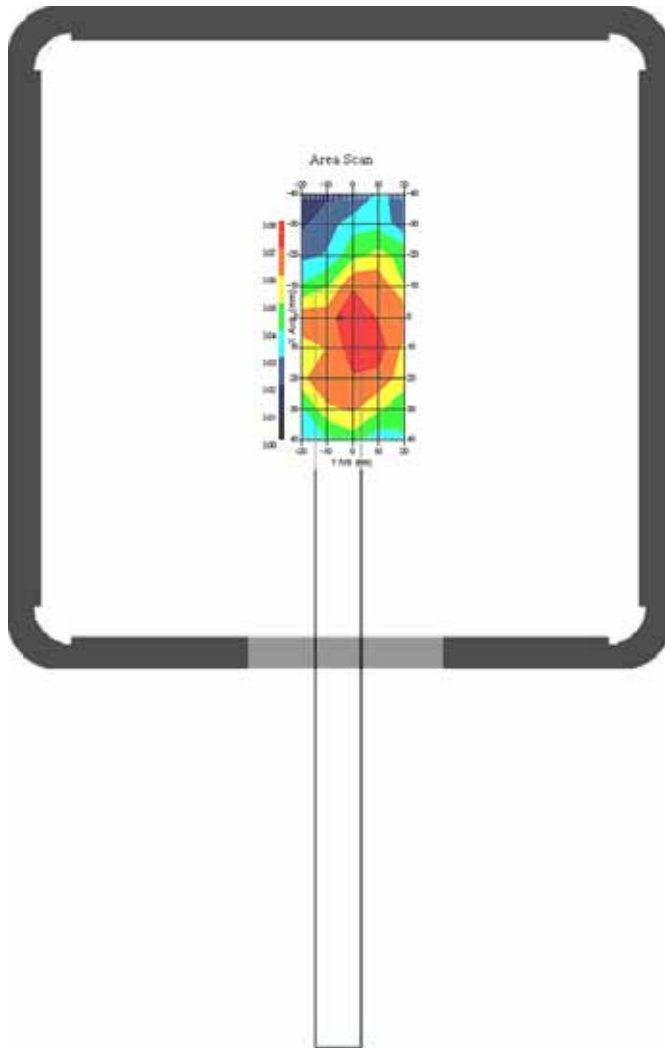


2.7 EDGE1900 MHz, EUT Position: Mode2

Measurement Data

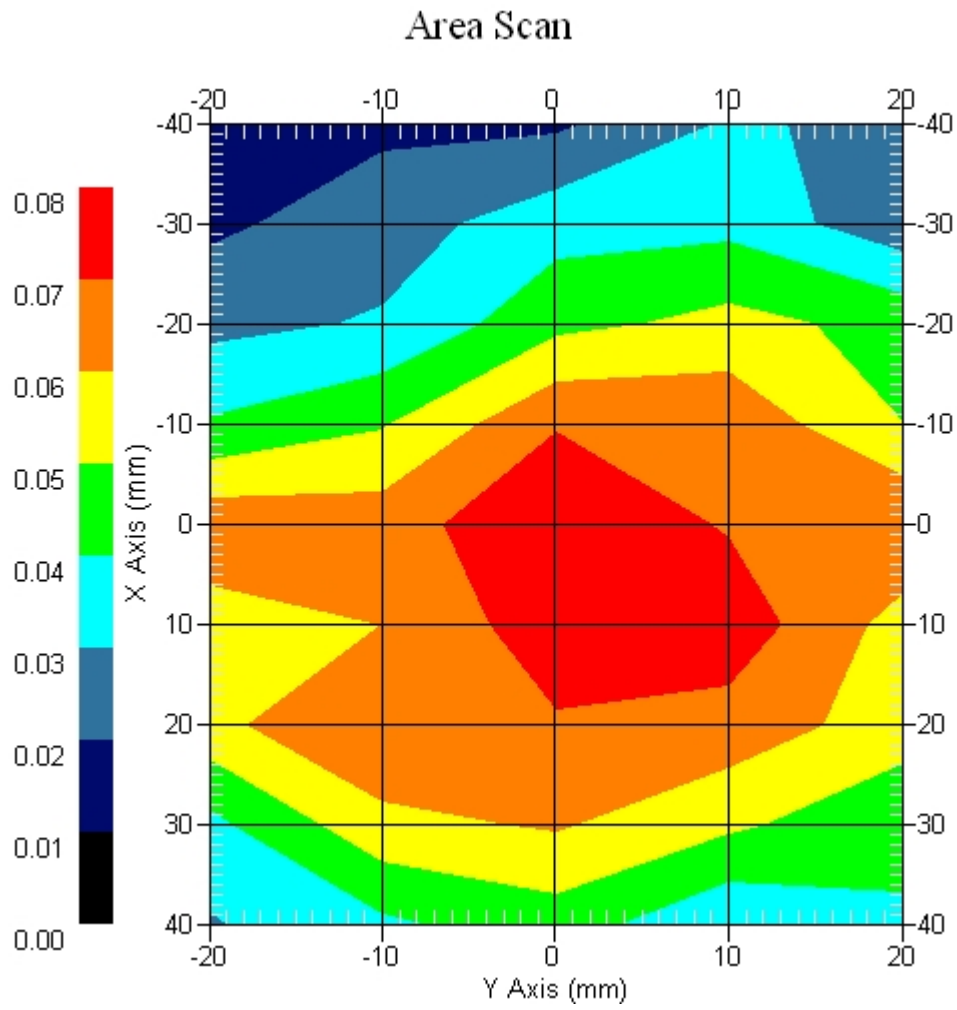
Crest Factor : 4
Set-up Date : 21-Nov-2007
Area Scan : 7x7x1 : Measurement x=10mm, y=10mm, z=4mm
Zoom Scan : 5x5x8 : Measurement x=8mm, y=8mm, z=4mm
DUT Position : Touch
Channel : Low

Power Drift-Start : 0.079 W/kg
Power Drift-Finish: 0.077 W/kg
Power Drift (%) : -2.834



1 gram SAR value : 0.063 W/kg
10 gram SAR value : 0.047 W/kg
Area Scan Peak SAR : 0.073 W/kg
Zoom Scan Peak SAR : 0.100 W/kg

Area Scan Plot



2.8 1900 MHz Z-Axis plot

Frequency: GPRS 1900 MHz, EUT Mode2

SAR-Z Axis
at Hotspot x:0.00 y:0.00

