

Appendix C

SAR System Validation Data

of

Product Name

Notebook Personal Computer

(with SIERRA HSDPA Module, Model:MC8775V)

Model

V100

(Brand: GETAC)

1 850 MHz System Validation Data

Report Date : 20-Nov-2007
Measurement Date : 20-Nov-2007

Product Data

Device Name : Dipole-835
Serial No. : Validation
Type : Dipole
Model : Standard
Frequency : 835.00 MHz
Max. Transmit Pwr : 1 W
Drift Time : 0 min(s)
Length : 161 mm
Width : 3.6 mm
Depth : 89.8 mm
Antenna Type : Internal
Power Drift-Start : 9.021 W/kg
Power Drift-Finish : 8.952 W/kg
Power Drift (%) : -0.767

Phantom Data

Name : APREL-Uni
Type : Uni-Phantom
Size (mm) : 280 x 280 x 200
Location : Center

Tissue Data

Type : HEAD
Serial No. : 835HEAD
Frequency : 835.00 MHz
Last Calib. Date : 20-Nov-2007
Temperature : 22.20 °C
Ambient Temp. : 22.50 °C
Humidity : 50.00 RH%
Epsilon : 42.15 F/m
Sigma : 0.91 S/m
Density : 1000.00 kg/cu. m

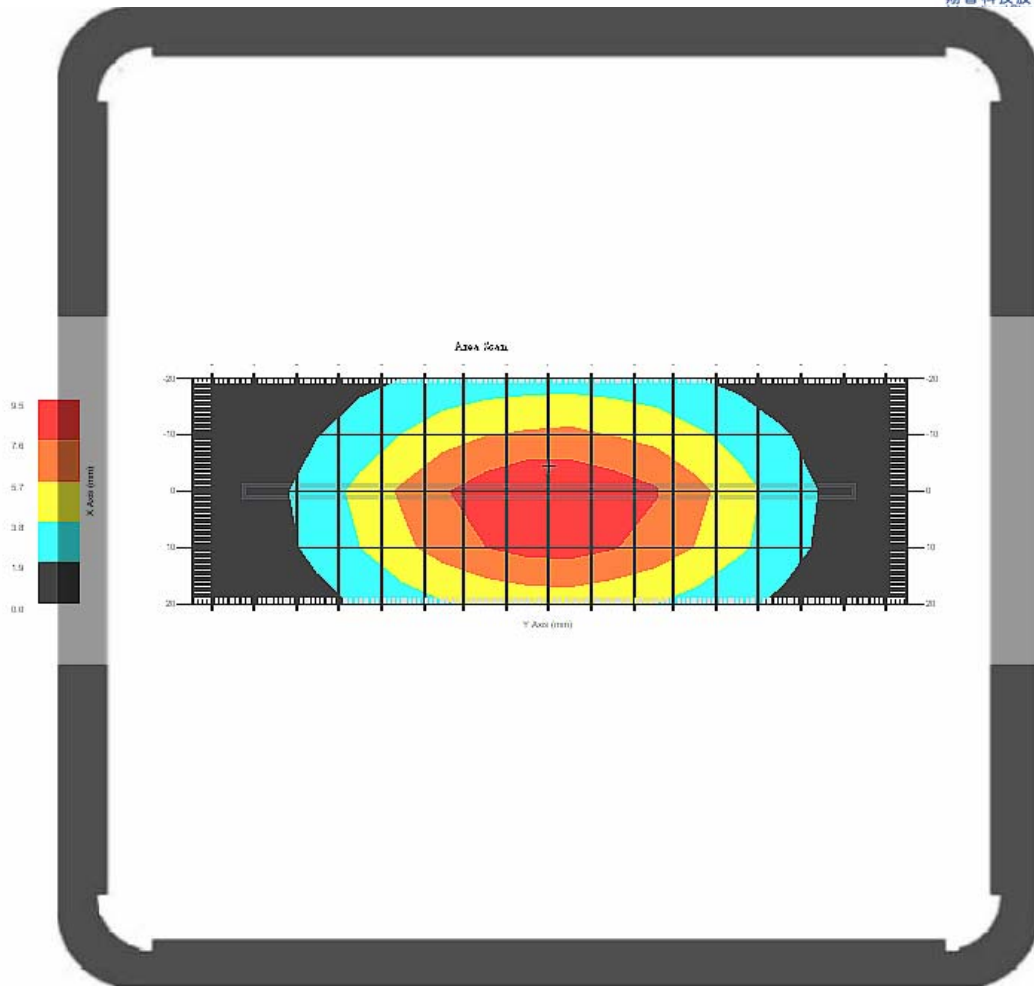
Probe Data

Name : E-field Probe
Model : ALS-E-020
Type : E-Field Triangle
Serial No. : 266
Last Calib. Date : 09-Jul-2007
Frequency : 835.00 MHz
Duty Cycle Factor : 1
Conversion Factor : 6.6
Probe Sensitivity : 1.20 1.20 1.20 $\mu\text{V}/(\text{V}/\text{m})^2$
Compression Point : 95.00 mV
Offset : 1.56 mm

Measurement Data

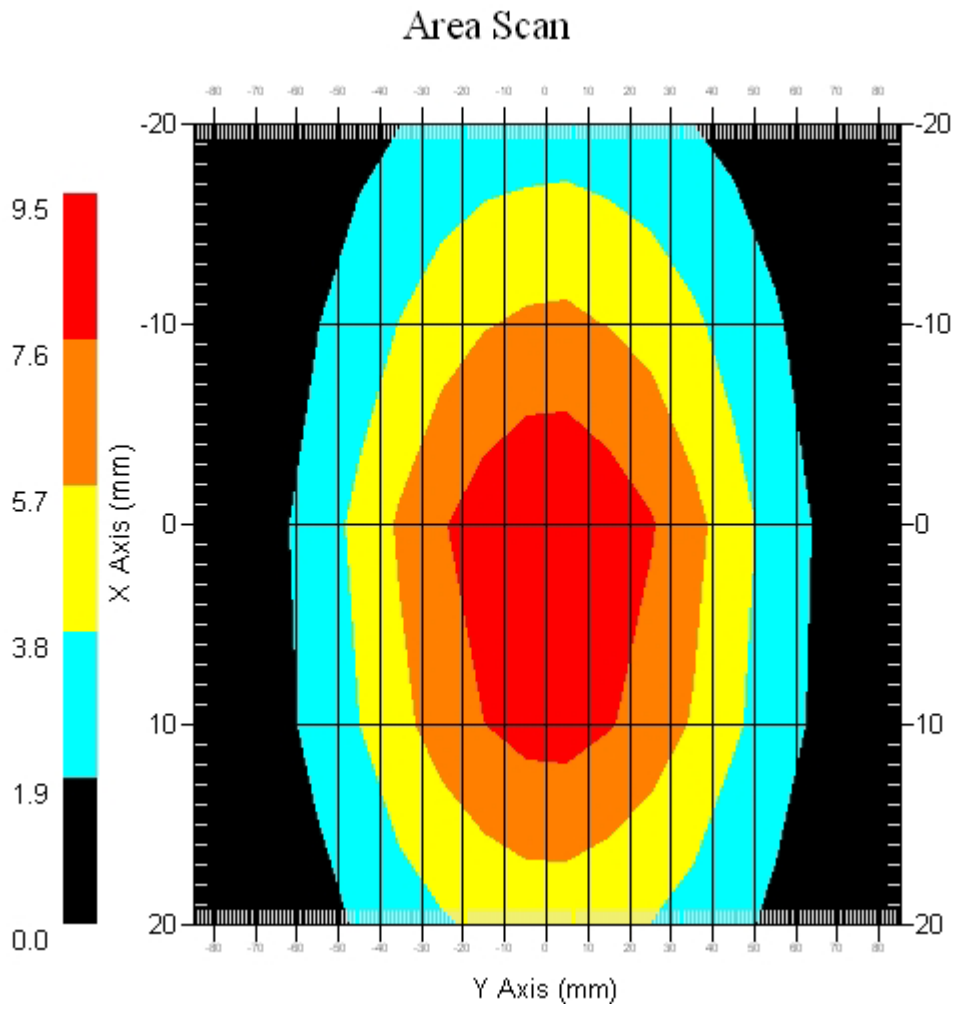
Crest Factor : 1
Temperature : 22.20 °C
Ambient Temp. : 22.50 °C
Set-up Date : 20-NOV-2007
Area Scan : 5x18x1 : Measurement x=10mm, y=10mm, z=4mm
Zoom Scan : 5x5x8 : Measurement x=8mm, y=8mm, z=4mm

Channel : Mid

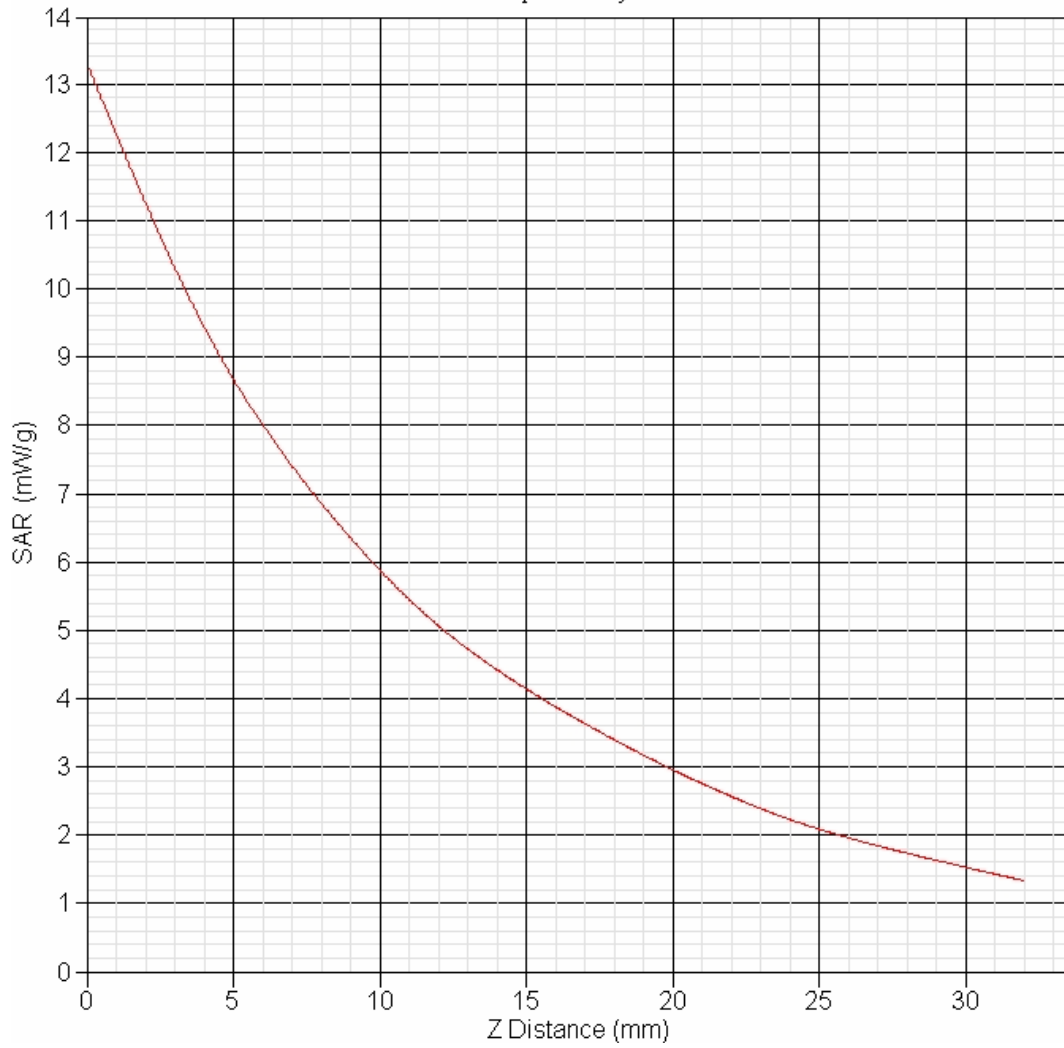


1 gram SAR value : 9.491 W/kg
10 gram SAR value : 6.364 W/kg
Area Scan Peak SAR : 10.499 W/kg
Zoom Scan Peak SAR : 15.312 W/kg

Area Scan Plot



SAR-Z Axis
at Hotspot x:0.00 y:0.00



2 1900 MHz System Validation Data

Report Date : 21-Nov-2007
Measurement Date : 21-Nov-2007

Product Data

Device Name : Dipole-1900
Serial No. : Validation
Type : Dipole
Model : Standard
Frequency : 1900.00 MHz
Max. Transmit Pwr : 1 W
Drift Time : 0 min(s)
Length : 68 mm
Width : 3.6 mm
Depth : 39.5 mm
Antenna Type : Internal
Power Drift-Start : 46.820 W/kg
Power Drift-Finish : 47.024 W/kg
Power Drift (%) : 0.436

Phantom Data

Name : APREL-Uni
Type : Uni-Phantom
Size (mm) : 280 x 280 x 200
Location : Center

Tissue Data

Type : HEAD
Serial No. : 1900
Frequency : 1900.00 MHz
Last Calib. Date : 21-NOV-2007
Ambient Temp. : 22.10 °C
Humidity : 51.00 RH%
Epsilon : 40.00 F/m
Sigma : 1.41 S/m
Density : 1000.00 kg/cu. m

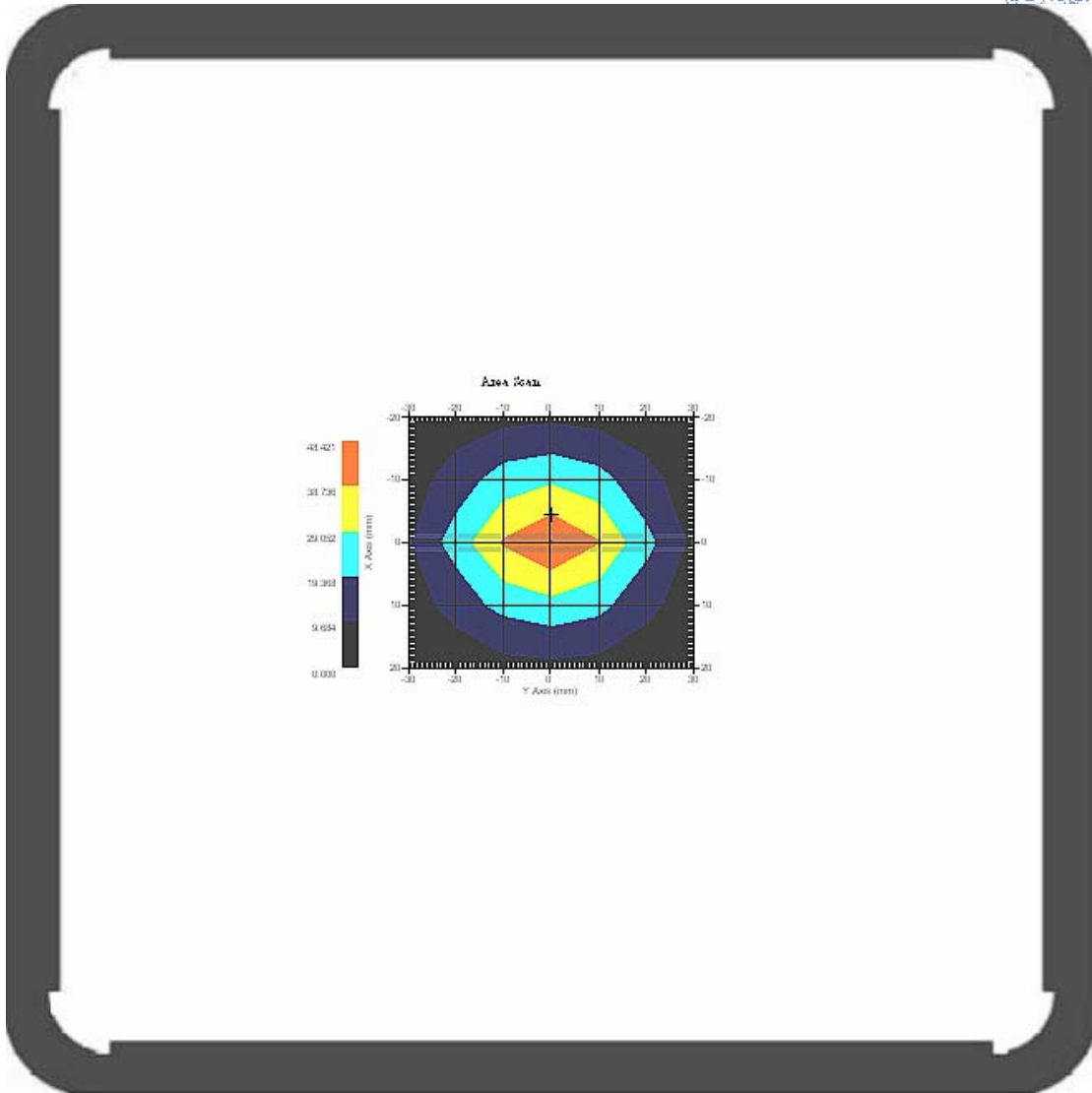
Probe Data

Name : E-field Probe
Model : ALS-E-020
Type : E-Field Triangle
Serial No. : 266
Last Calib. Date : 09-Jul-2007
Frequency : 1900.00 MHz
Duty Cycle Factor : 1
Conversion Factor : 5.5
Probe Sensitivity : 1.20 1.20 1.20 $\mu\text{V}/(\text{V}/\text{m})^2$
Compression Point : 95.00 mV
Offset : 1.56 mm

Measurement Data

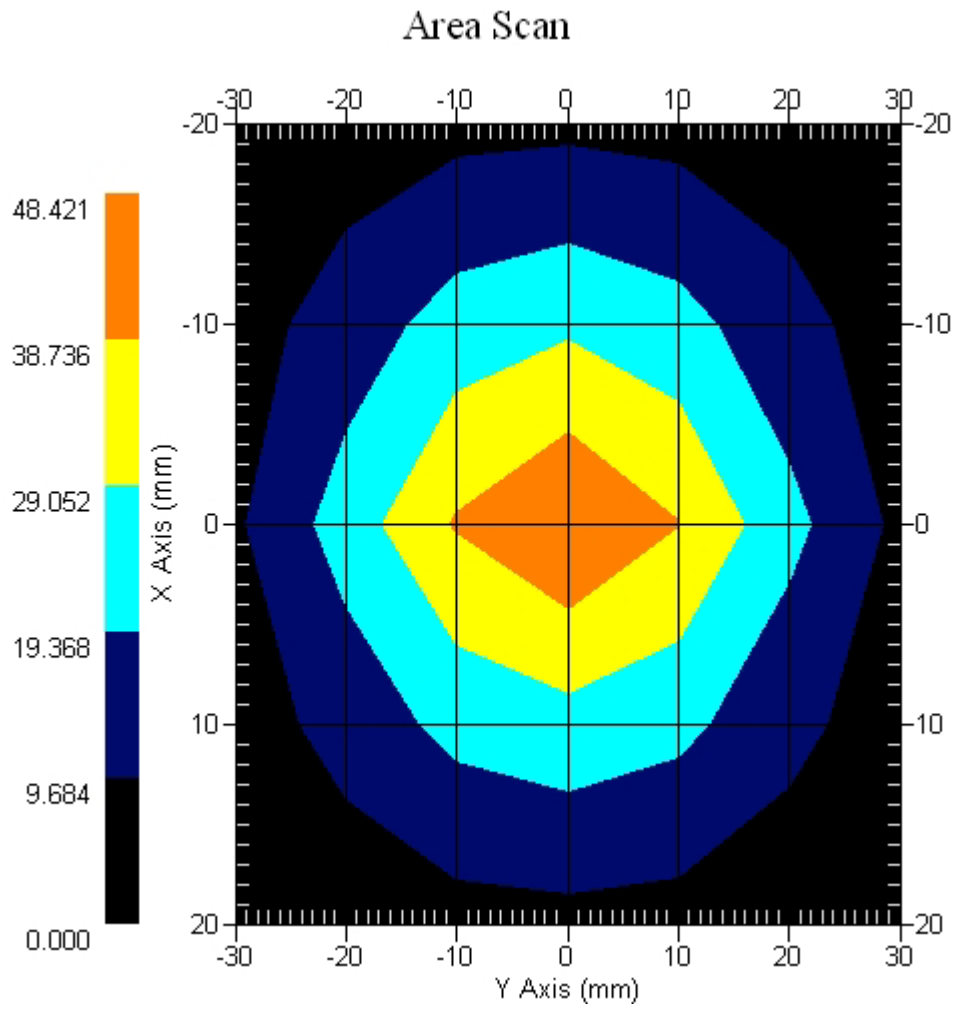
Crest Factor : 1
Tissue Temp. : 22.00 °C
Ambient Temp. : 22.10 °C
Set-up Date : 21-Nov-2007
Area Scan : 5x7x1 : Measurement x=10mm, y=10mm, z=4mm
Zoom Scan : 5x5x8 : Measurement x=8mm, y=8mm, z=4mm

Channel : Mid



1 gram SAR value : 40.864 W/kg
10 gram SAR value : 20.197 W/kg
Area Scan Peak SAR : 48.421 W/kg
Zoom Scan Peak SAR : 81.302 W/kg

Area Scan Plot



SAR-Z Axis
at Hotspot x:0.00 y:0.00

