

Appendix D

SAR Measurement Data

of

Model

V100

(with SIERRA EVDO Module, Model:MC5725V)

Brand: GETAC

1 FCH RC1_835MHz SAR measurement Data

SAR Test Report

Report Date : 19-Nov-2007
Measurement Date : 19-Nov-2007

Product Data

Device Name : v100
Serial No. : FCH-RC1_835-Around-Top-L
Type : Other
Frequency : 835.00 MHz
Max. Transmit Pwr : 24dBm
Drift Time : 0 min(s)
Length : 290 mm
Width : 20 mm
Depth : 5 mm
Antenna Type : Internal

Phantom Data

Name : APREL-Uni
Type : Uni-Phantom
Size (mm) : 280 x 280 x 200
Location : Center

Tissue Data

Type : BODY
Serial No. : 835_Body
Frequency : 835.00 MHz
Last Calib. Date : 19-Nov-2007
Temperature : 22.30 °C
Ambient Temp. : 22.50 °C
Humidity : 52.00 RH%
Epsilon : 55.98 F/m
Sigma : 0.95 S/m
Density : 1000.00 kg/cu. m

Probe Data

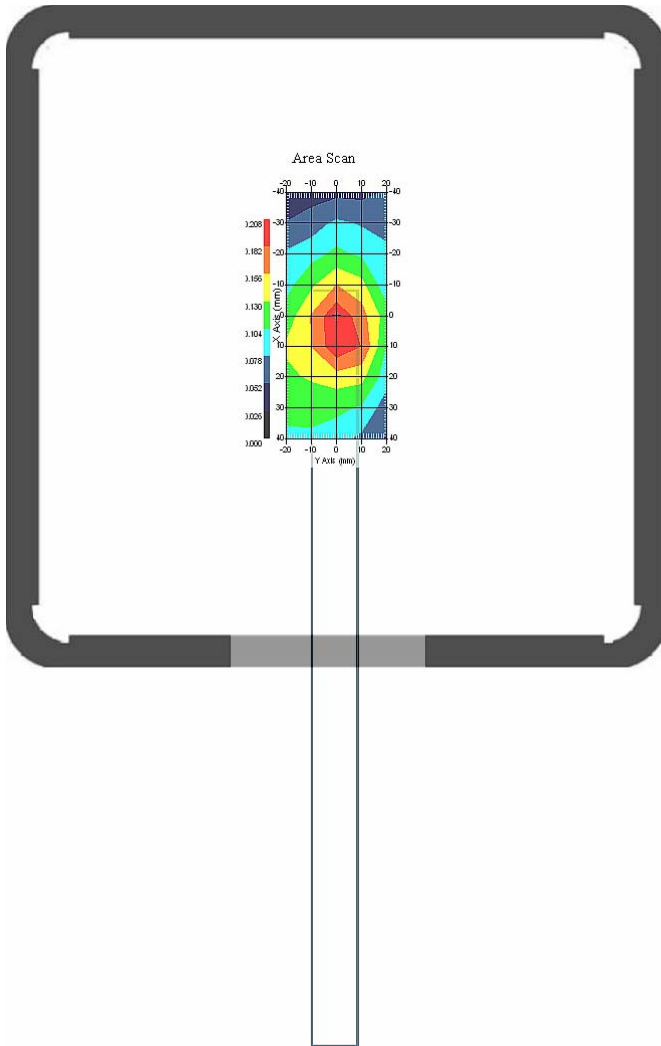
Name : E-field Probe
Model : ALS-E-020
Type : E-Field Triangle
Serial No. : 266
Last Calib. Date : 09-Jul-2007
Frequency : 835.00 MHz
Duty Cycle Factor: 1
Conversion Factor: 6.8
Probe Sensitivity: 1.20 1.20 1.20 $\mu\text{V}/(\text{V}/\text{m})^2$
Compression Point: 95.00 mV
Offset : 1.56 mm

1.1 835 MHz, EUT Position: Mode 2

Measurement Data

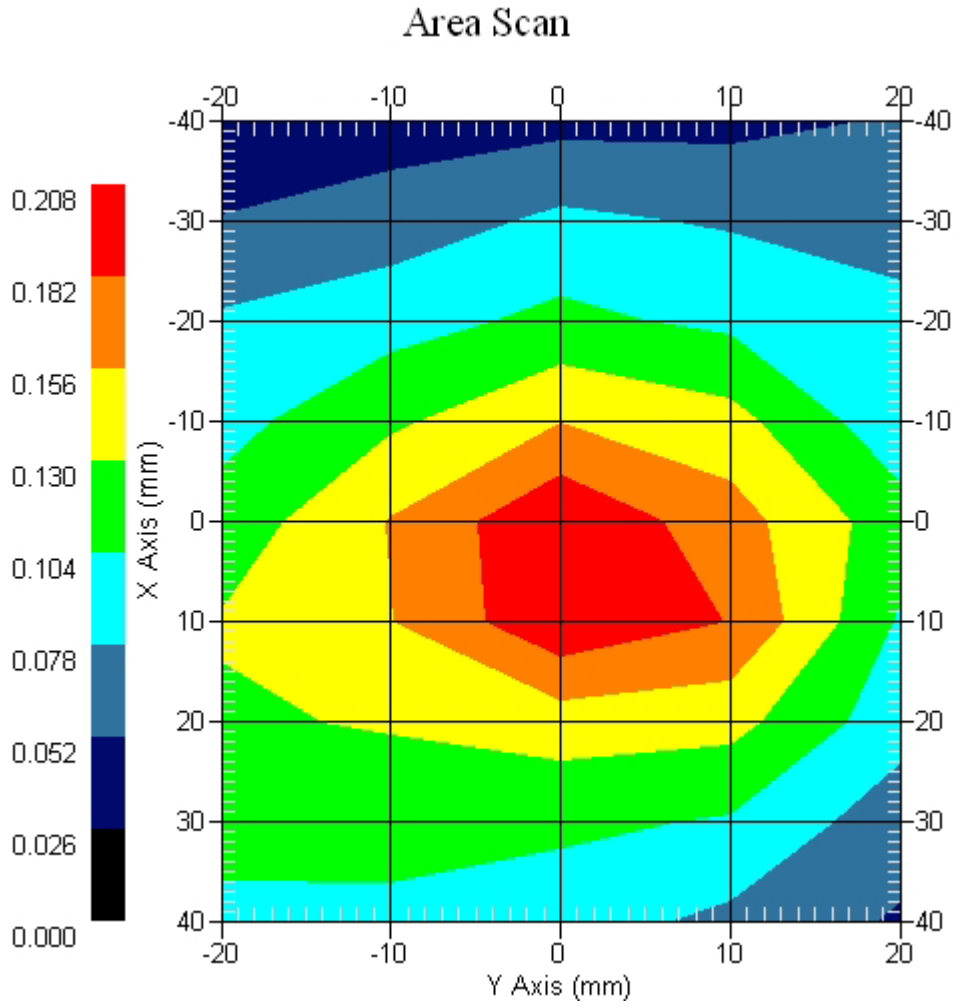
Crest Factor : 1
Set-up Date : 19-Nov-2007
Area Scan : 9x5x1 : Measurement x=10mm, y=10mm, z=4mm
Zoom Scan : 5x5x8 : Measurement x=8mm, y=8mm, z=4mm
DUT Position : Touch
Channel : Low

Power Drift-Start : 0.207 W/kg
Power Drift-Finish: 0.209 W/kg
Power Drift (%) : 0.805



1 gram SAR value : 0.208 W/kg
10 gram SAR value : 0.122 W/kg
Area Scan Peak SAR : 0.205 W/kg
Zoom Scan Peak SAR : 0.390 W/kg

Area Scan Plot

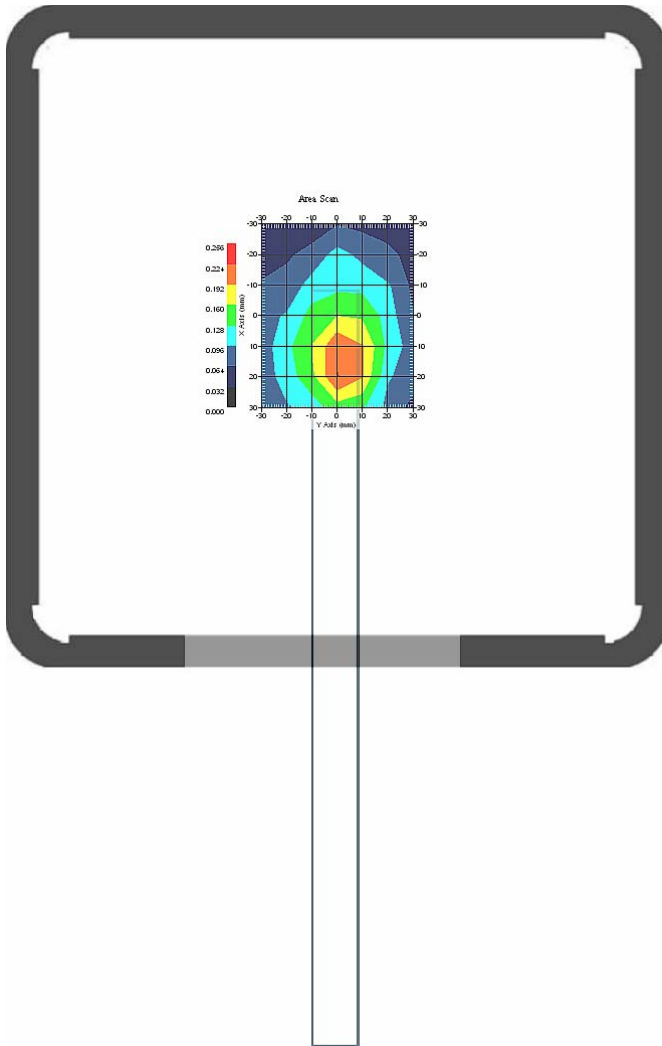


1.2 835 MHz, EUT Position: Mode 2

Measurement Data

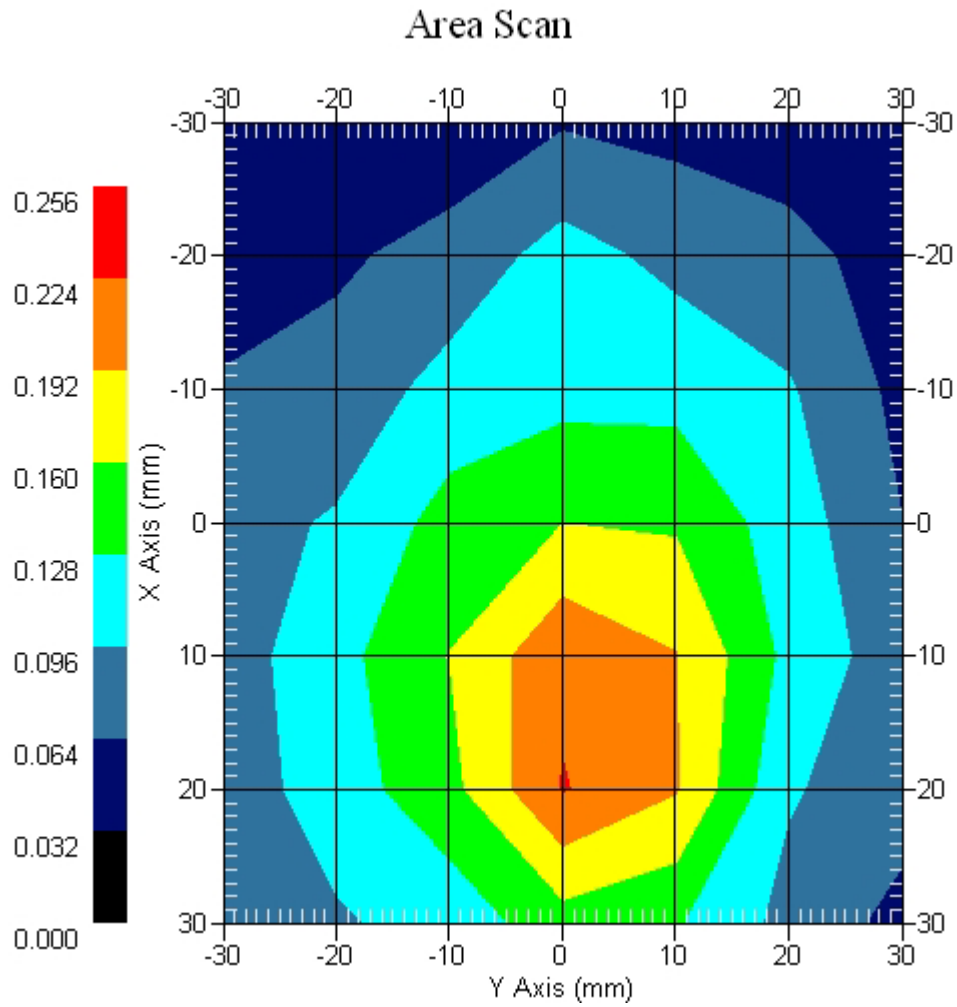
Crest Factor : 1
Set-up Date : 19-Nov-2007
Area Scan : 7x7x1 : Measurement x=10mm, y=10mm, z=4mm
Zoom Scan : 5x5x8 : Measurement x=8mm, y=8mm, z=4mm
DUT Position : Touch
Channel : Mid

Power Drift-Start : 0.187 W/kg
Power Drift-Finish: 0.191 W/kg
Power Drift (%) : 2.139



1 gram SAR value : 0.169 W/kg
10 gram SAR value : 0.099 W/kg
Area Scan Peak SAR : 0.226 W/kg
Zoom Scan Peak SAR : 0.320 W/kg

Area Scan Plot

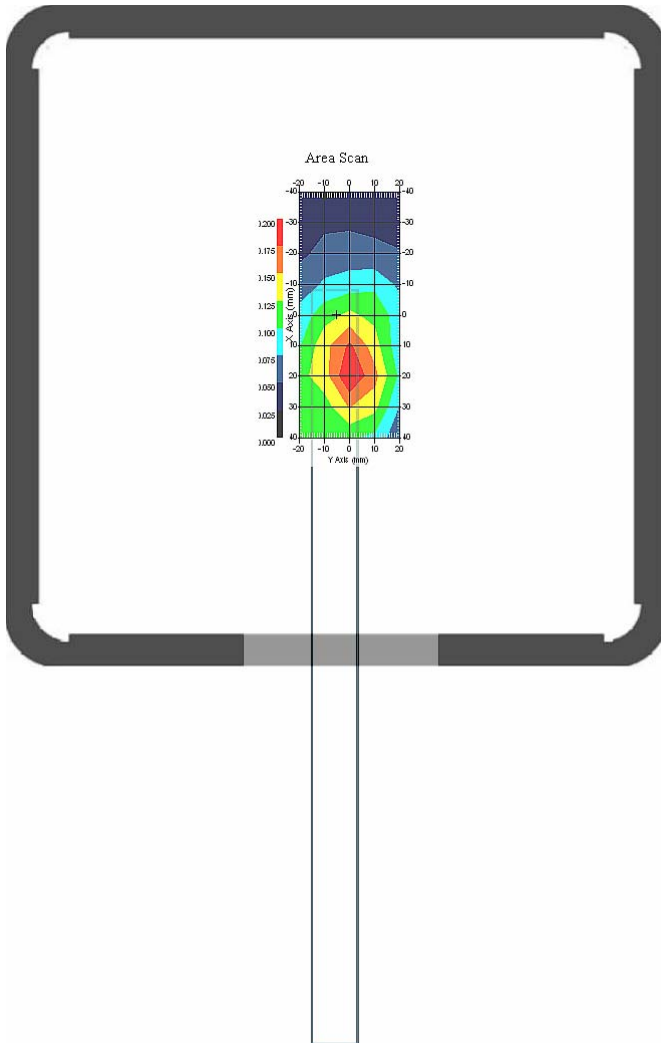


1.3 835 MHz, EUT Position: Mode 2

Measurement Data

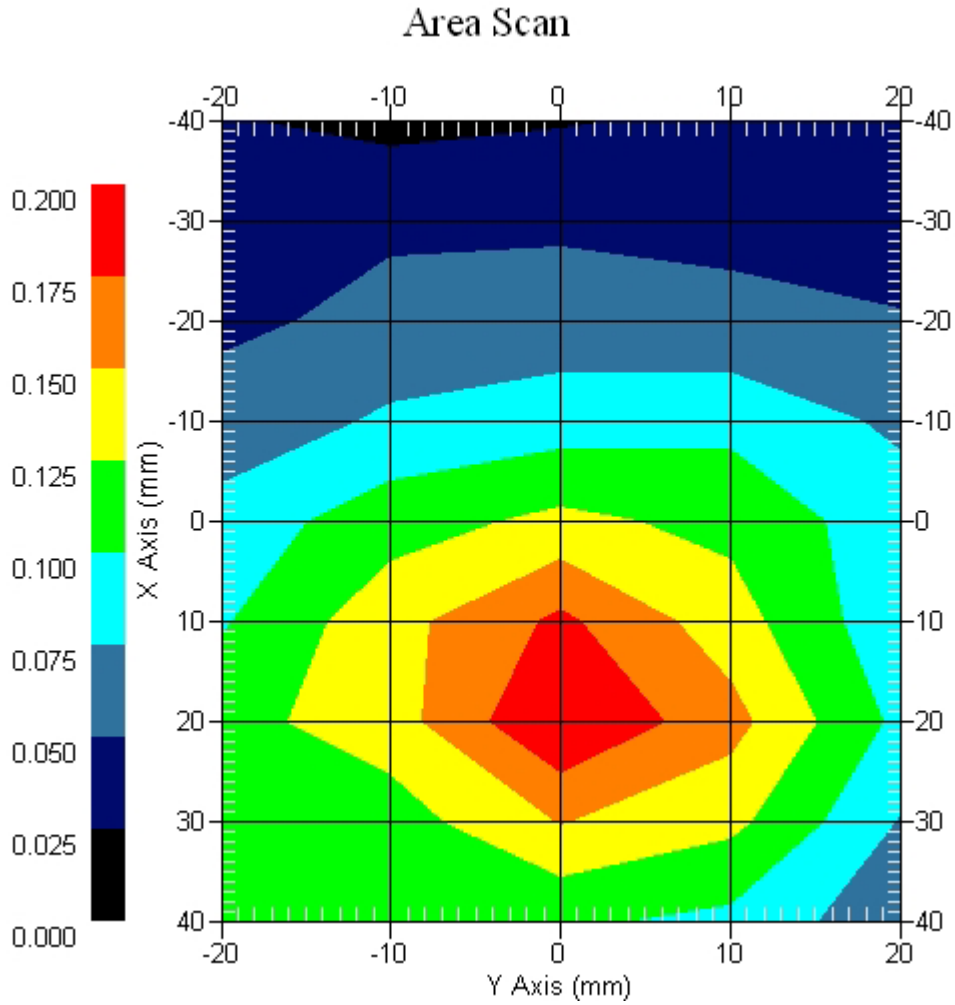
Crest Factor : 1
Set-up Date : 19-Nov-2007
Area Scan : 9x5x1 : Measurement x=10mm, y=10mm, z=4mm
Zoom Scan : 5x5x8 : Measurement x=8mm, y=8mm, z=4mm
DUT Position : Touch
Channel : High

Power Drift-Start : 0.140 W/kg
Power Drift-Finish: 0.143 W/kg
Power Drift (%) : 2.098



1 gram SAR value : 0.185 W/kg
10 gram SAR value : 0.112 W/kg
Area Scan Peak SAR : 0.200 W/kg
Zoom Scan Peak SAR : 0.320 W/kg

Area Scan Plot

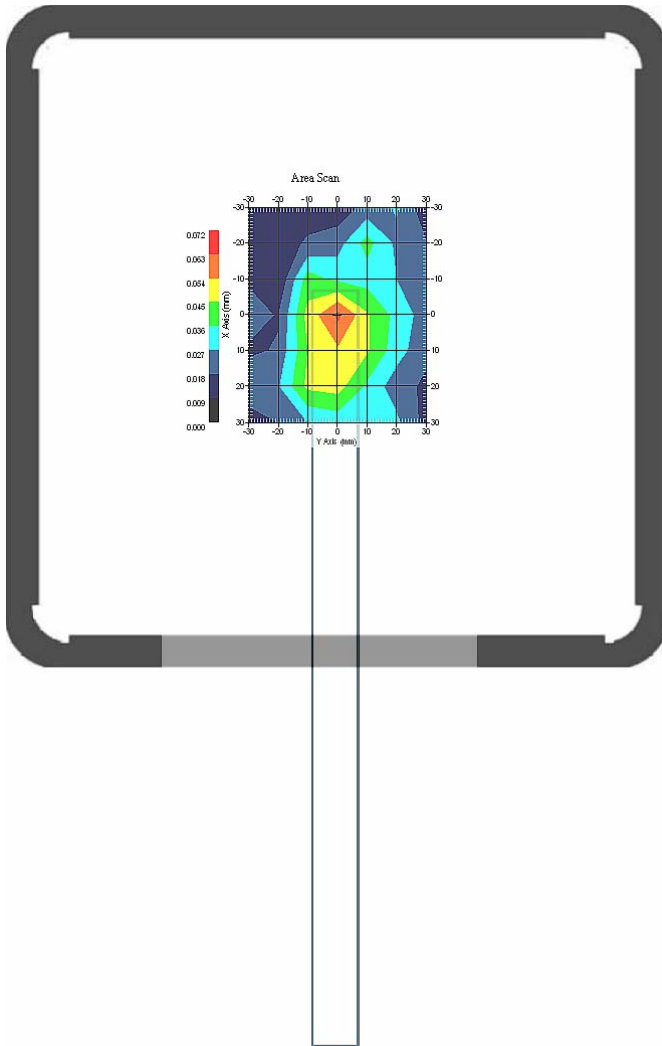


1.4 835 MHz, EUT Position: Mode 3

Measurement Data

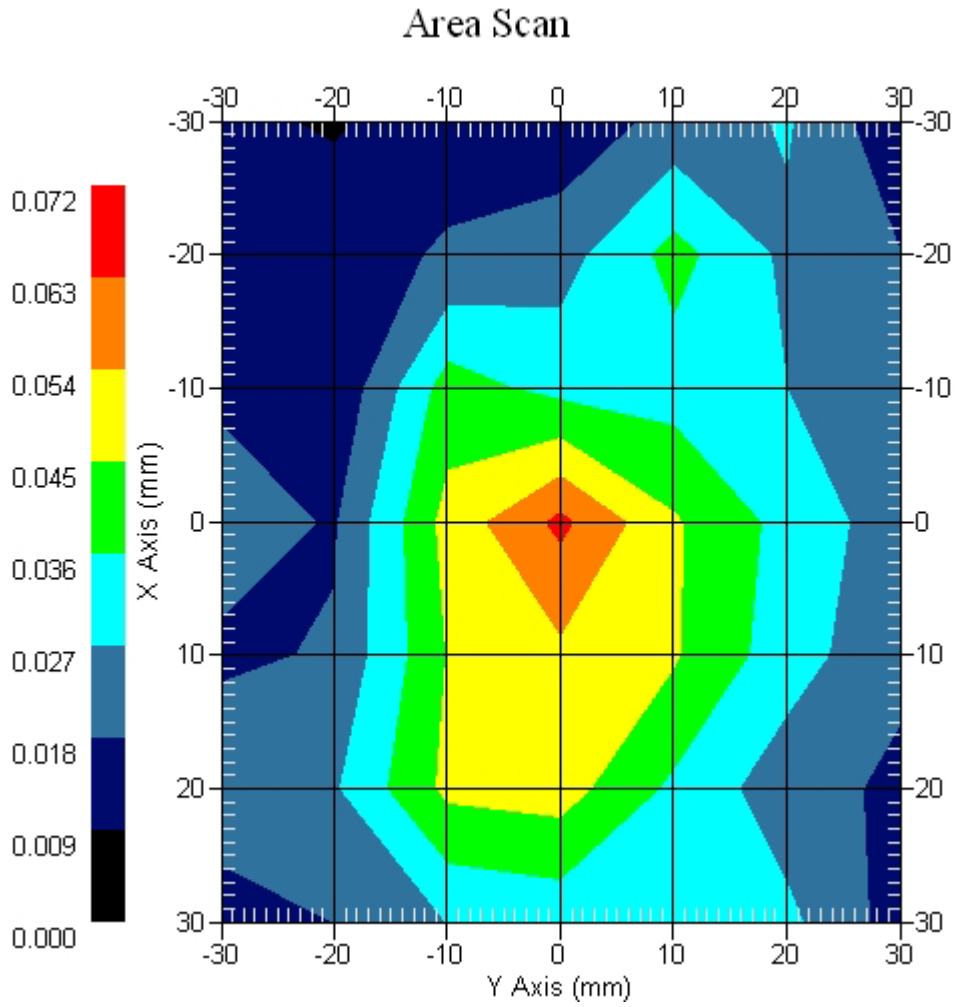
Crest Factor : 1
Set-up Date : 19-Nov-2007
Area Scan : 7x7x1 : Measurement x=10mm, y=10mm, z=4mm
Zoom Scan : 5x5x8 : Measurement x=8mm, y=8mm, z=4mm
DUT Position : Touch
Channel : Mid

Power Drift-Start : 0.052 W/kg
Power Drift-Finish: 0.054 W/kg
Power Drift (%) : 3.851



1 gram SAR value : 0.060 W/kg
10 gram SAR value : 0.034 W/kg
Area Scan Peak SAR : 0.065 W/kg
Zoom Scan Peak SAR : 0.120 W/kg

Area Scan Plot

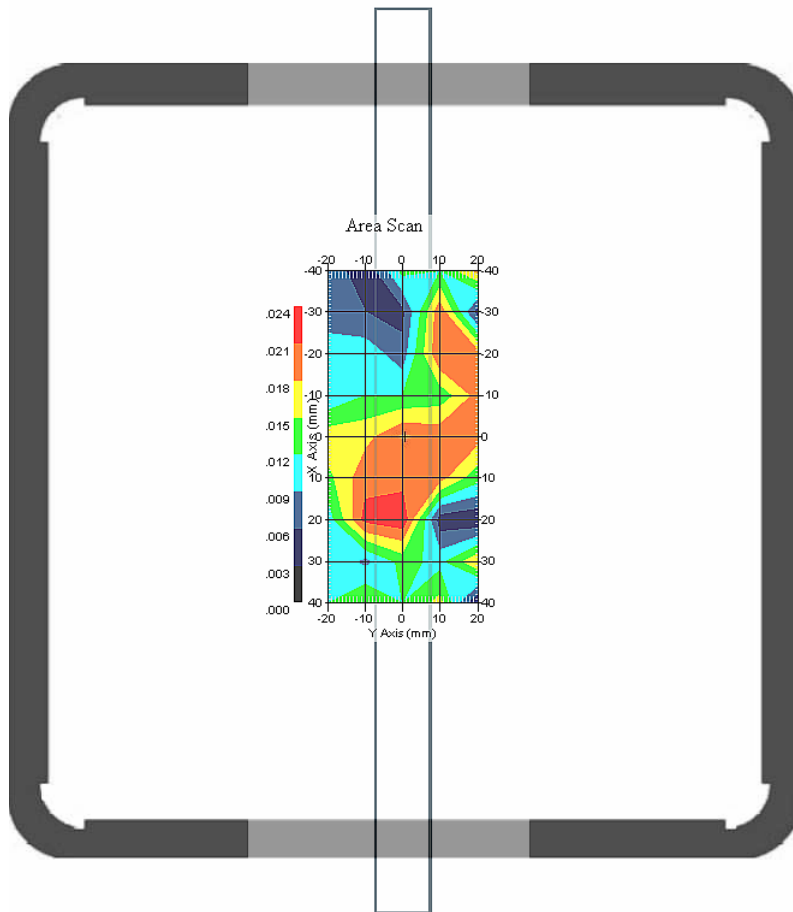


1.5 835 MHz, EUT Position: Mode 4

Measurement Data

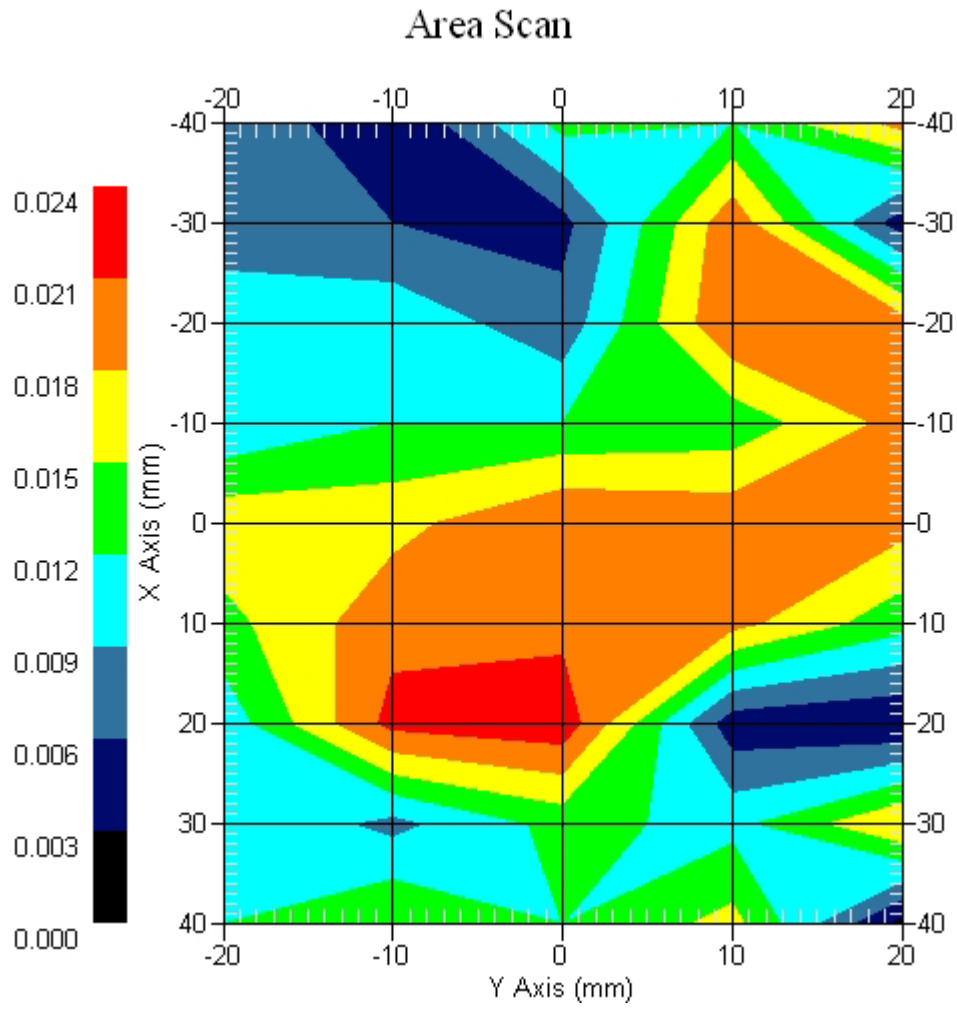
Crest Factor : 1
Set-up Date : 19-Nov-2007
Area Scan : 9x5x1 : Measurement x=10mm, y=10mm, z=4mm
Zoom Scan : 5x5x8 : Measurement x=8mm, y=8mm, z=4mm
DUT Position : Touch
Channel : Mid

Power Drift-Start : 0.019 W/kg
Power Drift-Finish: 0.018 W/kg
Power Drift (%) : -4.174



1 gram SAR value : 0.029 W/kg
10 gram SAR value : 0.015 W/kg
Area Scan Peak SAR : 0.028 W/kg
Zoom Scan Peak SAR : 0.050 W/kg

Area Scan Plot

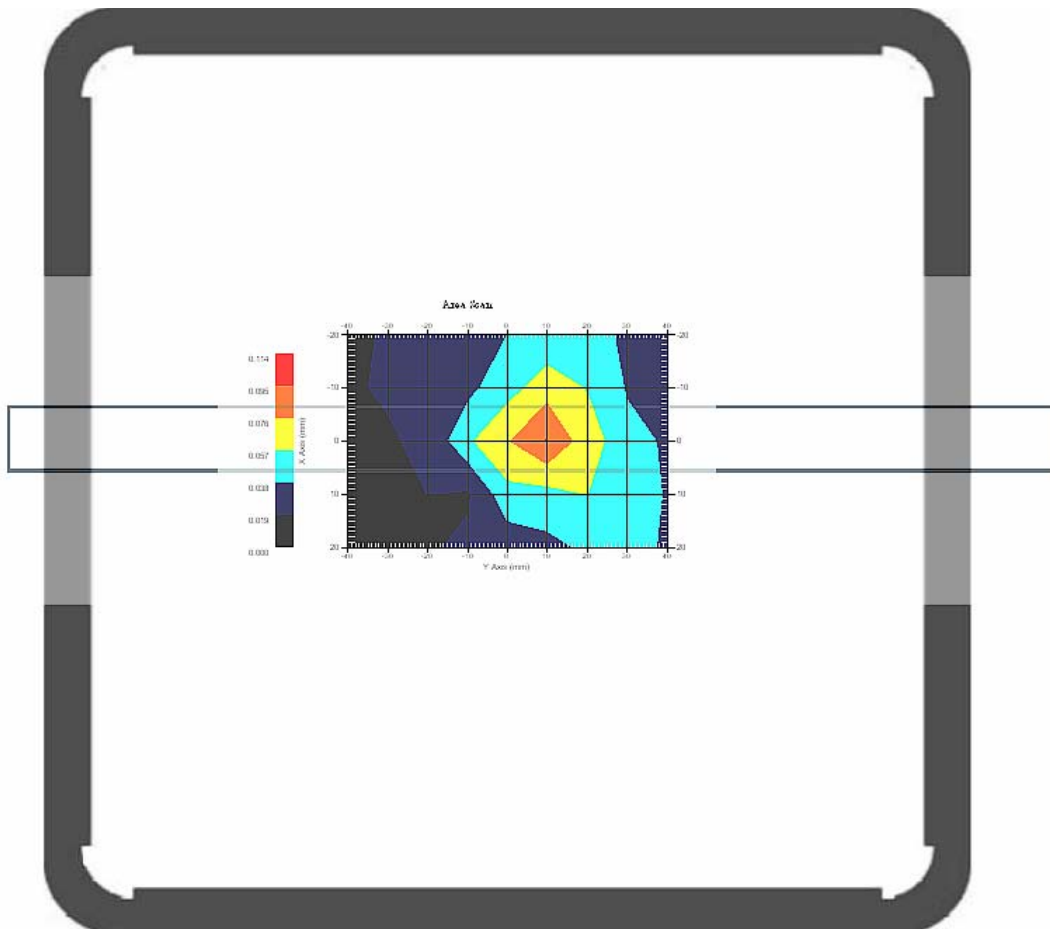


1.6 835 MHz, EUT Position: Mode 5

Measurement Data

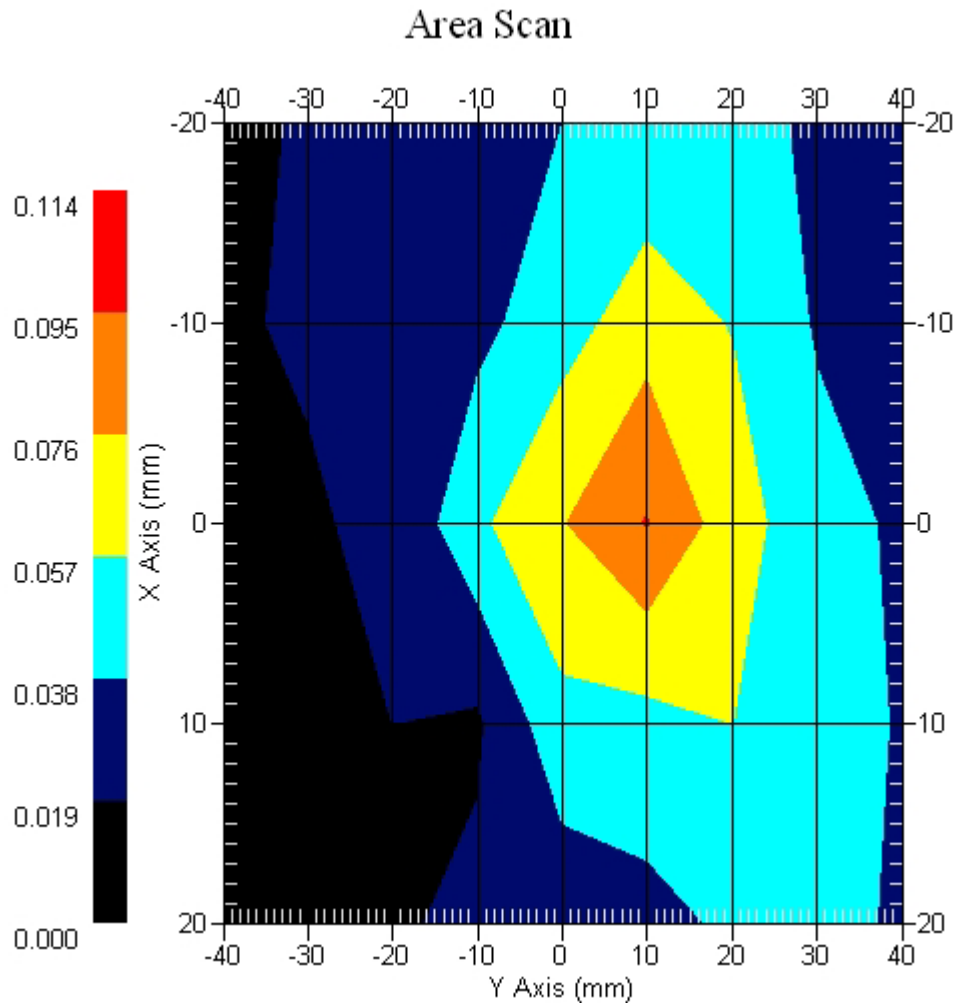
Crest Factor : 1
Set-up Date : 19-Nov-2007
Area Scan : 5x9x1 : Measurement x=10mm, y=10mm, z=4mm
Zoom Scan : 5x5x8 : Measurement x=8mm, y=8mm, z=4mm
DUT Position : Touch
Channel : Mid

Power Drift-Start : 0.050 W/kg
Power Drift-Finish: 0.051 W/kg
Power Drift (%) : 2.533



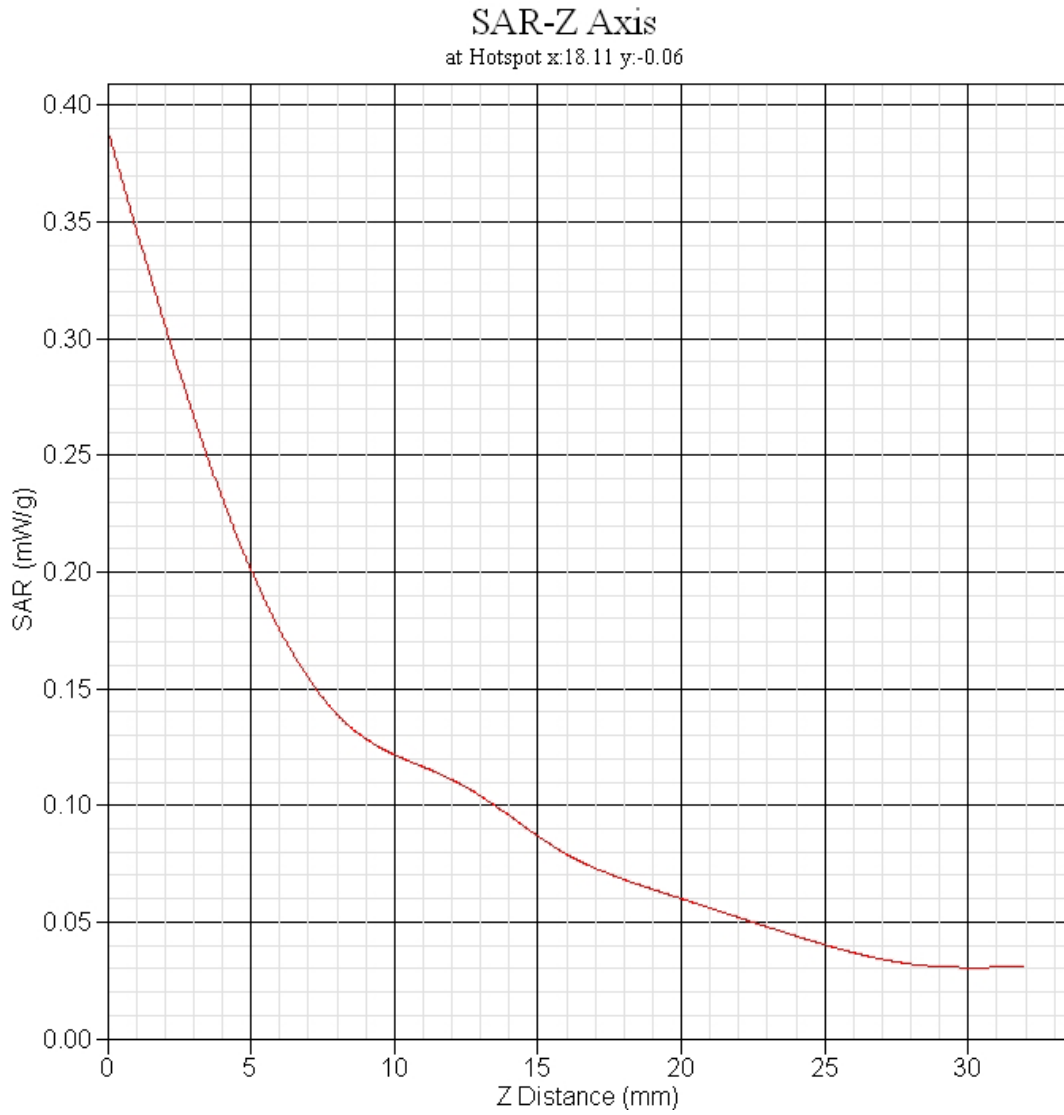
1 gram SAR value : 0.080 W/kg
10 gram SAR value : 0.052 W/kg
Area Scan Peak SAR : 0.096 W/kg
Zoom Scan Peak SAR : 0.130 W/kg

Area Scan Plot



1.7 835MHz Z-Axis plot

Frequency: 835MHz, EUT



2 FCH RC1_1900MHz SAR measurement Data

SAR Test Report

Report Date : 19-Nov-2007
Measurement Date : 19-Nov-2007

Product Data

Device Name : v100
Serial No. : FCH-RC1_1900-Around-Top
Type : Other
Frequency : 1900.00 MHz
Max. Transmit Pwr : 24dBm
Drift Time : 0 min(s)
Length : 290 mm
Width : 20 mm
Depth : 5 mm
Antenna Type : Internal

Phantom Data

Name : APREL-Uni
Type : Uni-Phantom
Size (mm) : 280 x 280 x 200
Location : Center

Tissue Data

Type : BODY
Serial No. : 1900_Body
Frequency : 1900.00 MHz
Last Calib. Date : 19-Nov-2007
Temperature : 22.40 °C
Ambient Temp. : 22.60 °C
Humidity : 53.00 RH%
Epsilon : 51.16 F/m
Sigma : 1.48 S/m
Density : 1000.00 kg/cu. m

Probe Data

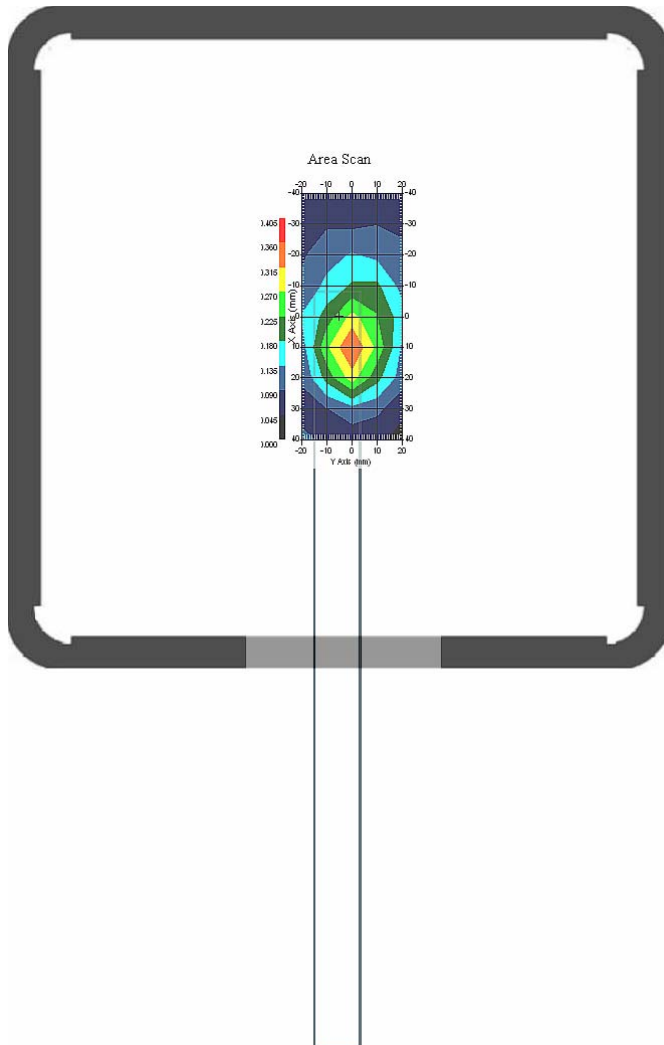
Name : E-field Probe
Model : ALS-E-020
Type : E-Field Triangle
Serial No. : 266
Last Calib. Date : 09-Jul-2007
Frequency : 1900.00 MHz
Duty Cycle Factor: 1
Conversion Factor: 4.9
Probe Sensitivity: 1.20 1.20 1.20 $\mu\text{V}/(\text{V}/\text{m})^2$
Compression Point: 95.00 mV
Offset : 1.56 mm

2.1 1900 MHz, EUT Position: Mode 2

Measurement Data

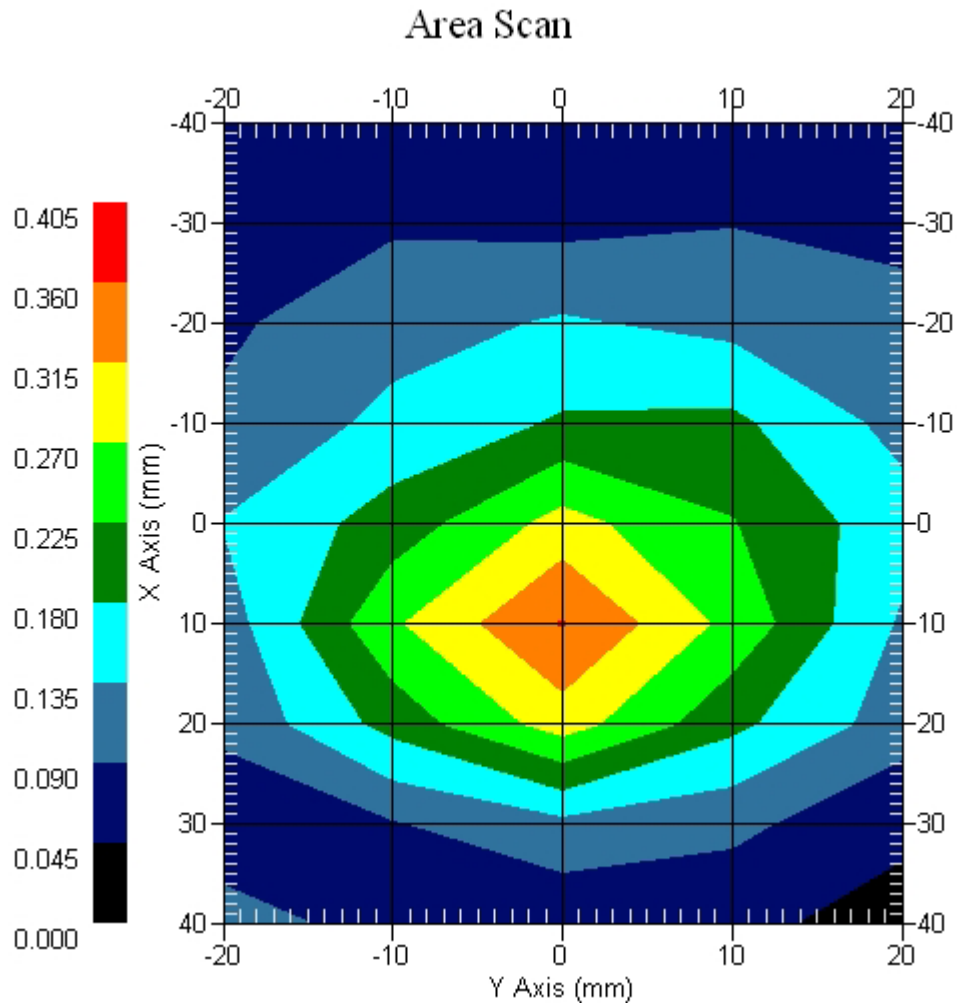
Crest Factor : 1
Set-up Date : 19-Nov-2007
Area Scan : 9x5x1 : Measurement x=10mm, y=10mm, z=4mm
Zoom Scan : 5x5x8 : Measurement x=8mm, y=8mm, z=4mm
DUT Position : Touch
Channel : Low

Power Drift-Start : 0.292 W/kg
Power Drift-Finish: 0.301 W/kg
Power Drift (%) : 3.094



1 gram SAR value : 0.315 W/kg
10 gram SAR value : 0.175 W/kg
Area Scan Peak SAR : 0.363 W/kg
Zoom Scan Peak SAR : 0.560 W/kg

Area Scan Plot

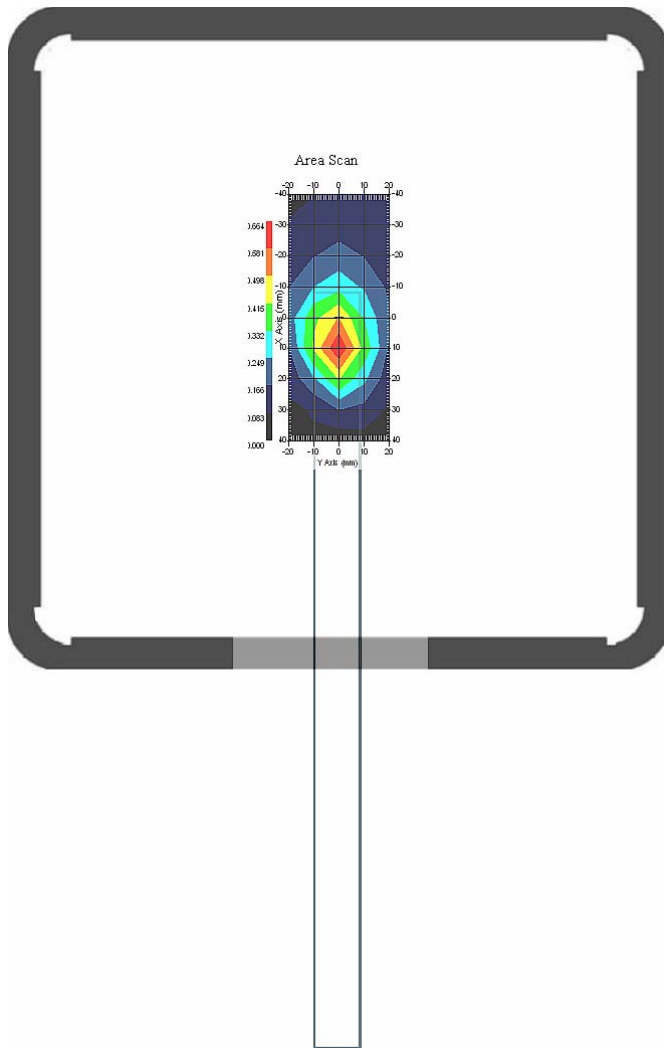


2.2 1900 MHz, EUT Position: Mode 2

Measurement Data

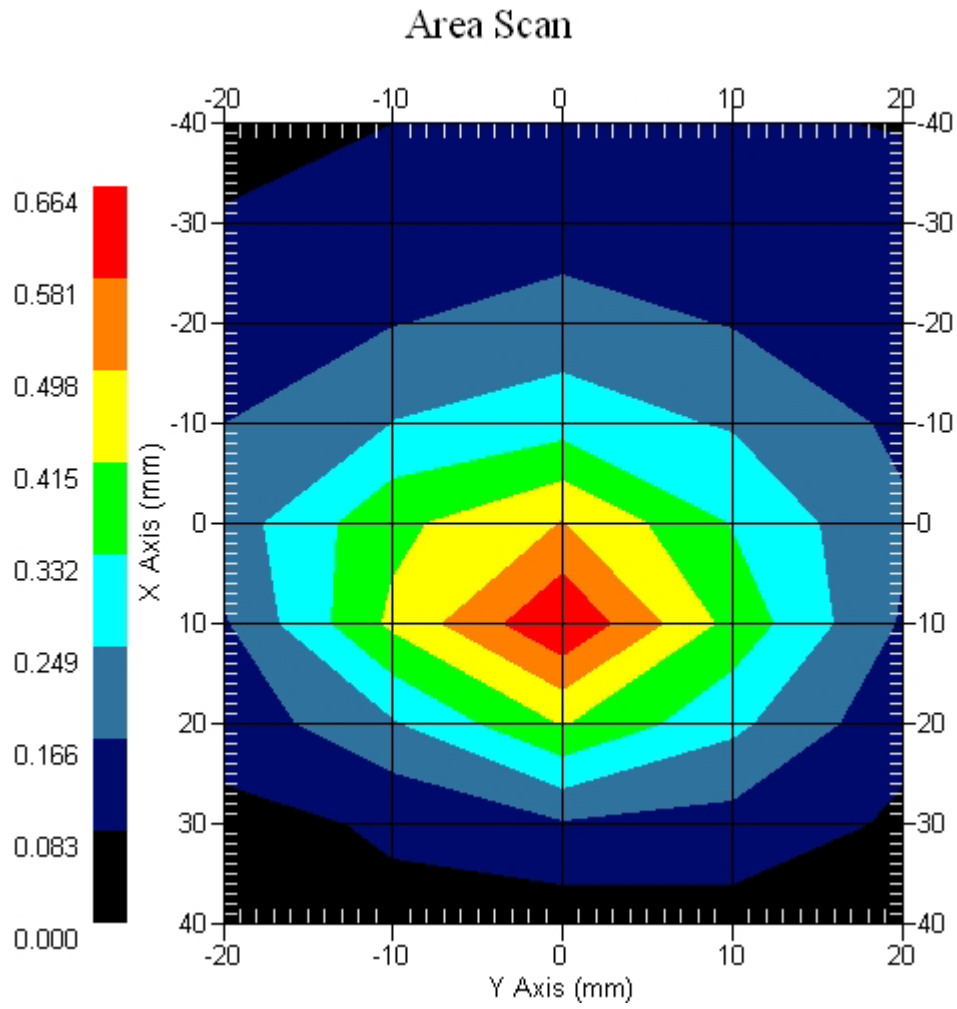
Crest Factor : 1
Set-up Date : 19-Nov-2007
Area Scan : 9x5x1 : Measurement x=10mm, y=10mm, z=4mm
Zoom Scan : 5x5x8 : Measurement x=8mm, y=8mm, z=4mm
DUT Position : Touch
Channel : Mid

Power Drift-Start : 0.346 W/kg
Power Drift-Finish: 0.337 W/kg
Power Drift (%) : -2.617



1 gram SAR value : 0.557 W/kg
10 gram SAR value : 0.291 W/kg
Area Scan Peak SAR : 0.660 W/kg
Zoom Scan Peak SAR : 1.030 W/kg

Area Scan Plot

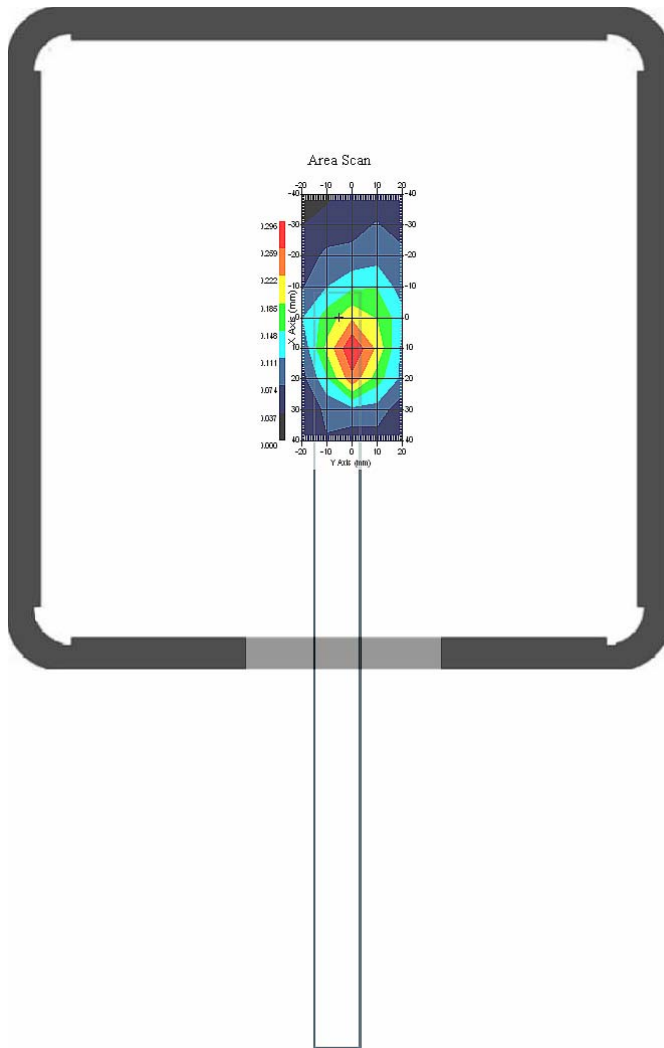


2.3 1900 MHz, EUT Position: Mode 2

Measurement Data

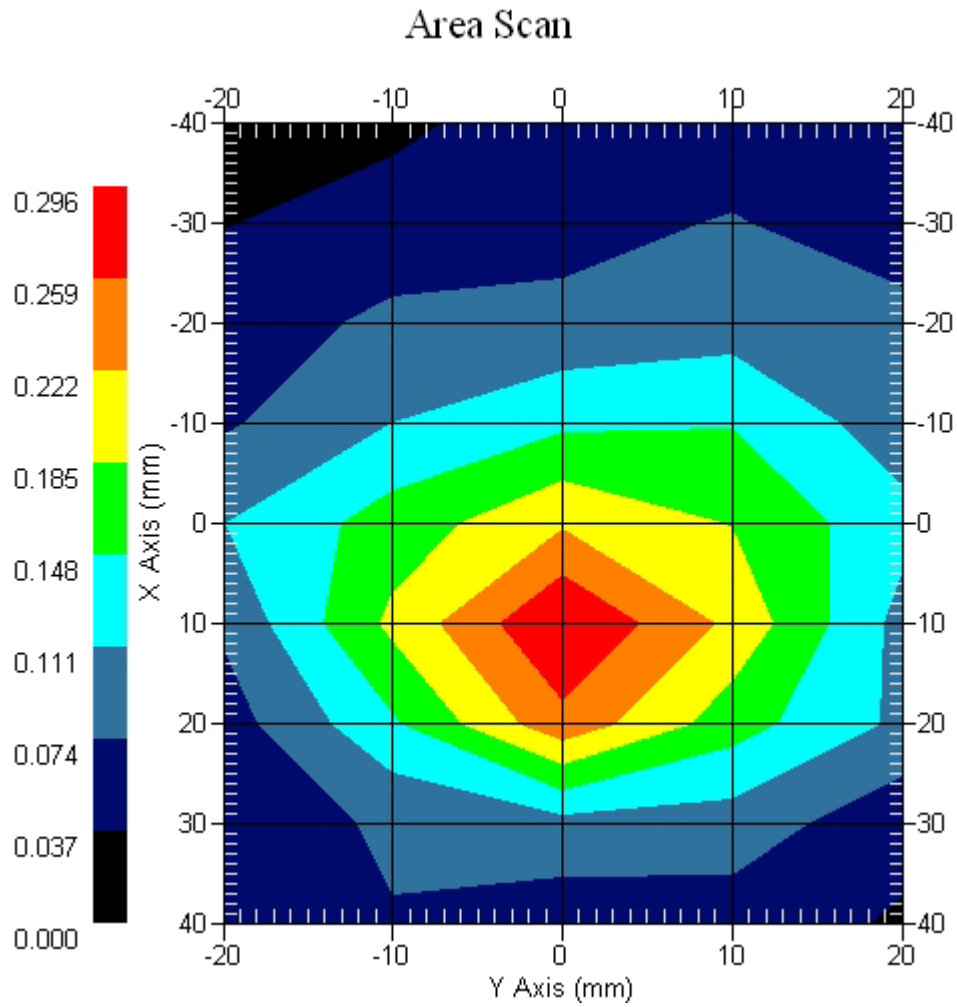
Crest Factor : 1
Set-up Date : 19-Nov-2007
Area Scan : 9x5x1 : Measurement x=10mm, y=10mm, z=4mm
Zoom Scan : 5x5x8 : Measurement x=8mm, y=8mm, z=4mm
DUT Position : Touch
Channel : High

Power Drift-Start : 0.234 W/kg
Power Drift-Finish: 0.226 W/kg
Power Drift (%) : -3.420



1 gram SAR value : 0.248 W/kg
10 gram SAR value : 0.120 W/kg
Area Scan Peak SAR : 0.296 W/kg
Zoom Scan Peak SAR : 0.430 W/kg

Area Scan Plot

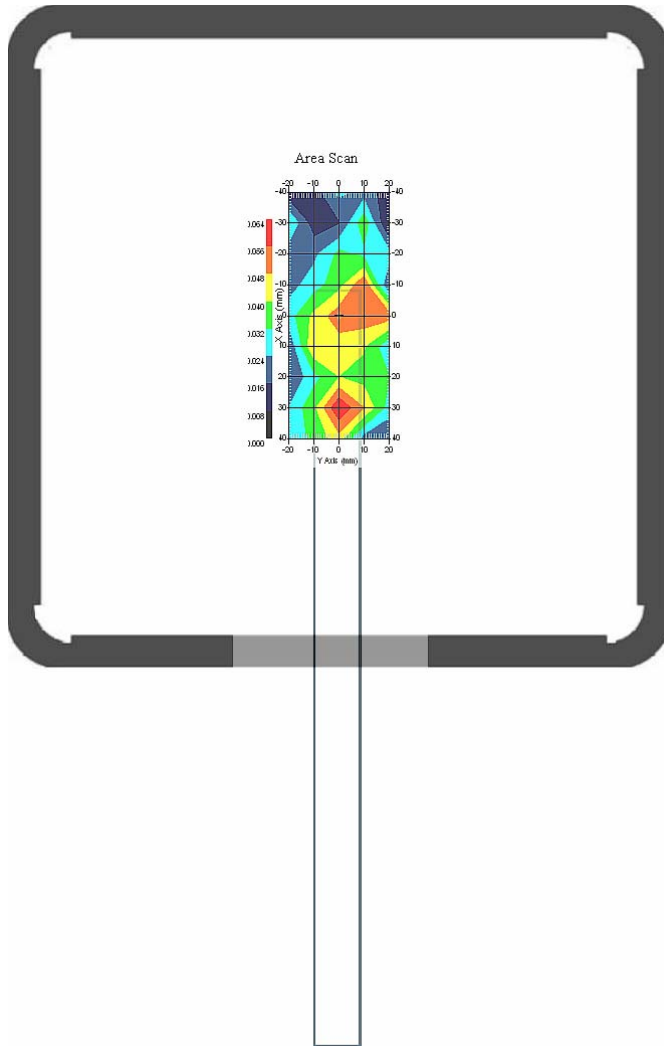


2.4 1900 MHz, EUT Position: Mode 3

Measurement Data

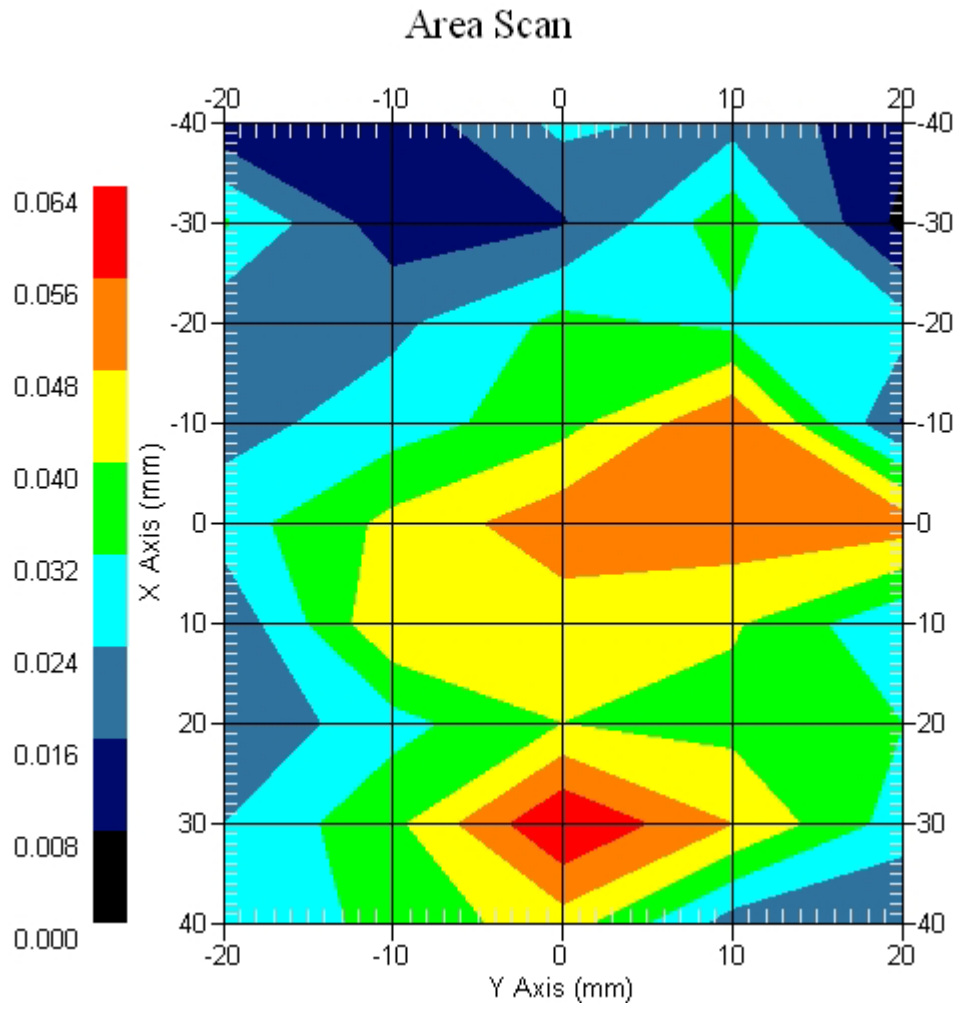
Crest Factor : 1
Set-up Date : 19-Nov-2007
Area Scan : 9x5x1 : Measurement x=10mm, y=10mm, z=4mm
Zoom Scan : 5x5x8 : Measurement x=8mm, y=8mm, z=4mm
DUT Position : Touch
Channel : Mid

Power Drift-Start : 0.037 W/kg
Power Drift-Finish: 0.038 W/kg
Power Drift (%) : 2.611



1 gram SAR value : 0.060 W/kg
10 gram SAR value : 0.031 W/kg
Area Scan Peak SAR : 0.064 W/kg
Zoom Scan Peak SAR : 0.130 W/kg

Area Scan Plot

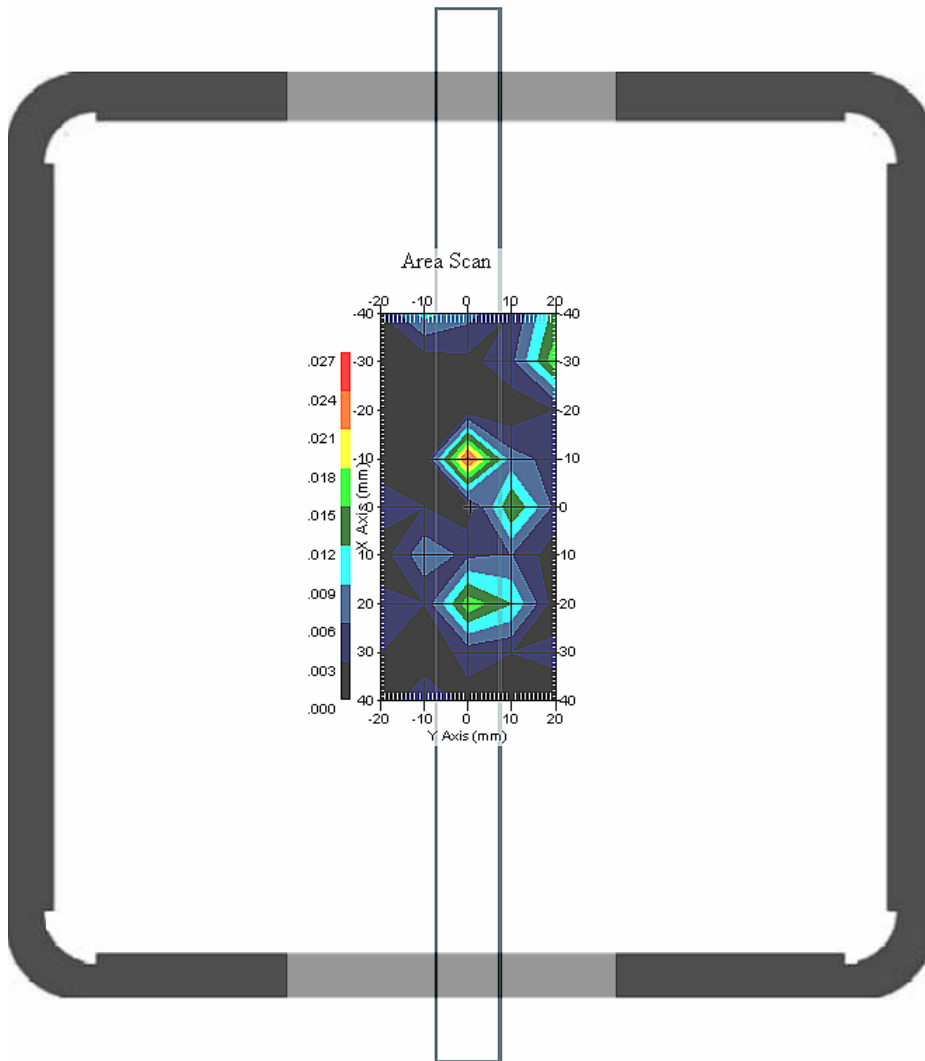


2.5 1900 MHz, EUT Position: Mode 4

Measurement Data

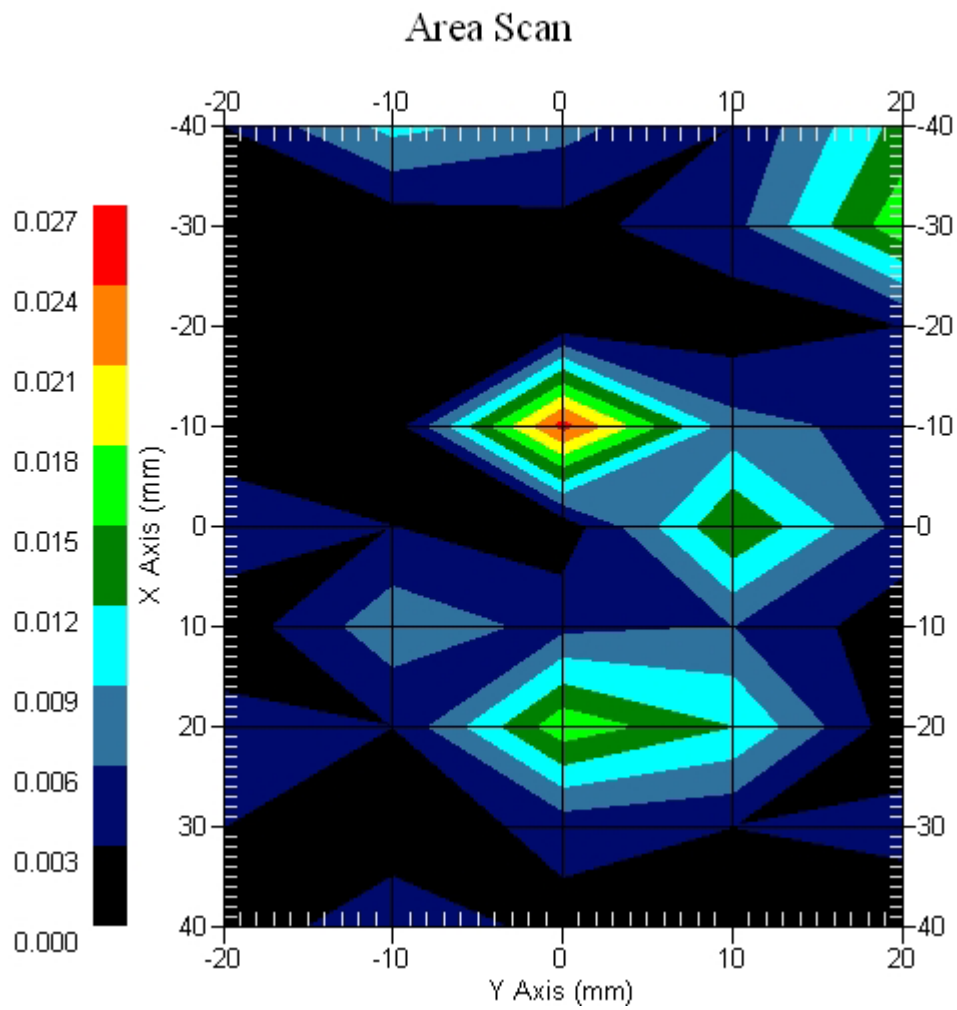
Crest Factor : 1
Set-up Date : 19-Nov-2007
Area Scan : 9x5x1 : Measurement x=10mm, y=10mm, z=4mm
Zoom Scan : 5x5x8 : Measurement x=8mm, y=8mm, z=4mm
DUT Position : Touch
Channel : Mid

Power Drift-Start : 0.007 W/kg
Power Drift-Finish: 0.006 W/kg
Power Drift (%) : -3.544



1 gram SAR value : 0.013 W/kg
10 gram SAR value : 0.008 W/kg
Area Scan Peak SAR : 0.025 W/kg
Zoom Scan Peak SAR : 0.032 W/kg

Area Scan Plot

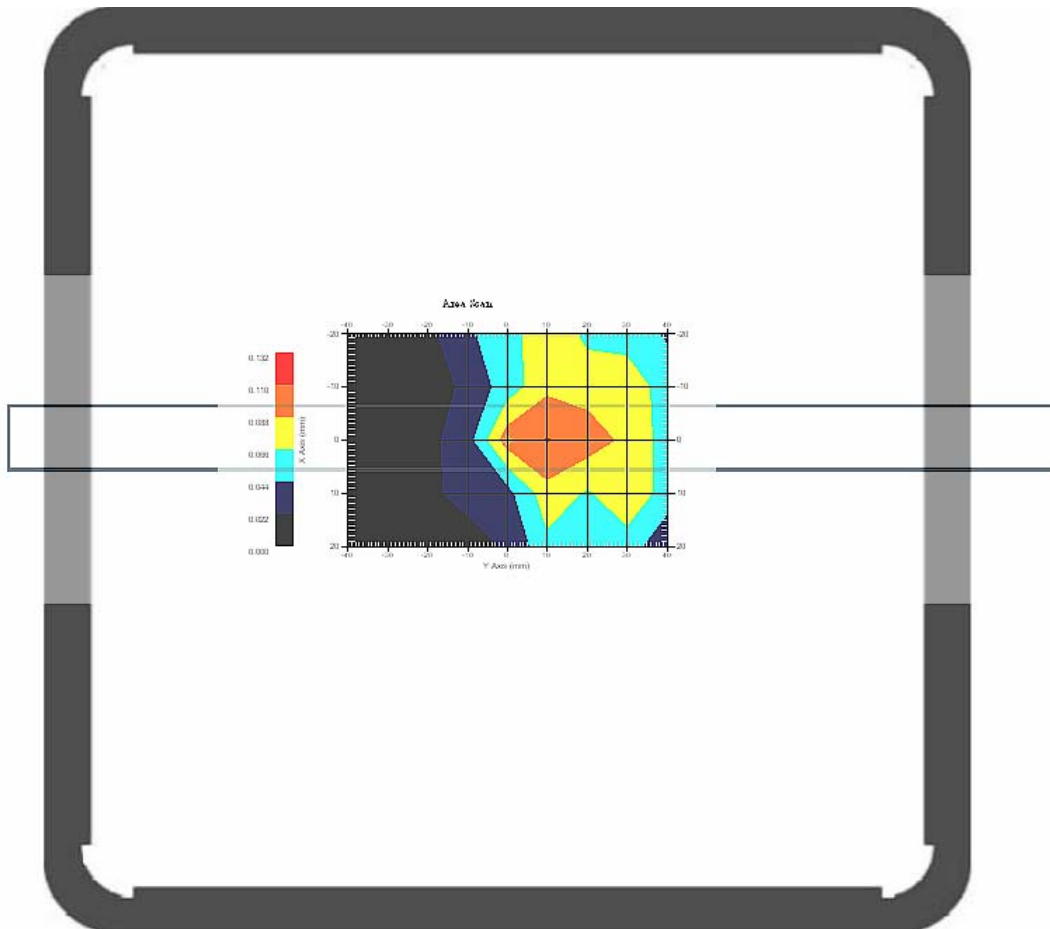


2.6 1900 MHz, EUT Position: Mode 5

Measurement Data

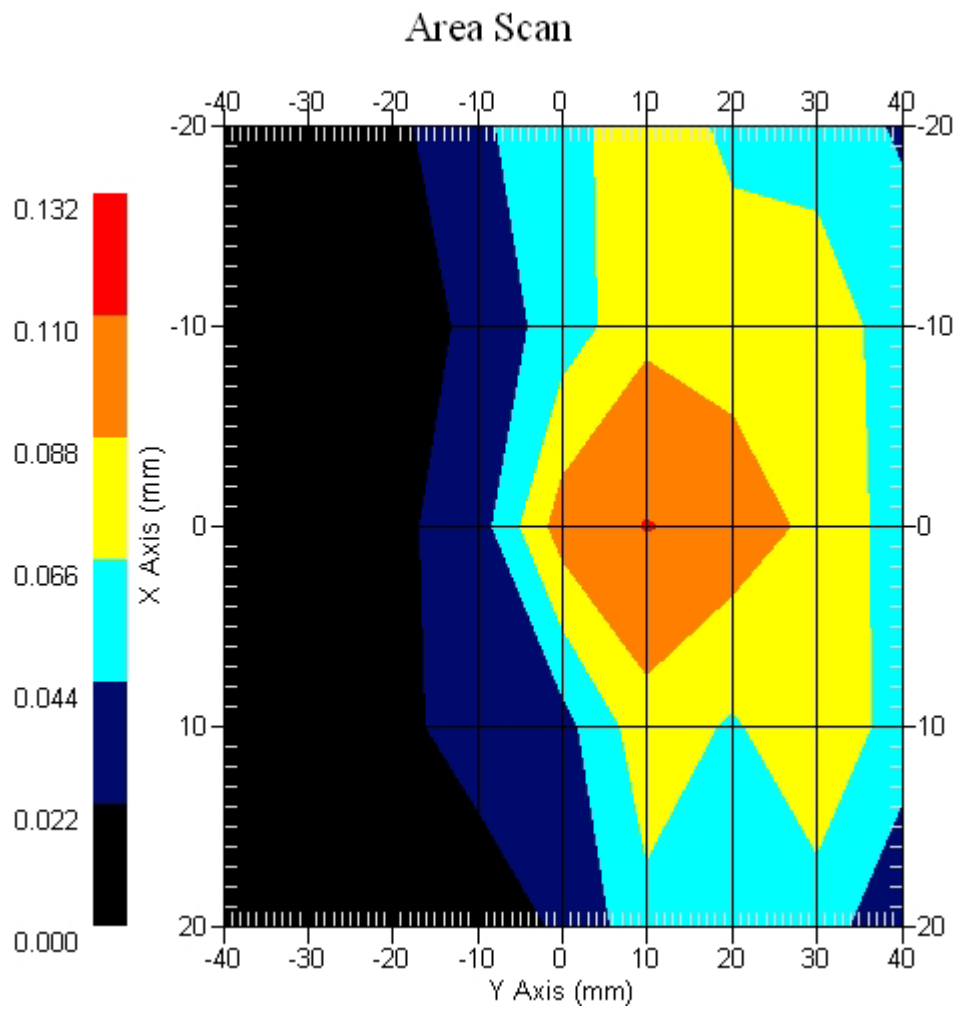
Crest Factor : 1
Set-up Date : 19-Nov-2007
Area Scan : 5x9x1 : Measurement x=10mm, y=10mm, z=4mm
Zoom Scan : 5x5x8 : Measurement x=8mm, y=8mm, z=4mm
DUT Position : Touch
Channel : Mid

Power Drift-Start : 0.054 W/kg
Power Drift-Finish: 0.052 W/kg
Power Drift (%) : -3.744



1 gram SAR value : 0.088 W/kg
10 gram SAR value : 0.052 W/kg
Area Scan Peak SAR : 0.111 W/kg
Zoom Scan Peak SAR : 0.280 W/kg

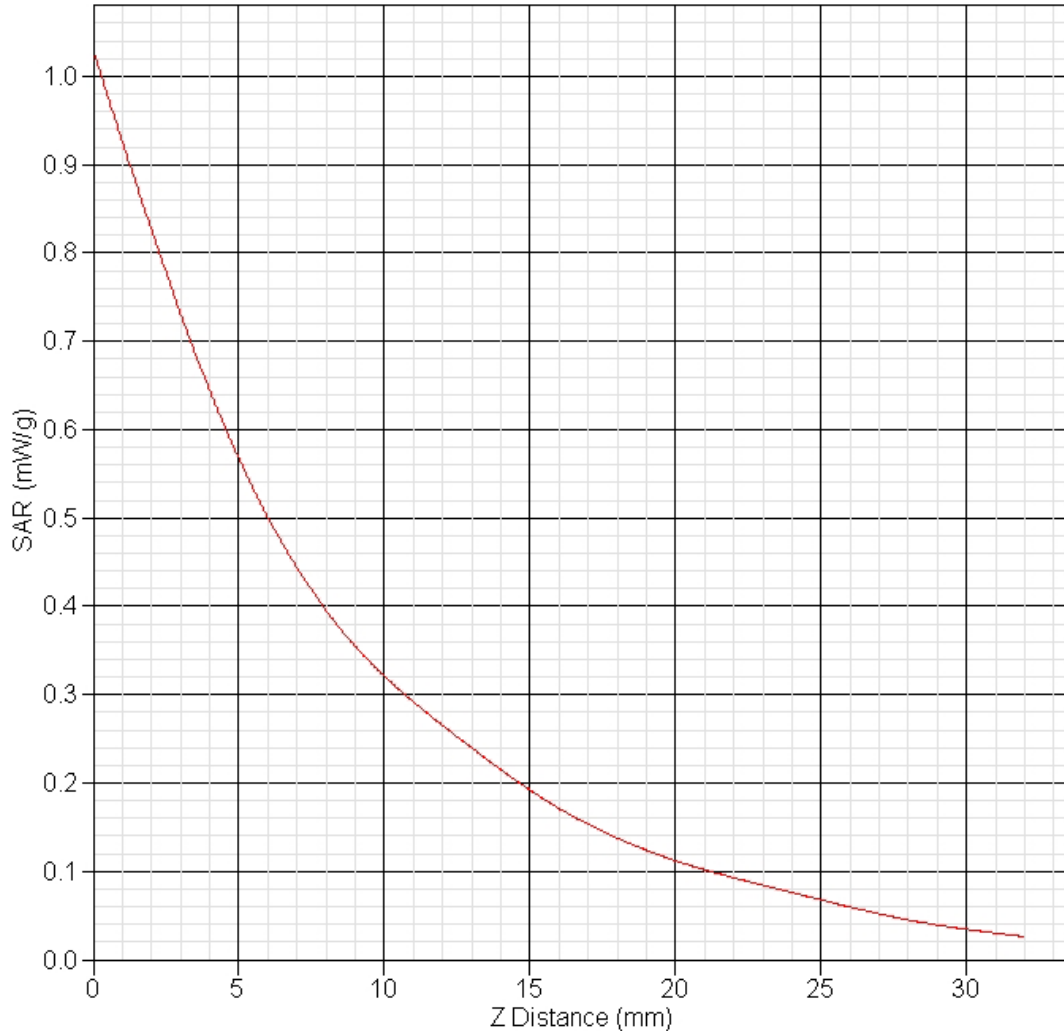
Area Scan Plot



2.11 1900MHz Z-Axis plot

Frequency: 1900MHz, EUT

SAR-Z Axis
at Hotspot x:20.19 y:-0.11



3 EVDO Rev 0_835MHz SAR measurement Data

SAR Test Report

Report Date : 19-Nov-2007
Measurement Date : 19-Nov-2007

Product Data

Device Name : v100
Serial No. : EVDO Rev.0_835-Around-Top
Type : Other
Frequency : 835.00 MHz
Max. Transmit Pwr : 24dBm
Drift Time : 0 min(s)
Length : 290 mm
Width : 20 mm
Depth : 5 mm
Antenna Type : Internal

Phantom Data

Name : APREL-Uni
Type : Uni-Phantom
Size (mm) : 280 x 280 x 200
Location : Center

Tissue Data

Type : BODY
Serial No. : 835_Body
Frequency : 835.00 MHz
Last Calib. Date : 19-Nov-2007
Temperature : 22.30 °C
Ambient Temp. : 22.50 °C
Humidity : 52.00 RH%
Epsilon : 55.98 F/m
Sigma : 0.95 S/m
Density : 1000.00 kg/cu. m

Probe Data

Name : E-field Probe
Model : ALS-E-020
Type : E-Field Triangle
Serial No. : 266
Last Calib. Date : 09-Jul-2007
Frequency : 835.00 MHz
Duty Cycle Factor: 1
Conversion Factor: 6.8
Probe Sensitivity: 1.20 1.20 1.20 $\mu\text{V}/(\text{V}/\text{m})^2$
Compression Point: 95.00 mV
Offset : 1.56 mm

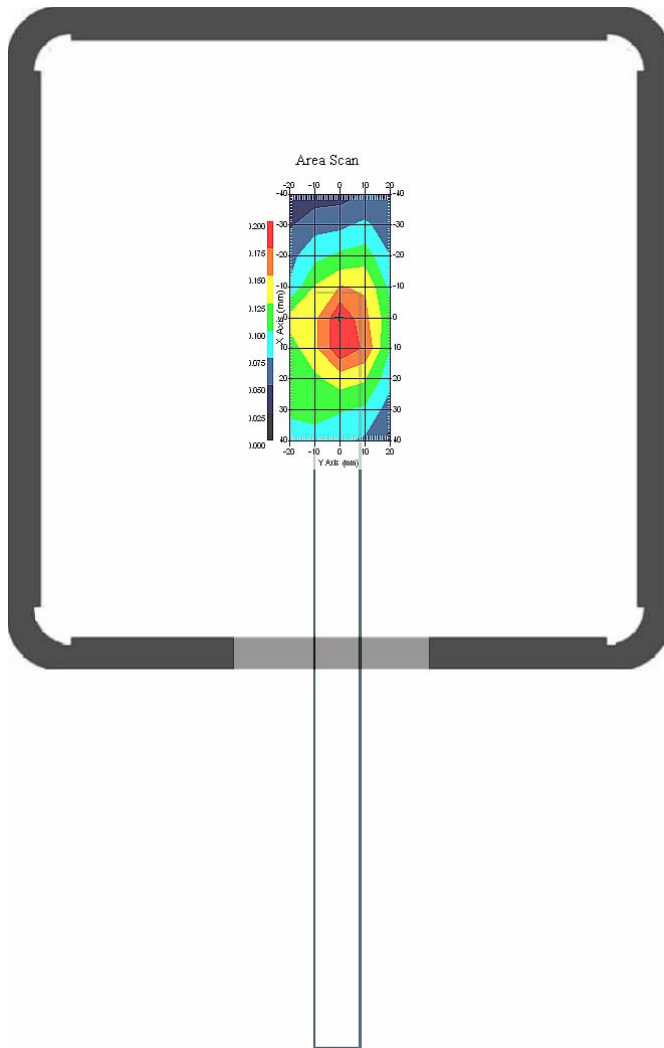
3.1 835 MHz, EUT Position: Mode 2

Measurement Data

Crest Factor : 1
Set-up Date : 19-Nov-2007
Area Scan : 9x5x1 : Measurement x=10mm, y=10mm, z=4mm
Zoom Scan : 5x5x8 : Measurement x=8mm, y=8mm, z=4mm

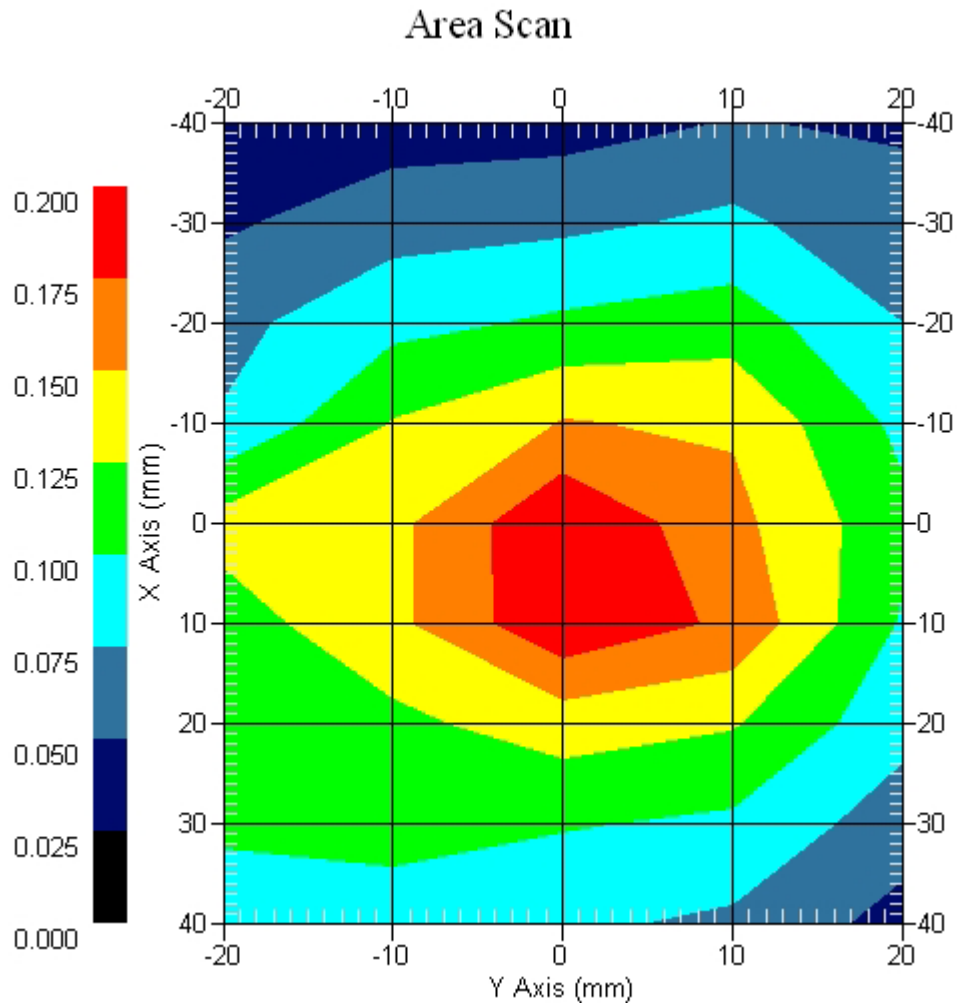
DUT Position : Touch

Power Drift-Start : 0.195 W/kg
Power Drift-Finish: 0.204 W/kg
Power Drift (%) : 4.286



1 gram SAR value : 0.195 W/kg
10 gram SAR value : 0.117 W/kg
Area Scan Peak SAR : 0.198 W/kg
Zoom Scan Peak SAR : 0.330 W/kg

Area Scan Plot



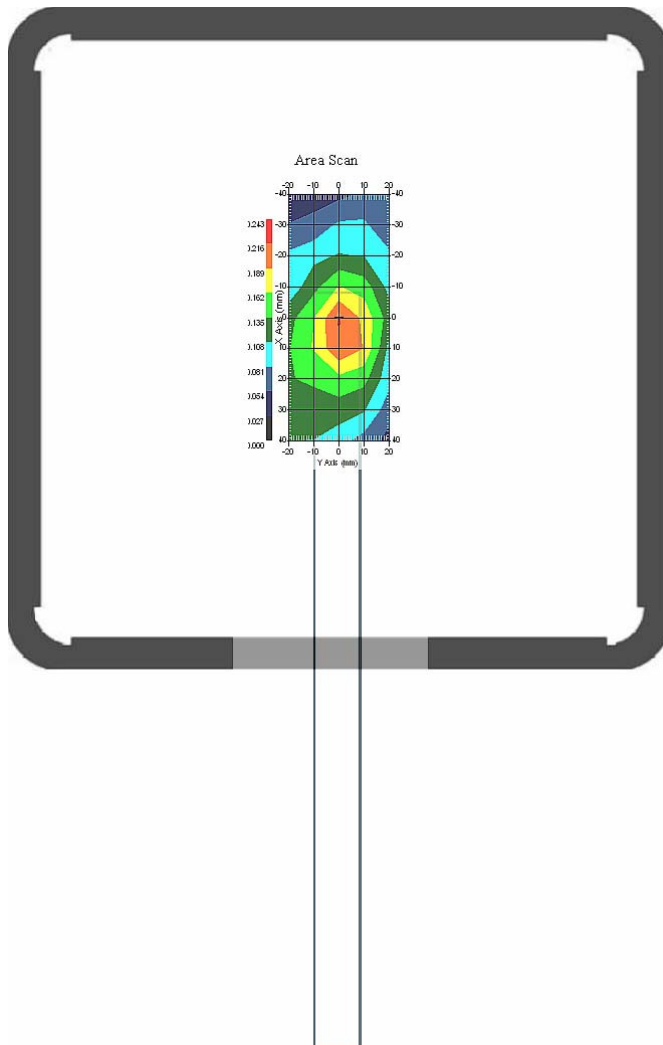
3.2 835 MHz, EUT Position: Mode 2

Measurement Data

Crest Factor : 1
Set-up Date : 19-Nov-2007
Area Scan : 9x5x1 : Measurement x=10mm, y=10mm, z=4mm
Zoom Scan : 5x5x8 : Measurement x=8mm, y=8mm, z=4mm

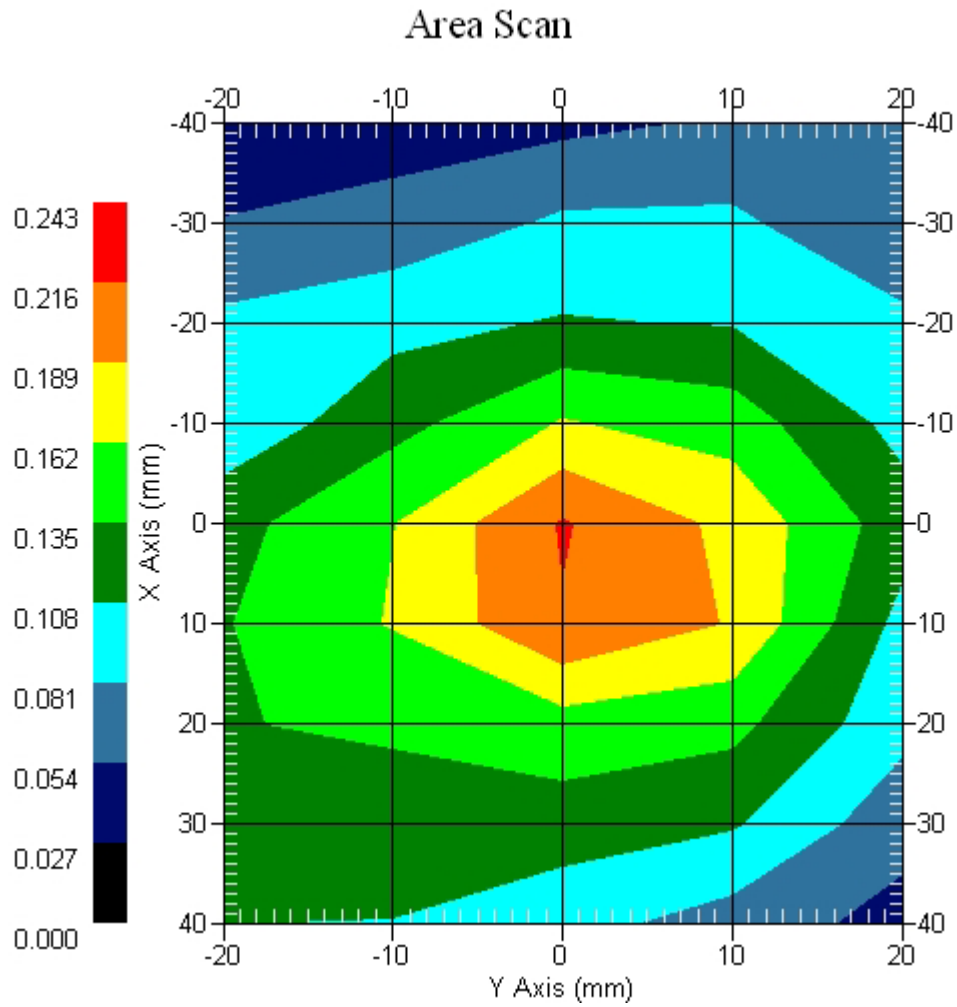
DUT Position : Touch

Power Drift-Start : 0.220 W/kg
Power Drift-Finish: 0.223 W/kg
Power Drift (%) : 1.243



1 gram SAR value : 0.210 W/kg
10 gram SAR value : 0.127 W/kg
Area Scan Peak SAR : 0.218 W/kg
Zoom Scan Peak SAR : 0.360 W/kg

Area Scan Plot



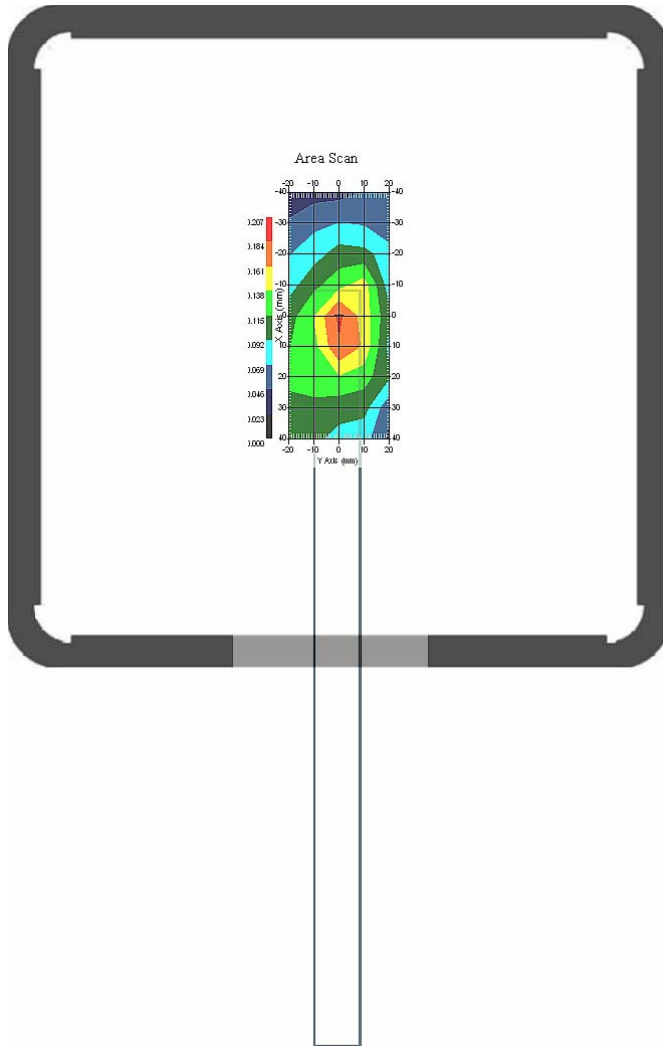
3.3 835 MHz, EUT Position: Mode 2

Measurement Data

Crest Factor : 1
Set-up Date : 19-Nov-2007
Area Scan : 9x5x1 : Measurement x=10mm, y=10mm, z=4mm
Zoom Scan : 5x5x8 : Measurement x=8mm, y=8mm, z=4mm

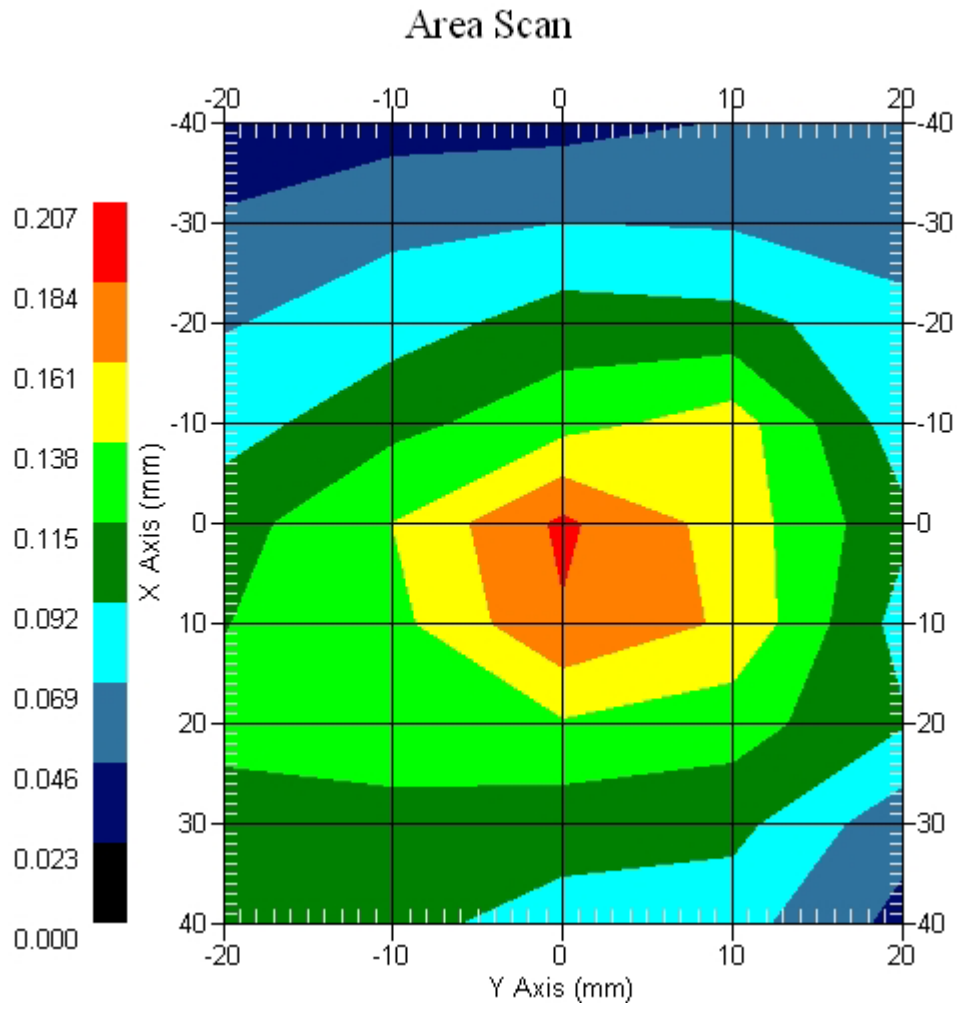
DUT Position : Touch

Power Drift-Start : 0.188 W/kg
Power Drift-Finish: 0.192 W/kg
Power Drift (%) : 2.131



1 gram SAR value : 0.185 W/kg
10 gram SAR value : 0.110 W/kg
Area Scan Peak SAR : 0.188 W/kg
Zoom Scan Peak SAR : 0.310 W/kg

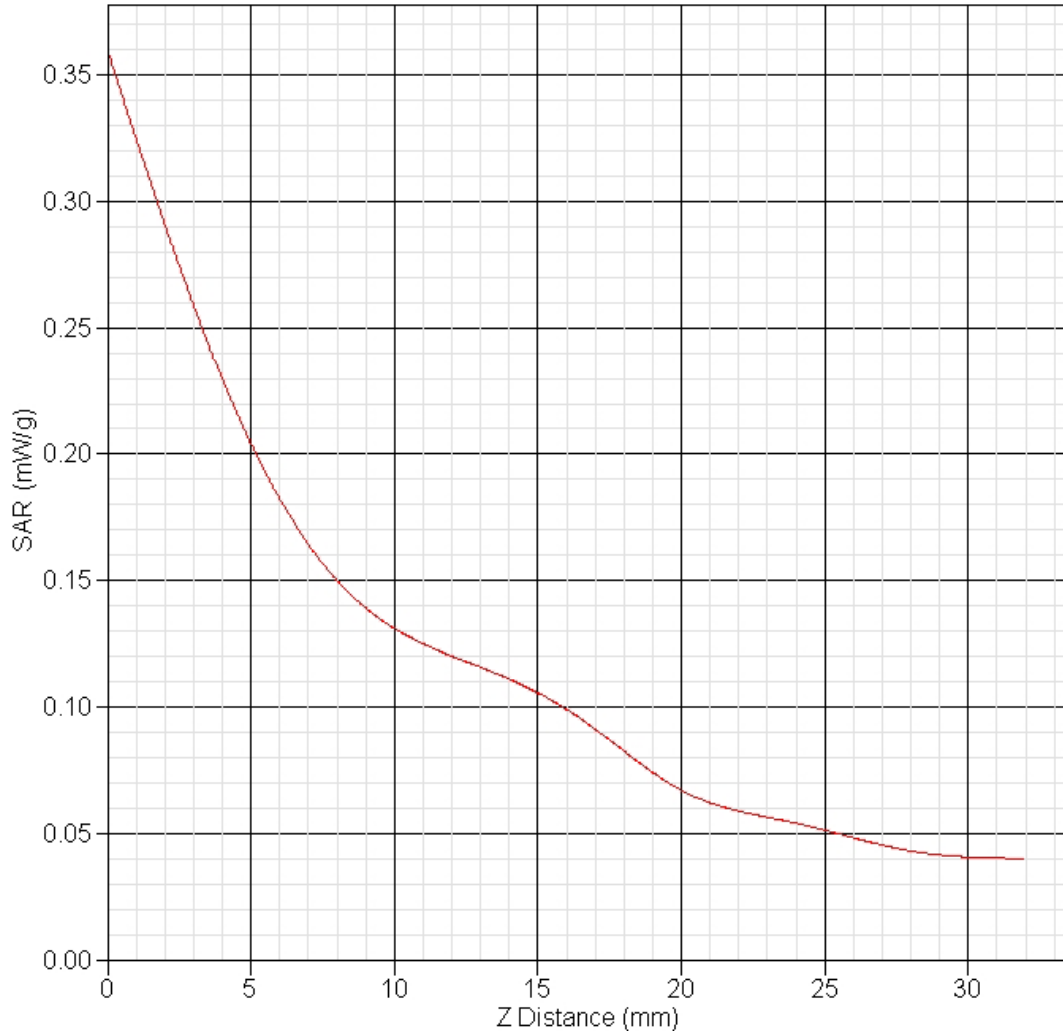
Area Scan Plot



3.4 835MHz Z-Axis plot

Frequency: 835MHz, EUT Around-Top

SAR-Z Axis
at Hotspot x:18.05 y:-0.09





4 EVDO Rev 0_1900 SAR measurement Data

SAR Test Report

Report Date : 19-Nov-2007
Measurement Date : 19-Nov-2007

Product Data
Device Name : v100
Serial No. : EVDO Rev.0_1900-Around-Top
Type : Other
Frequency : 1900.00 MHz
Max. Transmit Pwr : 24dBm
Drift Time : 0 min(s)
Length : 290 mm
Width : 20 mm
Depth : 5 mm
Antenna Type : Internal

Phantom Data
Name : APREL-Uni
Type : Uni-Phantom
Size (mm) : 280 x 280 x 200
Location : Center

Tissue Data
Type : BODY
Serial No. : 1900_Body
Frequency : 1900.00 MHz
Last Calib. Date : 19-Nov-2007
Temperature : 22.40 °C
Ambient Temp. : 22.60 °C
Humidity : 53.00 RH%
Epsilon : 51.16 F/m
Sigma : 1.48 S/m
Density : 1000.00 kg/cu. m

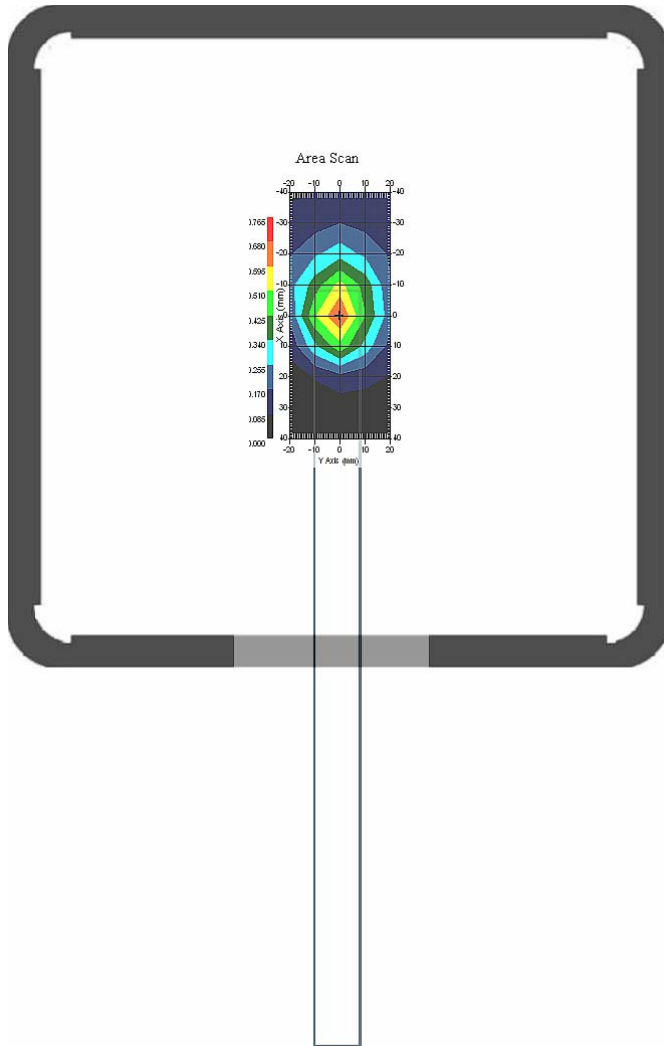
Probe Data
Name : E-field Probe
Model : ALS-E-020
Type : E-Field Triangle
Serial No. : 266
Last Calib. Date : 09-Jul-2007
Frequency : 1900.00 MHz
Duty Cycle Factor: 1
Conversion Factor: 4.9
Probe Sensitivity: 1.20 1.20 1.20 $\mu\text{V}/(\text{V}/\text{m})^2$
Compression Point: 95.00 mV
Offset : 1.56 mm

4.1 1900 MHz, EUT Position: Mode 2

Measurement Data

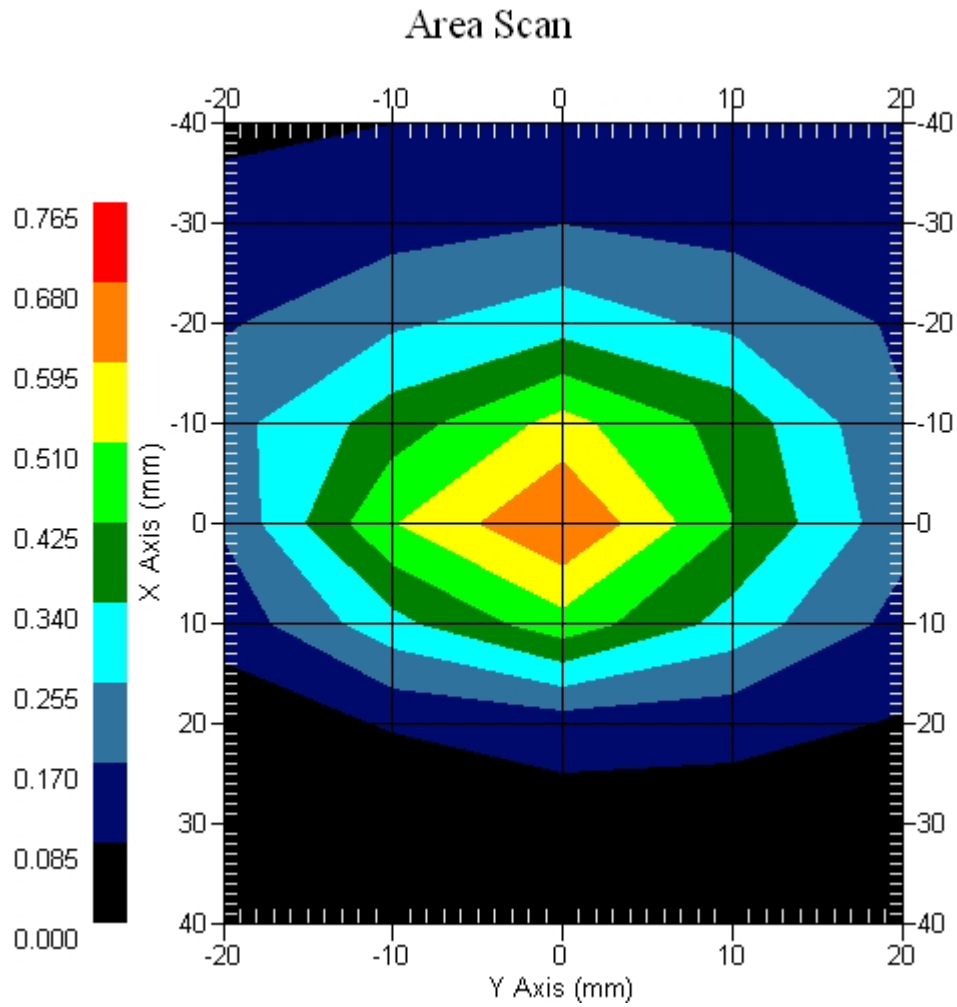
Crest Factor : 1
Set-up Date : 19-Nov-2007
Area Scan : 9x5x1 : Measurement x=10mm, y=10mm, z=4mm
Zoom Scan : 5x5x8 : Measurement x=8mm, y=8mm, z=4mm
DUT Position : Touch
Channel : Low

Power Drift-Start : 0.734 W/kg
Power Drift-Finish: 0.745 W/kg
Power Drift (%) : 1.501



1 gram SAR value : 0.619 W/kg
10 gram SAR value : 0.322 W/kg
Area Scan Peak SAR : 0.681 W/kg
Zoom Scan Peak SAR : 1.100 W/kg

Area Scan Plot

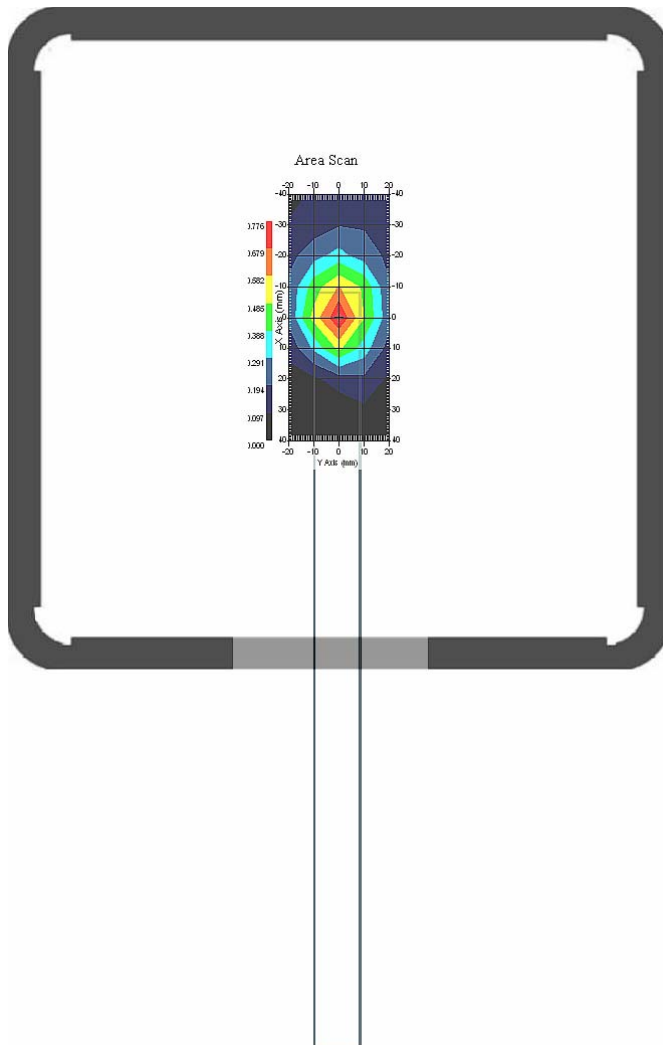


4.2 1900 MHz, EUT Position: Mode 2

Measurement Data

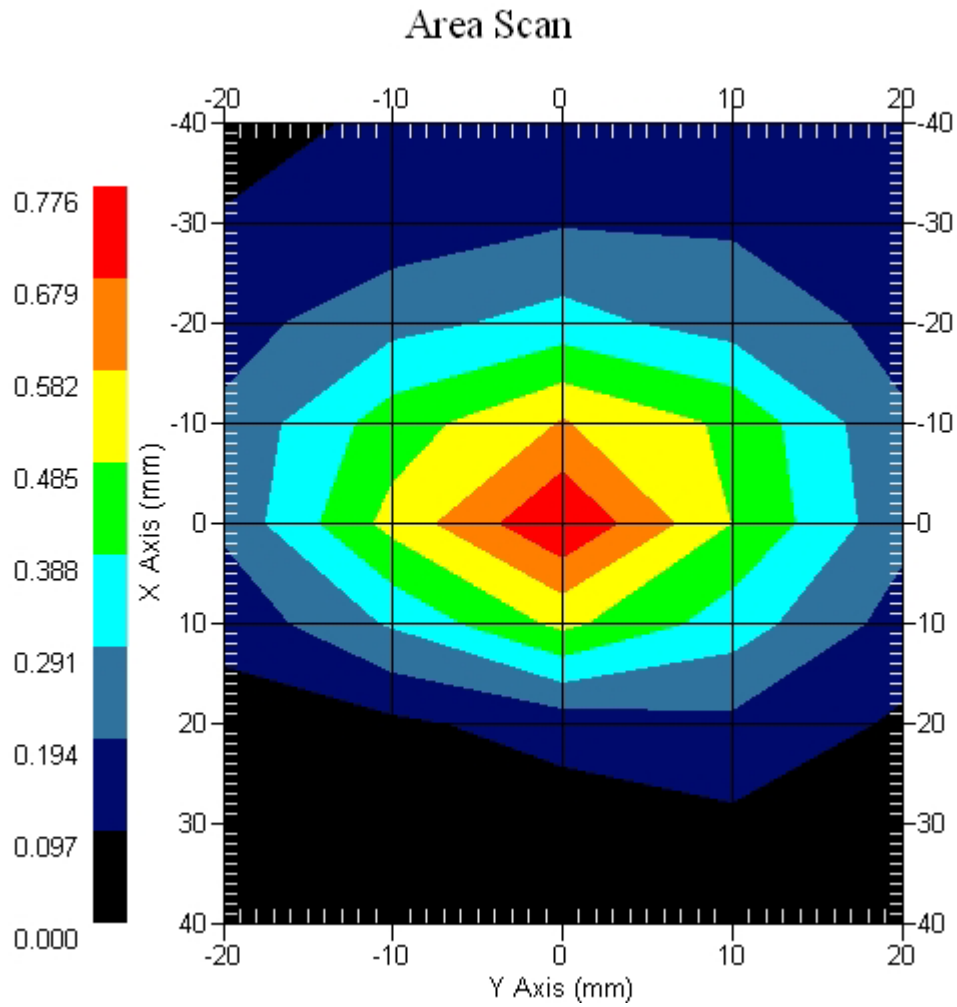
Crest Factor : 1
Set-up Date : 19-Nov-2007
Area Scan : 9x5x1 : Measurement x=10mm, y=10mm, z=4mm
Zoom Scan : 5x5x8 : Measurement x=8mm, y=8mm, z=4mm
DUT Position : Touch
Channel : Mid

Power Drift-Start : 0.767 W/kg
Power Drift-Finish: 0.786 W/kg
Power Drift (%) : 2.501



1 gram SAR value : 0.661 W/kg
10 gram SAR value : 0.343 W/kg
Area Scan Peak SAR : 0.772 W/kg
Zoom Scan Peak SAR : 1.241 W/kg

Area Scan Plot

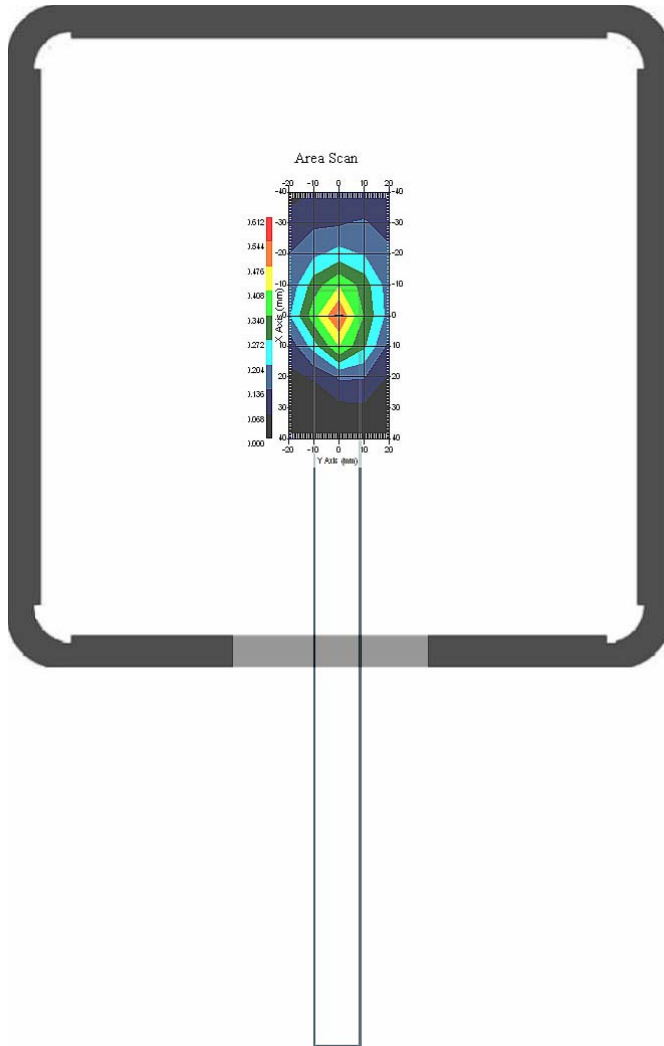


4.3 1900 MHz, EUT Position: Mode 2

Measurement Data

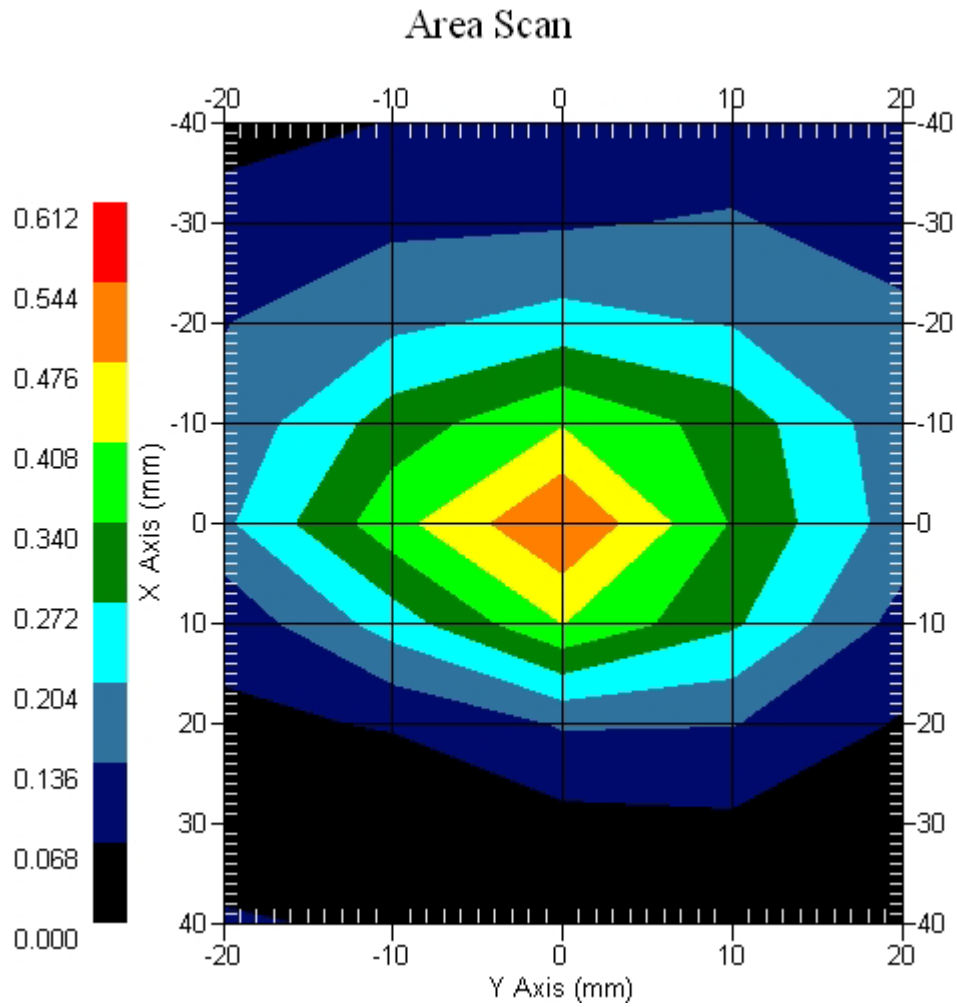
Crest Factor : 1
Set-up Date : 19-Nov-2007
Area Scan : 9x5x1 : Measurement x=10mm, y=10mm, z=4mm
Zoom Scan : 5x5x8 : Measurement x=8mm, y=8mm, z=4mm
DUT Position : Touch
Channel : High

Power Drift-Start : 0.578 W/kg
Power Drift-Finish: 0.567 W/kg
Power Drift (%) : -1.984



1 gram SAR value : 0.488 W/kg
10 gram SAR value : 0.257 W/kg
Area Scan Peak SAR : 0.546 W/kg
Zoom Scan Peak SAR : 0.870 W/kg

Area Scan Plot

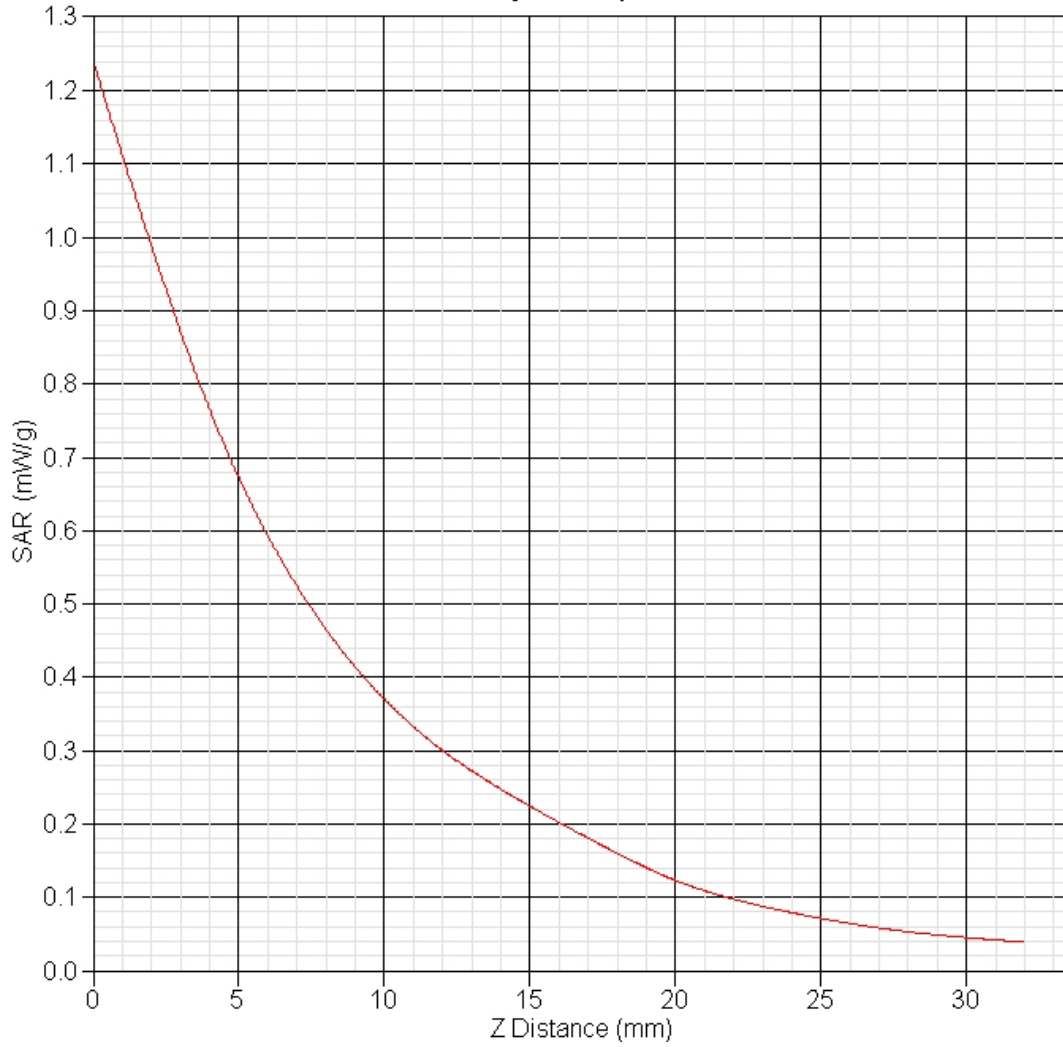


4.4 1900MHz Z-Axis plot

Frequency: 1900MHz, EUT Around-Top

SAR-Z Axis

at Hotspot x:10.19 y:-0.11



5 EVDO Rev A_835MHz SAR measurement Data

SAR Test Report

Report Date : 19-Nov-2007
Measurement Date : 19-Nov-2007

Product Data

Device Name : v100
Serial No. : EVDO Rev.A_835-Around-Top
Type : Other
Frequency : 835.00 MHz
Max. Transmit Pwr : 24dBm
Drift Time : 0 min(s)
Length : 290 mm
Width : 20 mm
Depth : 5 mm
Antenna Type : Internal

Phantom Data

Name : APREL-Uni
Type : Uni-Phantom
Size (mm) : 280 x 280 x 200
Location : Center

Tissue Data

Type : BODY
Serial No. : 835_Body
Frequency : 835.00 MHz
Last Calib. Date : 19-Nov-2007
Temperature : 22.30 °C
Ambient Temp. : 22.50 °C
Humidity : 52.00 RH%
Epsilon : 55.98 F/m
Sigma : 0.95 S/m
Density : 1000.00 kg/cu. m

Probe Data

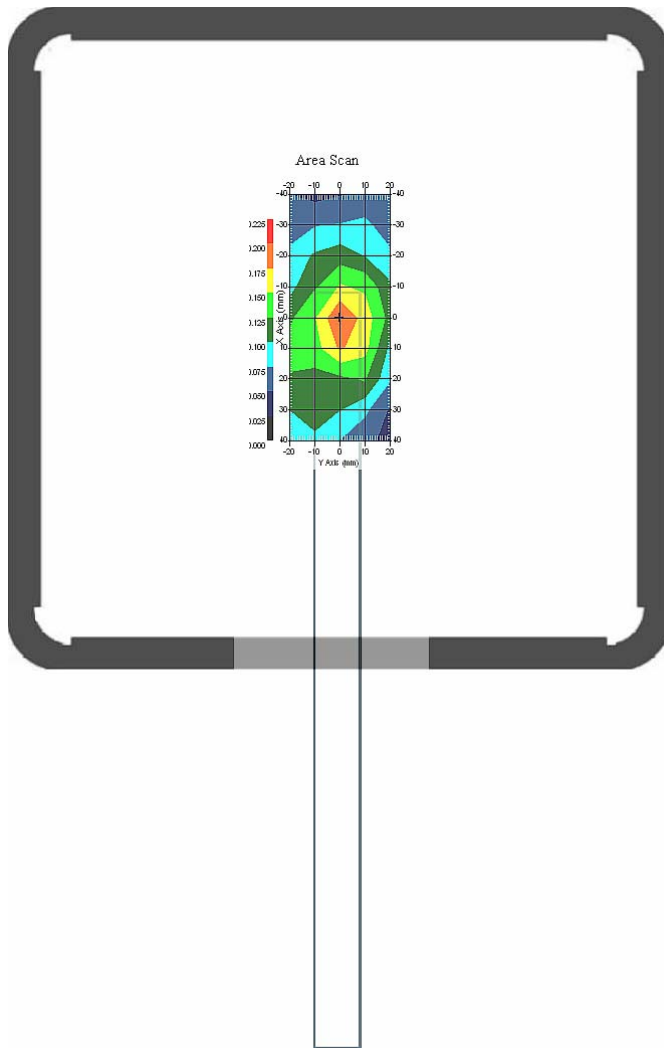
Name : E-field Probe
Model : ALS-E-020
Type : E-Field Triangle
Serial No. : 266
Last Calib. Date : 09-Jul-2007
Frequency : 835.00 MHz
Duty Cycle Factor: 1
Conversion Factor: 6.8
Probe Sensitivity: 1.20 1.20 1.20 $\mu\text{V}/(\text{V}/\text{m})^2$
Compression Point: 95.00 mV
Offset : 1.56 mm

5.1 835 MHz, EUT Position: Mode 2

Measurement Data

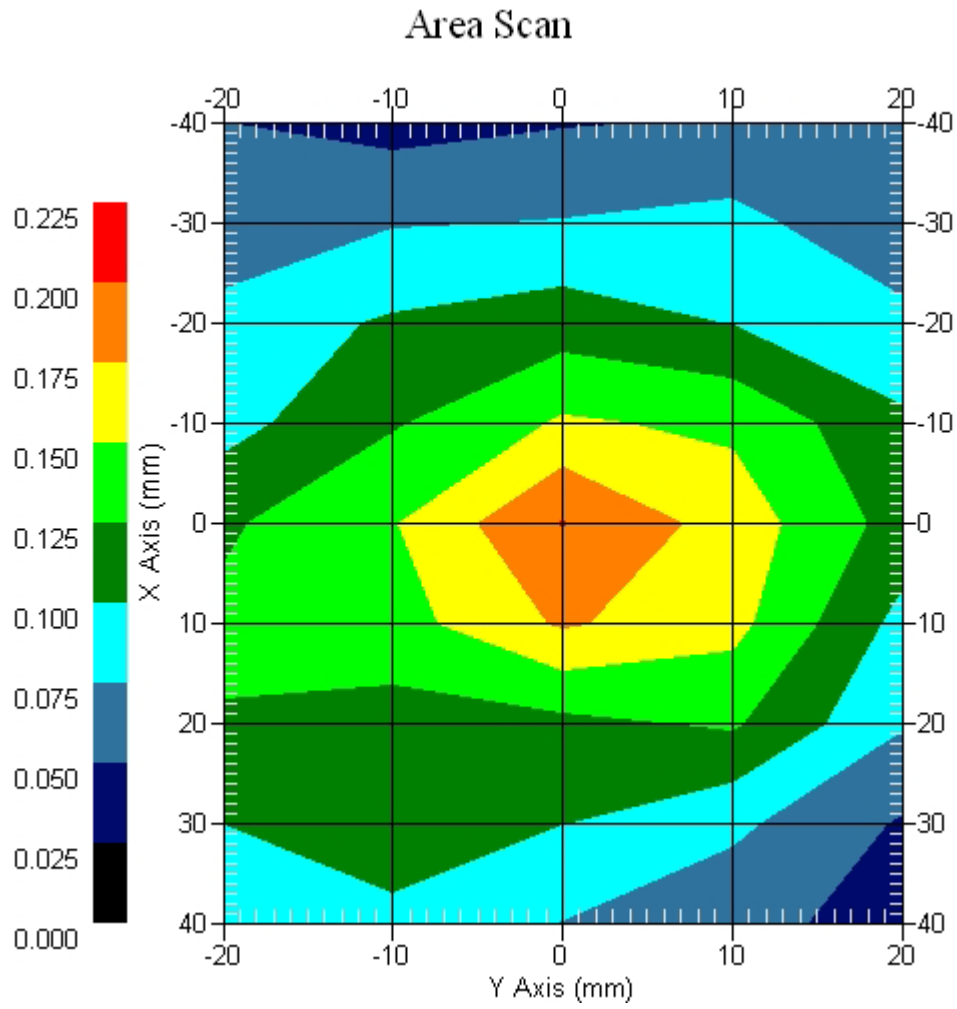
Crest Factor : 1
Set-up Date : 19-Nov-2007
Area Scan : 9x5x1 : Measurement x=10mm, y=10mm, z=4mm
Zoom Scan : 5x5x8 : Measurement x=8mm, y=8mm, z=4mm
DUT Position : Touch
Channel : Low

Power Drift-Start : 0.198 W/kg
Power Drift-Finish: 0.205 W/kg
Power Drift (%) : 3.098



1 gram SAR value : 0.182 W/kg
10 gram SAR value : 0.114 W/kg
Area Scan Peak SAR : 0.201 W/kg
Zoom Scan Peak SAR : 0.310 W/kg

Area Scan Plot

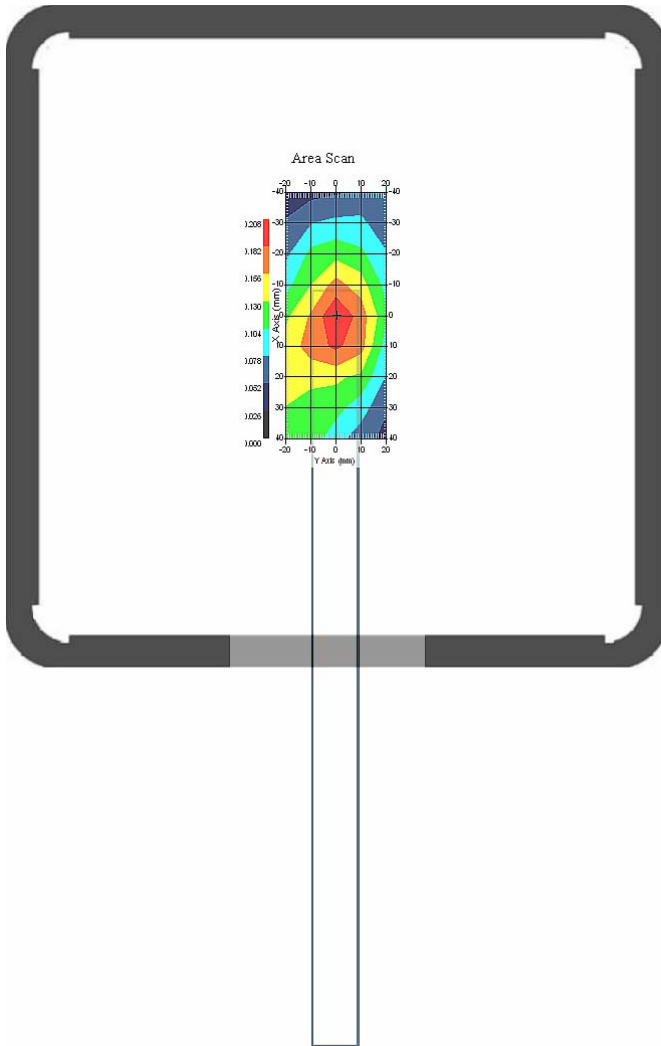


5.2 835 MHz, EUT Position: Mode 2

Measurement Data

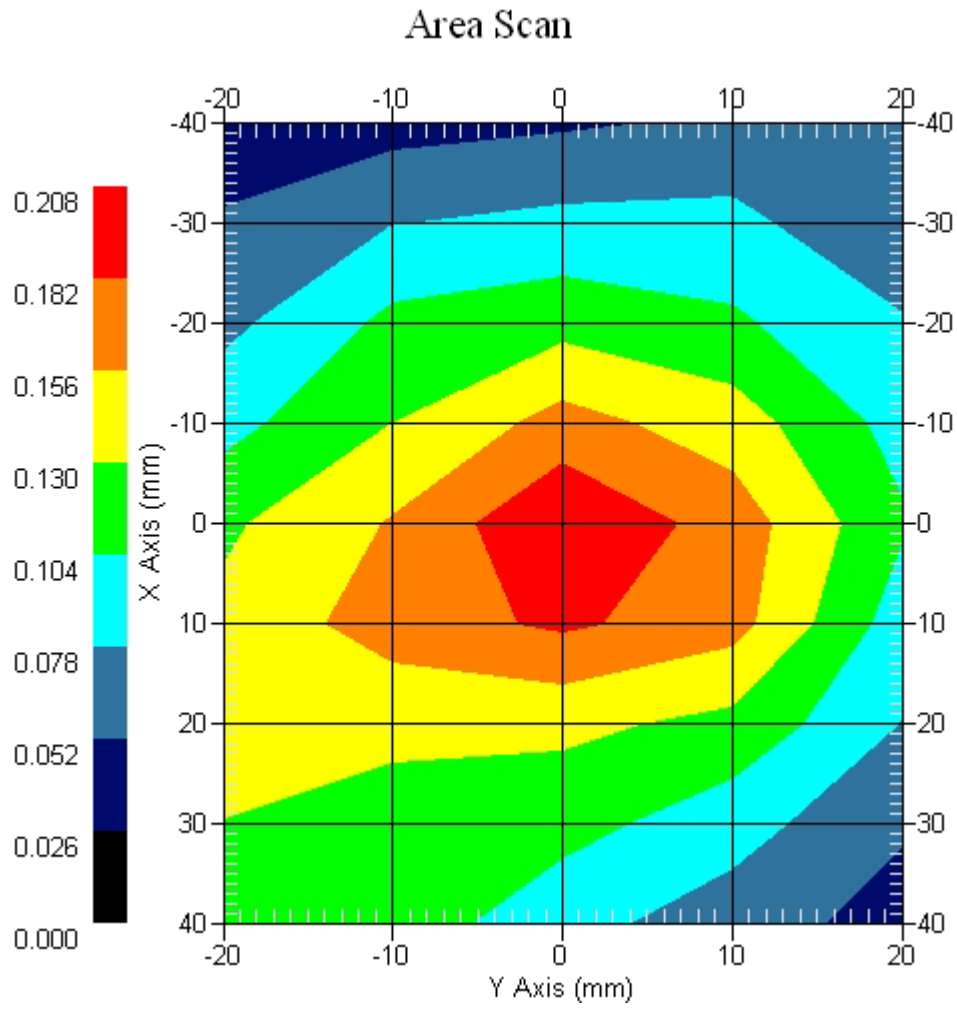
Crest Factor : 1
Set-up Date : 19-Nov-2007
Area Scan : 9x5x1 : Measurement x=10mm, y=10mm, z=4mm
Zoom Scan : 5x5x8 : Measurement x=8mm, y=8mm, z=4mm
DUT Position : Touch
Channel : Mid

Power Drift-Start : 0.229 W/kg
Power Drift-Finish: 0.237 W/kg
Power Drift (%) : 3.498



1 gram SAR value : 0.189 W/kg
10 gram SAR value : 0.107 W/kg
Area Scan Peak SAR : 0.207 W/kg
Zoom Scan Peak SAR : 0.310 W/kg

Area Scan Plot

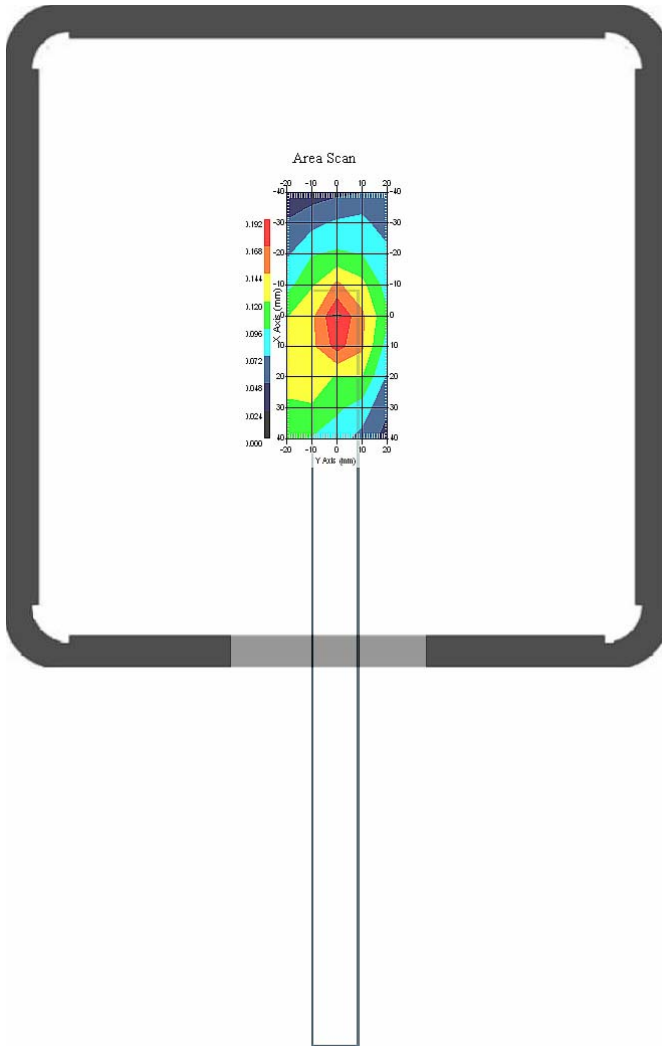


5.3 835 MHz, EUT Position: Mode 2

Measurement Data

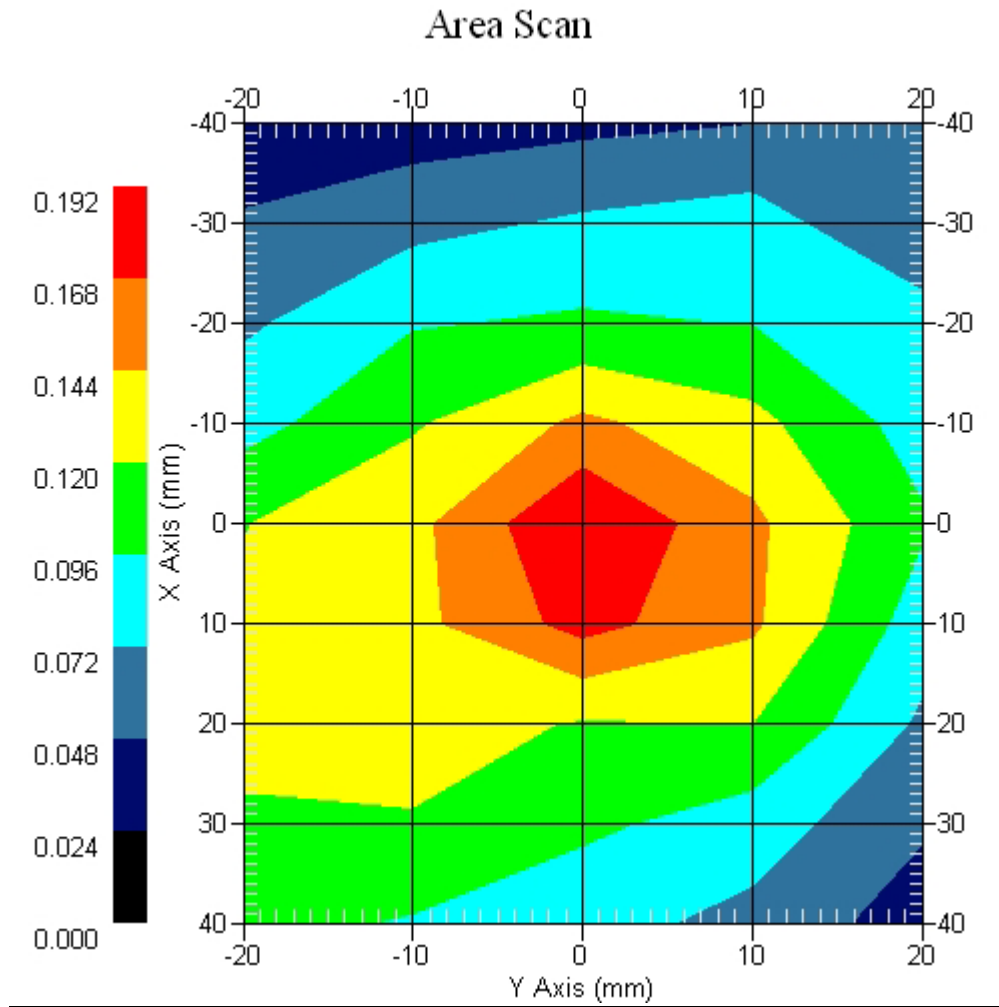
Crest Factor : 1
Set-up Date : 19-Nov-2007
Area Scan : 9x5x1 : Measurement x=10mm, y=10mm, z=4mm
Zoom Scan : 5x5x8 : Measurement x=8mm, y=8mm, z=4mm
DUT Position : Touch
Channel : High

Power Drift-Start : 0.199 W/kg
Power Drift-Finish: 0.208 W/kg
Power Drift (%) : 4.564



1 gram SAR value : 0.177 W/kg
10 gram SAR value : 0.106 W/kg
Area Scan Peak SAR : 0.192 W/kg
Zoom Scan Peak SAR : 0.300 W/kg

Area Scan Plot

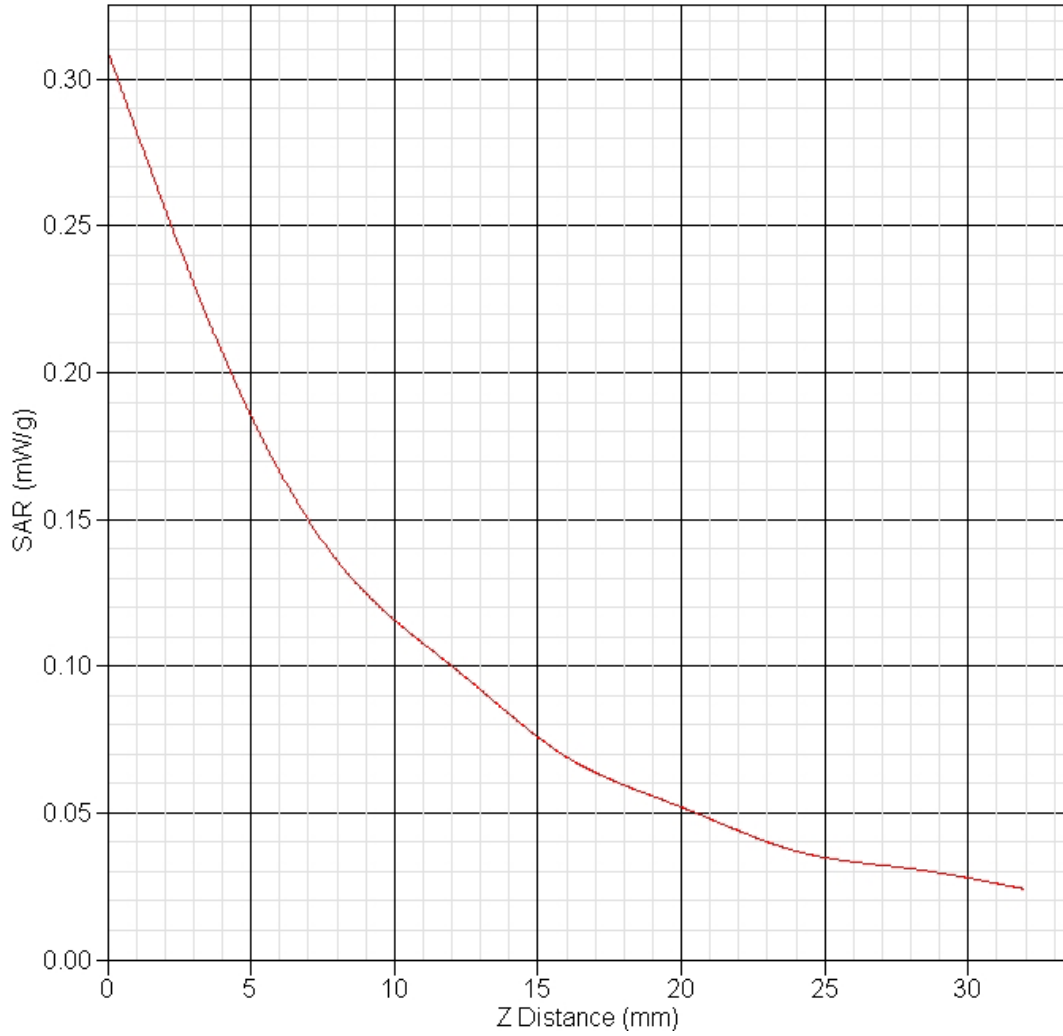


5.4 835MHz Z-Axis plot

Frequency: 835MHz, EUT Around-Top

SAR-Z Axis

at Hotspot x:10.14 y:-0.12





6 EVDO Rev A_1900MHz SAR measurement Data

SAR Test Report

Report Date : 19-Nov-2007
Measurement Date : 19-Nov-2007

Product Data
Device Name : v100
Serial No. : EVDO Rev.A_1900-Around-Top
Type : Other
Frequency : 1900.00 MHz
Max. Transmit Pwr : 24dBm
Drift Time : 0 min(s)
Length : 290 mm
Width : 20 mm
Depth : 5 mm
Antenna Type : Internal

Phantom Data
Name : APREL-Uni
Type : Uni-Phantom
Size (mm) : 280 x 280 x 200
Location : Center

Tissue Data
Type : BODY
Serial No. : 1900_Body
Frequency : 1900.00 MHz
Last Calib. Date : 19-Nov-2007
Temperature : 22.40 °C
Ambient Temp. : 22.60 °C
Humidity : 53.00 RH%
Epsilon : 51.16 F/m
Sigma : 1.48 S/m
Density : 1000.00 kg/cu. m

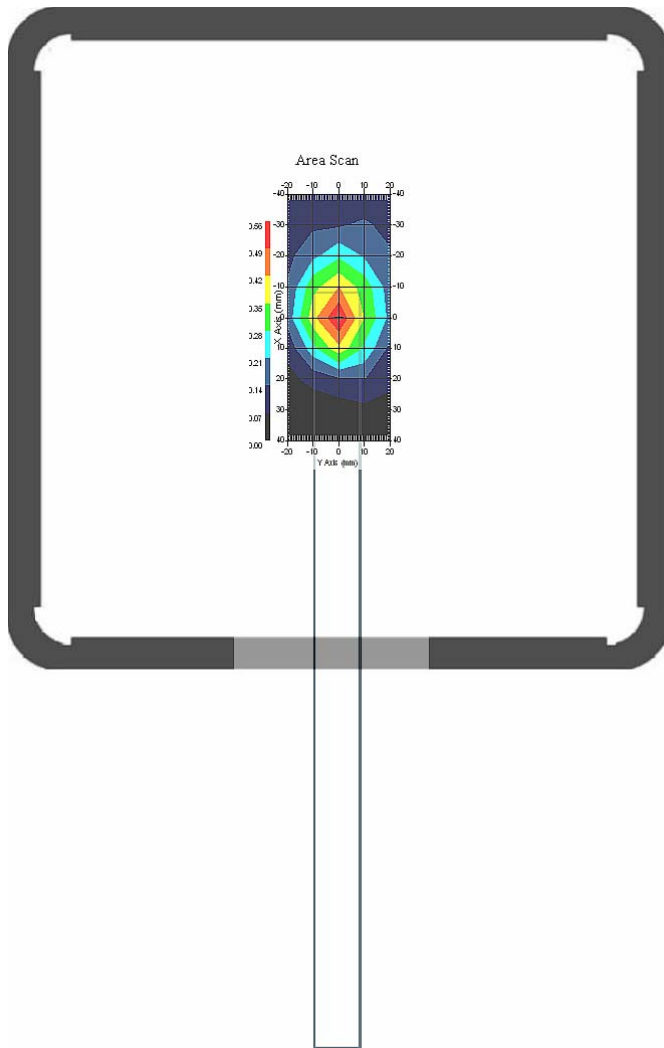
Probe Data
Name : E-field Probe
Model : ALS-E-020
Type : E-Field Triangle
Serial No. : 266
Last Calib. Date : 09-Jul-2007
Frequency : 1900.00 MHz
Duty Cycle Factor: 1
Conversion Factor: 4.9
Probe Sensitivity: 1.20 1.20 1.20 $\mu\text{V}/(\text{V}/\text{m})^2$
Compression Point: 95.00 mV
Offset : 1.56 mm

6.1 1900 MHz, EUT Position: Mode 2

Measurement Data

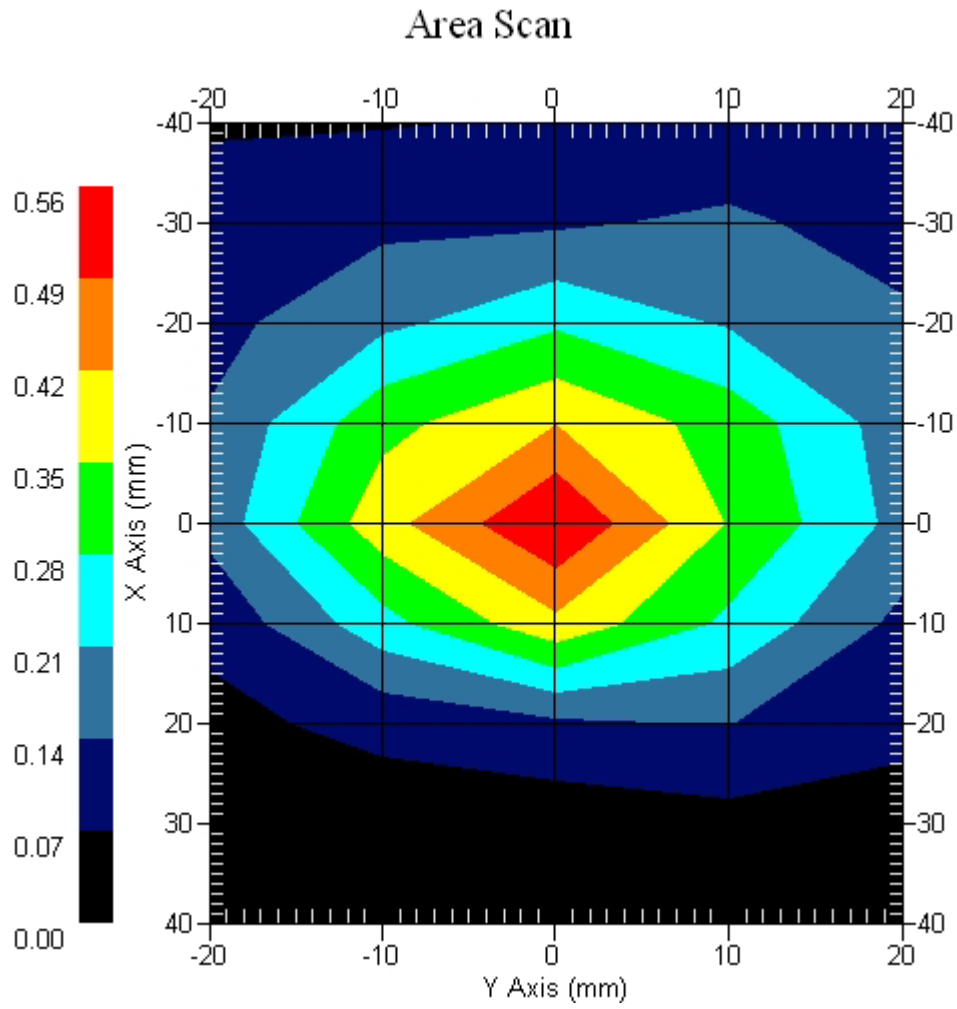
Crest Factor : 1
Set-up Date : 19-Nov-2007
Area Scan : 9x5x1 : Measurement x=10mm, y=10mm, z=4mm
Zoom Scan : 5x5x8 : Measurement x=8mm, y=8mm, z=4mm
DUT Position : Touch
Channel : Low

Power Drift-Start : 0.563 W/kg
Power Drift-Finish: 0.557 W/kg
Power Drift (%) : -0.984



1 gram SAR value : 0.490 W/kg
10 gram SAR value : 0.259 W/kg
Area Scan Peak SAR : 0.560 W/kg
Zoom Scan Peak SAR : 0.880 W/kg

Area Scan Plot

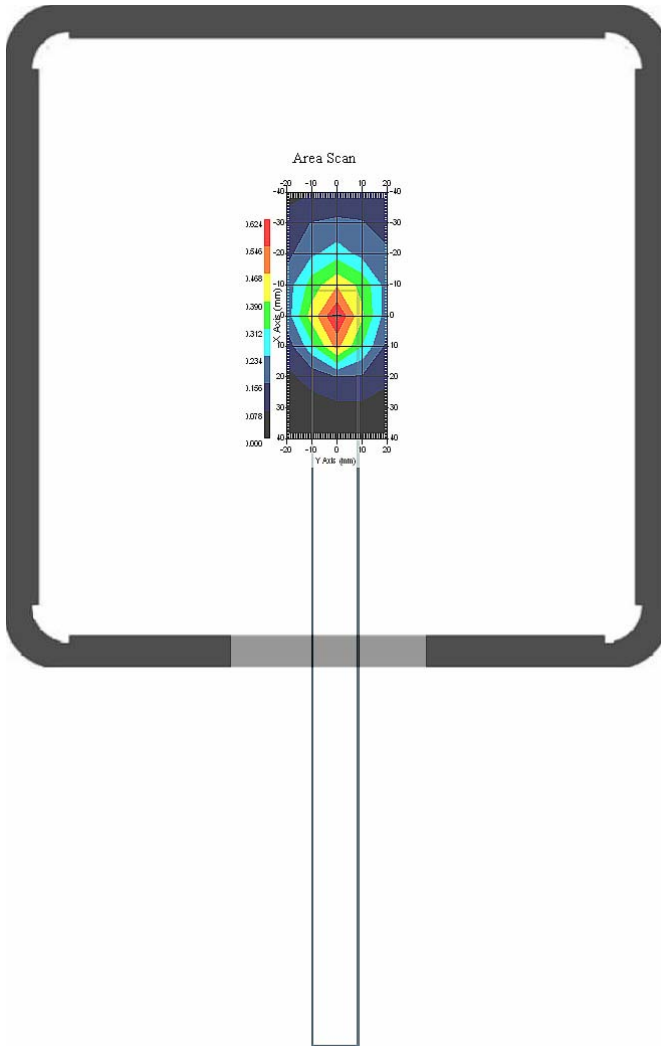


6.2 1900 MHz, EUT Position: Mode 2

Measurement Data

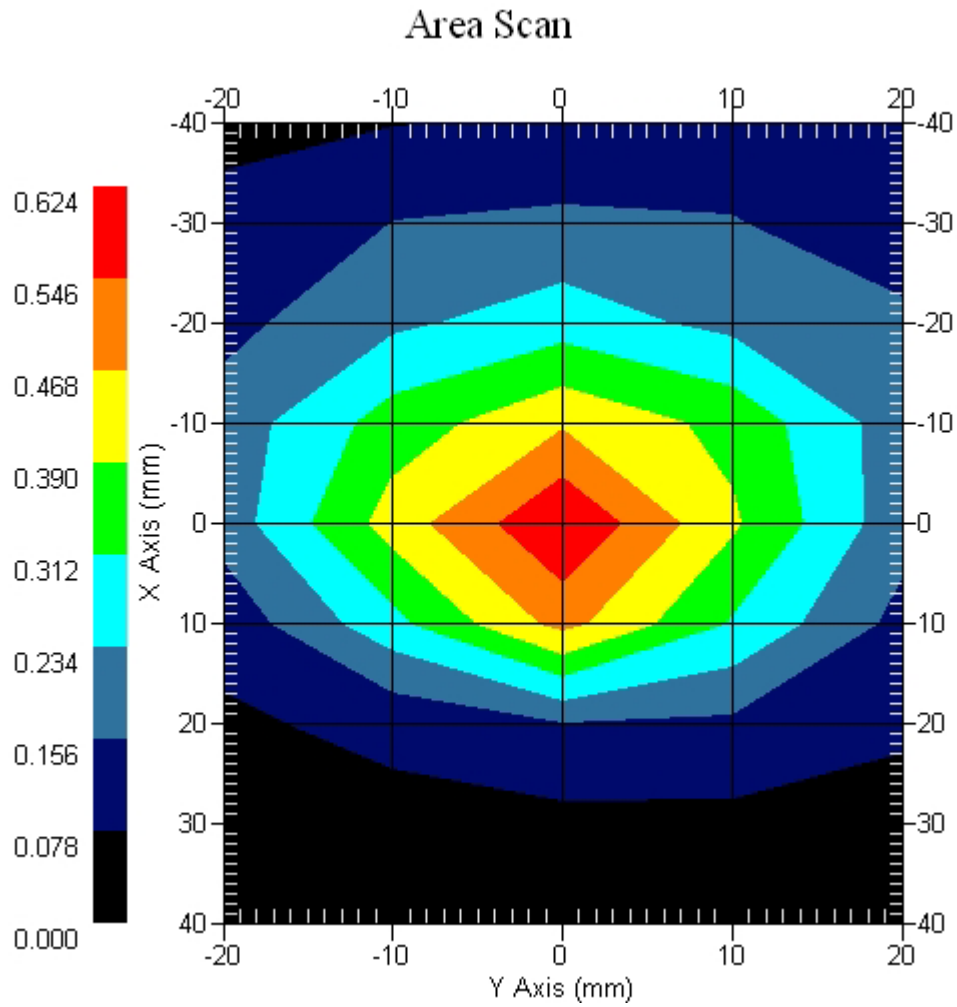
Crest Factor : 1
Set-up Date : 19-Nov-2007
Area Scan : 9x5x1 : Measurement x=10mm, y=10mm, z=4mm
Zoom Scan : 5x5x8 : Measurement x=8mm, y=8mm, z=4mm
DUT Position : Touch
Channel : Mid

Power Drift-Start : 0.625 W/kg
Power Drift-Finish: 0.639 W/kg
Power Drift (%) : 2.267



1 gram SAR value : 0.548 W/kg
10 gram SAR value : 0.290 W/kg
Area Scan Peak SAR : 0.621 W/kg
Zoom Scan Peak SAR : 0.960 W/kg

Area Scan Plot

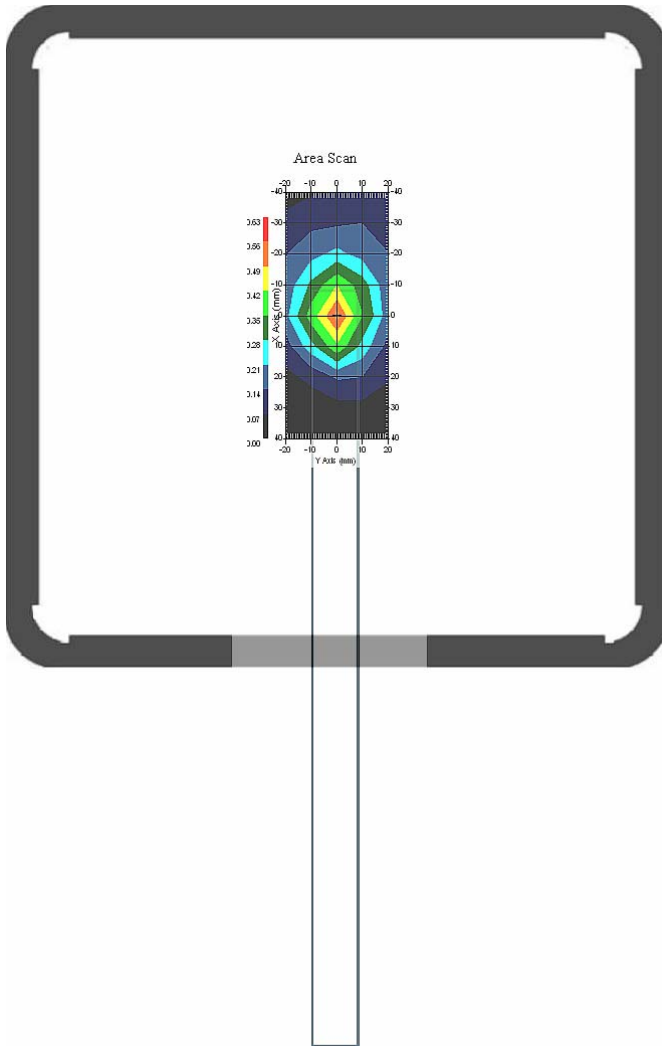


6.3 1900 MHz, EUT Position: Mode 2

Measurement Data

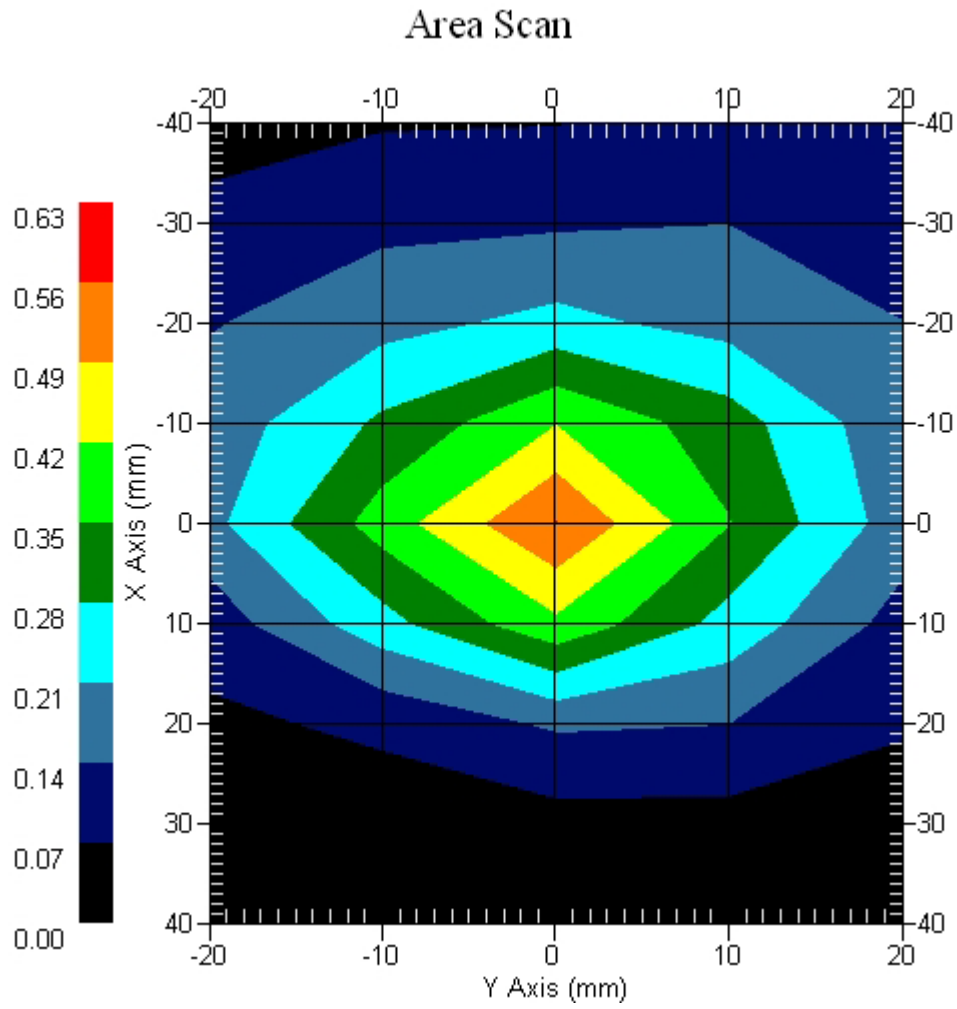
Crest Factor : 1
Set-up Date : 19-Nov-2007
Area Scan : 9x5x1 : Measurement x=10mm, y=10mm, z=4mm
Zoom Scan : 5x5x8 : Measurement x=8mm, y=8mm, z=4mm
DUT Position : Touch
Channel : High

Power Drift-Start : 0.575 W/kg
Power Drift-Finish: 0.573 W/kg
Power Drift (%) : -0.248



1 gram SAR value : 0.501 W/kg
10 gram SAR value : 0.261 W/kg
Area Scan Peak SAR : 0.562 W/kg
Zoom Scan Peak SAR : 0.920 W/kg

Area Scan Plot



6.4 1900MHz Z-Axis plot

Frequency: 1900MHz, EUT Around-Top

SAR-Z Axis

at Hotspot x:10.14 y:-0.12

