

Appendix C

SAR System Validation Data

of

Product Name

Notebook Personal Computer

Model

V100

(with SIERRA EVDO Module, Model:MC5725V)

Brand: GETAC

1 835 MHz System Validation Data

Report Date : 19-Nov-2007
Measurement Date : 19-Nov-2007

Product Data

Device Name : Dipole-835
Serial No. : Validation
Type : Dipole
Model : Standard
Frequency : 835.00 MHz
Max. Transmit Pwr : 1 W
Drift Time : 0 min(s)
Length : 161 mm
Width : 3.6 mm
Depth : 89.8 mm
Antenna Type : Internal
Power Drift-Start : 10.371 W/kg
Power Drift-Finish : 10.225 W/kg
Power Drift (%) : -1.404

Phantom Data

Name : APREL-Uni
Type : Uni-Phantom
Size (mm) : 280 x 280 x 200
Location : Center

Tissue Data

Type : HEAD
Serial No. : 835HEAD
Frequency : 835.00 MHz
Last Calib. Date : 19-Nov-2007
Temperature : 22.30 °C
Ambient Temp. : 22.50 °C
Humidity : 52.00 RH%
Epsilon : 42.78 F/m
Sigma : 0.92 S/m
Density : 1000.00 kg/cu. m

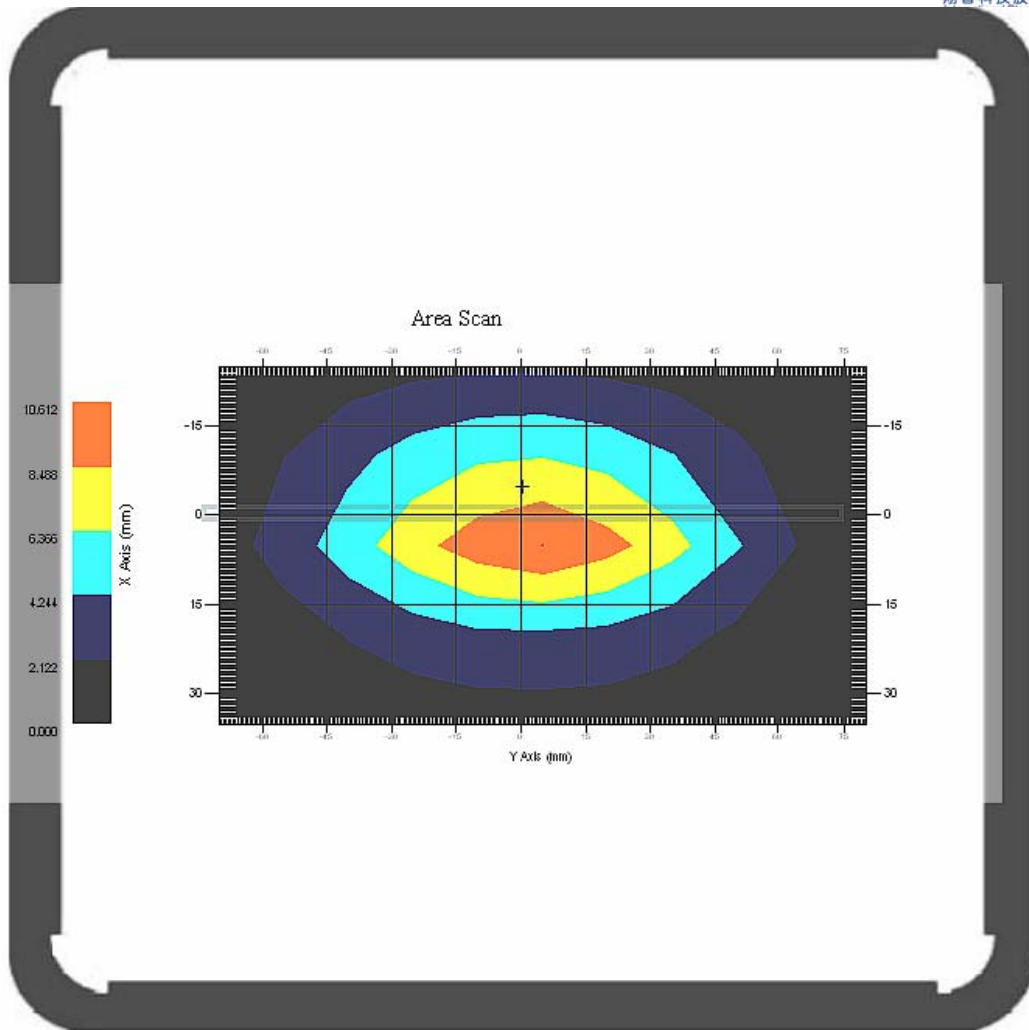
Probe Data

Name : E-field Probe
Model : ALS-E-020
Type : E-Field Triangle
Serial No. : 266
Last Calib. Date : 09-Jul-2007
Frequency : 835.00 MHz
Duty Cycle Factor : 1
Conversion Factor : 6.6
Probe Sensitivity : 1.20 1.20 1.20 $\mu\text{V}/(\text{V}/\text{m})^2$
Compression Point : 95.00 mV
Offset : 1.56 mm

Measurement Data

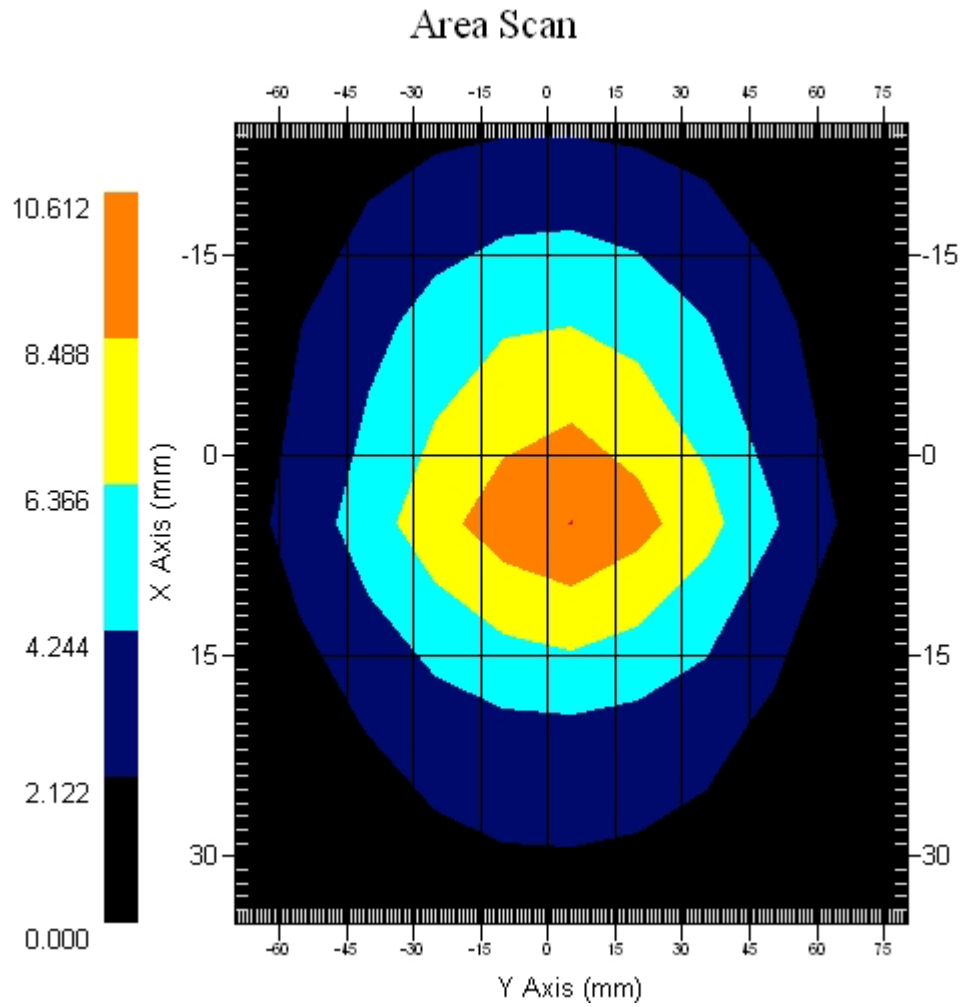
Crest Factor : 1
Tissue Temp. : 22.30 °C
Ambient Temp. : 22.50 °C
Set-up Date : 19-Nov-2007
Area Scan : 5x11x1 : Measurement x=15mm, y=15mm, z=4mm
Zoom Scan : 5x5x8 : Measurement x=8mm, y=8mm, z=4mm

Channel : Mid

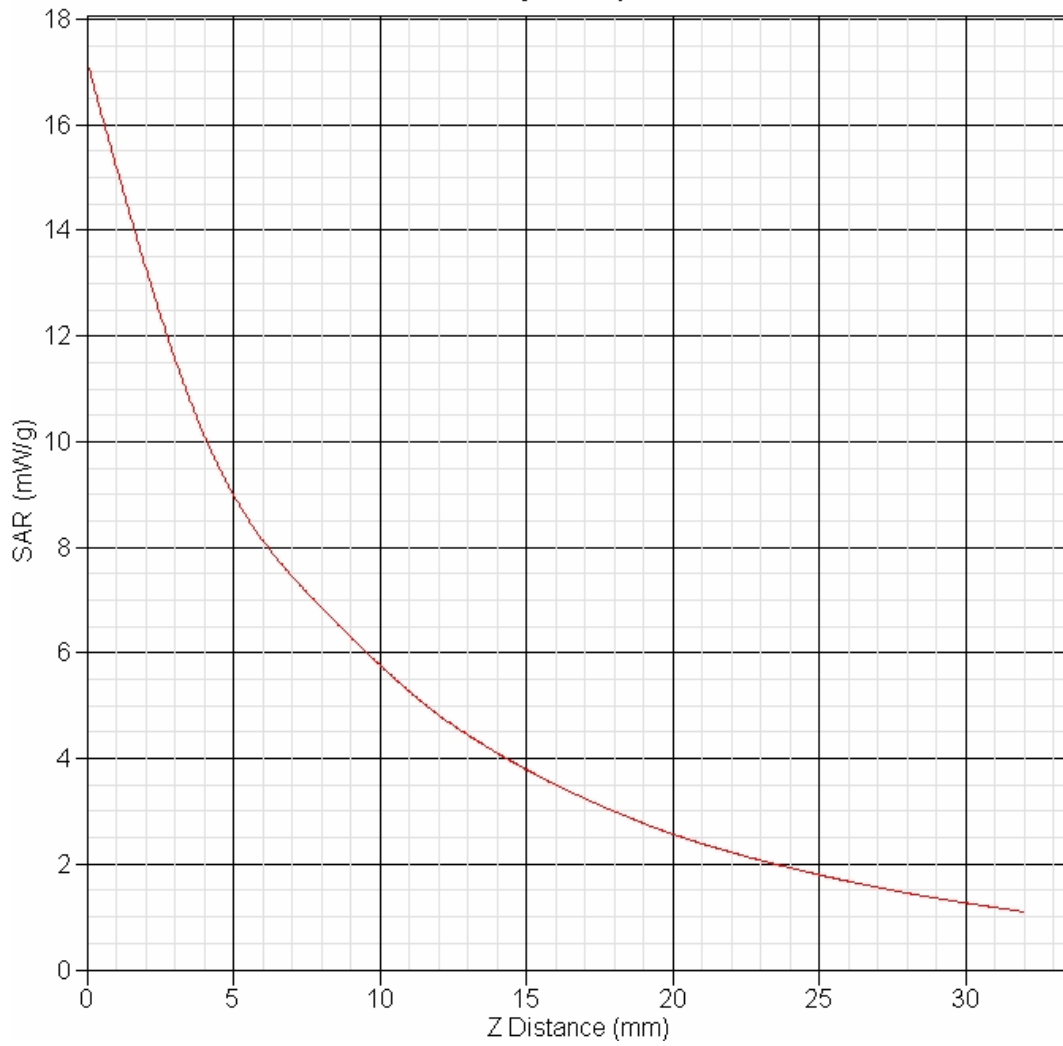


1 gram SAR value : 9.615 W/kg
10 gram SAR value : 6.178 W/kg
Area Scan Peak SAR : 10.612 W/kg
Zoom Scan Peak SAR : 17.215 W/kg

Area Scan Plot



SAR-Z Axis
at Hotspot x:0.00 y:0.00



2 1900 MHz System Validation Data

Report Date : 19-Nov-2007
Measurement Date : 19-Nov-2007

Product Data

Device Name : Dipole-1900
Serial No. : Validation
Type : Dipole
Model : Standard
Frequency : 1900.00 MHz
Max. Transmit Pwr : 1 W
Drift Time : 0 min(s)
Length : 68 mm
Width : 3.6 mm
Depth : 39.5 mm
Antenna Type : Internal
Power Drift-Start : 45.471 W/kg
Power Drift-Finish : 44.438 W/kg
Power Drift (%) : -2.272

Phantom Data

Name : APREL-Uni
Type : Uni-Phantom
Size (mm) : 280 x 280 x 200
Location : Center

Tissue Data

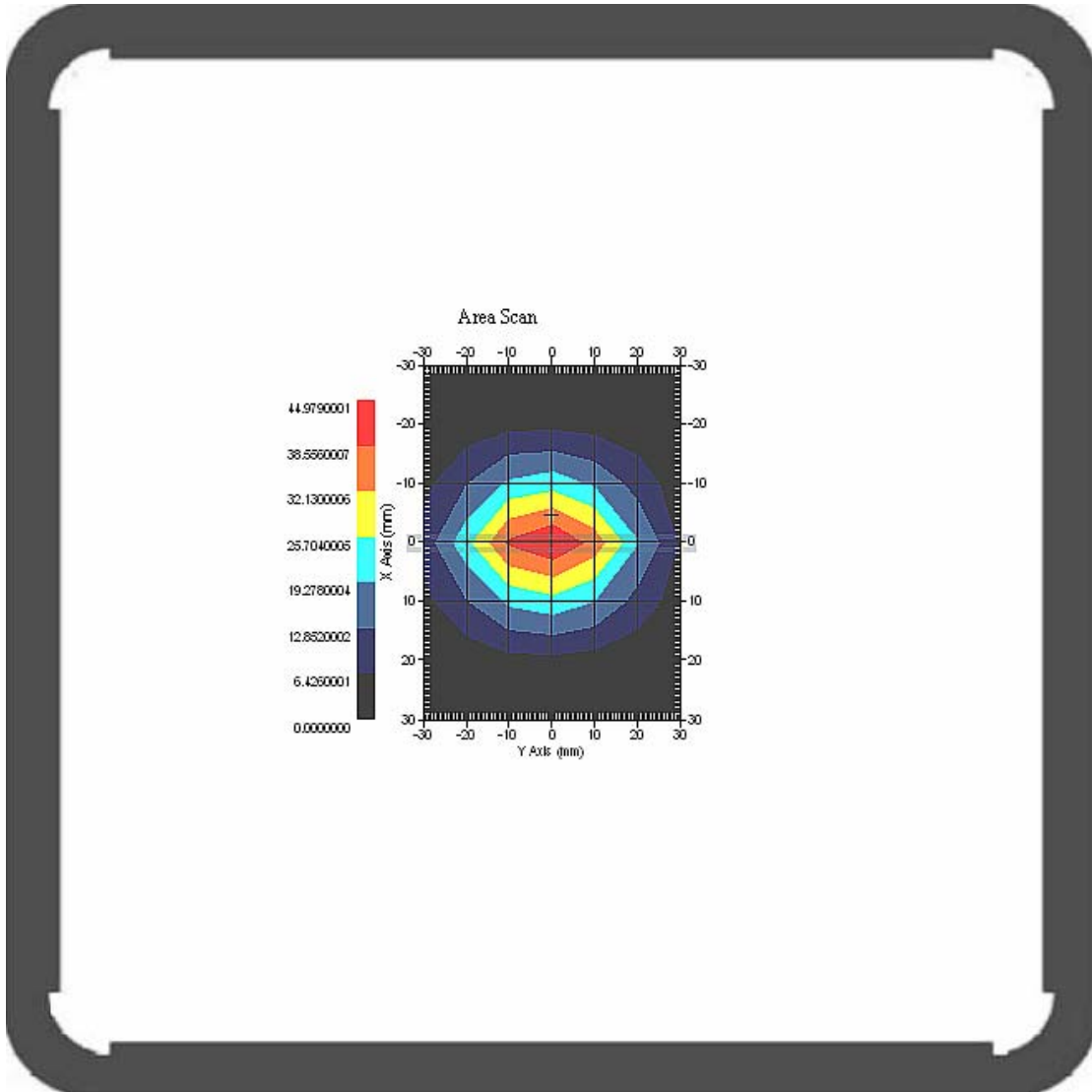
Type : HEAD
Serial No. : 1900HEAD
Frequency : 1900.00 MHz
Last Calib. Date : 19-Nov-2007
Temperature : 22.40 °C
Ambient Temp. : 22.60 °C
Humidity : 53.00 RH%
Epsilon : 40.57 F/m
Sigma : 1.42 S/m
Density : 1000.00 kg/cu. m

Probe Data

Name : E-field Probe
Model : ALS-E-020
Type : E-Field Triangle
Serial No. : 266
Last Calib. Date : 09-Jul-2007
Frequency : 1900.00 MHz
Duty Cycle Factor : 1
Conversion Factor : 5.5
Probe Sensitivity : 1.20 1.20 1.20 $\mu\text{V}/(\text{V}/\text{m})^2$
Compression Point : 95.00 mV
Offset : 1.56 mm

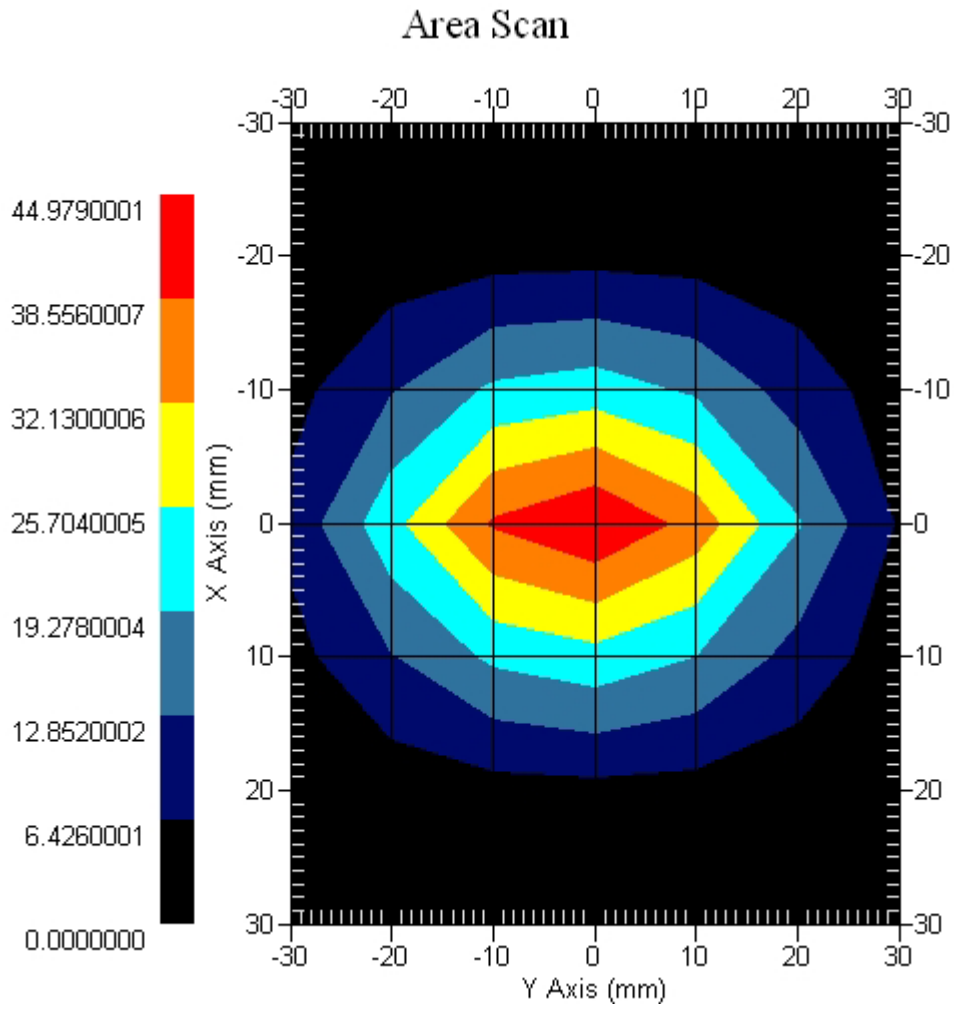
Measurement Data
Crest Factor : 1
Tissue Temp. : 22.40 °C
Ambient Temp. : 22.60 °C
Set-up Date : 19-Nov-2007
Area Scan : 7x7x1 : Measurement x=10mm, y=10mm, z=4mm
Zoom Scan : 5x5x8 : Measurement x=8mm, y=8mm, z=4mm

Channel : Mid



1 gram SAR value : 39.956 W/kg
10 gram SAR value : 20.856 W/kg
Area Scan Peak SAR : 44.979 W/kg
Zoom Scan Peak SAR : 78.135 W/kg

Area Scan Plot



SAR-Z Axis
at Hotspot x:0.00 y:0.00

