

Appendix D

SAR measurement Data

of

Product Name

Notebook Personal Computer

Model

W130



1 CDMA2000(835MHz) SAR measurement Data

SAR Test Report

Report Date : 23-Nov-2006
Measurement Date : 23-Nov-2006

Product Data

Device Name : W130
Serial No. : 835-Side
Type : Other
Frequency : 835.00 MHz
Max. Transmit Pwr : 0.219 W
Drift Time : 0 min(s)
Length : 20 mm
Width : 165 mm
Depth : 2 mm
Antenna Type : Internal

Phantom Data

Name : APREL-Uni
Type : Uni-Phantom
Size (mm) : 280 x 280 x 200
Location : Center

Tissue Data

Type : BODY
Serial No. : 835BODY
Frequency : 835.00 MHz
Last Calib. Date : 23-Nov-2006
Temperature : 22.20 °C
Ambient Temp. : 22.10 °C
Humidity : 49.00 RH%
Epsilon : 55.12 F/m
Sigma : 0.96 S/m
Density : 1000.00 kg/cu. m

Probe Data

Name : E-field Probe
Model : ALS-E-020
Type : E-Field Triangle
Serial No. : 266
Last Calib. Date : 22-Jun-2006
Frequency : 835.00 MHz
Duty Cycle Factor: 1
Conversion Factor: 6.9
Probe Sensitivity: 1.20 1.20 1.20 $\mu\text{V}/(\text{V}/\text{m})^2$
Compression Point: 95.00 mV
Offset : 1.56 mm

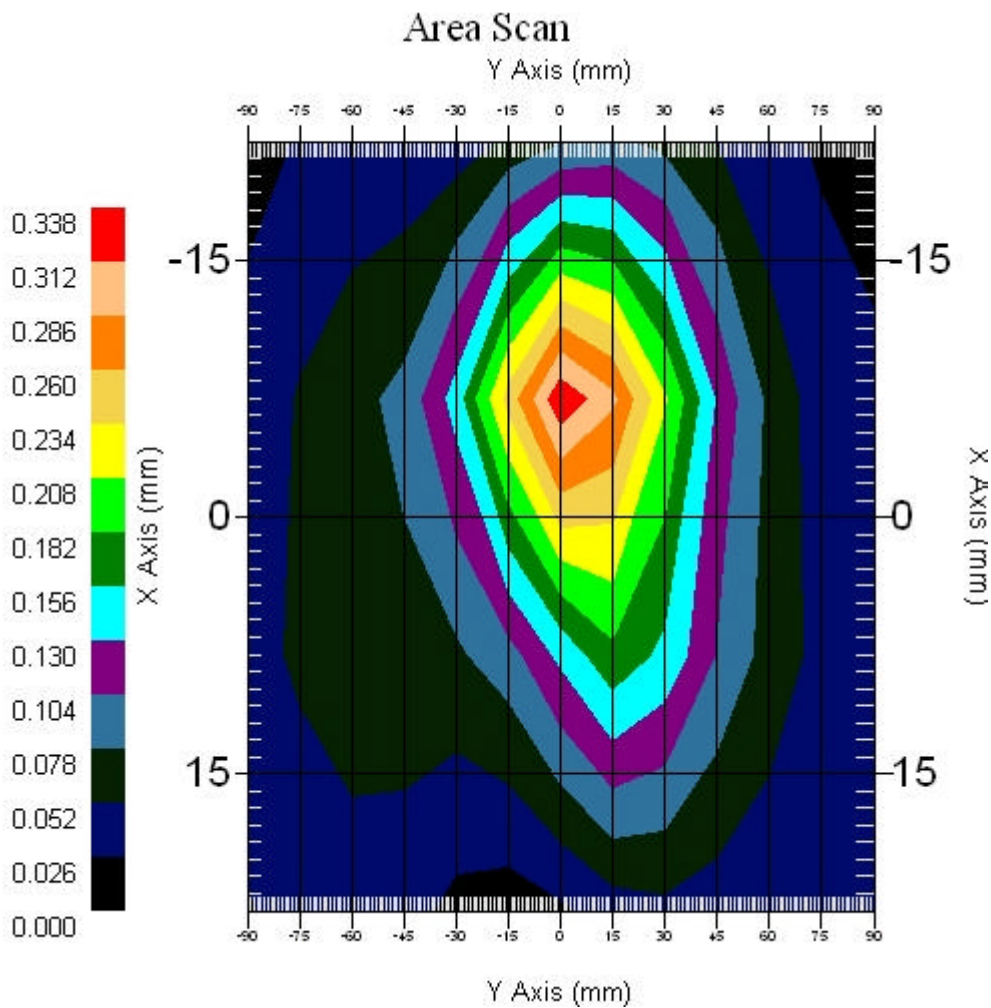
1.1 FTAP 835 MHz, EUT Position: Side

Measurement Data

Crest Factor : 1
Area Scan : 4x13x1 : Measurement x=15mm, y=15mm, z=4mm
Zoom Scan : 5x5x8 : Measurement x=8mm, y=8mm, z=4mm

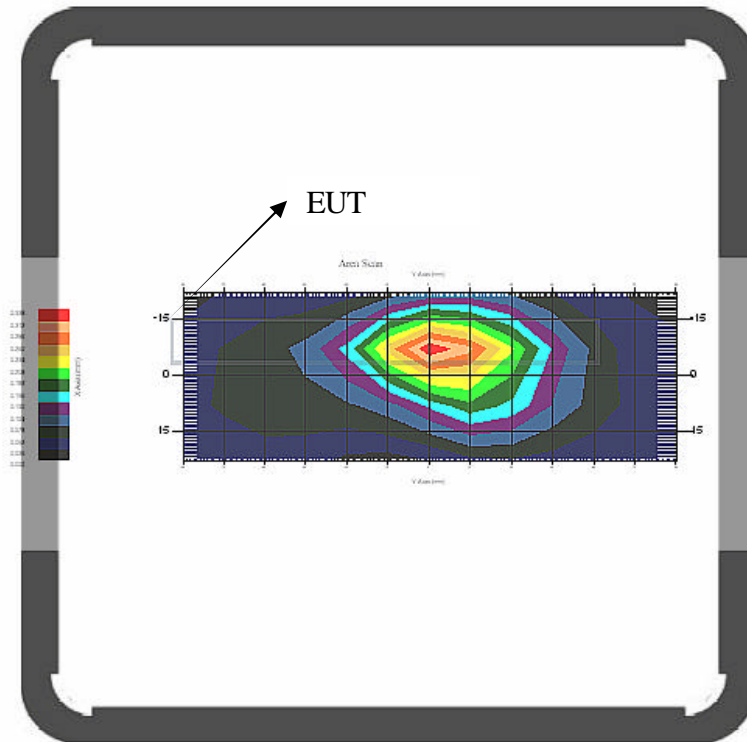
DUT Position : Touch
Channel : Mid - 836.4MHz

Power Drift-Start : 0.289 W/kg
Power Drift-Finish: 0.297 W/kg
Power Drift (%) : 2.768



1 gram SAR value : 0.311 W/kg
10 gram SAR value : 0.180 W/kg
Area Scan Peak SAR : 0.332 W/kg
Zoom Scan Peak SAR : 0.560 W/kg

Outline of the EUT on the plot





2 CDMA2000(835MHz) SAR measurement Data

SAR Test Report

Report Date : 23-Nov-2006
Measurement Date : 23-Nov-2006

Product Data

Device Name : W130
Serial No. : 835-Side
Type : Other
Frequency : 835.00 MHz
Max. Transmit Pwr : 0.219 W
Drift Time : 0 min(s)
Length : 20 mm
Width : 165 mm
Depth : 2 mm
Antenna Type : Internal

Phantom Data

Name : APREL-Uni
Type : Uni-Phantom
Size (mm) : 280 x 280 x 200
Location : Center

Tissue Data

Type : BODY
Serial No. : 835BODY
Frequency : 835.00 MHz
Last Calib. Date : 23-Nov-2006
Temperature : 22.20 °C
Ambient Temp. : 22.10 °C
Humidity : 49.00 RH%
Epsilon : 55.12 F/m
Sigma : 0.96 S/m
Density : 1000.00 kg/cu. m

Probe Data

Name : E-field Probe
Model : ALS-E-020
Type : E-Field Triangle
Serial No. : 266
Last Calib. Date : 22-Jun-2006
Frequency : 835.00 MHz
Duty Cycle Factor: 1
Conversion Factor: 6.9
Probe Sensitivity: 1.20 1.20 1.20 $\mu\text{V}/(\text{V}/\text{m})^2$
Compression Point: 95.00 mV
Offset : 1.56 mm

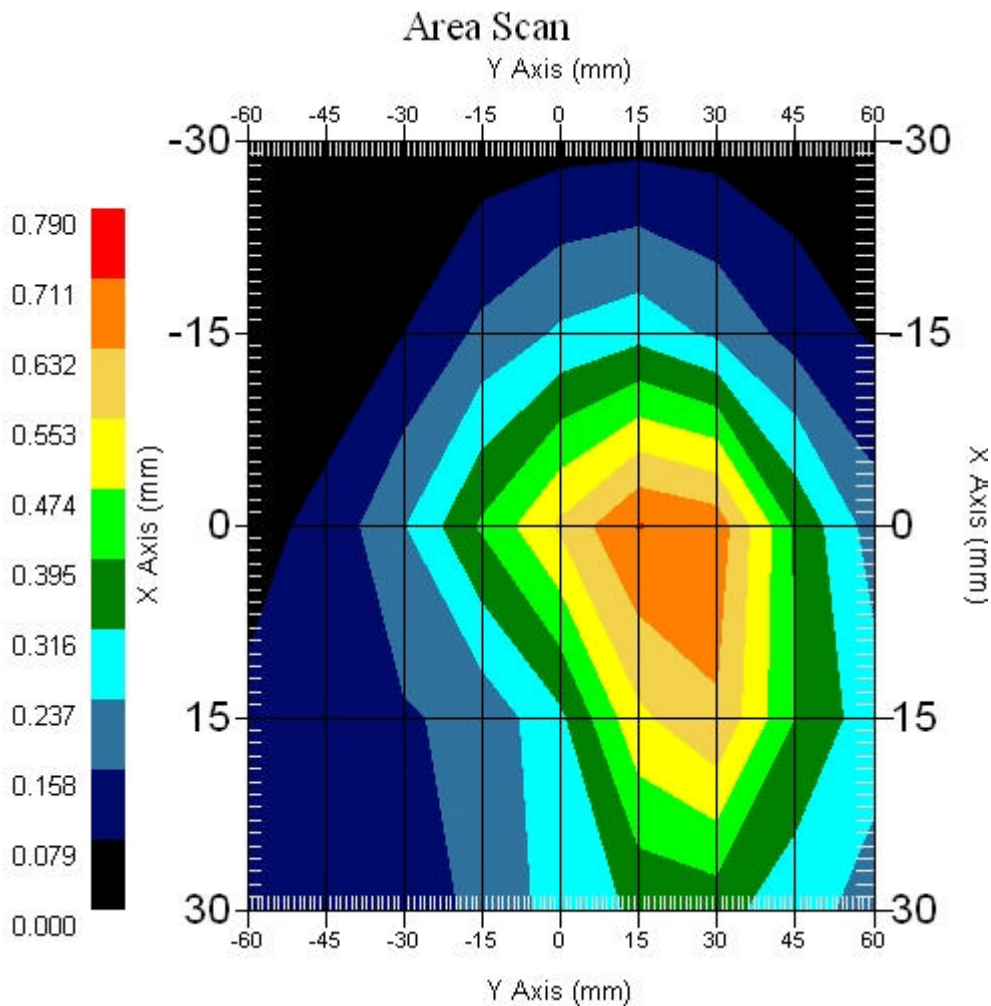
2.1 RTAP 835 MHz, EUT Position: Side

Measurement Data

Crest Factor : 1
Area Scan : 5x9x1 : Measurement x=15mm, y=15mm, z=4mm
Zoom Scan : 5x5x8 : Measurement x=8mm, y=8mm, z=4mm

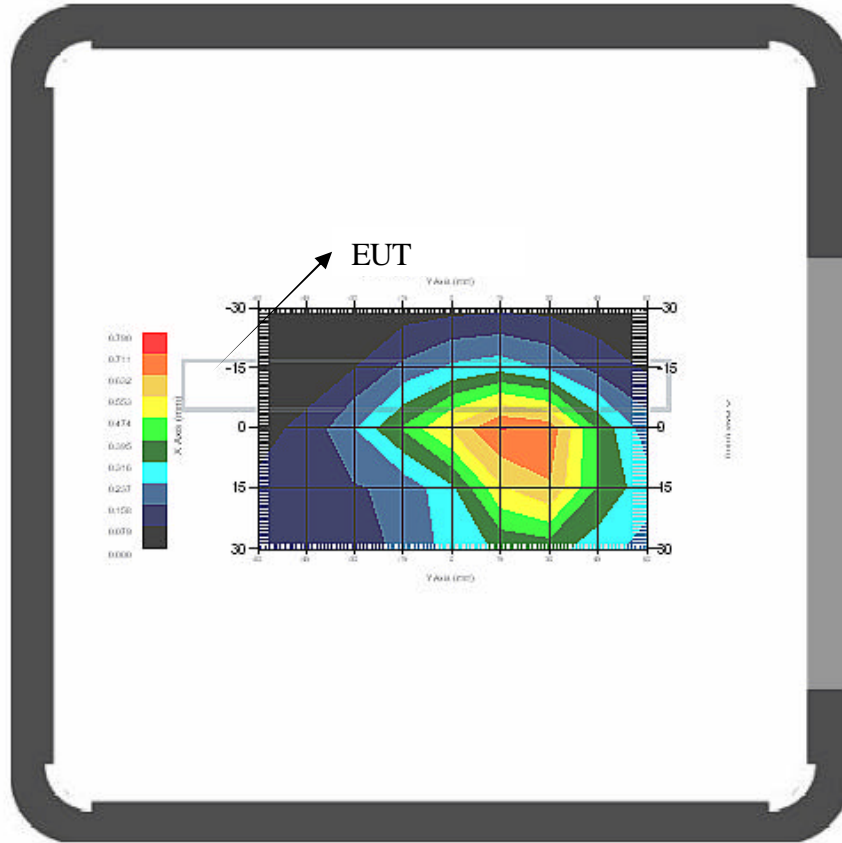
DUT Position : Touch
Channel : Low - 824.73MHz

Power Drift-Start : 0.589 W/kg
Power Drift-Finish: 0.589 W/kg
Power Drift (%) : -0.107



1 gram SAR value : 0.719 W/kg
10 gram SAR value : 0.447 W/kg
Area Scan Peak SAR : 0.715 W/kg
Zoom Scan Peak SAR : 1.141 W/kg

Outline of the EUT on the plot



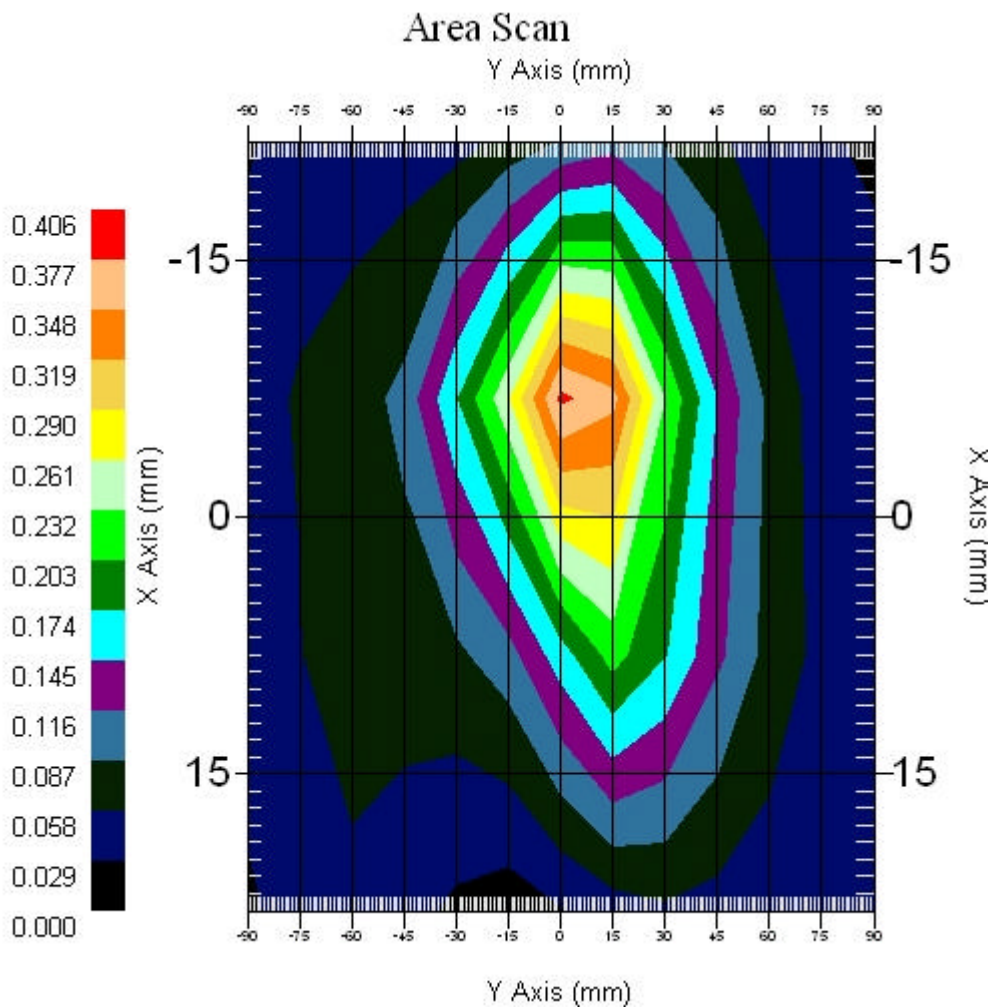
2.2 RTAP 835 MHz, EUT Position: Side

Measurement Data

Crest Factor : 1
Area Scan : 4x13x1 : Measurement x=15mm, y=15mm, z=4mm
Zoom Scan : 5x5x8 : Measurement x=8mm, y=8mm, z=4mm

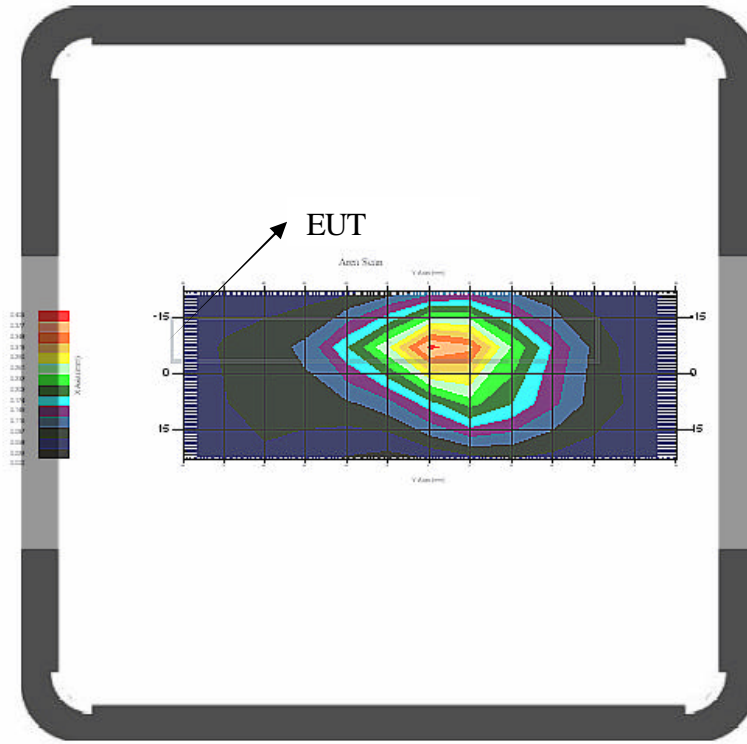
DUT Position : Touch
Channel : Mid - 836.4MHz

Power Drift-Start : 0.360 W/kg
Power Drift-Finish: 0.351 W/kg
Power Drift (%) : -2.500



1 gram SAR value : 0.344 W/kg
10 gram SAR value : 0.193 W/kg
Area Scan Peak SAR : 0.383 W/kg
Zoom Scan Peak SAR : 0.590 W/kg

Outline of the EUT on the plot



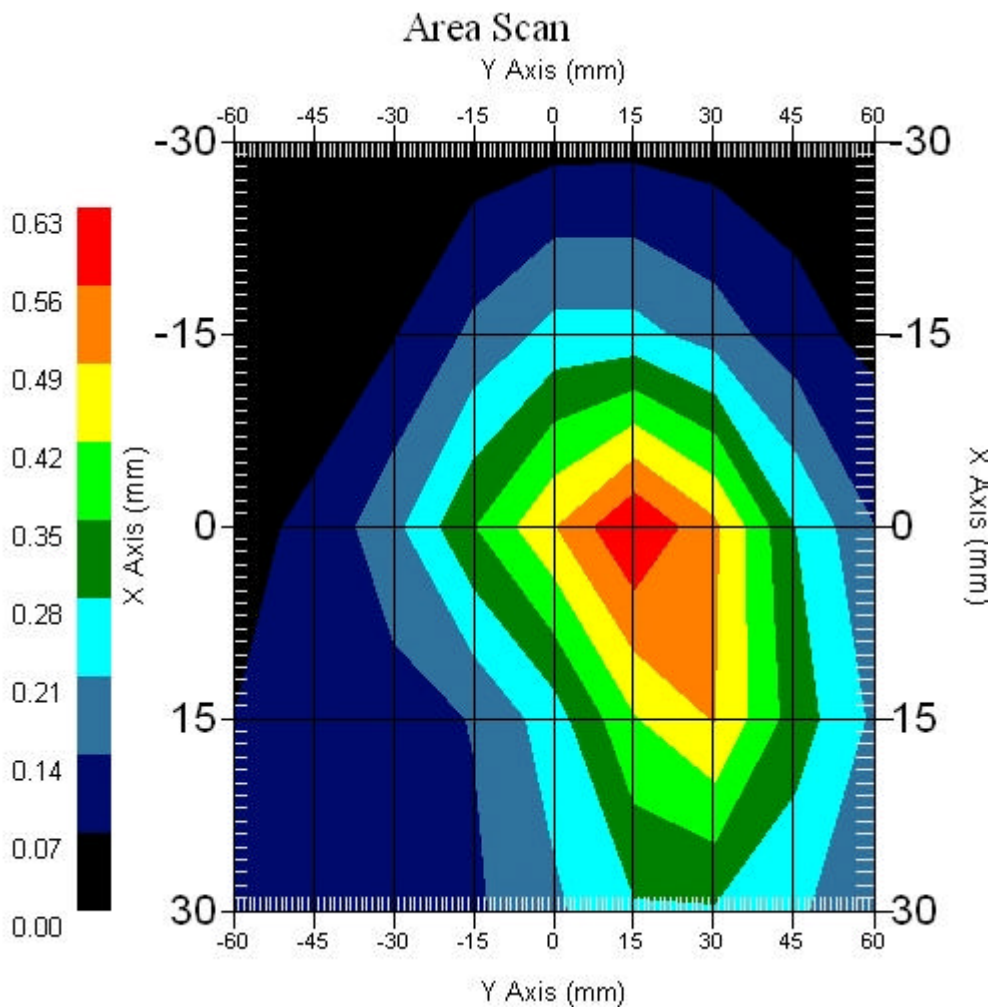
2.3 RTAP 835 MHz, EUT Position: Side

Measurement Data

Crest Factor : 1
Area Scan : 5x9x1 : Measurement x=15mm, y=15mm, z=4mm
Zoom Scan : 5x5x8 : Measurement x=8mm, y=8mm, z=4mm

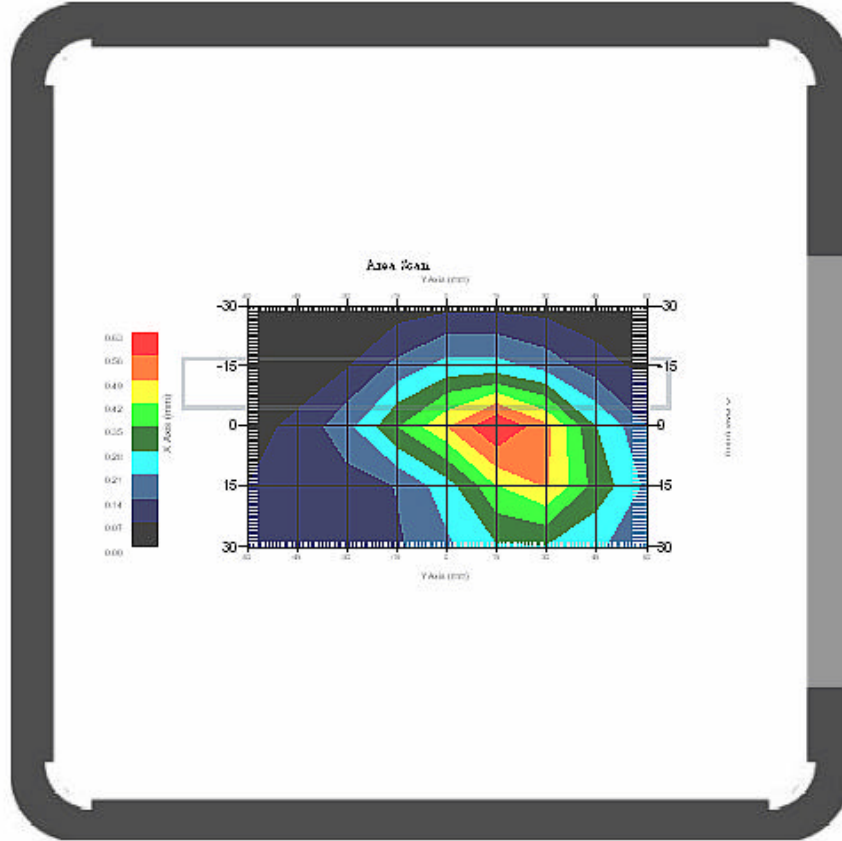
DUT Position : Touch
Channel : High - 848.19MHz

Power Drift-Start : 0.505 W/kg
Power Drift-Finish: 0.512 W/kg
Power Drift (%) : 1.381



1 gram SAR value : 0.571 W/kg
10 gram SAR value : 0.333 W/kg
Area Scan Peak SAR : 0.630 W/kg
Zoom Scan Peak SAR : 0.930 W/kg

Outline of the EUT on the plot



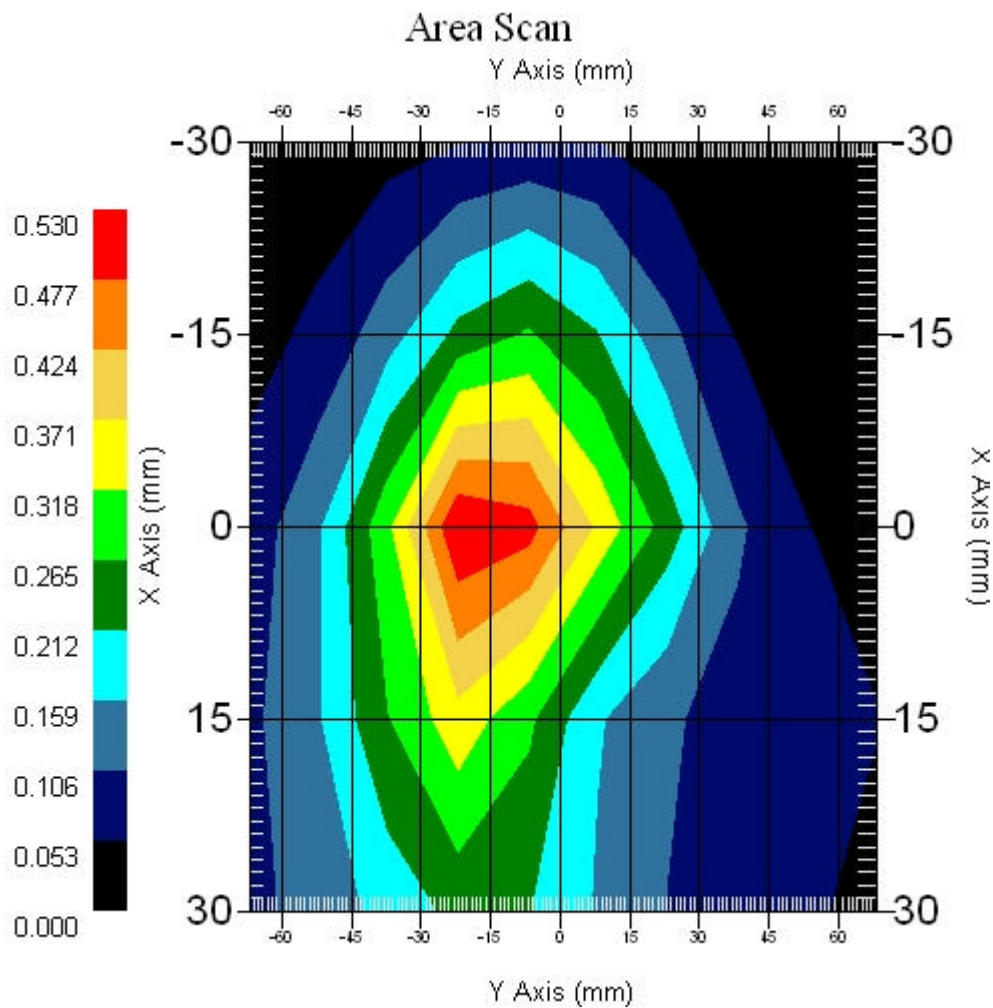
2.4 RTAP 835 MHz, EUT Position: Back

Measurement Data

Crest Factor : 1
Area Scan : 5x10x1 : Measurement x=15mm, y=15mm, z=4mm
Zoom Scan : 5x5x8 : Measurement x=8mm, y=8mm, z=4mm

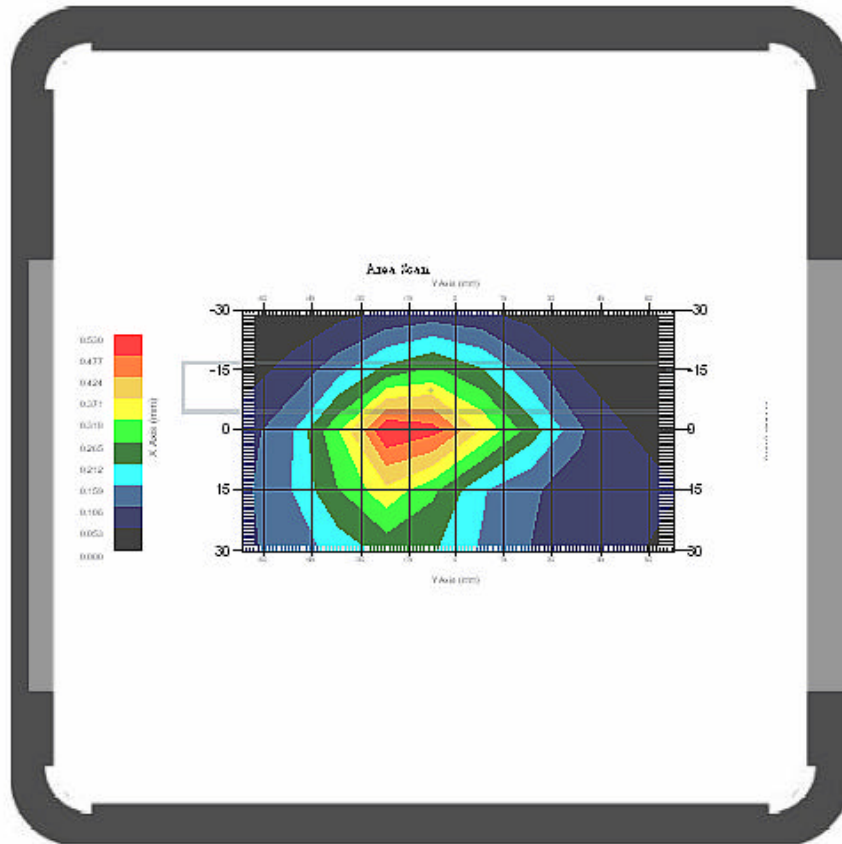
DUT Position : Touch
Channel : Low - 824.73MHz

Power Drift-Start : 0.448 W/kg
Power Drift-Finish: 0.437 W/kg
Power Drift (%) : -2.455



1 gram SAR value : 0.425 W/kg
10 gram SAR value : 0.253 W/kg
Area Scan Peak SAR : 0.526 W/kg
Zoom Scan Peak SAR : 0.720 W/kg

Outline of the EUT on the plot



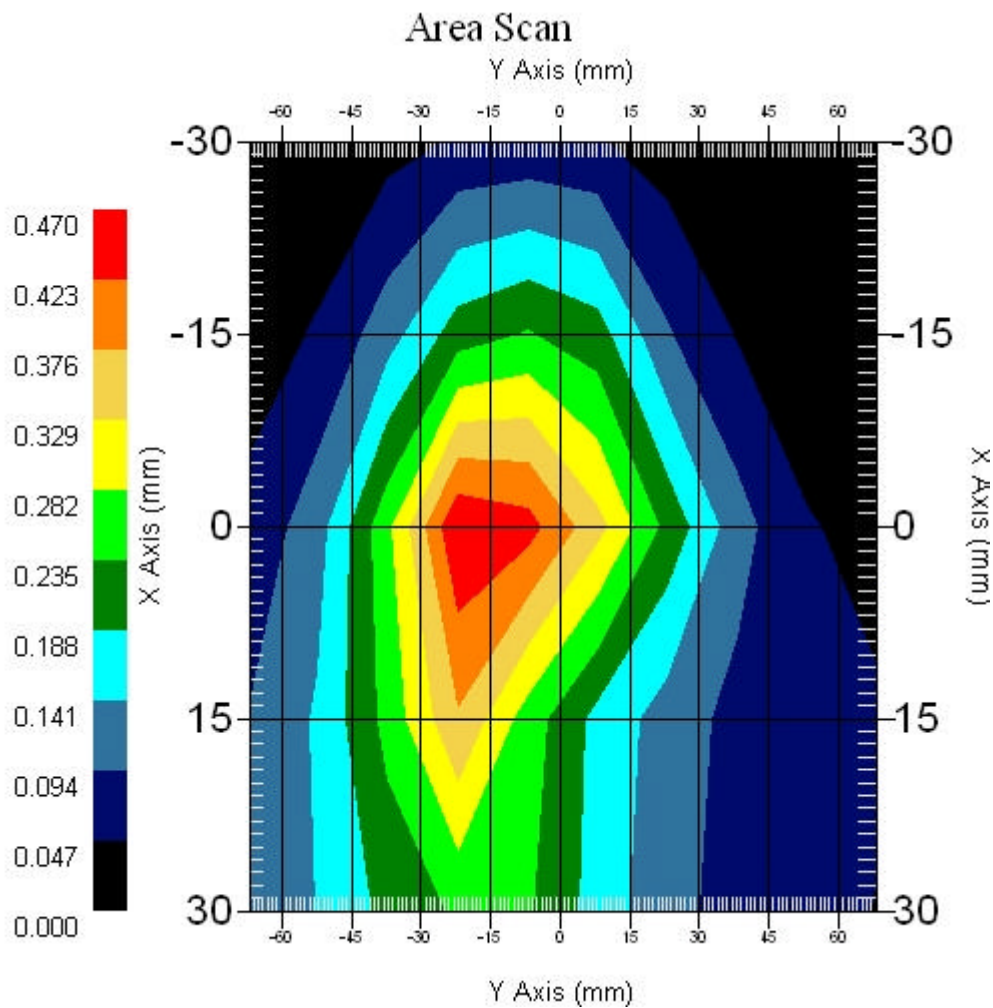
2.5 RTAP 835 MHz, EUT Position: Back

Measurement Data

Crest Factor : 1
Area Scan : 5x10x1 : Measurement x=15mm, y=15mm, z=4mm
Zoom Scan : 5x5x8 : Measurement x=8mm, y=8mm, z=4mm

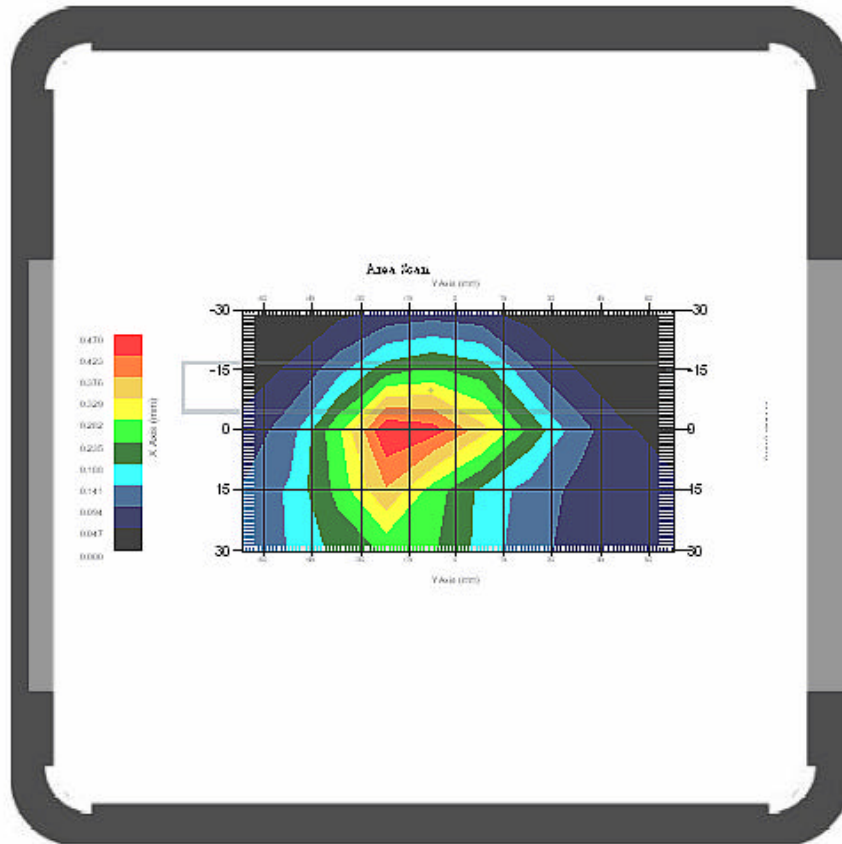
DUT Position : Touch
Channel : Mid - 836.4MHz

Power Drift-Start : 0.402 W/kg
Power Drift-Finish: 0.417 W/kg
Power Drift (%) : 3.731



1 gram SAR value : 0.498 W/kg
10 gram SAR value : 0.287 W/kg
Area Scan Peak SAR : 0.465 W/kg
Zoom Scan Peak SAR : 0.860 W/kg

Outline of the EUT on the plot



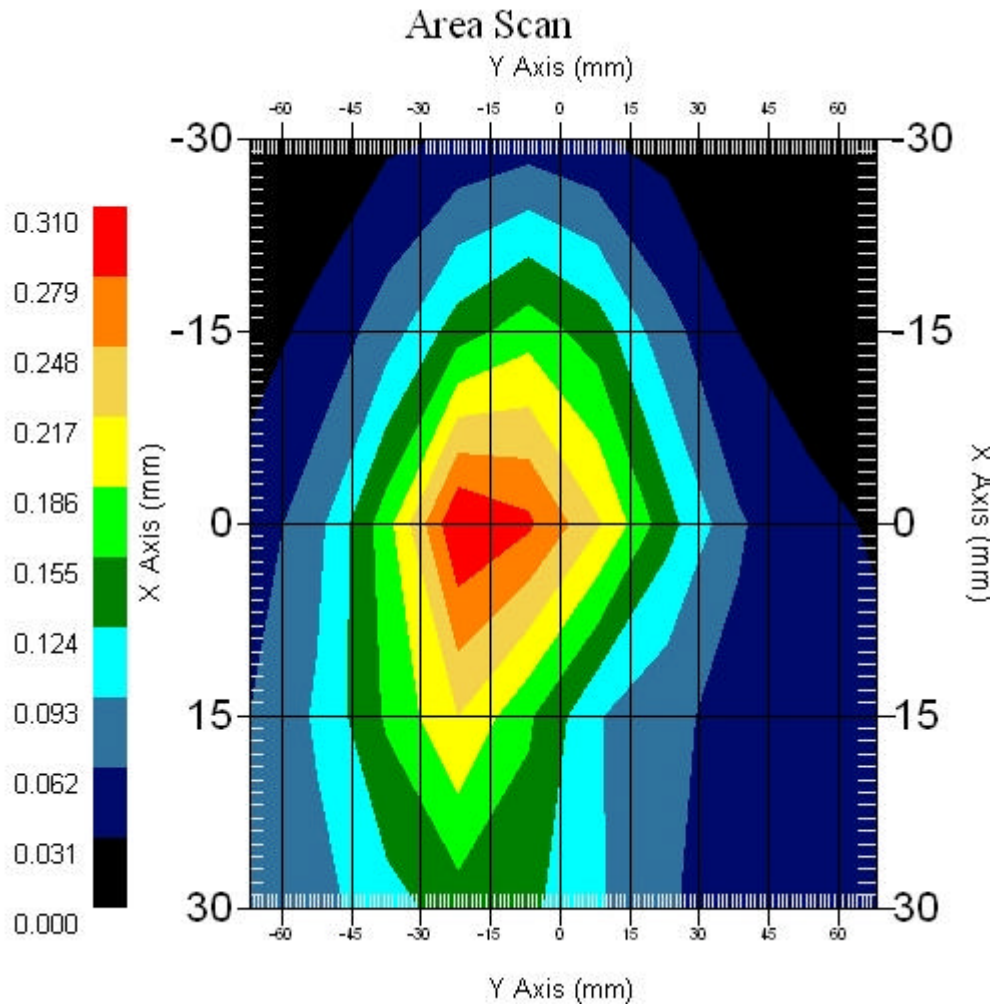
2.6 RTAP 835 MHz, EUT Position: Back

Measurement Data

Crest Factor : 1
Area Scan : 5x10x1 : Measurement x=15mm, y=15mm, z=4mm
Zoom Scan : 5x5x8 : Measurement x=8mm, y=8mm, z=4mm

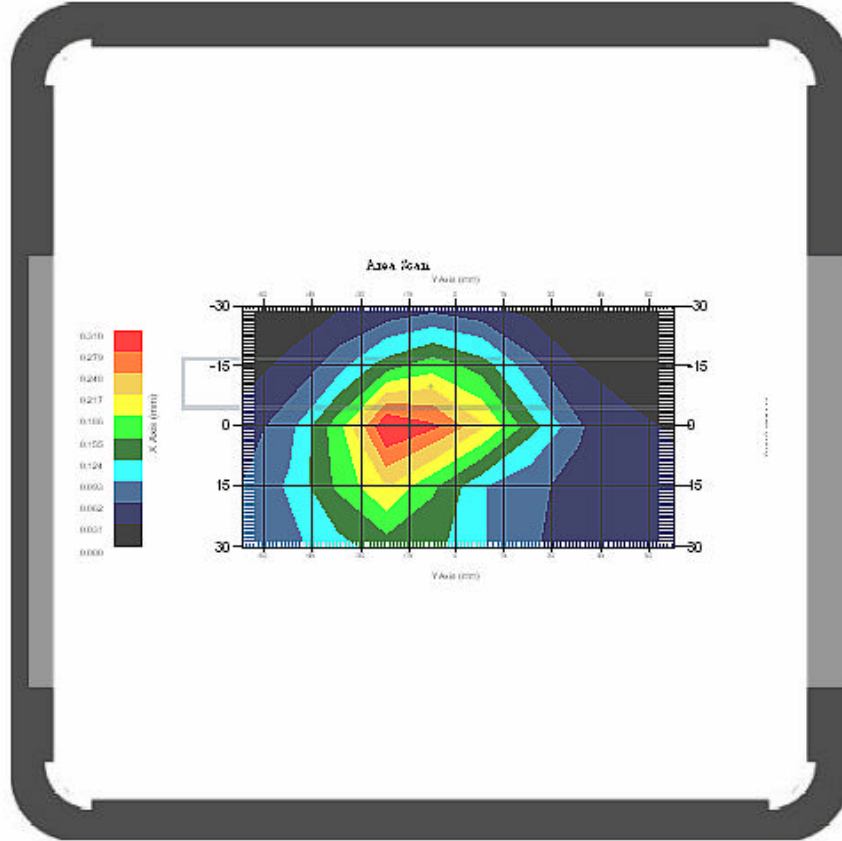
DUT Position : Touch
Channel : High - 848.19MHz

Power Drift-Start : 0.257 W/kg
Power Drift-Finish: 0.252 W/kg
Power Drift (%) : -1.945



1 gram SAR value : 0.268 W/kg
10 gram SAR value : 0.163 W/kg
Area Scan Peak SAR : 0.310 W/kg
Zoom Scan Peak SAR : 0.440 W/kg

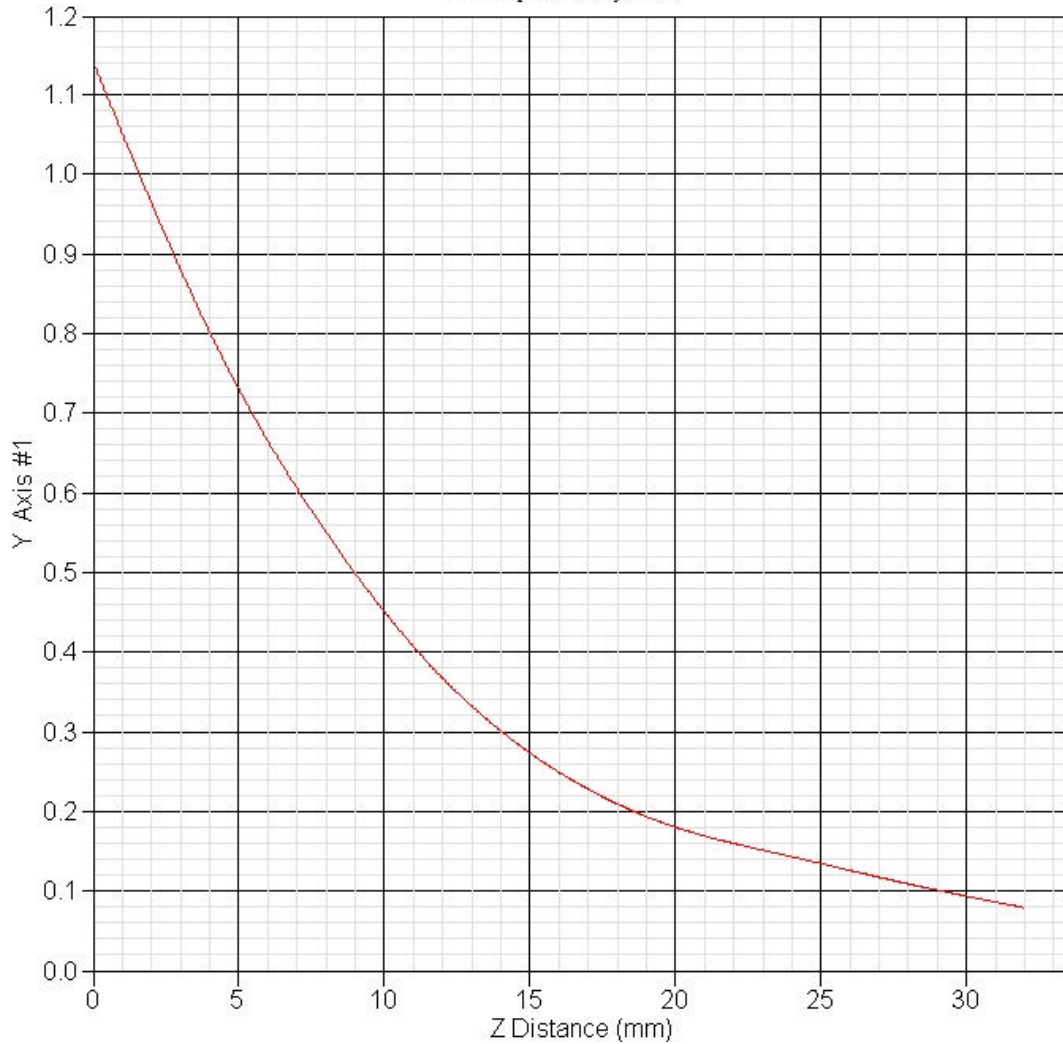
Outline of the EUT on the plot



2.7 RTAP 835MHz Z-Axis plot

Frequency: RTAP 835MHz, EUT Side

SAR-Z Axis
at Hotspot x:0.30 y:22.80





3 CDMA2000(1900MHz) SAR measurement Data

SAR Test Report

Report Date : 23-Nov-2006
Measurement Date : 23-Nov-2006

Product Data

Device Name : W130
Serial No. : 1900-Side
Type : Other
Frequency : 1900.00 MHz
Max. Transmit Pwr : 0.269 W
Drift Time : 0 min(s)
Length : 20 mm
Width : 165 mm
Depth : 2 mm
Antenna Type : Internal

Phantom Data

Name : APREL-Uni
Type : Uni-Phantom
Size (mm) : 280 x 280 x 200
Location : Center

Tissue Data

Type : BODY
Serial No. : 1900BODY
Frequency : 1900.00 MHz
Last Calib. Date : 23-Nov-2006
Temperature : 22.20 °C
Ambient Temp. : 22.30 °C
Humidity : 49.00 RH%
Epsilon : 53.67 F/m
Sigma : 1.51 S/m
Density : 1000.00 kg/cu. m

Probe Data

Name : E-field Probe
Model : ALS-E-020
Type : E-Field Triangle
Serial No. : 266
Last Calib. Date : 22-Jun-2006
Frequency : 1900.00 MHz
Duty Cycle Factor: 1
Conversion Factor: 5.41
Probe Sensitivity: 1.20 1.20 1.20 $\mu\text{V}/(\text{V}/\text{m})^2$
Compression Point: 95.00 mV
Offset : 1.56 mm

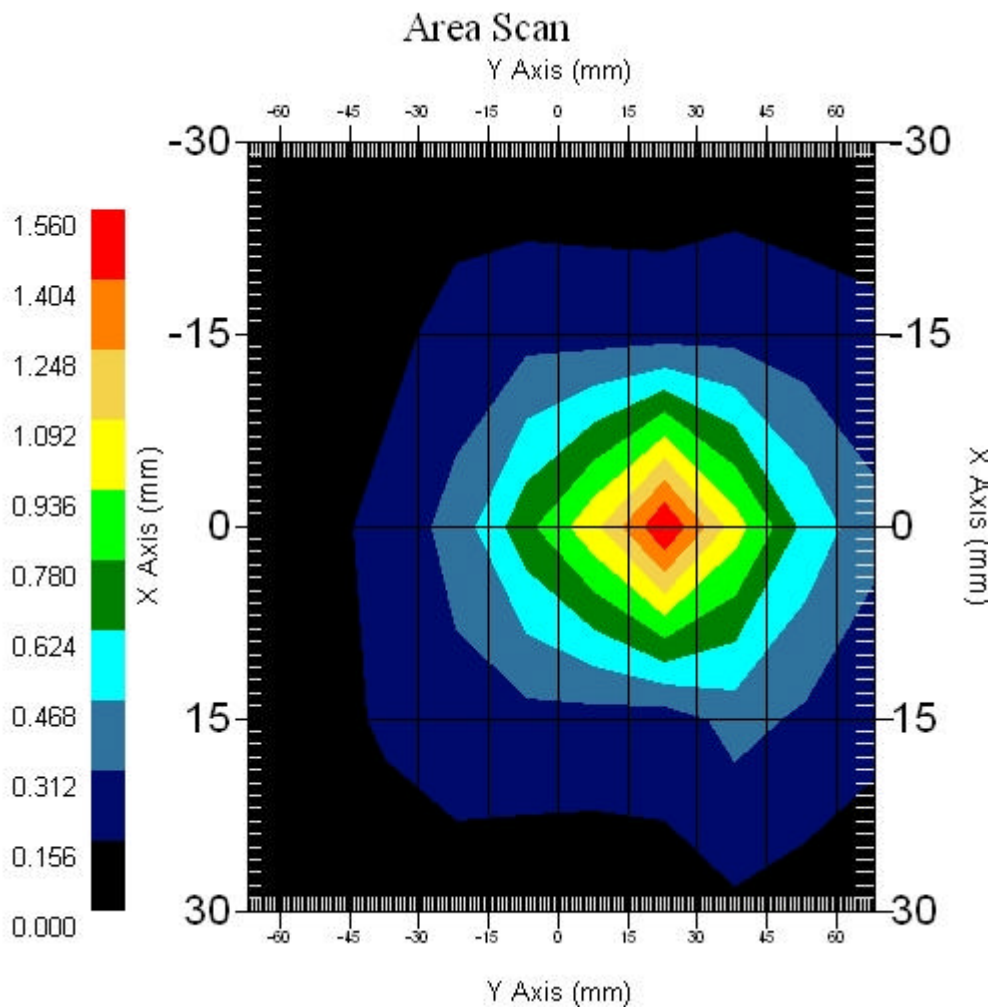
3.1 FTAP 1900 MHz, EUT Position: Side

Measurement Data

Crest Factor : 1
Area Scan : 5x10x1 : Measurement x=15mm, y=15mm, z=4mm
Zoom Scan : 5x5x8 : Measurement x=8mm, y=8mm, z=4mm

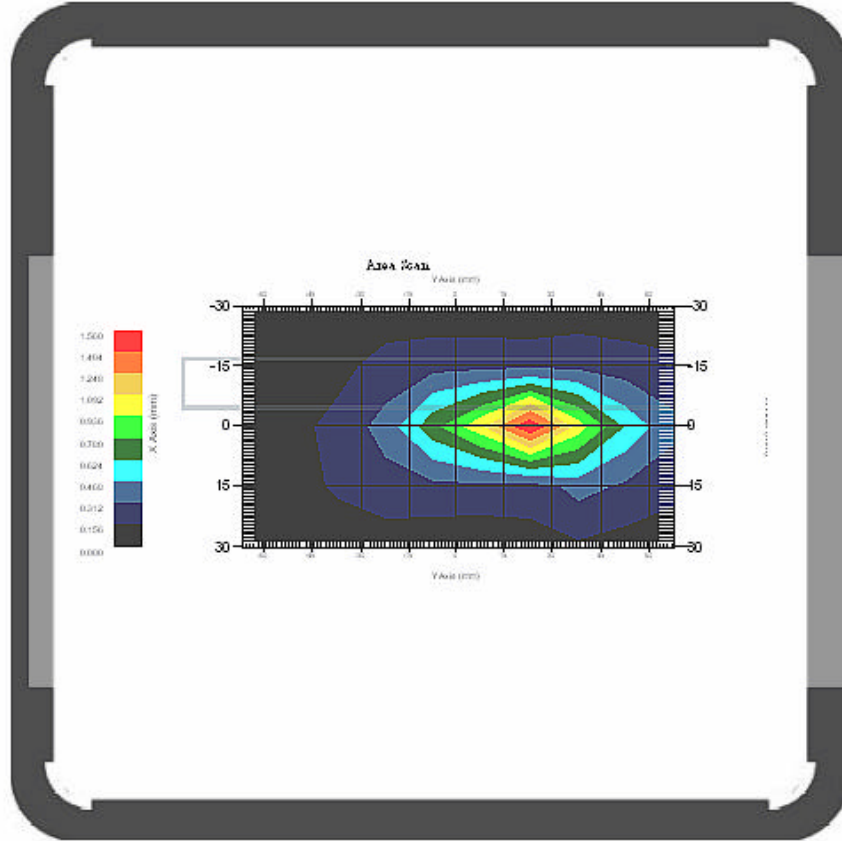
DUT Position : Touch
Channel : Mid - 1880MHz

Power Drift-Start : 0.811 W/kg
Power Drift-Finish: 0.810 W/kg
Power Drift (%) : -0.031



1 gram SAR value : 1.262 W/kg
10 gram SAR value : 0.586 W/kg
Area Scan Peak SAR : 1.558 W/kg
Zoom Scan Peak SAR : 2.672 W/kg

Outline of the EUT on the plot





4 CDMA2000(1900MHz) SAR measurement Data

Report Date : 23-Nov-2006
Measurement Date : 23-Nov-2006

Product Data

Device Name : W130
Serial No. : 1900-Side
Type : Other
Frequency : 1900.00 MHz
Max. Transmit Pwr : 0.269 W
Drift Time : 0 min(s)
Length : 20 mm
Width : 165 mm
Depth : 2 mm
Antenna Type : Internal

Phantom Data

Name : APREL-Uni
Type : Uni-Phantom
Size (mm) : 280 x 280 x 200
Location : Center

Tissue Data

Type : BODY
Serial No. : 1900BODY
Frequency : 1900.00 MHz
Last Calib. Date : 23-Nov-2006
Temperature : 22.20 °C
Ambient Temp. : 22.30 °C
Humidity : 49.00 RH%
Epsilon : 53.67 F/m
Sigma : 1.51 S/m
Density : 1000.00 kg/cu. m

Probe Data

Name : E-field Probe
Model : ALS-E-020
Type : E-Field Triangle
Serial No. : 266
Last Calib. Date : 22-Jun-2006
Frequency : 1900.00 MHz
Duty Cycle Factor: 1
Conversion Factor: 5.41
Probe Sensitivity: 1.20 1.20 1.20 $\mu\text{V}/(\text{V}/\text{m})^2$
Compression Point: 95.00 mV
Offset : 1.56 mm

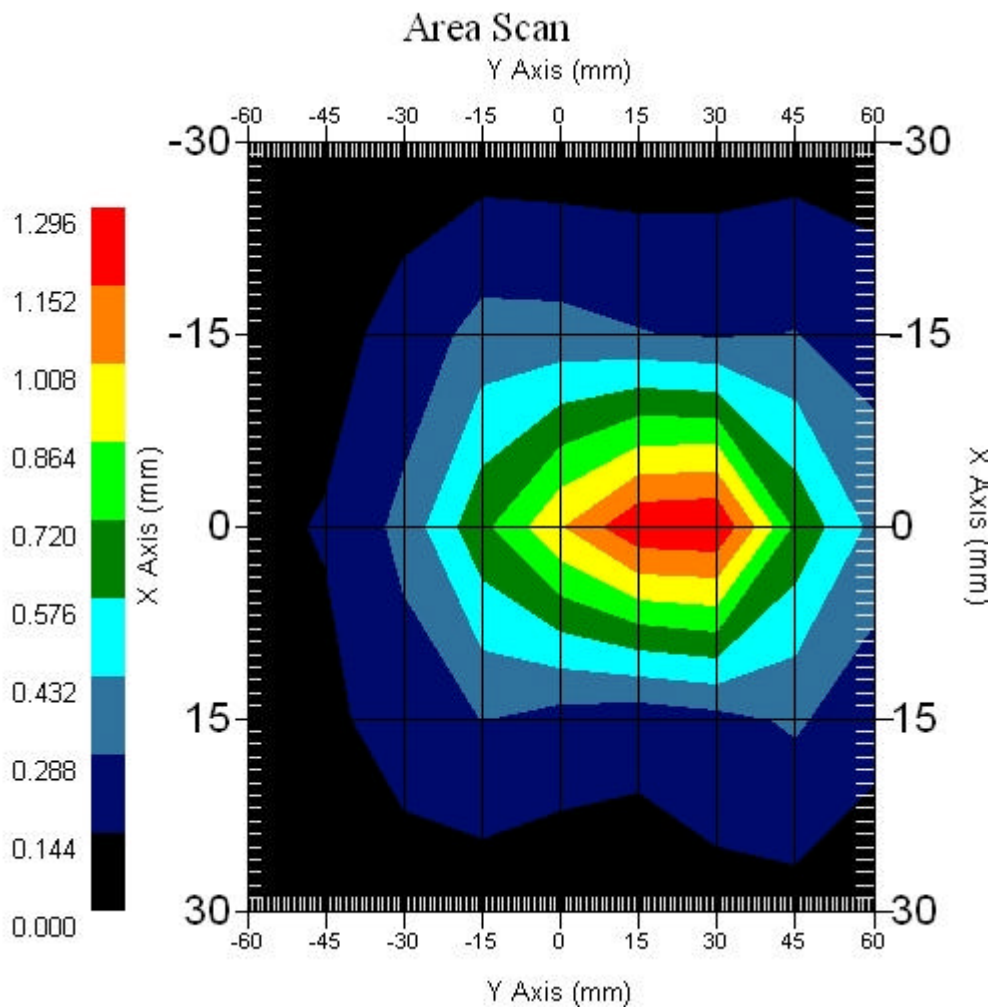
4.1 RTAP 1900 MHz, EUT Position: Side

Measurement Data

Crest Factor : 1
Area Scan : 5x9x1 : Measurement x=15mm, y=15mm, z=4mm
Zoom Scan : 5x5x8 : Measurement x=8mm, y=8mm, z=4mm

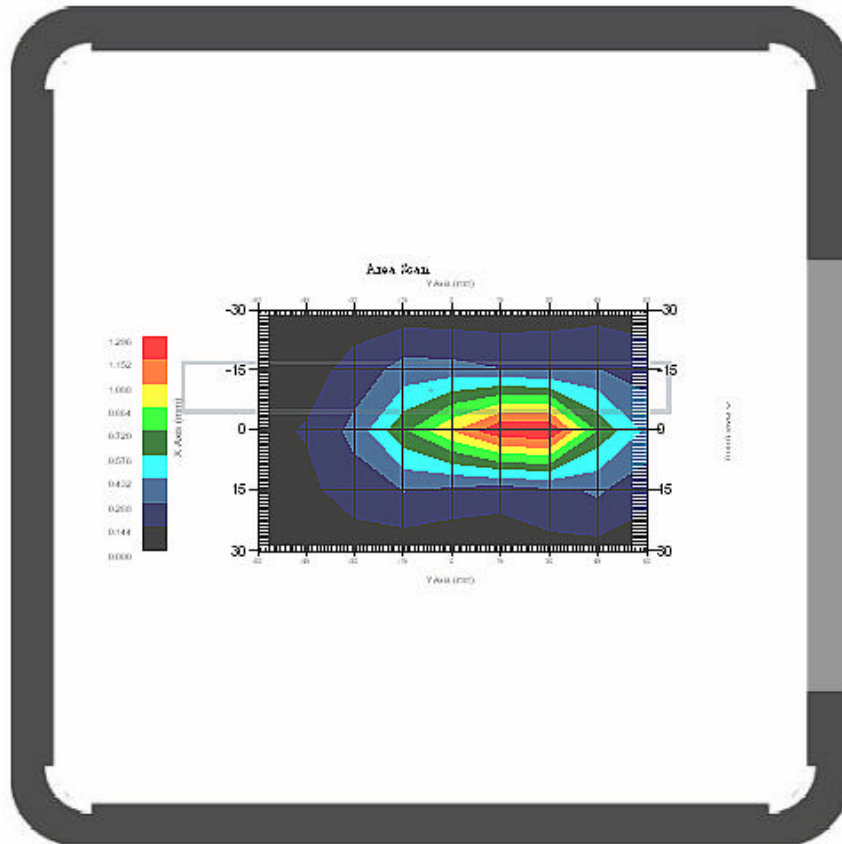
DUT Position : Touch
Channel : Low - 1851.25MHz

Power Drift-Start : 0.954 W/kg
Power Drift-Finish: 0.950 W/kg
Power Drift (%) : -0.396



1 gram SAR value : 1.135 W/kg
10 gram SAR value : 0.565 W/kg
Area Scan Peak SAR : 1.292 W/kg
Zoom Scan Peak SAR : 2.161 W/kg

Outline of the EUT on the plot



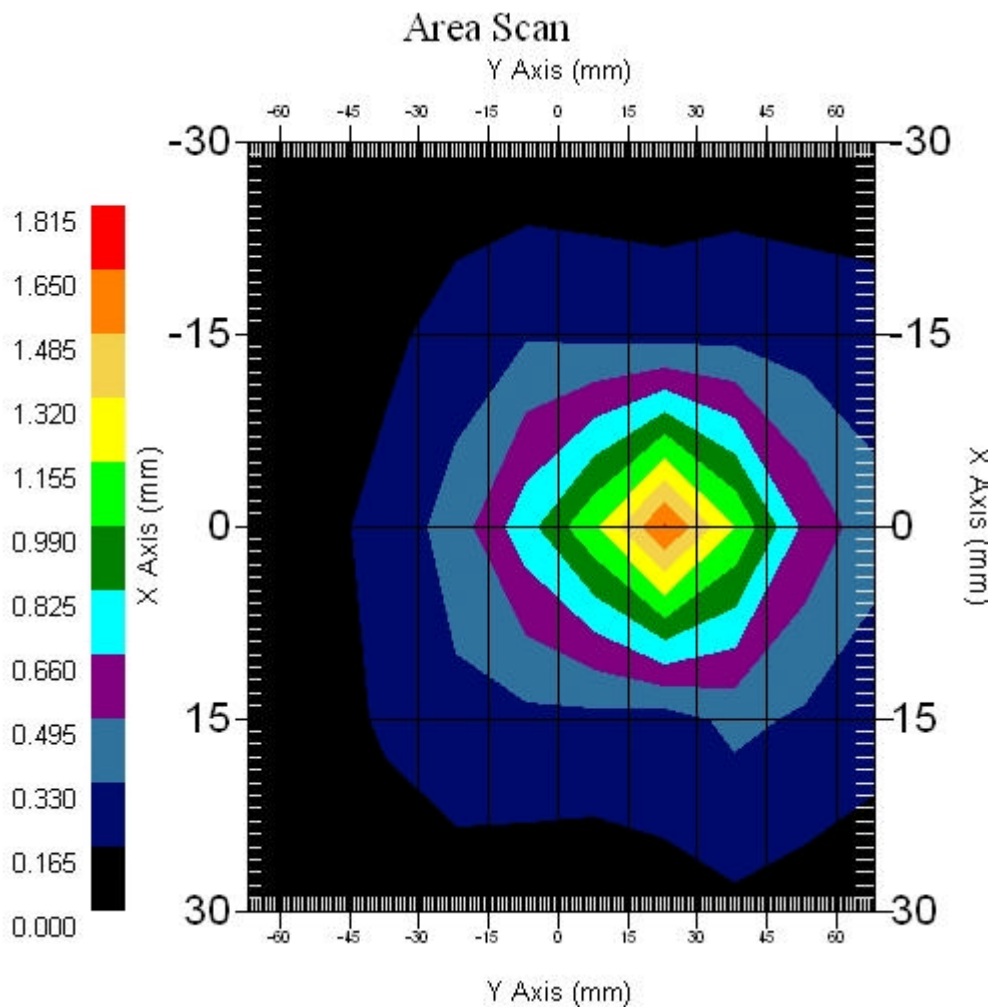
4.2 RTAP 1900 MHz, EUT Position: Side

Measurement Data

Crest Factor : 1
Area Scan : 5x10x1 : Measurement x=15mm, y=15mm, z=4mm
Zoom Scan : 5x5x8 : Measurement x=8mm, y=8mm, z=4mm

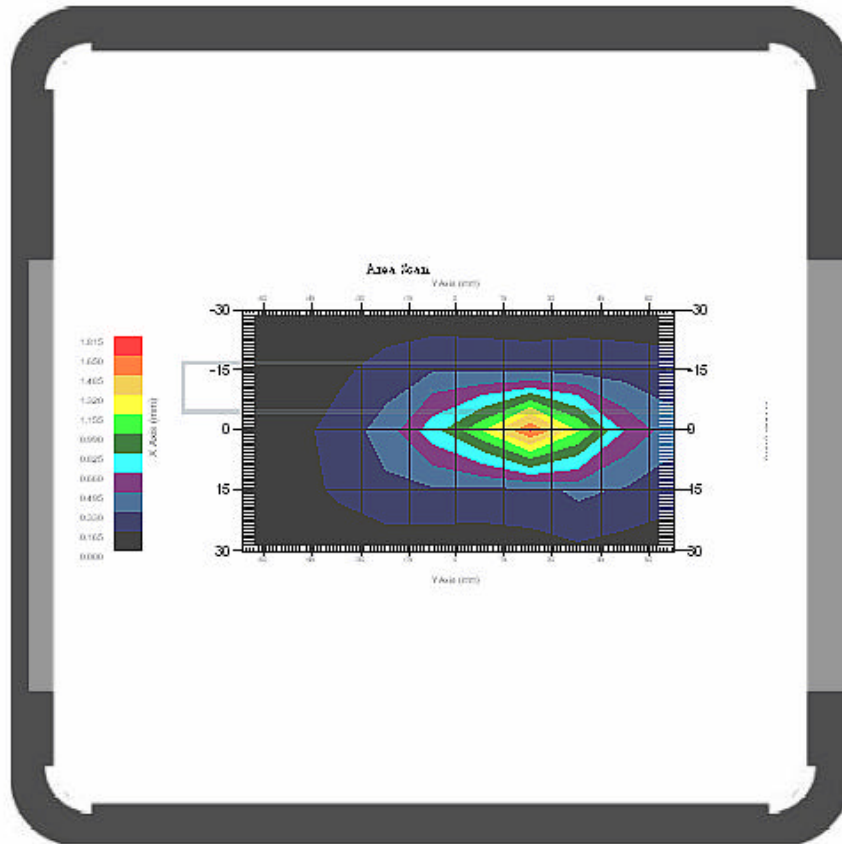
DUT Position : Touch
Channel : Mid - 1880MHz

Power Drift-Start : 0.937 W/kg
Power Drift-Finish: 0.958 W/kg
Power Drift (%) : 2.261



1 gram SAR value : 1.395 W/kg
10 gram SAR value : 0.640 W/kg
Area Scan Peak SAR : 1.652 W/kg
Zoom Scan Peak SAR : 3.092 W/kg

Outline of the EUT on the plot



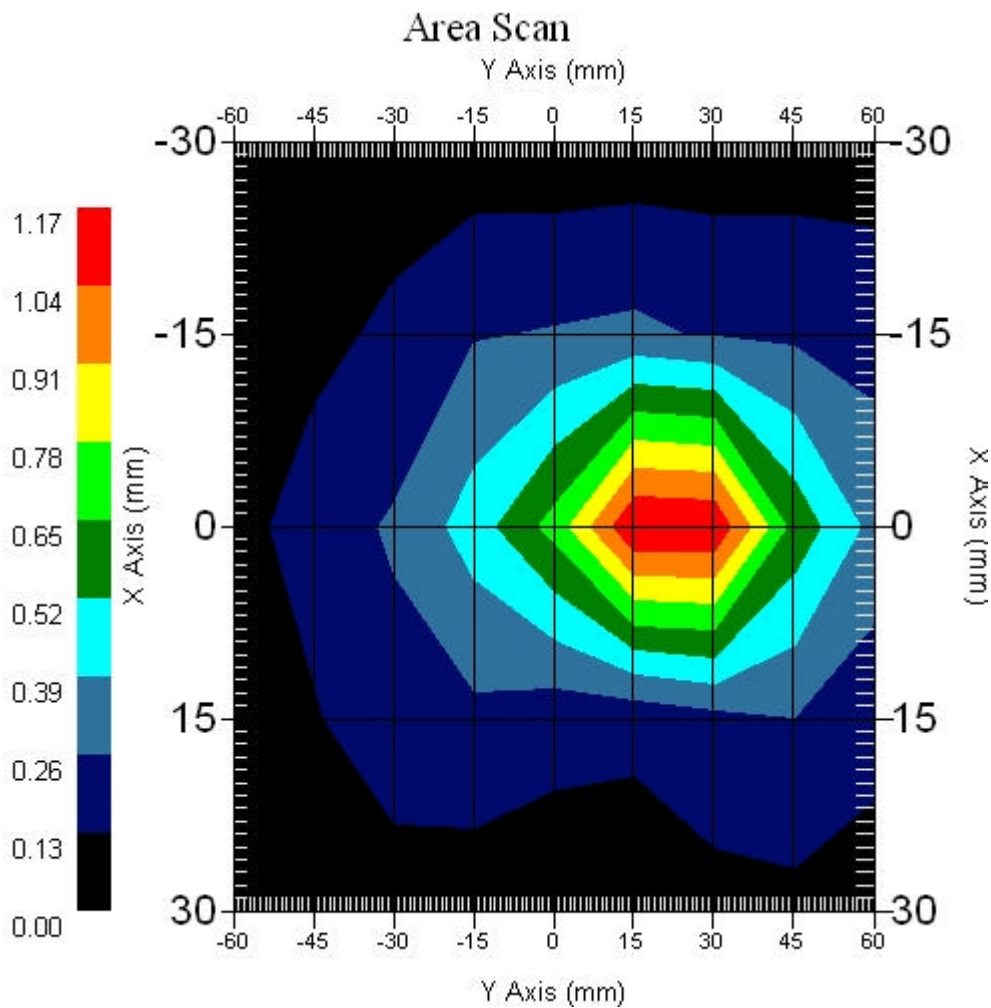
4.3 RTAP 1900 MHz, EUT Position: Side

Measurement Data

Crest Factor : 1
Area Scan : 5x9x1 : Measurement x=15mm, y=15mm, z=4mm
Zoom Scan : 5x5x8 : Measurement x=8mm, y=8mm, z=4mm

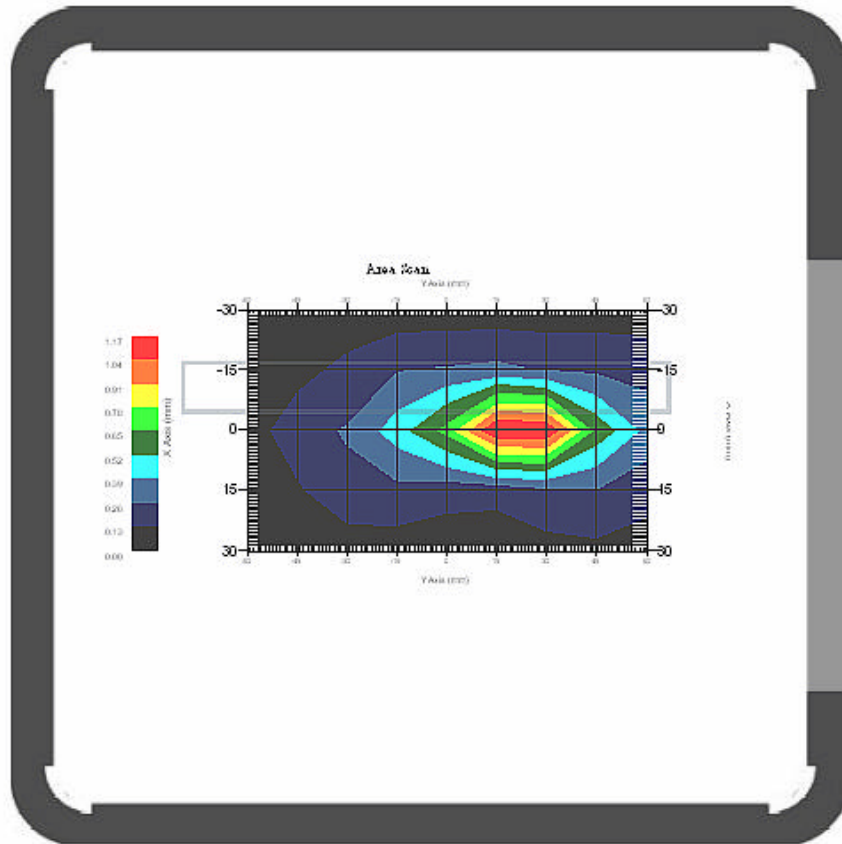
DUT Position : Touch
Channel : High - 1908.75MHz

Power Drift-Start : 0.731 W/kg
Power Drift-Finish: 0.745 W/kg
Power Drift (%) : 1.915



1 gram SAR value : 1.003 W/kg
10 gram SAR value : 0.491 W/kg
Area Scan Peak SAR : 1.169 W/kg
Zoom Scan Peak SAR : 1.941 W/kg

Outline of the EUT on the plot



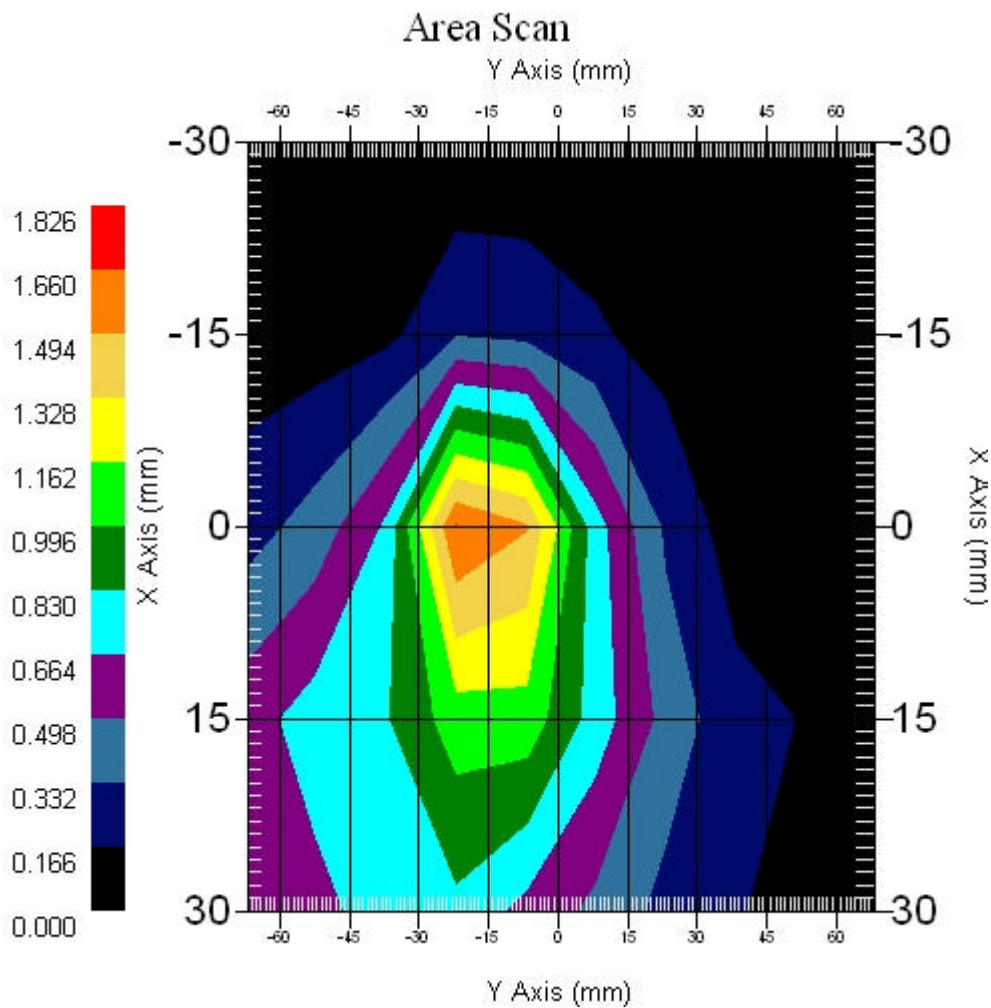
4.4 RTAP 1900 MHz, EUT Position: Back

Measurement Data

Crest Factor : 1
Area Scan : 5x10x1 : Measurement x=15mm, y=15mm, z=4mm
Zoom Scan : 5x5x8 : Measurement x=8mm, y=8mm, z=4mm

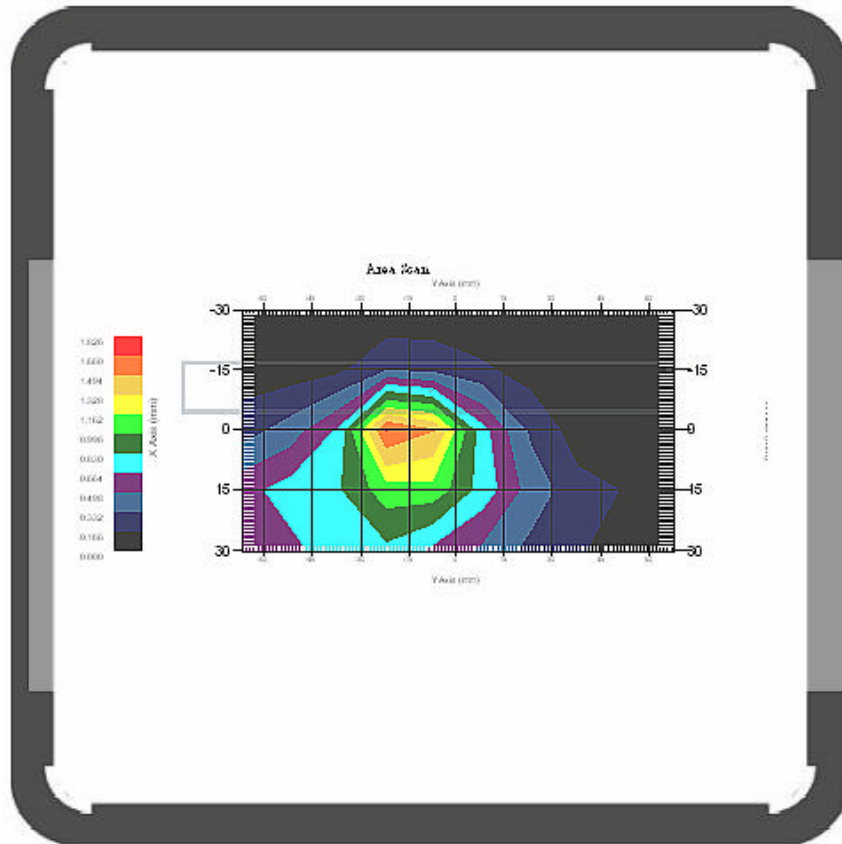
DUT Position : Touch
Channel : Low - 1851.25MHz

Power Drift-Start : 0.839 W/kg
Power Drift-Finish: 0.850 W/kg
Power Drift (%) : 1.839



1 gram SAR value : 1.336 W/kg
10 gram SAR value : 0.668 W/kg
Area Scan Peak SAR : 1.444 W/kg
Zoom Scan Peak SAR : 2.662 W/kg

Outline of the EUT on the plot



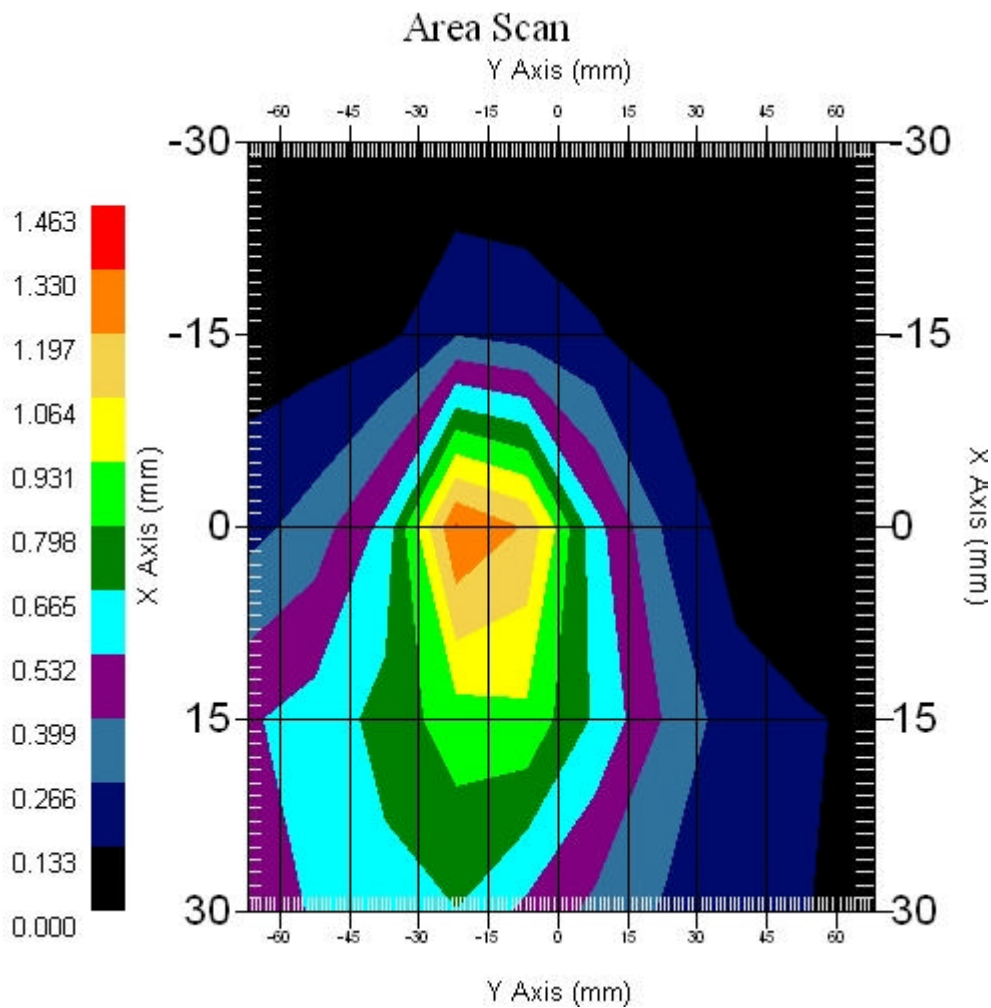
4.5 RTAP 1900 MHz, EUT Position: Back

Measurement Data

Crest Factor : 1
Area Scan : 5x10x1 : Measurement x=15mm, y=15mm, z=4mm
Zoom Scan : 5x5x8 : Measurement x=8mm, y=8mm, z=4mm

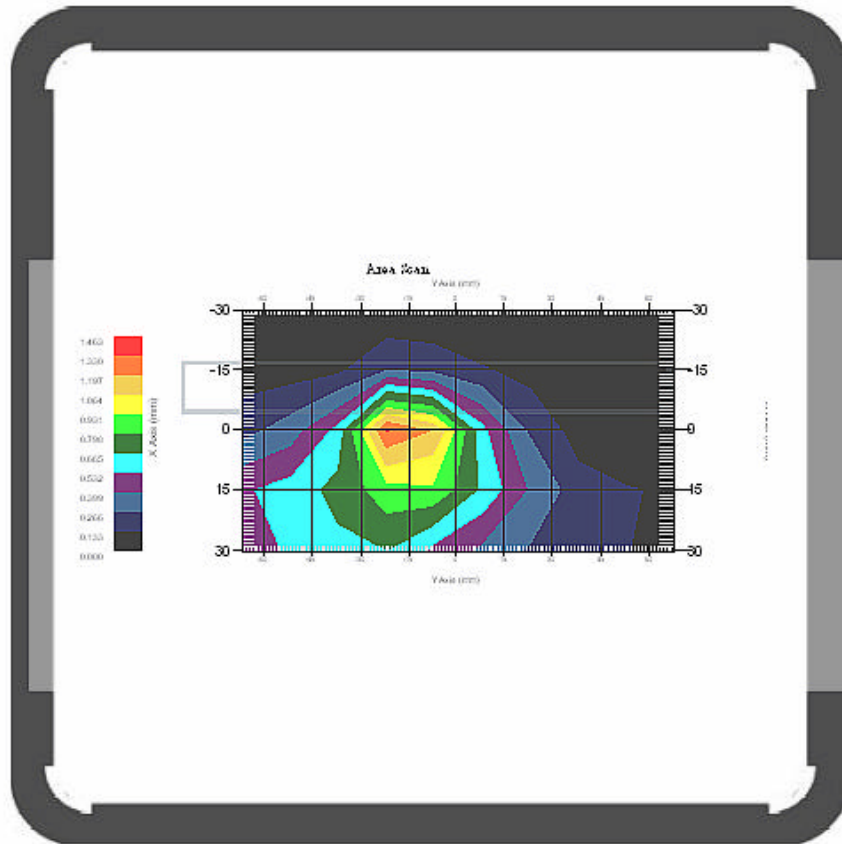
DUT Position : Touch
Channel : Mid - 1880MHz

Power Drift-Start : 0.918 W/kg
Power Drift-Finish: 0.910 W/kg
Power Drift (%) : -0.925



1 gram SAR value : 1.330 W/kg
10 gram SAR value : 0.699 W/kg
Area Scan Peak SAR : 1.333 W/kg
Zoom Scan Peak SAR : 2.542 W/kg

Outline of the EUT on the plot



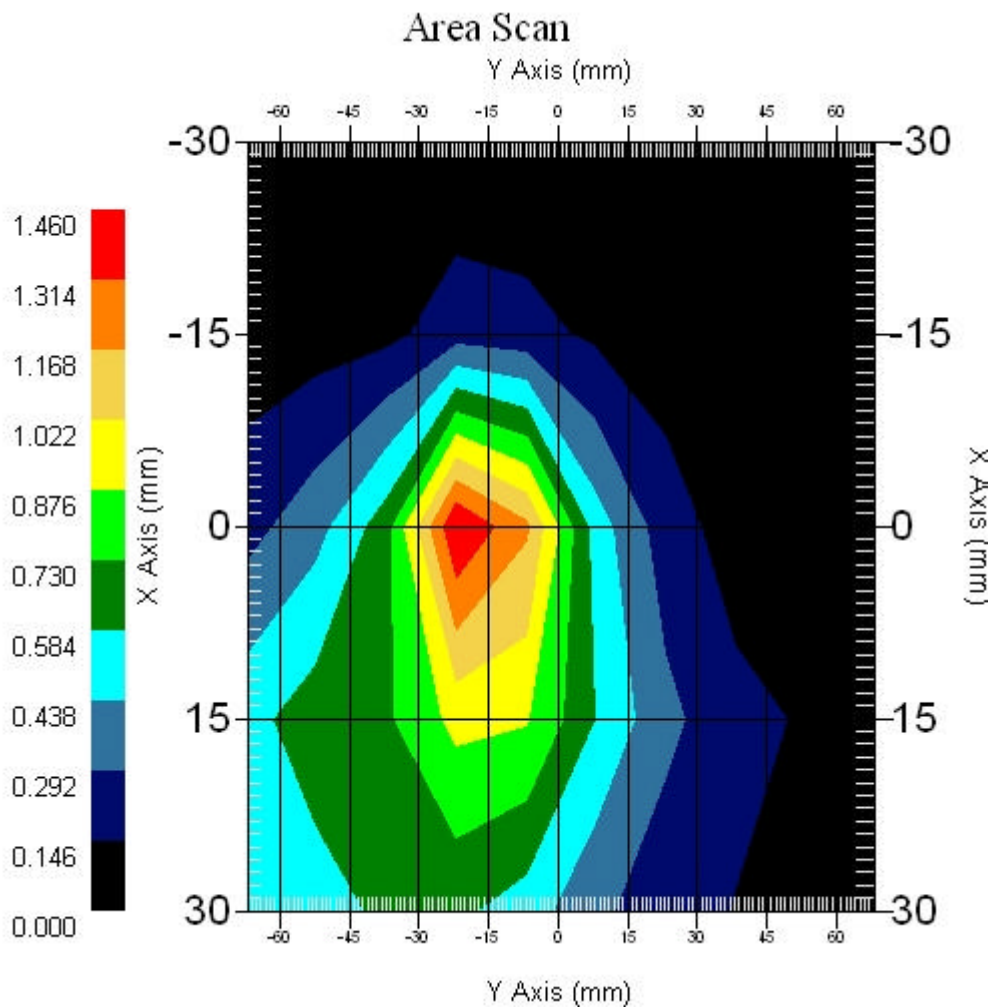
4.6 RTAP 1900 MHz, EUT Position: Back

Measurement Data

Crest Factor : 1
Area Scan : 5x10x1 : Measurement x=15mm, y=15mm, z=4mm
Zoom Scan : 5x5x8 : Measurement x=8mm, y=8mm, z=4mm

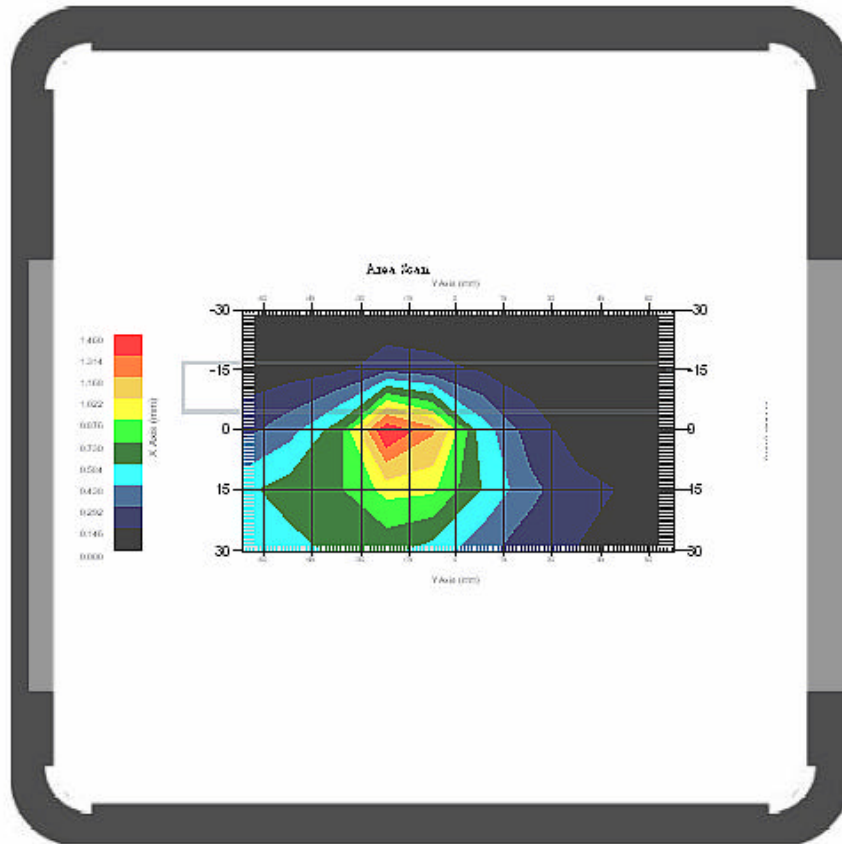
DUT Position : Touch
Channel : High - 1908.75MHz

Power Drift-Start : 0.763 W/kg
Power Drift-Finish: 0.761 W/kg
Power Drift (%) : -0.184



1 gram SAR value : 1.344 W/kg
10 gram SAR value : 0.658 W/kg
Area Scan Peak SAR : 1.457 W/kg
Zoom Scan Peak SAR : 2.782 W/kg

Outline of the EUT on the plot



4.7 RTAP 1900MHz Z-Axis plot

Frequency: RTAP 1900MHz MHz, EUT Side

SAR-Z Axis
at Hotspot x:0.20 y:22.80

