

Appendix C

SAR System Validation Data

of

Product Name

Notebook Personal Computer

Model

W130

1 835 MHz System Validation Data

Report Date : 23-Nov-2006
Measurement Date : 23-Nov-2006

Product Data

Device Name : Dipole-835
Serial No. : Validation
Type : Dipole
Model : Standard
Frequency : 835.00 MHz
Max. Transmit Pwr : 1 W
Drift Time : 0 min(s)
Length : 161 mm
Width : 3.6 mm
Depth : 89.8 mm
Antenna Type : Internal
Power Drift-Start : 9.987 W/kg
Power Drift-Finish: 9.998 W/kg
Power Drift (%) : -0.110

Phantom Data

Name : APREL-Uni
Type : Uni-Phantom
Size (mm) : 280 x 280 x 200
Location : Center

Tissue Data

Type : HEAD
Serial No. : 835HEAD
Frequency : 835.00 MHz
Last Calib. Date : 23-Nov-2006
Temperature : 22.20 °C
Ambient Temp. : 22.30 °C
Humidity : 49.00 RH%
Epsilon : 43.31 F/m
Sigma : 0.98 S/m
Density : 1000.00 kg/cu. m

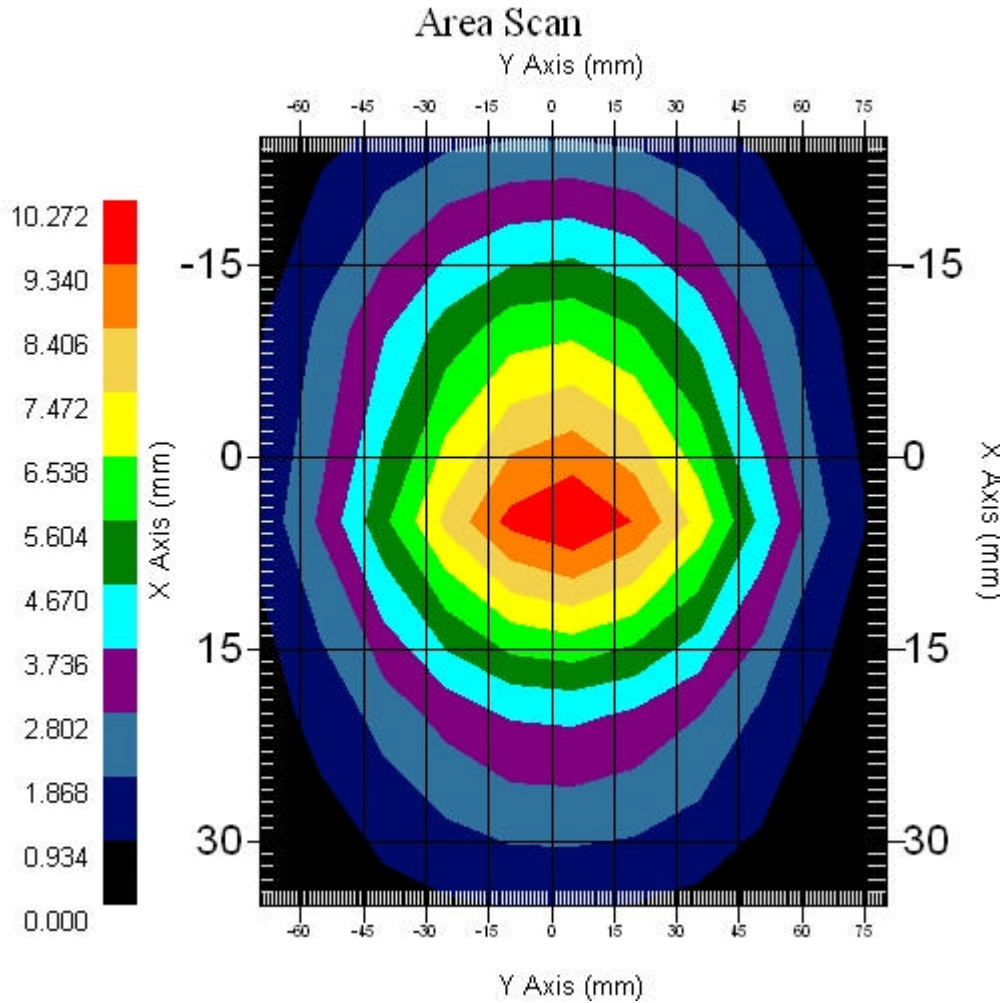
Probe Data

Name : E-field Probe
Model : ALS-E-020
Type : E-Field Triangle
Serial No. : 266
Last Calib. Date : 22-Jun-2006
Frequency : 835.00 MHz
Duty Cycle Factor: 1
Conversion Factor: 6.6
Probe Sensitivity: 1.20 1.20 1.20 $\mu\text{V}/(\text{V}/\text{m})^2$
Compression Point: 95.00 mV
Offset : 1.56 mm

Measurement Data

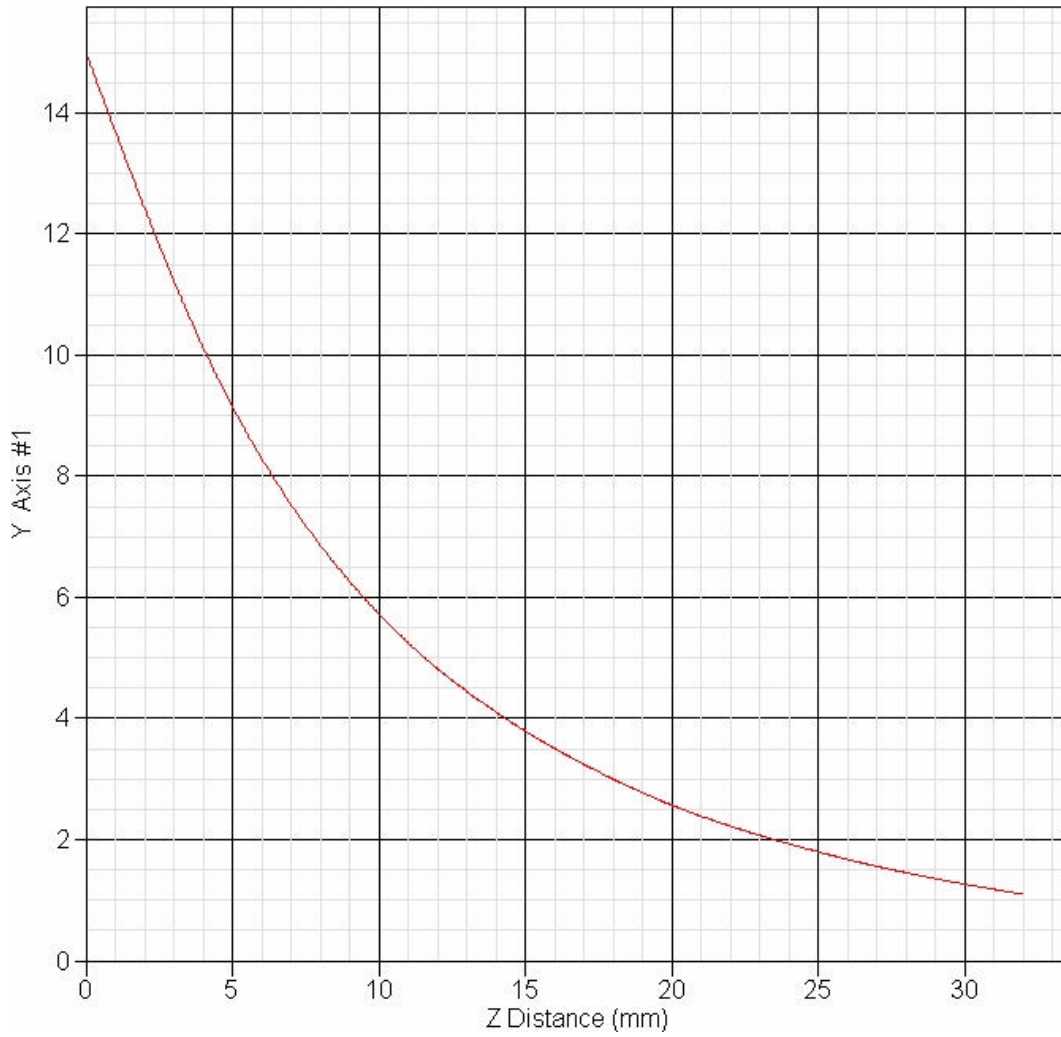
Crest Factor : 1
Tissue Temp. : 22.20 °C
Ambient Temp. : 22.30 °C
Area Scan : 5x11x1 : Measurement x=15mm, y=15mm, z=4mm
Zoom Scan : 5x5x8 : Measurement x=8mm, y=8mm, z=4mm

Channel : Mid - 835MHz



1 gram SAR value : 9.431 W/kg
10 gram SAR value : 5.681 W/kg
Area Scan Peak SAR : 10.272 W/kg
Zoom Scan Peak SAR : 15.013 W/kg

SAR-Z Axis
at Hotspot x:5.30 y:2.80



2 1900 MHz System Validation Data

Report Date : 23-Nov-2006
Measurement Date : 23-Nov-2006

Product Data

Device Name : Dipole-1900
Serial No. : Validation
Type : Dipole
Model : Standard
Frequency : 1900.00 MHz
Max. Transmit Pwr : 1 W
Drift Time : 0 min(s)
Length : 68 mm
Width : 3.6 mm
Depth : 39.5 mm
Antenna Type : Internal
Power Drift-Start : 45.525 W/kg
Power Drift-Finish: 45.219 W/kg
Power Drift (%) : -0.672

Phantom Data

Name : APREL-Uni
Type : Uni-Phantom
Size (mm) : 280 x 280 x 200
Location : Center

Tissue Data

Type : HEAD
Serial No. : 1900HEAD
Frequency : 1900.00 MHz
Last Calib. Date : 23-Nov-2006
Temperature : 22.20 °C
Ambient Temp. : 22.30 °C
Humidity : 49.00 RH%
Epsilon : 40.35 F/m
Sigma : 1.38 S/m
Density : 1000.00 kg/cu. m

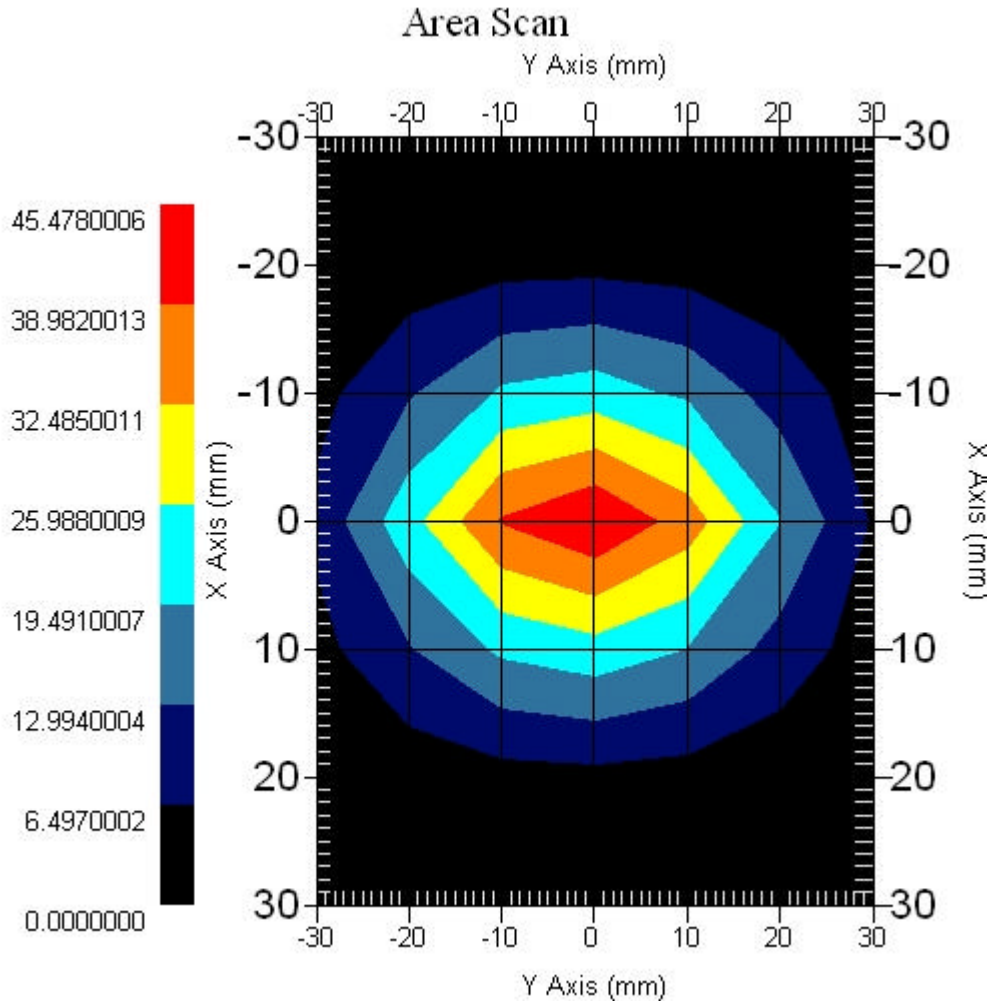
Probe Data

Name : E-field Probe
Model : ALS-E-020
Type : E-Field Triangle
Serial No. : 266
Last Calib. Date : 22-Jun-2006
Frequency : 1900.00 MHz
Duty Cycle Factor: 1
Conversion Factor: 5.22
Probe Sensitivity: 1.20 1.20 1.20 $\mu\text{V}/(\text{V}/\text{m})^2$
Compression Point: 95.00 mV
Offset : 1.56 mm

Measurement Data

Crest Factor : 1
Tissue Temp. : 22.20 °C
Ambient Temp. : 22.30 °C
Area Scan : 7x7x1 : Measurement x=10mm, y=10mm, z=4mm
Zoom Scan : 5x5x8 : Measurement x=8mm, y=8mm, z=4mm

Channel : Mid - 1900MHz



1 gram SAR value : 38.711 W/kg
10 gram SAR value : 19.179 W/kg
Area Scan Peak SAR : 45.478 W/kg
Zoom Scan Peak SAR : 74.365 W/kg

SAR-Z Axis
at Hotspot x:0.30 y:-2.20

