

Appendix D

SAR measurement Data (850 & 1900 MHz)

of

Product Name

Notebook Personal Computer

Model

V100



1 SAR measurement Data

SAR Test Report

Report Date : 12-Feb-2007
Measurement Date : 12-Feb-2007

Product Data

Device Name : V100
Type : Other
Frequency : 835.00 MHz
Max. Transmit Pwr : 0.289 W
Drift Time : 0 min(s)
Length : 290 mm
Width : 20 mm
Depth : 5 mm
Antenna Type : Internal

Phantom Data

Name : APREL-Uni
Type : Uni-Phantom
Size (mm) : 280 x 280 x 200
Location : Center

Tissue Data

Type : BODY
Serial No. : 835_Body
Frequency : 835.00 MHz
Last Calib. Date : 12-Feb-2007
Temperature : 21.90 °C
Ambient Temp. : 22.00 °C
Humidity : 46.00 RH%
Epsilon : 55.27 F/m
Sigma : 0.98 S/m
Density : 1000.00 kg/cu. m

Probe Data

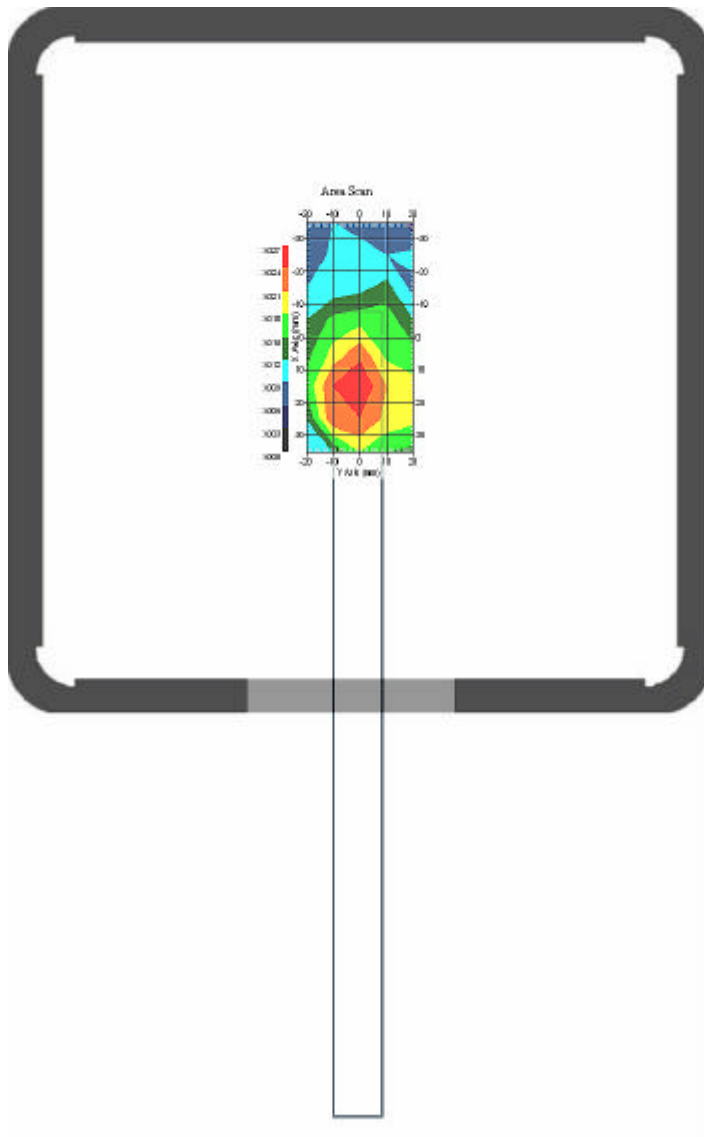
Name : E-field Probe
Model : ALS-E-020
Type : E-Field Triangle
Serial No. : 266
Last Calib. Date : 22-Jun-2006
Frequency : 835.00 MHz
Duty Cycle Factor: 1
Conversion Factor: 6.9
Probe Sensitivity: 1.20 1.20 1.20 $\mu\text{V}/(\text{V}/\text{m})^2$
Compression Point: 95.00 mV
Offset : 1.56 mm

1.1 835 MHz, EUT Position: Bottom (M2)

Measurement Date : 12-Feb-2007
Crest Factor : 1
Area Scan : 8x5x1 : Measurement x=10mm, y=10mm, z=4mm
Zoom Scan : 5x5x8 : Measurement x=8mm, y=8mm, z=4mm

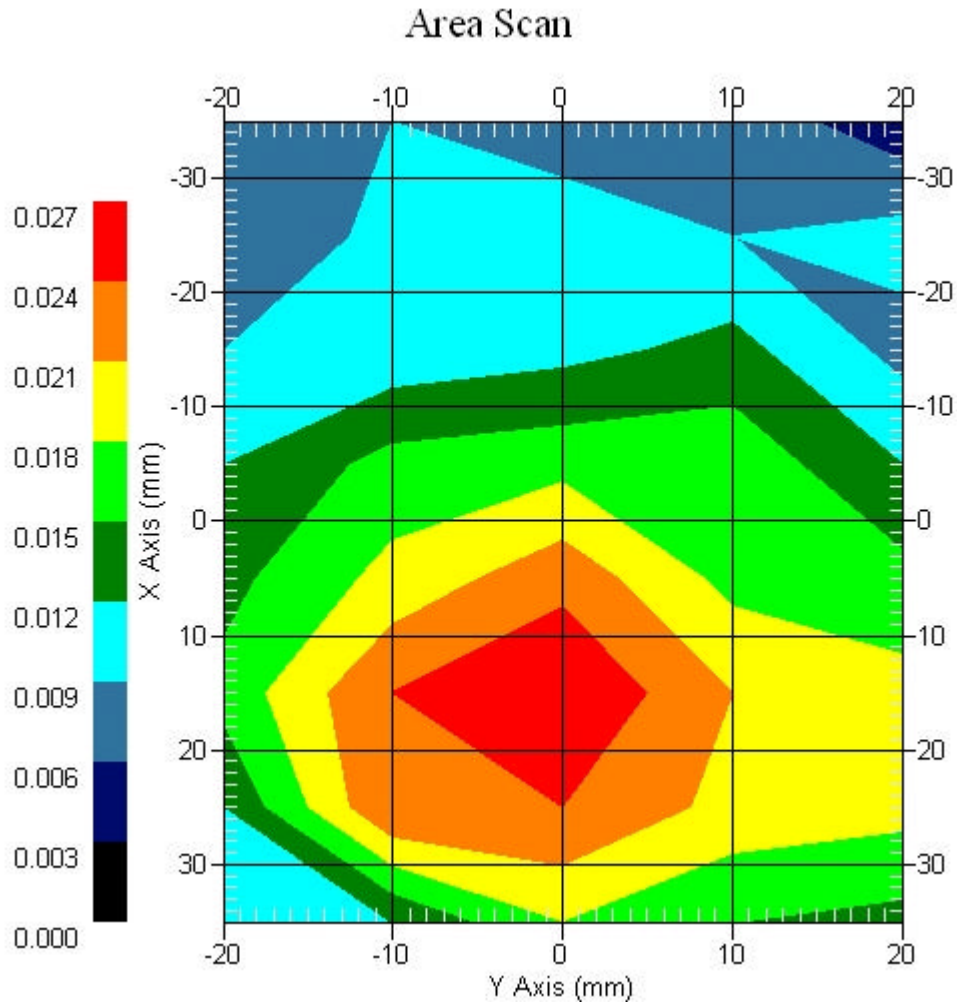
DUT Position : Touch
Channel : Mid

Power Drift-Start : 0.025 W/kg
Power Drift-Finish: 0.025 W/kg
Power Drift (%) : -0.022



1 gram SAR value : 0.023 W/kg
10 gram SAR value : 0.015 W/kg
Area Scan Peak SAR : 0.027 W/kg
Zoom Scan Peak SAR : 0.051 W/kg

Area Scan Plot

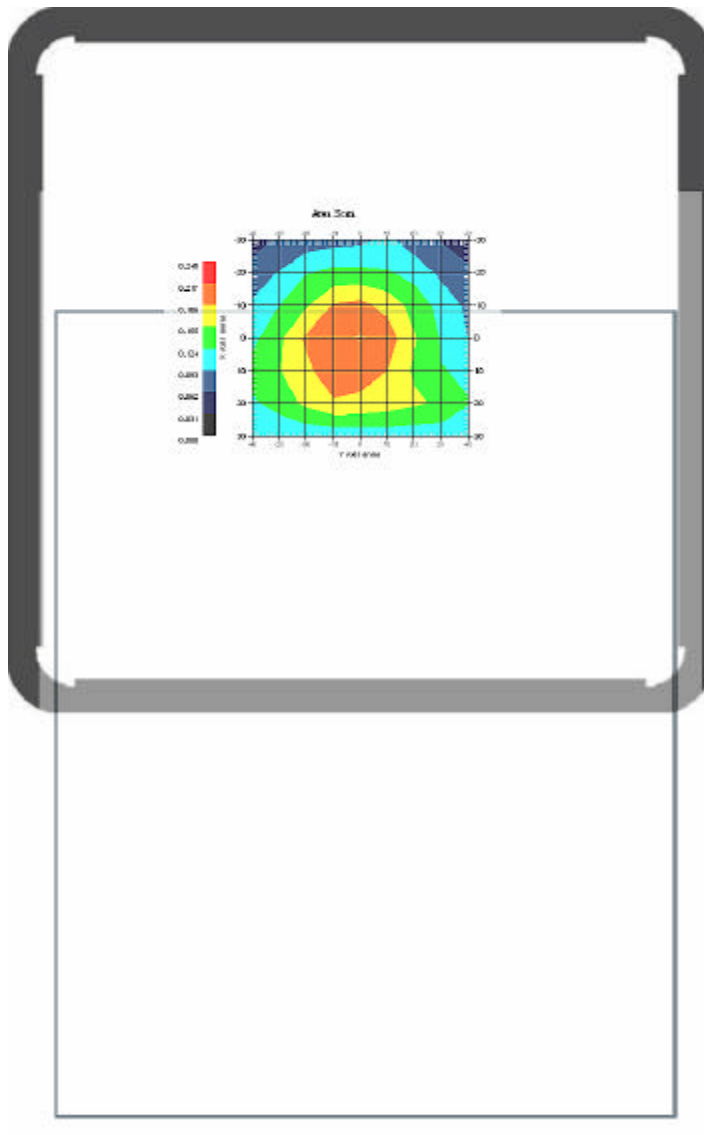


1.2 835 MHz, EUT Position: Laptop (M1)

Measurement Date : 12-Feb-2007
Crest Factor : 1
Area Scan : 7x9x1 : Measurement x=10mm, y=10mm, z=4mm
Zoom Scan : 5x5x8 : Measurement x=8mm, y=8mm, z=4mm

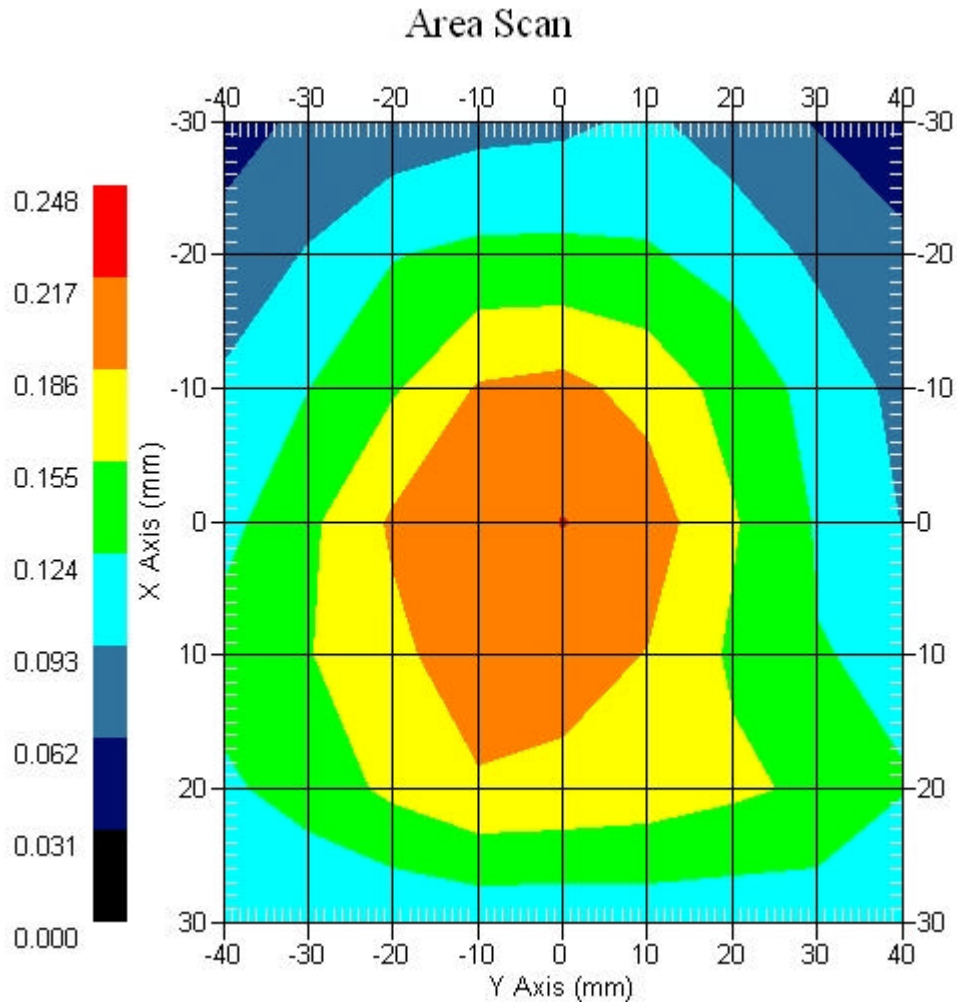
DUT Position : Touch
Channel : Mid

Power Drift-Start : 0.231 W/kg
Power Drift-Finish: 0.226 W/kg
Power Drift (%) : -2.017



1 gram SAR value : 0.219 W/kg
10 gram SAR value : 0.147 W/kg
Area Scan Peak SAR : 0.218 W/kg
Zoom Scan Peak SAR : 0.310 W/kg

Area Scan Plot

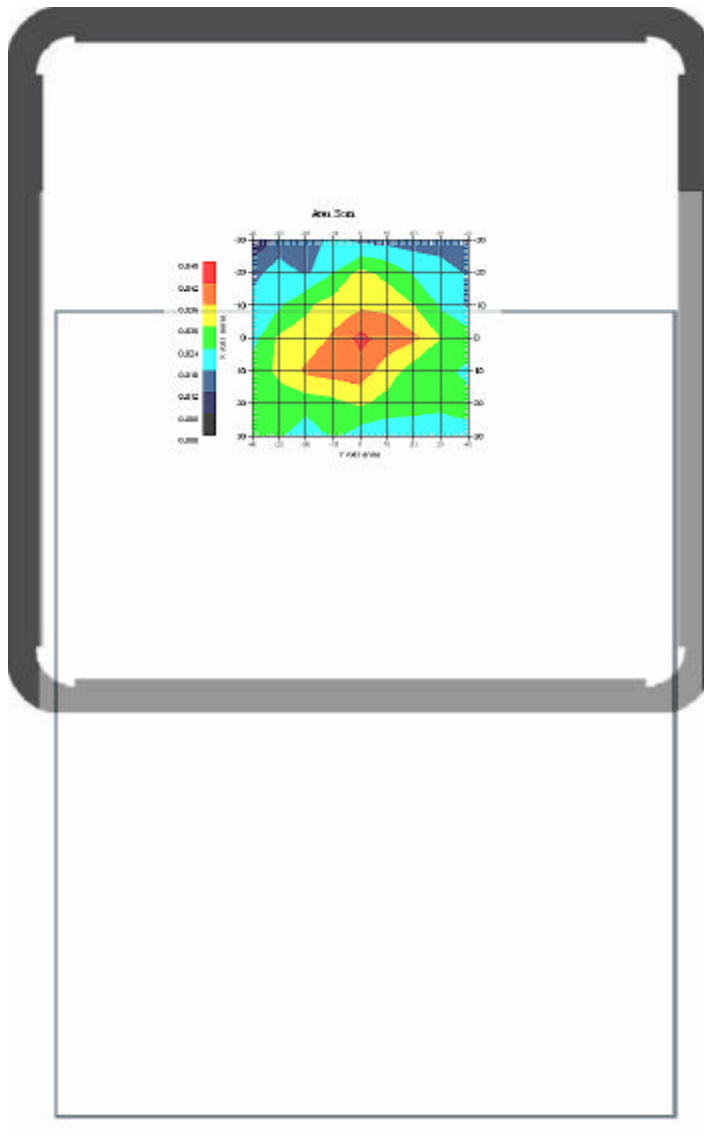


1.3 835 MHz, EUT Position: Laptop (M1)

Measurement Date : 12-Feb-2007
Crest Factor : 1
Area Scan : 7x9x1 : Measurement x=10mm, y=10mm, z=4mm
Zoom Scan : 5x5x8 : Measurement x=8mm, y=8mm, z=4mm

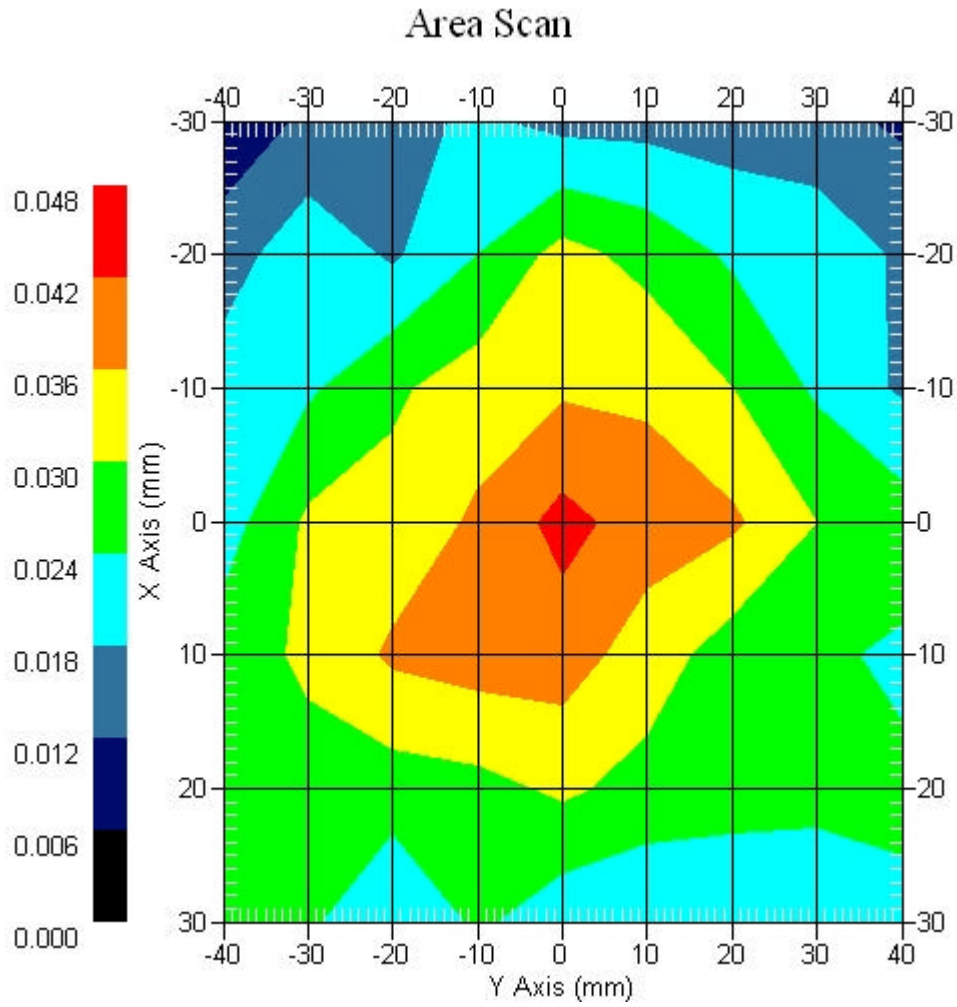
DUT Position : Touch
Channel : High

Power Drift-Start : 0.039 W/kg
Power Drift-Finish: 0.040 W/kg
Power Drift (%) : 2.569



1 gram SAR value : 0.040 W/kg
10 gram SAR value : 0.028 W/kg
Area Scan Peak SAR : 0.044 W/kg
Zoom Scan Peak SAR : 0.050 W/kg

Area Scan Plot

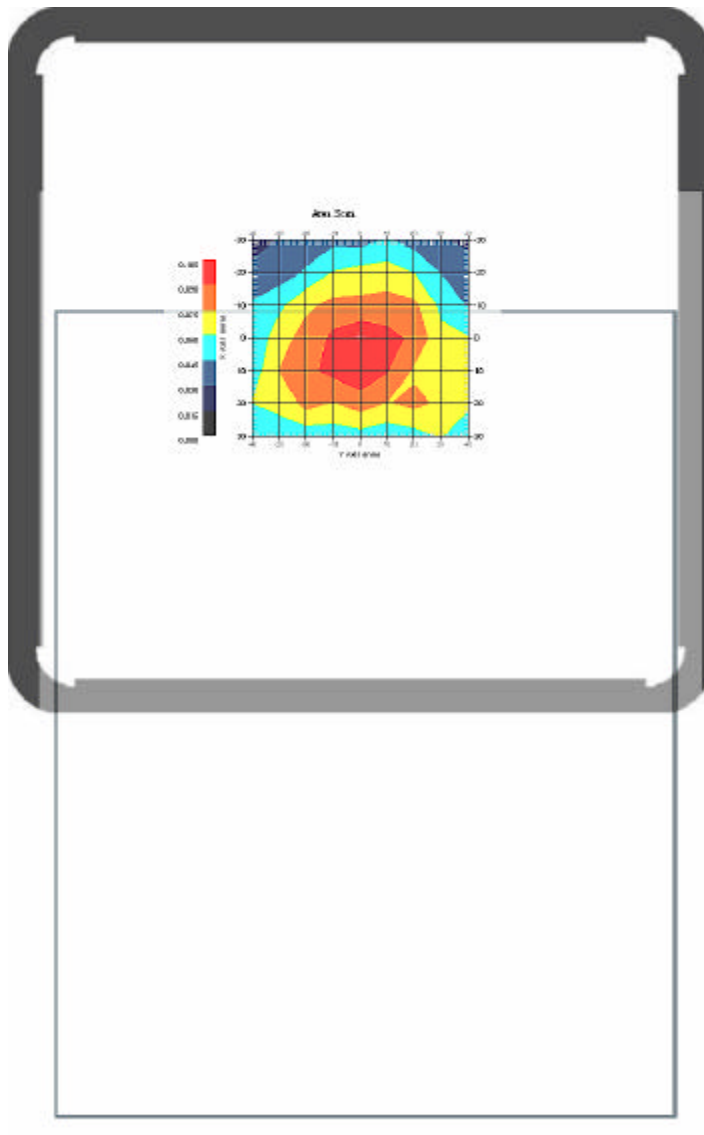


1.4 835 MHz, EUT Position: Laptop (M1)

Measurement Date : 12-Feb-2007
Crest Factor : 1
Area Scan : 7x9x1 : Measurement x=10mm, y=10mm, z=4mm
Zoom Scan : 5x5x8 : Measurement x=8mm, y=8mm, z=4mm

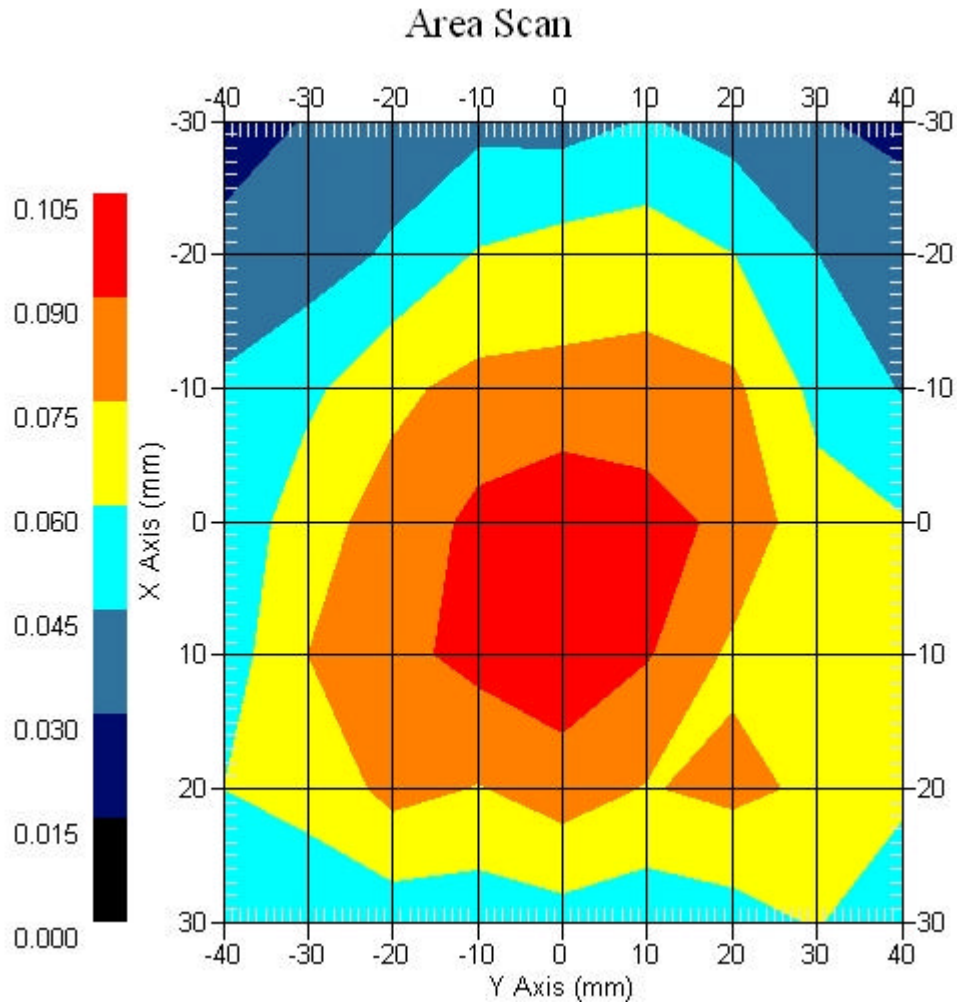
DUT Position : Touch
Channel : Low

Power Drift-Start : 0.102 W/kg
Power Drift-Finish: 0.099 W/kg
Power Drift (%) : -3.381



1 gram SAR value : 0.098 W/kg
10 gram SAR value : 0.072 W/kg
Area Scan Peak SAR : 0.102 W/kg
Zoom Scan Peak SAR : 0.150 W/kg

Area Scan Plot

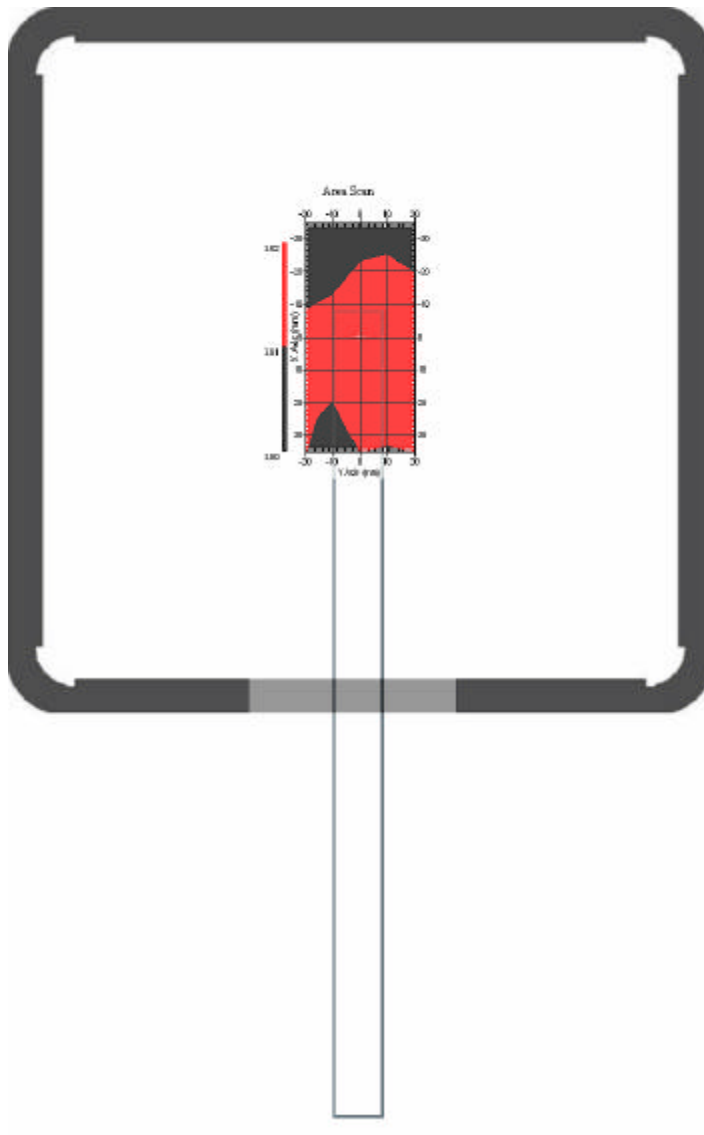


1.5 835 MHz, EUT Position: Top (M3)

Measurement Date : 12-Feb-2007
Crest Factor : 1
Area Scan : 8x5x1 : Measurement x=10mm, y=10mm, z=4mm
Zoom Scan : 5x5x8 : Measurement x=8mm, y=8mm, z=4mm

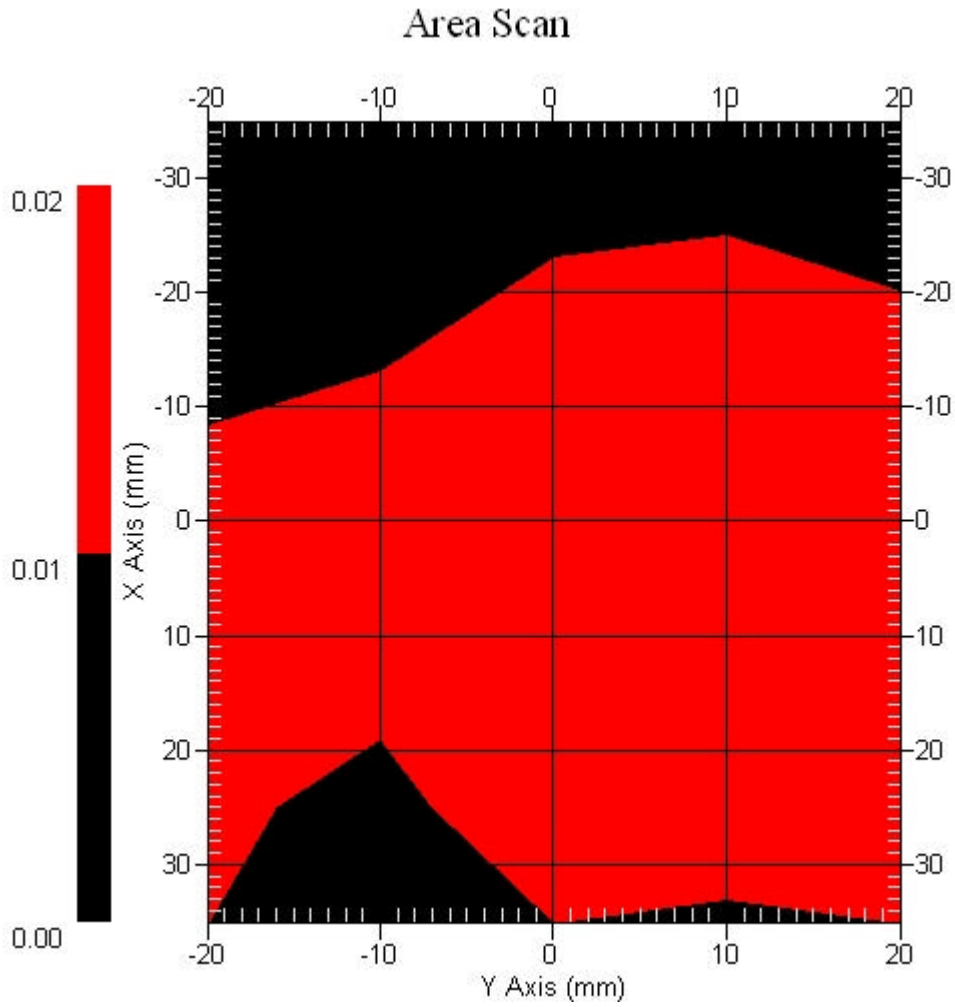
DUT Position : Touch
Channel : Mid

Power Drift-Start : 0.017 W/kg
Power Drift-Finish: 0.017 W/kg
Power Drift (%) : -1.601



1 gram SAR value : 0.016 W/kg
10 gram SAR value : 0.012 W/kg
Area Scan Peak SAR : 0.020 W/kg
Zoom Scan Peak SAR : 0.030 W/kg

Area Scan Plot

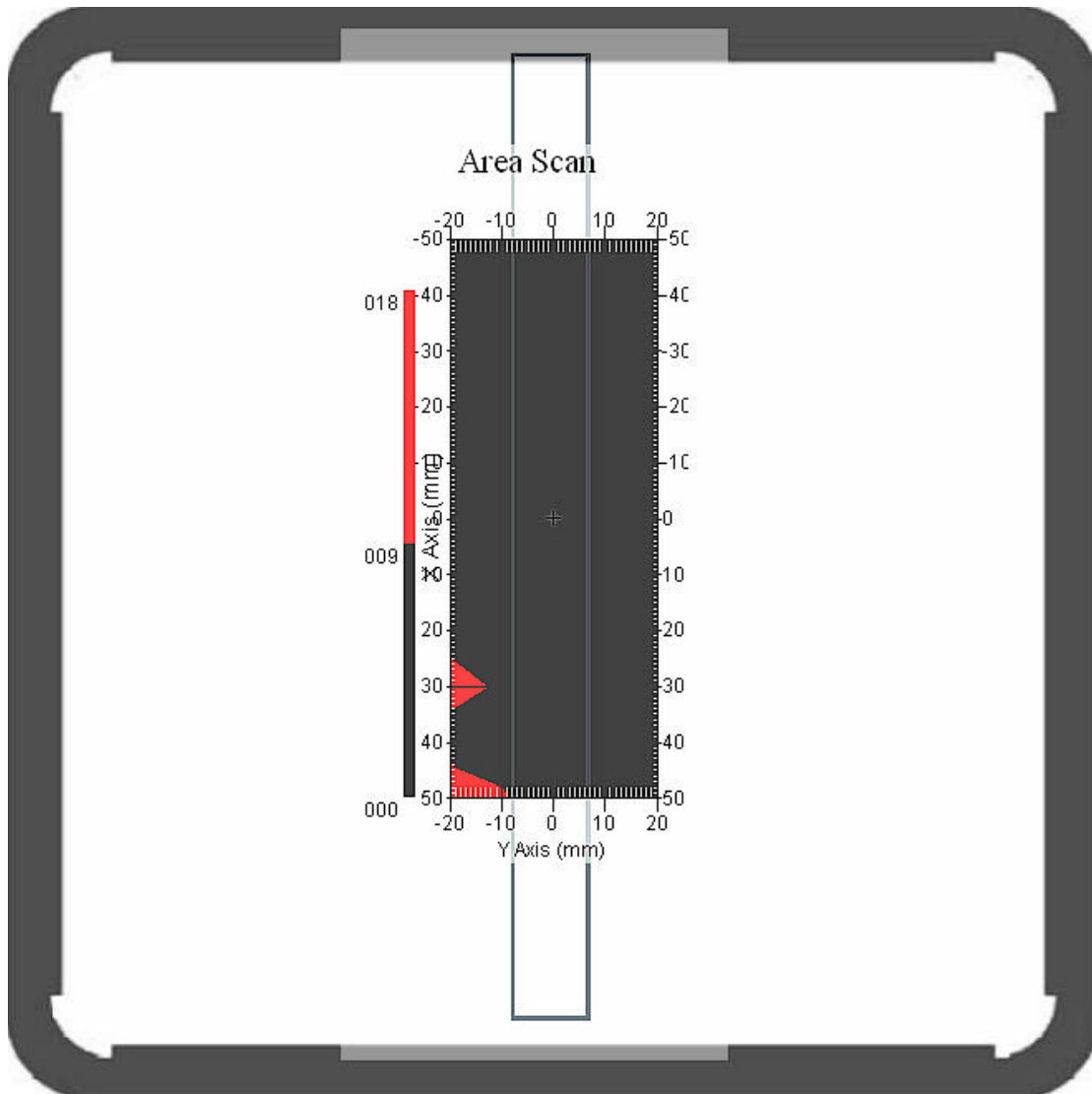


1.6 835 MHz, EUT Position: Side-L (M5)

Measurement Date : 12-Feb-2007
Crest Factor : 1
Area Scan : 11x5x1 : Measurement x=10mm, y=10mm, z=4mm
Zoom Scan : 5x5x8 : Measurement x=8mm, y=8mm, z=4mm

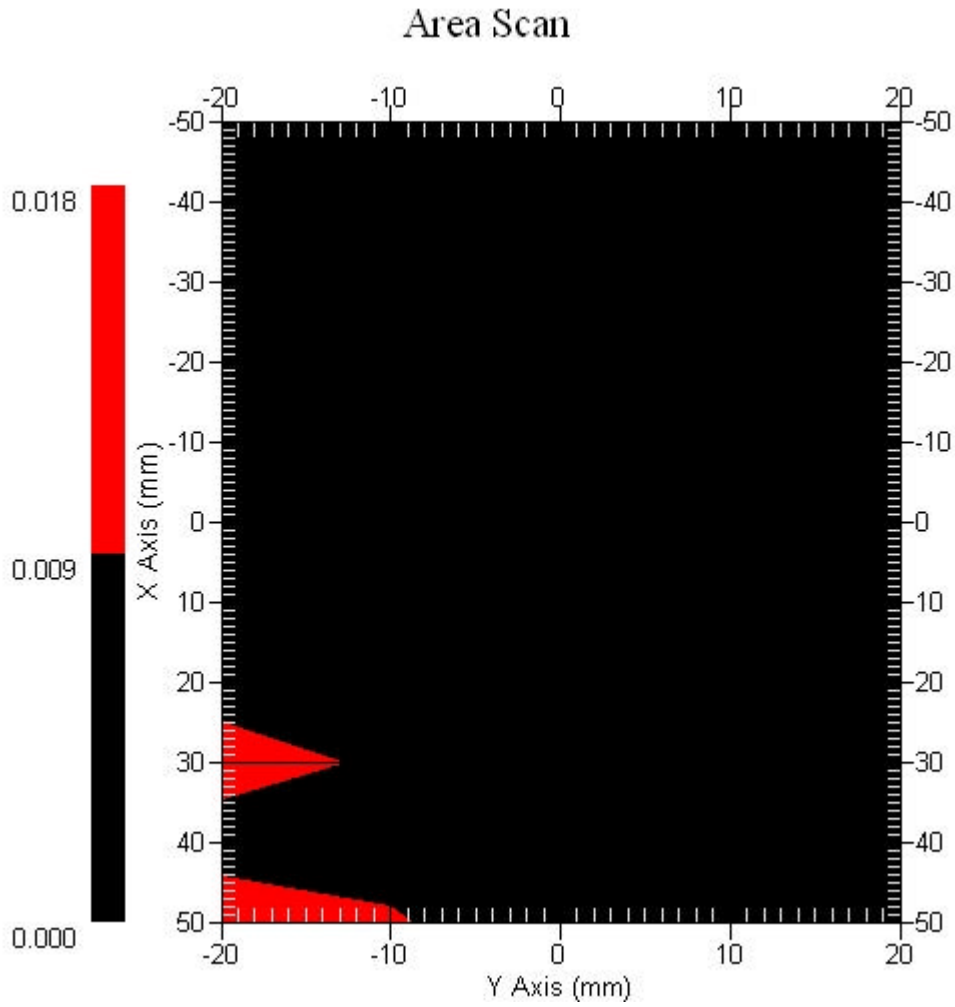
DUT Position : Touch
Channel : Mid

Power Drift-Start : 0.005 W/kg
Power Drift-Finish: 0.005 W/kg
Power Drift (%) : 1.763



1 gram SAR value : 0.007 W/kg
10 gram SAR value : 0.005 W/kg
Area Scan Peak SAR : 0.017 W/kg
Zoom Scan Peak SAR : 0.031 W/kg

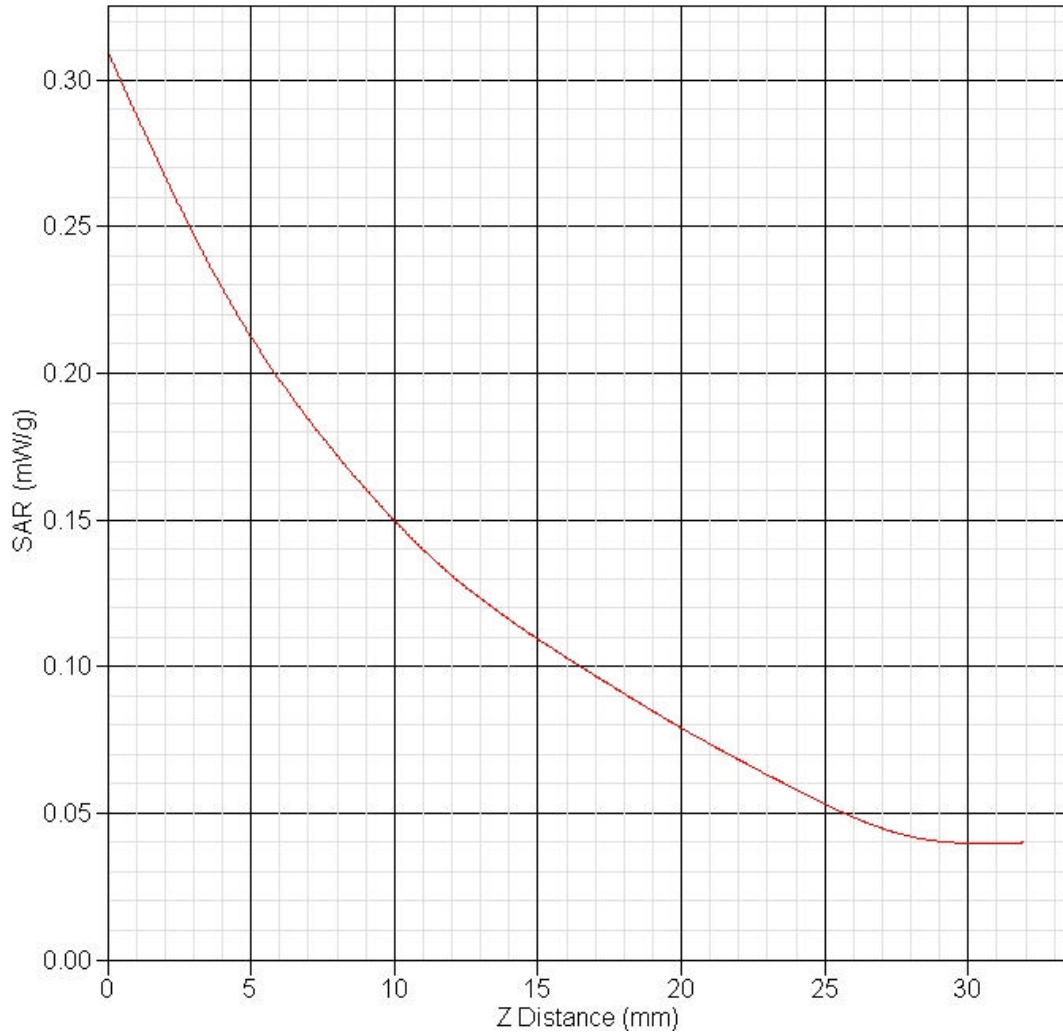
Area Scan Plot



1.11 835MHz Z-Axis plot

Frequency: 835MHz, EUT Position Laptop (M1)

SAR-Z Axis
at Hotspot x:0.14 y:-0.15





2 1900 SAR measurement Data

SAR Test Report

Report Date : 12-Feb-2007
Measurement Date : 12-Feb-2007

Product Data

Device Name : V100
Type : Other
Frequency : 1900.00 MHz
Max. Transmit Pwr : 0.311 W
Drift Time : 0 min(s)
Length : 290 mm
Width : 20 mm
Depth : 5 mm
Antenna Type : Internal

Phantom Data

Name : APREL-Uni
Type : Uni-Phantom
Size (mm) : 280 x 280 x 200
Location : Center

Tissue Data

Type : BODY
Serial No. : 1900_Body
Frequency : 1900.00 MHz
Last Calib. Date : 12-Feb-2007
Temperature : 21.90 °C
Ambient Temp. : 22.00 °C
Humidity : 46.00 RH%
Epsilon : 53.22 F/m
Sigma : 1.49 S/m
Density : 1000.00 kg/cu. m

Probe Data

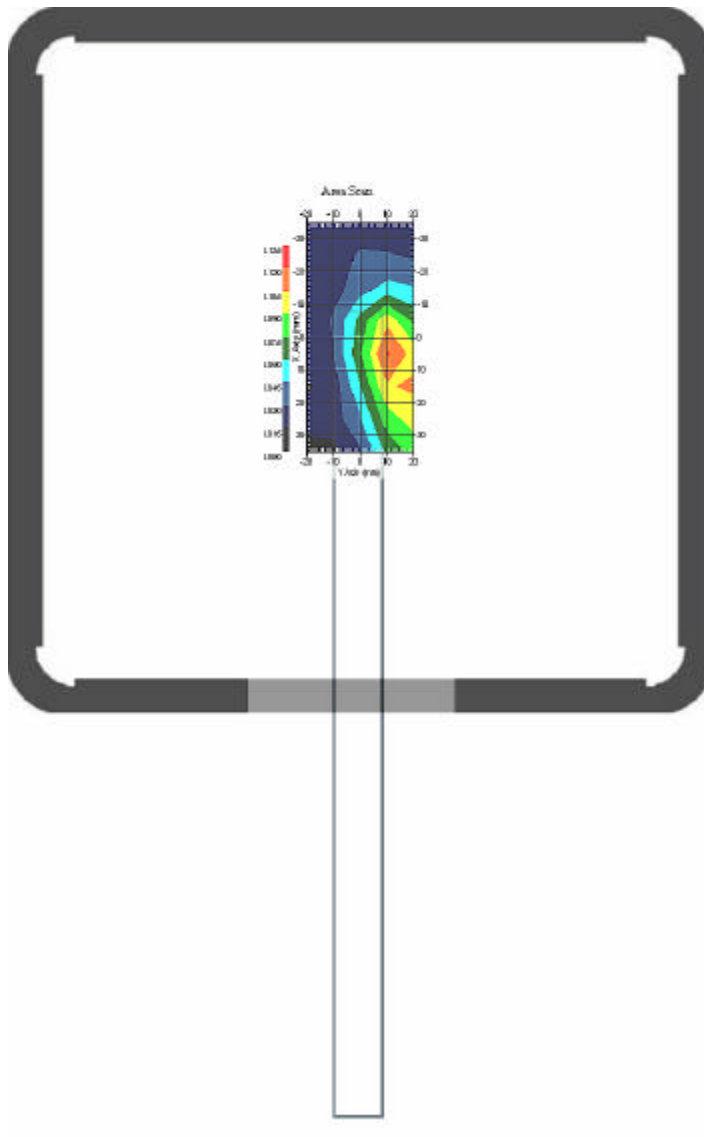
Name : E-field Probe
Model : ALS-E-020
Type : E-Field Triangle
Serial No. : 266
Last Calib. Date : 22-Jun-2006
Frequency : 1900.00 MHz
Duty Cycle Factor: 1
Conversion Factor: 5.41
Probe Sensitivity: 1.20 1.20 1.20 $\mu\text{V}/(\text{V}/\text{m})^2$
Compression Point: 95.00 mV
Offset : 1.56 mm

2.1 1900 MHz, EUT Position: Bottom (M2)

Measurement Date : 12-Feb-2007
Crest Factor : 1
Area Scan : 8x5x1 : Measurement x=10mm, y=10mm, z=4mm
Zoom Scan : 5x5x8 : Measurement x=8mm, y=8mm, z=4mm

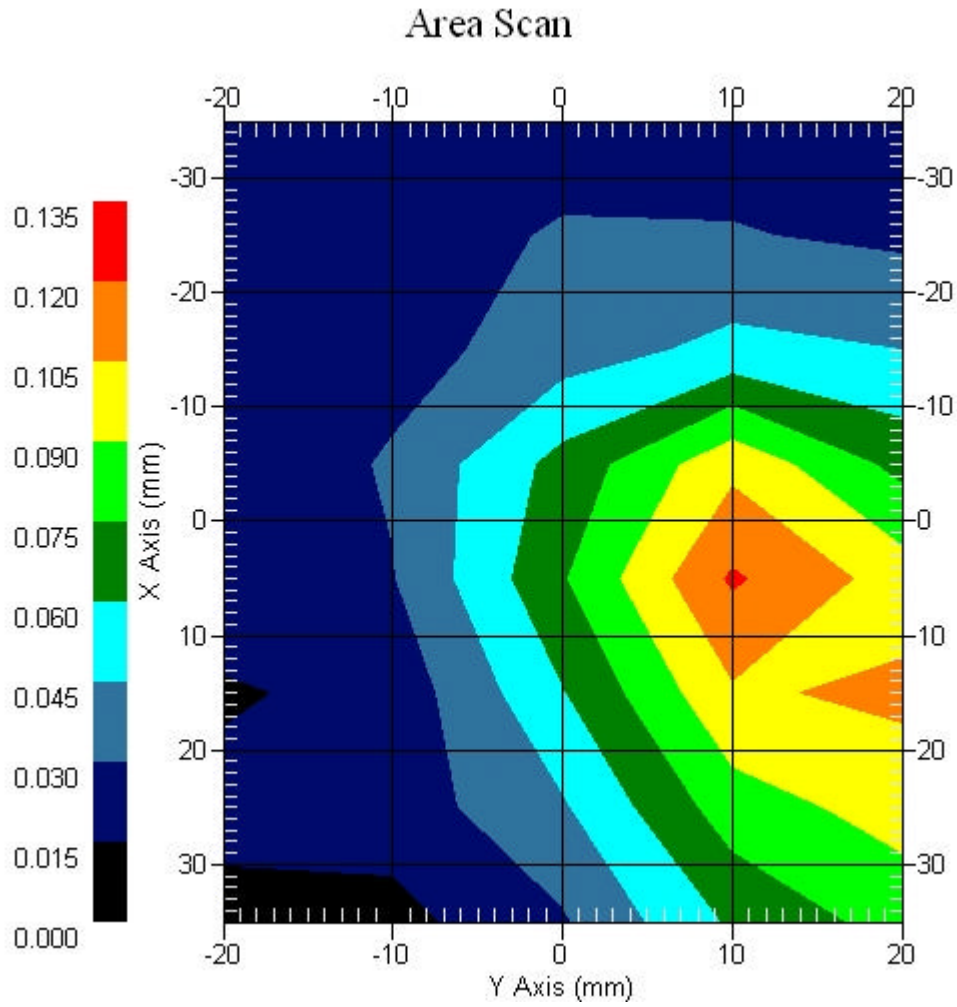
DUT Position : Touch
Channel : High

Power Drift-Start : 0.075 W/kg
Power Drift-Finish: 0.073 W/kg
Power Drift (%) : -3.001



1 gram SAR value : 0.108 W/kg
10 gram SAR value : 0.056 W/kg
Area Scan Peak SAR : 0.122 W/kg
Zoom Scan Peak SAR : 0.200 W/kg

Area Scan Plot

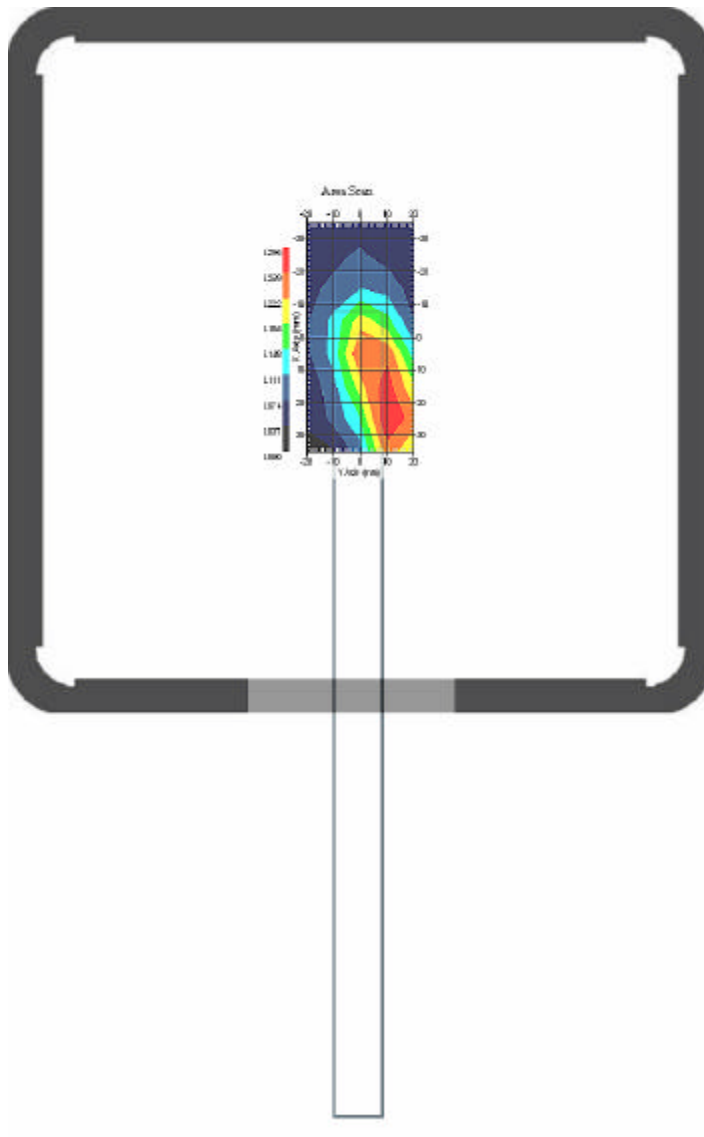


2.2 1900 MHz, EUT Position: Bottom (M2)

Measurement Date : 12-Feb-2007
Crest Factor : 1
Area Scan : 8x5x1 : Measurement x=10mm, y=10mm, z=4mm
Zoom Scan : 5x5x8 : Measurement x=8mm, y=8mm, z=4mm

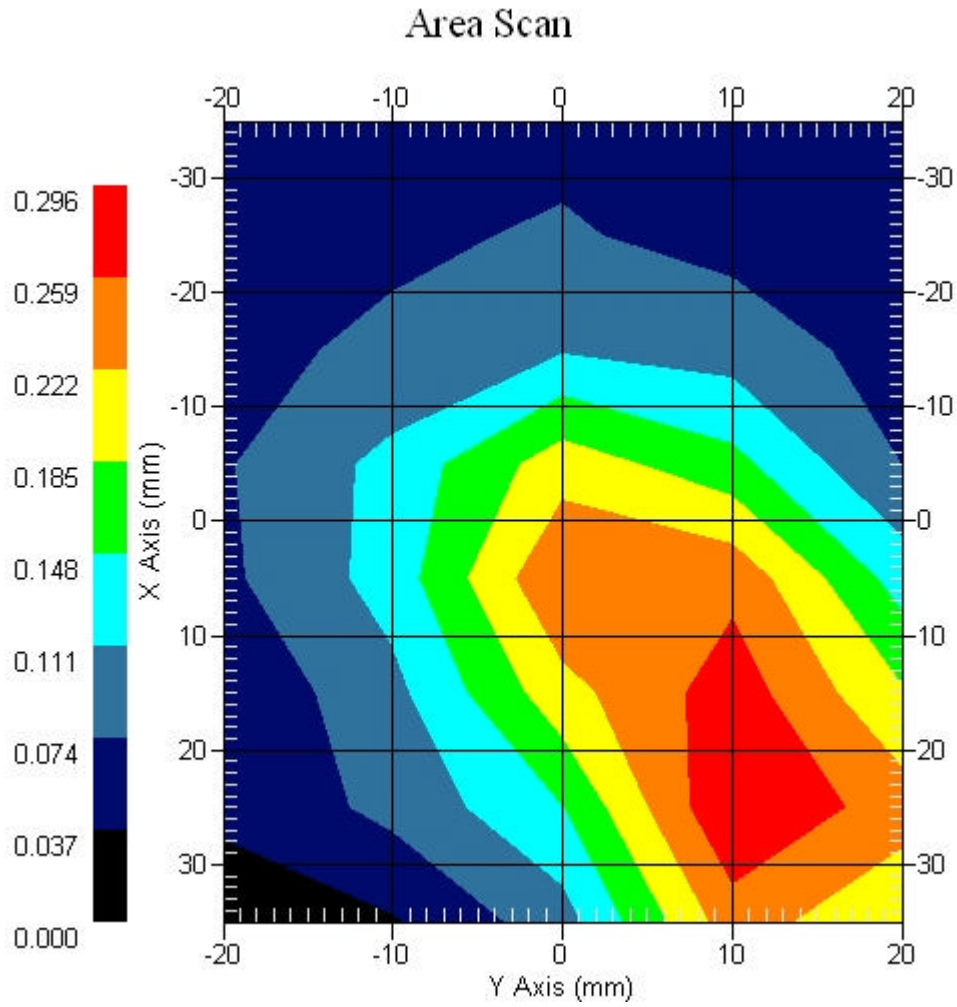
DUT Position : Touch
Channel : Low

Power Drift-Start : 0.240 W/kg
Power Drift-Finish: 0.232 W/kg
Power Drift (%) : -3.334



1 gram SAR value : 0.347 W/kg
10 gram SAR value : 0.184 W/kg
Area Scan Peak SAR : 0.296 W/kg
Zoom Scan Peak SAR : 0.670 W/kg

Area Scan Plot

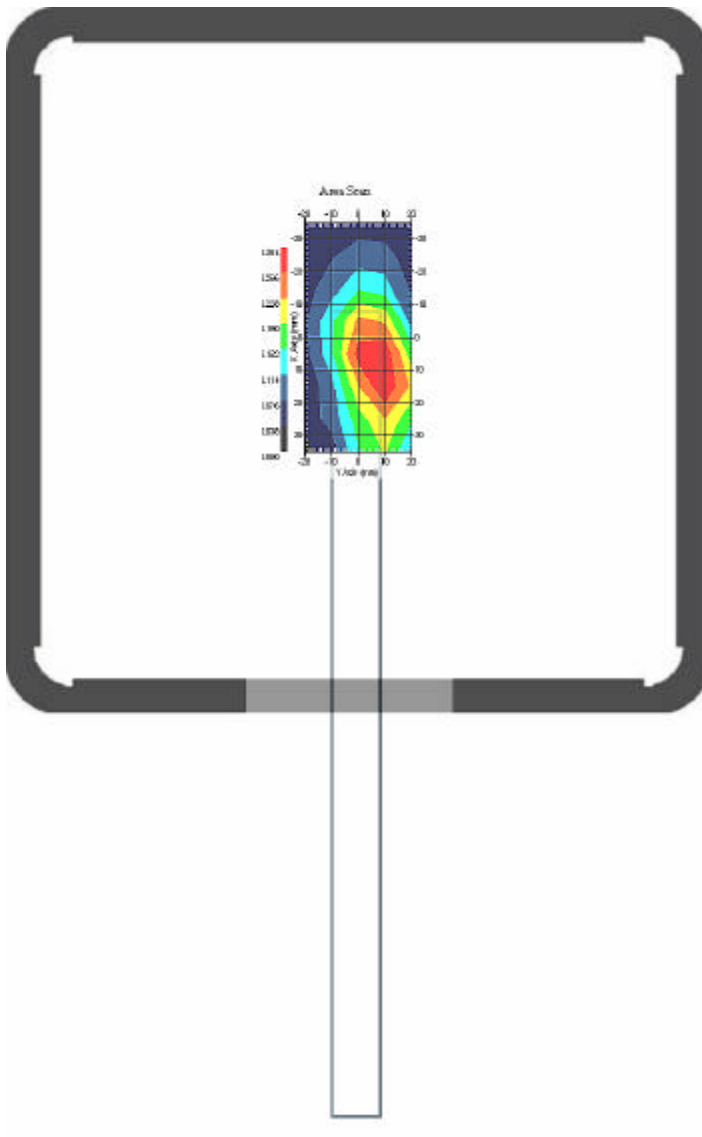


2.3 1900 MHz, EUT Position: Bottom (M2)

Measurement Date : 12-Feb-2007
Crest Factor : 1
Area Scan : 8x5x1 : Measurement x=10mm, y=10mm, z=4mm
Zoom Scan : 5x5x8 : Measurement x=8mm, y=8mm, z=4mm

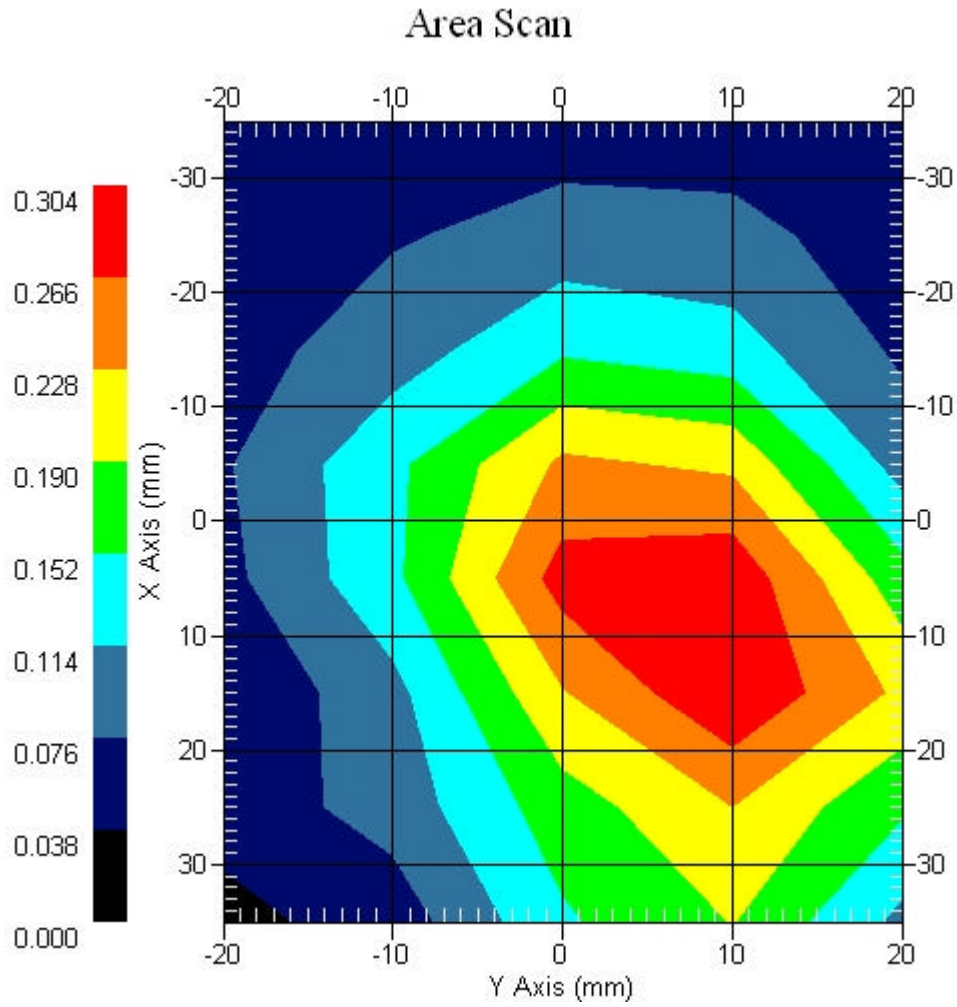
DUT Position : Touch
Channel : Mid

Power Drift-Start : 0.313 W/kg
Power Drift-Finish: 0.309 W/kg
Power Drift (%) : -1.280



1 gram SAR value : 0.324 W/kg
10 gram SAR value : 0.173 W/kg
Area Scan Peak SAR : 0.300 W/kg
Zoom Scan Peak SAR : 0.620 W/kg

Area Scan Plot

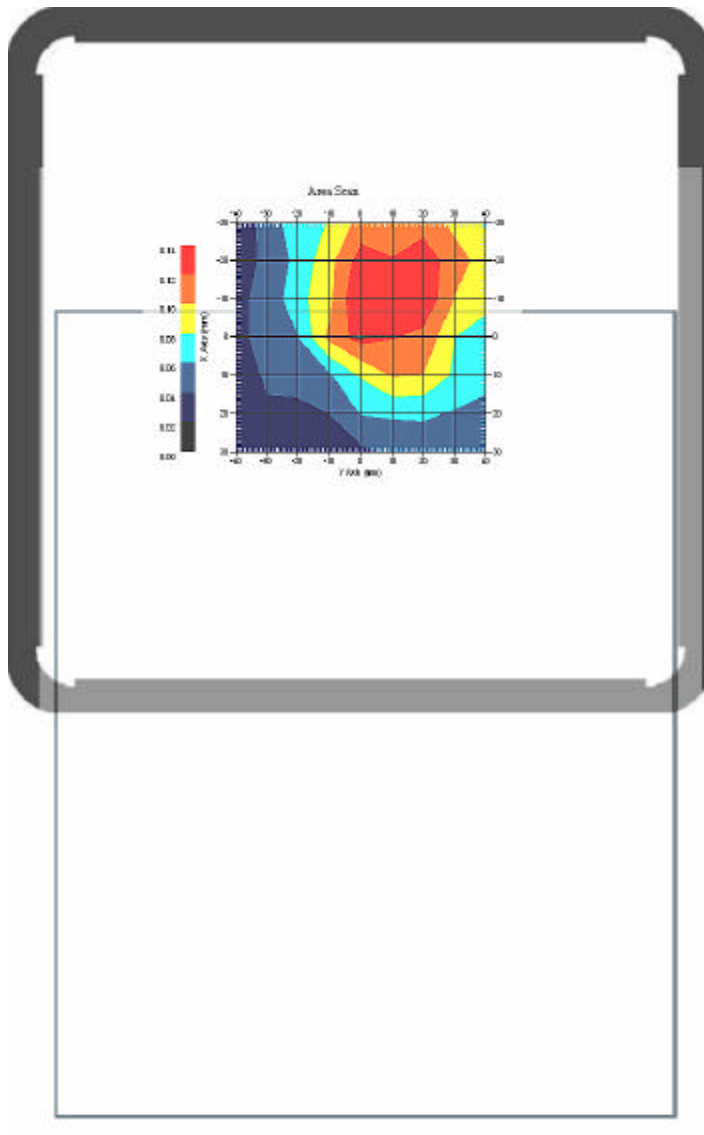


2.4 1900 MHz, EUT Position: Laptop (M1)

Measurement Date : 12-Feb-2007
Crest Factor : 1
Area Scan : 7x9x1 : Measurement x=10mm, y=10mm, z=4mm
Zoom Scan : 5x5x8 : Measurement x=8mm, y=8mm, z=4mm

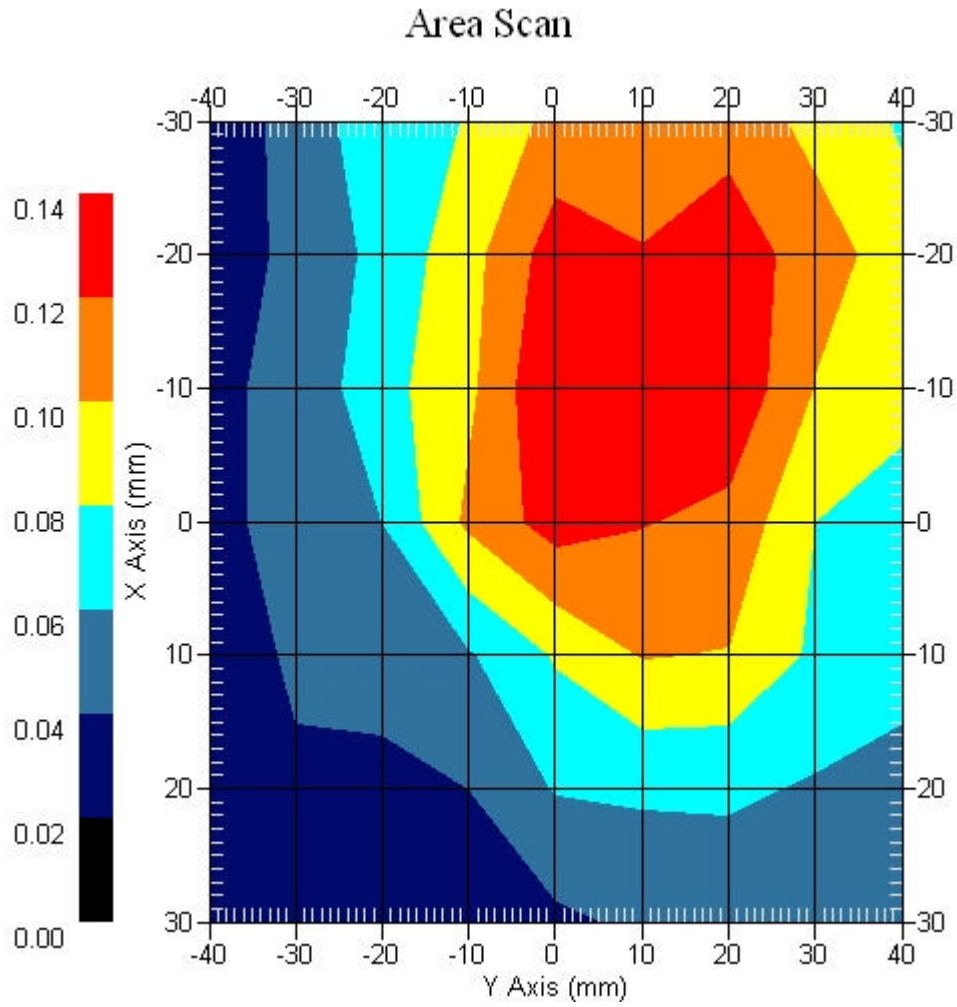
DUT Position : Touch
Channel : High

Power Drift-Start : 0.124 W/kg
Power Drift-Finish: 0.122 W/kg
Power Drift (%) : -1.365



1 gram SAR value : 0.144 W/kg
10 gram SAR value : 0.107 W/kg
Area Scan Peak SAR : 0.140 W/kg
Zoom Scan Peak SAR : 0.230 W/kg

Area Scan Plot

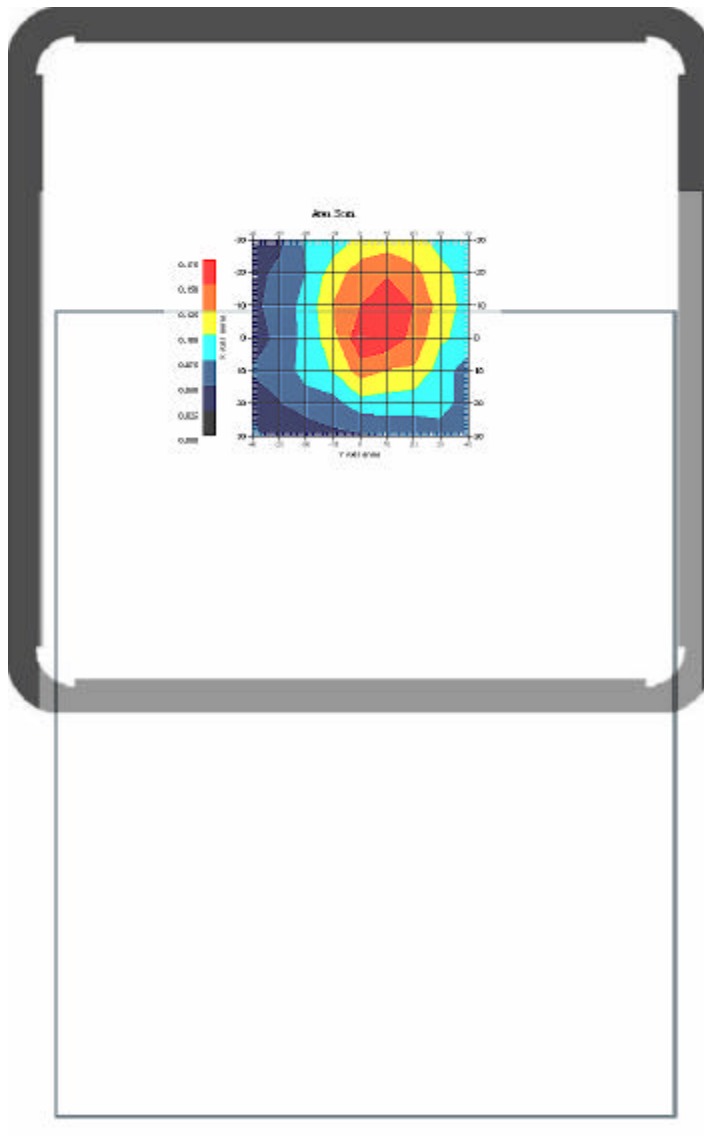


2.5 1900 MHz, EUT Position: Laptop (M1)

Measurement Date : 12-Feb-2007
Crest Factor : 1
Area Scan : 7x9x1 : Measurement x=10mm, y=10mm, z=4mm
Zoom Scan : 5x5x8 : Measurement x=8mm, y=8mm, z=4mm

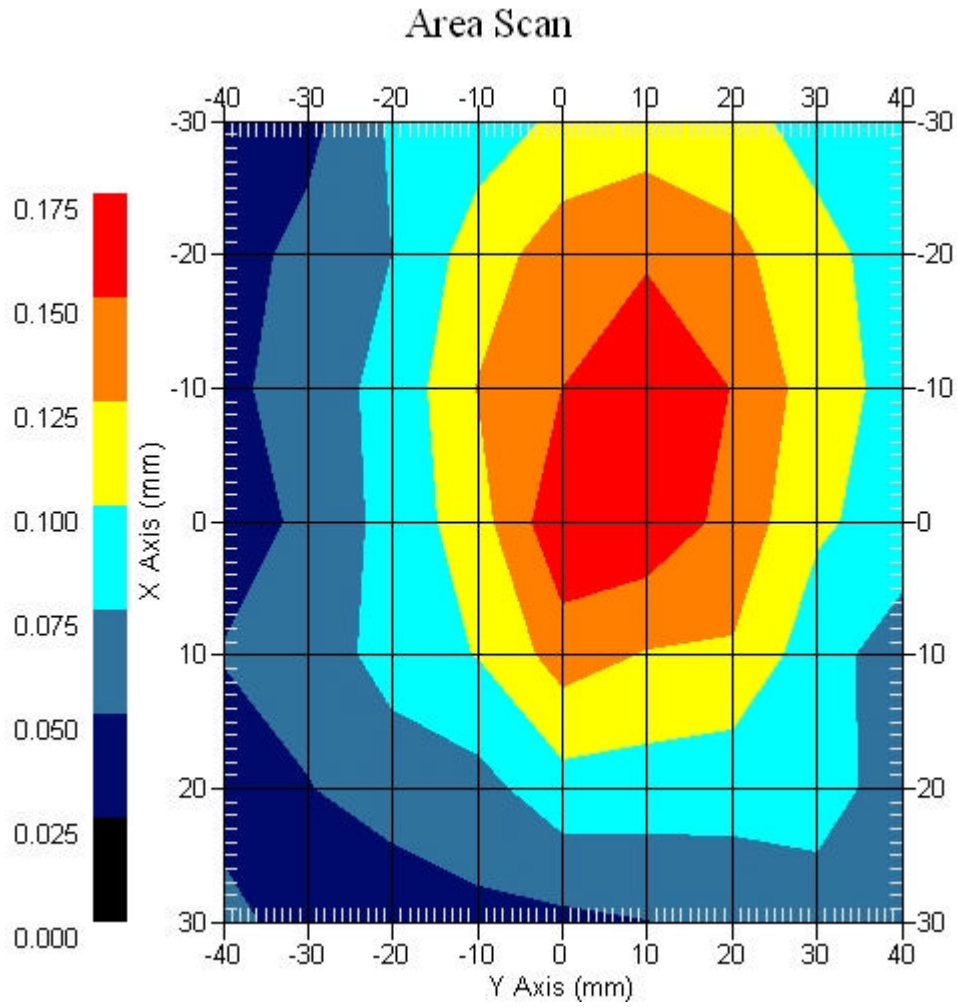
DUT Position : Touch
Channel : Low

Power Drift-Start : 0.164 W/kg
Power Drift-Finish: 0.161 W/kg
Power Drift (%) : -1.831



1 gram SAR value : 0.168 W/kg
10 gram SAR value : 0.106 W/kg
Area Scan Peak SAR : 0.174 W/kg
Zoom Scan Peak SAR : 0.230 W/kg

Area Scan Plot

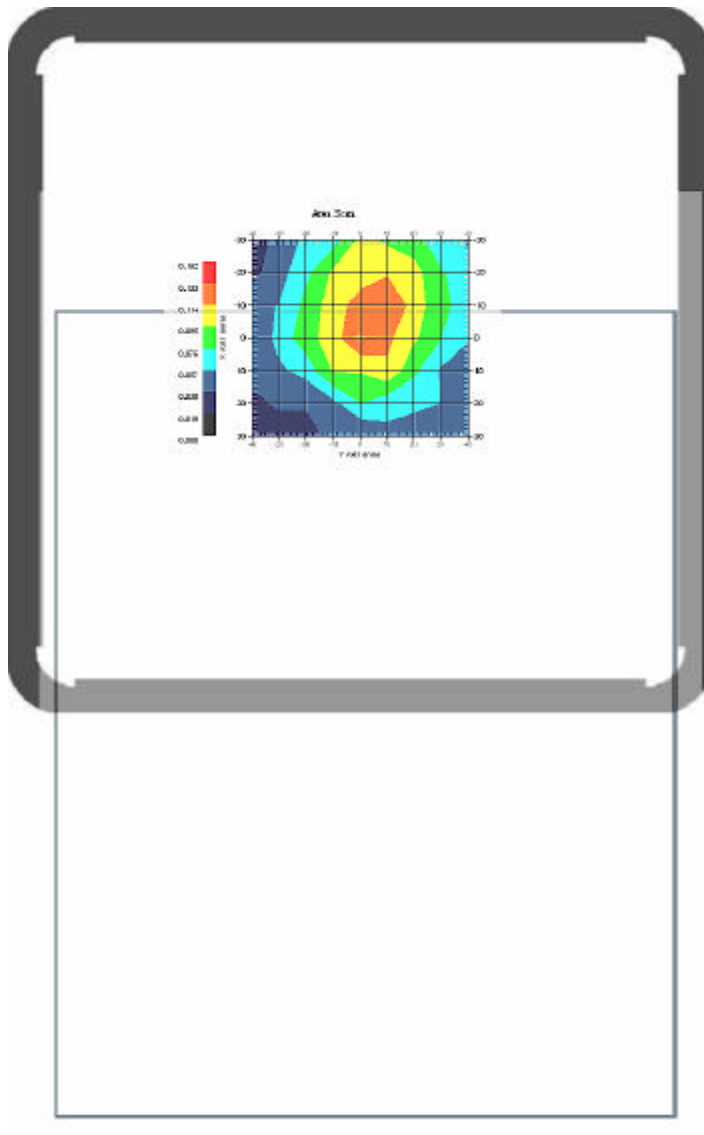


2.6 1900 MHz, EUT Position: Laptop (M1)

Measurement Date : 12-Feb-2007
Crest Factor : 1
Area Scan : 7x9x1 : Measurement x=10mm, y=10mm, z=4mm
Zoom Scan : 5x5x8 : Measurement x=8mm, y=8mm, z=4mm

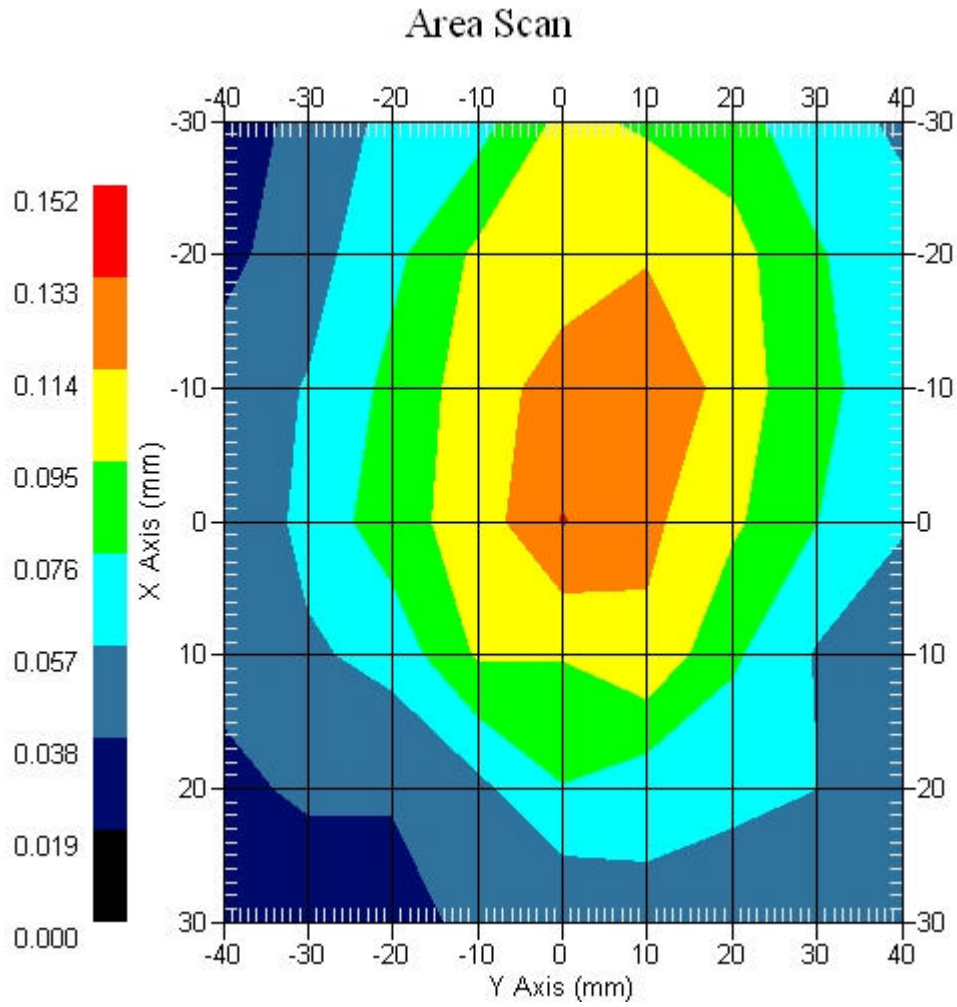
DUT Position : Touch
Channel : Mid

Power Drift-Start : 0.133 W/kg
Power Drift-Finish: 0.130 W/kg
Power Drift (%) : -2.258



1 gram SAR value : 0.135 W/kg
10 gram SAR value : 0.101 W/kg
Area Scan Peak SAR : 0.134 W/kg
Zoom Scan Peak SAR : 0.190 W/kg

Area Scan Plot

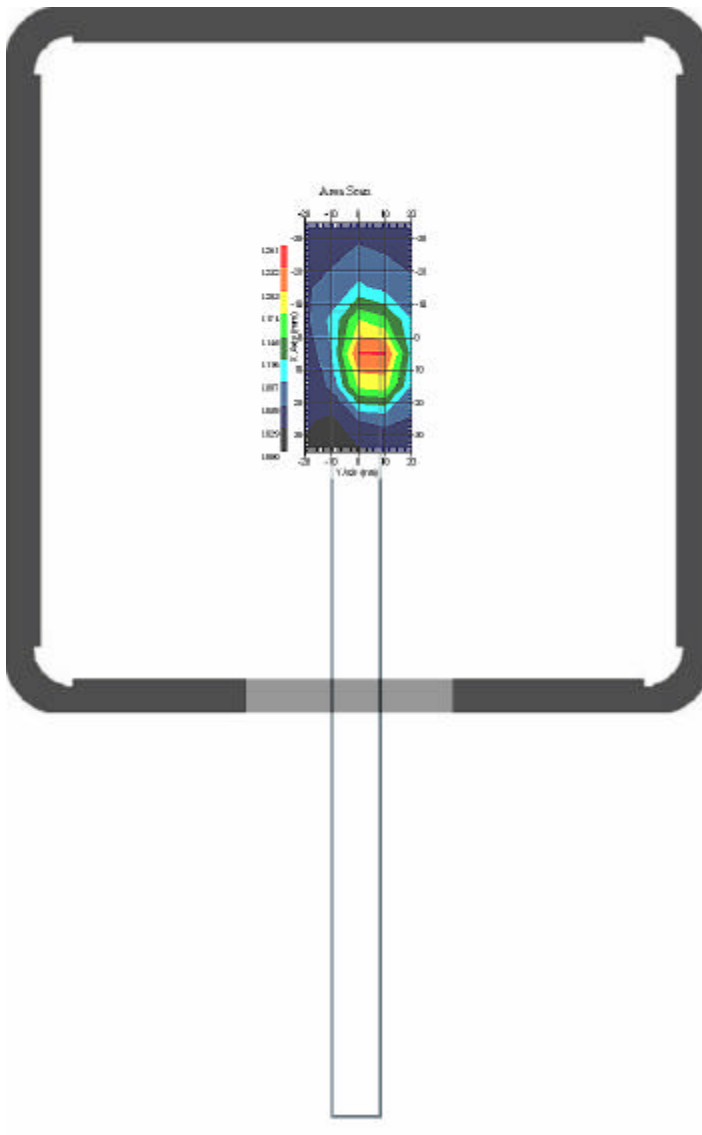


2.7 1900 MHz, EUT Position: Top (M3)

Measurement Date : 12-Feb-2007
Crest Factor : 1
Area Scan : 8x5x1 : Measurement x=10mm, y=10mm, z=4mm
Zoom Scan : 5x5x8 : Measurement x=8mm, y=8mm, z=4mm

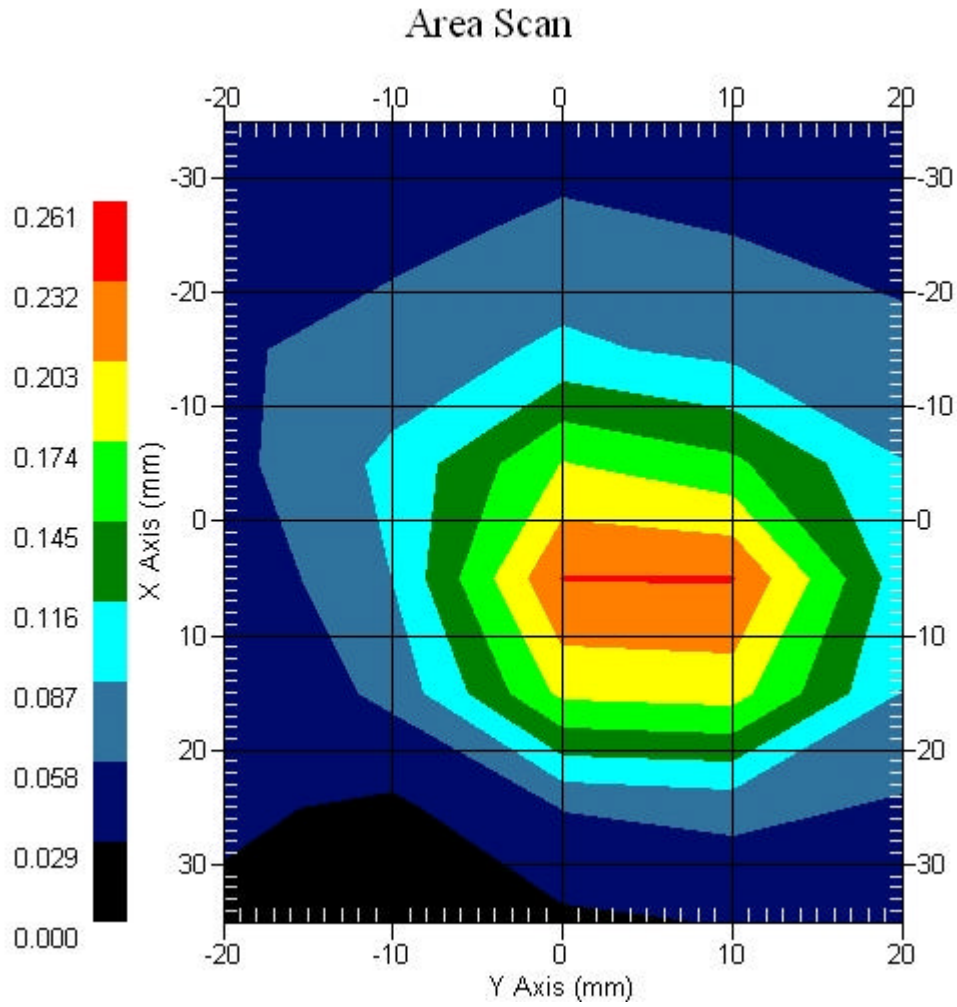
DUT Position : Touch
Channel : Mid

Power Drift-Start : 0.204 W/kg
Power Drift-Finish: 0.202 W/kg
Power Drift (%) : -0.098



1 gram SAR value : 0.186 W/kg
10 gram SAR value : 0.093 W/kg
Area Scan Peak SAR : 0.234 W/kg
Zoom Scan Peak SAR : 0.330 W/kg

Area Scan Plot

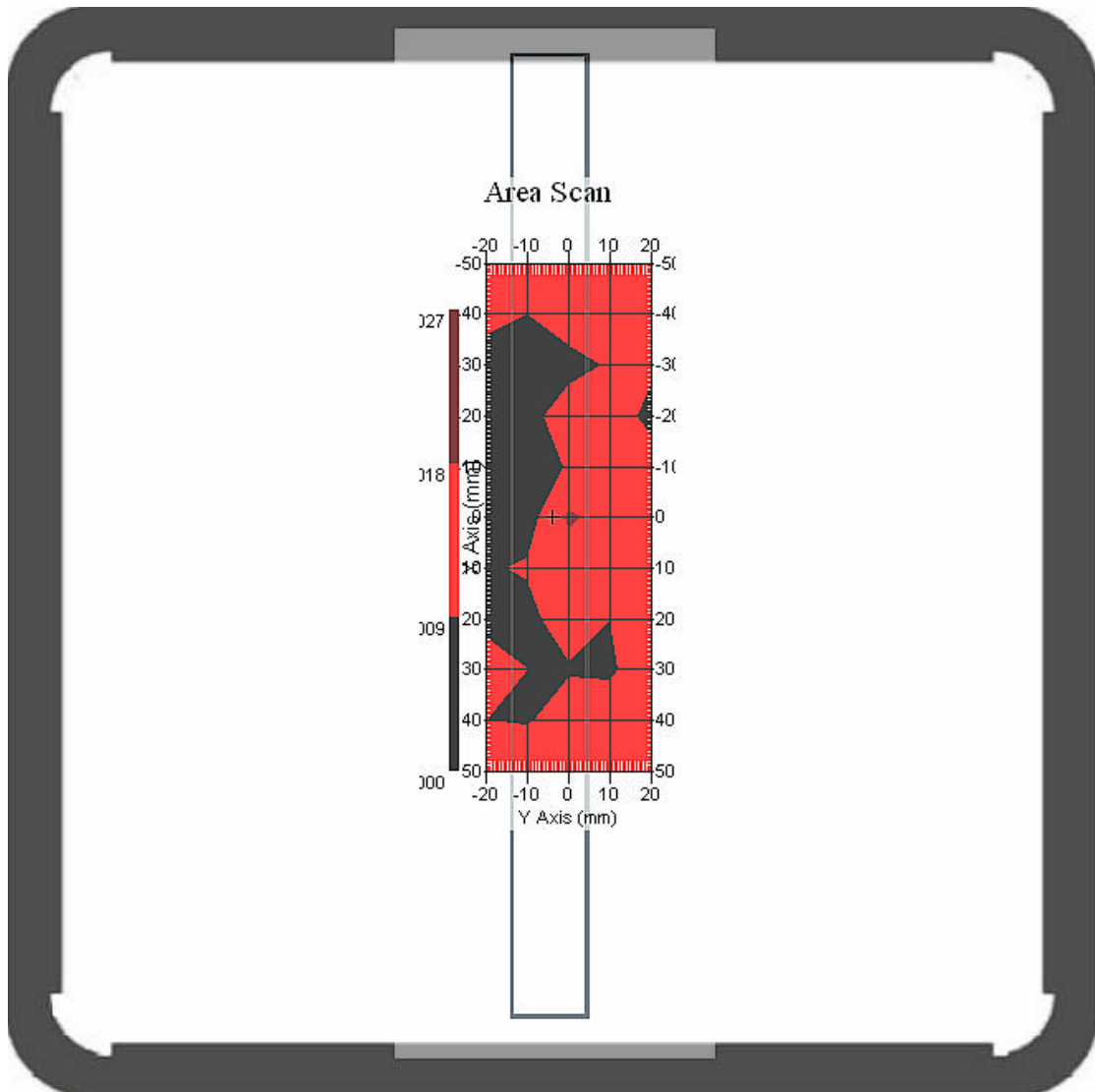


2.8 1900 MHz, EUT Position: Side-L (M5)

Measurement Date : 12-Feb-2007
Crest Factor : 1
Area Scan : 11x5x1 : Measurement x=10mm, y=10mm, z=4mm
Zoom Scan : 5x5x8 : Measurement x=8mm, y=8mm, z=4mm

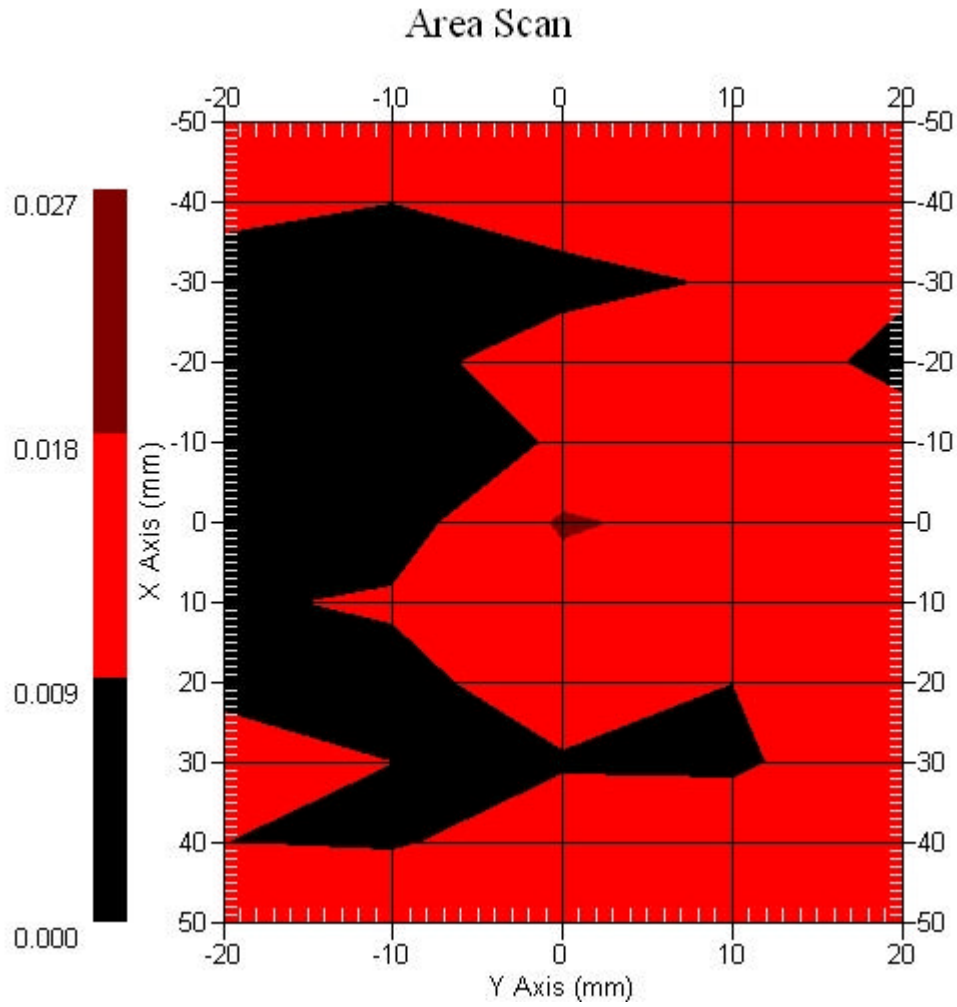
DUT Position : Touch
Channel : Mid

Power Drift-Start : 0.020 W/kg
Power Drift-Finish: 0.020 W/kg
Power Drift (%) : -0.011



1 gram SAR value : 0.018 W/kg
10 gram SAR value : 0.013 W/kg
Area Scan Peak SAR : 0.019 W/kg
Zoom Scan Peak SAR : 0.030 W/kg

Area Scan Plot



2.11 1900MHz Z-Axis plot

Frequency: 1900MHz, EUT Position Bottom (M2)

