

The SCU allows you to enter the system configuration information. This information is needed by the system to identify the type of devices installed and to set up special features. Typical configuration information includes the date and time, the type of disk drives, and the amount of memory; special features include Power Saving and Security.

The configuration information is stored in a special kind of memory called CMOS (Complementary Metal Oxide Semiconductor) RAM. A RTC backup battery backs up CMOS RAM data.

You may need to run SCU when:

- You see an error message on the screen requesting you to run SETUP.
- You change factory default settings for some special features.
- You want to modify the configuration information.

3-2 Running SETUP and Moving Around

NOTE

1. All the SCU screens shown in this chapter are examples. Your actual settings may vary from those shown here.
2. The SCU program may have been updated after this manual was published.

- Security – Contains the system security functions setup parameter.
- Power – Contains the system power management setup parameter.
- Exit – Contains various ways to exit the SETUP program.

Use the right & left Arrow keys & mouse to change display for each group.

Setup Menu



3-2.1 Main

This section describes the main items of the SETUP program.

The SCU screen can be divided into four areas:

- The right column of the screen gives help information of the selected item.
- The bottom lines of the screen give keyboard instructions for moving around and making selections.

3-2.2 Moving Around and Making Selections

You must go through two or three levels to complete the setting for an item. In most cases, there are three levels: menu title, pull-down menu, and submenu.

To move around and make selections, you can use both the touchpad/mouse and keyboard.

You're advised to use the touchpad or mouse. It is more straightforward than using the keyboard.

For most items, simply move the pointer with the touchpad/mouse and click on your selection with the left button. To cancel your selection, click the right button. For a few items, you will need to use the keyboard for making selections.

Using the Keyboard

Keyboard information can be found at the bottom of the screen. You can also use shortcut key, which is highlighted by a different color on the screen.

Described below is the general procedure for using the keyboard to complete setting of an item:

3. Inside most submenus, press the [Tab] key to go to the entry field. Select your desired option with the up/down arrow key or the shortcut key. To complete the setting and leave the submenu, press [Enter] and select the "OK" button. To cancel your selection, press [Esc] or select the "Cancel" button.

3.2.2.1 Main Menu

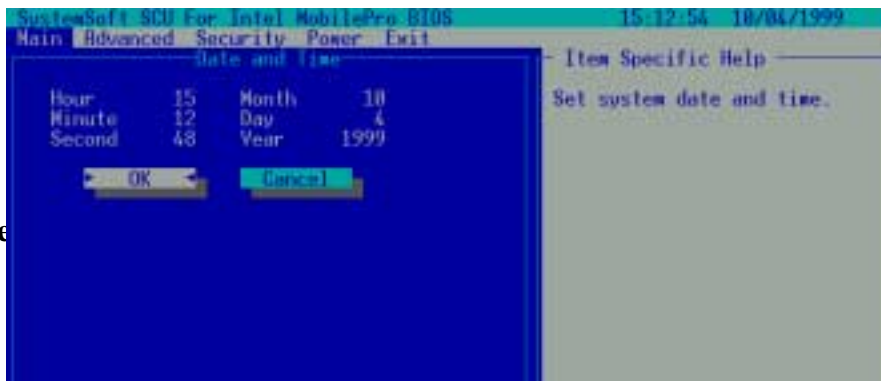
The Main pull-down menu, as shown below, contains the basic configuration settings of the system.



Data

The "Date and Time" item sets the system date and time.

When this item is selected, the submenu will display as shown below.



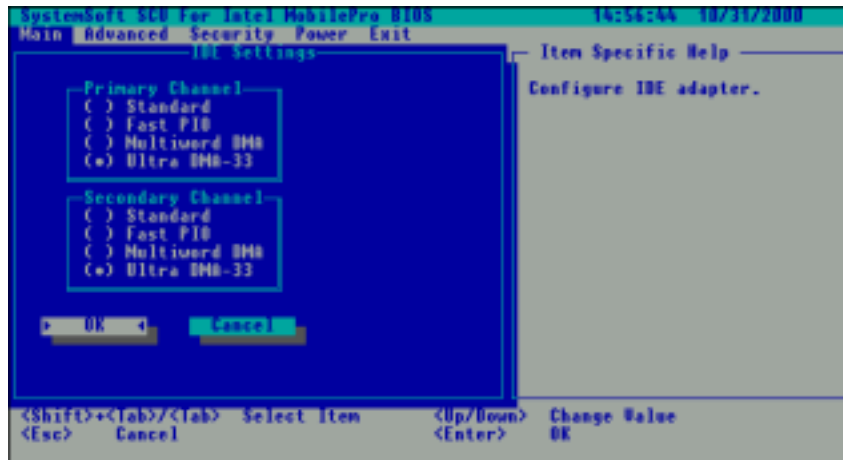
Re

IDE Settings

The “IDE Settings” item sets the type of the hard disk drive in your system. When this item is selected, the submenu will display as shown below.

Select the highest timing which system will set for the IDE drive or select Standard to disable it.

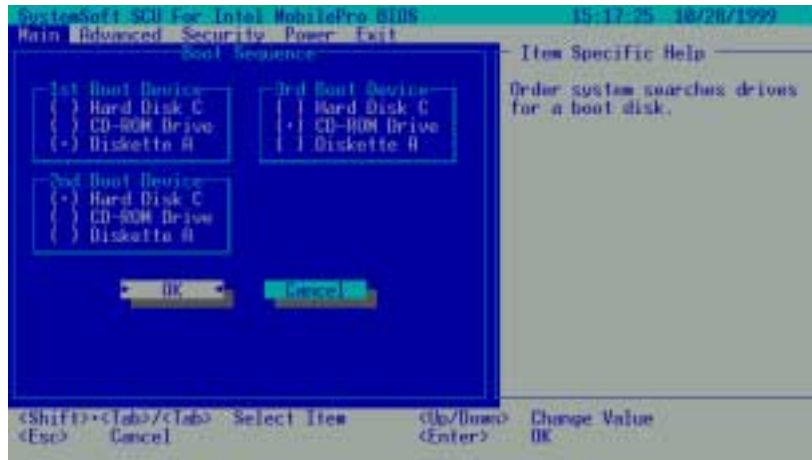
If the drive cannot support this timing, system will choose available one.



Drive 0 is your primary and Drive 1 your secondary.

The “Boot Sequence” have three device item sets the sequence of booting.

When this item is selected, the submenu will display as shown below.



For
Exa
mple:
1st

Boot Device: Disk A

2nd Boot Device: Hard Disk C

3rd Boot Device: CD-ROM Drive

Descriptions of the available options are:

The system will try to boot from drive A then Hard Disk C then CD-ROM Drive.

Key Click

The “Key Click” items sets if there will be a click sound whenever a key is pressed.



The followings describe in sequence all the items of the Advanced menu.

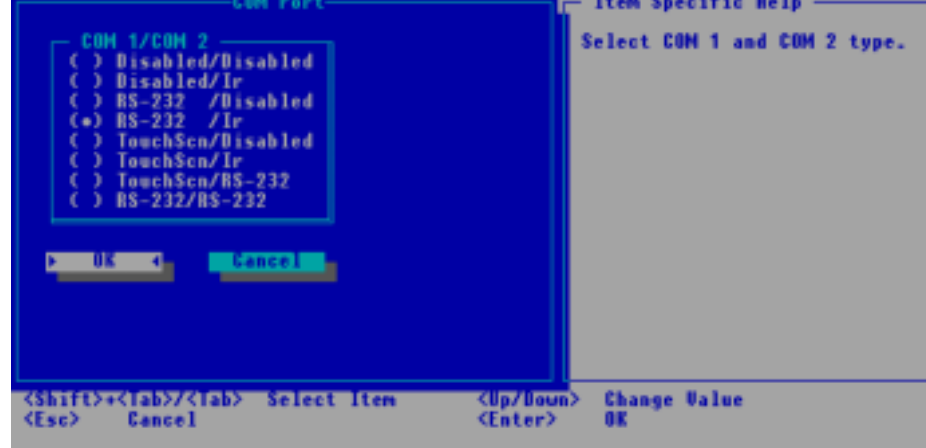
COM Port

The “COM Port” item allows you to assign COM1 and COM2 to specific functions that you wish to use. In general, COM1 can be assigned to RS-232 (the serial port) or touch screen ; COM2 can be assigned to IR.

When this item is selected, the submenu will display as shown below. Select Disabled if you need the resources (3F8/IRQ4 of COM1 and 2F8/IRQ3 of COM2) for other devices.

User select the “TouchScn/Disabled” was assigned COM 1 to Touch Screen.

User select the “TouchScn/Ir” was assigned COM 1 to TouchScn; Ir is Enabled.



IR Mode

The “IR Mode” item sets the communications compatibility mode for the IR port.

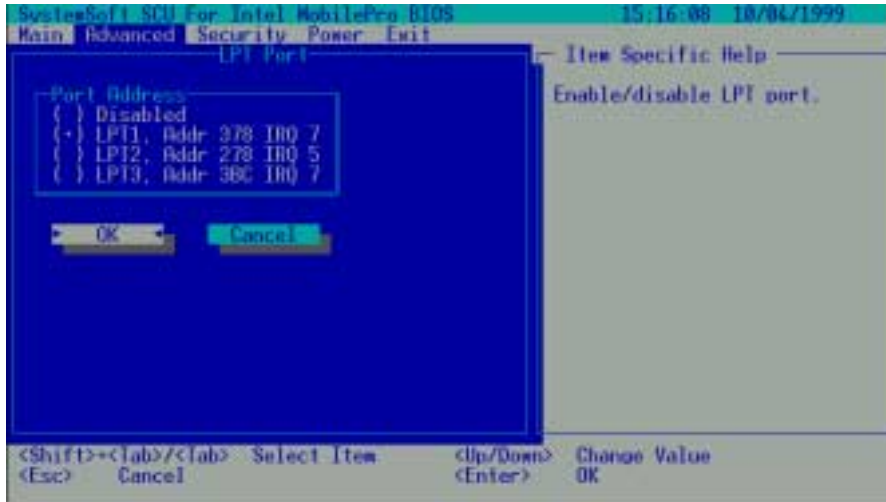
When this item is selected, the submenu will display as shown below.

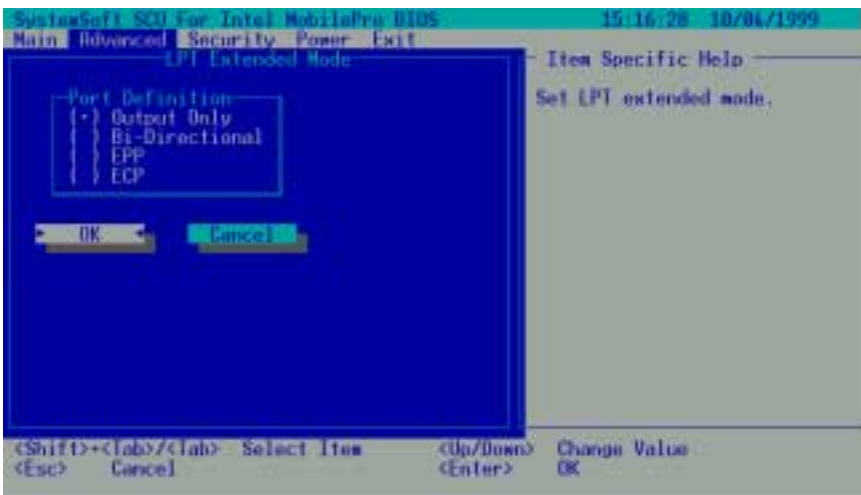
Select according to the type of device with which the notebook is to communicate.



LPT Port

The “LPT Port” item sets the address for the LPT port (parallel port). When this item is selected, the submenu displays as shown below.





Save To Disk Warning Message

The “Save To Disk Warning Message” item sets if the warning message will appear after system power on when there is no Suspend-to-Disk partition on the hard disk.

When this item is selected, no submenu will display. A check mark (✓) indicates Enabled, an underline (_) indicates Disabled.

Keyboard Numlock

The “Keyboard Numlock” item sets if the Num Lock key will be automatically activated after system startup.

When this item is selected, no submenu will display. A check mark (✓) indicates Enabled, an underline (_) indicates Disabled.

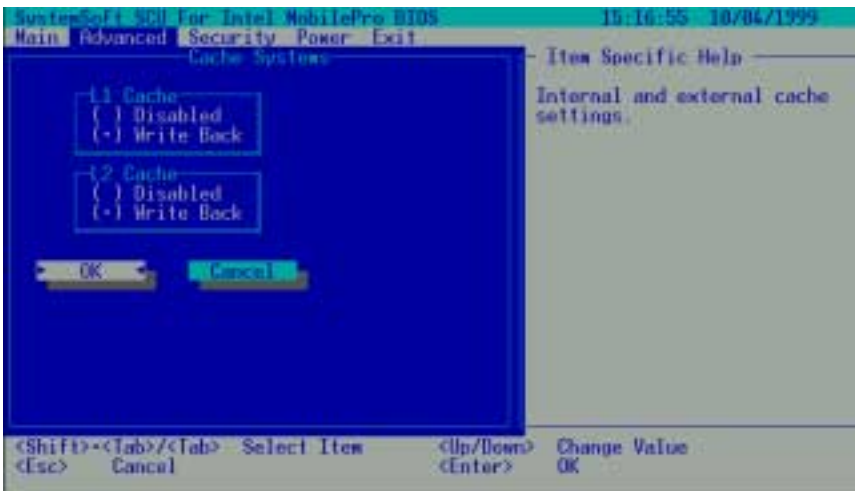
Hot Key Beep

The “Hot Key Beep” item enables or disables the beep sound when hot keys are pressed.

When this item is selected, no submenu will display. A check mark (√) indicates Enabled; an underline (_) indicates Disabled.

Cache Systems

When this item is selected, the submenu will display as shown below.



The “Cache Systems” item Write Back (enables) the cache of your system: L1 cache (internal cache of CPU) and L2 cache (external 256KB or 512KB cache). The cache feature enhances system performance because the most

3-2.3 Security Menu

The Security pull-down menu, as shown below, contains the Security settings that safeguard your system against unauthorized use.

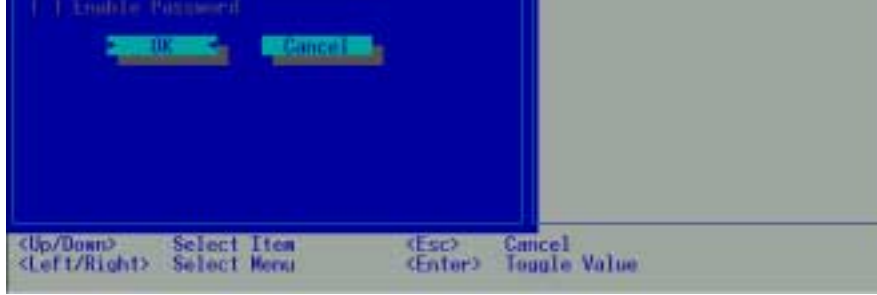


The followings describe in sequence all the items of the Security menu.

System Password

The “System Password” item allows you to set the password for your system. The password is required for starting up the system and running the SCU program.

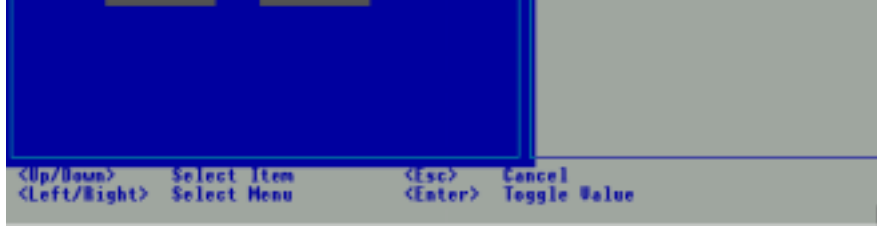
When the item is selected, the submenu will display as shown below. When setting a password, first make sure that Num Lock is off, then type your password in the entry field and press [Enter]. Confirm your password by typing it again and pressing [Enter].



SCU Password

The “SCU Password” item allows you to set the password for your setting SCU program security.

When the item is selected, the submenu will display as shown below. When setting a password, first make sure that Num Lock is off, then type your password in the entry field and press [Enter]. Confirm your password by typing it again and pressing [Enter].



Virus Alert

The “Virus Alert” item, when enabled, gives warning messages if the hard disk boot sector (partition table) has been changed.

When this item is selected, no submenu will display. A check mark (√) indicates Enabled; an underline (_) indicates Disabled.

BootSector Protect

The “BootSector Protect” item helps prevent computer viruses by protecting the hard disk boots sectors (partition table) from any change.

When this item is selected, no submenu will display. A check mark (√) indicates Enabled; an underline (_) indicates Disabled.

CAUTION

Disable this item before you install an operating system, otherwise, the installation will fail.



The followings describe in sequence all the items of the Power menu.

Enable Power Management

The “Enable Power Management” item is the master control for the Power Management features.

When this item is selected, no submenu will display. A check mark (√) indicates Enabled; an underline (_) indicates Disabled.

Max Performance/Balanced Power Saving/Max Power Saving/Customize

These four item are mutually exclusive options. You can select one of them. A check mark (√) indicates Enabled; an underline (_) indicates Disabled.

Descriptions of the four options are:

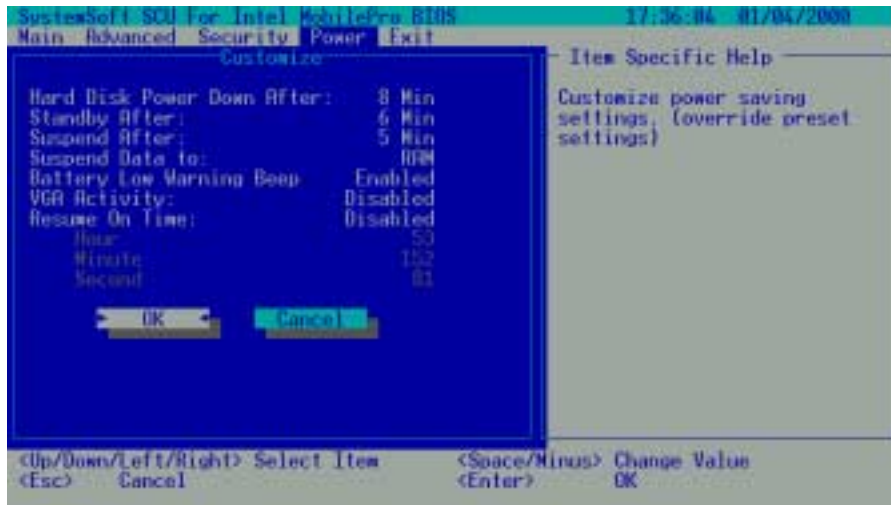
1. Max Performance: Select this option for the pre-defined settings that allow maximum performance but shortest battery life.

NOTE

To know the pre-defined settings for the above three options, you can select the next option to view the settings in the submenu.

Customizing Power Management Features

To customize Power Management features, select “Customize” from the Power pull-down menu. The submenu will display as shown below.



power up again when next accessed.

The available options are Disabled, 1 Min, 2 Min, 4 Min, 8 Min, 10 Min, 15 Min and 20 Min.

Standby After

The “Standby After” item sets the time-out period for initiating Standby mode. If the notebook remains idle until the time-out period for Standby mode has been reached, the notebook enters Standby mode.

In Standby mode, several system components go into standby or off mode so that system power will be reduced. The system will wake up from Standby mode when a key is pressed on the internal or external keyboard or a button is pressed on internal or external PS/2 mouse.

The available options are Disabled, 1 Min, 2 Min, 4 Min, 6 Min, 8 Min, 12 Min and 16 Min.

Suspend After

The “Suspend After” item sets the time-out period for initiating Suspend mode. It works in conjunction with the previous item “Standby After”. After the notebook enters Standby mode, the Power Saving starts the time-out for the Suspend mode. If the notebook remains in Standby mode until the time-out period for Suspend mode has been reached, the notebook enters Suspend mode.

The Suspend mode is determined by the next item, “Suspend Data to.” It can be either Suspend-to-RAM or Suspend-to-Disk.

When Suspend-to-Disk mode is initiated, the system preserves all the running application programs as a file in a “Suspend-to-disk partition” on the hard disk and then turns off automatically.

The available options are Disables, 1 Min, 2 Min, 5 Min, 10 Min and 15 Min.

Suspend Data to

The “Suspend Data to” item defines the Suspend mode of your system. The available options are RAM and Disk.

Battery Low Warning Beep

The “Battery Low Warning Beep” items enables or disables the low battery warning beep.

The available options are Enabled and Disabled.

VGA Activity

The “VGA Activity” items sets if obvious video activities (such as screen savers) will prevent Power Management modes.

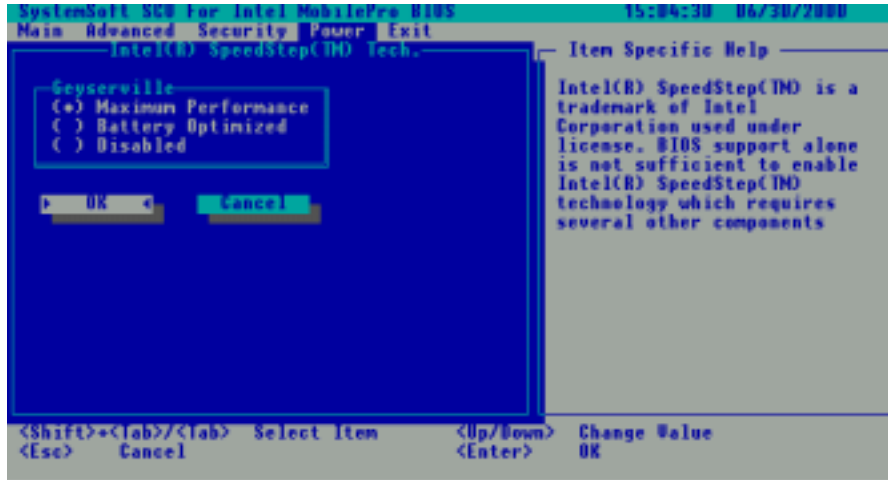
Descriptions of the available options are:

1. Enabled: Power Management will not take effect if there are VGA activities.
2. Disabled: Power Management will ignore VGA activities.

The “Hour”, “Minute” and “Second” items work in conjunction with the previous item “Resume on Time”. It sets the alarm time for waking up the system from Suspend-to-RAM mode.

Enter the value in each field by typing the number.

Intel® SpeedStep

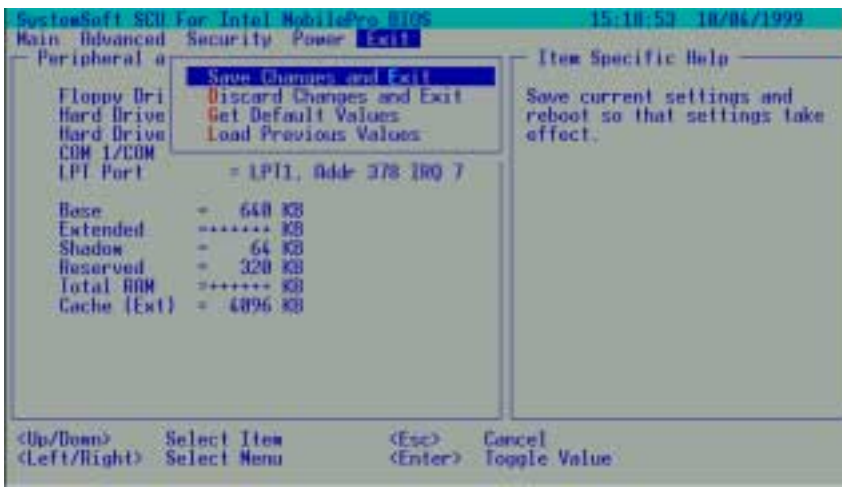


Maximum Performance:

The select “Maximum Performance” field then CPU setup high-speed mode.

Battery Optimized:

The select “Battery Optimized” field then CPU setup low-speed mode.



Descriptions of the Exit choices are:

1. Save Change and Exit: Save changes you have made and exit.
2. Discard Changes and Exit: Exit without saving the changes you has made.
3. Get Default Values: Load factory default values for all the items.
4. Load Previous Values: Restore previous values for all the items.