



台揚科技股份有限公司  
MICROELECTRONICS TECHNOLOGY INC.

# MTI RU-888-1 RFID Module

## Installation Guide

### Version 1.0

#### MTI Group Proprietary Information

Any unauthorized use, duplication, reproduction, or disclosure of this document may be considered as infringement of MTI Group's intellectual

#### 台揚集團智慧財產

任何未經授權逕予複製、重製、公開或使用本文之行為，將被視為侵害台揚集團之智慧財產權，將可因此負擔法律責任。

#### MTI Group Proprietary Information

Any unauthorized use, duplication, reproduction, or disclosure of this document may be considered as infringement of MTI Group's intellectual property rights, the infringer may be accused and liable applicable legal penalties.

1. Double-Click "AS399x Reader Suite Setup.exe" from the Disk
2. Please click next to continue the installation when you see the fig.2. Or cancel to exit the setup.

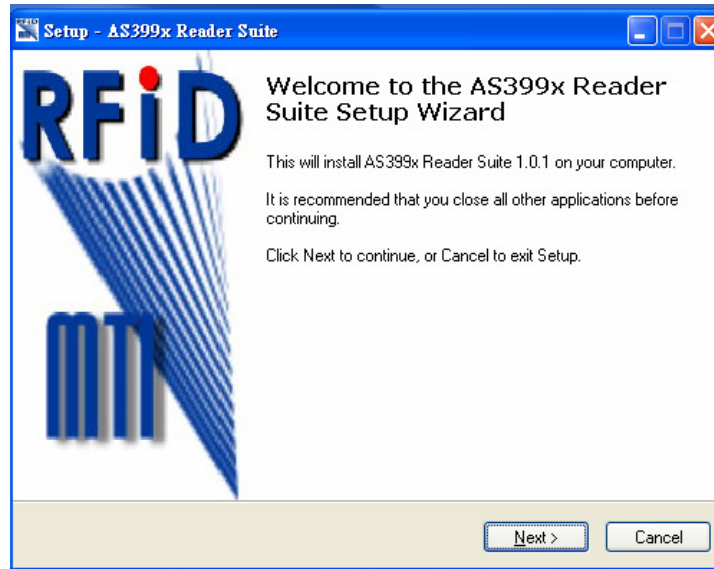


Fig.2

3. Please choose "I accept the agreement" as in Fig.3 to proceed the installation or cancel to exit the setup.

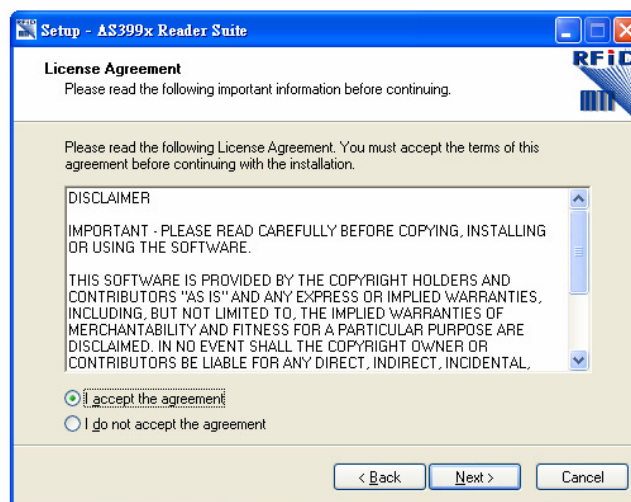


Fig.3

4. Please select the folder to install as in Fig.4 or cancel to exit the setup.

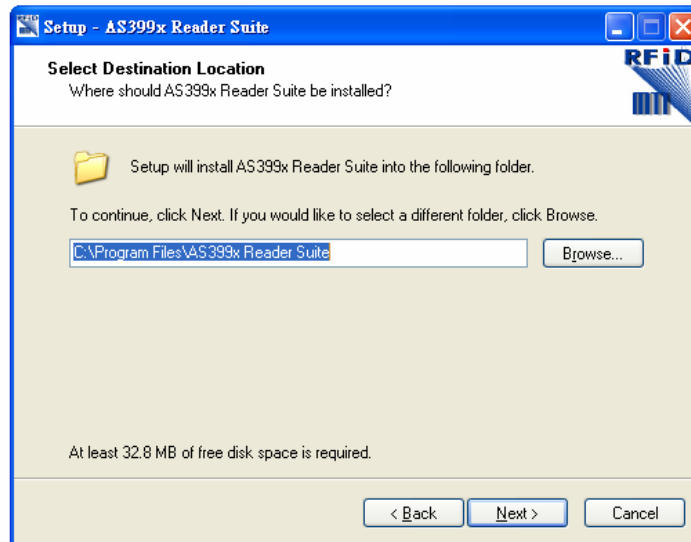


Fig.4

5. Please Select Start Menu Folder as Fig.5 or cancel to exit the setup.

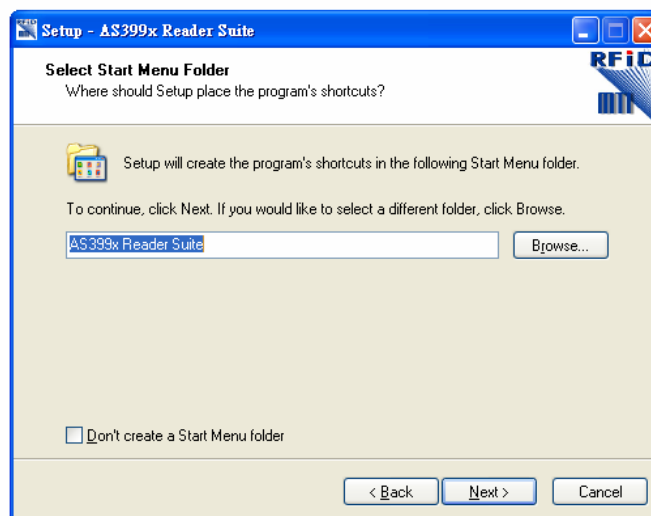


Fig.5

6. Please check the additional tasks if you are preferred as Fig.6 or cancel to exit the setup.

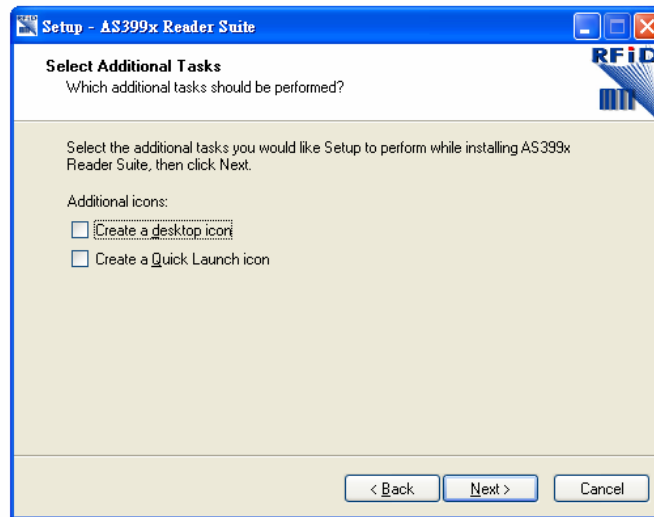


Fig.6

7. You are ready to install this Software. Please press "Install" to proceed as Fig.7 or cancel to exit the setup.

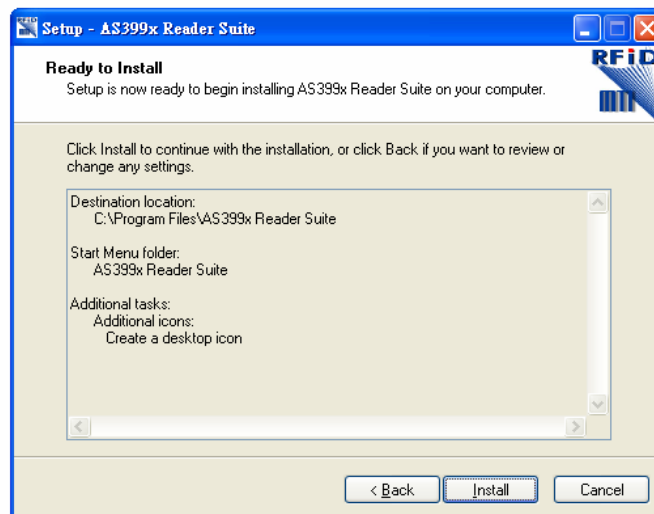


Fig.7

8. Please wait patiently around 5 seconds.

9. Congratulation ! You already complete the onerall installation. Please press

“Finish” to leave this installation as Fig.8.

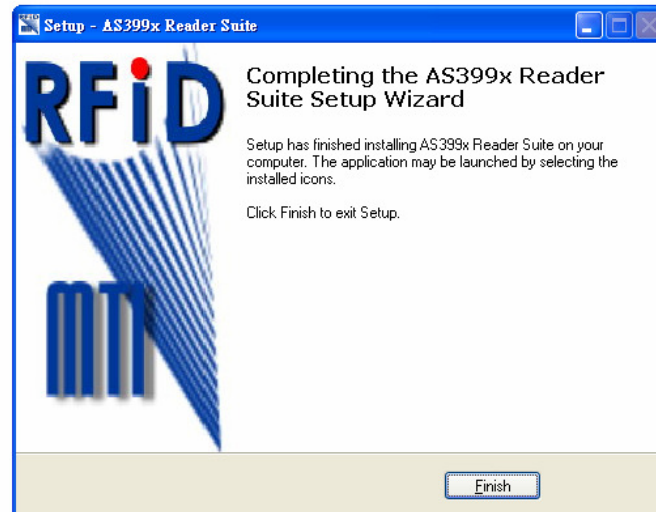


Fig.8