

CDMA Band 1 xEVDO Rel.0 Edge 1 tilt Mid ch

Communication System: UID 0, CDMA2000 (0); Communication System Band: PCS; Frequency: 1880 MHz; Duty Cycle: 1:1

Medium parameters used: $f = 1880$ MHz; $\sigma = 1.555$ S/m; $\epsilon_r = 53.377$; $\rho = 1000$ kg/m³

Phantom section: Flat Section

Measurement Standard: DASYS (IEEE/IEC/ANSI C63.19-2007)

DASY5 Configuration

Probe: EX3DV4 - SN3922; ConvF(7.85, 7.85, 7.85); Calibrated: 2014/06/13; $\{\text{Probe: Calibration Date}\}$

Sensor-Surface: 2mm (Mechanical Surface Detection)

Electronics: DAE4 Sn1372; Calibrated: 2014/06/18

Phantom: ELI v5.0 TP1207; Type: QDOVA001BB; Serial: TP:1207

Measurement SW: DASYS2, Version 52.8 (8);

Area Scan 3 (81x101x1): Interpolated grid: $dx=1.500$ mm, $dy=1.500$ mm

Maximum value of SAR (interpolated) = 0.716 W/kg

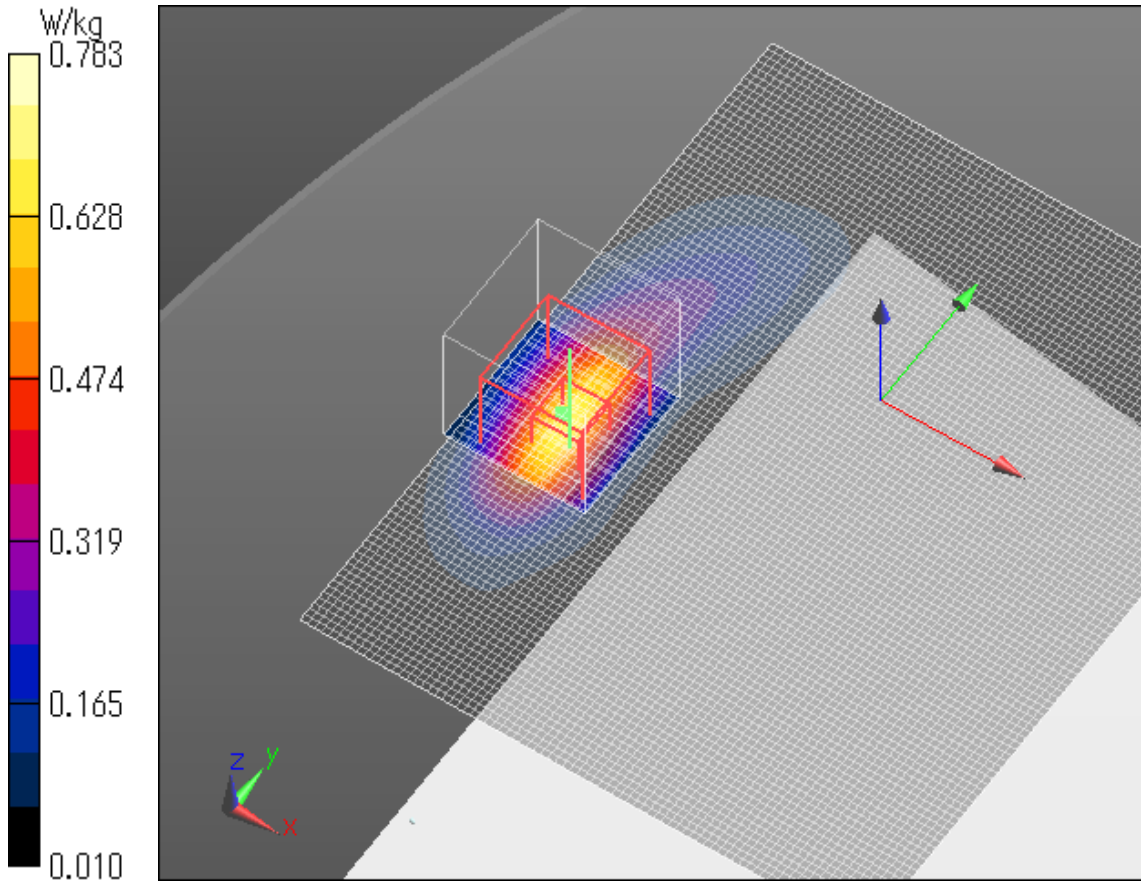
Zoom Scan (7x7x7)/Cube 0: Measurement grid: $dx=5$ mm, $dy=5$ mm, $dz=5$ mm

Reference Value = 20.88 V/m; Power Drift = -0.17 dB

Peak SAR (extrapolated) = 1.03 W/kg

SAR(1 g) = 0.535 W/kg; SAR(10 g) = 0.262 W/kg

Maximum value of SAR (measured) = 0.783 W/kg



CDMA Band 1 1xRTT Edge 2 tilt Mid ch

Communication System: UID 0, CDMA2000 (0); Communication System Band: PCS; Frequency: 1880 MHz; Duty Cycle: 1:1

Medium parameters used: $f = 1880$ MHz; $\sigma = 1.555$ S/m; $\epsilon_r = 53.377$; $\rho = 1000$ kg/m³

Phantom section: Flat Section

Measurement Standard: DASYS5 (IEEE/IEC/ANSI C63.19-2007)

DASY5 Configuration

Probe: EX3DV4 - SN3922; ConvF(7.85, 7.85, 7.85); Calibrated: 2014/06/13; $\{\text{Probe: Calibration Date}\}$

Sensor-Surface: 2mm (Mechanical Surface Detection (Locations From Previous Scan Used)),

Sensor-Surface: 2mm (Mechanical Surface Detection)

Electronics: DAE4 Sn1372; Calibrated: 2014/06/18

Phantom: ELI v5.0 TP1207; Type: QDOVA001BB; Serial: TP:1207

Measurement SW: DASYS2, Version 52.8 (8);

Area Scan 2 2 (121x61x1): Interpolated grid: $dx=1.500$ mm, $dy=1.500$ mm

Maximum value of SAR (interpolated) = 0.0293 W/kg

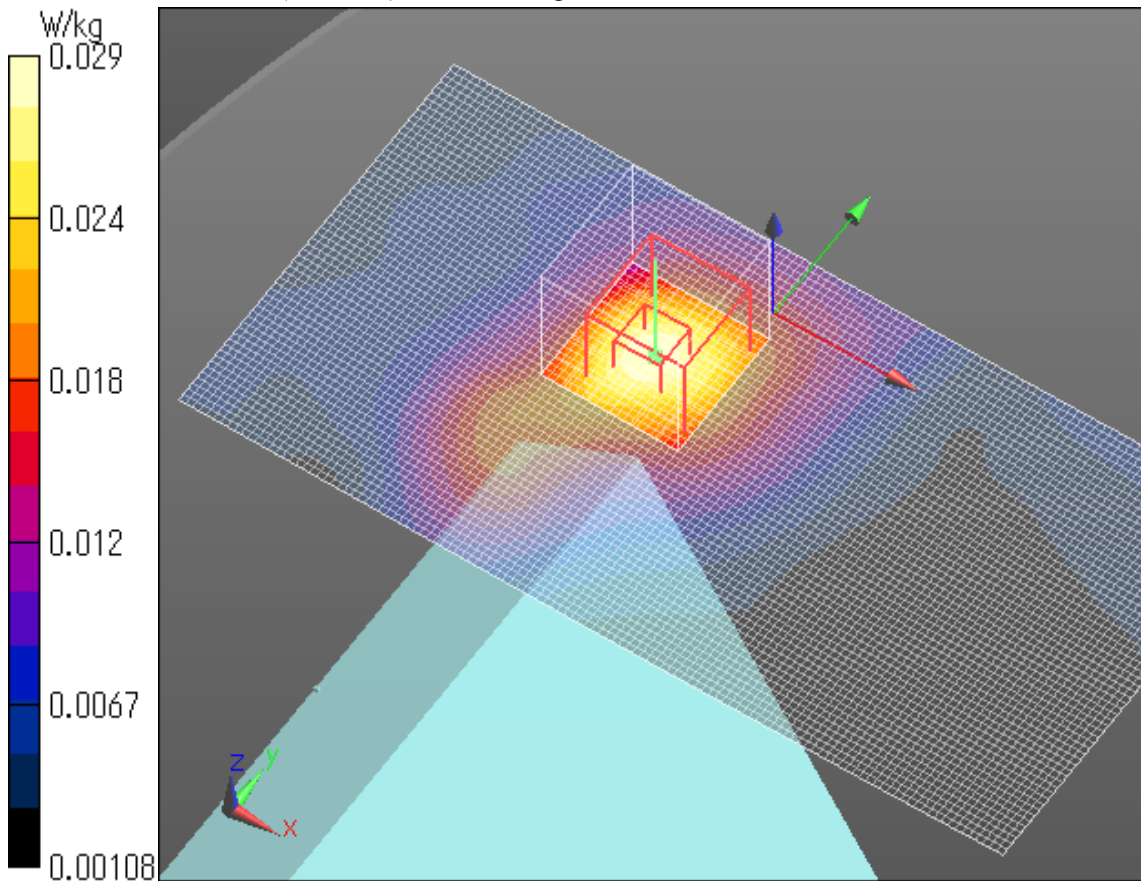
Zoom Scan (7x7x7)/Cube 0: Measurement grid: $dx=5$ mm, $dy=5$ mm, $dz=5$ mm

Reference Value = 4.390 V/m; Power Drift = -0.06 dB

Peak SAR (extrapolated) = 0.0360 W/kg

SAR(1 g) = 0.022 W/kg; SAR(10 g) = 0.013 W/kg

Maximum value of SAR (measured) = 0.0292 W/kg



CDMA Band 1 1xRTT Edge 3 tilt Mid ch

Communication System: UID 0, CDMA2000 (0); Communication System Band: PCS; Frequency: 1880 MHz; Duty Cycle: 1:1

Medium parameters used: $f = 1880$ MHz; $\sigma = 1.555$ S/m; $\epsilon_r = 53.377$; $\rho = 1000$ kg/m³

Phantom section: Flat Section

Measurement Standard: DASY5 (IEEE/IEC/ANSI C63.19-2007)

DASY5 Configuration

Probe: EX3DV4 - SN3922; ConvF(7.85, 7.85, 7.85); Calibrated: 2014/06/13; $\{Probe: Calibration Date\}$

Sensor-Surface: 2mm (Mechanical Surface Detection)

Electronics: DAE4 Sn1372; Calibrated: 2014/06/18

Phantom: ELI v5.0 TP1207; Type: QDOVA001BB; Serial: TP:1207

Measurement SW: DASY52, Version 52.8 (8);

Area Scan (121x81x1): Interpolated grid: dx=1.500 mm, dy=1.500 mm

Maximum value of SAR (interpolated) = 0.0384 W/kg

Zoom Scan (7x7x7)/Cube 0: Measurement grid: dx=5mm, dy=5mm, dz=5mm

Reference Value = 5.086 V/m; Power Drift = -0.03 dB

Peak SAR (extrapolated) = 0.0490 W/kg

SAR(1 g) = 0.030 W/kg; SAR(10 g) = 0.018 W/kg

Maximum value of SAR (measured) = 0.0392 W/kg

