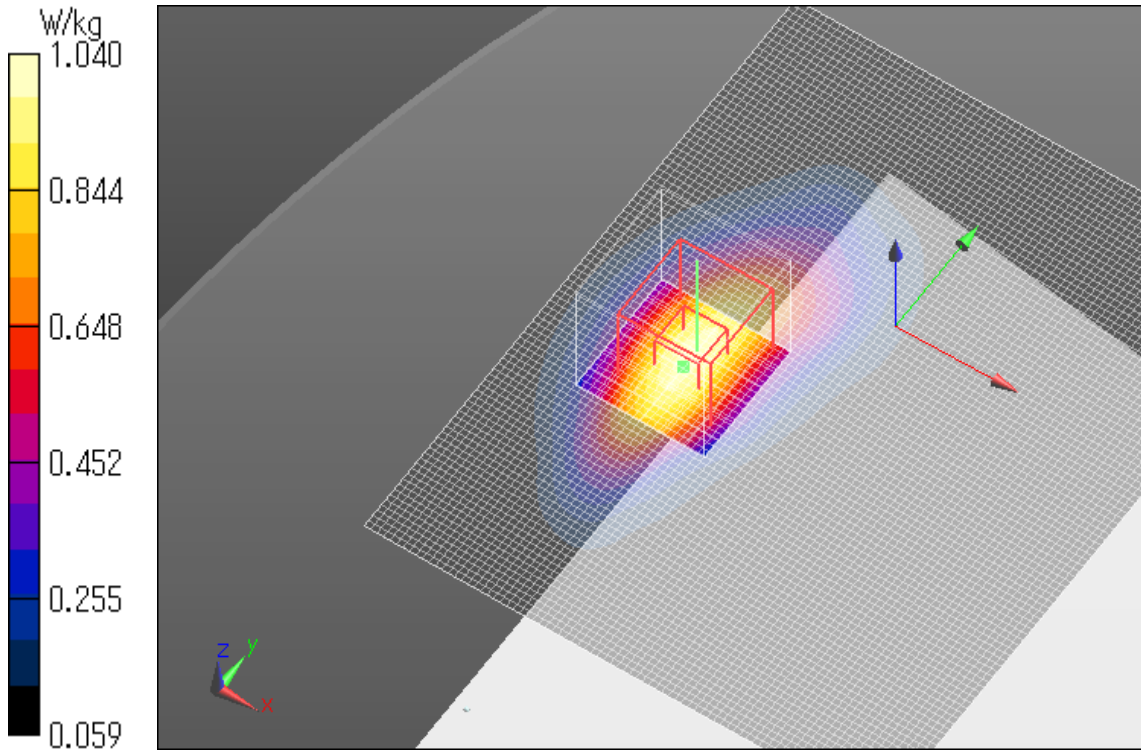


**LTE 13 10MHz QPSK 1RB Allocation 24 start Edge 1 tilt Mid ch**

Communication System: UID 0, Generic LTE (0); Communication System Band: Band 13,  
E-UTRA/FDD (777.0 - 787.0 MHz); Frequency: 782 MHz; Duty Cycle: 1:1  
Medium parameters used:  $f = 782$  MHz;  $\sigma = 1.003$  S/m;  $\epsilon_r = 53.809$ ;  $\rho = 1000$  kg/m<sup>3</sup>  
Phantom section: Flat Section  
Measurement Standard: DASY5 (IEEE/IEC/ANSI C63.19-2007)  
DASY5 Configuration  
Probe: EX3DV4 - SN3922; ConvF(10.04, 10.04, 10.04); Calibrated: 2014/06/13; {Probe: Calibration Date}  
Sensor-Surface: 2mm (Mechanical Surface Detection)  
Electronics: DAE4 Sn1372; Calibrated: 2014/06/18  
Phantom: ELI v5.0 TP1207; Type: QDOVA001BB; Serial: TP:1207  
Measurement SW: DASY52, Version 52.8 (8); SEMCAD X Version 14.6.10 (7331)

**Area Scan 3 (81x101x1):** Interpolated grid: dx=1.500 mm, dy=1.500 mm  
Maximum value of SAR (interpolated) = 1.07 W/kg

**Zoom Scan (7x7x7)/Cube 0:** Measurement grid: dx=5mm, dy=5mm, dz=5mm  
Reference Value = 32.79 V/m; Power Drift = -0.03 dB  
Peak SAR (extrapolated) = 1.29 W/kg  
**SAR(1 g) = 0.781 W/kg; SAR(10 g) = 0.489 W/kg**  
Maximum value of SAR (measured) = 1.04 W/kg

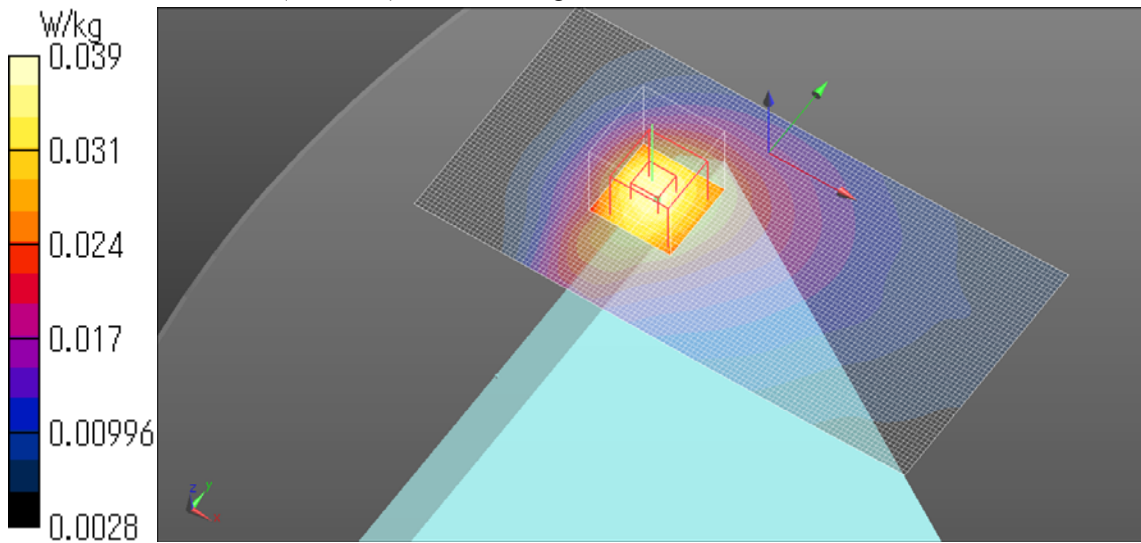


**LTE 13 10MHz QPSK 1RB Allocation 24 start Edge 2 tilt Mid ch**

Communication System: UID 0, Generic LTE (0); Communication System Band: Band 13,  
E-UTRA/FDD (777.0 - 787.0 MHz); Frequency: 782 MHz; Duty Cycle: 1:1  
Medium parameters used:  $f = 782$  MHz;  $\sigma = 1.003$  S/m;  $\epsilon_r = 53.809$ ;  $\rho = 1000$  kg/m<sup>3</sup>  
Phantom section: Flat Section  
Measurement Standard: DASY5 (IEEE/IEC/ANSI C63.19-2007)  
DASY5 Configuration  
Probe: EX3DV4 - SN3922; ConvF(10.04, 10.04, 10.04); Calibrated: 2014/06/13; {Probe: Calibration Date}  
Sensor-Surface: 2mm (Mechanical Surface Detection (Locations From Previous Scan Used)),  
Sensor-Surface: 2mm (Mechanical Surface Detection)  
Electronics: DAE4 Sn1372; Calibrated: 2014/06/18  
Phantom: ELI v5.0 TP1207; Type: QDOVA001BB; Serial: TP:1207  
Measurement SW: DASY52, Version 52.8 (8); SEMCAD X Version 14.6.10 (7331)

**Area Scan 2 2 (121x61x1):** Interpolated grid: dx=1.500 mm, dy=1.500 mm  
Maximum value of SAR (interpolated) = 0.0365 W/kg

**Zoom Scan (7x7x7)/Cube 0:** Measurement grid: dx=5mm, dy=5mm, dz=5mm  
Reference Value = 6.237 V/m; Power Drift = -0.02 dB  
Peak SAR (extrapolated) = 0.0450 W/kg  
**SAR(1 g) = 0.032 W/kg; SAR(10 g) = 0.023 W/kg**  
Maximum value of SAR (measured) = 0.0386 W/kg



**LTE 13 10MHz QPSK 1RB Allocation 24 start Edge 3 tilt Mid ch**

Communication System: UID 0, Generic LTE (0); Communication System Band: Band 13,  
E-UTRA/FDD (777.0 - 787.0 MHz); Frequency: 782 MHz; Duty Cycle: 1:1  
Medium parameters used:  $f = 782$  MHz;  $\sigma = 1.003$  S/m;  $\epsilon_r = 53.809$ ;  $\rho = 1000$  kg/m<sup>3</sup>  
Phantom section: Flat Section  
Measurement Standard: DASY5 (IEEE/IEC/ANSI C63.19-2007)  
DASY5 Configuration  
Probe: EX3DV4 - SN3922; ConvF(10.04, 10.04, 10.04); Calibrated: 2014/06/13; {Probe: Calibration Date}  
Sensor-Surface: 2mm (Mechanical Surface Detection (Locations From Previous Scan Used)),  
Sensor-Surface: 2mm (Mechanical Surface Detection)  
Electronics: DAE4 Sn1372; Calibrated: 2014/06/18  
Phantom: ELI v5.0 TP1207; Type: QDOVA001BB; Serial: TP:1207  
Measurement SW: DASY52, Version 52.8 (8); SEMCAD X Version 14.6.10 (7331)

**Area Scan (121x81x1):** Interpolated grid: dx=1.500 mm, dy=1.500 mm  
Maximum value of SAR (interpolated) = 0.0404 W/kg

**Zoom Scan (7x7x7)/Cube 0:** Measurement grid: dx=5mm, dy=5mm, dz=5mm  
Reference Value = 6.424 V/m; Power Drift = -0.01 dB  
Peak SAR (extrapolated) = 0.0440 W/kg  
**SAR(1 g) = 0.034 W/kg; SAR(10 g) = 0.026 W/kg**  
Maximum value of SAR (measured) = 0.0394 W/kg

