

CDMA Band 0 1xEVDO Rel.0 Edge 1 tilt Low ch

Communication System: UID 0, CDMA2000 (0); Communication System Band: US Cellular; Frequency: 824.7 MHz; Duty Cycle: 1:1

Medium parameters used: $f = 825$ MHz; $\sigma = 0.958$ S/m; $\epsilon_r = 54.993$; $\rho = 1000$ kg/m³

Phantom section: Flat Section

Measurement Standard: DASY5 (IEEE/IEC/ANSI C63.19-2007)

DASY5 Configuration

Probe: EX3DV4 - SN3922; ConvF(9.98, 9.98, 9.98); Calibrated: 2014/06/13; $\{Probe: Calibration Date\}$

Sensor-Surface: 2mm (Mechanical Surface Detection (Locations From Previous Scan Used)),

Sensor-Surface: 2mm (Mechanical Surface Detection)

Electronics: DAE4 Sn1372; Calibrated: 2014/06/18

Phantom: ELI v5.0 TP1207; Type: QDOVA001BB; Serial: TP:1207

Measurement SW: DASY52, Version 52.8 (8); SEMCAD X Version 14.6.10 (7331)

Area Scan 3 (61x101x1): Interpolated grid: $dx=1.500$ mm, $dy=1.500$ mm

Maximum value of SAR (interpolated) = 0.649 W/kg

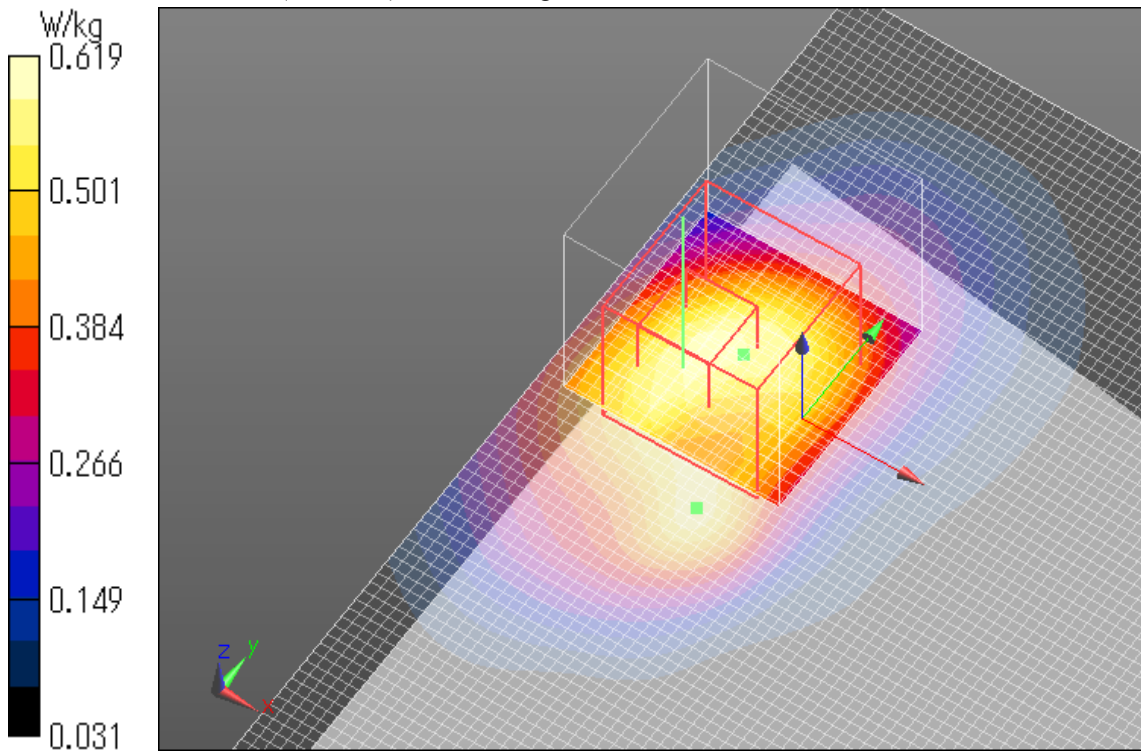
Zoom Scan (7x7x7)/Cube 0: Measurement grid: $dx=5$ mm, $dy=5$ mm, $dz=5$ mm

Reference Value = 25.41 V/m; Power Drift = -0.02 dB

Peak SAR (extrapolated) = 0.828 W/kg

SAR(1 g) = 0.439 W/kg; SAR(10 g) = 0.275 W/kg

Maximum value of SAR (measured) = 0.619 W/kg



CDMA Band 0 1xRTT Rel.0 Edge 2 tilt Mid ch

Communication System: UID 0, CDMA2000 (0); Communication System Band: US Cellular; Frequency: 836.52 MHz; Duty Cycle: 1:1

Medium parameters used: $f = 837$ MHz; $\sigma = 0.97$ S/m; $\epsilon_r = 54.886$; $\rho = 1000$ kg/m³

Phantom section: Flat Section

Measurement Standard: DASY5 (IEEE/IEC/ANSI C63.19-2007)

DASY5 Configuration

Probe: EX3DV4 - SN3922; ConvF(9.98, 9.98, 9.98); Calibrated: 2014/06/13; $\{Probe: Calibration Date\}$

Sensor-Surface: 2mm (Mechanical Surface Detection (Locations From Previous Scan Used)),

Sensor-Surface: 2mm (Mechanical Surface Detection)

Electronics: DAE4 Sn1372; Calibrated: 2014/06/18

Phantom: ELI v5.0 TP1207; Type: QDOVA001BB; Serial: TP:1207

Measurement SW: DASY52, Version 52.8 (8); SEMCAD X Version 14.6.10 (7331)

Area Scan 2 2 (81x61x1): Interpolated grid: dx=1.500 mm, dy=1.500 mm

Maximum value of SAR (interpolated) = 0.00397 W/kg

Area Scan 2 2 2 (41x61x1): Interpolated grid: dx=1.500 mm, dy=1.500 mm

Maximum value of SAR (interpolated) = 0.00410 W/kg

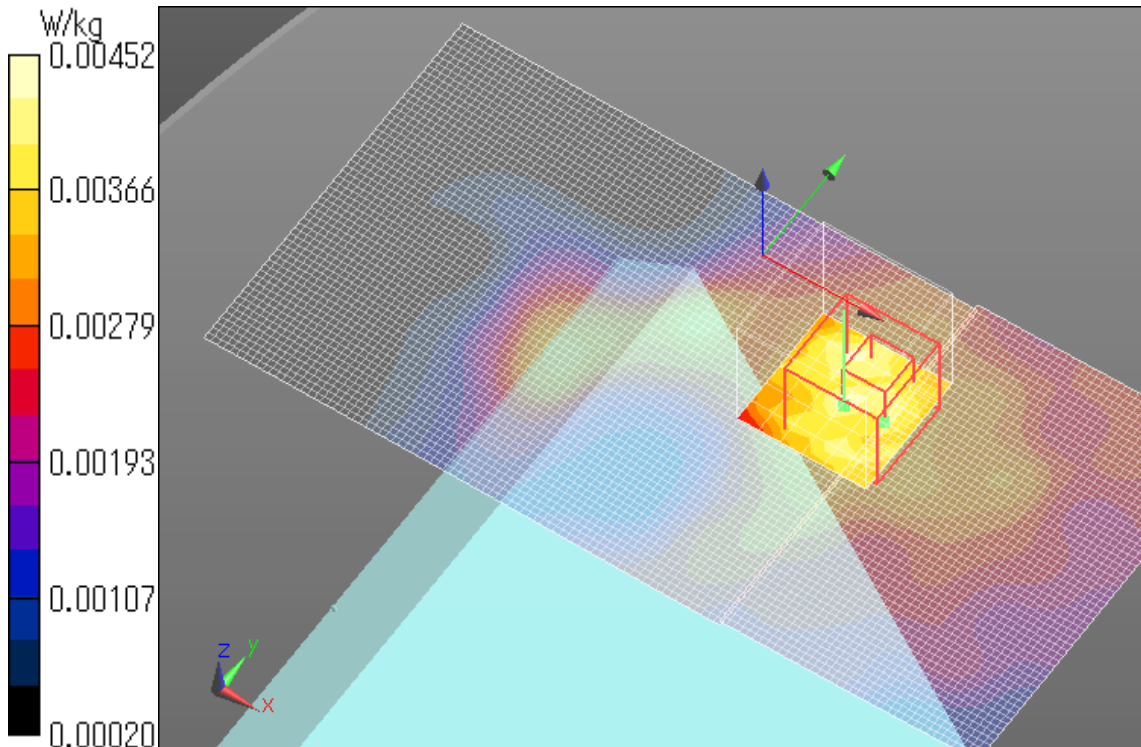
Zoom Scan (7x7x7)/Cube 0: Measurement grid: dx=5mm, dy=5mm, dz=5mm

Reference Value = 2.028 V/m; Power Drift = 0.15 dB

Peak SAR (extrapolated) = 0.00497 W/kg

SAR(1 g) = 0.00357 W/kg; SAR(10 g) = 0.0026 W/kg

Maximum value of SAR (measured) = 0.00452 W/kg



CDMA Band 0 1xRTT Rel.0 Edge 3 tilt Mid ch

Communication System: UID 0, CDMA2000 (0); Communication System Band: US Cellular; Frequency: 836.52 MHz; Duty Cycle: 1:1

Medium parameters used: $f = 837$ MHz; $\sigma = 0.97$ S/m; $\epsilon_r = 54.886$; $\rho = 1000$ kg/m³

Phantom section: Flat Section

Measurement Standard: DASY5 (IEEE/IEC/ANSI C63.19-2007)

DASY5 Configuration

Probe: EX3DV4 - SN3922; ConvF(9.98, 9.98, 9.98); Calibrated: 2014/06/13; $\{Probe: Calibration Date\}$

Sensor-Surface: 2mm (Mechanical Surface Detection (Locations From Previous Scan Used)),

Sensor-Surface: 2mm (Mechanical Surface Detection)

Electronics: DAE4 Sn1372; Calibrated: 2014/06/18

Phantom: ELI v5.0 TP1207; Type: QDOVA001BB; Serial: TP:1207

Measurement SW: DASY52, Version 52.8 (8); SEMCAD X Version 14.6.10 (7331)

Area Scan 2 2 2 2 (121x81x1): Interpolated grid: dx=1.500 mm, dy=1.500 mm

Maximum value of SAR (interpolated) = 0.0384 W/kg

Zoom Scan 2 (7x7x7)/Cube 0: Measurement grid: dx=5mm, dy=5mm, dz=5mm

Reference Value = 6.279 V/m; Power Drift = 0.05 dB

Peak SAR (extrapolated) = 0.0410 W/kg

SAR(1 g) = 0.032 W/kg; SAR(10 g) = 0.024 W/kg

Maximum value of SAR (measured) = 0.0372 W/kg

