

**Para WCDMA Band II RMC 12.2k Edge 1 tilt High ch**

Communication System: UID 0, WCDMA (0); Communication System Band: Band II; Frequency: 1907.6 MHz; Duty Cycle: 1:1

Medium parameters used:  $f = 1908$  MHz;  $\sigma = 1.549$  S/m;  $\epsilon_r = 53.291$ ;  $\rho = 1000$  kg/m<sup>3</sup>

Phantom section: Flat Section

Measurement Standard: DASY5 (IEEE/IEC/ANSI C63.19-2007)

DASY5 Configuration

Probe: EX3DV4 - SN3922; ConvF(7.85, 7.85, 7.85); Calibrated: 2014/06/13;  $\{\text{Probe: Calibration Date}\}$

Sensor-Surface: 2mm (Mechanical Surface Detection (Locations From Previous Scan Used)),

Sensor-Surface: 2mm (Mechanical Surface Detection)

Electronics: DAE4 Sn1372; Calibrated: 2014/06/18

Phantom: ELI v5.0 TP1207; Type: QDOVA001BB; Serial: TP:1207

Measurement SW: DASY52, Version 52.8 (8);

**Area Scan 3 2 2 (61x81x1):** Interpolated grid: dx=1.500 mm, dy=1.500 mm

Maximum value of SAR (interpolated) = 0.696 W/kg

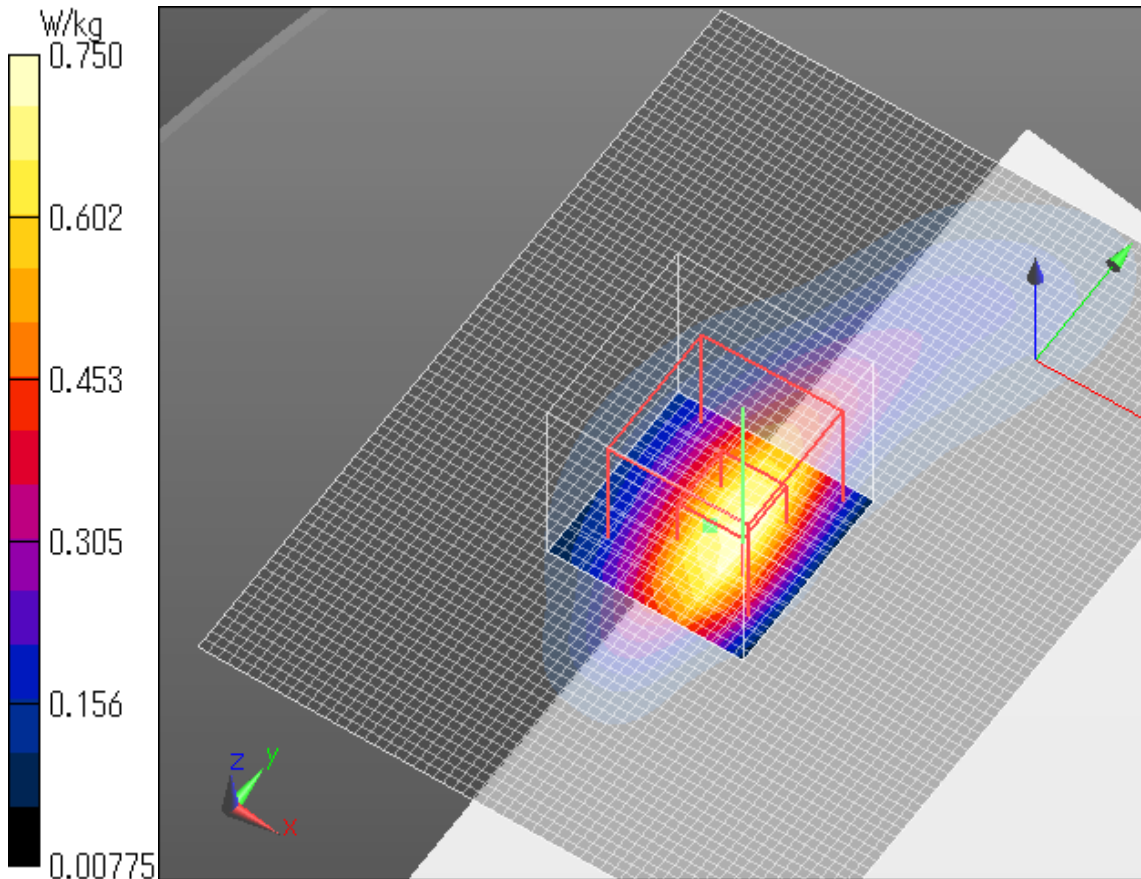
**Zoom Scan (7x7x7)/Cube 0:** Measurement grid: dx=5mm, dy=5mm, dz=5mm

Reference Value = 21.32 V/m; Power Drift = -0.07 dB

Peak SAR (extrapolated) = 1.02 W/kg

**SAR(1 g) = 0.526 W/kg; SAR(10 g) = 0.258 W/kg**

Maximum value of SAR (measured) = 0.750 W/kg



**Para WCDMA Band II RMC 12.2k Edge 2 tilt High ch**

Communication System: UID 0, WCDMA (0); Communication System Band: Band II; Frequency: 1852.4 MHz; Duty Cycle: 1:1

Medium parameters used (interpolated):  $f = 1852.4$  MHz;  $\sigma = 1.527$  S/m;  $\epsilon_r = 53.468$ ;  $\rho = 1000$  kg/m<sup>3</sup>

Phantom section: Flat Section

Measurement Standard: DASY5 (IEEE/IEC/ANSI C63.19-2007)

DASY5 Configuration

Probe: EX3DV4 - SN3922; ConvF(7.85, 7.85, 7.85); Calibrated: 2014/06/13;  $\{\text{Probe: Calibration Date}\}$

Sensor-Surface: 2mm (Mechanical Surface Detection)

Electronics: DAE4 Sn1372; Calibrated: 2014/06/18

Phantom: ELI v5.0 TP1207; Type: QDOVA001BB; Serial: TP:1207

Measurement SW: DASY52, Version 52.8 (8);

**Area Scan 2 2 (121x61x1):** Interpolated grid: dx=1.500 mm, dy=1.500 mm

[Info: Interpolated medium parameters used for SAR evaluation.](#)

Maximum value of SAR (interpolated) = 0.0197 W/kg

**Zoom Scan (7x7x7)/Cube 0:** Measurement grid: dx=5mm, dy=5mm, dz=5mm

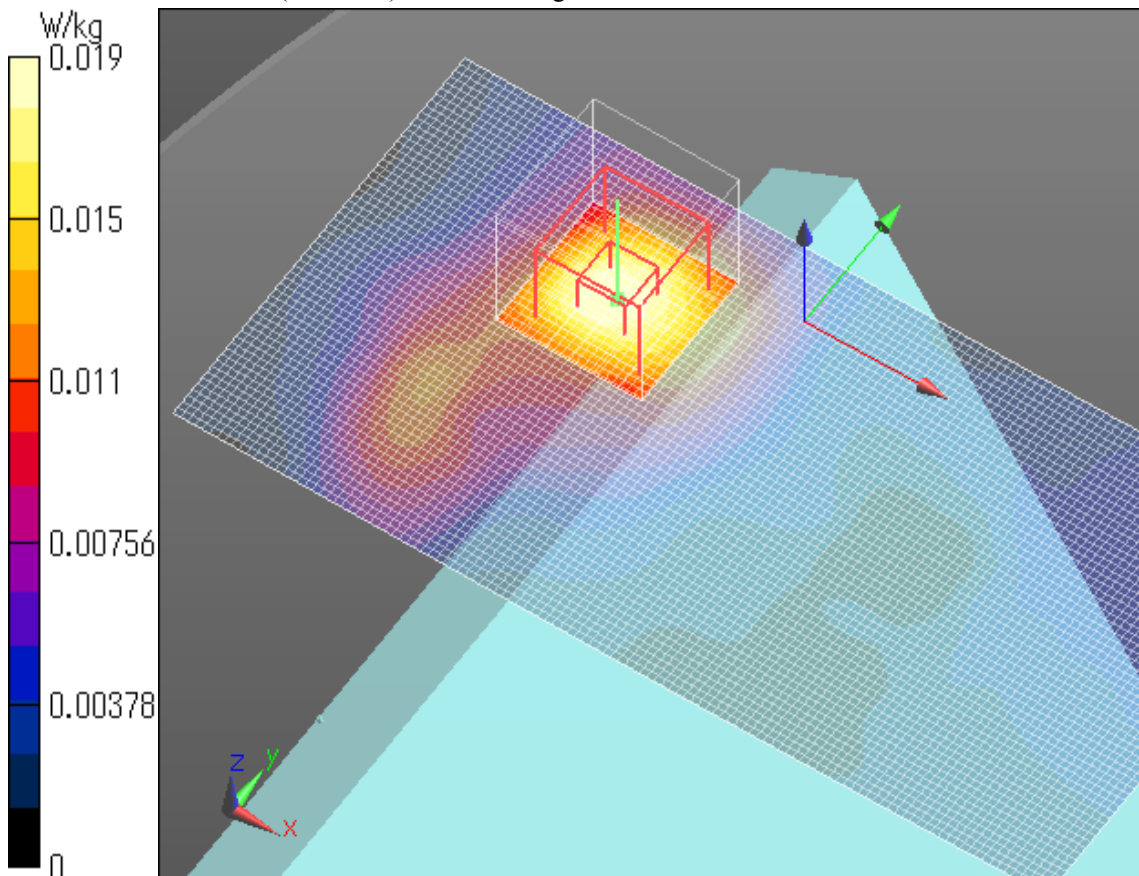
Reference Value = 3.591 V/m; Power Drift = -0.08 dB

Peak SAR (extrapolated) = 0.0240 W/kg

**SAR(1 g) = 0.014 W/kg; SAR(10 g) = 0.00901 W/kg**

[Info: Interpolated medium parameters used for SAR evaluation.](#)

Maximum value of SAR (measured) = 0.0189 W/kg



**Para WCDMA Band II RMC 12.2k Edge 3 tilt Low ch**

Communication System: UID 0, WCDMA (0); Communication System Band: Band II; Frequency: 1852.4 MHz; Duty Cycle: 1:1

Medium parameters used (interpolated):  $f = 1852.4$  MHz;  $\sigma = 1.527$  S/m;  $\epsilon_r = 53.468$ ;  $\rho = 1000$  kg/m<sup>3</sup>

Phantom section: Flat Section

Measurement Standard: DASYS (IEEE/IEC/ANSI C63.19-2007)

DASY5 Configuration

Probe: EX3DV4 - SN3922; ConvF(7.85, 7.85, 7.85); Calibrated: 2014/06/13;  $\{\text{Probe: Calibration Date}\}$

Sensor-Surface: 2mm (Mechanical Surface Detection (Locations From Previous Scan Used)),

Sensor-Surface: 2mm (Mechanical Surface Detection)

Electronics: DAE4 Sn1372; Calibrated: 2014/06/18

Phantom: ELI v5.0 TP1207; Type: QDOVA001BB; Serial: TP:1207

Measurement SW: DASYS2, Version 52.8 (8);

**Area Scan (141x81x1):** Interpolated grid: dx=1.500 mm, dy=1.500 mm

[Info: Interpolated medium parameters used for SAR evaluation.](#)

Maximum value of SAR (interpolated) = 0.0192 W/kg

**Zoom Scan (7x7x7)/Cube 0:** Measurement grid: dx=5mm, dy=5mm, dz=5mm

Reference Value = 3.666 V/m; Power Drift = -0.08 dB

Peak SAR (extrapolated) = 0.0250 W/kg

**SAR(1 g) = 0.015 W/kg; SAR(10 g) = 0.00946 W/kg**

[Info: Interpolated medium parameters used for SAR evaluation.](#)

Maximum value of SAR (measured) = 0.0202 W/kg

