

WCDMA Band IV RMC 12.2k Edge 1 tilt Low ch

Communication System: UID 0, WCDMA (0); Communication System Band: Band IV; Frequency: 1712.4 MHz; Duty Cycle: 1:1

Medium parameters used (interpolated): $f = 1712.4$ MHz; $\sigma = 1.458$ S/m; $\epsilon_r = 53.026$; $\rho = 1000$ kg/m³

Phantom section: Flat Section

Measurement Standard: DASY5 (IEEE/IEC/ANSI C63.19-2007)

DASY5 Configuration

Probe: EX3DV4 - SN3922; ConvF(8.09, 8.09, 8.09); Calibrated: 2014/06/13; $\{Probe: Calibration Date\}$

Sensor-Surface: 2mm (Mechanical Surface Detection (Locations From Previous Scan Used)),

Sensor-Surface: 2mm (Mechanical Surface Detection)

Electronics: DAE4 Sn1372; Calibrated: 2014/06/18

Phantom: ELI v5.0 TP1207; Type: QDOVA001BB; Serial: TP:1207

Measurement SW: DASY52, Version 52.8 (8);

Area Scan 3 2 2 (61x81x1): Interpolated grid: dx=1.500 mm, dy=1.500 mm

[Info: Interpolated medium parameters used for SAR evaluation.](#)

Maximum value of SAR (interpolated) = 0.451 W/kg

Zoom Scan (7x7x7)/Cube 0: Measurement grid: dx=5mm, dy=5mm, dz=5mm

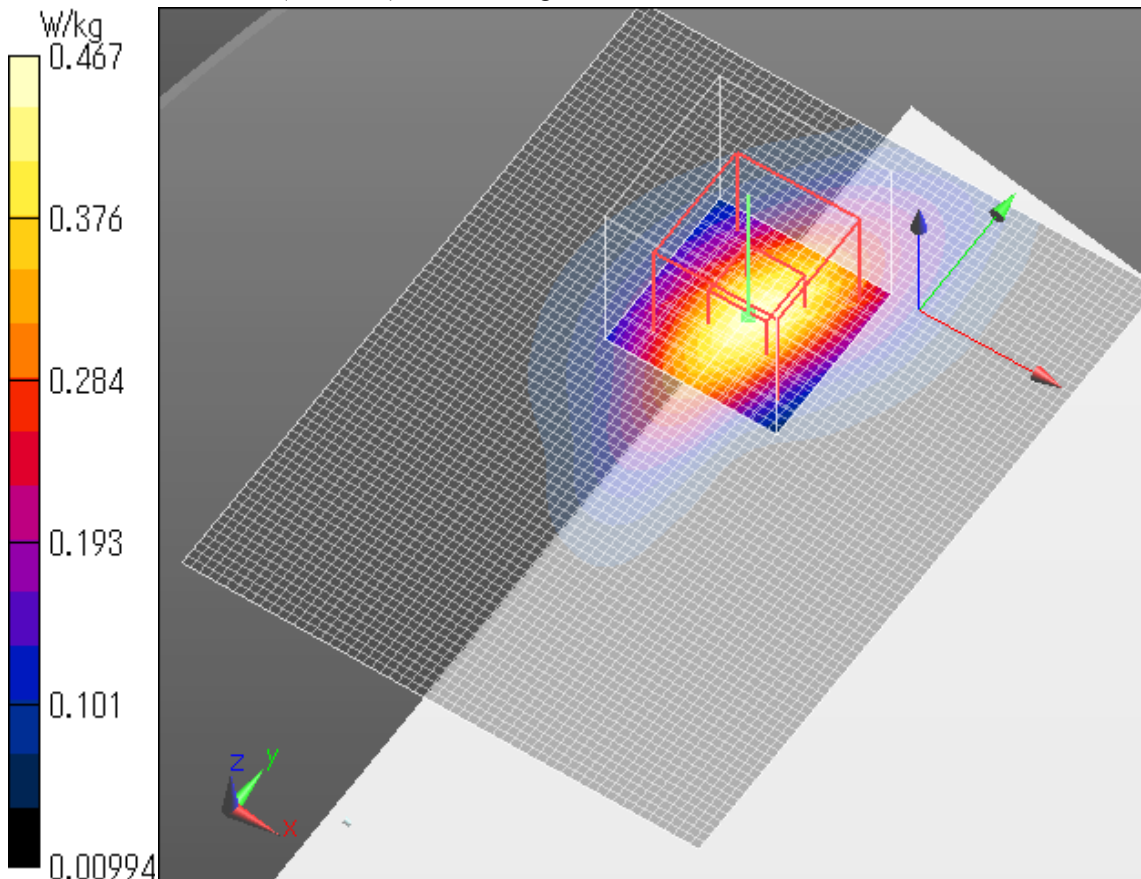
Reference Value = 18.18 V/m; Power Drift = -0.08 dB

Peak SAR (extrapolated) = 0.588 W/kg

SAR(1 g) = 0.343 W/kg; SAR(10 g) = 0.188 W/kg

[Info: Interpolated medium parameters used for SAR evaluation.](#)

Maximum value of SAR (measured) = 0.467 W/kg



WCDMA Band IV RMC 12.2k Edge 2 tilt Mid ch

Communication System: UID 0, WCDMA (0); Communication System Band: Band IV; Frequency: 1732.6 MHz; Duty Cycle: 1:1

Medium parameters used: $f = 1733$ MHz; $\sigma = 1.479$ S/m; $\epsilon_r = 52.863$; $\rho = 1000$ kg/m³

Phantom section: Flat Section

Measurement Standard: DASYS (IEEE/IEC/ANSI C63.19-2007)

DASY5 Configuration

Probe: EX3DV4 - SN3922; ConvF(8.09, 8.09, 8.09); Calibrated: 2014/06/13; $\{\text{Probe: Calibration Date}\}$

Sensor-Surface: 2mm (Mechanical Surface Detection)

Electronics: DAE4 Sn1372; Calibrated: 2014/06/18

Phantom: ELI v5.0 TP1207; Type: QDOVA001BB; Serial: TP:1207

Measurement SW: DASYS2, Version 52.8 (8);

Area Scan 2 2 (121x61x1): Interpolated grid: $dx=1.500$ mm, $dy=1.500$ mm

Maximum value of SAR (interpolated) = 0.0207 W/kg

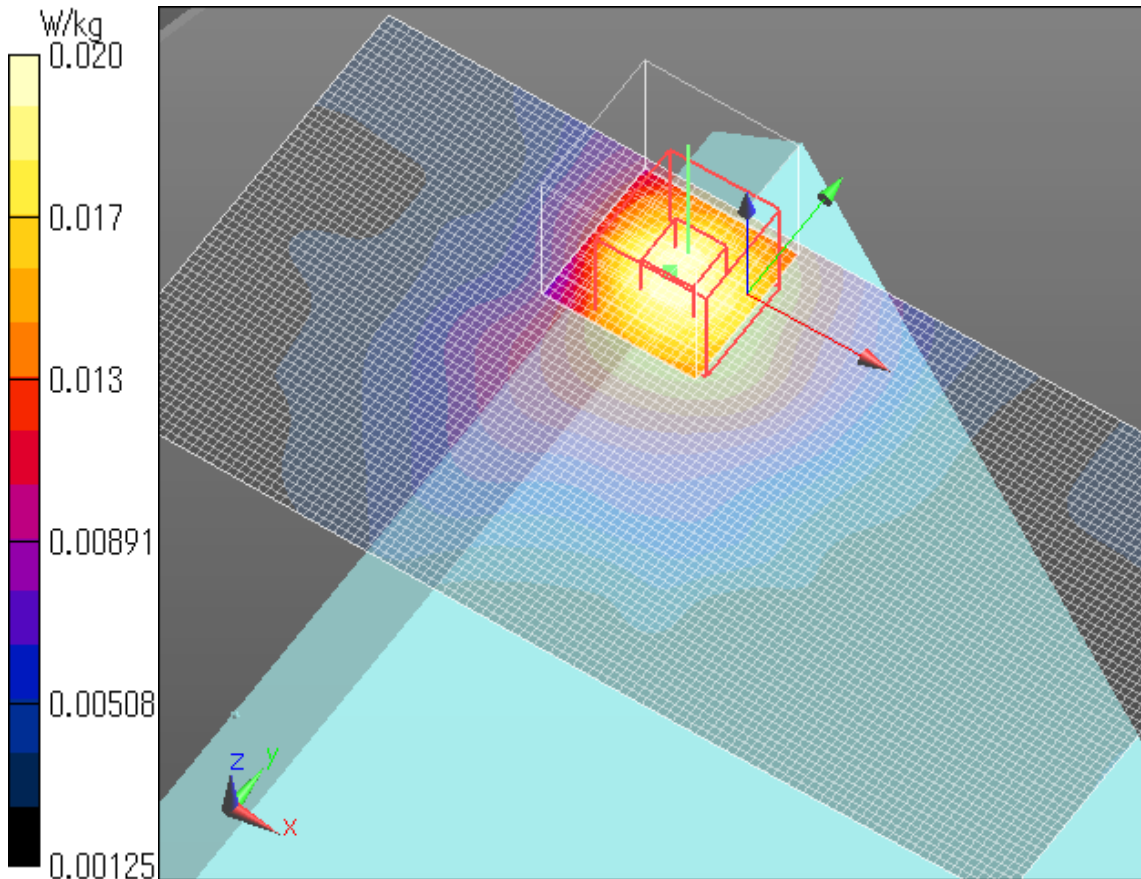
Zoom Scan (7x7x7)/Cube 0: Measurement grid: $dx=5$ mm, $dy=5$ mm, $dz=5$ mm

Reference Value = 3.752 V/m; Power Drift = 0.09 dB

Peak SAR (extrapolated) = 0.0240 W/kg

SAR(1 g) = 0.016 W/kg; SAR(10 g) = 0.011 W/kg

Maximum value of SAR (measured) = 0.0204 W/kg



WCDMA Band IV RMC 12.2k Edge 3 tilt Mid ch

Communication System: UID 0, WCDMA (0); Communication System Band: Band IV; Frequency: 1732.6 MHz; Duty Cycle: 1:1

Medium parameters used: $f = 1733$ MHz; $\sigma = 1.479$ S/m; $\epsilon_r = 52.863$; $\rho = 1000$ kg/m³

Phantom section: Flat Section

Measurement Standard: DASY5 (IEEE/IEC/ANSI C63.19-2007)

DASY5 Configuration

Probe: EX3DV4 - SN3922; ConvF(8.09, 8.09, 8.09); Calibrated: 2014/06/13; $\{Probe: Calibration Date\}$

Sensor-Surface: 2mm (Mechanical Surface Detection (Locations From Previous Scan Used)),

Sensor-Surface: 2mm (Mechanical Surface Detection)

Electronics: DAE4 Sn1372; Calibrated: 2014/06/18

Phantom: ELI v5.0 TP1207; Type: QDOVA001BB; Serial: TP:1207

Measurement SW: DASY52, Version 52.8 (8);

Area Scan (141x81x1): Interpolated grid: dx=1.500 mm, dy=1.500 mm

Maximum value of SAR (interpolated) = 0.0253 W/kg

Zoom Scan (7x7x7)/Cube 0: Measurement grid: dx=5mm, dy=5mm, dz=5mm

Reference Value = 3.975 V/m; Power Drift = -0.15 dB

Peak SAR (extrapolated) = 0.0270 W/kg

SAR(1 g) = 0.017 W/kg; SAR(10 g) = 0.011 W/kg

Maximum value of SAR (measured) = 0.0220 W/kg

