

PCS1900 GPRS2slots Edge 1 tilt High ch

Communication System: UID 0, Generic GSM (0); Communication System Band: PCS 1900 (1850.0 - 1910.0 MHz); Frequency: 1909.8 MHz; Duty Cycle: 1:4.19952

Medium parameters used: $f = 1910$ MHz; $\sigma = 1.554$ S/m; $\epsilon_r = 53.355$; $\rho = 1000$ kg/m³

Phantom section: Flat Section

Measurement Standard: DASY5 (IEEE/IEC/ANSI C63.19-2007)

DASY5 Configuration

Probe: EX3DV4 - SN3922; ConvF(7.85, 7.85, 7.85); Calibrated: 2014/06/13; $\{Probe: Calibration Date\}$

Sensor-Surface: 2mm (Mechanical Surface Detection (Locations From Previous Scan Used)),

Sensor-Surface: 2mm (Mechanical Surface Detection)

Electronics: DAE4 Sn1372; Calibrated: 2014/06/18

Phantom: ELI v5.0 TP1207; Type: QDOVA001BB; Serial: TP:1207

Measurement SW: DASY52, Version 52.8 (8);

Area Scan 3 2 2 (61x81x1): Interpolated grid: dx=1.500 mm, dy=1.500 mm

Maximum value of SAR (interpolated) = 0.545 W/kg

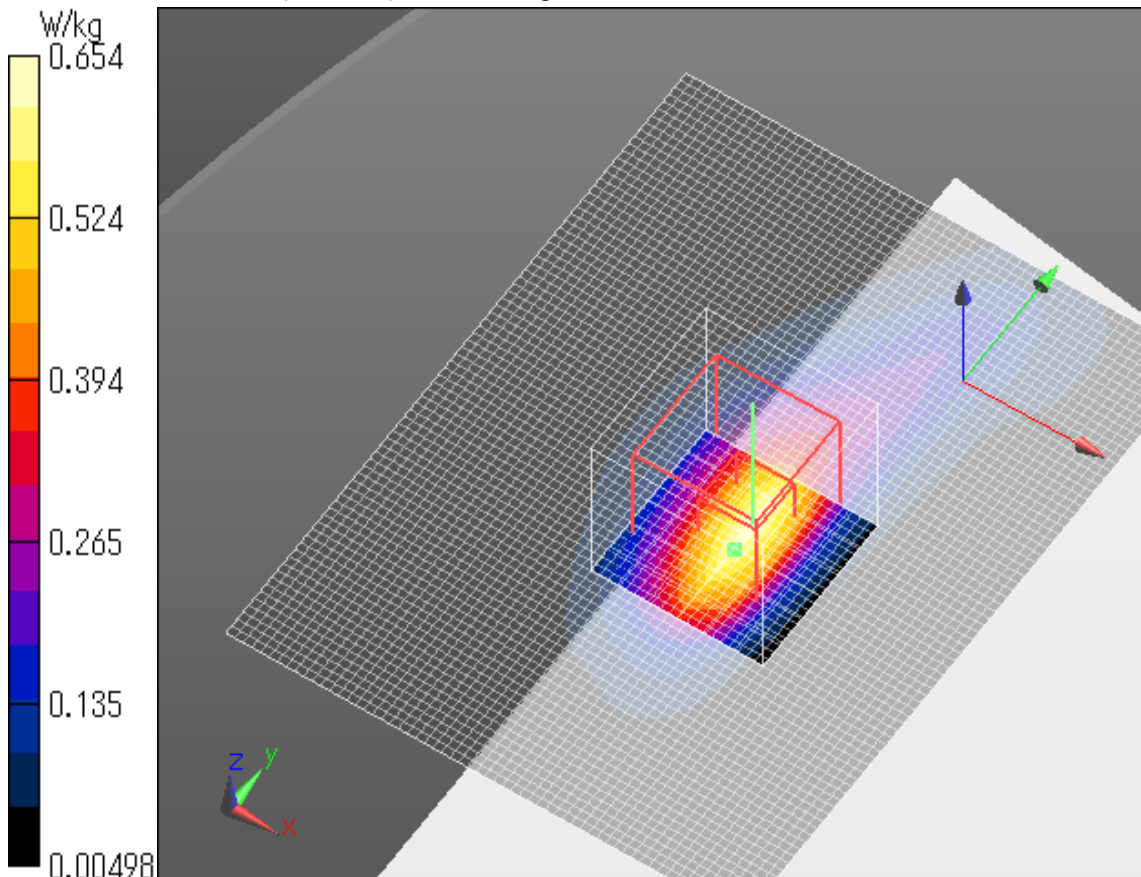
Zoom Scan (7x7x7)/Cube 0: Measurement grid: dx=5mm, dy=5mm, dz=5mm

Reference Value = 20.51 V/m; Power Drift = -0.05 dB

Peak SAR (extrapolated) = 0.841 W/kg

SAR(1 g) = 0.448 W/kg; SAR(10 g) = 0.221 W/kg

Maximum value of SAR (measured) = 0.654 W/kg



PCS1900 GPRS2slots Edge 2 tilt Low ch

Communication System: UID 0, Generic GSM (0); Communication System Band: PCS 1900 (1850.0 - 1910.0 MHz); Frequency: 1850.2 MHz; Duty Cycle: 1:4.19952

Medium parameters used (interpolated): $f = 1850.2$ MHz; $\sigma = 1.527$ S/m; $\epsilon_r = 53.435$; $\rho = 1000$ kg/m³

Phantom section: Flat Section

Measurement Standard: DASYS (IEEE/IEC/ANSI C63.19-2007)

DASY5 Configuration

Probe: EX3DV4 - SN3922; ConvF(7.85, 7.85, 7.85); Calibrated: 2014/06/13; $\{\text{Probe: Calibration Date}\}$

Sensor-Surface: 2mm (Mechanical Surface Detection)

Electronics: DAE4 Sn1372; Calibrated: 2014/06/18

Phantom: ELI v5.0 TP1207; Type: QDOVA001BB; Serial: TP:1207

Measurement SW: DASYS2, Version 52.8 (8);

Area Scan 2 2 (121x61x1): Interpolated grid: dx=1.500 mm, dy=1.500 mm

[Info: Interpolated medium parameters used for SAR evaluation.](#)

Maximum value of SAR (interpolated) = 0.0128 W/kg

Zoom Scan (7x7x7)/Cube 0: Measurement grid: dx=5mm, dy=5mm, dz=5mm

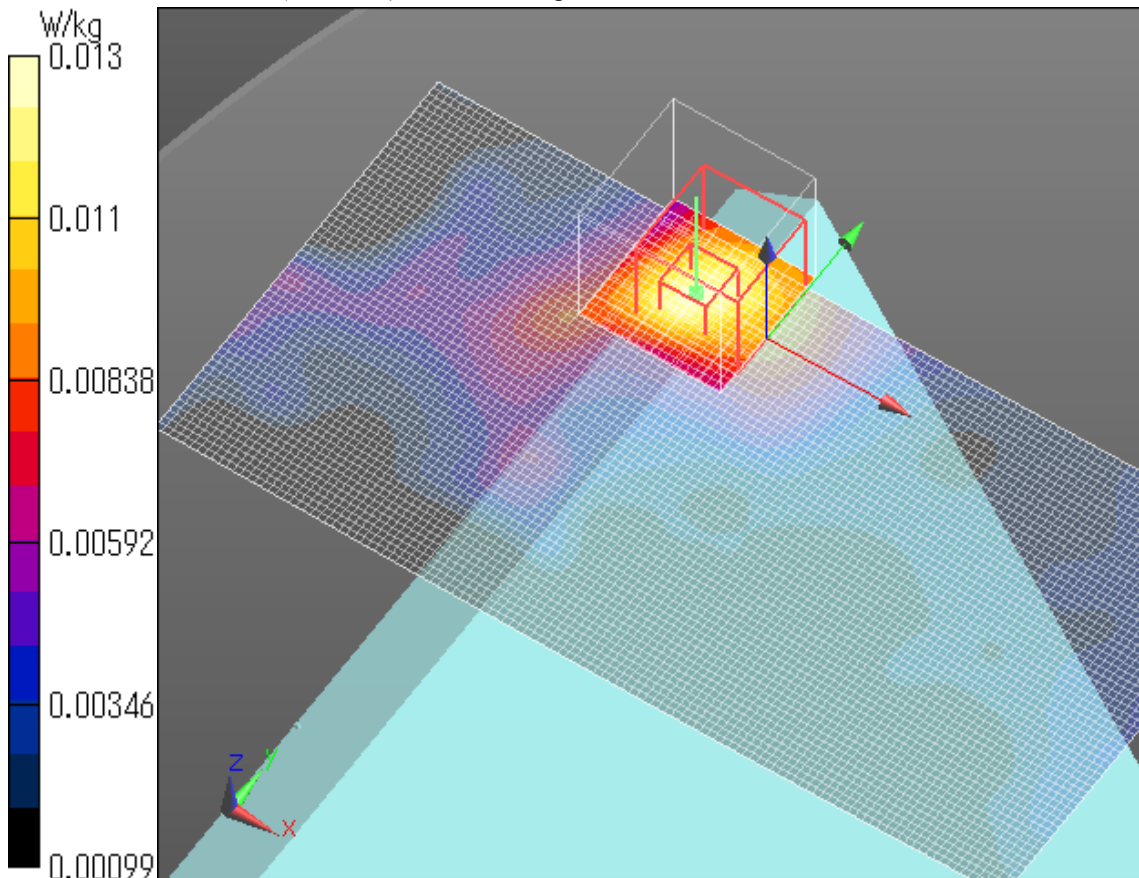
Reference Value = 2.985 V/m; Power Drift = -0.17 dB

Peak SAR (extrapolated) = 0.0170 W/kg

SAR(1 g) = 0.00972 W/kg; SAR(10 g) = 0.00608 W/kg

[Info: Interpolated medium parameters used for SAR evaluation.](#)

Maximum value of SAR (measured) = 0.0133 W/kg



PCS1900 GPRS2slots Edge 3 tilt Low ch

Communication System: UID 0, Generic GSM (0); Communication System Band: PCS 1900 (1850.0 - 1910.0 MHz); Frequency: 1850.2 MHz; Duty Cycle: 1:4.19952

Medium parameters used (interpolated): $f = 1850.2$ MHz; $\sigma = 1.527$ S/m; $\epsilon_r = 53.435$; $\rho = 1000$ kg/m³

Phantom section: Flat Section

Measurement Standard: DASY5 (IEEE/IEC/ANSI C63.19-2007)

DASY5 Configuration

Probe: EX3DV4 - SN3922; ConvF(7.85, 7.85, 7.85); Calibrated: 2014/06/13; $\{$ Probe: Calibration Date $\}$

Sensor-Surface: 2mm (Mechanical Surface Detection (Locations From Previous Scan Used)),

Sensor-Surface: 2mm (Mechanical Surface Detection)

Electronics: DAE4 Sn1372; Calibrated: 2014/06/18

Phantom: ELI v5.0 TP1207; Type: QDOVA001BB; Serial: TP:1207

Measurement SW: DASY52, Version 52.8 (8);

Area Scan (141x81x1): Interpolated grid: dx=1.500 mm, dy=1.500 mm

[Info: Interpolated medium parameters used for SAR evaluation.](#)

Maximum value of SAR (interpolated) = 0.0169 W/kg

Zoom Scan (7x7x7)/Cube 0: Measurement grid: dx=5mm, dy=5mm, dz=5mm

Reference Value = 3.340 V/m; Power Drift = -0.12 dB

Peak SAR (extrapolated) = 0.0210 W/kg

SAR(1 g) = 0.013 W/kg; SAR(10 g) = 0.00768 W/kg

[Info: Interpolated medium parameters used for SAR evaluation.](#)

Maximum value of SAR (measured) = 0.0172 W/kg

