

17. External Photos

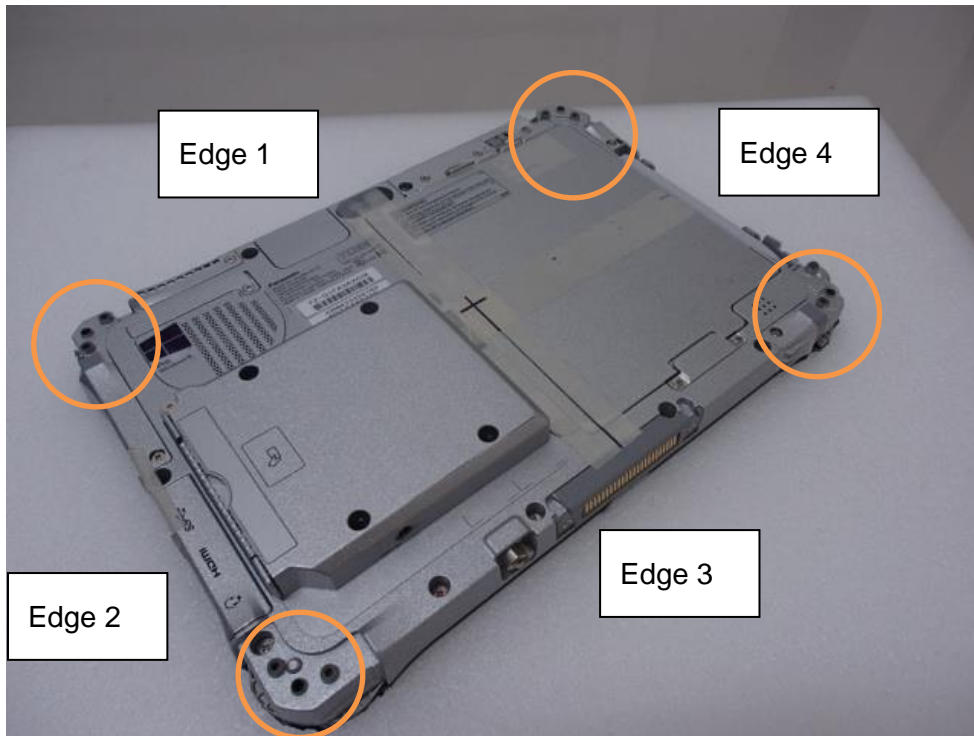
<Front-1>



< Front-2>

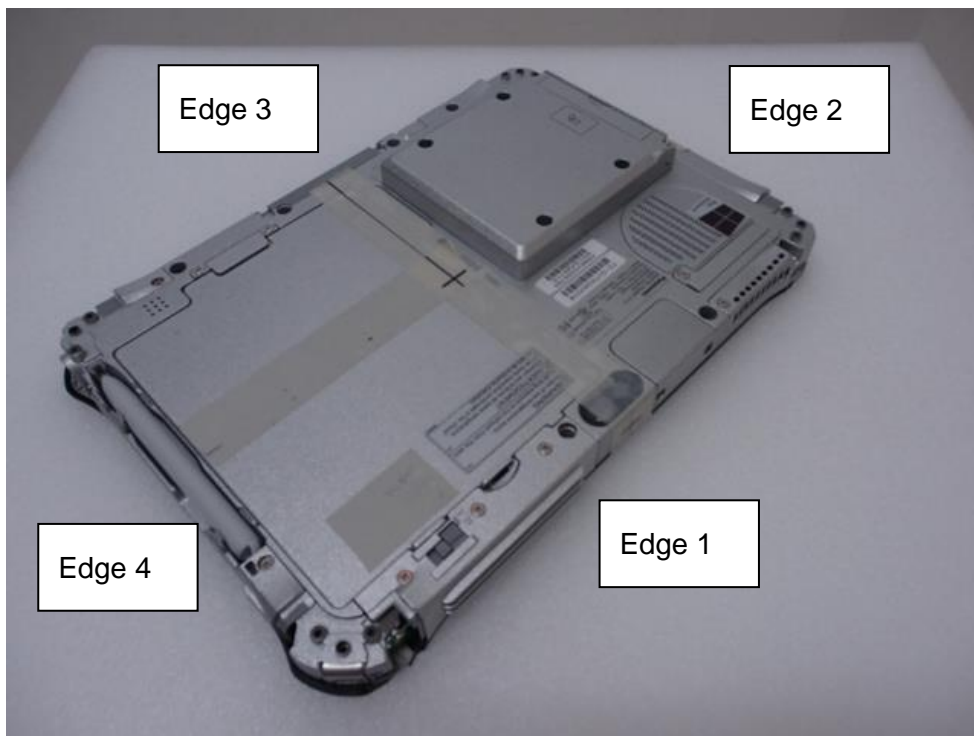


< Rear-1 >



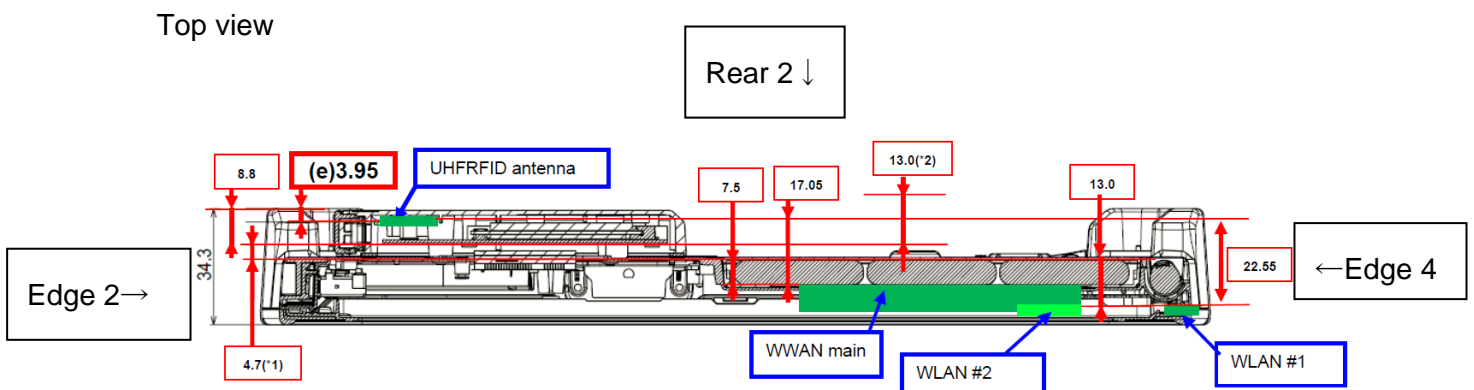
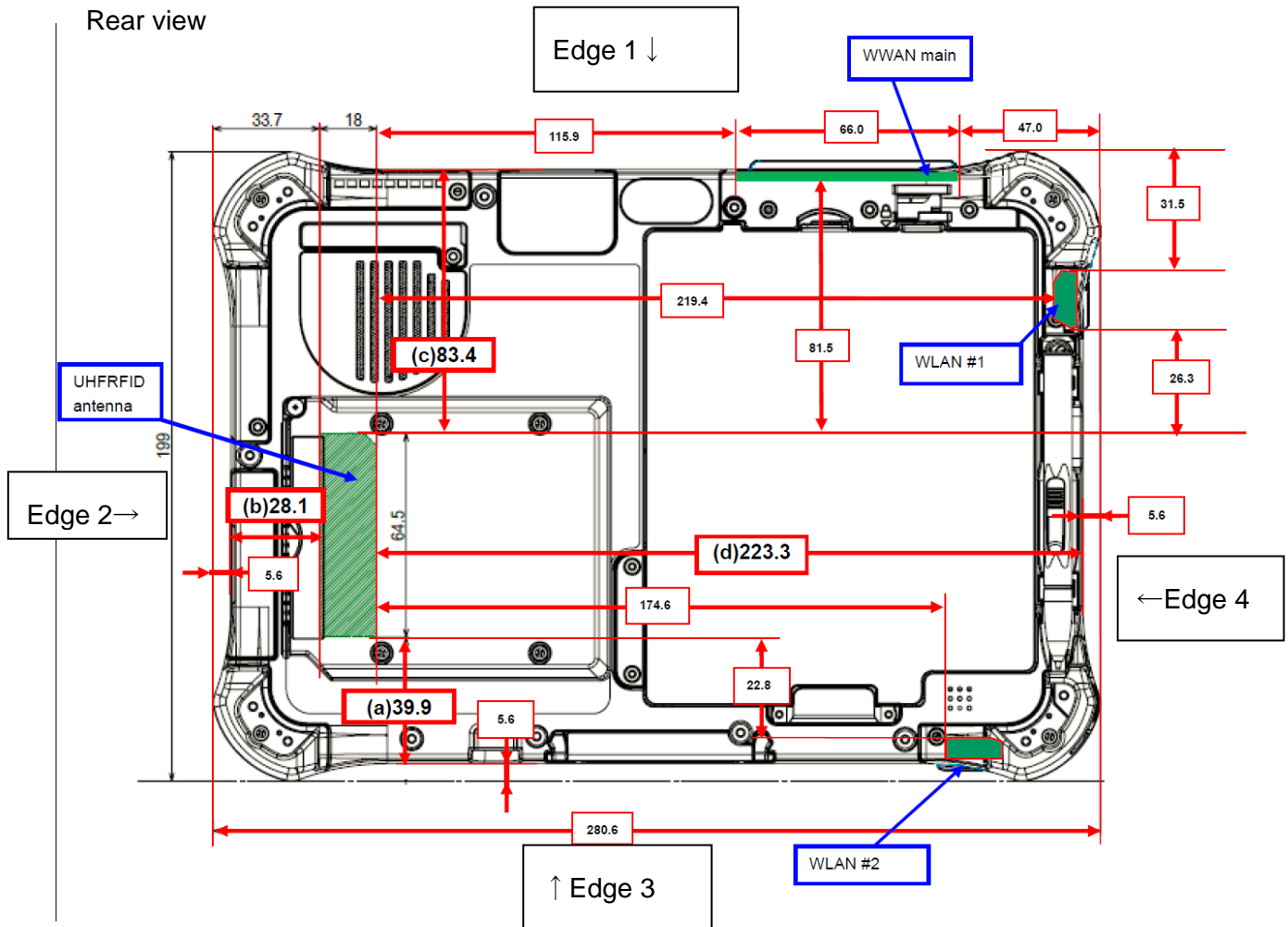
Because such protrusions between the outer housing and a flat phantom are > 5 mm, this EUT was measured in the state with which the corners were shaved.

< Rear-2 >



18. Antenna Dimensions & Separation Distances

UHF-RFID Antenna location and distance



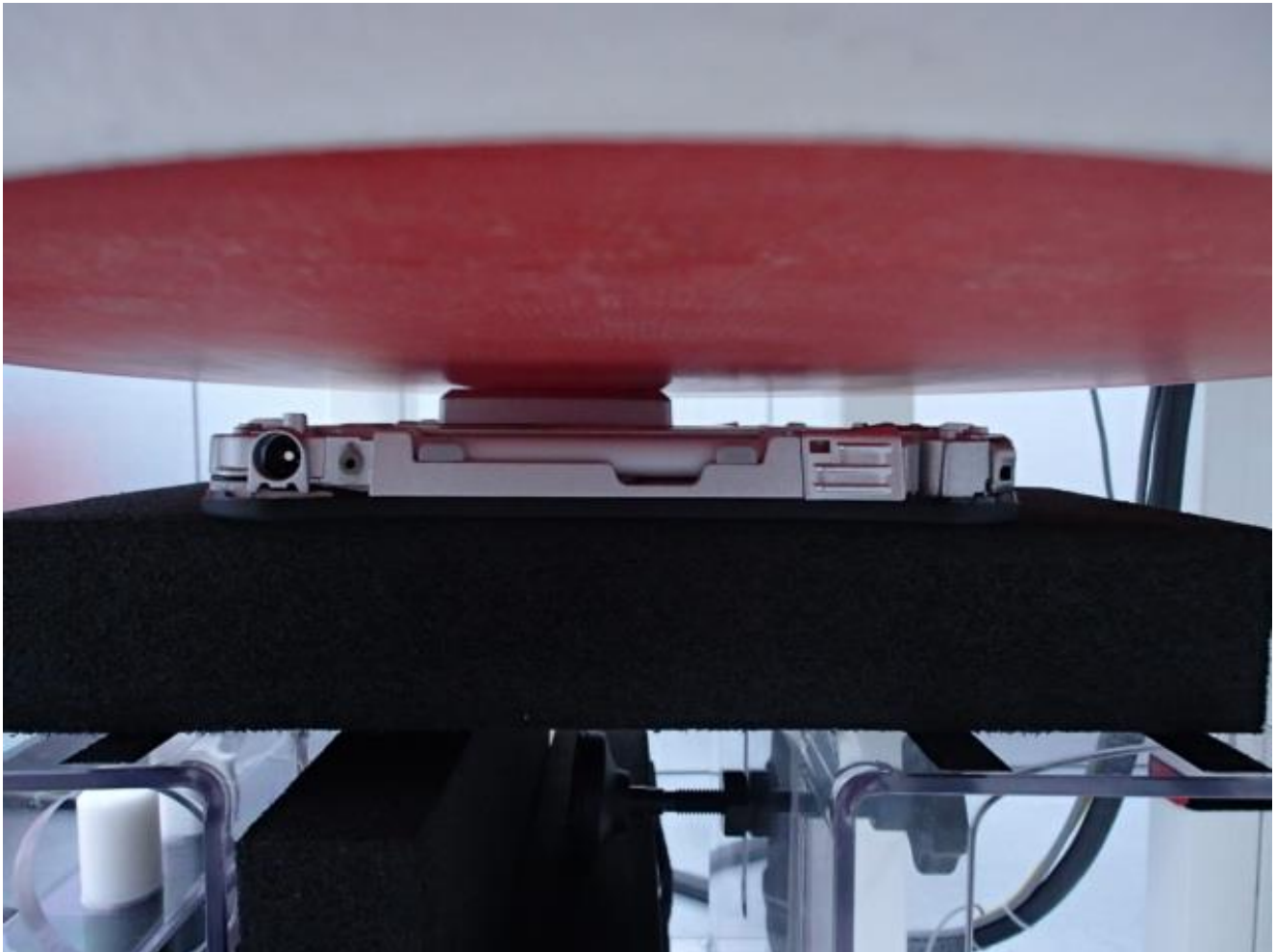
(*1) The height of 4.7mm is height of without UHF-RFID module.
 (*2) The height of 13.0mm is the trigger distance for proximity sensor of WWAN.

Front ↑

Page 145 of 153

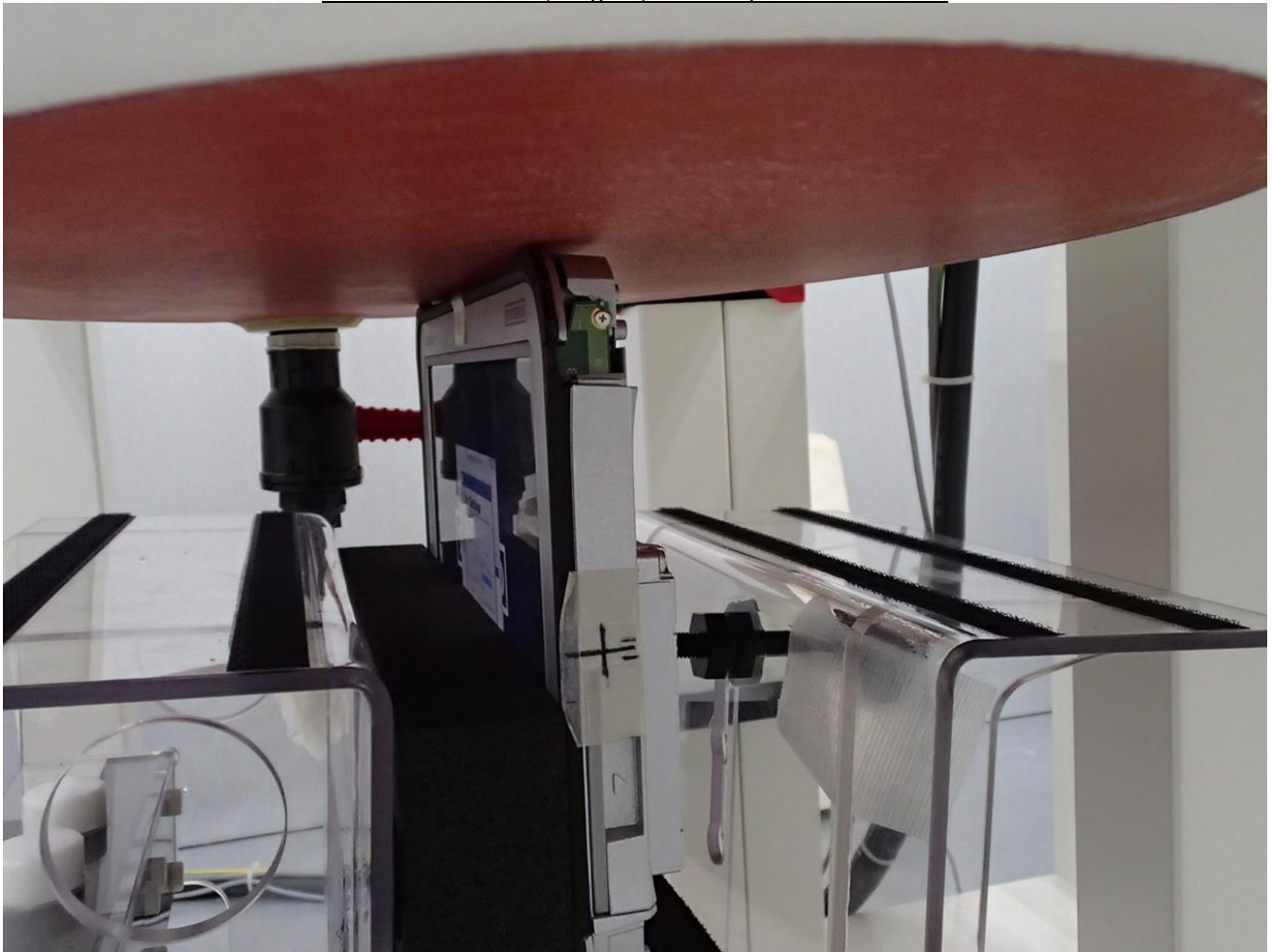
19. Setup Photos

UHF-RFID Antenna, Rear2, 0mm Separation Distance



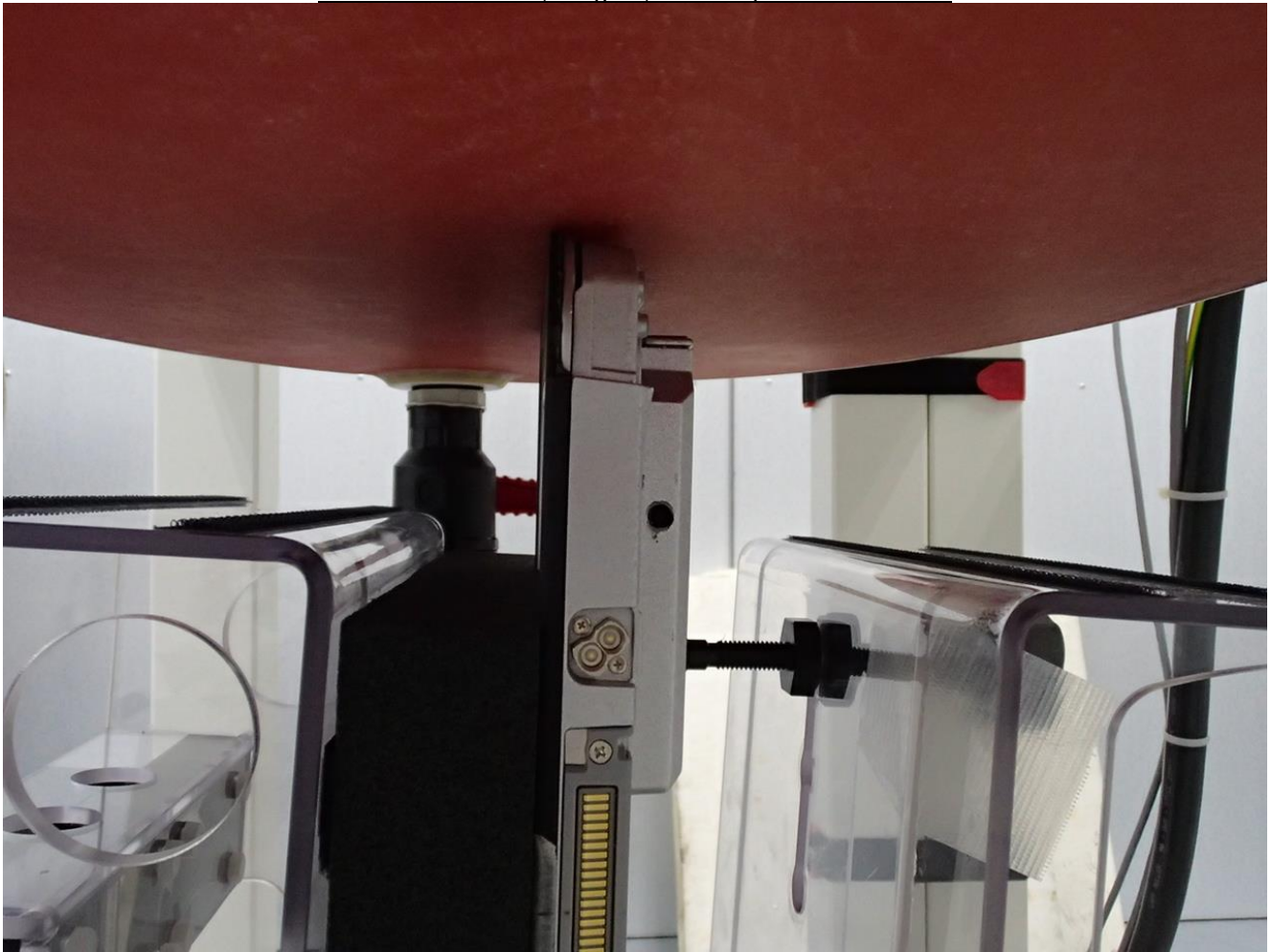
Side view

UHF-RFID Antenna, Edge 1, 0mm Separation Distance



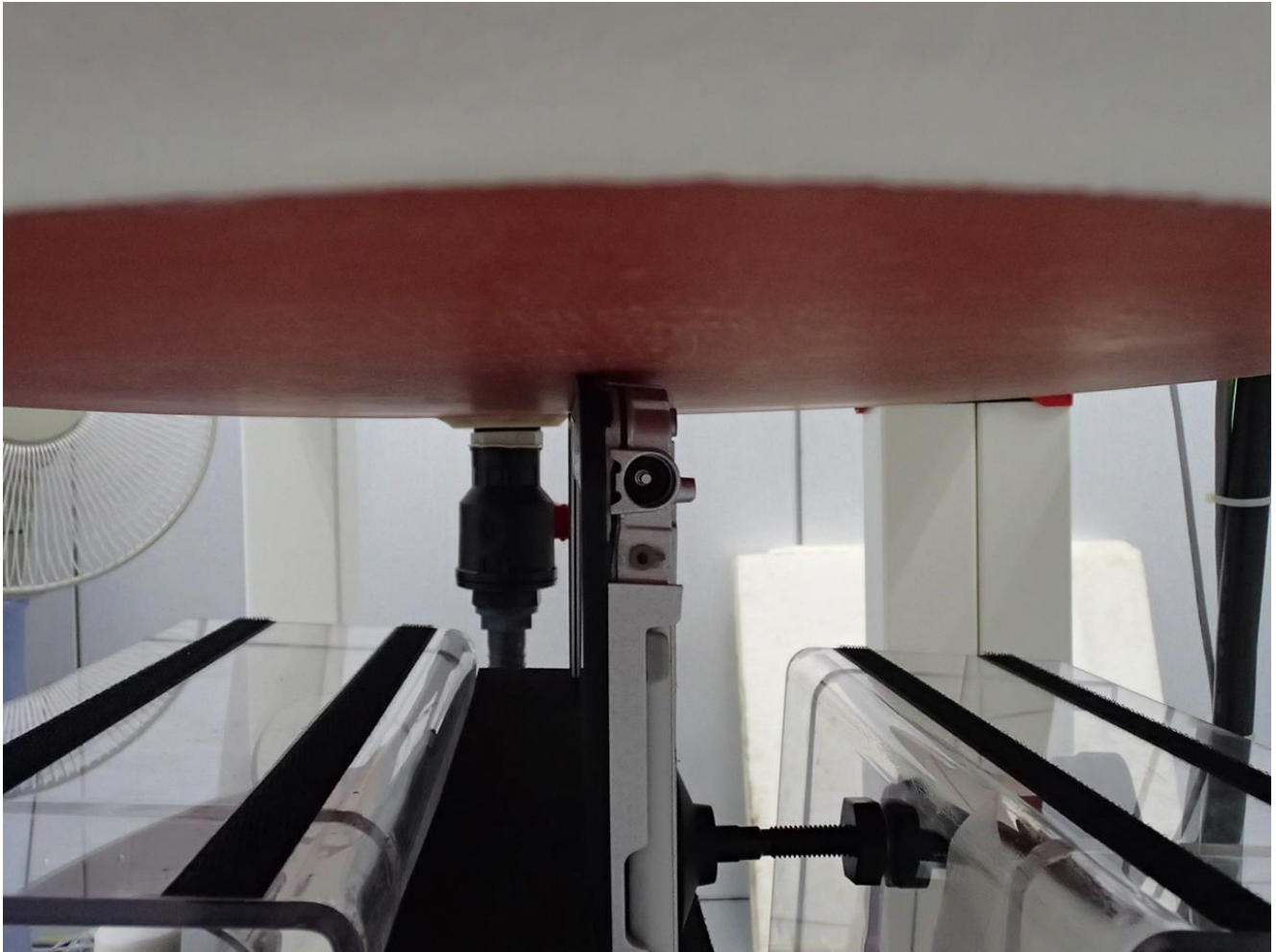
Side view

UHF-RFID Antenna, Edge 2, 0mm Separation Distance



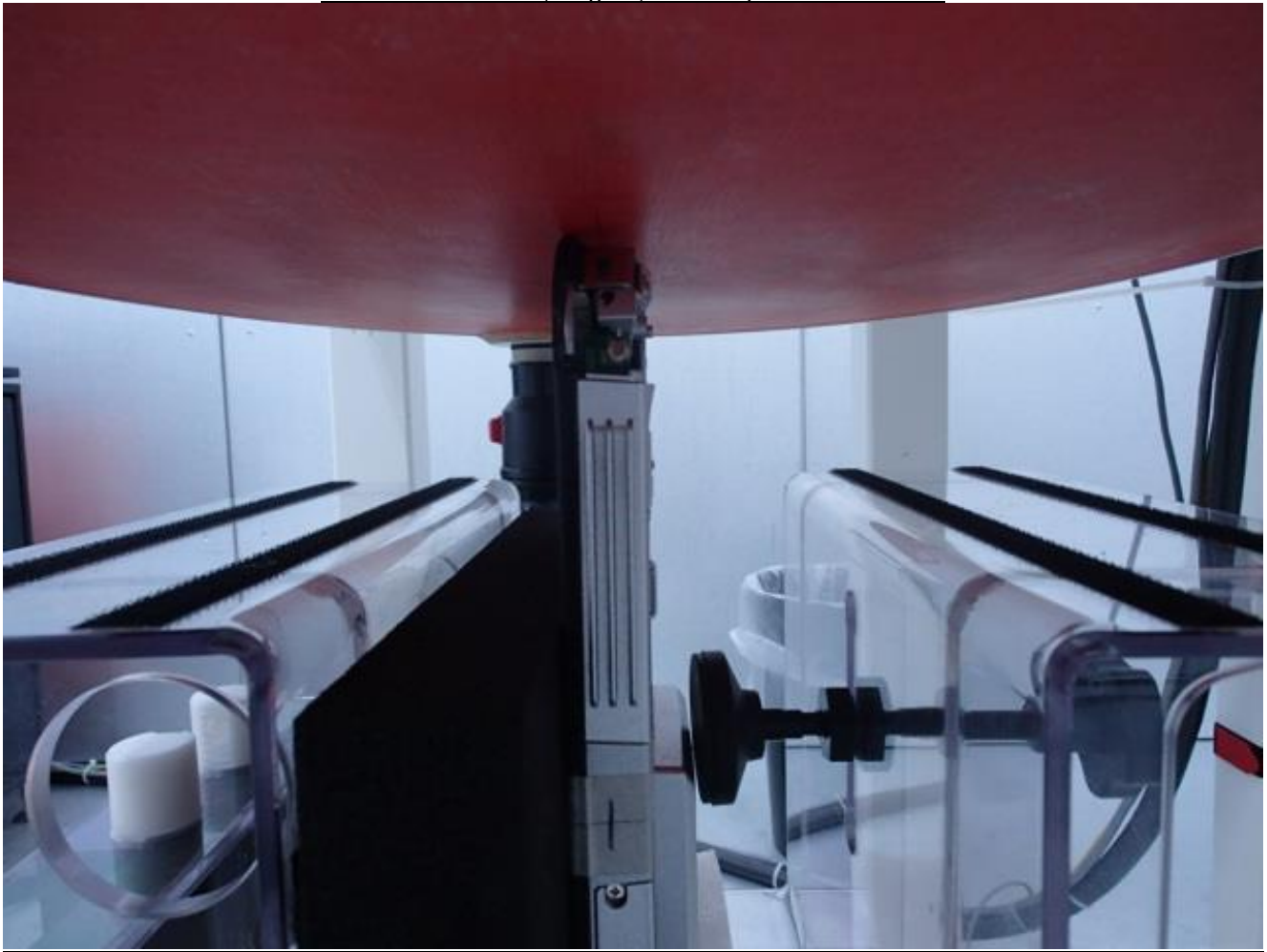
Side view

UHF-RFID Antenna, Edge 3, 0mm Separation Distance



Side view

UHF-RFID Antenna, Edge 4, 0mm Separation Distance



Side view

UHF-RFID Antenna Edge1 tilt, 0mm Separation Distance



Side view

UHF-RFID Antenna Edge2 tilt, 0mm Separation Distance



Side view

UHF-RFID Antenna Edge3 tilt, 0mm Separation Distance



Side view

END OF REPORT