

Para LTE 25 20MHz QPSK 50RB 1RB Allocation 0 start Edge 1 tilt Mid ch

Communication System: UID 0, Generic LTE (0); Communication System Band: Band 25, E-UTRA/FDD (1850.0 - 1915.0 MHz); Frequency: 1882.5 MHz; Duty Cycle: 1:1
Medium parameters used (interpolated): $f = 1882.5$ MHz; $\sigma = 1.564$ S/m; $\epsilon_r = 53.393$; $\rho = 1000$ kg/m³
Phantom section: Flat Section
Measurement Standard: DASY5 (IEEE/IEC/ANSI C63.19-2007)
DASY5 Configuration
Probe: EX3DV4 - SN3922; ConvF(7.85, 7.85, 7.85); Calibrated: 2014/06/13; $\{\text{Probe: Calibration Date}\}$
Sensor-Surface: 2mm (Mechanical Surface Detection (Locations From Previous Scan Used)),
Sensor-Surface: 2mm (Mechanical Surface Detection)
Electronics: DAE4 Sn1372; Calibrated: 2014/06/18
Phantom: ELI v5.0 TP1207; Type: QDOVA001BB; Serial: TP:1207
Measurement SW: DASY52, Version 52.8 (8); SEMCAD X Version 14.6.10 (7331)

Area Scan 3 2 2 (61x81x1): Interpolated grid: dx=1.500 mm, dy=1.500 mm

[Info: Interpolated medium parameters used for SAR evaluation.](#)

Maximum value of SAR (interpolated) = 0.633 W/kg

Zoom Scan (7x7x7)/Cube 0: Measurement grid: dx=5mm, dy=5mm, dz=5mm

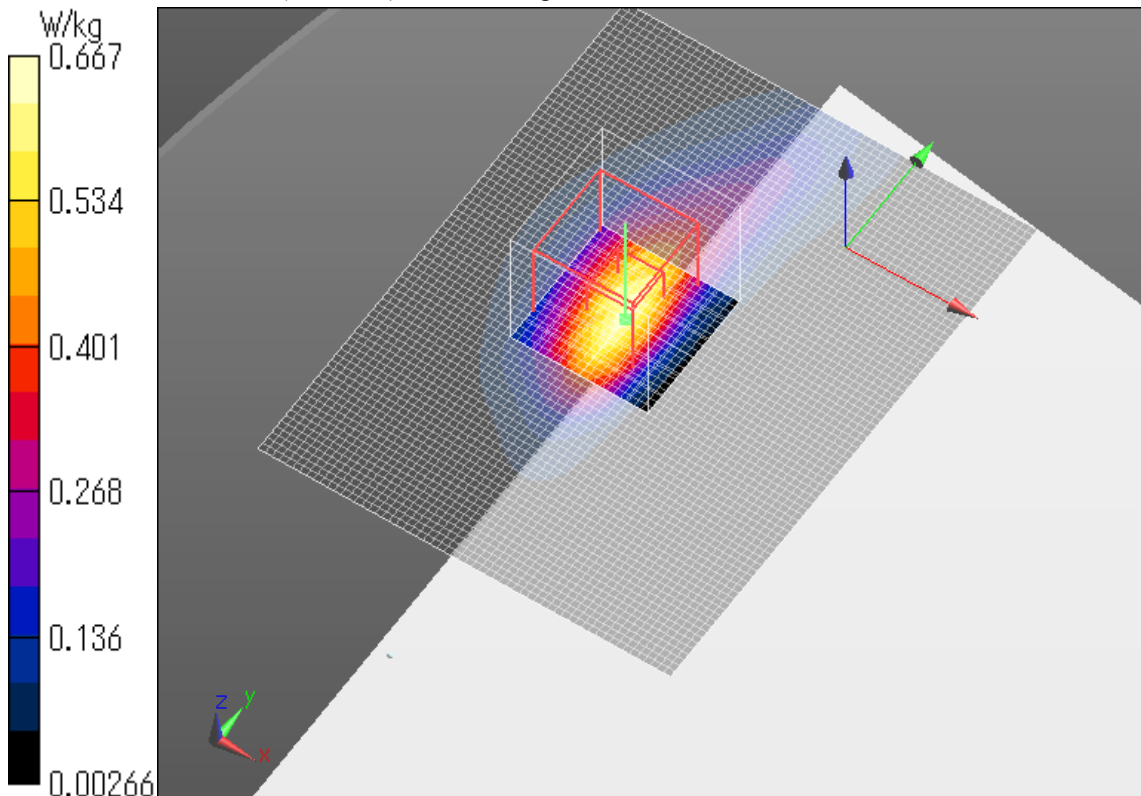
Reference Value = 20.99 V/m; Power Drift = 0.06 dB

Peak SAR (extrapolated) = 0.869 W/kg

SAR(1 g) = 0.464 W/kg; SAR(10 g) = 0.229 W/kg

[Info: Interpolated medium parameters used for SAR evaluation.](#)

Maximum value of SAR (measured) = 0.667 W/kg



LTE 25 20MHz QPSK 1RB Allocation 49 start Edge 2 tilt Mid ch

Communication System: UID 0, Generic LTE (0); Communication System Band: Band 25, E-UTRA/FDD (1850.0 - 1915.0 MHz); Frequency: 1882.5 MHz; Duty Cycle: 1:1
Medium parameters used (interpolated): $f = 1882.5$ MHz; $\sigma = 1.564$ S/m; $\epsilon_r = 53.393$; $\rho = 1000$ kg/m³
Phantom section: Flat Section
Measurement Standard: DASY5 (IEEE/IEC/ANSI C63.19-2007)
DASY5 Configuration
Probe: EX3DV4 - SN3922; ConvF(7.85, 7.85, 7.85); Calibrated: 2014/06/13; $\{\text{Probe: Calibration Date}\}$
Sensor-Surface: 2mm (Mechanical Surface Detection)
Electronics: DAE4 Sn1372; Calibrated: 2014/06/18
Phantom: ELI v5.0 TP1207; Type: QDOVA001BB; Serial: TP:1207
Measurement SW: DASY52, Version 52.8 (8); SEMCAD X Version 14.6.10 (7331)

Area Scan 2 2 (121x61x1): Interpolated grid: dx=1.500 mm, dy=1.500 mm

[Info: Interpolated medium parameters used for SAR evaluation.](#)

Maximum value of SAR (interpolated) = 0.0211 W/kg

Zoom Scan (7x7x7)/Cube 0: Measurement grid: dx=5mm, dy=5mm, dz=5mm

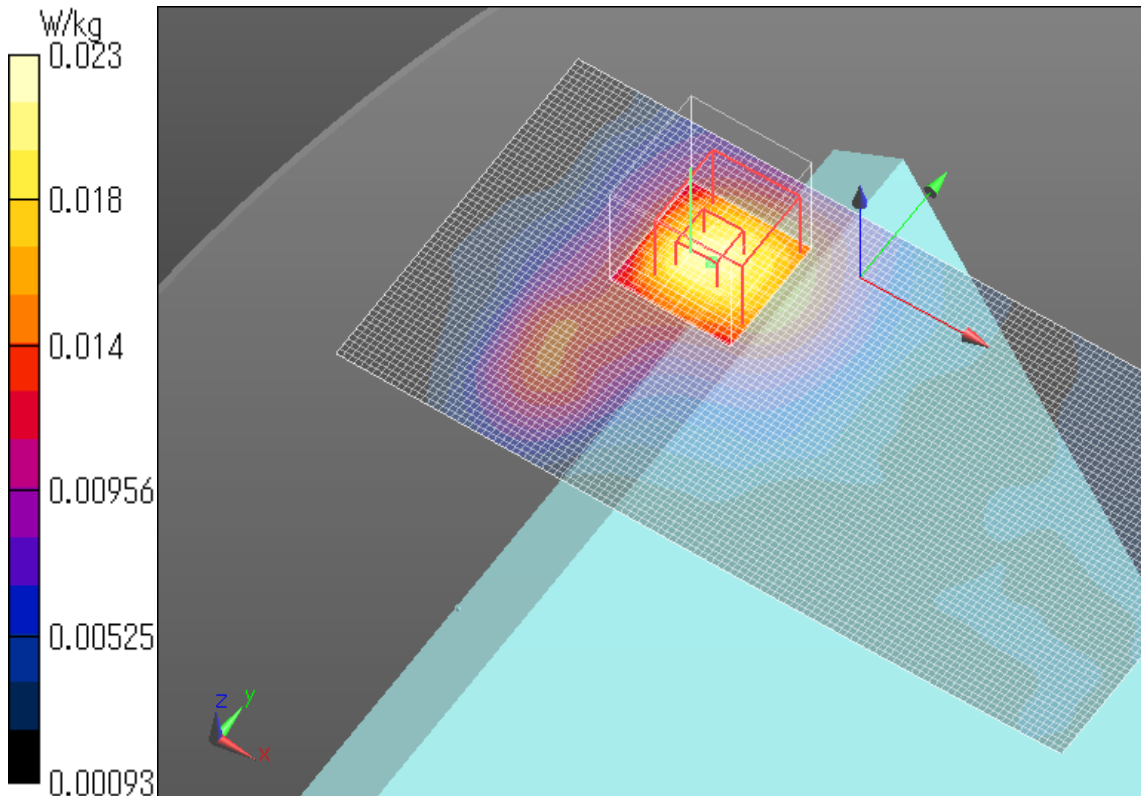
Reference Value = 3.746 V/m; Power Drift = 0.23 dB

Peak SAR (extrapolated) = 0.0280 W/kg

SAR(1 g) = 0.017 W/kg; SAR(10 g) = 0.011 W/kg

[Info: Interpolated medium parameters used for SAR evaluation.](#)

Maximum value of SAR (measured) = 0.0225 W/kg



LTE 25 20MHz QPSK 1RB Allocation 49 start Edge 3 tilt Mid ch

Communication System: UID 0, Generic LTE (0); Communication System Band: Band 25, E-UTRA/FDD (1850.0 - 1915.0 MHz); Frequency: 1882.5 MHz; Duty Cycle: 1:1
Medium parameters used (interpolated): $f = 1882.5$ MHz; $\sigma = 1.564$ S/m; $\epsilon_r = 53.393$; $\rho = 1000$ kg/m³
Phantom section: Flat Section
Measurement Standard: DASY5 (IEEE/IEC/ANSI C63.19-2007)
DASY5 Configuration
Probe: EX3DV4 - SN3922; ConvF(7.85, 7.85, 7.85); Calibrated: 2014/06/13; $\{\text{Probe: Calibration Date}\}$
Sensor-Surface: 2mm (Mechanical Surface Detection (Locations From Previous Scan Used)),
Sensor-Surface: 2mm (Mechanical Surface Detection)
Electronics: DAE4 Sn1372; Calibrated: 2014/06/18
Phantom: ELI v5.0 TP1207; Type: QDOVA001BB; Serial: TP:1207
Measurement SW: DASY52, Version 52.8 (8); SEMCAD X Version 14.6.10 (7331)

Area Scan (141x81x1): Interpolated grid: dx=1.500 mm, dy=1.500 mm

[Info: Interpolated medium parameters used for SAR evaluation.](#)

Maximum value of SAR (interpolated) = 0.0150 W/kg

Zoom Scan (7x7x7)/Cube 0: Measurement grid: dx=5mm, dy=5mm, dz=5mm

Reference Value = 2.984 V/m; Power Drift = -0.02 dB

Peak SAR (extrapolated) = 0.0220 W/kg

SAR(1 g) = 0.010 W/kg; SAR(10 g) = 0.00608 W/kg

[Info: Interpolated medium parameters used for SAR evaluation.](#)

Warning: Maximum averaged SAR over 10 g is located on the boundary of the measurement cube. This cube might not incorporate the absolute averaged SAR. Please consider a refinement of the Area Scan measurement.

Maximum value of SAR (measured) = 0.0139 W/kg

