

15.9 SAR test plots for CDMA Band 1

CDMA BC1 1xEV-DO Rel.0 Main Ant Position 2 9mm Full power 1880MHz

Communication System: UID 0, CDMA2000 (0); Communication System Band: PCS; Frequency: 1880 MHz; Duty Cycle: 1:1

Medium parameters used: $f = 1880$ MHz; $\sigma = 1.577$ S/m; $\epsilon_r = 53.065$; $\rho = 1000$ kg/m³

Phantom section: Flat Section

Measurement Standard: DASY5 (IEEE/IEC/ANSI C63.19-2007)

DASY5 Configuration

Probe: EX3DV4 - SN3922; ConvF(7.76, 7.76, 7.76); Calibrated: 2013/06/04;

Sensor-Surface: 2mm (Mechanical Surface Detection)

Electronics: DAE4 Sn1372; Calibrated: 2013/06/03

Phantom: ELI v5.0 TP1207; Type: QDOVA001BB; Serial: TP:1207

Measurement SW: DASY52, Version 52.8 (7); SEMCAD X Version 14.6.10 (7164)

Area Scan (61x121x1): Interpolated grid: $dx=1.500$ mm, $dy=1.500$ mm

Maximum value of SAR (interpolated) = 0.212 W/kg

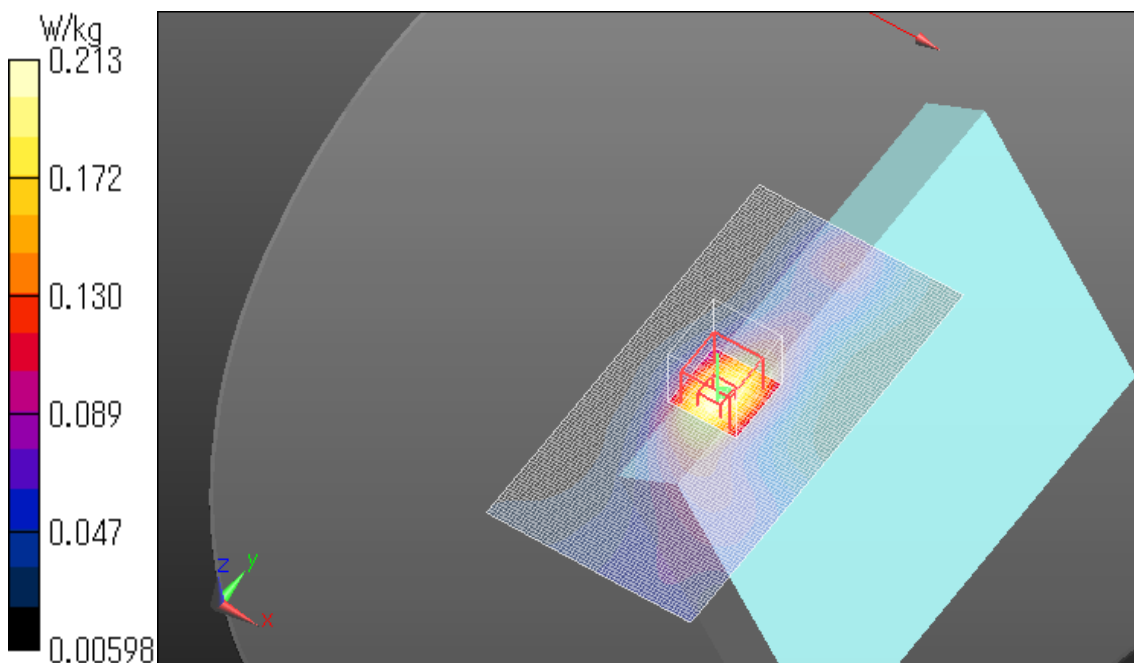
Zoom Scan (7x7x7)/Cube 0: Measurement grid: $dx=5$ mm, $dy=5$ mm, $dz=5$ mm

Reference Value = 11.775 V/m; Power Drift = 0.02 dB

Peak SAR (extrapolated) = 0.374 W/kg

SAR(1 g) = 0.154 W/kg; SAR(10 g) = 0.092 W/kg

Maximum value of SAR (measured) = 0.213 W/kg



CDMA BC1 1xEV-DO Rel.0 Main Ant Position 4 6mm Full power 1880MHz

Communication System: UID 0, CDMA2000 (0); Communication System Band: PCS; Frequency: 1880 MHz; Duty Cycle: 1:1

Medium parameters used: $f = 1880$ MHz; $\sigma = 1.577$ S/m; $\epsilon_r = 53.065$; $\rho = 1000$ kg/m³

Phantom section: Flat Section

Measurement Standard: DASY5 (IEEE/IEC/ANSI C63.19-2007)

DASY5 Configuration

Probe: EX3DV4 - SN3922; ConvF(7.76, 7.76, 7.76); Calibrated: 2013/06/04;

Sensor-Surface: 2mm (Mechanical Surface Detection)

Electronics: DAE4 Sn1372; Calibrated: 2013/06/03

Phantom: ELI v5.0 TP1207; Type: QDOVA001BB; Serial: TP:1207

Measurement SW: DASY52, Version 52.8 (7); SEMCAD X Version 14.6.10 (7164)

Area Scan (161x101x1): Interpolated grid: dx=1.500 mm, dy=1.500 mm

Maximum value of SAR (interpolated) = 0.0638 W/kg

Zoom Scan (7x7x7)/Cube 0: Measurement grid: dx=5mm, dy=5mm, dz=5mm

Reference Value = 6.225 V/m; Power Drift = 0.14 dB

Peak SAR (extrapolated) = 0.0730 W/kg

SAR(1 g) = 0.045 W/kg; SAR(10 g) = 0.026 W/kg

Maximum value of SAR (measured) = 0.0583 W/kg

