

15.7 SAR test plots for WCDMA Band II

WCDMA Band II Main Ant position2 9mm Full power 1907.6MHz

Communication System: UID 0, WCDMA (0); Communication System Band: Band II; Frequency:

1907.6 MHz; Duty Cycle: 1:1

Medium parameters used (interpolated): $f = 1907.6$ MHz; $\sigma = 1.575$ S/m; $\epsilon_r = 50.975$; $\rho = 1000$ kg/m³

Phantom section: Flat Section

Measurement Standard: DASYS5 (IEEE/IEC/ANSI C63.19-2007)

DASY5 Configuration

Probe: EX3DV4 - SN3922; ConvF(7.76, 7.76, 7.76); Calibrated: 2013/06/04;

Sensor-Surface: 2mm (Mechanical Surface Detection)

Electronics: DAE4 Sn1372; Calibrated: 2013/06/03

Phantom: ELI v5.0 TP1207; Type: QDOVA001BB; Serial: TP:1207

Measurement SW: DASYS5, Version 52.8 (7); SEMCAD X Version 14.6.10 (7164)

Area Scan (71x121x1): Interpolated grid: dx=1.500 mm, dy=1.500 mm

Maximum value of SAR (interpolated) = 0.124 W/kg

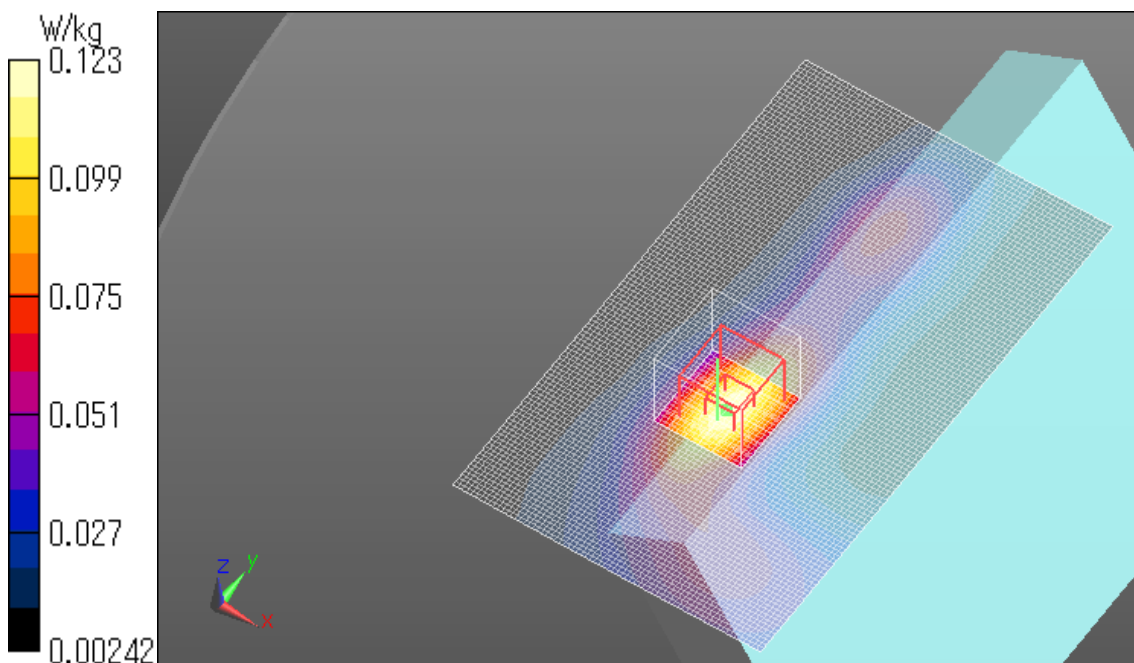
Zoom Scan (7x7x7)/Cube 0: Measurement grid: dx=5mm, dy=5mm, dz=5mm

Reference Value = 9.015 V/m; Power Drift = -0.02 dB

Peak SAR (extrapolated) = 0.153 W/kg

SAR(1 g) = 0.092 W/kg; SAR(10 g) = 0.053 W/kg

Maximum value of SAR (measured) = 0.123 W/kg



WCDMA Band II Main Ant Position4 6mm Full power 1907.6MHz

Communication System: UID 0, WCDMA (0); Communication System Band: Band II; Frequency: 1907.6 MHz; Duty Cycle: 1:1

Medium parameters used: $f = 1908$ MHz; $\sigma = 1.549$ S/m; $\epsilon_r = 53.181$; $\rho = 1000$ kg/m³

Phantom section: Flat Section

Measurement Standard: DASY5 (IEEE/IEC/ANSI C63.19-2007)

DASY5 Configuration

Probe: EX3DV4 - SN3825; ConvF(7.66, 7.66, 7.66); Calibrated: 2013/12/13;

Sensor-Surface: 2mm (Mechanical Surface Detection)

Electronics: DAE4 Sn509; Calibrated: 2013/07/16

Phantom: ELI v5.0 TP1207; Type: QDOVA001BB; Serial: TP:1207

Measurement SW: DASY52, Version 52.8 (7); SEMCAD X Version 14.6.10 (7164)

Area Scan (201x101x1): Interpolated grid: dx=1.500 mm, dy=1.500 mm

Maximum value of SAR (interpolated) = 0.0161 W/kg

Zoom Scan (7x7x7)/Cube 0: Measurement grid: dx=5mm, dy=5mm, dz=5mm

Reference Value = 3.234 V/m; Power Drift = 0.15 dB

Peak SAR (extrapolated) = 0.0180 W/kg

SAR(1 g) = 0.011 W/kg; SAR(10 g) = 0.00683 W/kg

Maximum value of SAR (measured) = 0.0155 W/kg

