

15.6 SAR test plots for WCDMA Band IV

WCDMA Band IV Main Ant Position 2 9mm Full power 1732.4MHz

Communication System: UID 0, WCDMA (0); Communication System Band: Band IV; Frequency: 1732.4 MHz; Duty Cycle: 1:1

Medium parameters used (interpolated): $f = 1732.4$ MHz; $\sigma = 1.411$ S/m; $\epsilon_r = 51.746$; $\rho = 1000$ kg/m³

Phantom section: Flat Section

Measurement Standard: DASY5 (IEEE/IEC/ANSI C63.19-2007)

DASY5 Configuration

Probe: EX3DV4 - SN3825; ConvF(7.86, 7.86, 7.86); Calibrated: 2013/12/13;

Sensor-Surface: 2mm (Mechanical Surface Detection)

Electronics: DAE4 Sn509; Calibrated: 2013/07/16

Phantom: ELI 4.0; Type: QDOVA001BB; Serial: 1045

Measurement SW: DASY52, Version 52.8 (7); SEMCAD X Version 14.6.10 (7164)

Area Scan (61x121x1): Interpolated grid: dx=1.500 mm, dy=1.500 mm

Maximum value of SAR (interpolated) = 0.392 W/kg

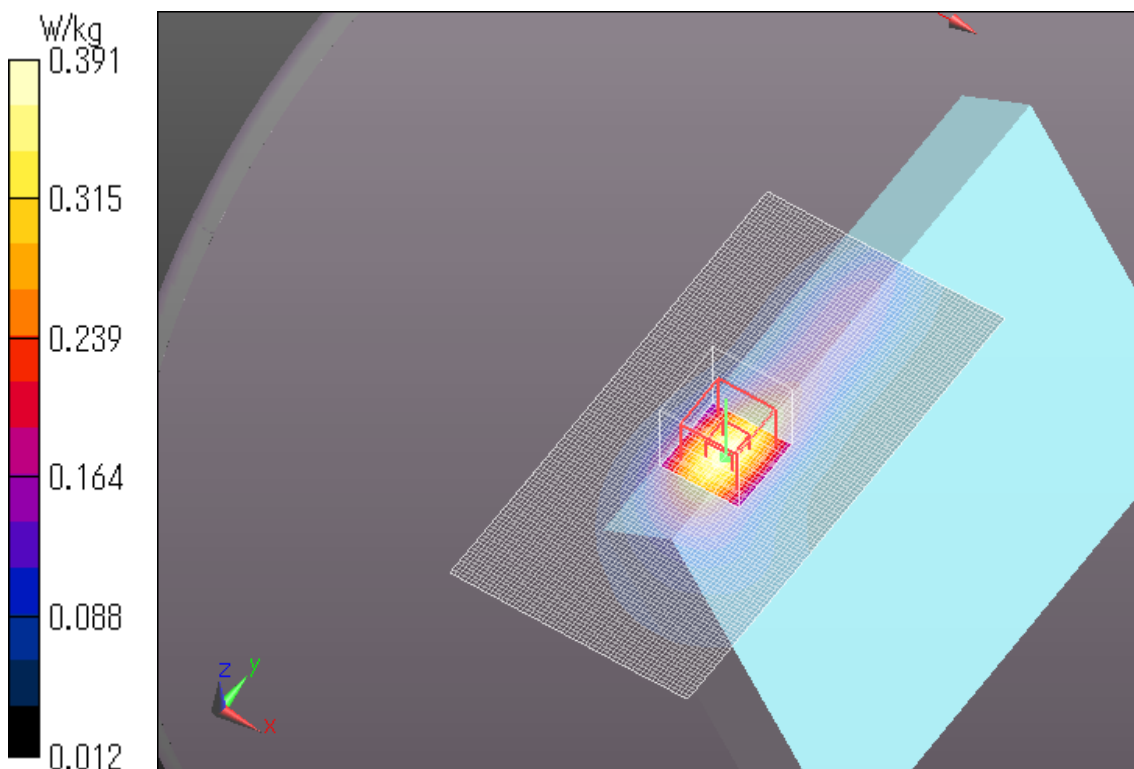
Zoom Scan (7x7x7)/Cube 0: Measurement grid: dx=5mm, dy=5mm, dz=5mm

Reference Value = 16.931 V/m; Power Drift = 0.02 dB

Peak SAR (extrapolated) = 0.482 W/kg

SAR(1 g) = 0.290 W/kg; SAR(10 g) = 0.169 W/kg

Maximum value of SAR (measured) = 0.391 W/kg



WCDMA Band IV Main Ant Position4 6mm Full power 1732.4MHz

Communication System: UID 0, WCDMA (0); Communication System Band: Band IV; Frequency: 1732.4 MHz; Duty Cycle: 1:1
Medium parameters used (interpolated): $f = 1732.4$ MHz; $\sigma = 1.422$ S/m; $\epsilon_r = 53.082$; $\rho = 1000$ kg/m³
Phantom section: Flat Section
Measurement Standard: DASY5 (IEEE/IEC/ANSI C63.19-2007)
DASY5 Configuration
Probe: EX3DV4 - SN3825; ConvF(7.86, 7.86, 7.86); Calibrated: 2013/12/13;
Sensor-Surface: 2mm (Mechanical Surface Detection)
Electronics: DAE4 Sn509; Calibrated: 2013/07/16
Phantom: ELI v5.0 TP1207; Type: QDOVA001BB; Serial: TP:1207
Measurement SW: DASY52, Version 52.8 (7); SEMCAD X Version 14.6.10 (7164)

Area Scan (161x101x1): Interpolated grid: dx=1.500 mm, dy=1.500 mm
Maximum value of SAR (interpolated) = 0.0599 W/kg

Zoom Scan (7x7x7)/Cube 0: Measurement grid: dx=5mm, dy=5mm, dz=5mm
Reference Value = 6.542 V/m; Power Drift = 0.19 dB
Peak SAR (extrapolated) = 0.0720 W/kg
SAR(1 g) = 0.048 W/kg; SAR(10 g) = 0.031 W/kg
Maximum value of SAR (measured) = 0.0608 W/kg

