

15.3 SAR test plots for GSM850

GSM850 GPRS 2slots Main Ant Position 2 9mm Full power 848.8MHz

Communication System: UID 0, Generic GSM (0); Communication System Band: GSM 850 (824.0 - 849.0 MHz); Frequency: 848.8 MHz; Duty Cycle: 1:4.19952

Medium parameters used (interpolated): $f = 848.8$ MHz; $\sigma = 0.979$ S/m; $\epsilon_r = 57.272$; $\rho = 1000$ kg/m³

Phantom section: Flat Section

Measurement Standard: DASY5 (IEEE/IEC/ANSI C63.19-2007)

DASY5 Configuration

Probe: EX3DV4 - SN3922; ConvF(10.16, 10.16, 10.16); Calibrated: 2013/06/04;

Sensor-Surface: 2mm (Mechanical Surface Detection)

Electronics: DAE4 Sn1372; Calibrated: 2013/06/03

Phantom: ELI v5.0 TP1207; Type: QDOVA001BB; Serial: TP:1207

Measurement SW: DASY52, Version 52.8 (7); SEMCAD X Version 14.6.10 (7164)

Area Scan (61x121x1): Interpolated grid: dx=1.500 mm, dy=1.500 mm

Maximum value of SAR (interpolated) = 0.167 W/kg

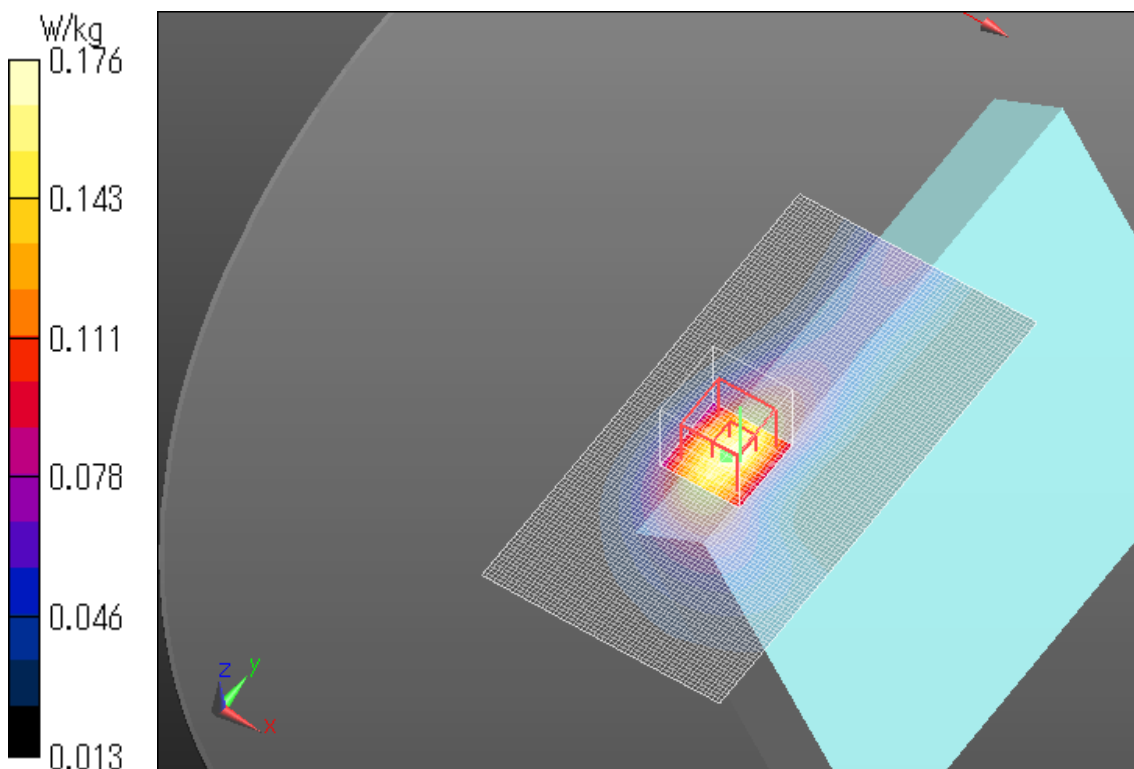
Zoom Scan (7x7x7)/Cube 0: Measurement grid: dx=5mm, dy=5mm, dz=5mm

Reference Value = 13.182 V/m; Power Drift = 0.14 dB

Peak SAR (extrapolated) = 0.213 W/kg

SAR(1 g) = 0.137 W/kg; SAR(10 g) = 0.086 W/kg

Maximum value of SAR (measured) = 0.176 W/kg



GSM850 GPRS 2slots Main Ant Position4 6mm Full power 848.8MHz

Communication System: UID 0, Generic GSM (0); Communication System Band: GSM 850 (824.0 - 849.0 MHz); Frequency: 848.8 MHz; Duty Cycle: 1:4.19952

Medium parameters used: $f = 849$ MHz; $\sigma = 1.004$ S/m; $\epsilon_r = 54.684$; $\rho = 1000$ kg/m³

Phantom section: Flat Section

Measurement Standard: DASY5 (IEEE/IEC/ANSI C63.19-2007)

DASY5 Configuration

Probe: EX3DV4 - SN3825; ConvF(9.41, 9.41, 9.41); Calibrated: 2013/12/13;

Sensor-Surface: 2mm (Mechanical Surface Detection)

Electronics: DAE4 Sn509; Calibrated: 2013/07/16

Phantom: ELI 4.0; Type: QDOVA001BB; Serial: 1045

Measurement SW: DASY52, Version 52.8 (7); SEMCAD X Version 14.6.10 (7164)

Area Scan (161x101x1): Interpolated grid: dx=1.500 mm, dy=1.500 mm

Maximum value of SAR (interpolated) = 0.0411 W/kg

Zoom Scan (7x7x7)/Cube 0: Measurement grid: dx=5mm, dy=5mm, dz=5mm

Reference Value = 6.216 V/m; Power Drift = 0.03 dB

Peak SAR (extrapolated) = 0.0420 W/kg

SAR(1 g) = 0.031 W/kg; SAR(10 g) = 0.022 W/kg

Maximum value of SAR (measured) = 0.0373 W/kg

