

ID Label/Location

FCC ID: M9MLC7L11U2

IC: 6571A- LC7L11U2

Drawings of Labels:

The Model labels will be mounted on the front of the reader with permanent adhesive

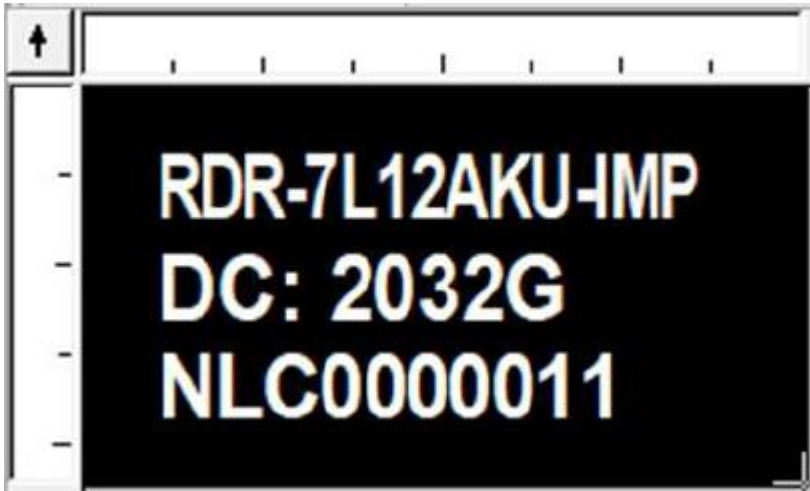
Model RDR-7L11AKU



Model RDR-LC712AKU



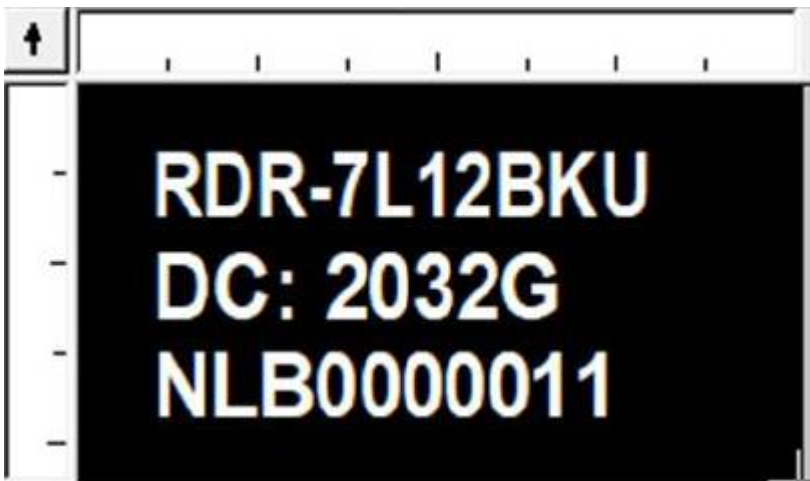
Model RDR-7L12AKU-IMP



Model RDR-7L11BKU



Model RDR-7L12BKU

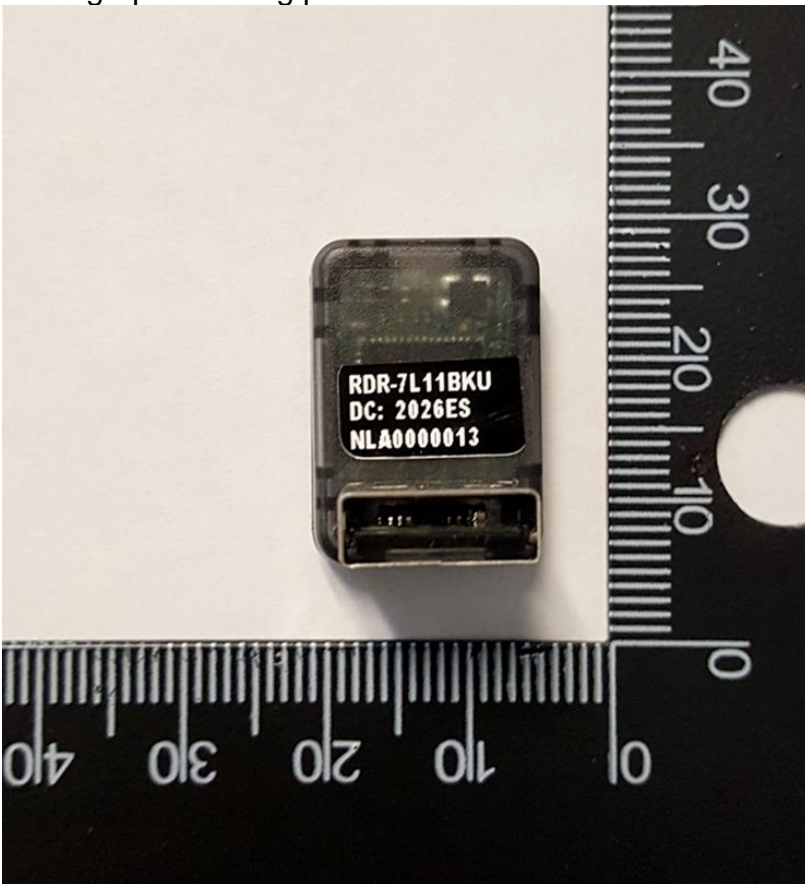


Photograph showing placement of FCC/IC label:



The ID numbers will be etched onto the bottom of the USB connector. The USB shell measures 0.5" by 0.5".

Photograph showing placement of Model Labels



Photographs of OEM Labels:

Model OEM-7L11AXU



Model OEM-7L12AXU



- Type: Zebra PolyPro Label PN: 18930
- Color: White with black text
- Size of Label: 1.50 x 0.5"
- Adhesive to Permanent
- This label will be installed on the bottom of the EUT for OEM models