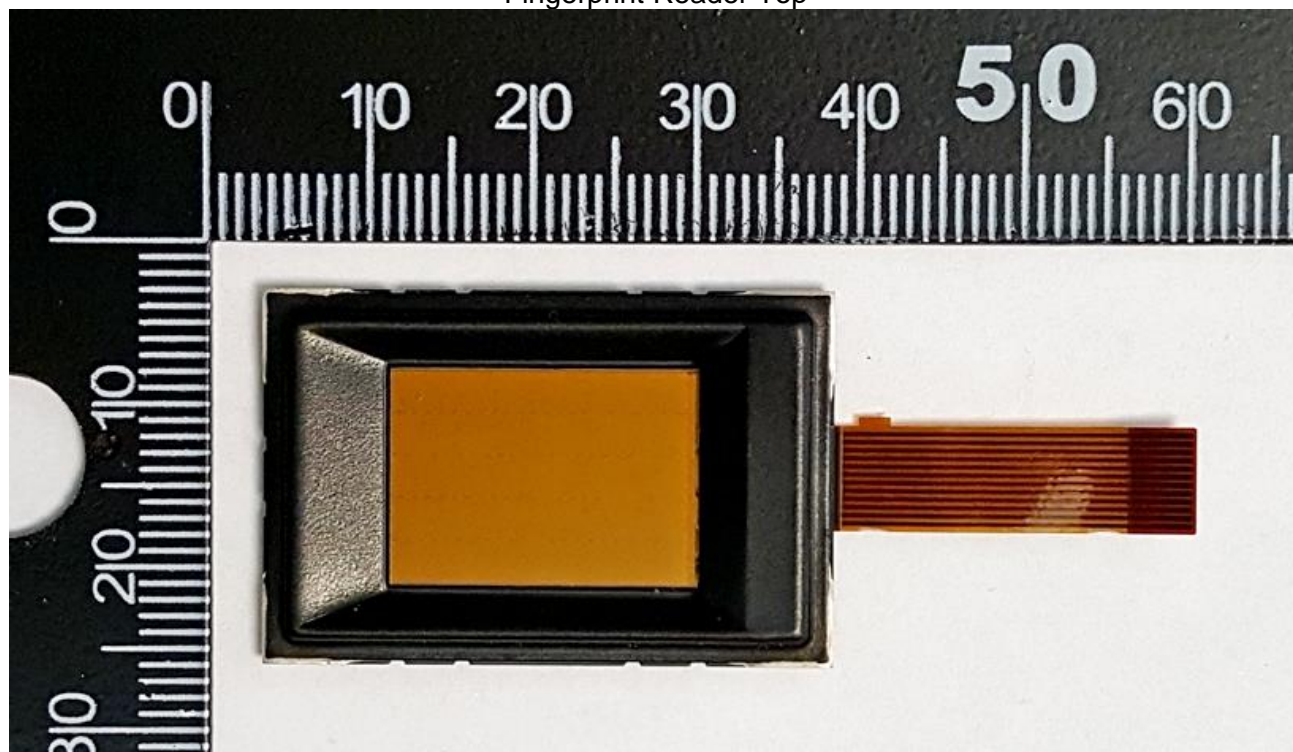
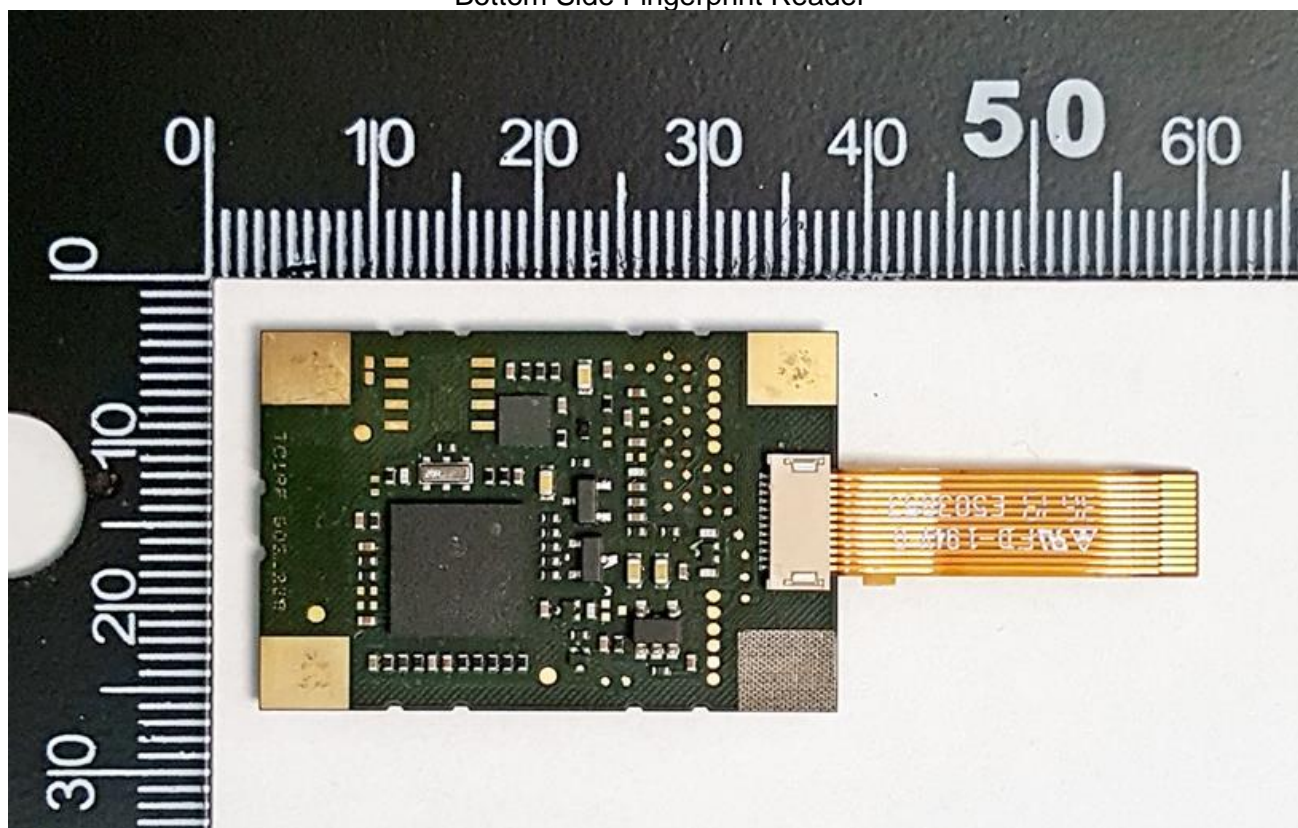


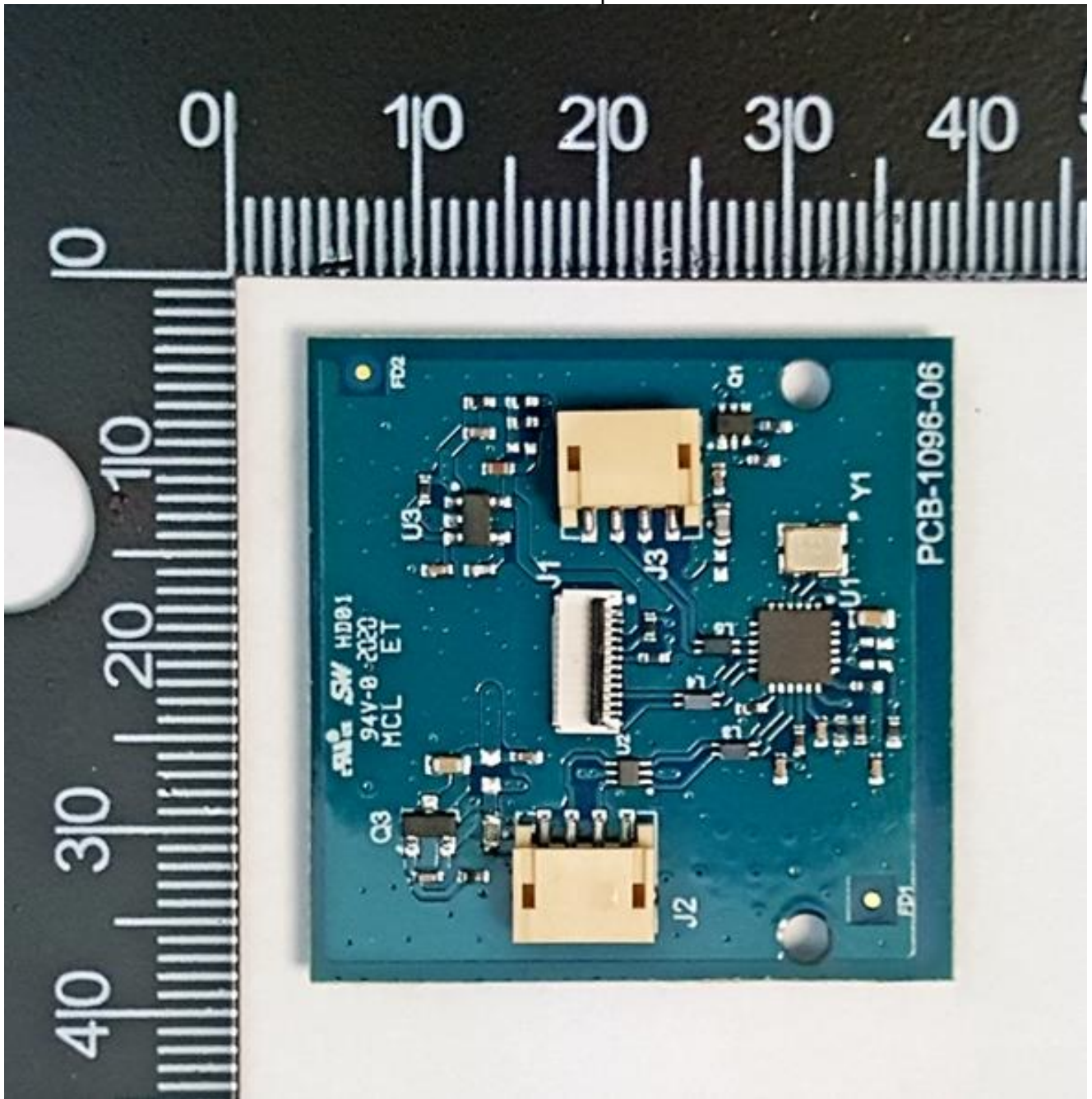
Internal EUT Photographs

Fingerprint Reader Top

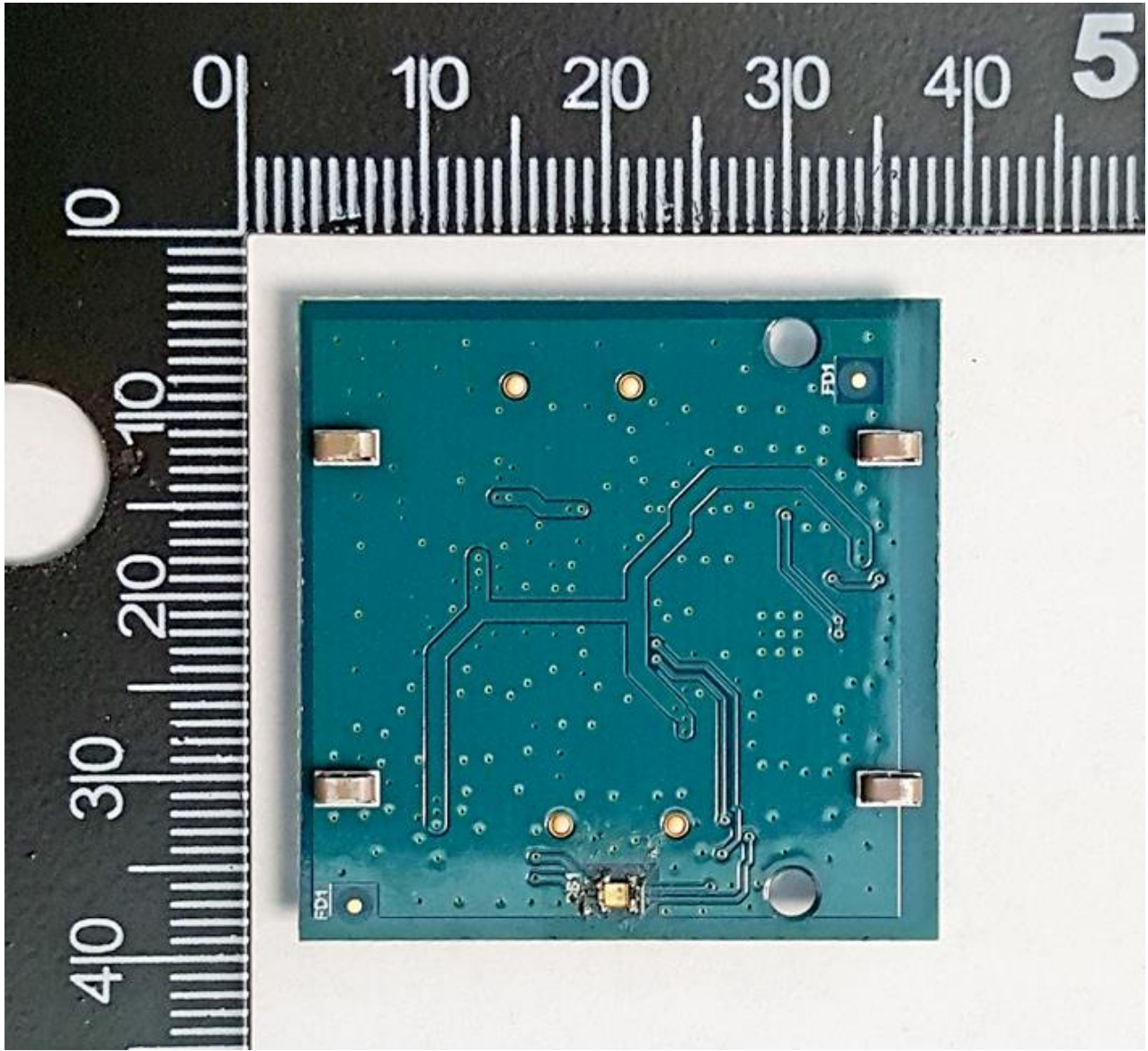


Bottom Side Fingerprint Reader

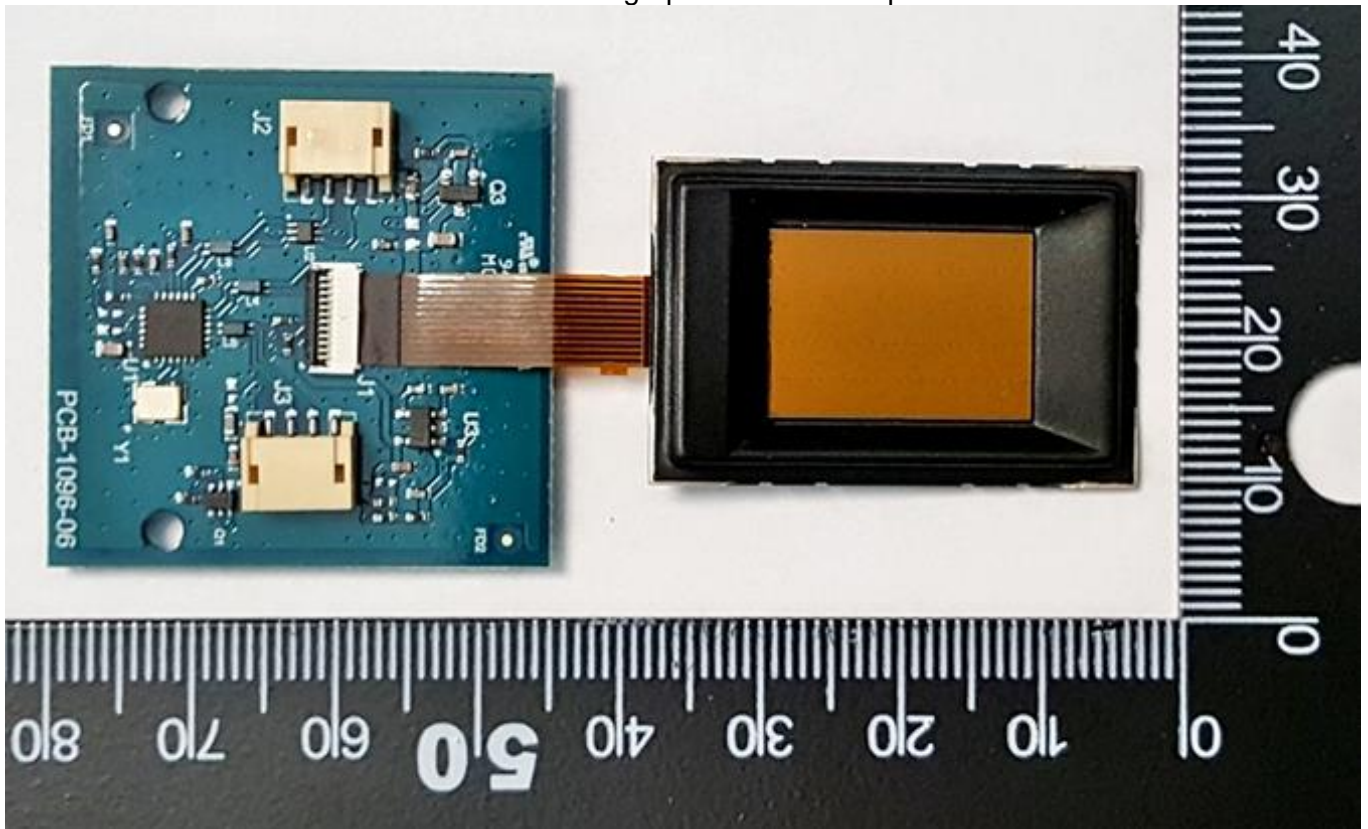




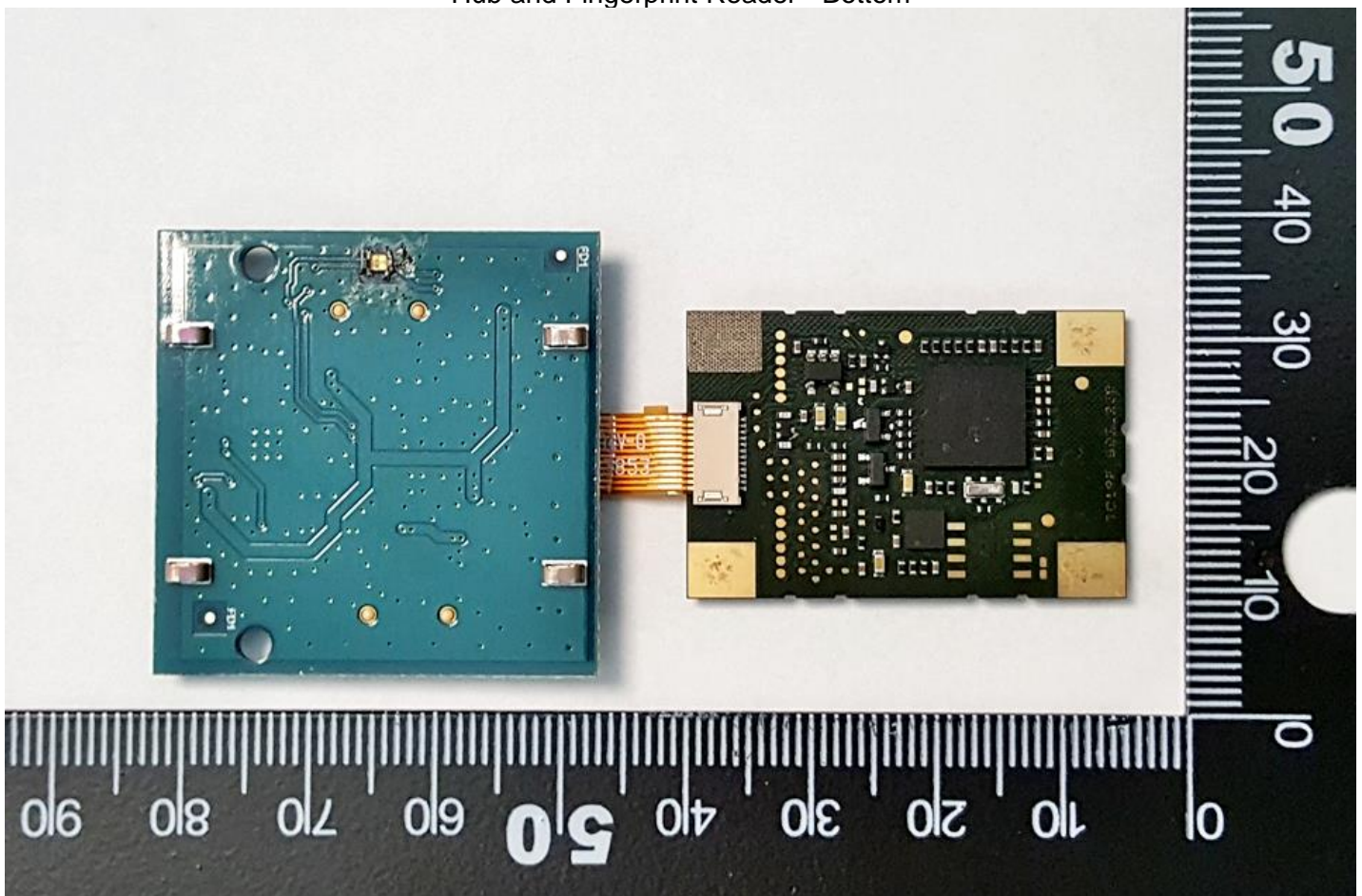
HUB Board - bottom side



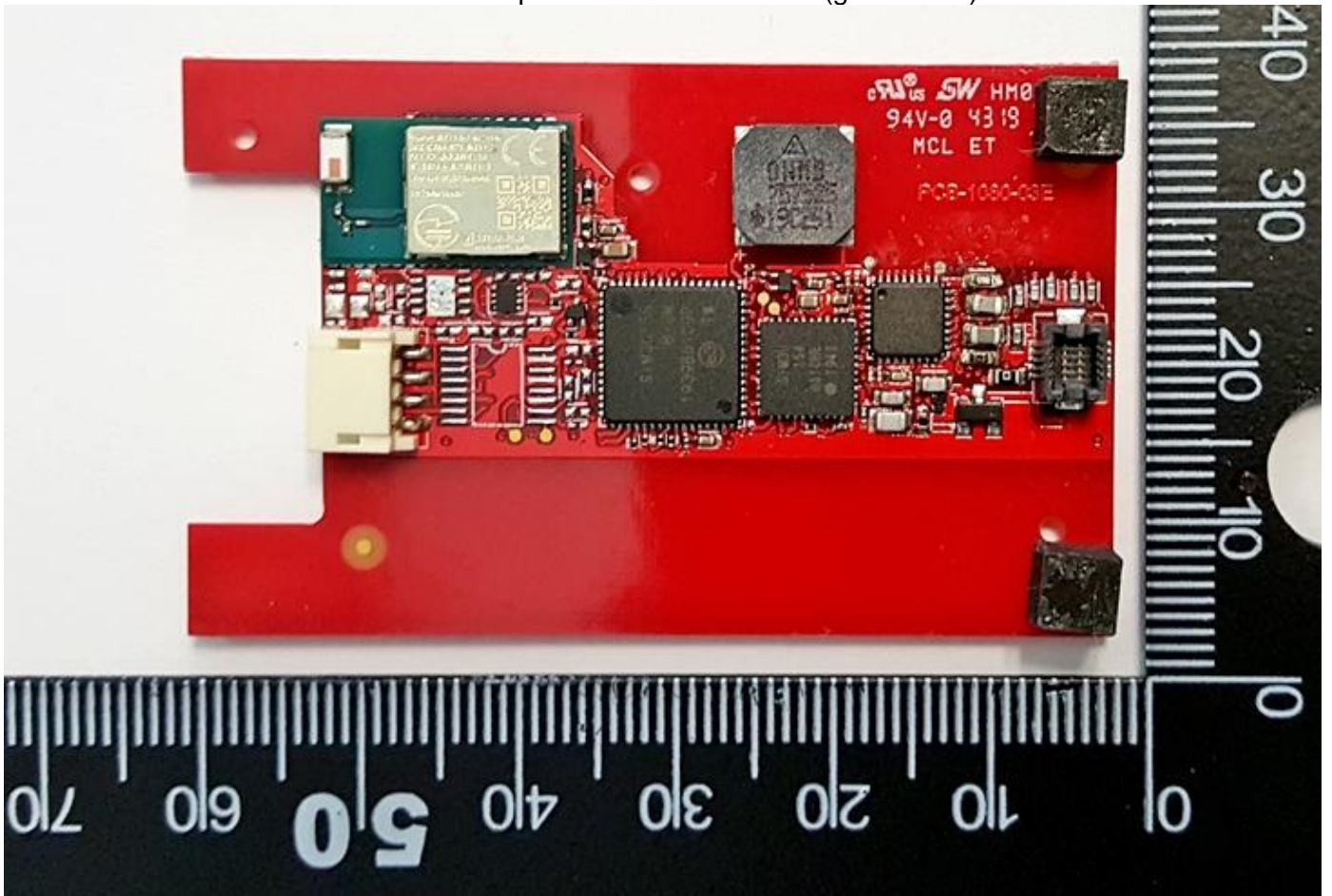
Hub and Fingerprint Reader - Top



Hub and Fingerprint Reader - Bottom

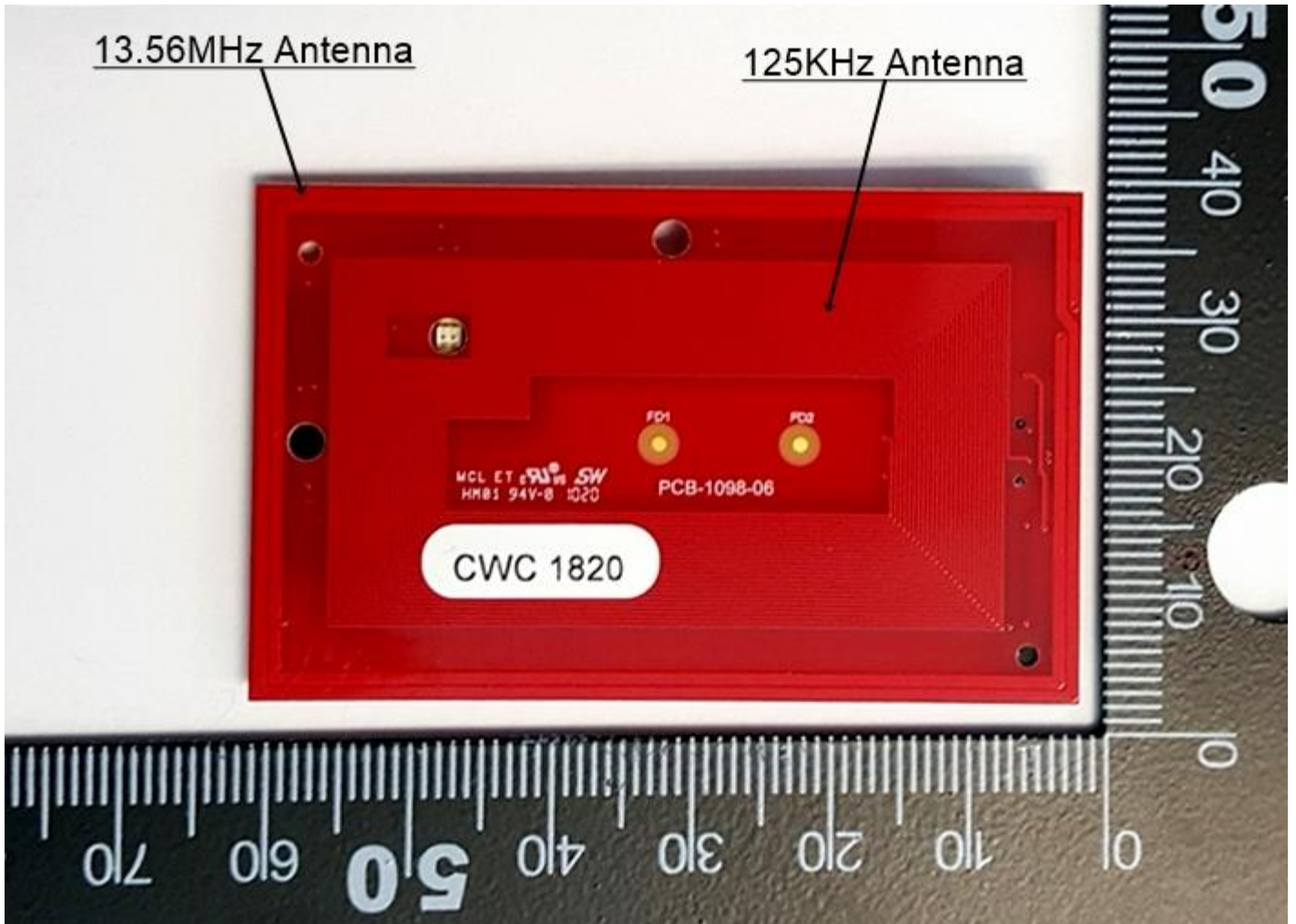


Main board top with Bluetooth Module (green PCB)

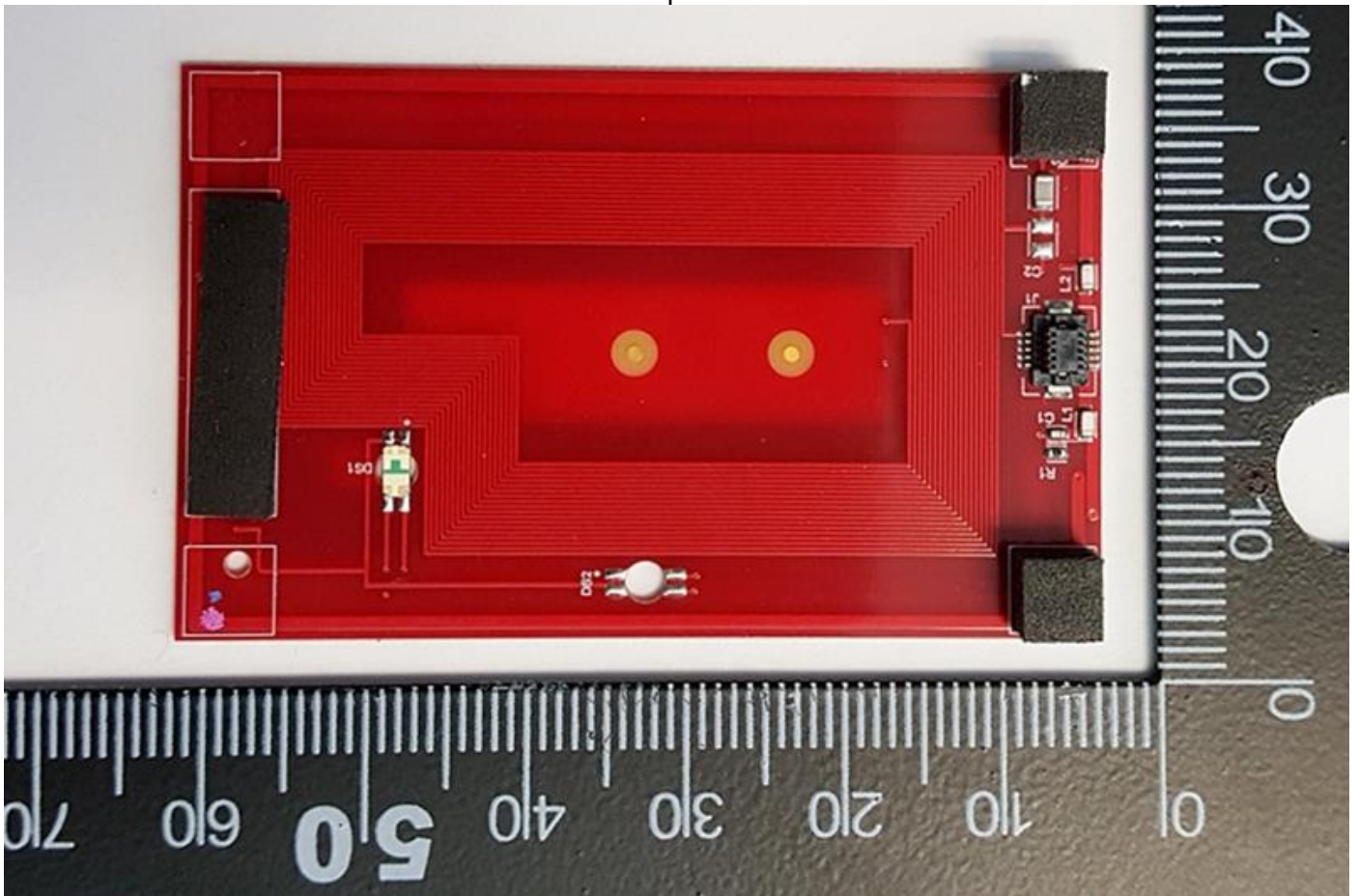


Main board Bottom





Antenna Top and bottom



EUT partially assembled

