



Accredited testing laboratory

DAR registration number: TTI-P-G 166/98

**Federal Motor Transport Authority (KBA)
DAR registration number: KBA-P 00070-97**

Appendix to the Report 3-3397-1-4/02 Photo documentation

Annex 3 Photo documentation

Picture no. 1

Measurement System DASY 3



Picture no. 2

P2002 front touch left



Picture no. 3

P2002 side touch left



Picture no. 4

P2002 rear touch left



Picture no. 5

P2002 front tilted left



Picture no. 6

P2002 side tilted left



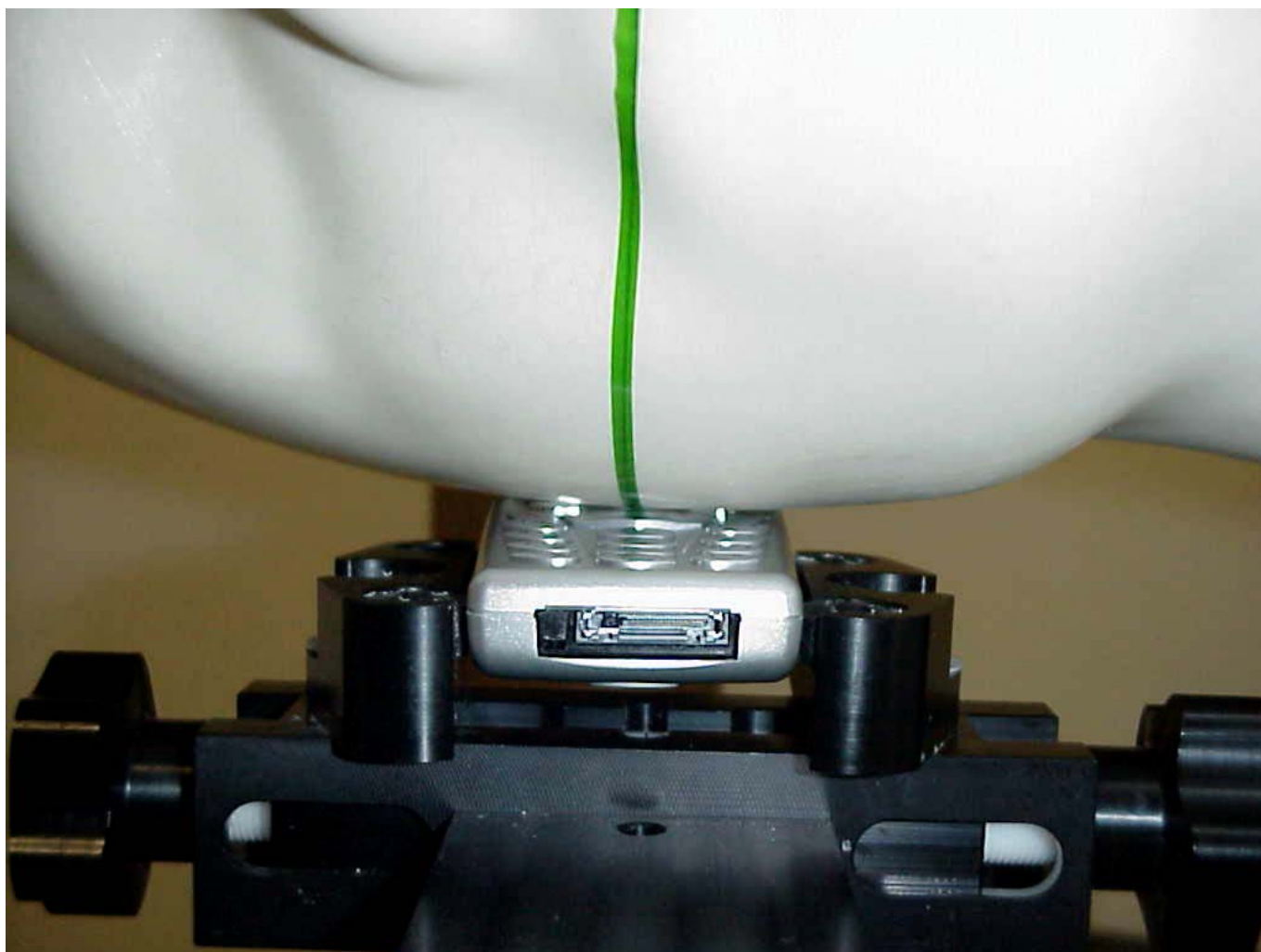
Picture no. 7

P2002 rear tilted left



Picture no. 8

P2002 front touch right



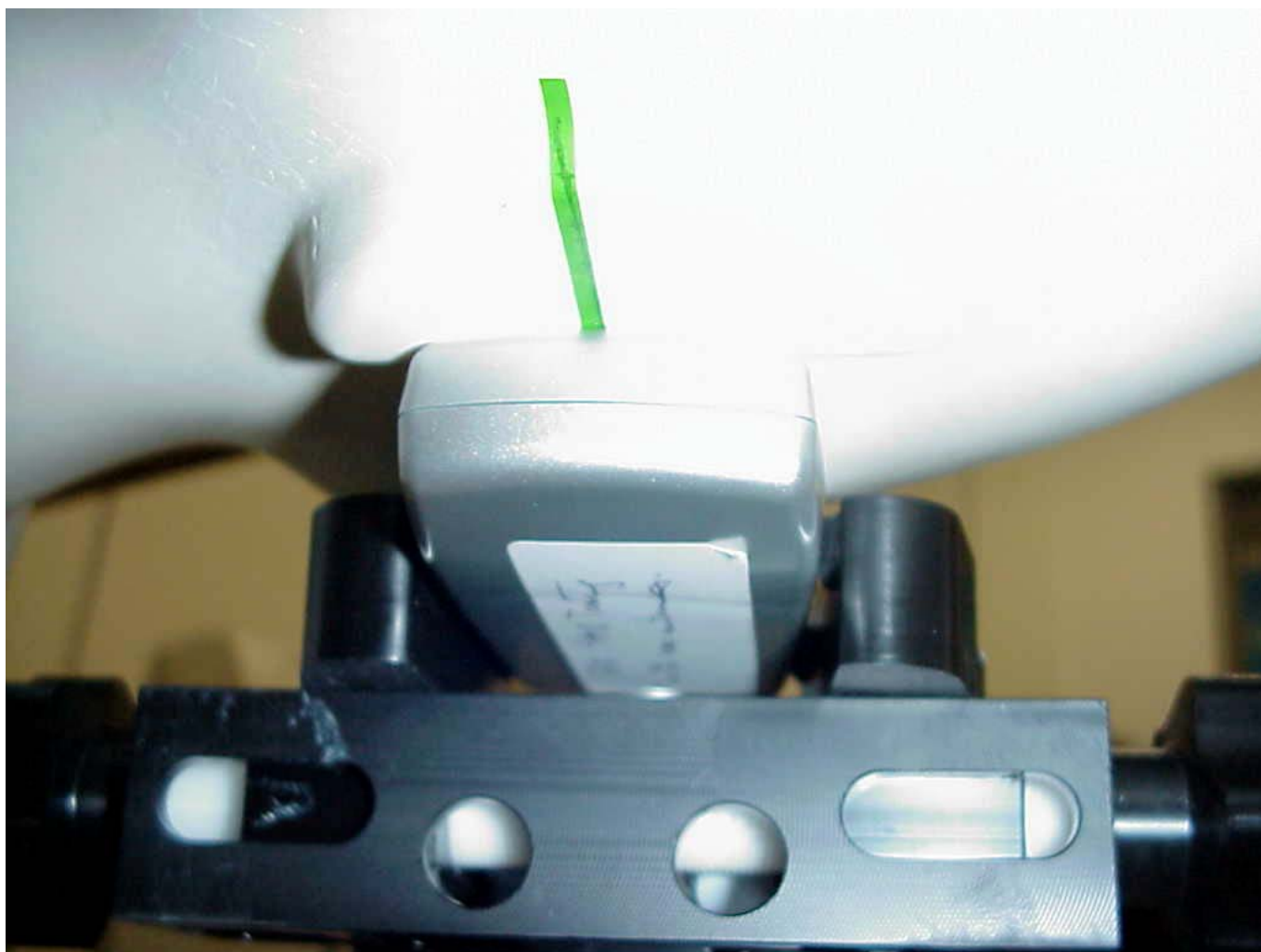
Picture no. 9

P2002 side touch left



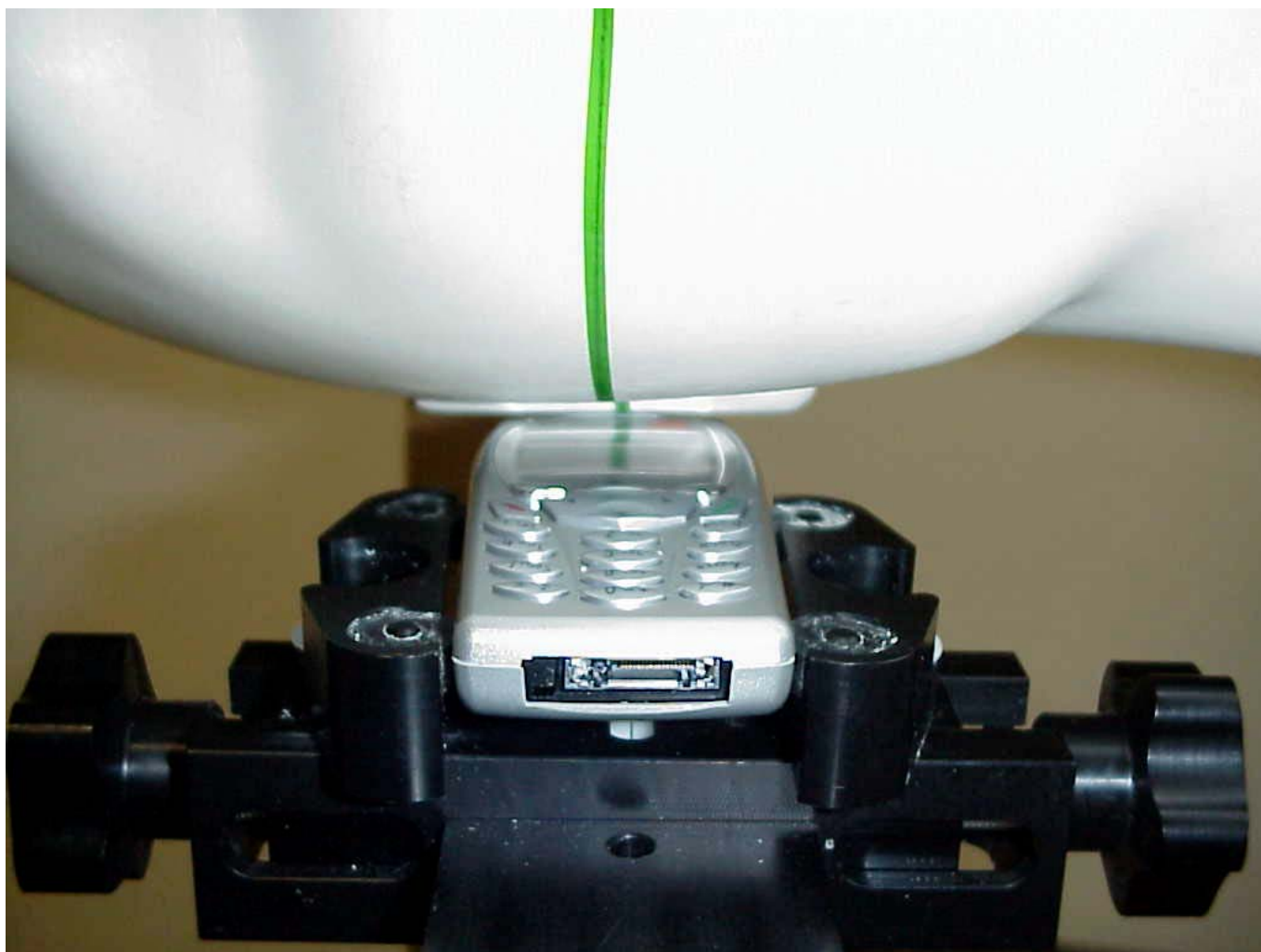
Picture no. 10

P2002 rear touch left



Picture no. 11

P2002 front tilted right



Picture no. 12

P2002 side tilted right



Picture no. 13

P2002 rear tilted right



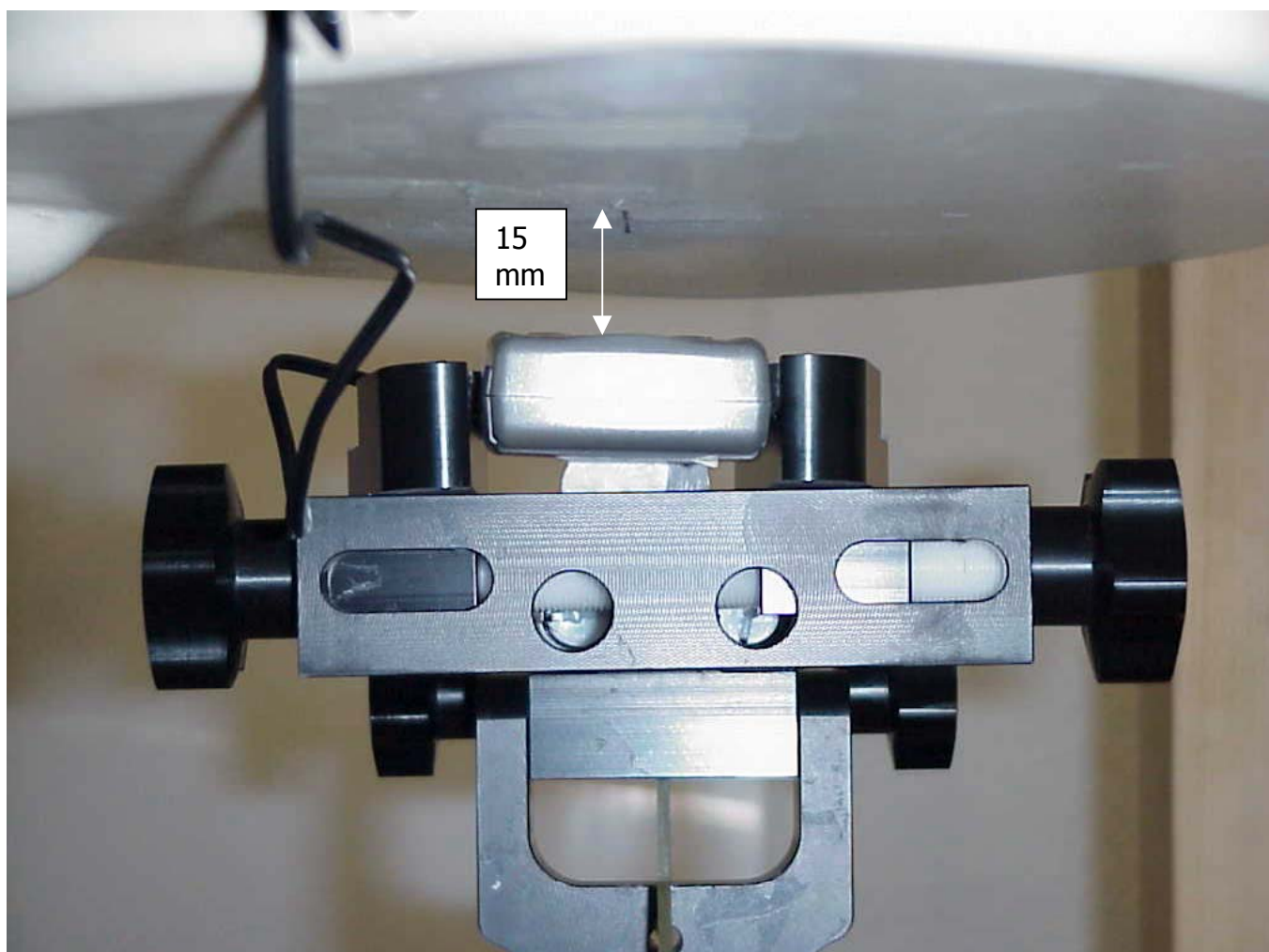
Picture no. 14

P2002 flat front



Picture no. 15

P2002 flat front



Picture no. 16

P2002 flat front



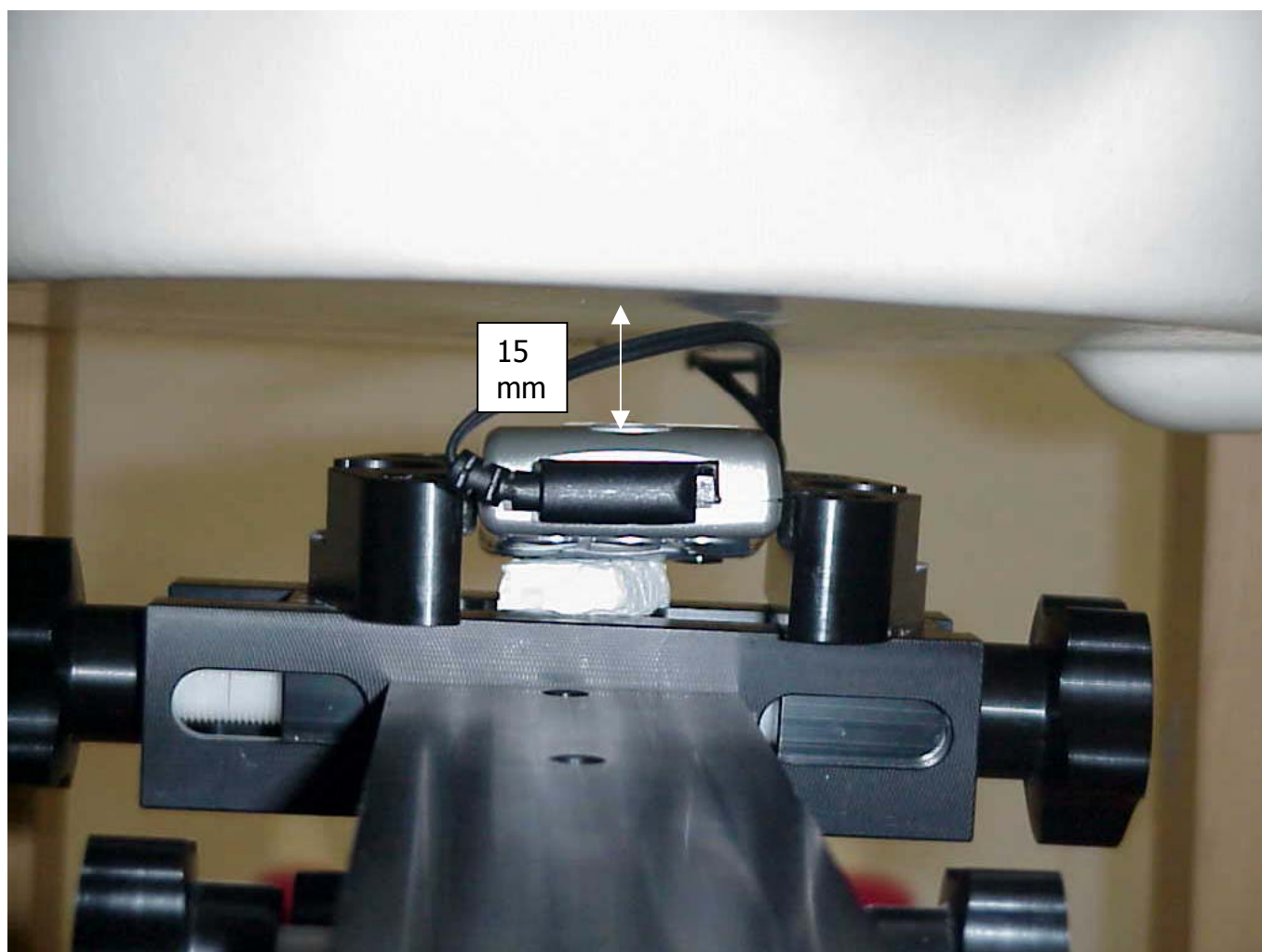
Picture no. 17

P2002 flat rear



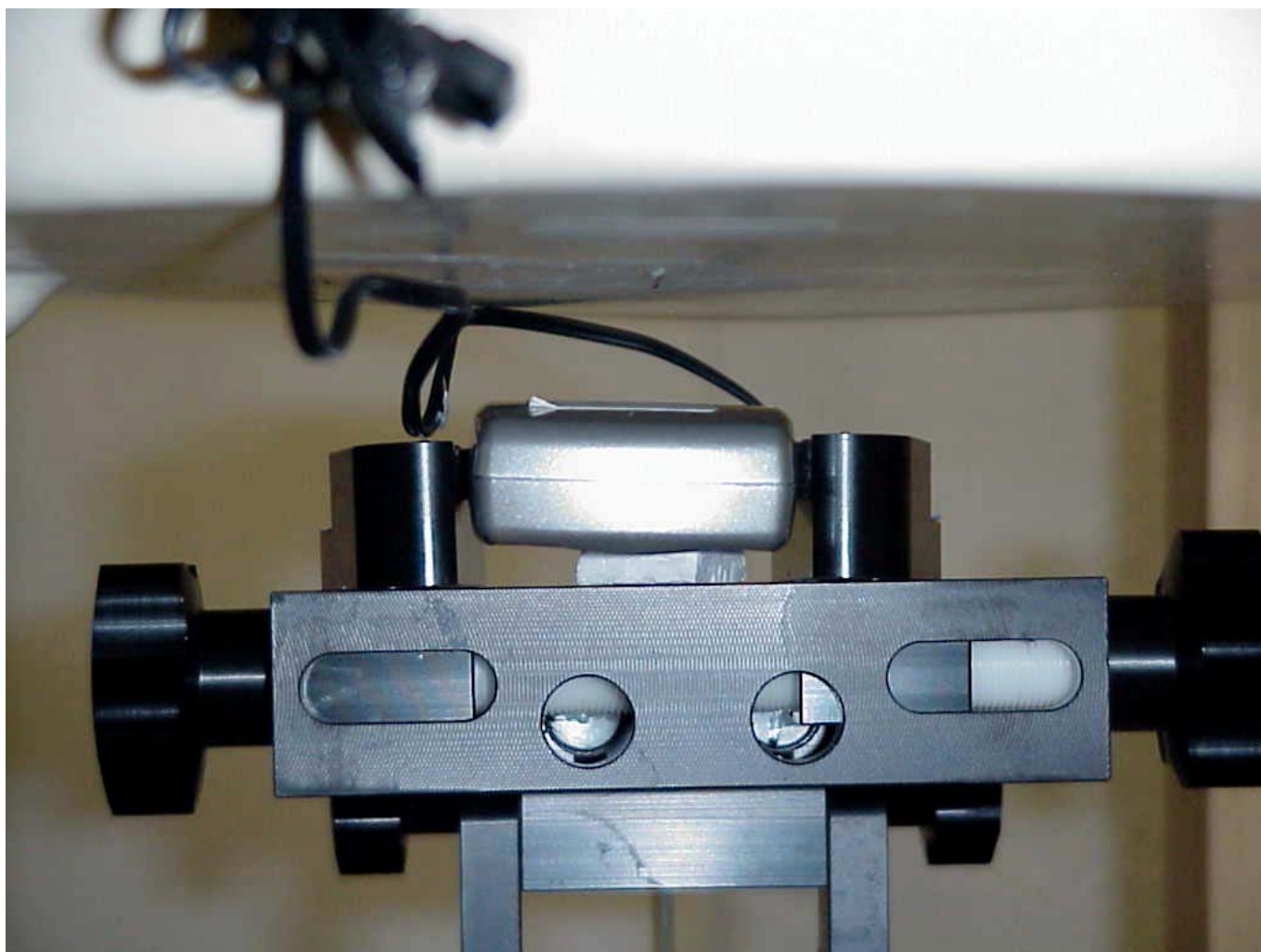
Picture no. 18

P2002 flat rear



Picture no. 19

P2002 flat rear



Picture no. 20

P2002 front



Picture no. 21

P2002 left side



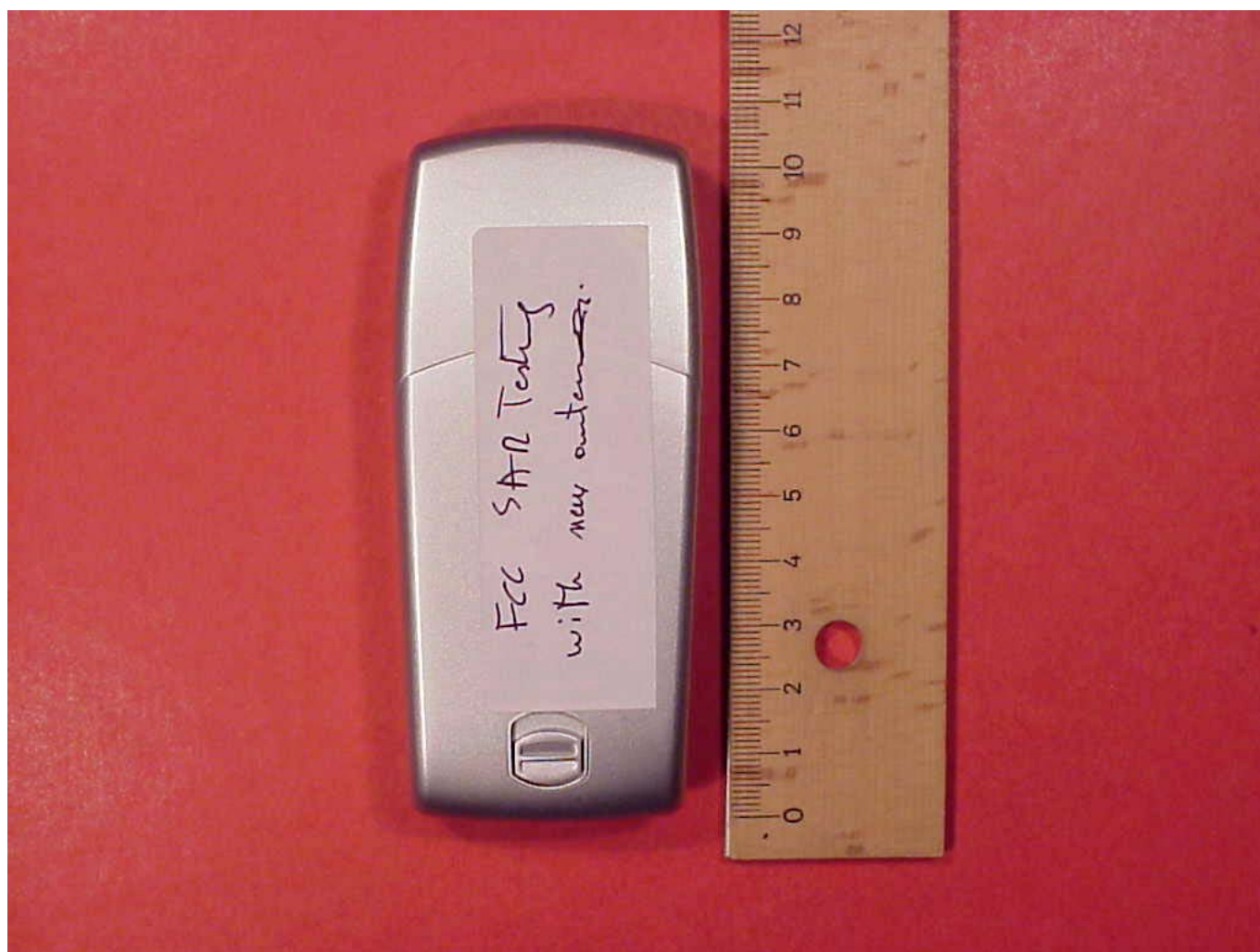
Picture no. 22

P2002 right side



Picture no. 23

P2002 rear



Picture no. 24

P2002 rear with battery



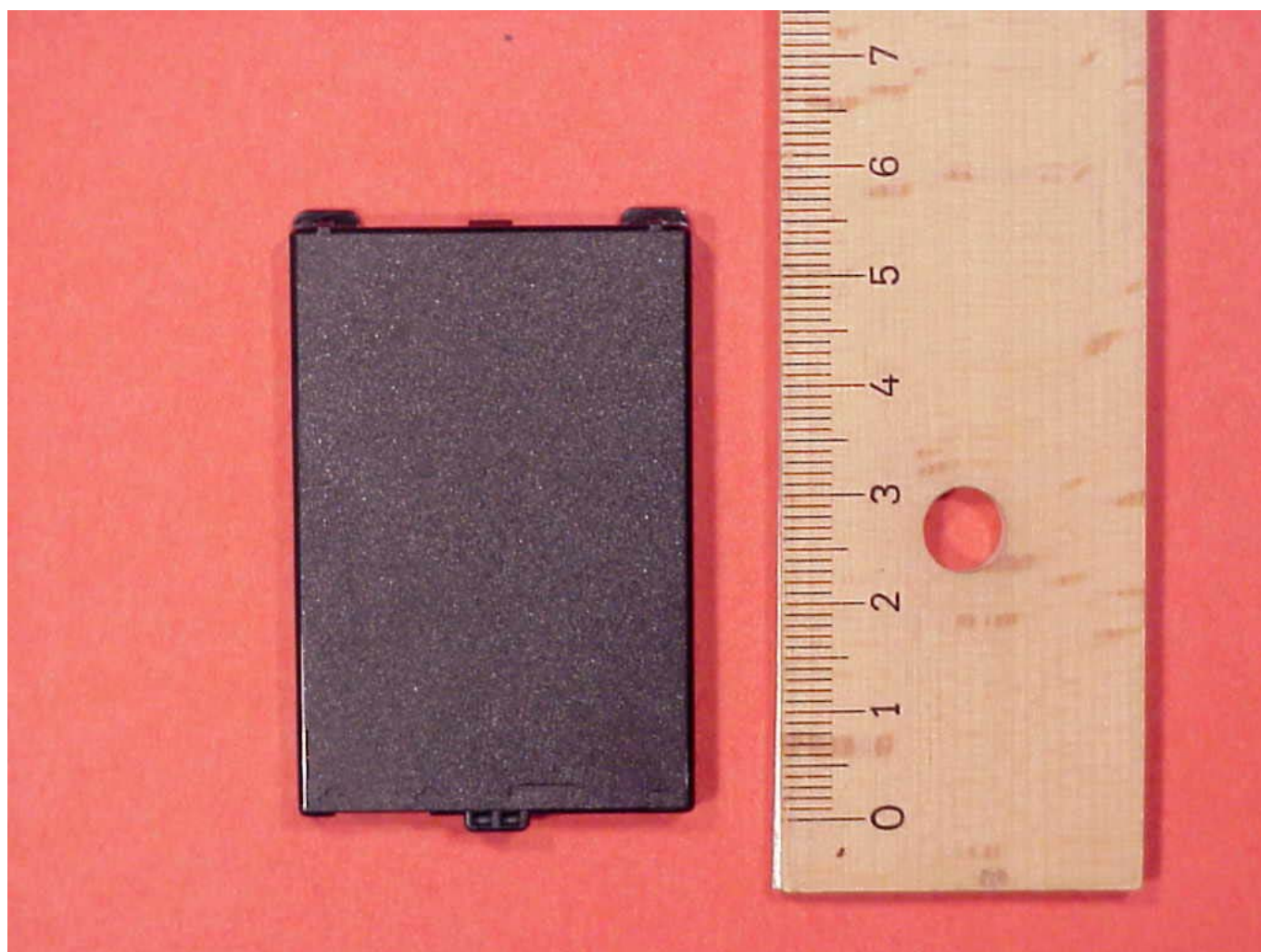
Picture no. 25

P2002 rear without battery



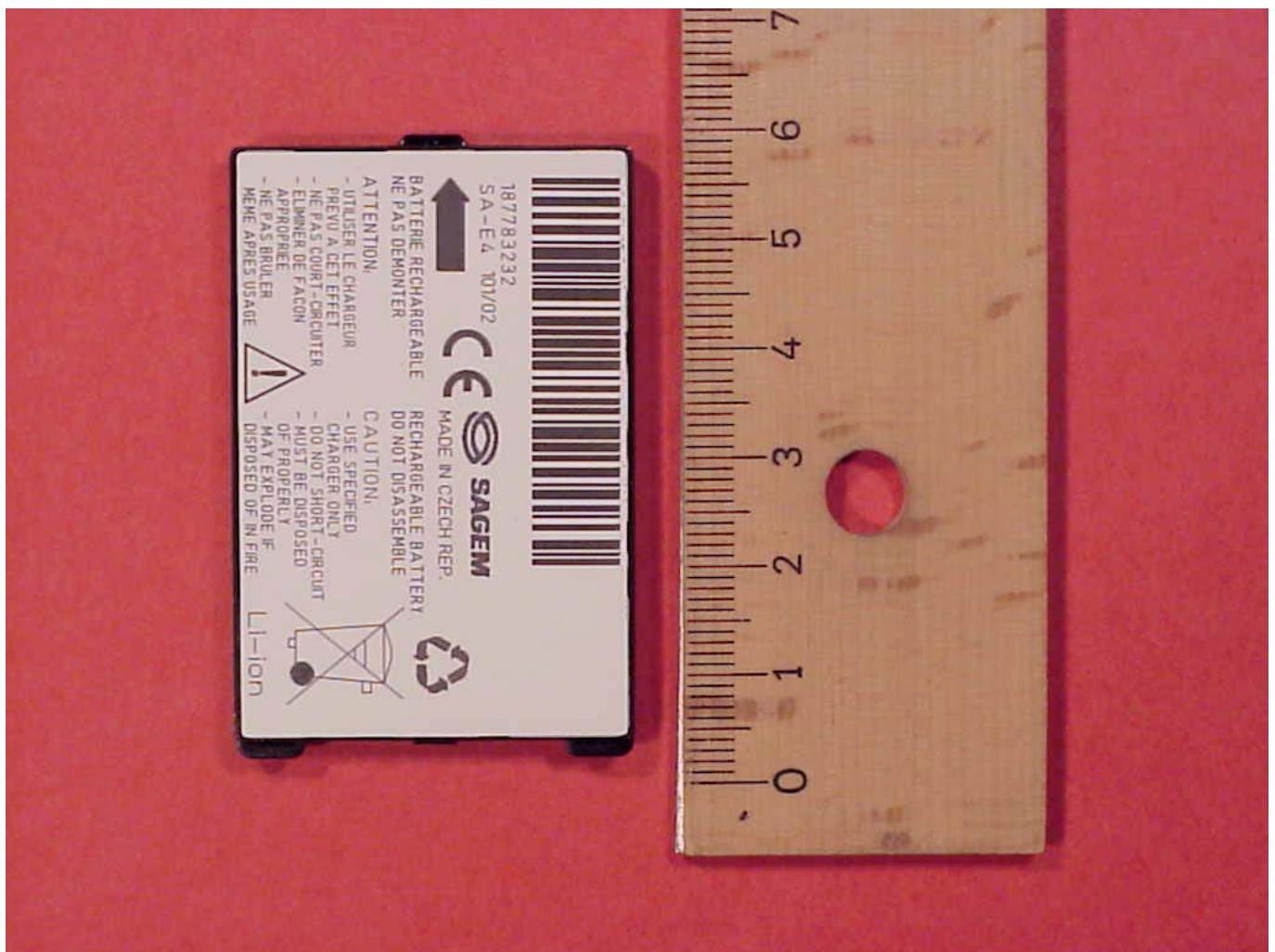
Picture no. 26

battery rear



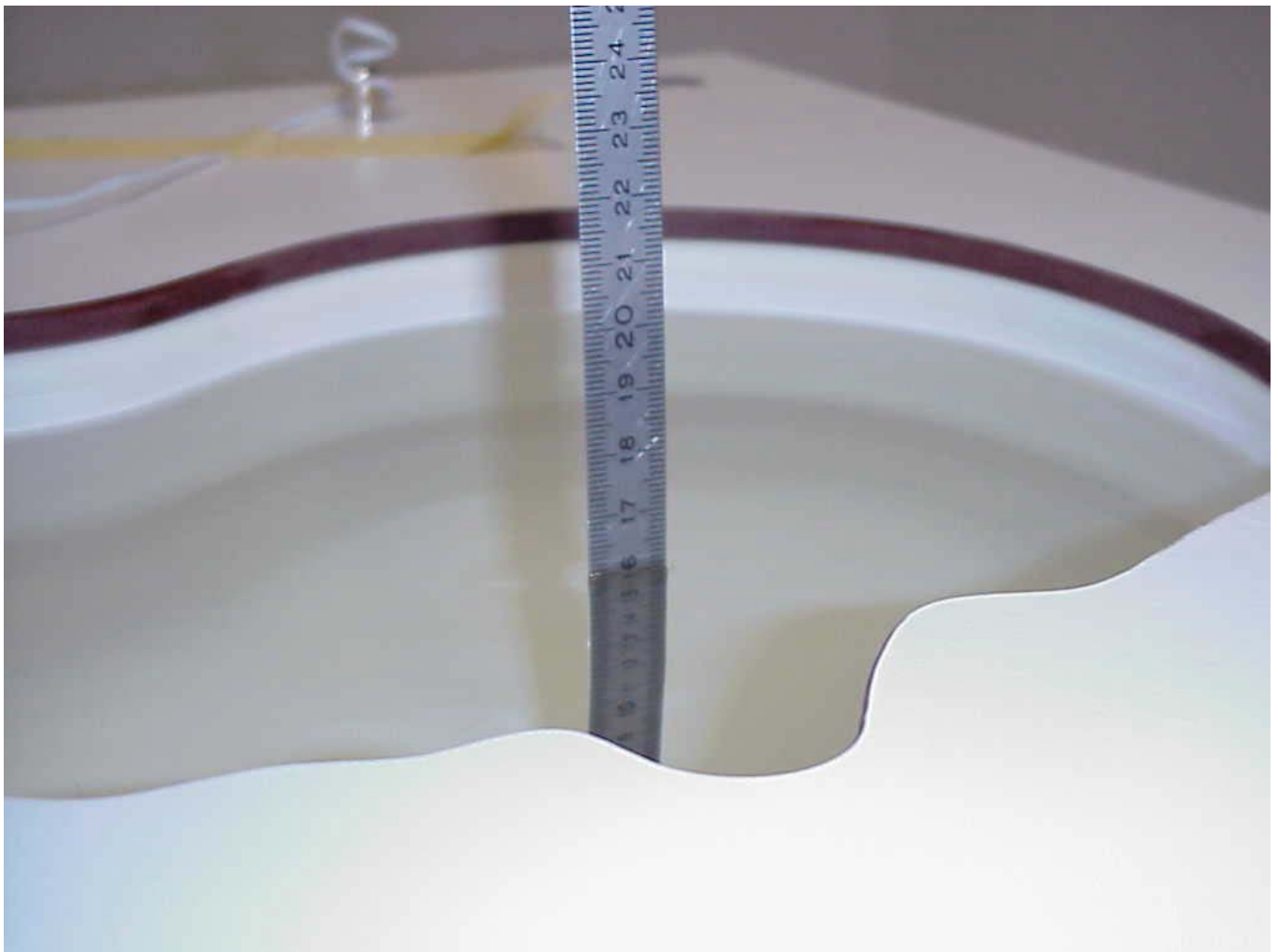
Picture no. 27

battery front



Picture no. 28

liquid depth head 1900 MHz



Picture no. 29

liquid depth body 1900 MHz

