

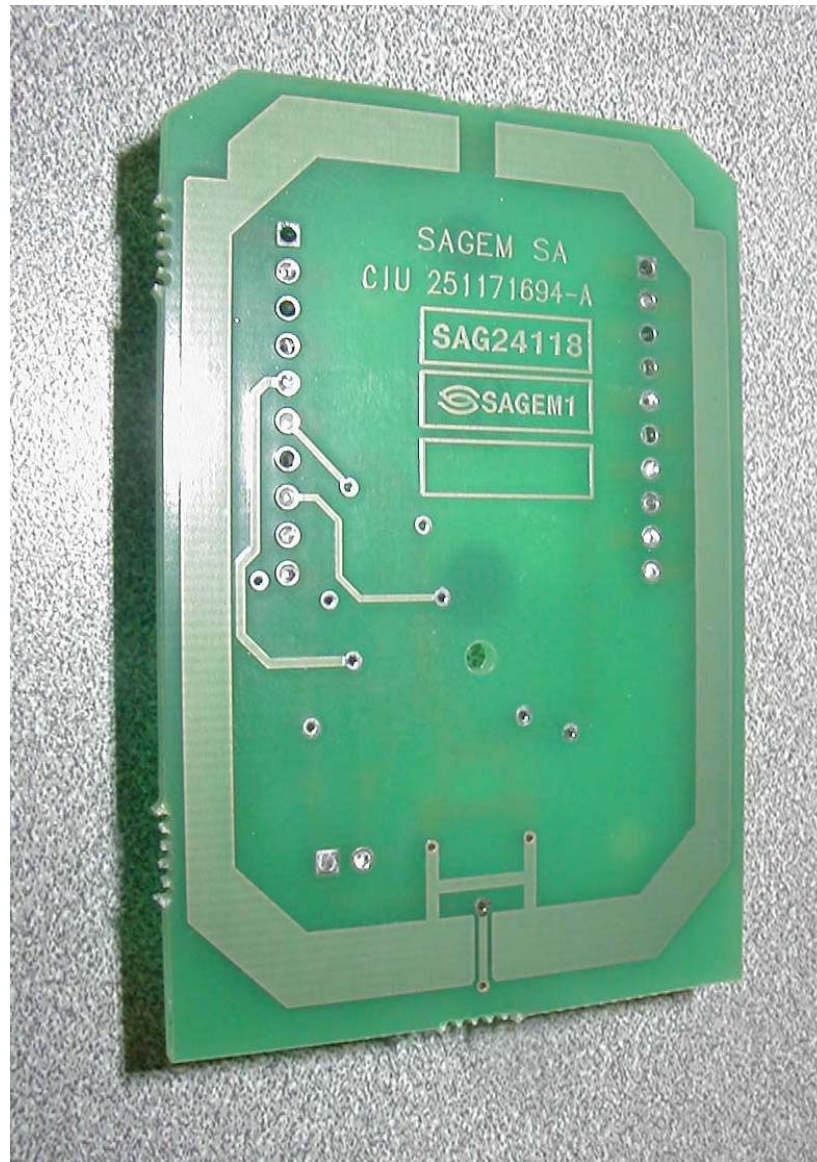
The antenna design consists of a permanently attached, integral, non-interchangeable radiating element and is therefore compliant with paragraph 15.203 of the FCC rules.

The device operates at $13.56 \text{ MHz} \pm 7 \text{ kHz}$ and this is not a Part 15.247 transmitter.

The unit operates only with the integral PCB loop-type antenna (internal SAGEM part number 3000015331).

Loop ☐
Antenna





SAGEM SA
CIU 251171694-A

SAG24118

SAGEM1