

Continuously Variable Speed Fan Controller

Model: RL-168



Model : TP-38

POWER:AC 120V~240V 50 / 60 Hz

FCC Compliance Statement:

This device complies with Part 15 of the FCC Rules.

Operation is subject to the following two conditions:

(1) This device may not cause harmful interference, and (2) This device must accept any interference received, including interference that may cause undesired operation.

CONGRATULATIONS ON YOUR CHOICE

Thank you and we are delighted you have chosen a Continuously Variable Speed Fan controller for your home please read all instructions carefully before assembly and use.

1

7. This product is for indoor use only.
8. This product requires 120~240V, 50~60 Hz Vac 60Hz power supply.
9. This product is to be used only for controlling a ceiling fan with an A.C. (Alternating Current) motor.
10. The remote controller receiver must be earthed during installation.
11. Do not pull or cut short lead wires.
12. Do not drop or bump the remote controller set.
13. Do not use this remote controller in conjunction with any variable (rheostat) wall controller.
14. Do not use the remote controller transmitter (handset) with any other receiver.
15. Keep battery out of reach of children.
16. This manual is not intended to instruct or assist untrained or unqualified persons to install this remote controller.
17. It is the responsibility of qualified, licensed installer and user to apply common sense and care at all times during installation and operation.

INSTALLATION INSTRUCTIONS

- ※ Make sure electricity is turned off at the main power box before commencing work. Turn off the power by removing fuse or turning off circuit breaker before installing remote controller.

3

SAFETY PRECAUTIONS

Please observe the following general safety precautions carefully before and during all phases of handling, installation, removal, operation and maintenance of this product. Failure to comply with these precautions violates safety standards of design, manufacture and intended use of the product.

We assume no liability for customer's failure to comply with these requirements.

SAFETY WARNINGS

1. Read all instructions and safety information. Review assembly diagrams provided before installing your new ceiling fan.
2. This remote controller must be installed according to local authority regulations.
3. This product is not intended for use by persons (including children) with reduced physical, sensory or mental capabilities, or lack of experience and knowledge, unless they have been given supervision or instruction concerning use of the appliance by a person responsible for their safety.
4. Young children should be supervised to ensure that they do not play with the appliance.
5. All electrical works must only be undertaken after disconnection of the power by removing fuses or turning off the circuit breaker, to ensure all pole isolation of the electrical supply.
6. Do not use outdoors where it could be exposed to water or moisture.

2

READ BEFORE INSTALLATION

1. Power supply to input wires of remote controller receiver must be connected through an isolation switch (e.g. wall switch).
2. Install remote controller receiver inside ceiling fan canopy to ensure proper protection.
3. Set ceiling fan speed control rotary switch (if any) to HIGH setting and control switch for light kit (if any) to ON position before operating remote control functions.
4. For ceiling fan with pull chain switches, set pull chain switches accordingly so that ceiling fan speed setting is at HIGH and fan light setting (if any) is at ON position before operating remote control functions.
5. Battery will weaken over time and should be replaced before leaking takes place as this will damage the transmitter. Dispose of used battery properly.
6. If remote controller is to be used for controlling a ceiling fan (i) with a low profile (hugger) design, or (ii) that has a smaller hanging bracket, then you should make sure the hanging bracket will fit remote controller receiver. Otherwise, if the receiver cannot be inserted into the hanging bracket due to dimension limitations or because there is no hanging bracket as may be in the case of a low profile (hugger design) ceiling fan, then the receiver can be enclosed in an Electrical Insulation Box (installation must comply to Australian wiring regulations) and placed in the ceiling. Electrical Insulation Box is not supplied. In this case, remember to draw the antenna / aerial wire away from the insulation box through a small hole.

4

HOW TO INSTALL REMOTE CONTROLLER ID CODE LEARNING

Each transmitter (handset) of RL-168 remote controller carries a unique Identity Code (ID Code) to facilitate communication between paired devices. The ID Code is set by factory and is not user changeable. The length of ID Code allows up to a million different code combinations, enabling independent control of multiple fans installed within a close proximity. A remote receiver must undergo an "ID code learning" process before it recognises and can communicate with the remote handset but this process had been completed in the factory so you can start using the remote controller once electrical installation is complete. However, you will be required to perform an "ID code learning" process manually under these circumstances:

- When you have multiple fans installed within a close proximity and want to control all fans using a same remote transmitter.
- When your remote controller is not responding (make sure battery is not flat)
- After you have replaced a faulty transmitter or receiver with a new one.

Otherwise the remote controller will not work. To perform this process manually, follow below steps:

INSTRUCTION: After turning on the AC power to the remote receiver, press and hold the transmitter "MODE" button for 5 seconds until the receiver beeps to indicate the code learning process had been completed. This operation must be completed within 1 minute after turning on the AC power.

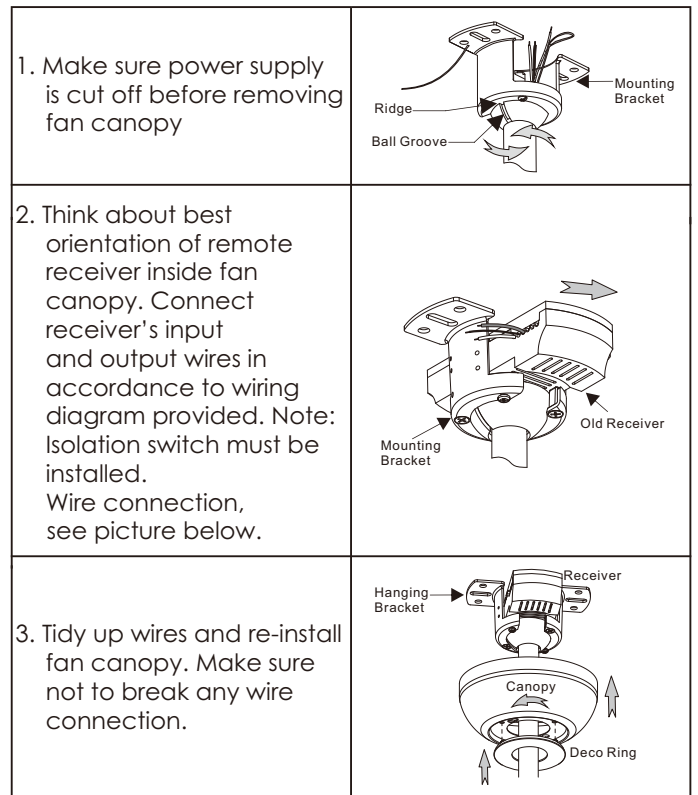
NOTE:

1. After completing the steps above, you should be able to

5

operate the ceiling fan and light. If the fan is not responding to the transmitter, turn off the power to the receiver and repeat the INSTRUCTION.

2. Check that battery is installed.
3. Remove the battery if not used for long period of time to prevent damage to the handset.



6

FUNCTIONS FAN CONTROL

ON/OFF: Toggle fan on or off

- When Normal mode is activated, you can manually control and set the fan speed

SPEED: Press once of ▲High or ▼low to increase / decrease fan speed. There are eight (8) fan speeds. Press and hold of ▲High or ▼low to increase / decrease fan speed by 1% from 25% to 90%

MODE: Press button to choose between Normal, Breeze, Sleep, Delay, Timer off 1, 3, 6 Hours mode.

- When Breeze mode is activated, the word BREEZE appears on screen. The fan speed is auto-regulated by program generating comforting winds
- When Sleep mode is activated, the word SLEEP appears on screen. From the initial speed, that is the set speed when this function is activated, the fan speed automatically steps down one 1% every 8 minutes until it reaches the 50% speed of starting sleep speed.
- When the Delay mode is activated, the word Delay appears on screen and will turning off the fan and light after 2 minutes.
- When the Timer off mode is activated, the word Timer appears on screen and will turning off the fan after 1,3 or 6 hours.

LIGHT CONTROL

ON/OFF: Press once to toggle fan light on or off.

Note: Replace batteries when battery symbol is shown.



7

Making electrical wire connection

Follow diagram below and make sure that all exposed wires are secured inside wire nuts or terminal block.

Note : Wires from house may vary in color and may not include ground wire (green).

- *White wire from house to white wire from fan
- *Black wire from house to black wire from fan
- *Ground wire from house to green wires from downrod and from mounting bracket
- *Secure with twist - lock wire nuts (provided from hardware bag)
- *Gently push wires into junction box with wire nuts pointing upward.

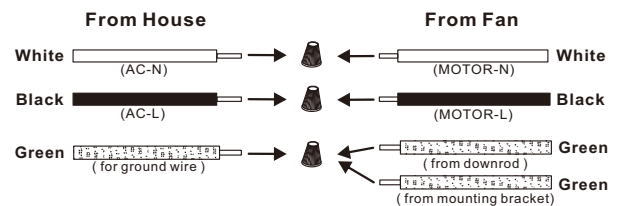


Fig 1.

8