

**Advantech Co., Ltd**

**Ultra Rugged Mobile Computer  
User Manual**

**Model no.: PWS-8101M Series  
(Ralink RT2561T)**

Advantech Co., Ltd  
Integrated Baseband and MAC Solution  
IEEE 802.11b/g WLAN  
2008/3/29

## Contents:

Contents:.....	2
Introduction.....	3
Install the WLAN card .....	4
Install PWS-8101M Series (Ralink RT2561T) Driver .....	5
Federal Communications Commission (FCC) Requirements .....	7

## **Introduction**

The Wireless LAN Configuration Utility is a powerful application that helps you to configure this WLAN card and monitor the statistics of the communication status. Unlike the standard method of configuring the card via the operating system utilities, this application permits the dynamic modification of the configuration parameters while the card is operating. It also offers more configuration options.

We offer the Wireless LAN Configuration Utility for Windows® 98SE/Me/2000/XP. Mini-PCI WLAN equipment has been tested and found to comply with limits for a Class B digital device, pursuant to Part 15 of the FCC rules. These limits are designed to provide reasonable protection against harmful interference in residential installations.

This equipment generates, uses, and can radiate radio frequency energy, and if not installed and used in accordance with the instructions, may cause harmful interference to radio communications.

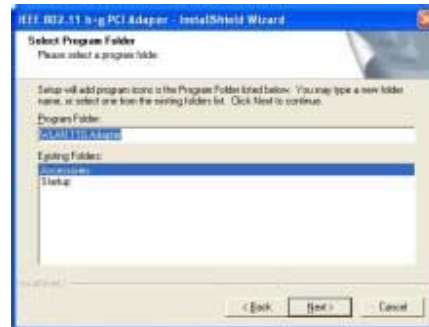
## **Install the WLAN card**

- Release the screw from PC/NB
- Find out the pre-wired cable
- Connect the cable with Mini-PCI (“Main” connector)
- Align and firmly plug the Mini-PCI card into the slot.
- Re-place the cover to Device Secure the screw with a cross screwdriver.

## Install PWS-8101M Series (Ralink RT2561T) Driver



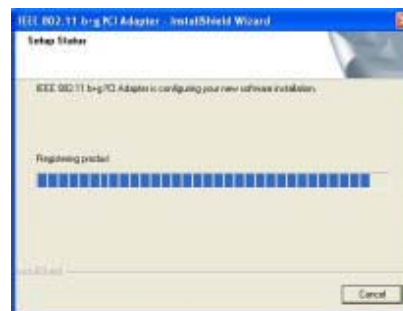
The program will automatically proceed with installing.



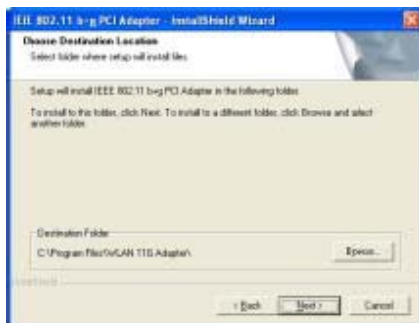
Select or create a program folder and press "Next" to continue.



Press "Next" to continue



The program will automatically proceed with installing.



Press "Browse" to change the folder where setup will install files or press "Next" to continue.



Press "Yes" to continue.



Press "Continue" to continue the process.



Press "Finish" to complete the installation



Insert the Wireless Card to slot of NB and choose "Install the software automatically (Recommended)" and press "Next".

### **Federal Communications Commission (FCC) Requirements**

This equipment has been tested and found to comply with the limits for a Class B digital device, pursuant to part 15 of the FCC rules. These limits are designed to provide reasonable protection against harmful interference in a residential installation. This equipment generates uses and can radiate radio frequency energy and, if not installed and used in accordance with the instructions, may cause harmful interference to radio communications. However, there is no guarantee that interference will not occur in a particular installation. If this equipment does cause harmful interference to radio or television reception, which can be determined by turning the equipment off and on, the user is encouraged to try to correct the interference by one or more of the following measures:

- Reorient or relocate the receiving antenna.
- Increase the separation between the equipment and receiver.
- Connect the equipment into an outlet on a circuit different from that to which the receiver is connected.
- Consult the dealer or an experienced radio/TV technician for help.

### **INFORMATION:**

This Transmitter must not be co-located or operating in conjunction with any other antenna or transmitter.

Any changes or modifications (including the antennas) made to this device that are not expressly approved by the manufacturer may void the user's authority to operate the equipment.

### **End Product Labeling**

This transmitter module is authorized only for use in devices where the antenna may be installed such that 20 cm may be maintained between the antenna and users. The final end product must be labeled in visible area with the following:

“Contains TX FCC ID: M82-PWS-8101M”

### **End Product Manual Information**

The user manual for end users must include the following information in a prominent location “IMPORTANT NOTE: To comply with FCC RF exposure compliance requirements, the antenna used for this transmitter must be installed to provide a separation distance of at least 20cm from all persons and must not be co-located or operating in conjunction with any other antenna or transmitter.”

This device complies with part 15 of the FCC rules. Operation is subject to the following two conditions

- (1) This device may not cause harmful interference and
- (2) This device must accept any interference received, including interference that may cause undesired operation

### **IMPORTANT NOTE:**

In the event that these conditions can not be met (for example certain laptop configurations or co-location with another transmitter), then the FCC authorization is no longer considered valid and the FCC ID can not be used on the final product. In these circumstances, the OEM integrator will be responsible for re-evaluating the end product (including the transmitter) and obtaining a separate FCC authorization.

This device is intended only for OEM integrators under the following conditions:

The antenna must be installed such that 20 cm is maintained between the antenna and users. As long as a condition above is met, further transmitter test will not be required. However, the OEM integrator is still responsible for testing their end-product for any additional compliance requirements required with this module installed (for example, digital device emissions, PC peripheral requirements, etc.).