

T02 802.11b_Ant 1+2_Left Side_Ch1_Battery 1

DUT: 1603230;

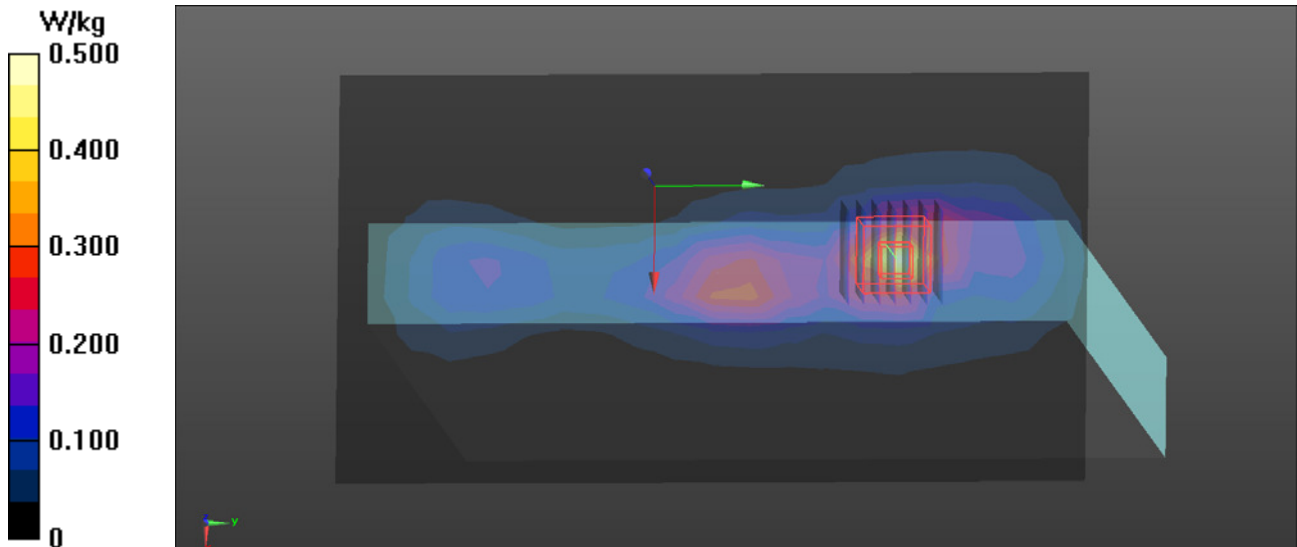
Communication System: UID 0, WiFi (0); Frequency: 2412 MHz; Duty Cycle: 1:1
Medium parameters used: $f = 2412$ MHz; $\sigma = 1.919$ S/m; $\epsilon_r = 53.201$; $\rho = 1000$ kg/m³
Ambient Temperature : 21.9 °C; Liquid Temperature : 21.3 °C

DASY Configuration:

- Probe: EX3DV4 - SN7369; ConvF(7.19, 7.19, 7.19); Calibrated: 8/18/2015;
- Sensor-Surface: 2mm (Mechanical Surface Detection), $z = 1.0, 31.0$
- Electronics: DAE4 Sn1486; Calibrated: 8/27/2015
- Phantom: Oval Flat Phantom ELI 5.0; Type: QD OVA 002 A ; Serial: TP-1240
- DASY52 52.8.8(1222); SEMCAD X 14.6.10(7331)

Area Scan (12x21x1): Measurement grid: $dx=12$ mm, $dy=12$ mm
Maximum value of SAR (measured) = 0.500 W/kg

Zoom Scan (7x7x7)/Cube 0: Measurement grid: $dx=5$ mm, $dy=5$ mm, $dz=5$ mm
Reference Value = 11.73 V/m; Power Drift = -0.11 dB
Peak SAR (extrapolated) = 0.662 W/kg
SAR(1 g) = 0.343 W/kg; SAR(10 g) = 0.170 W/kg
Maximum value of SAR (measured) = 0.506 W/kg



T07 802.11n_TH40_Ant 1+2_Left Side_Ch38_Battery 1

DUT: 1603230;

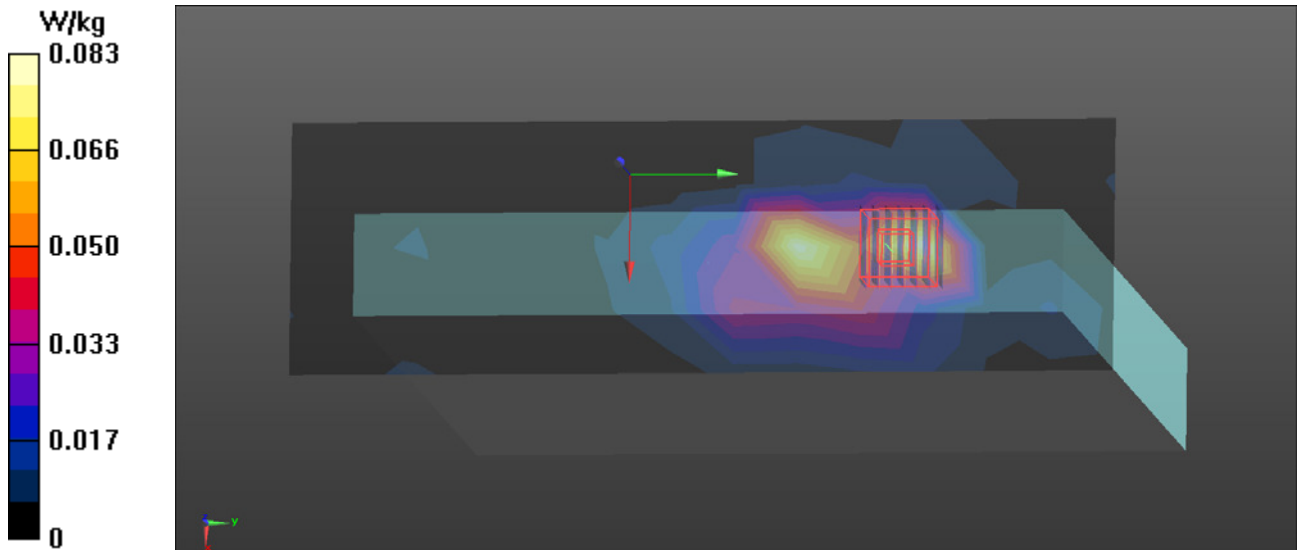
Communication System: UID 0, WiFi (0); Frequency: 5190 MHz; Duty Cycle: 1:1
Medium parameters used: $f = 5190$ MHz; $\sigma = 5.327$ S/m; $\epsilon_r = 47.626$; $\rho = 1000$ kg/m³
Ambient Temperature : 22.2 °C; Liquid Temperature : 21.5 °C

DASY Configuration:

- Probe: EX3DV4 - SN7369; ConvF(4.57, 4.57, 4.57); Calibrated: 8/18/2015;
- Sensor-Surface: 2mm (Mechanical Surface Detection), $z = 1.0, 21.0$
- Electronics: DAE4 Sn1486; Calibrated: 8/27/2015
- Phantom: Oval Flat Phantom ELI 5.0; Type: QD OVA 002 A ; Serial: TP-1240
- DASY52 52.8.8(1222); SEMCAD X 14.6.10(7331)

Area Scan (10x28x1): Measurement grid: $dx=10$ mm, $dy=10$ mm
Maximum value of SAR (measured) = 0.0826 W/kg

Zoom Scan (7x7x11)/Cube 0: Measurement grid: $dx=4$ mm, $dy=4$ mm, $dz=2$ mm
Reference Value = 2.627 V/m; Power Drift = 0.09 dB
Peak SAR (extrapolated) = 0.230 W/kg
SAR(1 g) = 0.068 W/kg; SAR(10 g) = 0.028 W/kg
Maximum value of SAR (measured) = 0.124 W/kg



T12 802.11n_TH20_Ant 1+2_Left Side_Ch56_Battery 1

DUT: 1603230;

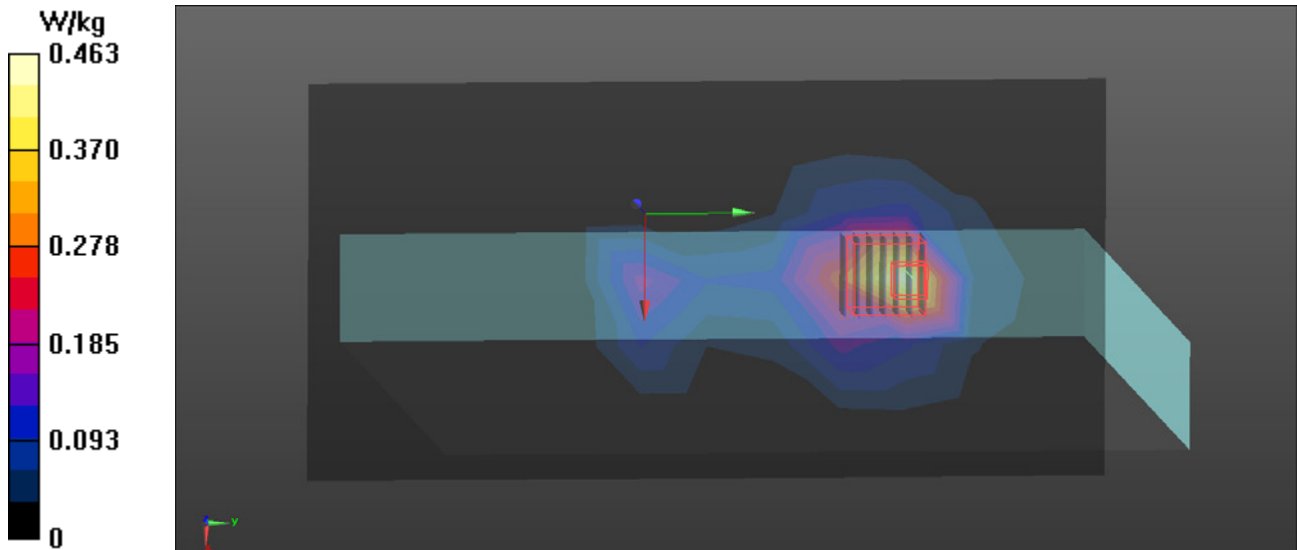
Communication System: UID 0, WiFi (0); Frequency: 5280 MHz; Duty Cycle: 1:1
Medium parameters used: $f = 5280$ MHz; $\sigma = 5.462$ S/m; $\epsilon_r = 47.493$; $\rho = 1000$ kg/m³
Ambient Temperature : 22.2 °C; Liquid Temperature : 21.5 °C

DASY Configuration:

- Probe: EX3DV4 - SN7369; ConvF(4.38, 4.38, 4.38); Calibrated: 8/18/2015;
- Sensor-Surface: 2mm (Mechanical Surface Detection), $z = 1.0, 21.0$
- Electronics: DAE4 Sn1486; Calibrated: 8/27/2015
- Phantom: Oval Flat Phantom ELI 5.0; Type: QD OVA 002 A ; Serial: TP-1240
- DASY52 52.8.8(1222); SEMCAD X 14.6.10(7331)

Area Scan (14x26x1): Measurement grid: $dx=10$ mm, $dy=10$ mm
Maximum value of SAR (measured) = 0.463 W/kg

Zoom Scan (7x7x11)/Cube 0: Measurement grid: $dx=4$ mm, $dy=4$ mm, $dz=2$ mm
Reference Value = 4.907 V/m; Power Drift = 0.13 dB
Peak SAR (extrapolated) = 0.912 W/kg
SAR(1 g) = 0.253 W/kg; SAR(10 g) = 0.082 W/kg
Maximum value of SAR (measured) = 0.474 W/kg



T17 802.11n_TH20_Ant 1+2_Left Side_Ch136_Battery 1

DUT: 1603230;

Communication System: UID 0, WiFi (0); Frequency: 5680 MHz; Duty Cycle: 1:1
Medium parameters used: $f = 5680$ MHz; $\sigma = 6.033$ S/m; $\epsilon_r = 46.689$; $\rho = 1000$ kg/m³
Ambient Temperature : 22.2 °C; Liquid Temperature : 21.5 °C

DASY Configuration:

- Probe: EX3DV4 - SN7369; ConvF(3.81, 3.81, 3.81); Calibrated: 8/18/2015;
- Sensor-Surface: 2mm (Mechanical Surface Detection), $z = 1.0, 21.0$
- Electronics: DAE4 Sn1486; Calibrated: 8/27/2015
- Phantom: Oval Flat Phantom ELI 5.0; Type: QD OVA 002 A ; Serial: TP-1240
- DASY52 52.8.8(1222); SEMCAD X 14.6.10(7331)

Area Scan (9x15x1): Measurement grid: $dx=20$ mm, $dy=20$ mm
Maximum value of SAR (measured) = 0.387 W/kg

Zoom Scan (7x7x11)/Cube 0: Measurement grid: $dx=4$ mm, $dy=4$ mm, $dz=2$ mm
Reference Value = 5.140 V/m; Power Drift = -0.05 dB
Peak SAR (extrapolated) = 0.802 W/kg
SAR(1 g) = 0.277 W/kg; SAR(10 g) = 0.155 W/kg
Maximum value of SAR (measured) = 0.408 W/kg

