

# User Manual

## AMIS-850

AMIS-EMXXXXXXXX-XXX

**ADVANTECH**

*Enabling an Intelligent Planet*

## Copyright

The documentation and the software included with this product are copyrighted 2019 by Advantech Co., Ltd. All rights are reserved. Advantech Co., Ltd. reserves the right to make improvements in the products described in this manual at any time without notice. No part of this manual may be reproduced, copied, translated or transmitted in any form or by any means without the prior written permission of Advantech Co., Ltd. Information provided in this manual is intended to be accurate and reliable. However, Advantech Co., Ltd. assumes no responsibility for its use, nor for any infringements of the rights of third parties, which may result from its use.

## Acknowledgements

Intel and Pentium are trademarks of Intel Corporation.

Microsoft Windows and MS-DOS are registered trademarks of Microsoft Corp.

All other product names or trademarks are properties of their respective owners.

## Instructions for the User

The document combines text and illustrations, providing a comprehensive overview of the system. The information is presented as a sequential step of actions, allowing the user to learn directly how to use the device.

The text provides explanations and instructs the user step-by-step in the practical use of the product, with short, clear instructions in an easy-to-follow sequence.

## **Federal Communication Commission Interference Statement**

This device complies with Part 15 of the FCC Rules. Operation is subject to the following two conditions: (1) This device may not cause harmful interference, and (2) this device must accept any interference received, including interference that may cause undesired operation.

This equipment has been tested and found to comply with the limits for a Class B digital device, pursuant to Part 15 of the FCC Rules. These limits are designed to provide reasonable protection against harmful interference in a residential installation. This equipment generates, uses and can radiate radio frequency energy and, if not installed and used in accordance with the instructions, may cause harmful interference to radio communications. However, there is no guarantee that interference will not occur in a particular installation. If this equipment does cause harmful interference to radio or television reception, which can be determined by turning the equipment off and on, the user is encouraged to try to correct the interference by one of the following measures:

- Reorient or relocate the receiving antenna.
- Increase the separation between the equipment and receiver.
- Connect the equipment into an outlet on a circuit different from that to which the receiver is connected.
- Consult the dealer or an experienced radio/TV technician for help.

FCC Caution: Any changes or modifications not expressly approved by the party responsible for compliance could void the user's authority to operate this equipment.

This transmitter must not be co-located or operating in conjunction with any other antenna or transmitter.

### **Radiation Exposure Statement:**

For body worn operation, this device has been tested and meets FCC RF exposure guidelines. When used with an accessory that contains metal may not ensure compliance with FCC RF exposure guidelines.

## Warnings, Cautions and Notes

**Warning!** A **WARNING** statement provides important information about a potentially hazardous situation which, if not avoided, could result in death or



serious injury.

**Caution!** A **CAUTION** statement provides important information about a potentially hazardous situation which, if not avoided, may result in minor or



moderate injury to the user or patient or in damage to the equipment or other property. Please contact a qualified technician or your retail provider for its replacement. Do not do it by yourself.

**Note!** A **NOTE** provides additional information intended to avoid inconveniences.



### **Within the European Union**



**EU-wide legislation, as implemented in each Member State, requires that waste electrical and electronic products carrying the mark (left) must be disposed of separately from normal household waste.**

**This includes monitors and electrical accessories, such as signal cables or power cords. When you need to dispose of your display products, please follow the**

**EU-wide legislation, as implemented in each Member State, requires that waste electrical and electronic products carrying the mark (left) must be disposed of separately from normal household waste. This includes monitors and**

**electrical accessories, such as signal cables or power cords. When you need to dispose of your display products, please follow the guidance of your local authority, or ask the shop where you purchased the product, or if applicable, follow any agreements made between yourself.**

Part No.  
Printed in Taiwan

Edition 1  
Apr 2021

# Product Warranty

## WHAT'S COVERED & HOW LONG

Standard warranty covers two (2) - years structural components, two (2) - years for the system and electronics.

- Warranty coverage begins on product's date of delivery. Standard warranty does not cover problem resulting from product abuse, negligence/accident, misuse, improper operation, post-delivery physical damage, and/or product modifications without Advantech's prior written approval.
- External peripherals (including: computing equipment/devices, monitors, key- boards, mouse, are not included in this warranty.

Advantech shall not be liable for any consequential or incidental damages.

## HOW WE HELP YOU

Support services provided along with the standard warranty must be requested within the expressed warranty time frame for the product element.

- Technical support may request customer collaboration and assistance during diagnosis to provide for the next business day service resolution. Typically, this requires, but is not limited to:
- Identifying a primary contact representative (with phone number and e-mail address) to work with Advantech and answer relevant questions.
- Providing the serial ID number and access to the product.
- Performing basic troubleshooting activities as directed by Advantech Technical Support.

Resolution methods can include, but are not limited to, any of the following:

- Verbal/written instructions to correct the problem.
- Shipping of replacement parts.
- On-site dispatch of an Advantech authorized service technician.

If needed, Advantech will involve its design engineers or supplier partners for resolution assistance and customer's satisfaction. Determination for resolving warranty issues will be at Advantech's sole discretion.

## Safety Instructions

1. Strictly follow these instructions for use; please read these safety instructions carefully.
2. Keep this user manual for later reference; any use of the product requires full understanding and strict observation of all portions of these instructions. Observe all.
3. Repair of the device may also only be carried out by trained service personnel.
4. Advantech recommends that a service contract be obtained with Advantech Service and that all repairs also be carried out by them. Otherwise the correct functioning of the device may be compromised.

**Warning!** *Because of the danger of electric shock, never remove the box of a device while it is in operation or connected to a power outlet.*



5. If one of the following situations arises, get the equipment checked by service personnel:
  - The power cord or plug is damaged.
  - Liquid has penetrated into the equipment.
  - The equipment has been exposed to moisture.
  - The equipment does not work well, or you cannot get it to work according to the user manual.
  - The equipment has been dropped and damaged.
  - The equipment has obvious signs of breakage.
6. Disconnect this equipment from any AC outlet before cleaning. Use a damp cloth. Do not use liquid or spray detergents for cleaning and keep this equipment away from humidity.

**Caution!** *To avoid short-circuits and otherwise damaging the device, do not allow fluids to come in contact with the device. If fluids are accidentally spilled on the equipment, remove the affected unit from service as soon as possible and contact service personnel to verify that patient safety is not compromised.*



7. Put this equipment on a reliable surface during installation. Dropping it or letting it fall may cause damage. For plug-in equipment, the power outlet socket must be located near the equipment and must be easily accessible.

**Caution!** *Do not leave this equipment in an uncontrolled environment where the storage temperature is below 0° C or above 50° C. This may damage the equipment.*



8. Grounding reliability can only be achieved when the equipment is connected to an equivalent receptacle marked “Hospital Only” or “Hospital Grade”.
9. Use a power cord that matches the voltage of the power outlet, which has been approved and complies with the safety standard of your particular country.
10. If the integrity of the protective earth conductor is in doubt. Please turn off

- the power switch.
11. To disconnect this product from the mains supply disconnects the mains plug from the socket outlet. The power supply is regarded as part of this equipment.
  12. Make sure user not to contact SIP/SOPs and the patient at the same time.
  13. Do not switch on/off the power switch of the battery system during operation.

**Warning!** *To avoid risk of electric shock, this equipment must only be connected to a supply mains with protective earth.*



**Warning!** *No modification of this equipment is allowed.*



14. The power cord for use on the device shall be no less robust than ordinary tough rubber sheathed flexible cord (IEC 60245-1:2003, Annex A, designation 53) or ordinary polyvinyl chloride sheathed flexible cord (IEC 60227-1:1993, Annex A, design. 53). For the US/CA the requirements of the NEC and Canadian code shall be followed (US and CA national differences).

**Warning!** *Battery system, equipotential pin, metal wiring on equipotential pin, wheels and brake shall be replaced/send back to maintain by the manufacturer every two years, risks of function failure, electrical shock, equipment damage, environment pollution and etc. may occur if not doing so.*



15. If your computer clock is unable to keep accurate time or the BIOS configuration resets to default, please check the battery.

**Caution!** *Do not replace the battery yourself. Please contact a qualified technician or your retailer.*



*The computer is provided with a battery-powered real-time clock circuit. There is a danger of explosion if battery is incorrectly replaced. Replace only with same or equivalent type recommended by the manufacturer. Discard used batteries according to the manufacturer's instructions.*

**Caution!** *When servicing the device, always use replacement parts that meet Advantech standards. Advantech Medical cannot warrant or endorse the safe performance of third-party replacement parts for use with our medical device.*



**Caution!** *Application User: This device is provided to professional nurses/caregivers and technicians. Cannot be used by people other than nurses/caregivers and technicians*



16. CLASSIFICATION:
  - Supply Class I adapter
  - No applied part





# Safety Information

For your own safety and that of your equipment, always take the following precautions.

Disconnect the power plug (by pulling the plug, not the cord), from your computer if any of the following conditions exists:

- The power cord or plug becomes frayed or otherwise damaged
- Your eMedication box has been damaged
- You suspect that your computer needs service or repair
- You want to clean the eMedication box
- You want to remove/install any parts

## GROUNDING

Connect the AMiS eMedication box to an equivalent receptacle marked "Grounding material" to ensure ground.

## SERVICE AND REPLACEMENT

Do not attempt to service or replace any part of the AMiS eMedication box unless directed to do through Advantech approved documentation (i.e., this User Manual or other instructions). Only Advantech or an Advantech certified entity may service or replace the cart components. If any component on the cart is missing or damaged, the cart must not be used. Contact Advantech immediately to request service. The non-detachable power cord is not intended to be replaced by anyone except for Advantech approved professionals, the power cord can only be the ones that matches the voltage of the power outlet, as well as been approved and complies with the safety standard of your particular country.

## DO NOT OPEN THE POWER SYSTEM

Unauthorized personnel opening the power system may cause injury and/or death. If the unit is not working properly, please contact Advantech.

We are not allowing customer to swap battery pack or cells, if we find the power system be opened/disassembly by customer, Advantech will not guaranty the power system warranty from then on.

## DO NOT USE THE UNIT IN OR NEAR WATER OR OTHER LIQUIDS

If the unit becomes wet, unplug it immediately, wipe away any excess liquid and allow it to dry before use.

Failure to do so can result in injury and/or death.

## DO NOT MOVE THE EQUIPMENT WHEN THERE IS PEOPLE AROUND

If there are people around the equipment, in order to avoid people's hands stuck on the iron bars, do not move the equipment.

Failure to do so may cause harm to people's hands.

## Additional Information and Assistance

1. Visit the Advantech website at <http://support.advantech.com> where you can find the latest information about the product.
2. Contact your distributor, sales representative, or Advantech's customerservice center for technical support if you need additional assistance. Please have the following information ready before you call:
  - Product name and serial number
  - Description of your peripheral attachments
  - Description of your software (operating system, version, application software, etc.)
  - A complete description of the problem
  - The exact wording of any error messages
  - This equipment is a source of electromagnetic waves. Before use please make sure that there are not EMI sensitive devices in its surrounding which may otherwise malfunction

### **Environmental Protection**

- Follow national requirements to dispose of unit.

## S

### AMiS-850 User manual

#### Item

- AMiS-850 outlook
- Manual unlock function
- DC-12V power adapter and cable
- Electronic control function USB cable
- Mounting design

#### 1.AMiS-850 Outlook



manual unlock key



Power cable and control USB cable.

## **2. Manual unlock function**



insert key into the key hole. Turn the key clockwise to release all the bins.

## **3. DC-12V power adapter and cable**

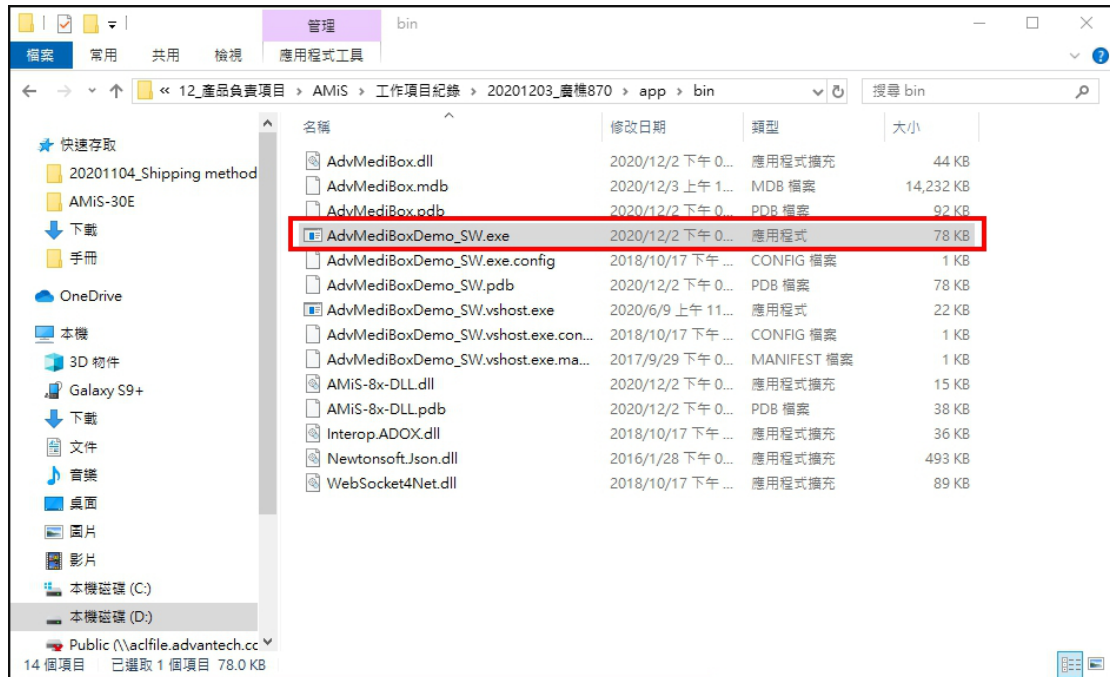


Power on function: using a DC-12V adapter to connect the medication box.

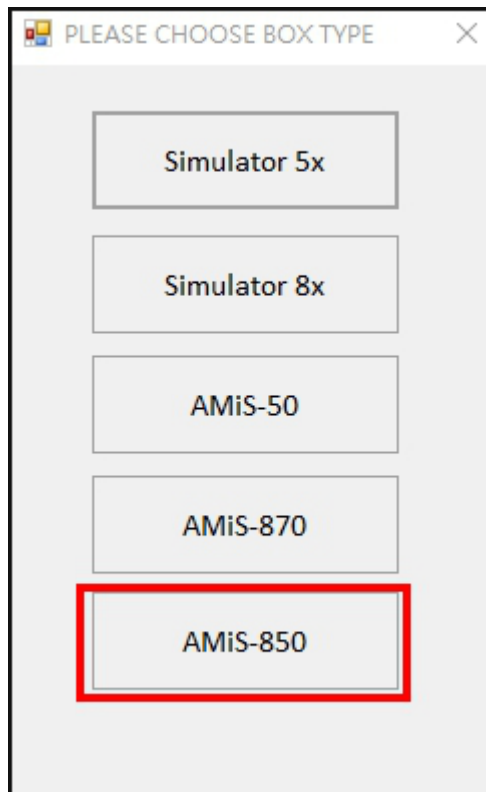
Connection function : Using USB cable to connect with medication box, and check device manager has COM port device.

## 4. Electronic control function USB cable

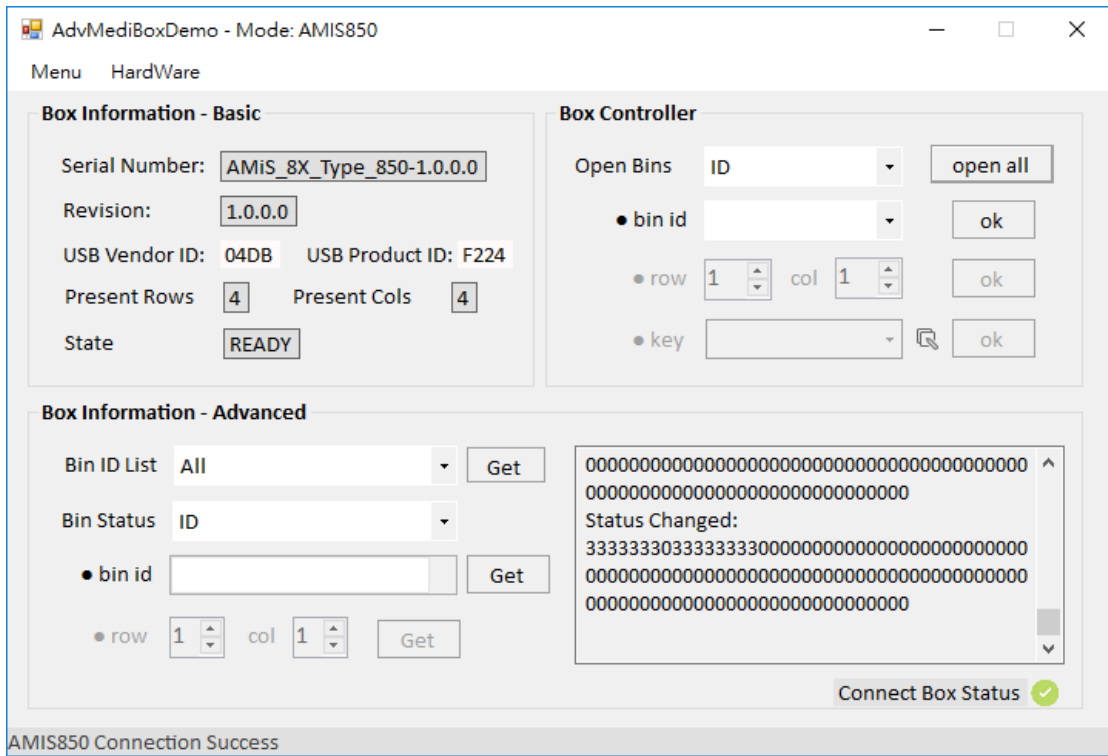
Route \app\bin\AdvMediBoxDemo\_SW



Select AMiS-850

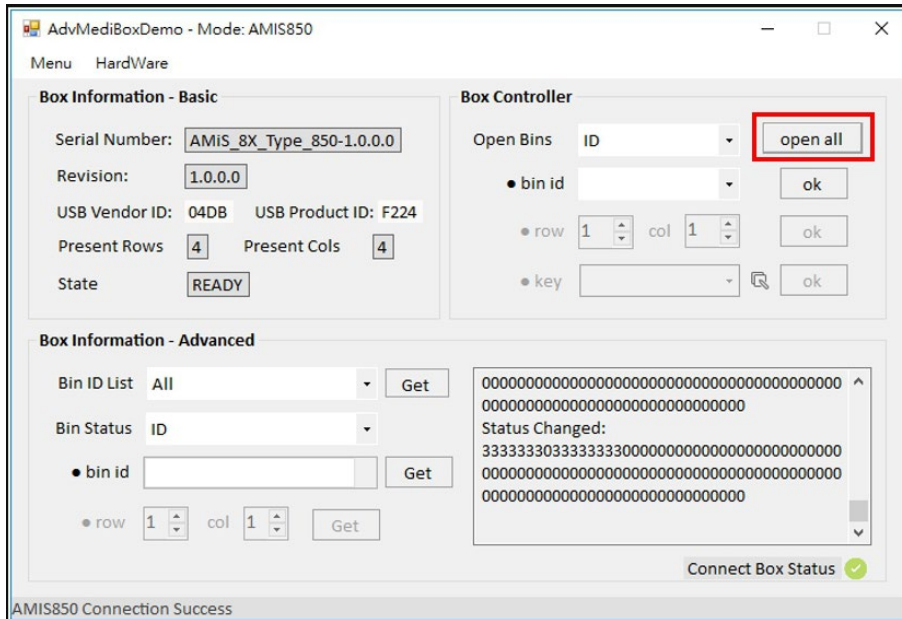


Check error message come out or not.

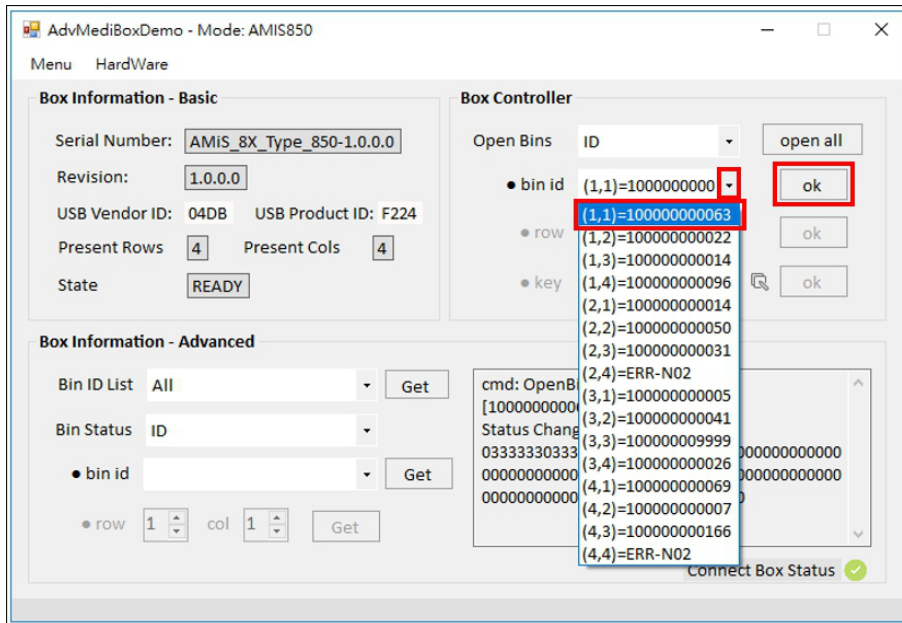


Close 16 bin, and select open all to open all the bins.



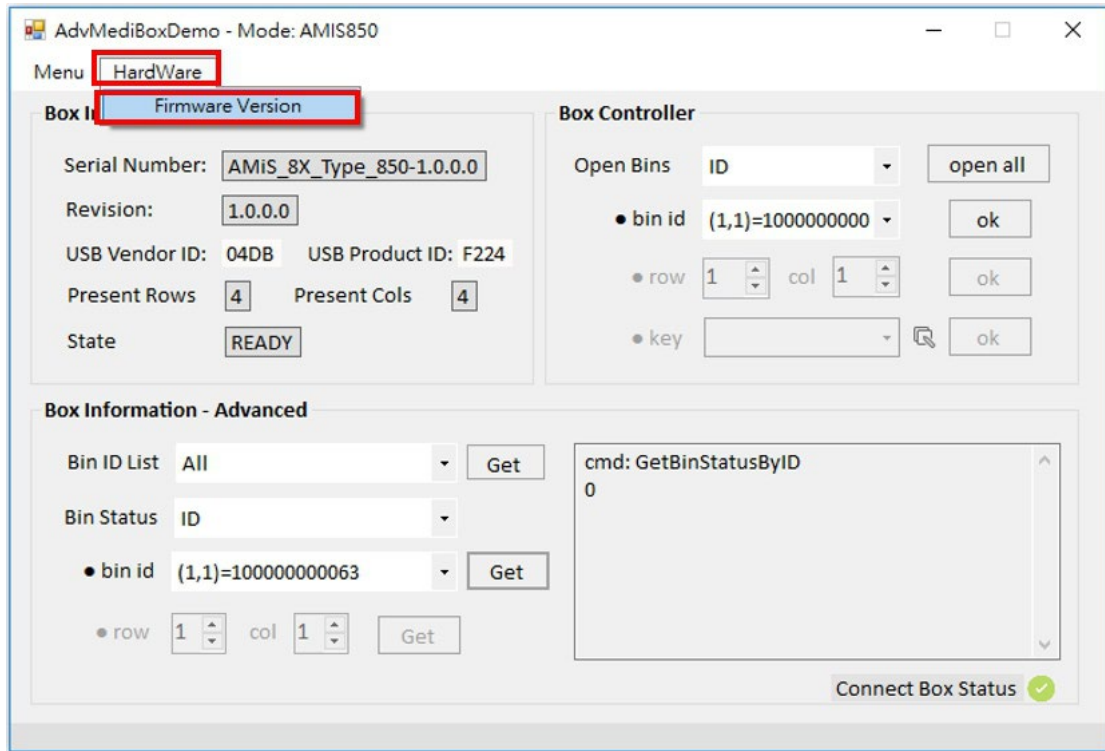


Close 16 bin, and select bin ID to check all the bins ID.



Firmware version checking

Hardware→Firmware version, will show all the PCB FW information.





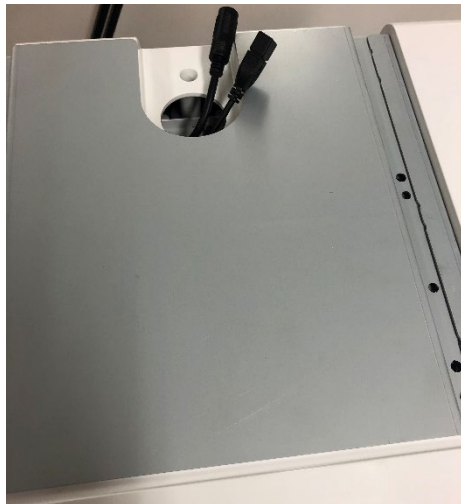
## **5. Mounting design**

Basic mounting description

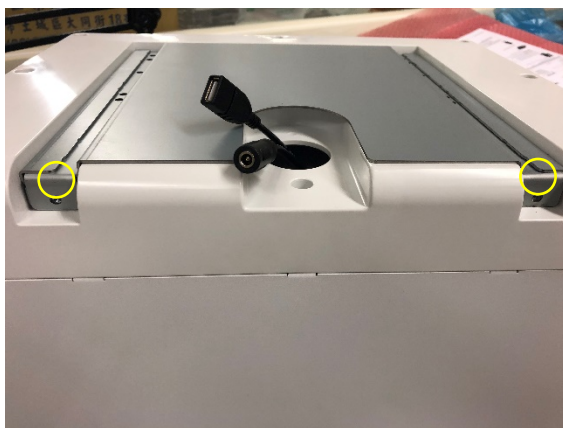


Mounting bracket, put the bracket into the

medication box din rail



slide in and watch the cable routing.



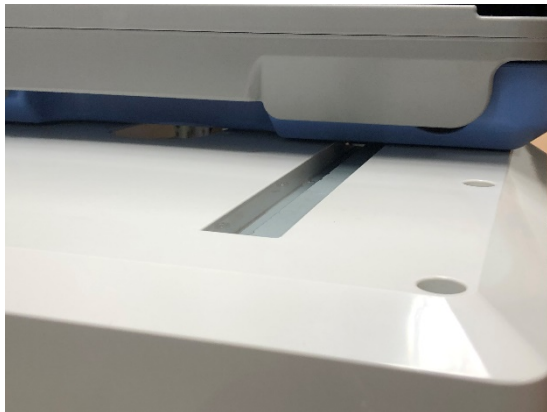
after slide in, screw on these two screw

to fix the bracket.

How to mount medication box on cart.



Screw on bracket on cart.



slide in the medication box.