

20170424_System check_Diple835v2 SN4d015

Frequency: 850 MHz; Duty Cycle: 1:1; Room Ambient Temperature: 24.0°C; Liquid Temperature: 23.5°C

Medium parameters used (interpolated): $f = 850 \text{ MHz}$; $\sigma = 1.002 \text{ S/m}$; $\epsilon_r = 57.098$; $\rho = 1000 \text{ kg/m}^3$

DASY5 Configuration:

- Area Scan Setting - Find Secondary Maximum Within: 2.0 dB and with a peak SAR value greater than 0.0012W/kg
- Electronics: DAE4 Sn877; Calibrated: 2017/3/20
- Probe: EX3DV4 - SN3665; ConvF(9.44, 9.44, 9.44); Calibrated: 2016/5/26;
- Sensor-Surface: 1.4mm (Mechanical Surface Detection)
- Phantom: ELI 4.0; Type: QDOVA001BA; Serial: 1056

Body/Pin=100mW, d=15mm/Area Scan (8x13x1): Measurement grid: dx=15mm, dy=15mm

[Info: Interpolated medium parameters used for SAR evaluation.](#)

Maximum value of SAR (measured) = 1.15 W/kg

Body/Pin=100mW, d=15mm/Zoom Scan (7x7x7)/Cube 0: Measurement grid: dx=5mm, dy=5mm, dz=5mm

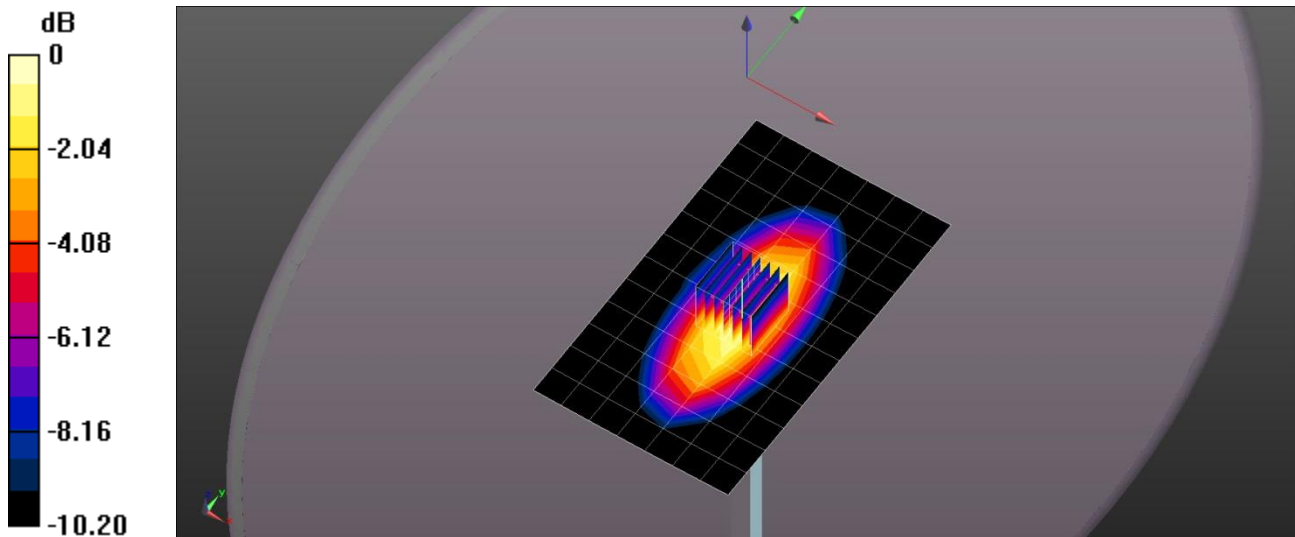
Reference Value = 38.45 V/m; Power Drift = -0.11 dB

Peak SAR (extrapolated) = 1.46 W/kg

SAR(1 g) = 0.949 W/kg; SAR(10 g) = 0.628 W/kg

[Info: Interpolated medium parameters used for SAR evaluation.](#)

Maximum value of SAR (measured) = 1.28 W/kg



0 dB = 1.28 W/kg = 1.07 dBW/kg

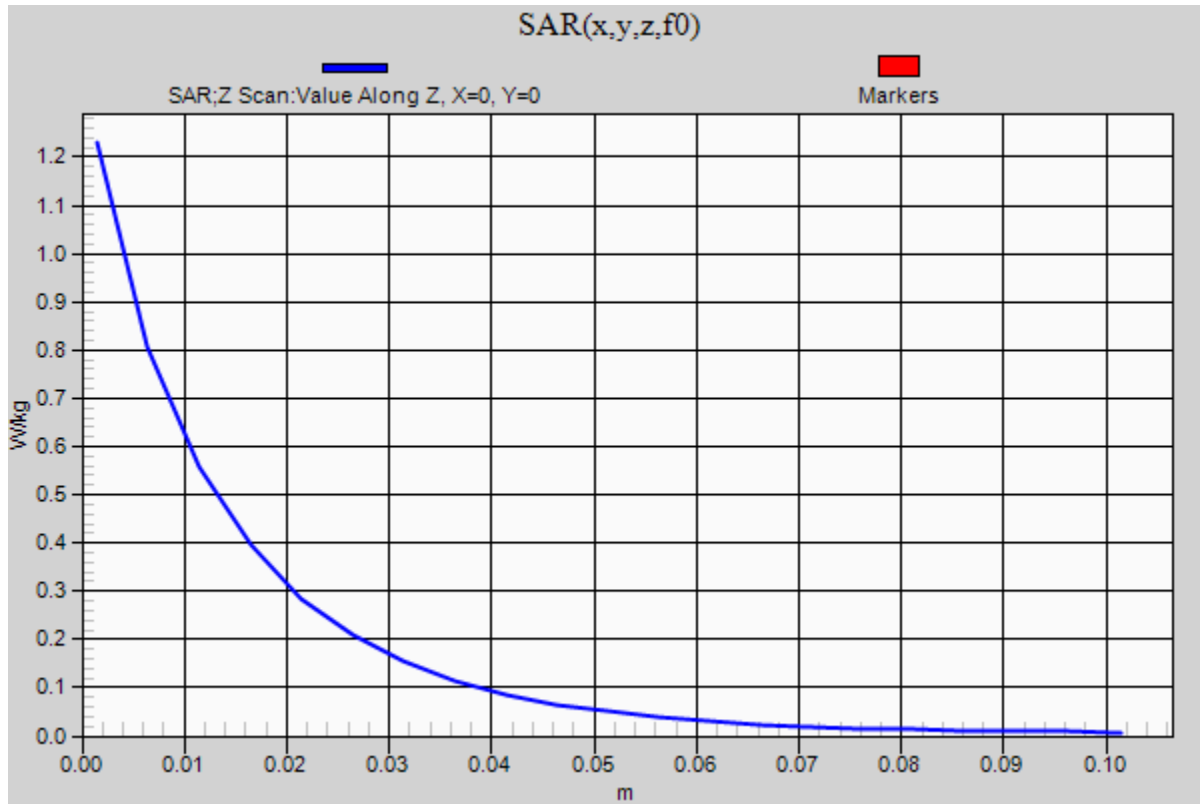
20170424_System check_Diple835v2 SN4d015

Frequency: 850 MHz; Duty Cycle: 1:1

Body/Pin=100mW, d=15mm/Z Scan (1x1x21): Measurement grid: dx=20mm, dy=20mm, dz=5mm

Info: [Interpolated medium parameters used for SAR evaluation.](#)

Maximum value of SAR (measured) = 1.23 W/kg



20170425_System check_Diple835v2 SN4d015

Frequency: 850 MHz; Duty Cycle: 1:1; Room Ambient Temperature: 24.0°C; Liquid Temperature: 23.5°C

Medium parameters used (interpolated): $f = 850 \text{ MHz}$; $\sigma = 1 \text{ S/m}$; $\epsilon_r = 54.934$; $\rho = 1000 \text{ kg/m}^3$

DASY5 Configuration:

- Area Scan Setting - Find Secondary Maximum Within: 2.0 dB and with a peak SAR value greater than 0.0012W/kg
- Electronics: DAE4 Sn877; Calibrated: 2017/3/20
- Probe: EX3DV4 - SN3665; ConvF(9.44, 9.44, 9.44); Calibrated: 2016/5/26;
- Sensor-Surface: 1.4mm (Mechanical Surface Detection)
- Phantom: ELI 4.0; Type: QDOVA001BA; Serial: 1056

Body/Pin=100mW, d=15mm/Area Scan (8x13x1): Measurement grid: dx=15mm, dy=15mm

[Info: Interpolated medium parameters used for SAR evaluation.](#)

Maximum value of SAR (measured) = 1.14 W/kg

Body/Pin=100mW, d=15mm/Zoom Scan (7x7x7)/Cube 0: Measurement grid: dx=5mm, dy=5mm, dz=5mm

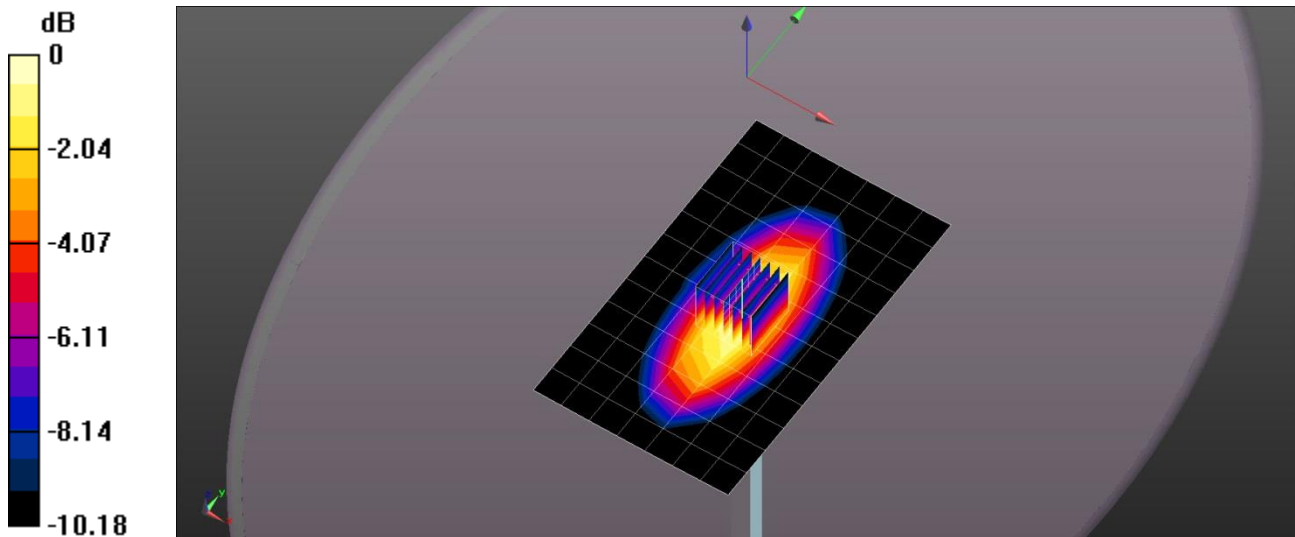
Reference Value = 38.45 V/m; Power Drift = -0.11 dB

Peak SAR (extrapolated) = 1.45 W/kg

SAR(1 g) = 0.947 W/kg; SAR(10 g) = 0.627 W/kg

[Info: Interpolated medium parameters used for SAR evaluation.](#)

Maximum value of SAR (measured) = 1.27 W/kg



0 dB = 1.27 W/kg = 1.04 dBW/kg

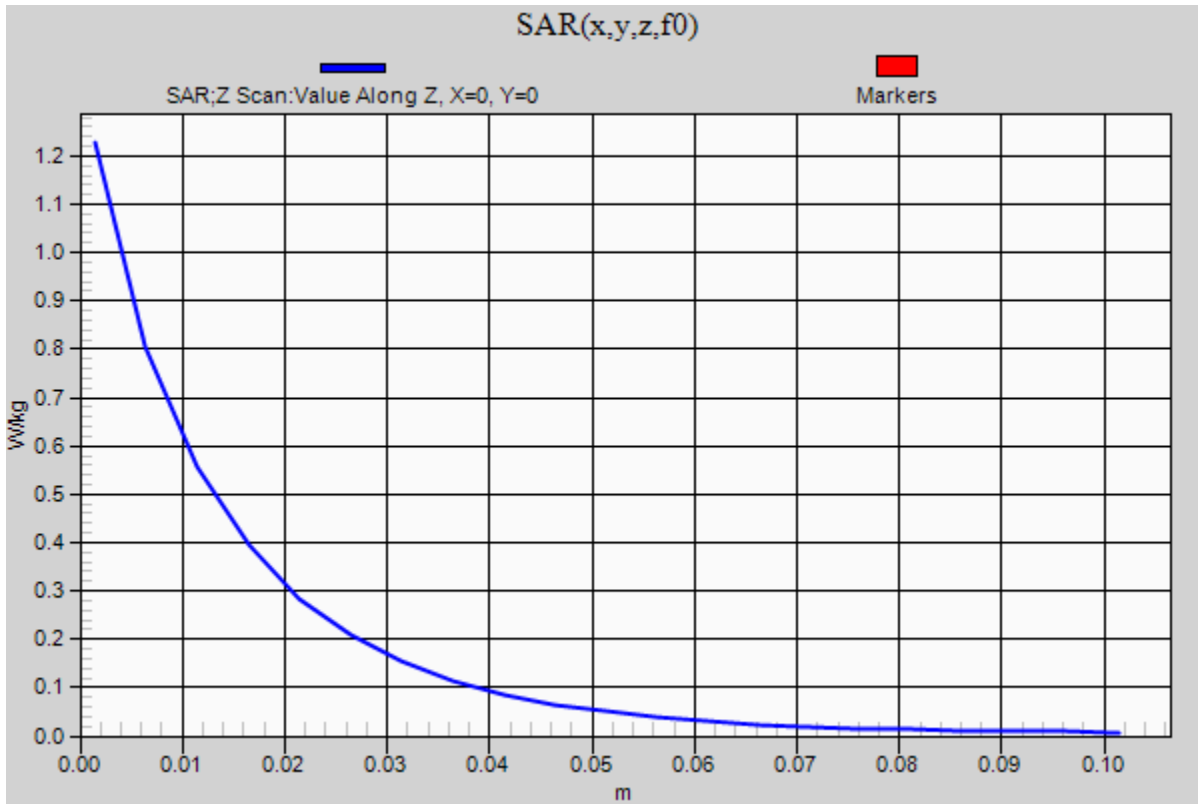
20170425_System check_Diple835v2 SN4d015

Frequency: 850 MHz; Duty Cycle: 1:1

Body/Pin=100mW, d=15mm/Z Scan (1x1x21): Measurement grid: dx=20mm, dy=20mm, dz=5mm

Info: [Interpolated medium parameters used for SAR evaluation.](#)

Maximum value of SAR (measured) = 1.23 W/kg



20170427_System check_Diple750v3 SN1020

Frequency: 750 MHz; Duty Cycle: 1:1; Room Ambient Temperature: 24.0°C; Liquid Temperature: 23.5°C

Medium parameters used (interpolated): $f = 750 \text{ MHz}$; $\sigma = 0.96 \text{ S/m}$; $\epsilon_r = 53.139$; $\rho = 1000 \text{ kg/m}^3$

DASY5 Configuration:

- Area Scan Setting - Find Secondary Maximum Within: 2.0 dB and with a peak SAR value greater than 0.0012W/kg
- Electronics: DAE4 Sn877; Calibrated: 2017/3/20
- Probe: EX3DV4 - SN3665; ConvF(9.49, 9.49, 9.49); Calibrated: 2016/5/26;
- Sensor-Surface: 1.4mm (Mechanical Surface Detection)
- Phantom: ELI 4.0; Type: QDOVA001BA; Serial: 1056

Body/Pin=100mW, d=15mm/Area Scan (7x15x1): Measurement grid: dx=15mm, dy=15mm

[Info: Interpolated medium parameters used for SAR evaluation.](#)

Maximum value of SAR (measured) = 1.27 W/kg

Body/Pin=100mW, d=15mm/Zoom Scan (7x7x7)/Cube 0: Measurement grid: dx=5mm, dy=5mm, dz=5mm

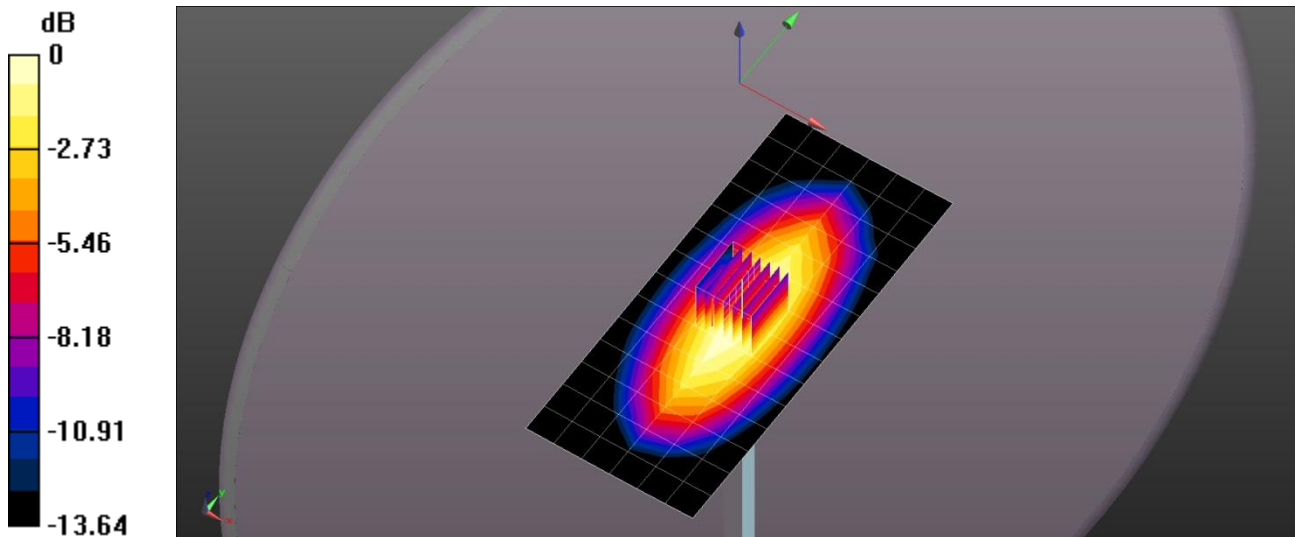
Reference Value = 36.84 V/m; Power Drift = -0.13 dB

Peak SAR (extrapolated) = 1.36 W/kg

SAR(1 g) = 0.880 W/kg; SAR(10 g) = 0.582 W/kg

[Info: Interpolated medium parameters used for SAR evaluation.](#)

Maximum value of SAR (measured) = 1.18 W/kg



0 dB = 1.18 W/kg = 0.72 dBW/kg

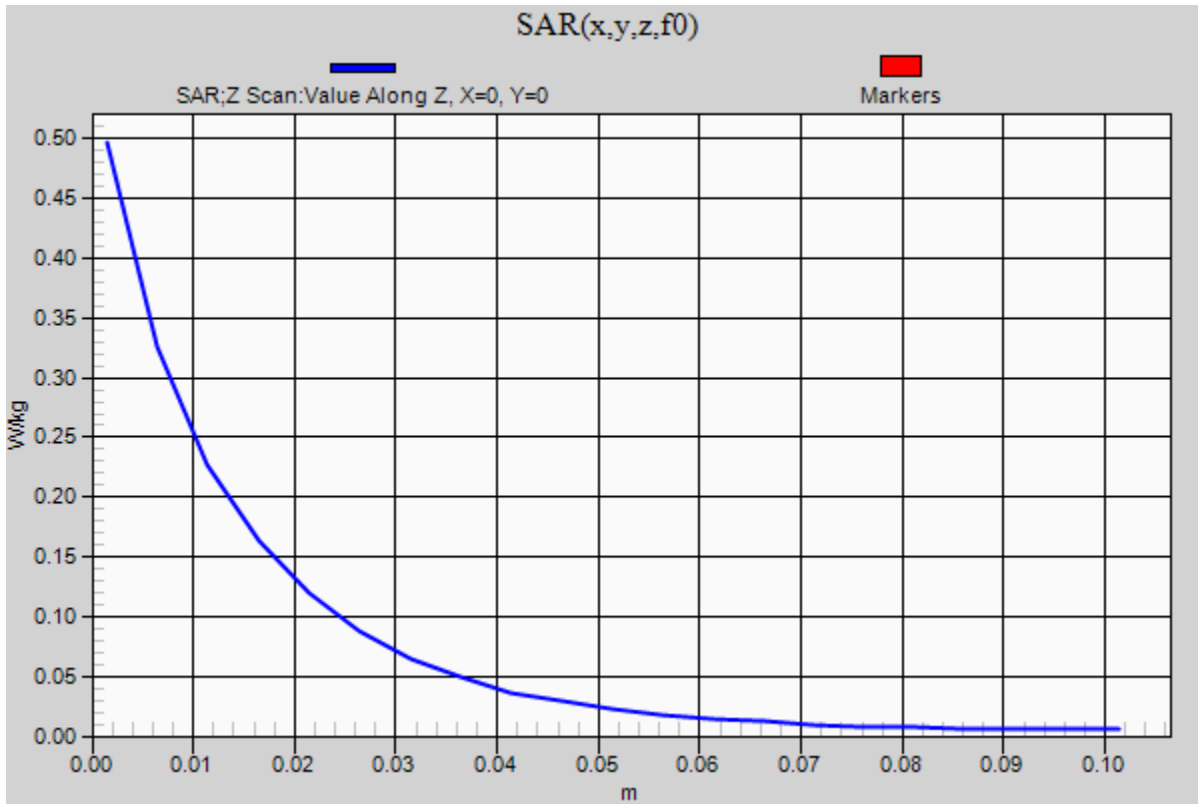
20170427_System check_Diple750v3 SN1020

Frequency: 750 MHz; Duty Cycle: 1:1

Body/Pin=100mW, d=15mm/Z Scan (1x1x21): Measurement grid: dx=20mm, dy=20mm, dz=5mm

Info: [Interpolated medium parameters used for SAR evaluation.](#)

Maximum value of SAR (measured) = 0.497 W/kg



20170428_System check_Diple750v3 SN1020

Frequency: 750 MHz; Duty Cycle: 1:1; Room Ambient Temperature: 24.0°C; Liquid Temperature: 23.5°C

Medium parameters used (interpolated): $f = 750$ MHz; $\sigma = 0.954$ S/m; $\epsilon_r = 56.81$; $\rho = 1000$ kg/m³

DASY5 Configuration:

- Area Scan Setting - Find Secondary Maximum Within: 2.0 dB and with a peak SAR value greater than 0.0012W/kg
- Electronics: DAE4 Sn877; Calibrated: 2017/3/20
- Probe: EX3DV4 - SN3665; ConvF(9.49, 9.49, 9.49); Calibrated: 2016/5/26;
- Sensor-Surface: 1.4mm (Mechanical Surface Detection)
- Phantom: ELI 4.0; Type: QDOVA001BA; Serial: 1056

Body/Pin=100mW, d=15mm/Area Scan (7x15x1): Measurement grid: dx=15mm, dy=15mm

[Info: Interpolated medium parameters used for SAR evaluation.](#)

Maximum value of SAR (measured) = 1.26 W/kg

Body/Pin=100mW, d=15mm/Zoom Scan (7x7x7)/Cube 0: Measurement grid: dx=5mm, dy=5mm, dz=5mm

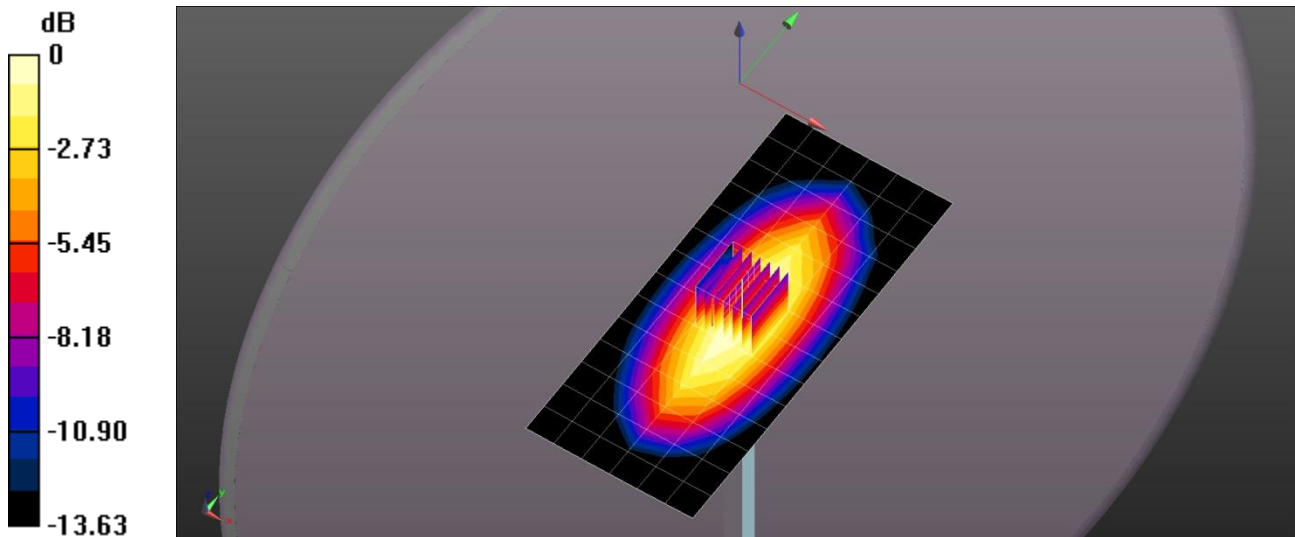
Reference Value = 36.84 V/m; Power Drift = -0.11 dB

Peak SAR (extrapolated) = 1.35 W/kg

SAR(1 g) = 0.874 W/kg; SAR(10 g) = 0.578 W/kg

[Info: Interpolated medium parameters used for SAR evaluation.](#)

Maximum value of SAR (measured) = 1.17 W/kg



0 dB = 1.17 W/kg = 0.68 dBW/kg

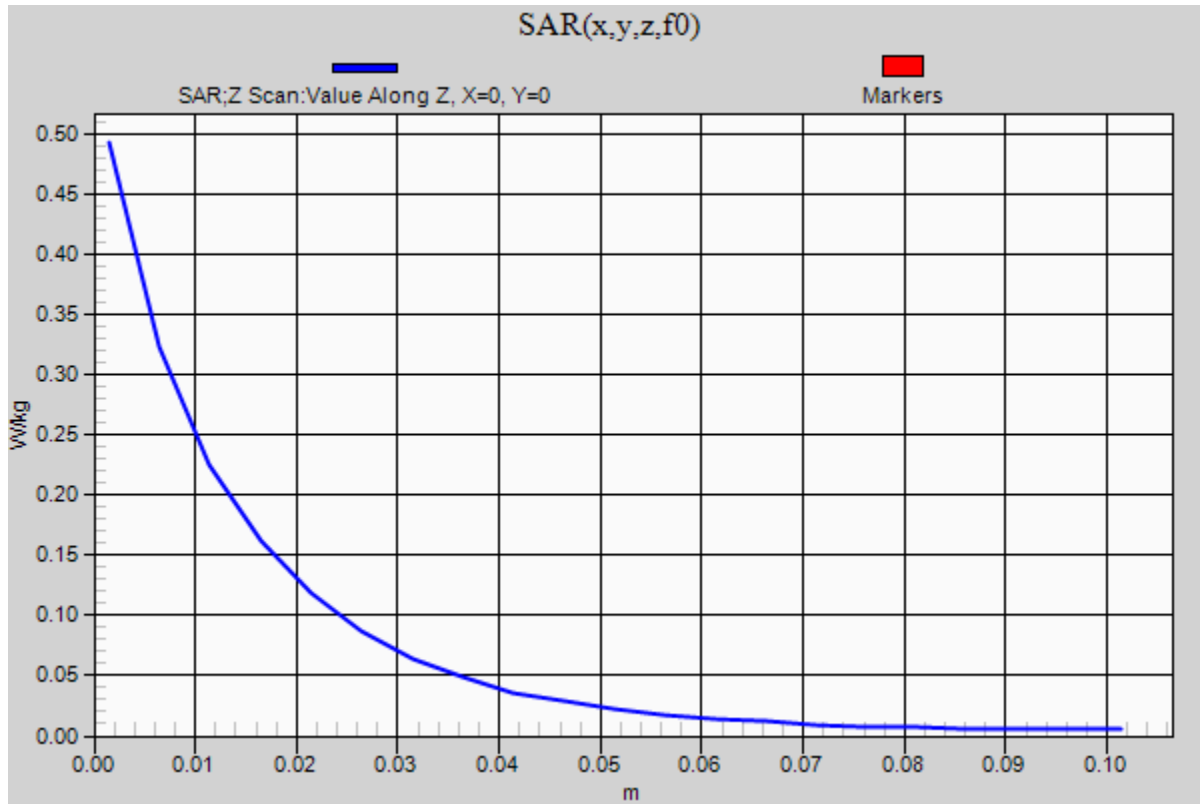
20170428_System check_Diple750v3 SN1020

Frequency: 750 MHz; Duty Cycle: 1:1

Body/Pin=100mW, d=15mm/Z Scan (1x1x21): Measurement grid: dx=20mm, dy=20mm, dz=5mm

Info: [Interpolated medium parameters used for SAR evaluation.](#)

Maximum value of SAR (measured) = 0.494 W/kg



20170502_System check_Diple2450v2 SN728

Frequency: 2450 MHz; Duty Cycle: 1:1; Room Ambient Temperature: 24.0°C; Liquid Temperature: 23.5°C

Medium parameters used (interpolated): $f = 2450$ MHz; $\sigma = 1.916$ S/m; $\epsilon_r = 51.08$; $\rho = 1000$ kg/m³

DASY5 Configuration:

- Area Scan Setting - Find Secondary Maximum Within: 2.0 dB and with a peak SAR value greater than 0.0012W/kg
- Electronics: DAE4 Sn877; Calibrated: 2017/3/20
- Probe: EX3DV4 - SN3665; ConvF(7.32, 7.32, 7.32); Calibrated: 2016/5/26;
- Sensor-Surface: 1.4mm (Mechanical Surface Detection)
- Phantom: ELI 4.0; Type: QDOVA001BA; Serial: 1056

Body/Pin=100mW, d=10mm/Area Scan (7x9x1): Measurement grid: dx=12mm, dy=12mm

[Info: Interpolated medium parameters used for SAR evaluation.](#)

Maximum value of SAR (measured) = 7.17 W/kg

Body/Pin=100mW, d=10mm/Zoom Scan (7x7x7)/Cube 0: Measurement grid: dx=5mm, dy=5mm, dz=5mm

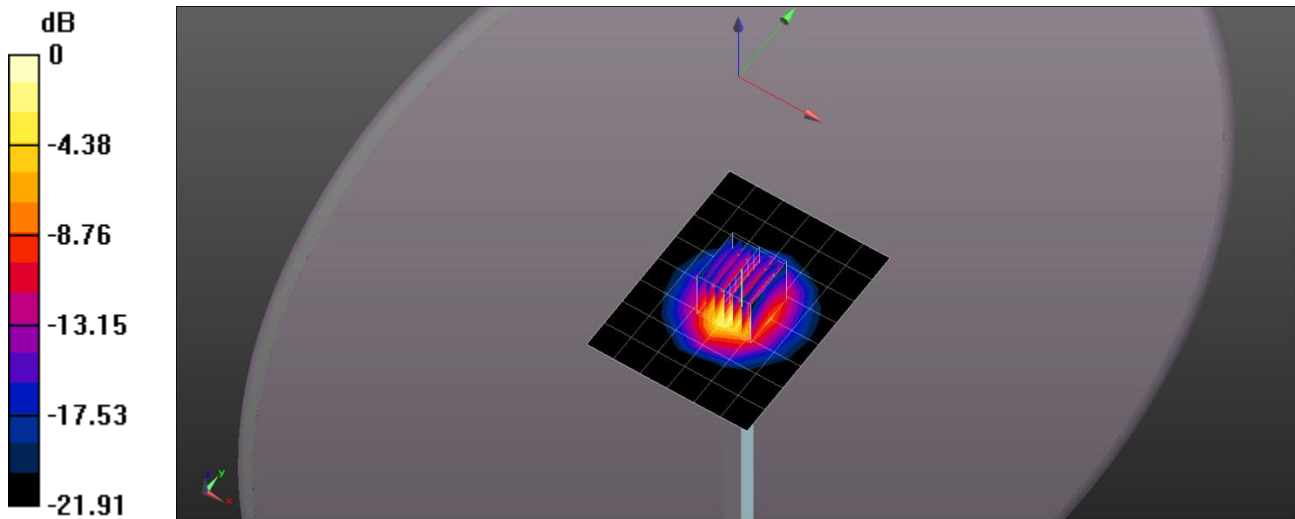
Reference Value = 64.08 V/m; Power Drift = 0.13 dB

Peak SAR (extrapolated) = 10.1 W/kg

SAR(1 g) = 4.97 W/kg; SAR(10 g) = 2.32 W/kg

[Info: Interpolated medium parameters used for SAR evaluation.](#)

Maximum value of SAR (measured) = 8.18 W/kg



0 dB = 8.18 W/kg = 9.13 dBW/kg

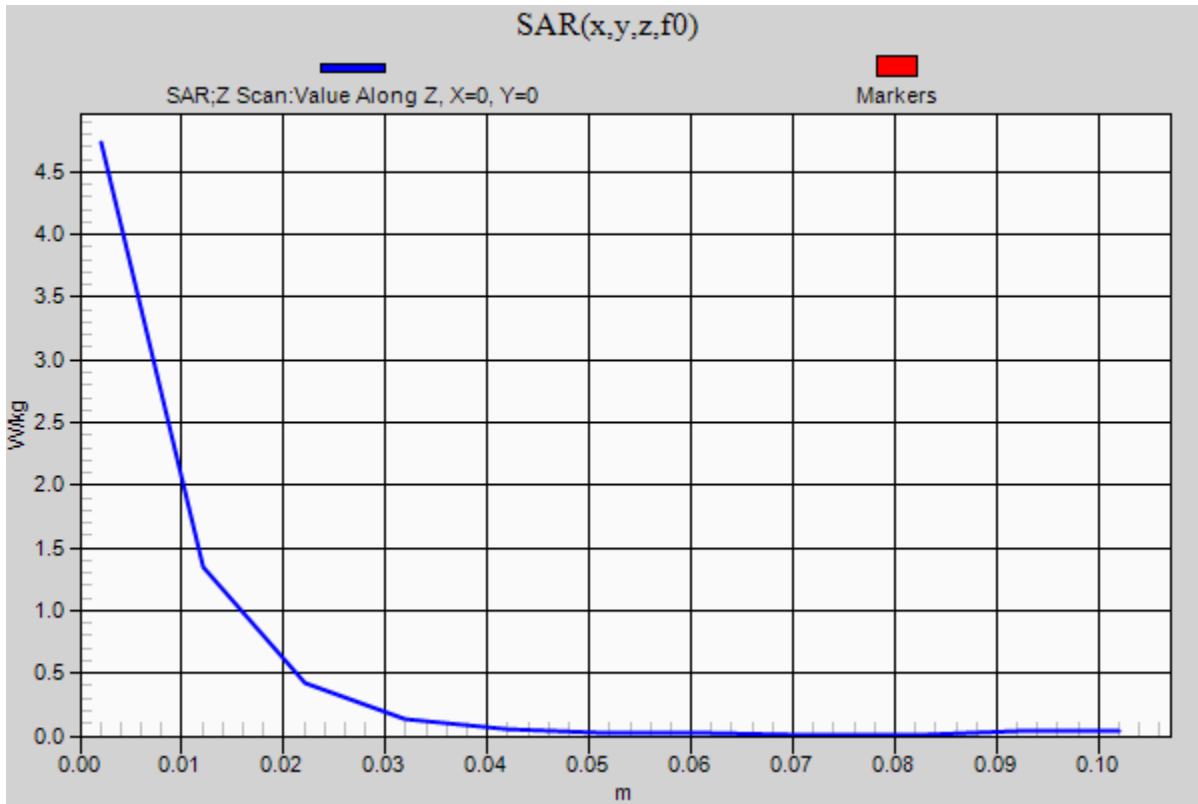
20170502_System check_Diple2450v2 SN728

Frequency: 2450 MHz; Duty Cycle: 1:1

Body/Pin=100mW, d=10mm/Z Scan (1x1x11): Measurement grid: dx=20mm, dy=20mm, dz=10mm

Info: [Interpolated medium parameters used for SAR evaluation.](#)

Maximum value of SAR (measured) = 4.73 W/kg



20170503_System check_Diple5GHzv2 SN1004

Frequency: 5300 MHz; Duty Cycle: 1:1; Room Ambient Temperature: 24.0°C; Liquid Temperature: 23.5°C

Medium parameters used: $f = 5300.2 \text{ MHz}$; $\sigma = 5.413 \text{ S/m}$; $\epsilon_r = 48.224$; $\rho = 1000 \text{ kg/m}^3$

DASY5 Configuration:

- Area Scan Setting - Find Secondary Maximum Within: 2.0 dB and with a peak SAR value greater than 0.0012W/kg
- Electronics: DAE4 Sn877; Calibrated: 2017/3/20
- Probe: EX3DV4 - SN3665; ConvF(4.27, 4.27, 4.27); Calibrated: 2016/5/26;
- Sensor-Surface: 1.4mm (Mechanical Surface Detection)
- Phantom: ELI 4.0; Type: QDOVA001BA; Serial: 1056

Body/5300MHz,Pin=100mW,d=10mm/Area Scan (7x7x1): Measurement grid: dx=10mm, dy=10mm

Maximum value of SAR (measured) = 20.5 W/kg

Body/5300MHz,Pin=100mW,d=10mm/Zoom Scan (7x7x6)/Cube 0: Measurement grid: dx=4mm,

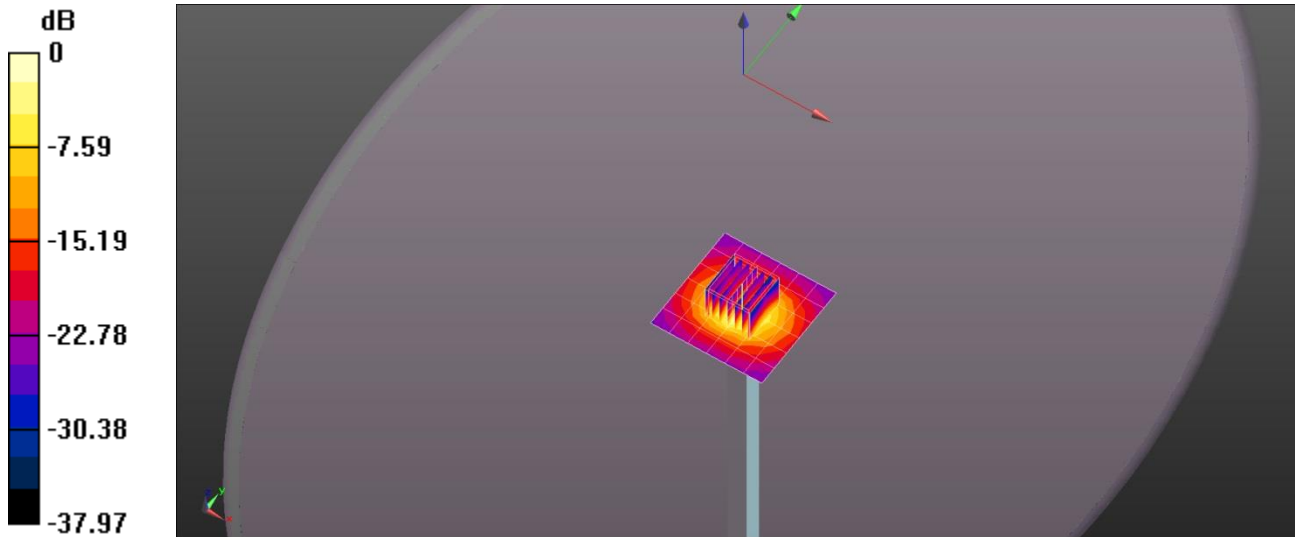
dy=4mm, dz=1.4mm

Reference Value = 43.69 V/m; Power Drift = -0.12 dB

Peak SAR (extrapolated) = 31.0 W/kg

SAR(1 g) = 7.86 W/kg; SAR(10 g) = 2.23 W/kg

Maximum value of SAR (measured) = 20.0 W/kg



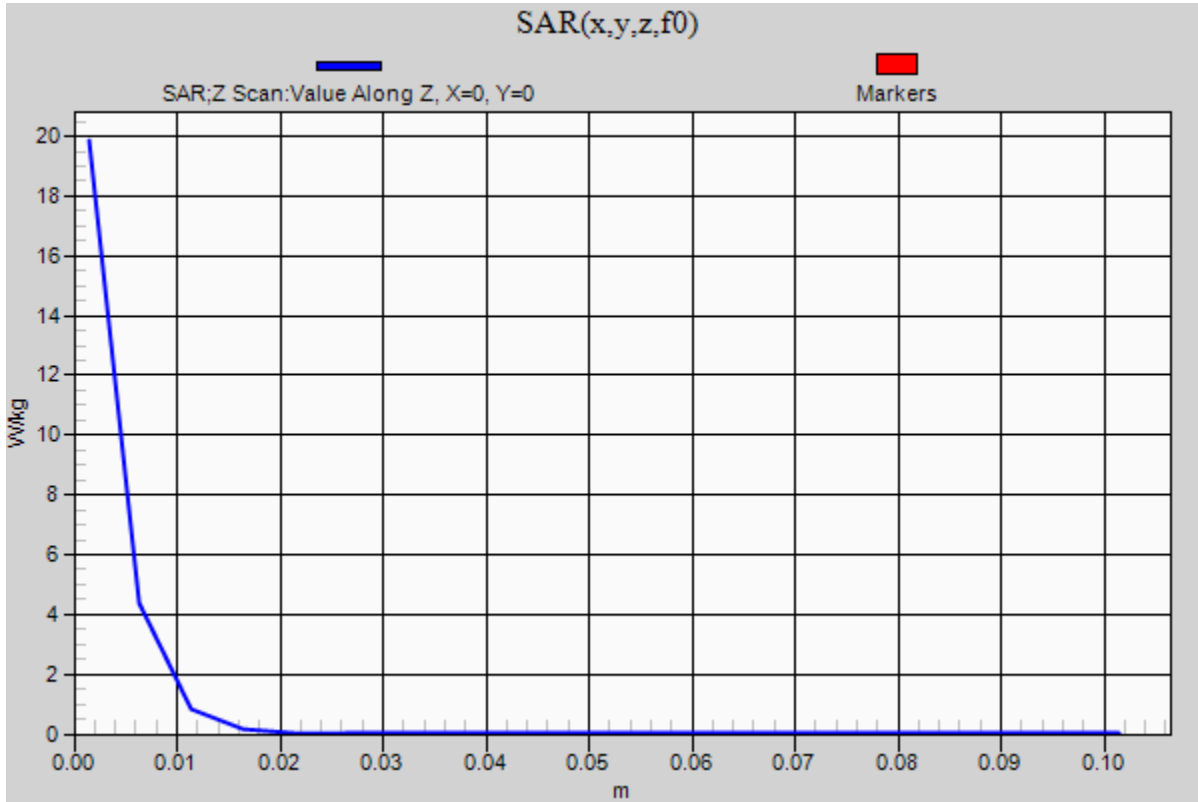
0 dB = 20.0 W/kg = 13.01 dBW/kg

20170503_System check_Diple5GHzv2 SN1004

Frequency: 5300 MHz; Duty Cycle: 1:1

Body/5300MHz,Pin=100mW,d=10mm/Z Scan (1x1x21): Measurement grid: dx=20mm, dy=20mm, dz=5mm

Maximum value of SAR (measured) = 19.9 W/kg



20170503_System check_Diple5GHzv2 SN1004

Frequency: 5600 MHz; Duty Cycle: 1:1; Room Ambient Temperature: 24.0°C; Liquid Temperature: 23.5°C

Medium parameters used: $f = 5600.5$ MHz; $\sigma = 5.81$ S/m; $\epsilon_r = 47.638$; $\rho = 1000$ kg/m³

DASY5 Configuration:

- Area Scan Setting - Find Secondary Maximum Within: 2.0 dB and with a peak SAR value greater than 0.0012W/kg
- Electronics: DAE4 Sn877; Calibrated: 2017/3/20
- Probe: EX3DV4 - SN3665; ConvF(3.63, 3.63, 3.63); Calibrated: 2016/5/26;
- Sensor-Surface: 1.4mm (Mechanical Surface Detection)
- Phantom: ELI 4.0; Type: QDOVA001BA; Serial: 1056

Body/5600MHz,Pin=100mW,d=10mm/Area Scan (7x7x1): Measurement grid: dx=10mm, dy=10mm

Maximum value of SAR (measured) = 19.7 W/kg

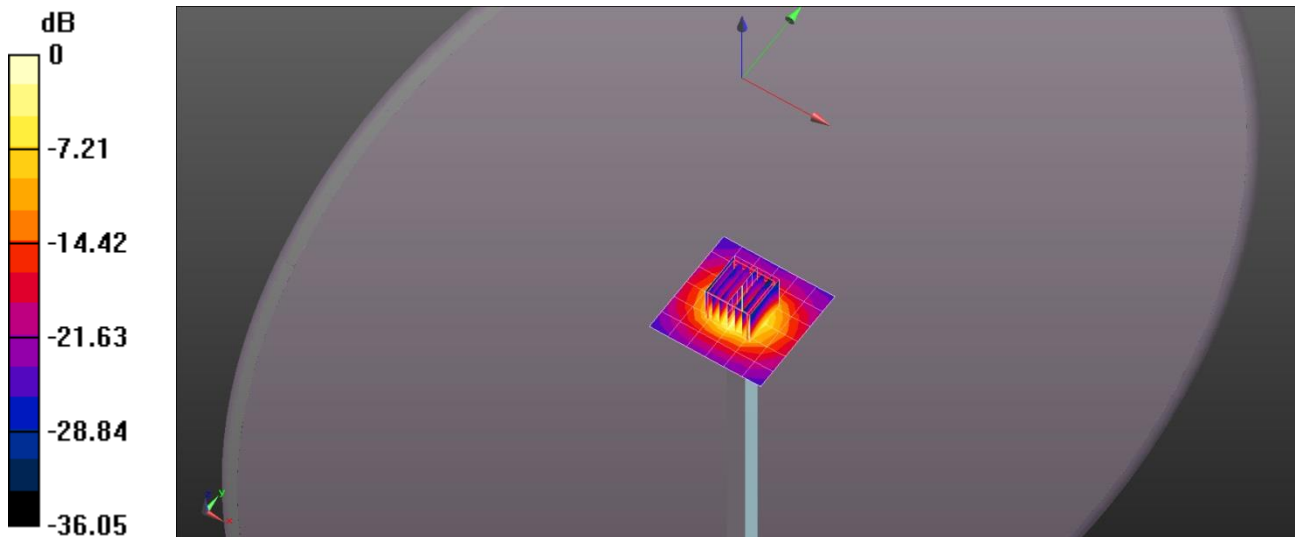
Body/5600MHz,Pin=100mW,d=10mm/Zoom Scan (7x7x6)/Cube 0: Measurement grid: dx=4mm,

dy=4mm, dz=1.4mm

Reference Value = 40.83 V/m; Power Drift = -0.07 dB

Peak SAR (extrapolated) = 30.0 W/kg

SAR(1 g) = 7.66 W/kg; SAR(10 g) = 2.17 W/kg



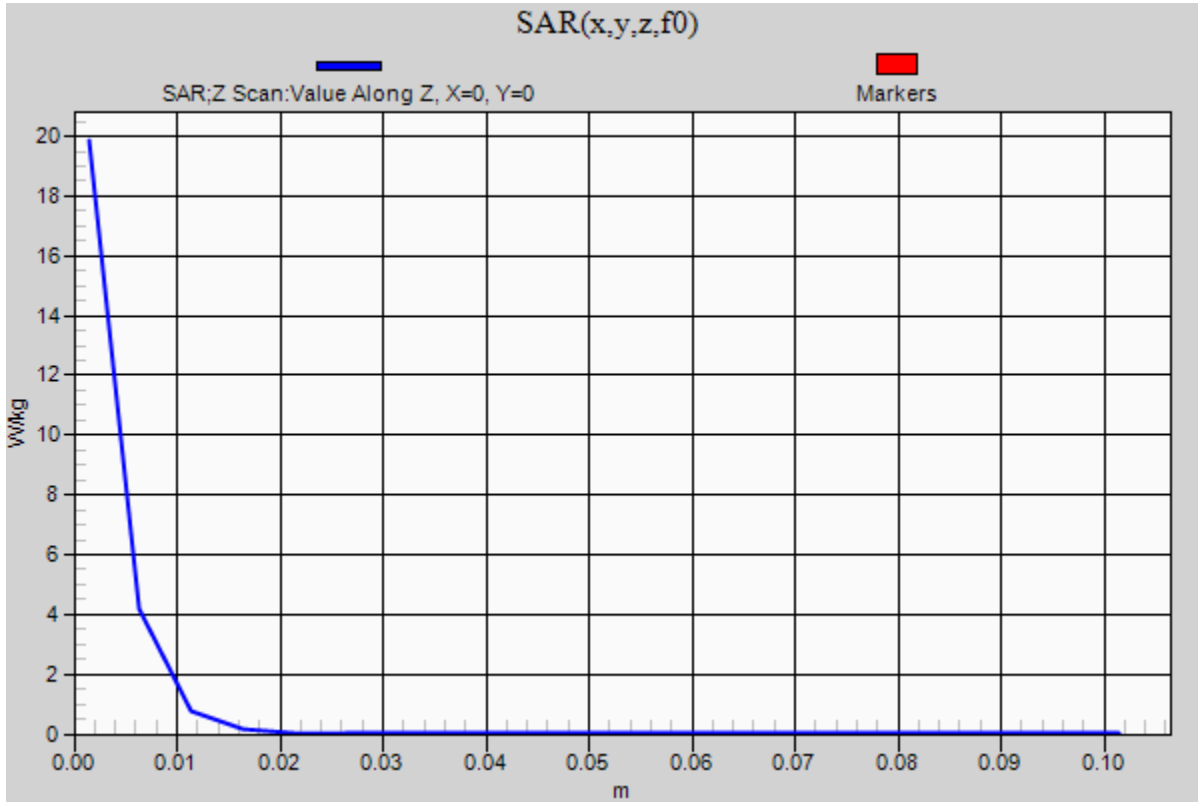
0 dB = 19.7 W/kg = 12.94 dBW/kg

20170503_System check_Diple5GHzv2 SN1004

Frequency: 5600 MHz; Duty Cycle: 1:1

Body/5600MHz,Pin=100mW,d=10mm/Z Scan (1x1x21): Measurement grid: dx=20mm, dy=20mm, dz=5mm

Maximum value of SAR (measured) = 19.8 W/kg



20170503_System check_Diple5GHzv2 SN1004

Frequency: 5800 MHz; Duty Cycle: 1:1; Room Ambient Temperature: 24.0°C; Liquid Temperature: 23.5°C

Medium parameters used (interpolated): $f = 5800$ MHz; $\sigma = 6.046$ S/m; $\epsilon_r = 47.266$; $\rho = 1000$ kg/m³

DASY5 Configuration:

- Area Scan Setting - Find Secondary Maximum Within: 2.0 dB and with a peak SAR value greater than 0.0012W/kg
- Electronics: DAE4 Sn877; Calibrated: 2017/3/20
- Probe: EX3DV4 - SN3665; ConvF(3.95, 3.95, 3.95); Calibrated: 2016/5/26;
- Sensor-Surface: 1.4mm (Mechanical Surface Detection)
- Phantom: ELI 4.0; Type: QDOVA001BA; Serial: 1056

Body/5800MHz,Pin=100mW,d=10mm/Area Scan (7x7x1): Measurement grid: dx=10mm, dy=10mm

[Info: Interpolated medium parameters used for SAR evaluation.](#)

Maximum value of SAR (measured) = 19.6 W/kg

Body/5800MHz,Pin=100mW,d=10mm/Zoom Scan (7x7x6)/Cube 0: Measurement grid: dx=4mm, dy=4mm, dz=1.4mm

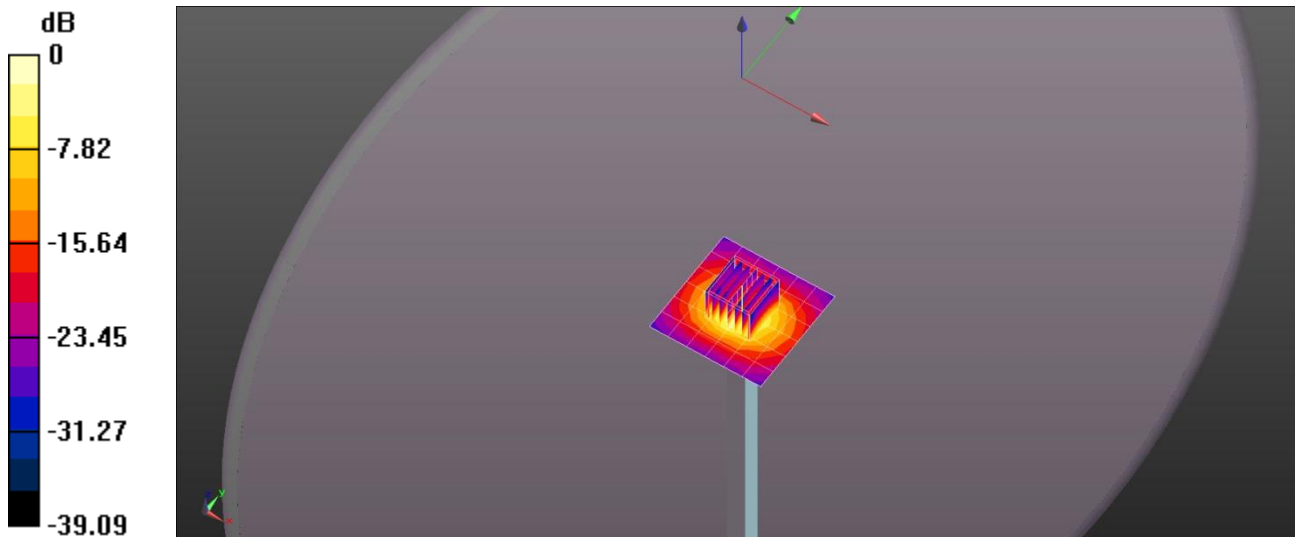
Reference Value = 37.01 V/m; Power Drift = 0.14 dB

Peak SAR (extrapolated) = 31.1 W/kg

SAR(1 g) = 7.53 W/kg; SAR(10 g) = 2.14 W/kg

[Info: Interpolated medium parameters used for SAR evaluation.](#)

Maximum value of SAR (measured) = 19.7 W/kg



0 dB = 19.7 W/kg = 12.94 dBW/kg

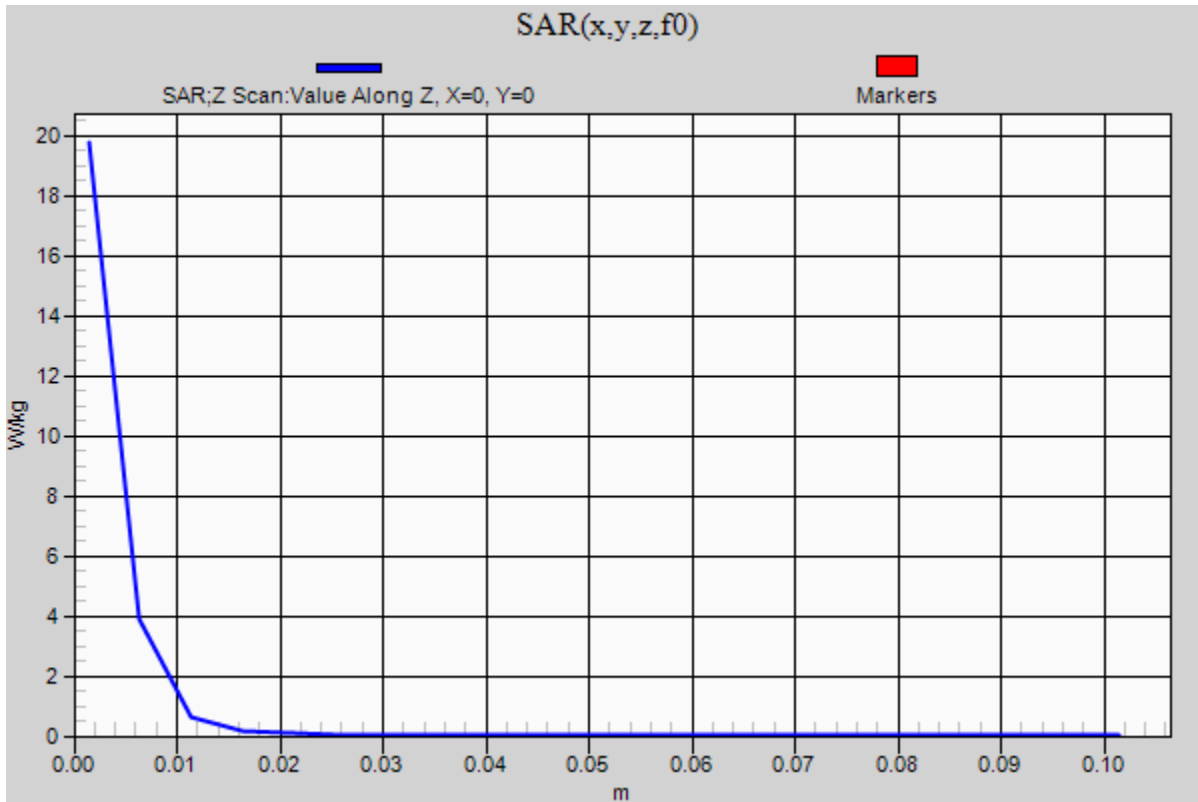
20170503_System check_Diple5GHzv2 SN1004

Frequency: 5800 MHz; Duty Cycle: 1:1

Body/5800MHz,Pin=100mW,d=10mm/Z Scan (1x1x21): Measurement grid: dx=20mm, dy=20mm, dz=5mm

Info: [Interpolated medium parameters used for SAR evaluation.](#)

Maximum value of SAR (measured) = 19.8 W/kg



20170504_System Check_Diple1900v2 SN5d056

Frequency: 1900 MHz; Duty Cycle: 1:1; Room Ambient Temperature: 24.0°C; Liquid Temperature: 23.5°C

Medium parameters used (interpolated): $f = 1900$ MHz; $\sigma = 1.55$ S/m; $\epsilon_r = 50.988$; $\rho = 1000$ kg/m³

DASY5 Configuration:

- Area Scan Setting - Find Secondary Maximum Within: 2.0 dB and with a peak SAR value greater than 0.0012W/kg
- Electronics: DAE4 Sn877; Calibrated: 2017/3/20
- Probe: EX3DV4 - SN3665; ConvF(7.66, 7.66, 7.66); Calibrated: 2016/5/26;
- Sensor-Surface: 1.4mm (Mechanical Surface Detection)
- Phantom: ELI 4.0; Type: QDOVA001BA; Serial: 1056

Body/Pin=100mW, d=10mm/Area Scan (7x9x1): Measurement grid: dx=15mm, dy=15mm

[Info: Interpolated medium parameters used for SAR evaluation.](#)

Maximum value of SAR (measured) = 5.74 W/kg

Body/Pin=100mW, d=10mm/Zoom Scan (7x7x7)/Cube 0: Measurement grid: dx=5mm, dy=5mm, dz=5mm

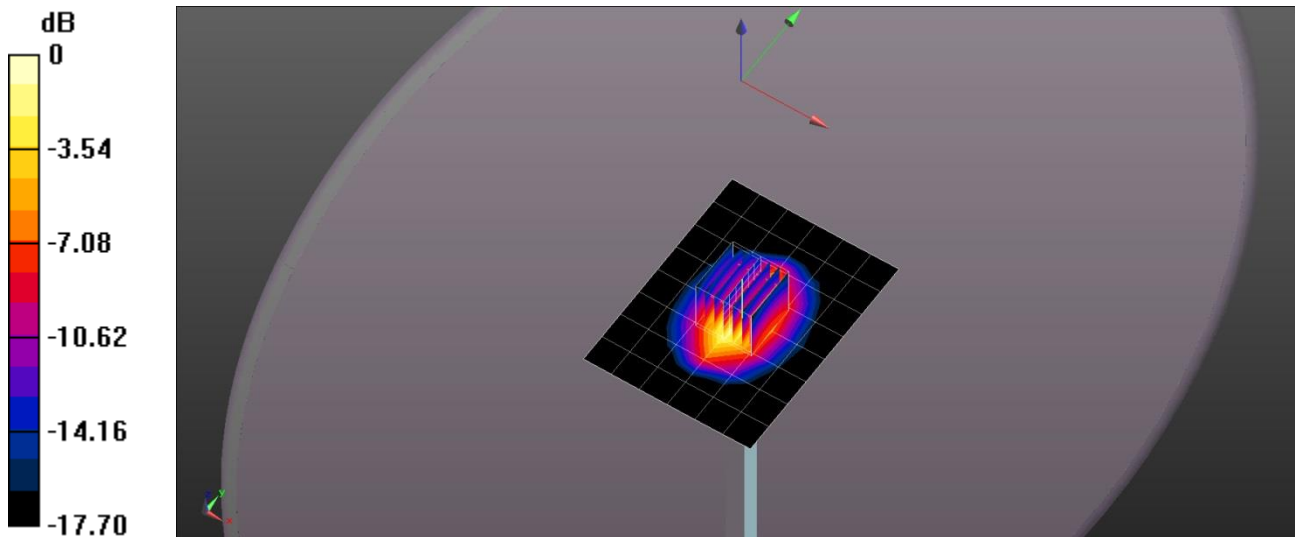
Reference Value = 78.92 V/m; Power Drift = -0.16 dB

Peak SAR (extrapolated) = 7.44 W/kg

SAR(1 g) = 3.97 W/kg; SAR(10 g) = 2.04 W/kg

[Info: Interpolated medium parameters used for SAR evaluation.](#)

Maximum value of SAR (measured) = 6.19 W/kg



0 dB = 6.19 W/kg = 7.92 dBW/kg

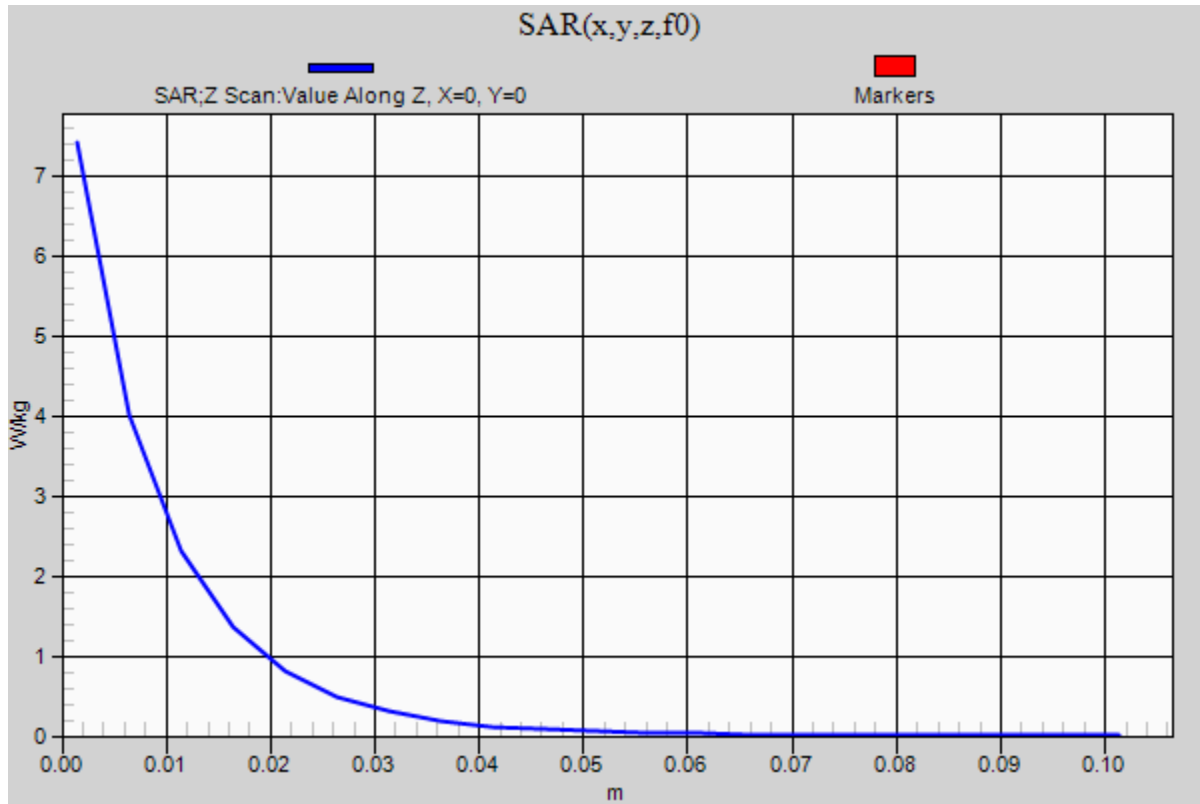
20170504_System Check_Diple1900v2 SN5d056

Frequency: 1900 MHz; Duty Cycle: 1:1

Body/Pin=100mW, d=10mm/Z Scan (1x1x21): Measurement grid: dx=20mm, dy=20mm, dz=5mm

Info: [Interpolated medium parameters used for SAR evaluation.](#)

Maximum value of SAR (measured) = 7.41 W/kg



20170505_System Check_Diple1900v2 SN5d056

Frequency: 1900 MHz; Duty Cycle: 1:1; Room Ambient Temperature: 24.0°C; Liquid Temperature: 23.5°C

Medium parameters used (interpolated): $f = 1900$ MHz; $\sigma = 1.538$ S/m; $\epsilon_r = 54.227$; $\rho = 1000$ kg/m³

DASY5 Configuration:

- Area Scan Setting - Find Secondary Maximum Within: 2.0 dB and with a peak SAR value greater than 0.0012W/kg
- Electronics: DAE4 Sn877; Calibrated: 2017/3/20
- Probe: EX3DV4 - SN3665; ConvF(7.66, 7.66, 7.66); Calibrated: 2016/5/26;
- Sensor-Surface: 1.4mm (Mechanical Surface Detection)
- Phantom: ELI 4.0; Type: QDOVA001BA; Serial: 1056

Body/Pin=100mW, d=10mm/Area Scan (7x9x1): Measurement grid: dx=15mm, dy=15mm

[Info: Interpolated medium parameters used for SAR evaluation.](#)

Maximum value of SAR (measured) = 5.99 W/kg

Body/Pin=100mW, d=10mm/Zoom Scan (7x7x7)/Cube 0: Measurement grid: dx=5mm, dy=5mm, dz=5mm

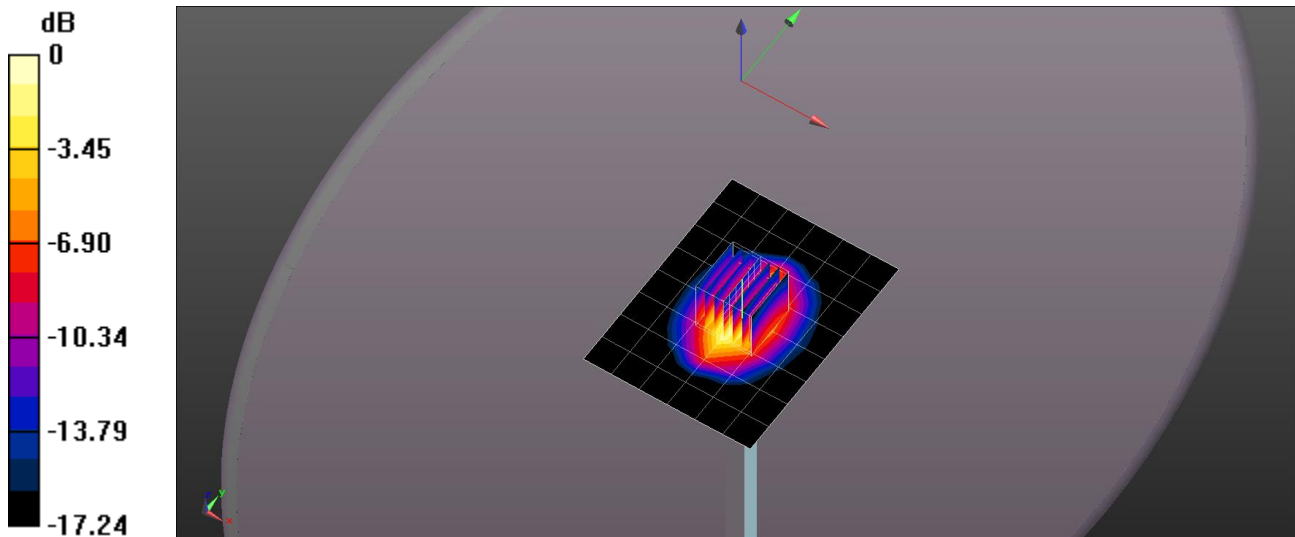
Reference Value = 73.36 V/m; Power Drift = -0.04 dB

Peak SAR (extrapolated) = 7.28 W/kg

SAR(1 g) = 3.96 W/kg; SAR(10 g) = 2.1 W/kg

[Info: Interpolated medium parameters used for SAR evaluation.](#)

Maximum value of SAR (measured) = 6.05 W/kg



0 dB = 6.05 W/kg = 7.82 dBW/kg

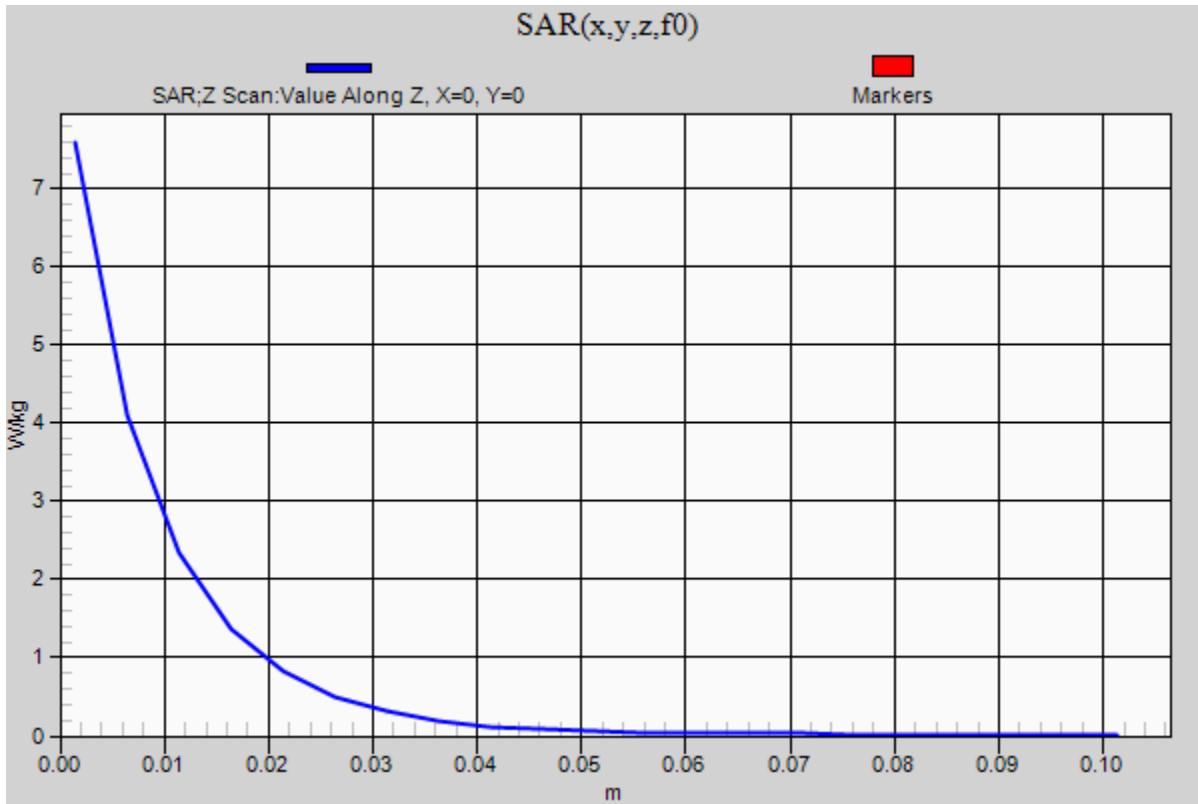
20170505_System Check_Diple1900v2 SN5d056

Frequency: 1900 MHz; Duty Cycle: 1:1

Body/Pin=100mW, d=10mm/Z Scan (1x1x21): Measurement grid: dx=20mm, dy=20mm, dz=5mm

Info: [Interpolated medium parameters used for SAR evaluation.](#)

Maximum value of SAR (measured) = 7.59 W/kg



20170508_System Check_Diple1750v2 SN1158

Frequency: 1760 MHz; Duty Cycle: 1:1; Room Ambient Temperature: 24.0°C; Liquid Temperature: 23.5°C

Medium parameters used (interpolated): $f = 1760$ MHz; $\sigma = 1.538$ S/m; $\epsilon_r = 51.074$; $\rho = 1000$ kg/m³

DASY5 Configuration:

- Area Scan Setting - Find Secondary Maximum Within: 2.0 dB and with a peak SAR value greater than 0.0012W/kg
- Electronics: DAE4 Sn877; Calibrated: 2017/3/20
- Probe: EX3DV4 - SN3665; ConvF(8, 8, 8); Calibrated: 2016/5/26;
- Sensor-Surface: 1.4mm (Mechanical Surface Detection)
- Phantom: ELI 4.0; Type: QDOVA001BA; Serial: 1056

Body/Pin=100mW, d=10mm/Area Scan (7x9x1): Measurement grid: dx=15mm, dy=15mm

[Info: Interpolated medium parameters used for SAR evaluation.](#)

Maximum value of SAR (measured) = 6.07 W/kg

Body/Pin=100mW, d=10mm/Zoom Scan (7x7x7)/Cube 0: Measurement grid: dx=5mm, dy=5mm, dz=5mm

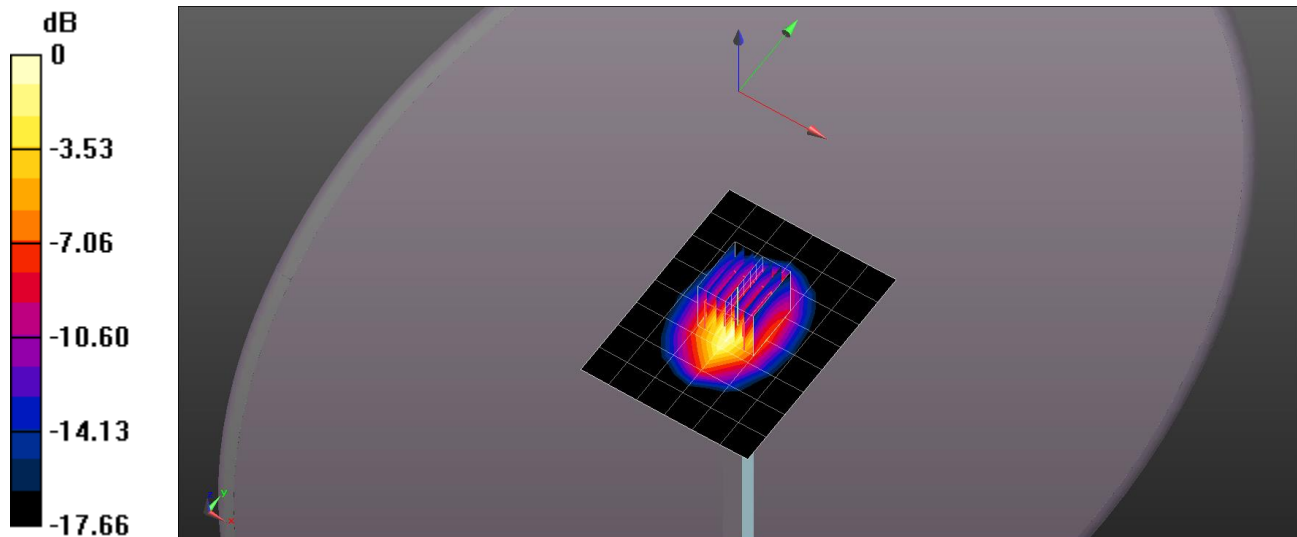
Reference Value = 64.86 V/m; Power Drift = -0.11 dB

Peak SAR (extrapolated) = 6.94 W/kg

SAR(1 g) = 3.75 W/kg; SAR(10 g) = 1.97 W/kg

[Info: Interpolated medium parameters used for SAR evaluation.](#)

Maximum value of SAR (measured) = 5.80 W/kg



0 dB = 5.80 W/kg = 7.63 dBW/kg

20170508_System Check_Diple1750v2 SN1158

Frequency: 1760 MHz; Duty Cycle: 1:1

Body/Pin=100mW, d=10mm/Z Scan (1x1x21): Measurement grid: dx=20mm, dy=20mm, dz=5mm

Info: [Interpolated medium parameters used for SAR evaluation.](#)

Maximum value of SAR (measured) = 5.81 W/kg

