

System Performance Check-D2450V2

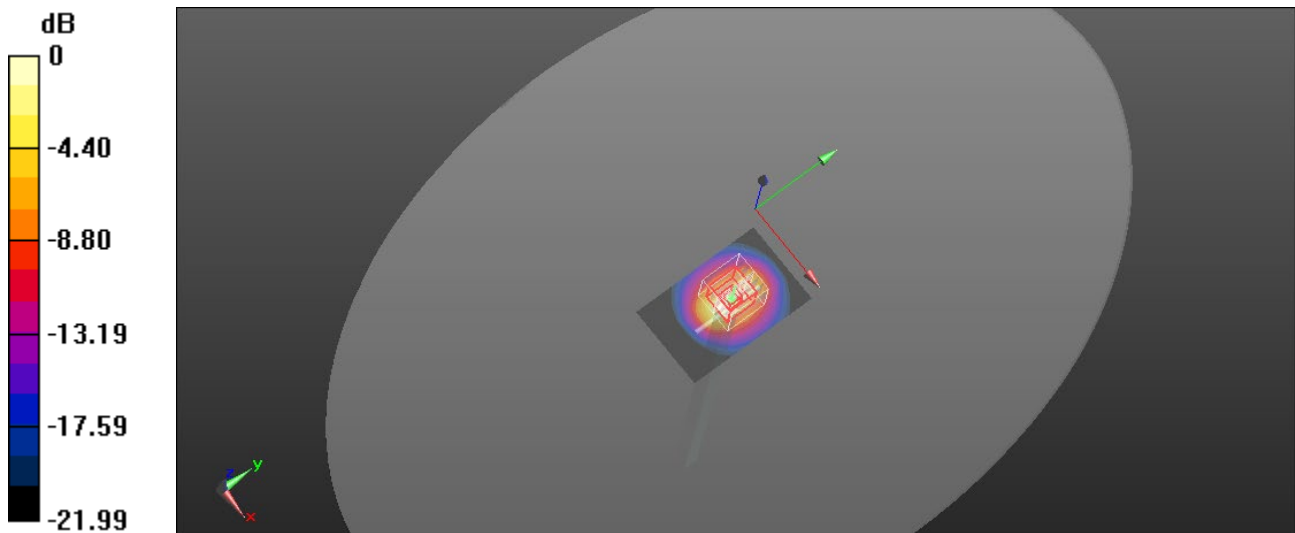
Frequency: 2450 MHz; Duty Cycle: 1:1; Room Ambient Temperature: 23.2°C; Liquid Temperature: 23.0°C
Medium parameters used: $f = 2450$ MHz; $\sigma = 1.828$ S/m; $\epsilon_r = 39$; $\rho = 1000$ kg/m³

DASY5 Configuration:

- Area Scan Setting: Find Secondary Maximum Within: 2.0 dB and with a peak SAR value greater than 0.0012W/kg
- Electronics: DAE4 Sn558; Calibrated: 2020/11/24
- Probe: EX3DV4 - SN3665; ConvF(7.35, 7.35, 7.35) @ 2450 MHz; Calibrated: 2020/8/20
- Sensor-Surface: 2mm (Mechanical Surface Detection)
- Phantom: ELI

Head/Pin=250mW/Area Scan (51x81x1): Interpolated grid: dx=1.200 mm, dy=1.200 mm
Maximum value of SAR (interpolated) = 22.1 W/kg

Head/Pin=250mW/Zoom Scan (7x7x7)/Cube 0: Measurement grid: dx=5mm, dy=5mm, dz=5mm
Reference Value = 107.7 V/m; Power Drift = -0.02 dB
Peak SAR (extrapolated) = 28.2 W/kg
SAR(1 g) = 13.5 W/kg; SAR(10 g) = 6.29 W/kg
Smallest distance from peaks to all points 3 dB below = 9 mm
Ratio of SAR at M2 to SAR at M1 = 48.7%
Maximum value of SAR (measured) = 20.8 W/kg



0 dB = 20.8 W/kg = 13.18 dBW/kg

System Performance Check-D2450V2

Frequency: 2450 MHz; Duty Cycle: 1:1; Room Ambient Temperature: 22.3°C; Liquid Temperature: 22.1°C
Medium parameters used: $f = 2450$ MHz; $\sigma = 1.814$ S/m; $\epsilon_r = 38.56$; $\rho = 1000$ kg/m³

DASY5 Configuration:

- Area Scan Setting: Find Secondary Maximum Within: 2.0 dB and with a peak SAR value greater than 0.0012W/kg
- Electronics: DAE4 Sn558; Calibrated: 2020/11/24
- Probe: EX3DV4 - SN3665; ConvF(7.35, 7.35, 7.35) @ 2450 MHz; Calibrated: 2020/8/20
- Sensor-Surface: 2mm (Mechanical Surface Detection)
- Phantom: ELI

Head/Pin=250mW/Area Scan (51x81x1): Interpolated grid: dx=1.200 mm, dy=1.200 mm
Maximum value of SAR (interpolated) = 21.1 W/kg

Head/Pin=250mW/Zoom Scan (7x7x7)/Cube 0: Measurement grid: dx=5mm, dy=5mm, dz=5mm

Reference Value = 107.1 V/m; Power Drift = -0.04 dB

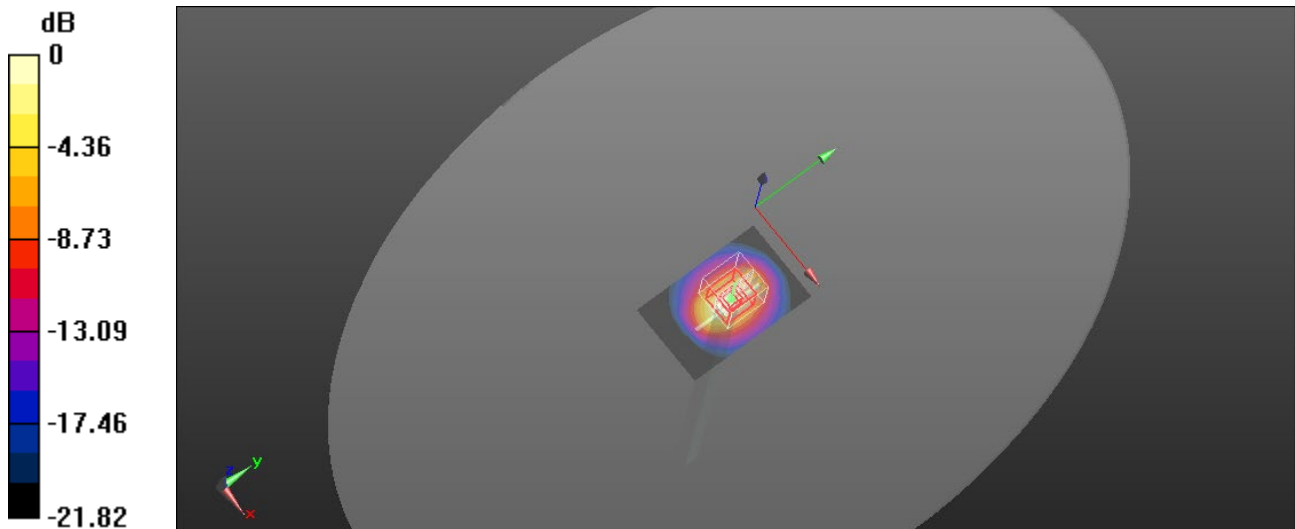
Peak SAR (extrapolated) = 26.9 W/kg

SAR(1 g) = 13.2 W/kg; SAR(10 g) = 6.24 W/kg

Smallest distance from peaks to all points 3 dB below = 9 mm

Ratio of SAR at M2 to SAR at M1 = 49.7%

Maximum value of SAR (measured) = 19.9 W/kg



0 dB = 19.9 W/kg = 12.99 dBW/kg

System Performance Check-D5300V2

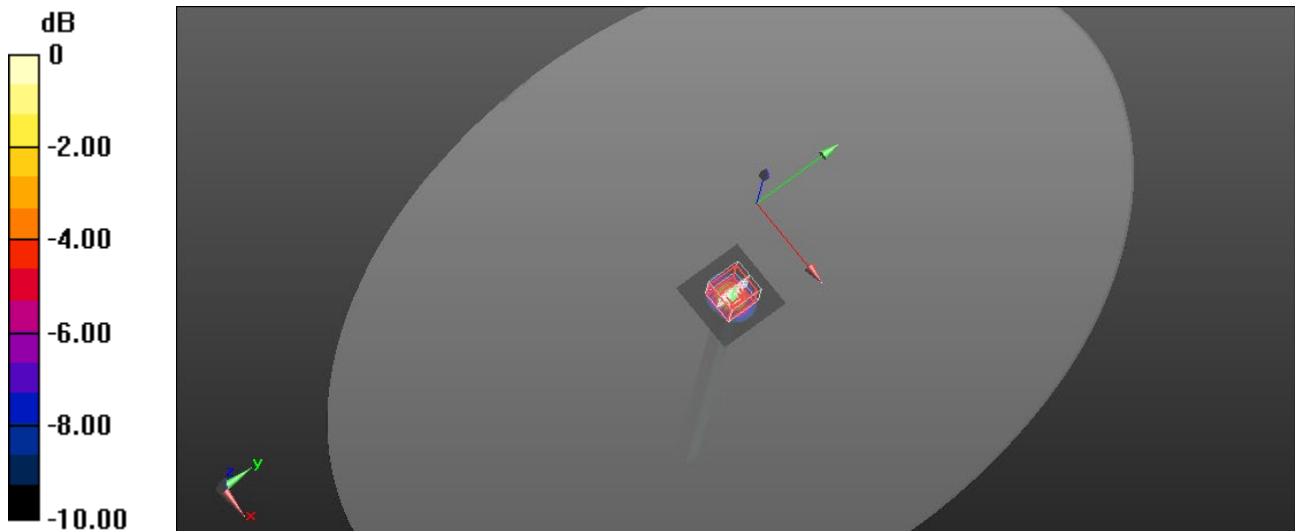
Frequency: 5300 MHz; Duty Cycle: 1:1; Room Ambient Temperature: 23.1°C; Liquid Temperature: 22.9°C
Medium parameters used: $f = 5300$ MHz; $\sigma = 4.873$ S/m; $\epsilon_r = 36.98$; $\rho = 1000$ kg/m³

DASY5 Configuration:

- Area Scan Setting: Find Secondary Maximum Within: 2.0 dB and with a peak SAR value greater than 0.0012W/kg
- Electronics: DAE4 Sn558; Calibrated: 2020/11/24
- Probe: EX3DV4 - SN3665; ConvF(5.25, 5.25, 5.25) @ 5300 MHz; Calibrated: 2020/8/20
- Sensor-Surface: 2mm (Mechanical Surface Detection)
- Phantom: ELI

Head/Pin=100mW/Area Scan (51x51x1): Interpolated grid: dx=1.000 mm, dy=1.000 mm
Maximum value of SAR (interpolated) = 16.8 W/kg

Head/Pin=100mW/Zoom Scan (7x7x12)/Cube 0: Measurement grid: dx=4mm, dy=4mm, dz=2mm
Reference Value = 61.61 V/m; Power Drift = -0.00 dB
Peak SAR (extrapolated) = 31.5 W/kg
SAR(1 g) = 8.01 W/kg; SAR(10 g) = 2.43 W/kg
Smallest distance from peaks to all points 3 dB below = 7.9 mm
Ratio of SAR at M2 to SAR at M1 = 55.1%
Maximum value of SAR (measured) = 16.1 W/kg



0 dB = 16.1 W/kg = 12.07 dBW/kg

System Performance Check-D5600V2

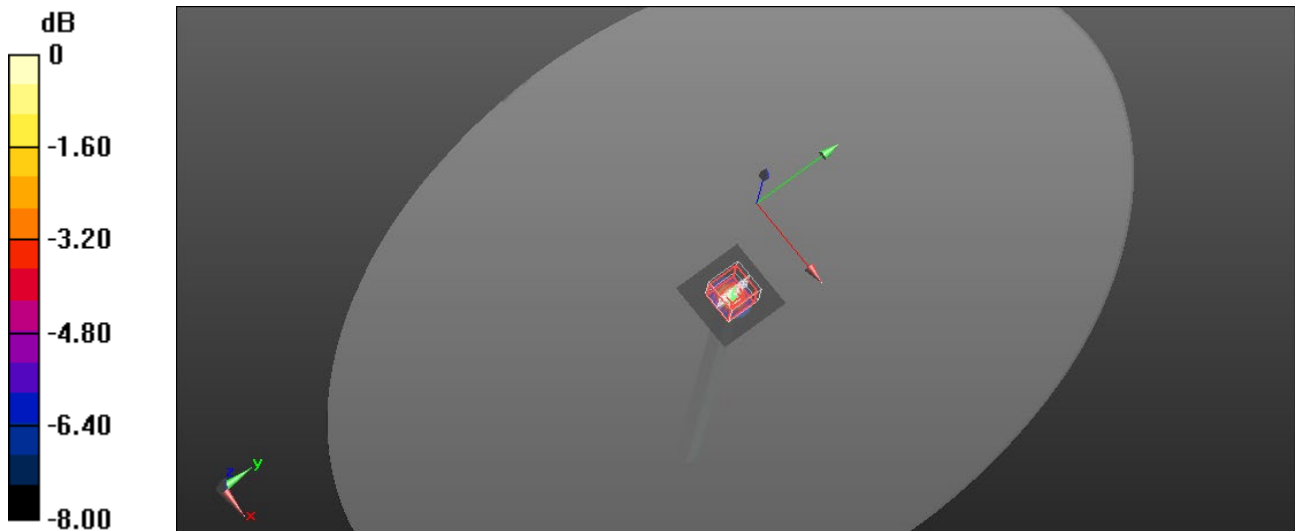
Frequency: 5600 MHz; Duty Cycle: 1:1; Room Ambient Temperature: 23.1°C; Liquid Temperature: 22.9°C
Medium parameters used: $f = 5600$ MHz; $\sigma = 5.027$ S/m; $\epsilon_r = 36.557$; $\rho = 1000$ kg/m³

DASY5 Configuration:

- Area Scan Setting: Find Secondary Maximum Within: 2.0 dB and with a peak SAR value greater than 0.0012W/kg
- Electronics: DAE4 Sn558; Calibrated: 2020/11/24
- Probe: EX3DV4 - SN3665; ConvF(4.95, 4.95, 4.95) @ 5600 MHz; Calibrated: 2020/8/20
- Sensor-Surface: 2mm (Mechanical Surface Detection)
- Phantom: ELI

Head/Pin=100mW/Area Scan (51x51x1): Interpolated grid: dx=1.000 mm, dy=1.000 mm
Maximum value of SAR (interpolated) = 16.8 W/kg

Head/Pin=100mW/Zoom Scan (7x7x12)/Cube 0: Measurement grid: dx=4mm, dy=4mm, dz=2mm
Reference Value = 60.08 V/m; Power Drift = -0.04 dB
Peak SAR (extrapolated) = 32.9 W/kg
SAR(1 g) = 7.82 W/kg; SAR(10 g) = 2.35 W/kg
Smallest distance from peaks to all points 3 dB below = 7.9 mm
Ratio of SAR at M2 to SAR at M1 = 52.5%
Maximum value of SAR (measured) = 15.8 W/kg



0 dB = 15.8 W/kg = 11.99 dBW/kg

System Performance Check-D5800V2

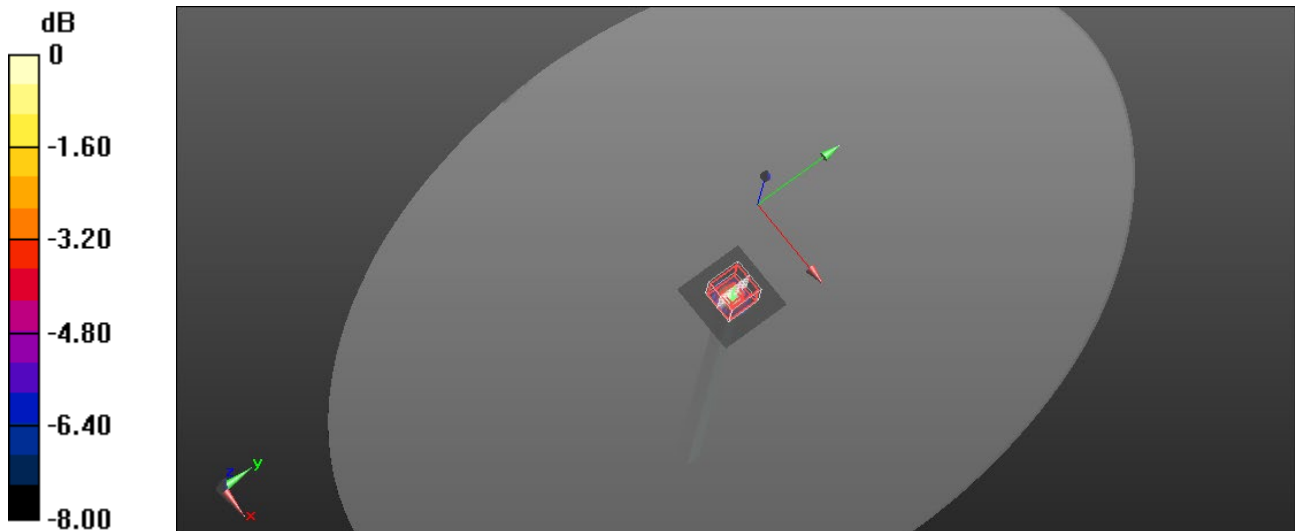
Frequency: 5800 MHz; Duty Cycle: 1:1; Room Ambient Temperature: 23.3°C; Liquid Temperature: 23.0°C
Medium parameters used: $f = 5800 \text{ MHz}$; $\sigma = 5.426 \text{ S/m}$; $\epsilon_r = 34.625$; $\rho = 1000 \text{ kg/m}^3$

DASY5 Configuration:

- Area Scan Setting: Find Secondary Maximum Within: 2.0 dB and with a peak SAR value greater than 0.0012W/kg
- Electronics: DAE4 Sn558; Calibrated: 2020/11/24
- Probe: EX3DV4 - SN3665; ConvF(4.97, 4.97, 4.97) @ 5800 MHz; Calibrated: 2020/8/20
- Sensor-Surface: 2mm (Mechanical Surface Detection)
- Phantom: ELI

Head/Pin=100mW/Area Scan (51x51x1): Interpolated grid: $dx=1.000 \text{ mm}$, $dy=1.000 \text{ mm}$
Maximum value of SAR (interpolated) = 17.3 W/kg

Head/Pin=100mW/Zoom Scan (7x7x12)/Cube 0: Measurement grid: $dx=4\text{mm}$, $dy=4\text{mm}$, $dz=2\text{mm}$
Reference Value = 59.96 V/m; Power Drift = -0.11 dB
Peak SAR (extrapolated) = 35.6 W/kg
SAR(1 g) = 7.76 W/kg; SAR(10 g) = 2.19 W/kg
Smallest distance from peaks to all points 3 dB below = 7.4 mm
Ratio of SAR at M2 to SAR at M1 = 50.5%
Maximum value of SAR (measured) = 16.6 W/kg



0 dB = 16.6 W/kg = 12.20 dBW/kg