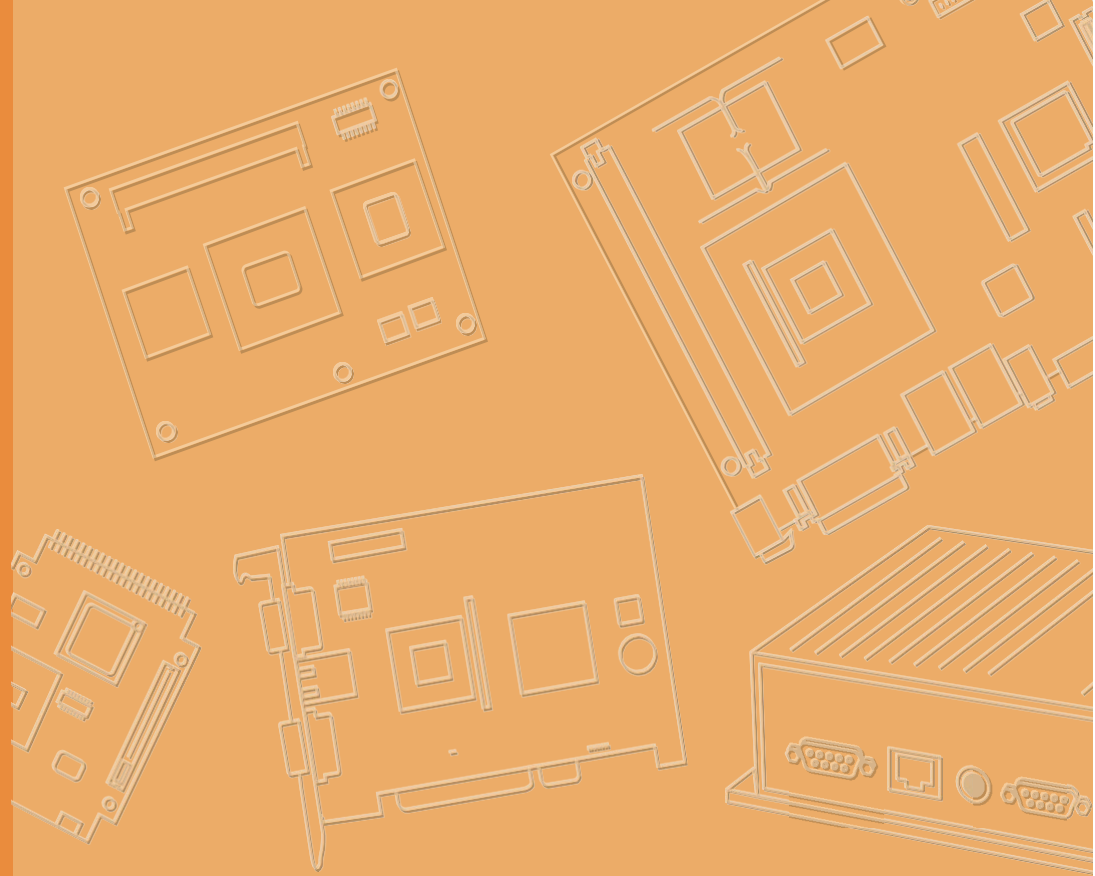


**User Manual**



# **AIM-68H Series**

**Tablet PC**

**ADVANTECH**

*Enabling an Intelligent Planet*

# Copyright

The documentation and the software included with this product are copyrighted 2023 by Advantech Co., Ltd. All rights are reserved. Advantech Co., Ltd. reserves the right to make improvements in the products described in this manual at any time without notice. No part of this manual may be reproduced, copied, translated, or transmitted in any form or by any means without the prior written permission of Advantech Co., Ltd. The information provided in this manual is intended to be accurate and reliable. However, Advantech Co., Ltd. assumes no responsibility for its use, nor for any infringements of the rights of third parties that may result from its use.

## Acknowledgments

Intel and Pentium are trademarks of Intel Corporation.

Microsoft Windows and MS-DOS are registered trademarks of Microsoft Corp.

All other product names or trademarks are properties of their respective owners.

## Product Warranty (2 years)

Advantech warrants the original purchaser that each of its products will be free from defects in materials and workmanship for two years from the date of purchase.

This warranty does not apply to any products that have been repaired or altered by persons other than repair personnel authorized by Advantech, or products that have been subject to misuse, abuse, accident, or improper installation. Advantech assumes no liability under the terms of this warranty as a consequence of such events.

Because of Advantech's high quality-control standards and rigorous testing, most customers never need to use our repair service. If an Advantech product is defective, it will be repaired or replaced free of charge during the warranty period. For out-of-warranty repairs, customers will be billed according to the cost of replacement materials, service time, and freight. Please consult your dealer for more details.

If you believe your product is defective, follow the steps outlined below.

1. Collect all the information about the problem encountered. (For example, CPU speed, Advantech products used, other hardware and software used, etc.) Note anything abnormal and list any onscreen messages displayed when the problem occurs.
2. Call your dealer and describe the problem. Please have your manual, product, and any helpful information readily available.
3. If your product is diagnosed as defective, obtain a return merchandise authorization (RMA) number from your dealer. This allows us to process your return more quickly.
4. Carefully pack the defective product, a completed Repair and Replacement Order Card, and a proof of purchase date (such as a photocopy of your sales receipt) into a shippable container. Products returned without a proof of purchase date are not eligible for warranty service.
5. Write the RMA number clearly on the outside of the package and ship the package prepaid to your dealer.

# Declaration of Conformity

## CE Conformity Statement

Radio products with the CE alert marking comply with the RED Directive (2014/53/EU) and Electromagnetic Compatibility Directive (2014/30/EU) issued by the Commission of the European Community. Compliance with this directive implies conformity to the following European Norms (in brackets are the equivalent international standards).

- EN 62368-1 (IEC62368-1) - Product Safety
- ETSI EN 300 328 Technical requirement for radio equipment
- ETSI EN 301 893 Technical requirement for radio equipment
- ETSI EN 300 330 Short Range Devices (SRD)
- ETSI EN 300 440 Short Range Devices (SRD)
- ETSI EN 303 687 6 GHz WAS/RLAN
- ETSI EN 301 489 General EMC requirements for radio equipment
- EN 55011 Industrial, scientific and medical equipment EMC
- EN 60601-1-2 Medical electrical equipment EMC
- EN 60601-1 Medical electrical equipment safety
- EN 62311 Human exposure
- EN 62209-2 Human exposure
- EN 50566 Human exposure

Products that contain the radio transmitter are labeled with CE alert marking and may also carry the CE logo.

The full text of the EU declaration of conformity is available at the following internet address: <https://www.advantech.com>

The device is restricted to indoor use only when operating in the 5150 to 5350 MHz frequency range.

This device is intended for indoor use only when operating in the frequency range 5945 to 6425 MHz which is applicable in countries that support WiFi 6E.

The adapter shall be installed near the equipment and shall be easily accessible.

Caution - Risk of explosion if battery is replaced by an incorrect type.  
Dispose of used batteries according to the instructions.

Slave station: The transmission of radio equipment is indoors use only

Software Version	V1.1
<b>Maximum Power Output</b>	
(2400 - 2483.5 MHz) IEEE802.11 b/g/n/ax mode Bluetooth	20dBm EIRP max (100mW)
(2400 - 2483.5 MHz) BLE	10dBm EIRP max (10mW)
(5150 - 5725 MHz) IEEE802.11 a/n/ac/ax mode	23dBm EIRP max (200mW) The low band 5.15 - 5.35 GHz is for indoor use only
(5725 - 5875 MHz) IEEE802.11 a/n/ac/ax mode	13.98 dBm EIRP Max (25mW) For the standard EN 300 440, the device operating in 5.8 GHz is considered a category 1 receiver
(5925 - 6425 MHz) IEEE802.11ax	23 dBm EIRP max (200mW) The band 5.925 - 6.425GHz is for LPI (Low Power in-door)



AT	BE	BG	CH	CY	CZ	DK	DE
EE	EL	ES	FI	FR	HR	HU	IE
IS	IT	LT	LU	LV	MT	NL	PL
PT	RO	SI	SE	SK	NI		

## RoHS

- EN IEC 63000:2018

Products that contain the radio transmitter are labeled with CE alert marking and may also carry the CE logo.

## CE RF Exposure warning

This device meets the EU requirements (2014/53/EU) on the limitation of exposure of the general public to electromagnetic fields by way of health protection.

The limits are part of extensive recommendations for the protection of the general public. These recommendations have been developed and checked by independent scientific organizations through regular and thorough evaluations of scientific studies. The unit of measurement for the European Council's recommended limit for mobile devices is the "Specific Absorption Rate" (SAR), and the SAR limit is 2.0 W/Kg averaged over 10 grams of body tissue. It meets the requirements of the International Commission on Non-Ionizing Radiation Protection (ICNIRP).

For next-to-body operation, this device has been tested and meets the ICNRP exposure guidelines and the European Standard EN 50566 and EN 62209-2. SAR is measured with the device directly contacted to the body while transmitting at the highest certified output power level in all frequency bands of the mobile device.

## FCC Compliance Statement

This equipment has been tested and found to comply with the limits for a Class B digital device, pursuant to part 15 of the FCC Rules. These limits are designed to provide reasonable protection against harmful interference in a residential installation. This equipment generates, uses and can radiate radio frequency energy and, if not installed and used in accordance with the instructions, may cause harmful interference to radio communications. However, there is no guarantee that interference will not occur in a particular installation. If this equipment does cause harmful interference to radio or television reception, which can be determined by turning the equipment off and on, the user is encouraged to try to correct the interference by one or more of the following measures:

- Reorient or relocate the receiving antenna.
- Increase the separation between the equipment and receiver.
- Connect the equipment into an outlet on a circuit different from that to which the receiver is connected.
- Consult the dealer or an experienced radio/ TV technician for help.

To assure continued compliance, any changes or modifications not expressly approved by the party responsible for compliance could void the user's authority to operate this equipment. (Example: use only shielded interface cables when connecting to computer or peripheral devices).

This device complies with Part 15 of the FCC Rules. Operation is subject to the following two conditions:

- 1) This device may not cause harmful interference, and
- 2) This device must accept any interference received, including interference that may cause undesired operation.

## 15.21

Any changes or modifications not expressly approved by the party responsible for compliance could void the authority to operate equipment.

This device and its antenna must not be co-located or operating in conjunction with any other antenna or transmitter.

End-users and installers must be provided with antenna installation instructions and transmitter operating conditions for satisfying RF exposure compliance.

For product available in the USA/Canada market, only channel 1~11 can be operated. Selection of other channels is not possible.

This device is slave equipment, the device is not radar detection and not ad-hoc operation in the DFS band.

Operation of transmitters in the 5.925-7.125 GHz band is prohibited for control of or communications with unmanned aircraft systems.

### **FCC Radiation Exposure Statement**

This equipment complies with FCC RF radiation exposure limits set forth for an uncontrolled environment for body-worn configuration in direct contact to the phantom.

This device complies with FCC radiation exposure limits set forth for an uncontrolled environment.

This equipment complies with FCC radiation exposure limits set forth for an uncontrolled environment. End user must follow the specific operating instructions for satisfying RF exposure compliance. This transmitter must not be co-located or operating in conjunction with any other antenna or transmitter.

The portable device is designed to meet the requirements for exposure to radio waves established by the Federal Communications Commission (USA). These requirements set a SAR limit of 1.6 W/kg averaged over one gram of tissue. The highest SAR value reported under this standard during product certification for use when properly worn on the body

The FCC has granted an Equipment Authorization for this device with all reported SAR levels evaluated as in compliance with the FCC RF exposure guidelines. SAR information on this device is on file with the FCC and can be found under the Display Grant section of <https://apps.fcc.gov/oetcf/eas/reports/GenericSearch.cfm> after searching on FCC ID: M82-AIM-68S

### **IC Warning Statement**

This device complies with Industry Canada's licence-exempt RSSs. Operation is subject to the following two conditions: (1) This device may not cause interference; and (2) This device must accept any interference, including interference that may cause undesired operation of the device.

Le présent appareil est conforme aux CNR d'Industrie Canada applicables aux appareils radio exempts de licence. L'exploitation est autorisée aux deux conditions suivantes : (1) l'appareil ne doit pas produire de brouillage, et (2) l'utilisateur de l'appareil doit accepter tout brouillage radioélectrique subi, même si le brouillage est susceptible d'en compromettre le fonctionnement.

This radio transmitter has been approved by Industry Canada to operate with the antenna types listed below with the maximum permissible gain and required antenna impedance are strictly prohibited for use with this device.

Le présent émetteur radio a été approuvé par Industrie Canada pour fonctionner avec les types d'antenne énumérés ci-dessous et ayant un gain admissible maximal

et l'impédance requise pour chaque type d'antenne. Les types d'antenne non inclus dans cette liste, ou dont le gain est supérieur au gain maximal indiqué, sont strictement interdits pour l'exploitation de l'émetteur.

(i) the device for operation in the band 5150–5250 MHz is only for indoor use to reduce the potential for harmful interference to co-channel mobile satellite systems; (For devices installed in vehicles point i. is not required.)

Users should also be advised that high-power radars are allocated as primary users (i.e. priority users) of the bands 5250-5350 MHz and 5650-5850 MHz and that these radars could cause interference and/or damage to LE-LAN devices.

(i) l'appareil pour fonctionner dans la bande 5150-5250 MHz est réservé à une utilisation en intérieur afin de réduire les risques d'interférences nuisibles à la co-canal systèmes mobiles par satellite;

Devraient également être informés les utilisateurs que les radars à haute puissance sont désignés comme utilisateurs principaux (c.-à-utilisateurs prioritaires) des bandes 5250-5350 MHz et 5650-5850 MHz et que ces radars pourraient provoquer des interférences et / ou endommager les appareils LE-LAN.

Devices shall not be used for control of or communications with unmanned aircraft systems.

Les appareils ne doivent pas être utilisés pour contrôler ou communiquer avec des systèmes d'aéronefs sans pilote.

### **IC Radiation Exposure Statement**

This EUT is compliance with SAR for general population/uncontrolled exposure limits in IC RSS-102. This equipment should be installed and operated with minimum distance 0 cm between the radiator & your body.

Cet EUT est la conformité avec SAR pour la population générale / les limites d'exposition incontrôlées dans IC RSS-102. Cet équipement doit être installé et utilisé à une distance minimale de 0 cm entre le radiateur et votre corps.

This equipment complies with ISED radiation exposure limits set forth for an uncontrolled environment. End user must follow the specific operating instructions for satisfying RF exposure compliance. This transmitter must not be co-located or operating in conjunction with any other antenna or transmitter.

The portable device is designed to meet the requirements for exposure to radio waves established by the ISED. These requirements set a SAR limit of 1.6 W/kg averaged over one gram of tissue. The highest SAR value reported under this standard during product certification for use when properly worn on the body.

Cet équipement est conforme aux limites d'exposition aux rayonnements ISED établies pour un environnement non contrôlé. L'utilisateur final doit suivre les instructions spécifiques pour satisfaire les normes. Cet émetteur ne doit pas être co-implanté ou fonctionner en conjonction avec toute autre antenne ou transmetteur.

# Technical Support and Assistance

1. Visit the Advantech website at [www.advantech.com/support](http://www.advantech.com/support) to obtain the latest product information.
2. Contact your distributor, sales representative, or Advantech's customer service center for technical support if you need additional assistance. Please have the following information ready before calling:
  - Product name and serial number
  - Description of your peripheral attachments
  - Description of your software (operating system, version, application software, etc.)
  - A complete description of the problem  
The exact wording of any error messages

## **Environmental protection:**

Follow national requirements to dispose of unit.

## **Manufacturer:**

Advantech Co., Ltd.  
No.1, Alley 20, Lane 26, Rueiguang Road Neihu District, Taipei,  
Taiwan 114, R.O.C.  
TEL: (02) 2792-7818

## **Distributed in Europe by:**

Advantech Service IoT GmbH  
Industriestraße 15  
82110 Germering  
Germany  
Phone: +49 (0) 89 41 11 91-0  
Fax: +49 (0) 89 41 11 91-900  
Email: [contact@advantech.de](mailto:contact@advantech.de)  
URL: <http://advantech-service-iot.eu>

Visit the Advantech websites at [www.advantech.com](http://www.advantech.com) or [www.advantech.com.tw](http://www.advantech.com.tw) if you need more information.

## **Authorized Representative:**

### **MedEnvoy Switzerland**

Gotthardstrasse 28, 6302 Zug, Switzerland

### **Emergo Europe B.V.**

Westervoortsedijk 60; 6827 AT Arnhem; The Netherlands

### **UK Responsible Person**

Emergo Consulting (UK) Limited  
c/o CR360 International, Compass House,  
Vision Park Histon, Cambridge CB24 9BZ,  
United Kingdom

## Warnings, Cautions, and Notes

**Warning!** Warnings indicate conditions that if not observed can cause personal injury!



**Caution!** Cautions are included to help prevent hardware damage and data losses. For example,



*“Batteries are at risk of exploding if incorrectly installed. Do not attempt to recharge, force open, or heat the battery. Replace the battery only with the same or equivalent type as recommended by the manufacturer. Discard used batteries according to the manufacturer's instructions.”*

**Note!** Notes provide additional optional information.



## Document Feedback

To assist us with improving this manual, we welcome all comments and constructive criticism. Please send all such feedback in writing to [support@advantech.com](mailto:support@advantech.com).



## Packing List

Before system installation, check that the items listed below are included and in good condition. If any item does not accord with the list, contact your dealer immediately.

- Quantity x Item XXXXXXXX
- 1 x User manual

## Safety Precautions - Static Electricity

Follow these simple precautions to protect yourself from harm and the products from damage.

- To avoid electrical shock, always disconnect the power from the PC chassis before manual handling. Do not touch any components on the CPU card or other cards while the PC is powered on.
- Disconnect the power before making any configuration changes. A sudden rush of power after connecting a jumper or installing a card may damage sensitive electronic components.

## Explanation of Graphical Symbols



IEC 60878 and ISO 3864-B.3.6: Warning dangerous voltage.

---



ISO 7000-0434: Caution, consult ACCOMPANYING DOCUMENTS.

---



ISO 7000-1641: Follow operating instructions or consult instructions for use.

---



IEC 60417-5009: STAND-BY.

---



IEC 60417-5032: Alternating Current.

---



IEC 60417-5031: Direct Current.

---



ISO 7010-M002: Follow instructions for use.



CE Marking



FCC Marking



CCC Marking



UL Marking



A-Tick and C-Tick logo- Australia EMC Marking



VCCI Marking



China RoHS 10 year life time Symbol



BSMI Marking

R33138  
RoHS



Directive 2012/19/EU : The WEEE Symbol



E-Mark



TELEC Marking



NCC Marking



Serial Number Marking



Production Identifier: Lot Number Marking



GTIN code Symbol



Manufacture Date (YYMMDD) Marking



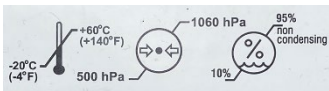
European Authorized Representative Marking



Swiss Authorized Representative Marking



Medical Device Marking



Packaging Marking (Temperature, Atmospheric Pressure and Humidity)

# Safety Instructions

1. Read these safety instructions carefully.
2. Retain this user manual for future reference.
3. Repair of the device may also only be carried out by trained service personnel.
4. Advantech recommends that a service contract be obtained with Advantech Service and that all repairs also be carried out by them. Otherwise the correct functioning of the device may be compromised.

**Warning!** *Because of the danger of electric shock, never remove the box of a device while it is in operation or connected to a power outlet.*



*En raison du risque d'électrocution, ne retirez jamais la boîte d'un appareil lorsqu'il est en fonctionnement ou branché à une prise de courant.*

5. If any of the following occurs, have the equipment checked by service personnel:
  - The power cord or plug is damaged.
  - Liquid has penetrated the equipment.
  - The equipment has been exposed to moisture.
  - The equipment is malfunctioning, or does not operate according to the user manual.
  - The equipment has been dropped and damaged.
  - The equipment shows obvious signs of breakage.
6. Disconnect the equipment from all power outlets before cleaning. Use only a damp cloth for cleaning. Do not use liquid or spray detergents.
7. Protect the equipment from humidity.

**Caution!** *To avoid short-circuits and otherwise damaging the device, do not allow fluids to come in contact with the device. If fluids are accidentally spilled on the equipment, remove the affected unit from service as soon as possible and contact service personnel to verify that patient safety is not compromised.*



*Pour éviter les courts-circuits et endommager l'appareil, ne laissez pas les liquides entrer en contact avec l'appareil. Si des liquides sont accidentellement répandus sur l'équipement, retirez l'unité concernée du service dès que possible et contactez le personnel de service pour vérifier que la sécurité du patient n'est pas compromise.*

8. For pluggable equipment, the power outlet socket must be located near the equipment and easily accessible.
9. Place the equipment on a reliable surface during installation. Dropping or letting the equipment fall may cause damage.
10. Do not leave this equipment in an uncontrolled environment where the Storage temperature is below 0° C or above 45° C. This may damage the equipment. Ne laissez pas cet équipement dans un environnement non contrôlé où la température de stockage est inférieure à 0 ° C ou supérieure à 45 ° C. Ceci pourrait endommager l'équipement.

11. Grounding reliability can only be achieved when the equipment is connected to an equivalent receptacle marked "Hospital Only" or "Hospital Grade".
12. Use a power cord that matches the voltage of the power outlet, which has been approved and complies with the safety standard of your particular country.
13. If the integrity of the protective earth conductor is in doubt. Please turn off the power switch.
14. To disconnect this product from the mains supply disconnects the mains plug from the socket outlet. The power supply is regarded as part of this equipment.
15. Make sure user not to contact SIP/SOPs and the patient at the same time.
16. Do not switch on/off the power switch of the battery system during operation.

**Warning!** *To avoid risk of electric shock, this equipment must only be connected to a supply mains with protective earth.*



*Pour éviter tout risque d'électrocution, cet équipement doit uniquement être raccordé à une alimentation secteur avec terre de protection.*

**Warning!** *No modification of this equipment is allowed.*



*Aucune modification de cet équipement n'est autorisée.*

17. The power cord for use on the device shall be no less robust than ordinary tough rubber sheathed flexible cord (IEC 60245-1:2003, Annex A, designation 53) or ordinary polyvinyl chloride sheathed flexible cord (IEC 60227-1:1993, Annex A, design. 53). For the US/CA the requirements of the NEC and Canadian code shall be followed (US and CA national differences).

**Warning!** *Battery system, equipotential pin, metal wiring on equipotential pin, wheels and brake shall be replaced/send back to maintain by the manufacturer every two years, risks of function failure, electrical shock, equipment damage, environment pollution and etc. may occur if not doing so.*



*Le système de batterie, la broche équipotentielle, le câblage métallique sur la broche équipotentielle, les roues et le frein doivent être remplacés/renvoyés par le fabricant tous les deux ans, les risques de défaillance de fonctionnement, les chocs électriques, les dommages matériels, etc. Ce faisant.*

18. If your computer clock is unable to keep accurate time, please check the battery.

**Caution!** *When the battery has problem of charging. Please contact a qualified technician or your retailer.*



*The computer is provided with a battery-powered real-time clock circuit.*

*There is a danger of explosion if battery is incorrectly replaced. Replace only with same or equivalent type recommended by the manufacturer.*

*Discard used batteries according to the manufacturer's instructions.*

*Lorsque la batterie a un problème de charge. Veuillez contacter un technicien qualifié ou votre revendeur.*

*L'ordinateur est équipé d'un circuit d'horloge en temps réel alimenté par batterie.*

*Il y a un risque d'explosion si la batterie est incorrectement remplacée.*

*Remplacez uniquement par le même type ou un type équivalent recommandé par le fabricant.*

*Jetez les piles usagées conformément aux instructions du fabricant.*

**Caution!** *When servicing the device, always use replacement parts that meet Advantech standards. Advantech Medical cannot warrant or endorse the safe performance of third-party replacement parts for use with our medical device.*



*Lors de la maintenance de l'appareil, utilisez toujours des pièces de rechange conformes aux normes Advantech. Advantech Medical ne peut pas garantir ou endosser les performances sécuritaires des pièces de rechange tierces à utiliser avec notre dispositif médical.*

19. When networking with electrical devices, the operator is responsible for ensuring that the resulting system meets the requirements set forth by the following standards:
- EN 60601-1 (IEC 60601-1)  
Medical electrical equipment  
Part 1: General requirements for safety
  - EN 60601-1-2 (IEC 60601-1-2)  
Medical electrical equipment  
Part 1-2: General requirements for safety  
Collateral standard: Electromagnetic compatibility; Requirements and tests
20. Follow national, state or local requirements to dispose of unit.
21. Maintenance: to properly maintain and clean the surfaces, use only the approved products or clean with a dry applicator.
22. Contact information:  
No.1, Alley 20, Lane 26, Rueiguang Road Neihu District, Taipei, Taiwan 114, R.O.C.  
TEL: +886 2-7732-3399
- 23.



24. This equipment shall not be used as a life support system.

25. Accessory equipment connected to analog and digital interfaces must be in compliance with the respective nationally harmonized IEC standards (i.e. IEC 60950 for data processing equipment, IEC 60065 for video equipment, IEC 61010-1 for laboratory equipment, and IEC 60601-1 for medical equipment.) Furthermore, all configurations shall comply with IEC 60601-1 ME system. Anyone who connects additional equipment to the signal input part or signal output part is configuring a medical system, and is therefore, responsible that the system complies with the requirements of IEC 60601-1 ME system. The unit is for exclusive interconnection with IEC 60601-1 certified equipment in the patient environment and IEC 60XXX certified equipment out-side of the patient environment. If in doubt, consult the technical services department or your local representative.
26. Use a power cord that matches the voltage of the power outlet, which has been approved and complies with the safety standard of your particular country.
27. Position the power cord away from high-traffic areas. Do not place anything over the power cord.

**Note!** *Environmental protection.*



*Follow national requirements to dispose of unit.*

28. CAUTION: This adapter FSP065M-DUA is a forming part of the medical device.
29. Remove the power cord to fully turn off the device when the battery pack is empty.
30. Classification:
  - 1). Class II
  - 2). No applied part
  - 3). Continuous Operation
31. CAUTION! This product: AIM-68H is used with the Qualified & certificated power adapter: FSP065M-DUA. Input: 100-240Vac, 47-63Hz, 1.7A Output: 5Vdc/3A or 9Vdc/3A or 12Vdc/3A or 15Vdc/3A or 20Vdc/3.25A.
32. In case of serious incident that has occurred, please contact the manufacturer and local authorities immediately.  
Notice: It is recommended to install the appropriate soft if have any question, please contact the manufacturer for further assistance.  
Notice: To prevent unauthorized access, it is recommended to install suitable anti-virus software or do not connect to unsafe external networks
33. DISCLAIMER: These instructions are provided according to IEC 704-1 standards. Advantech disclaims all responsibility for the accuracy of any statements contained herein.

# Contents

<b>Chapter 1</b>	<b>Getting Started.....</b>	<b>1</b>
1.1	Unpacking.....	2
1.1.1	Inside the Box: Standard.....	2
1.1.2	Optional Accessories.....	2
1.1.3	Optional Docking & Station.....	2
1.2	AIM-68H at a Glance & Description of Parts .....	3
<b>Chapter 2</b>	<b>Using the Tablet .....</b>	<b>4</b>
2.1	Battery Caution .....	5
2.1.1	Battery Charge Notice .....	5
2.1.2	Storage and Safety Notice.....	5
2.2	Connecting to Power Supply .....	6
2.3	Turning on and off the Display.....	7
2.3.1	Turning on .....	7
2.3.2	Turning off.....	8
2.4	Touch Screen Operation .....	9
2.4.1	The Touchscreen Supports Core Gesture for Windows .....	10
2.4.2	Cleaning and Disinfecting Instruction.....	10
2.5	Waking up the Tablet .....	10
2.6	Using the Strat Button.....	11
2.7	Using the Windows Taskbar.....	12
2.8	Using the Action Center.....	12
2.9	Using the Windows Setting .....	13
<b>Chapter 3</b>	<b>Networks and Wireless Devices .....</b>	<b>14</b>
3.1	Connecting to Wi-Fi Network.....	15
3.2	Adding Wi-Fi Network .....	16
3.3	Connecting Bluetooth Device to Tablet.....	19

# Chapter 1

Getting Started



## 1.1 Unpacking

### 1.1.1 Inside the Box: Standard

1. Tablet PC
2. Power Adaptor



Your package may include below peripherals based on your order.

### 1.1.2 Optional Accessories

- Shoulder Strap



Shoulder Strap

### 1.1.3 Optional Docking & Station

- Office Docking
- VESA Docking

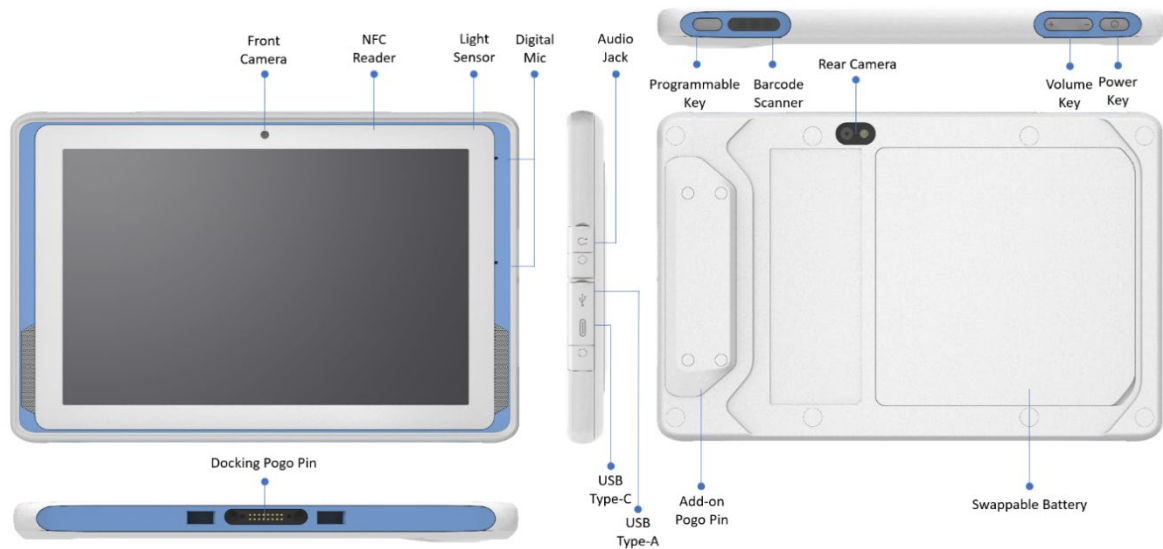


Desk Docking



VESA Docking

## 1.2 AIM-68H at a Glance & Description of Parts



No	Item	Description of Parts
1	5MP Front Camera	5.0-megapixel fixed-focus camera.
2	NFC Reader	NFC card reader
3	Ambient Light Sensor	The goal of this application is to improve the visual experience and make the lighting comfortable for user.
4	Digital Mic	Capture audio input.
5	Audio Jack (Headset Combo)	Audio Jack headset combo port
6	USB 3.1 Type C	High speed USB port connects to PC or USB devices such as type-c USB key, etc.
7	USB 3.1 Type A	Used primarily for high-speed data transfer between devices such as mouse, keyboard, etc.
8	Docking Pogo Pin	Port to docking solutions such as office docking to provide power and external I/O.
9	Programmable Key	To active the customized function. Default Setting: Barcode Scanner
10	Volume Key	Volume Control (Up) Raise volume, (Down) Lower volume.
11	Power Button	Power on/off.
12	Rear Camera	13.0-megapixel auto-focus camera with LED flash.
13	Swappable Battery	Replaceable tablet battery allows users to quickly swap out battery to extend device usage without downtime
14	Add On Pogo Pin	Customized add-on module could be added by USB2.0 pogo pins

# Chapter 2

Using the Tablet

## 2.1 Battery Caution

**Caution!** *Danger of explosion if battery is incorrectly replaced. Replace only with the same type recommended by the manufacturer, discard used batteries according to the manufacturer's instructions.*



*Danger d'explosion si la batterie est inexactement remplacée. Remplacez seulement avec la même chose ou le type recommandé par le fabricant, jettent les batteries utilisées instructions de s selon fabricant des'. Mistreat the battery used in this device may present a risk of fire or chemical burn.*

Discontinue using device immediately if you notice the battery is swelling, or looks puffy or misshapen. Do not attempt to disassemble the computer or its accessories. Only qualified personal is allowed to replace the battery. Do not dispose batteries in a fire and check with local authorities for disposal instructions. can only be equipped with standard battery pack with FUCO, AIM-68S-BAT, 4010mAH Polymer Lithium Ion Battery. Use of another battery may present a risk of fire or explosion.

### 2.1.1 Battery Charge Notice

It is important to consider the environment temperature whenever you are charging the Lithium-Ion battery pack. The process is more efficient at normal room temperature or slightly cooler. It is essential that you charge batteries within the stated range of 0°C to 40°C. Charging batteries outside of the specified range could damage the batteries and shorten their charging life cycle.

### 2.1.2 Storage and Safety Notice

Although charge Lithium-Ion batteries may be left unused for several months, their capacity may be depleted due to the buildup of internal resistance. If this happens they will require recharging prior to use. Lithium Ion batteries may be stored at temperatures between -20° C to 60° C, however they may be depleted more rapidly at the high end of this range. It is recommended to store within normal room temperature ranges.

## 2.2 Connecting to Power Supply

The Tablet Computer operates either on external AC power or internal battery power. It is recommended to use AC power when you start up the Tablet Computer for the first time.

**Warning!** Use only the AC adapter that included with your Tablet PC. Using other AC adapters may damage the Tablet PC and the Battery. For users start up the Tablet PC for the first time with internal battery power, please make sure the battery is fully charged before using.



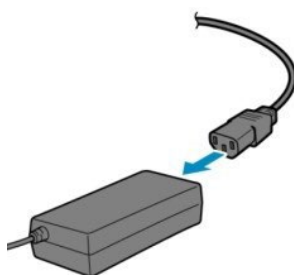
*Utilisez uniquement l'adaptateur secteur fourni avec votre ordinateur tablette. L'utilisation d'autres adaptateurs secteur peut endommager la tablette et la batterie. Pour les utilisateurs qui démarrent l'ordinateur tablette pour la première fois avec une alimentation par batterie interne, veuillez vous assurer que la batterie est complètement chargée avant de l'utiliser.*

Perform the following to connect the Tablet pc to AC Power:

- 2.2.1 On the side of the Tablet PC, lift the I/O protective cover by pulling on the latch.



- 2.2.2 Securely plug the power cord fully into the AC adapter inlet.



### 2.2.3 Plug the AC adapter into the USB Type-c port of the Tablet pc.



When the AC Adapter is connected, the battery pack starts charging. The battery LED indicator on the tablet pc would show different states. Please refer to description of LED indicator on Description of Parts.

---

**Non-removable battery: 4010mAh @ 11.55VDC (46.3 WHr)**

---

Operating time           Up to 6.5 hours

---

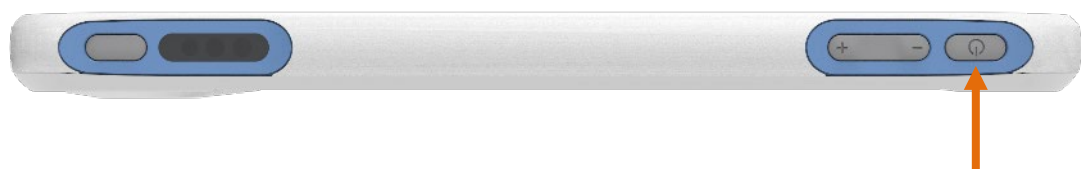
Charging time           < 3 hours

---


## 2.3 Turning on and off the Display

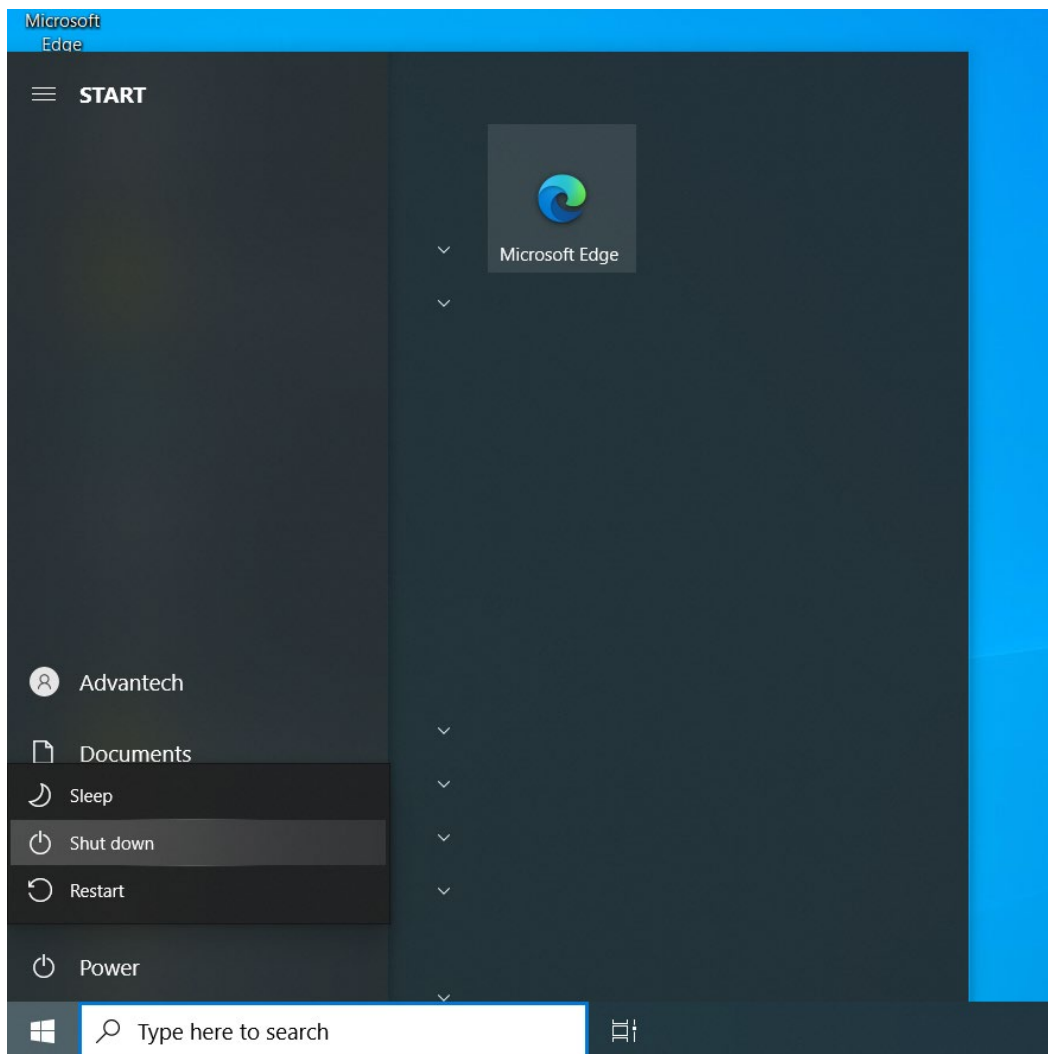
### 2.3.1 Turning on

Press and hold the power button for 3 seconds, located on the top right side of the unit.



## 2.3.2 Turning off

To turn off the device, press the start button, then click power, tap the **Shut down** .



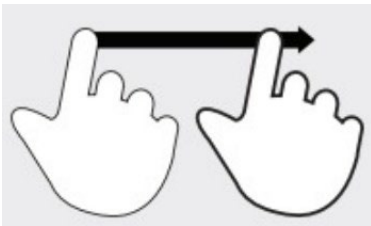
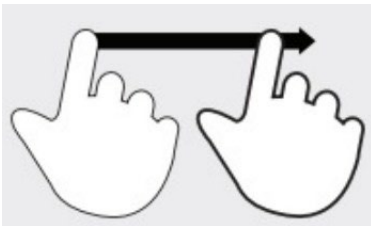
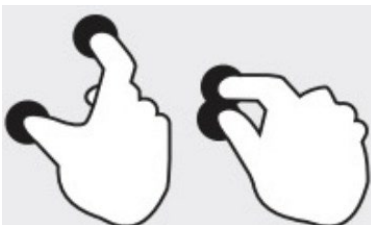
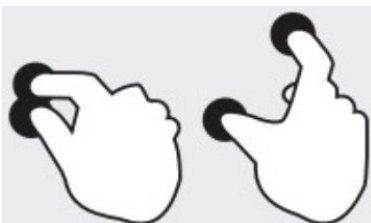


## 2.4 Touch Screen Operation

### 2.4.1 The Touchscreen Supports Core Gesture for Windows

**Caution!** *The touchscreen is designed to be touched gently with your fingers. Do not press it strongly with your fingers or push into it with a pointed object such as your nail, pen, or a pin, etc.*



Gesture	Action	Description
Tap		Briefly touch surface with fingertip.
Press		Touch surface for extended period of time
Drag		Move fingertip over surface without losing contact.
Flick		Quickly brush surface with fingertip.
Pinch		Touch surface with two fingers and bring them closer together.
Spread		Touch surface with two fingers and move them apart.



---

Double-Tap



Rapidly touch surface twice with fingertip.

---

## 2.4.2 Cleaning and Disinfecting Instruction

During normal use of the AIM tablet the device may become dirty and should be regularly cleaned.

- 2.4.2.1 Turn off the AIM-68H and unplug the power cord.
- 2.4.2.2 Wipe the screen and exterior with a soft, damp cloth moistened only with water. Do not use liquid or aerosol cleaners on the screen, as these will discolor the finish and damage the screen.
- 2.4.2.3 Clean the LCD display only with a soft cloth dampened with 60% above isopropyl alcohol or 60% above ethyl alcohol each time after use.

**Caution!** Do not immerse or rinse the AIM tablet or its peripherals. If you accidentally spill liquid on the device, disconnect the unit from the power source. Contact your IT support department regarding the continued safety of the unit before placing it back in Operation-Do not spray cleaning agent on the chassis.



**Caution!** Do not use disinfectants that contain phenol.




**Caution!** Do not autoclave or clean the AIM Tablet or its peripherals with strong aromatic, chlorinated, ketone, ether, or ether solvents, sharp tools or abrasives. Never immerse electrical connectors in water or other liquids.

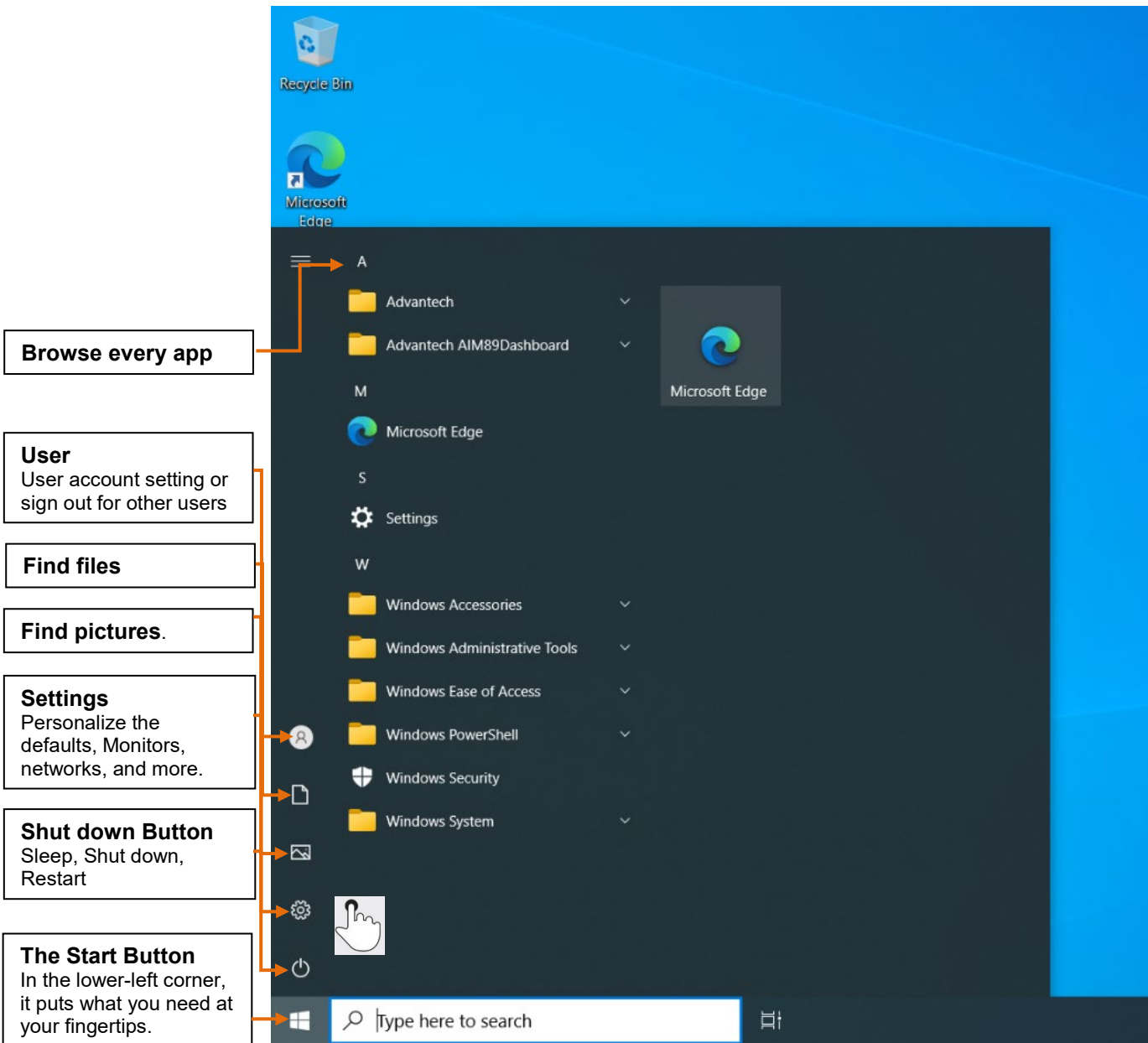


## 2.5 Waking up the Tablet

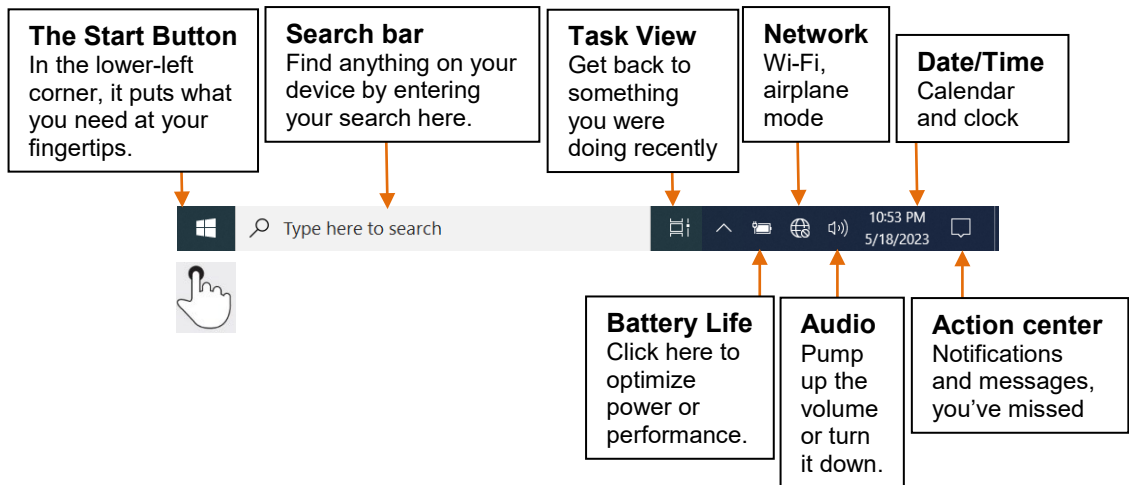
To save power, after 4 minute of inactivity the screen would turn off. User can press the power button on the right side of the tablet to wake AIM-68H when you want to useit again.

## 2.6 Using the Strat Button

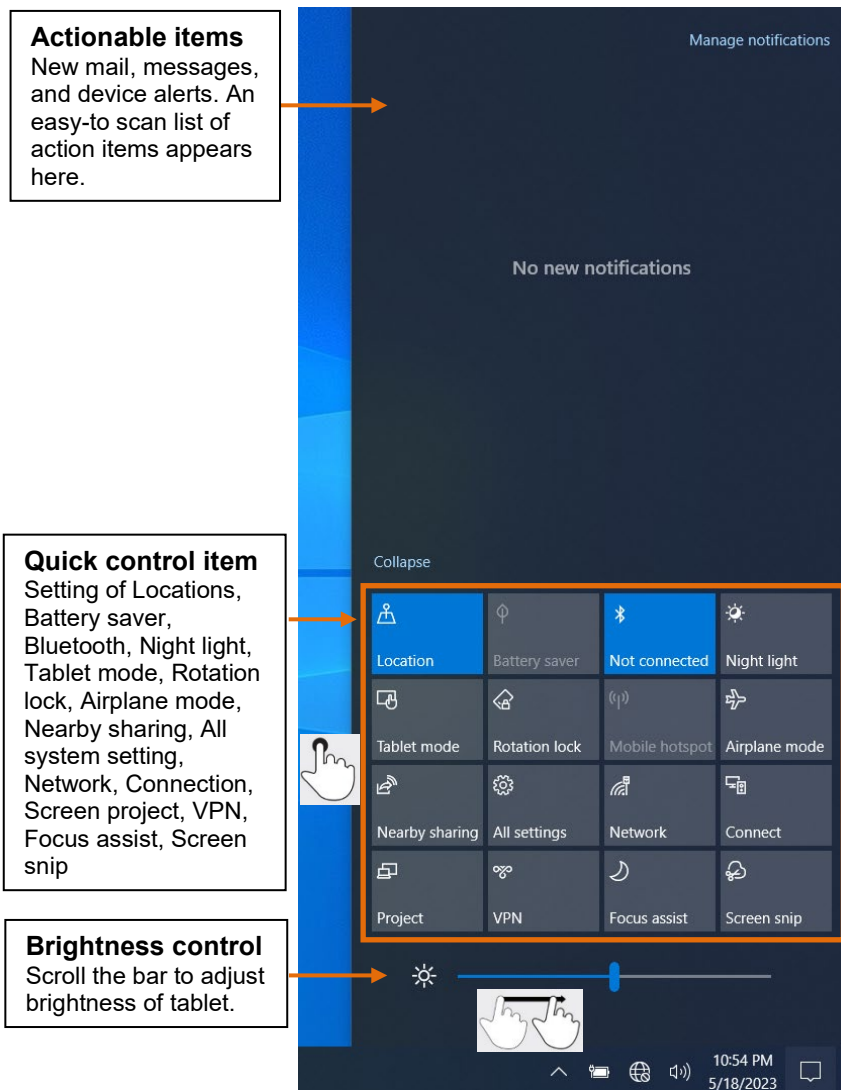
Start your Windows 10 from the Start Button .



## 2.7 Using the Windows Taskbar



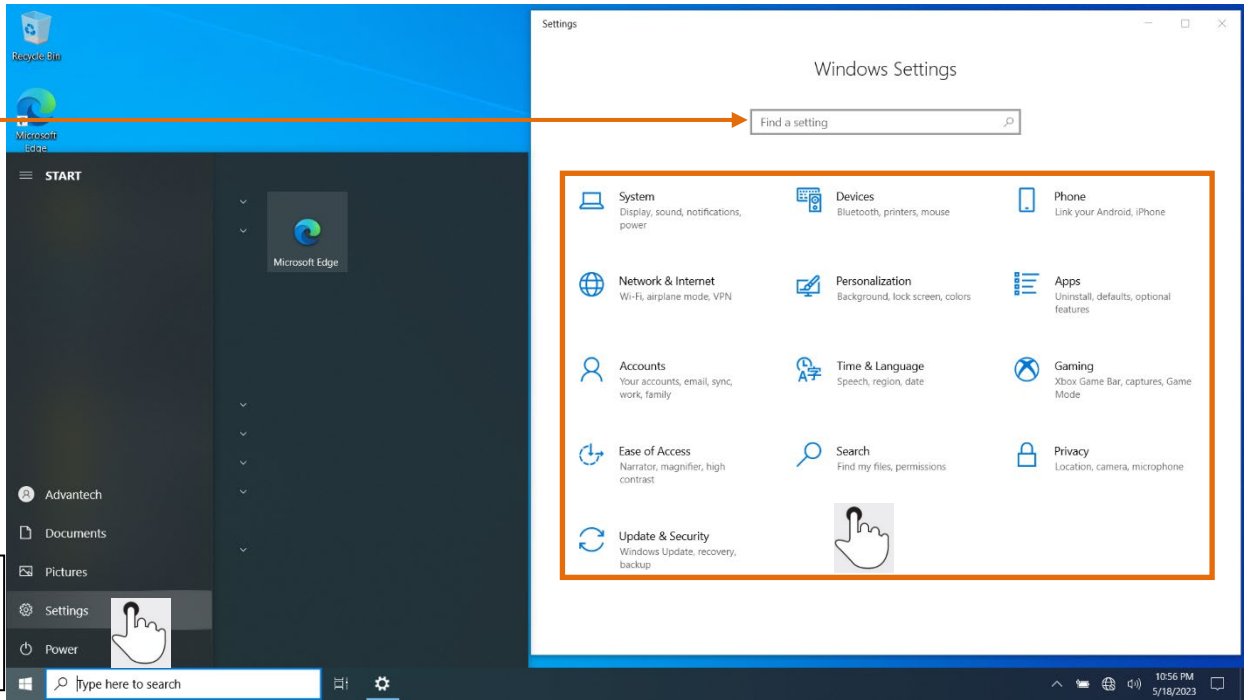
## 2.8 Using the Action Center



## 2.9 Using the Windows Setting

**Search Box**  
Faster results  
using search  
box.


**Settings**  
Personalize your  
tablet with  
Windows Settings.



# Chapter 3

Networks and  
Wireless Devices

### 3.1 Connecting to Wi-Fi Network

Click  the device scans for available Wi-Fi networks and displays the list of it. Secured networks are indicated with a lock icon.

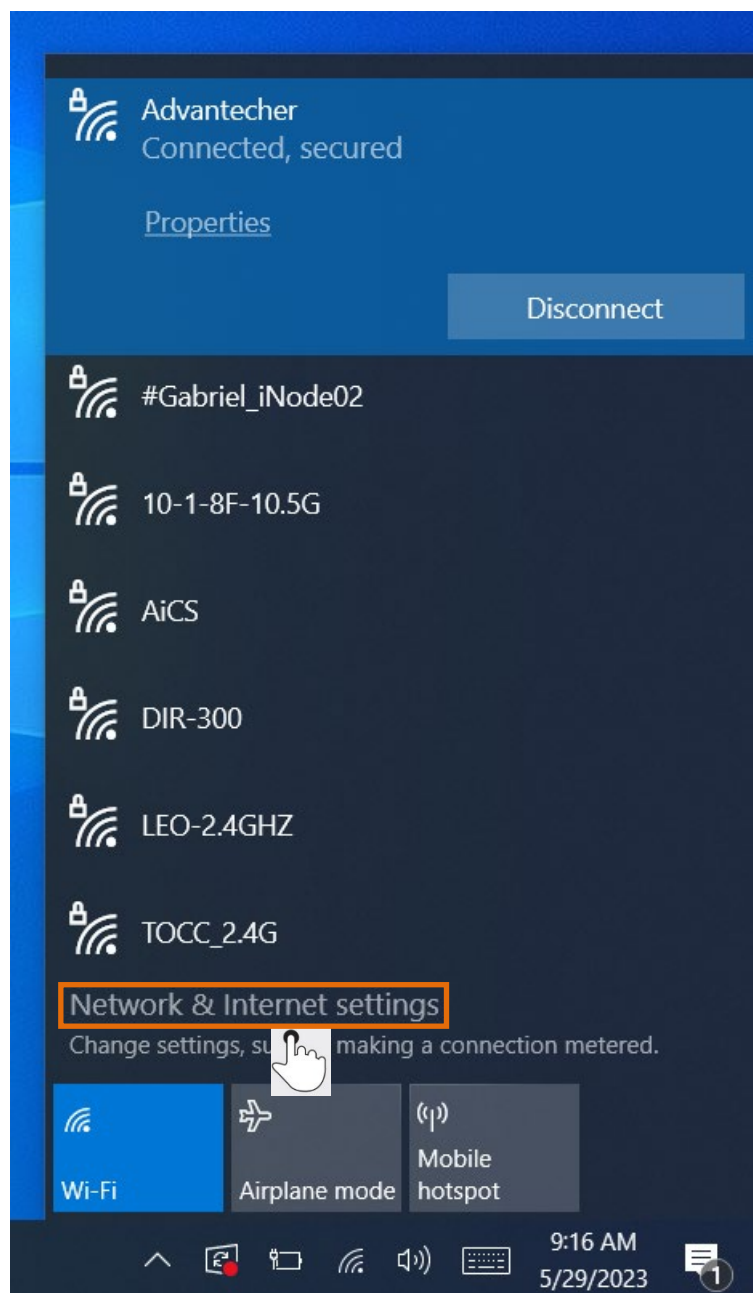
If the network is open, just click on it to connect.

If the network is secure, users need to enter a password or other credentials

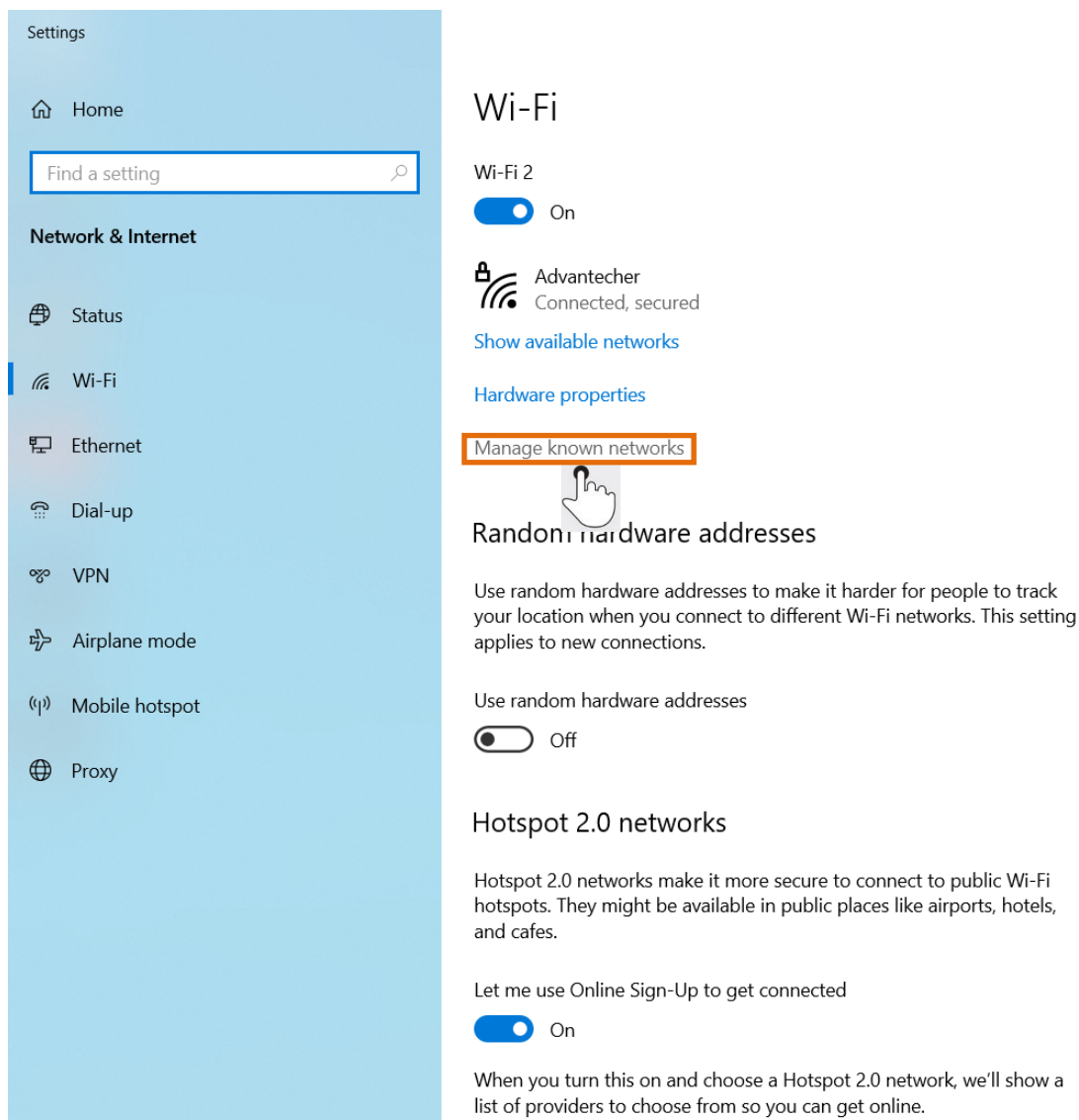


## 3.2 Adding Wi-Fi Network

1. Turn on Wi-Fi and Tap **Network & Internet settings**.

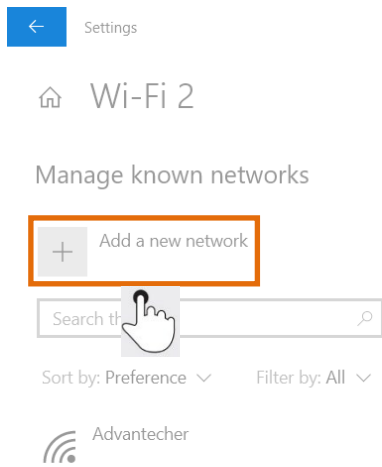


2. Click Wi-Fi, then tap **Manage known networks**.





3. Click **Add a new network**, then setup **Network name/Security type/Security key** and save the network.

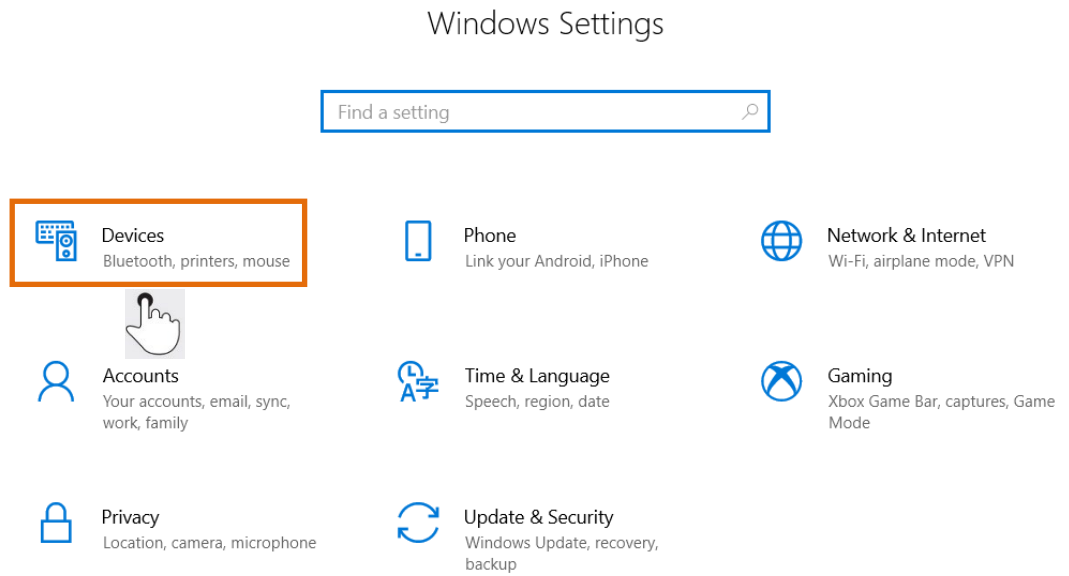


The screenshot shows a dialog box titled 'Add a new network'. It contains the following fields and options:

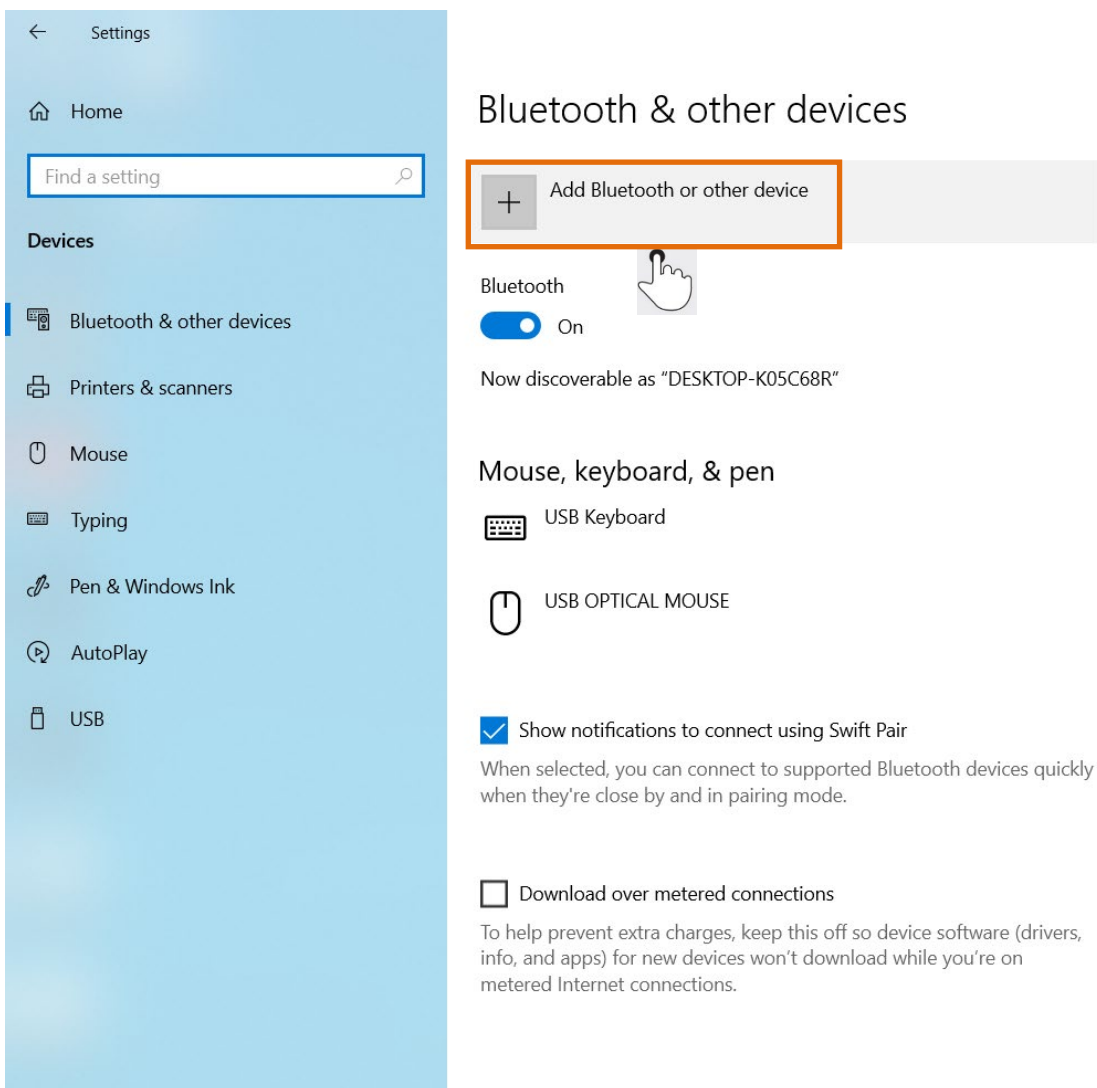
- Network name:** A text input field.
- Security type:** A dropdown menu with 'WEP' selected.
- Security key:** A text input field.
- Connect automatically
- Connect even if this network is not broadcasting
- Save** and **Cancel** buttons at the bottom.

### 3.3 Connecting Bluetooth Device to Tablet

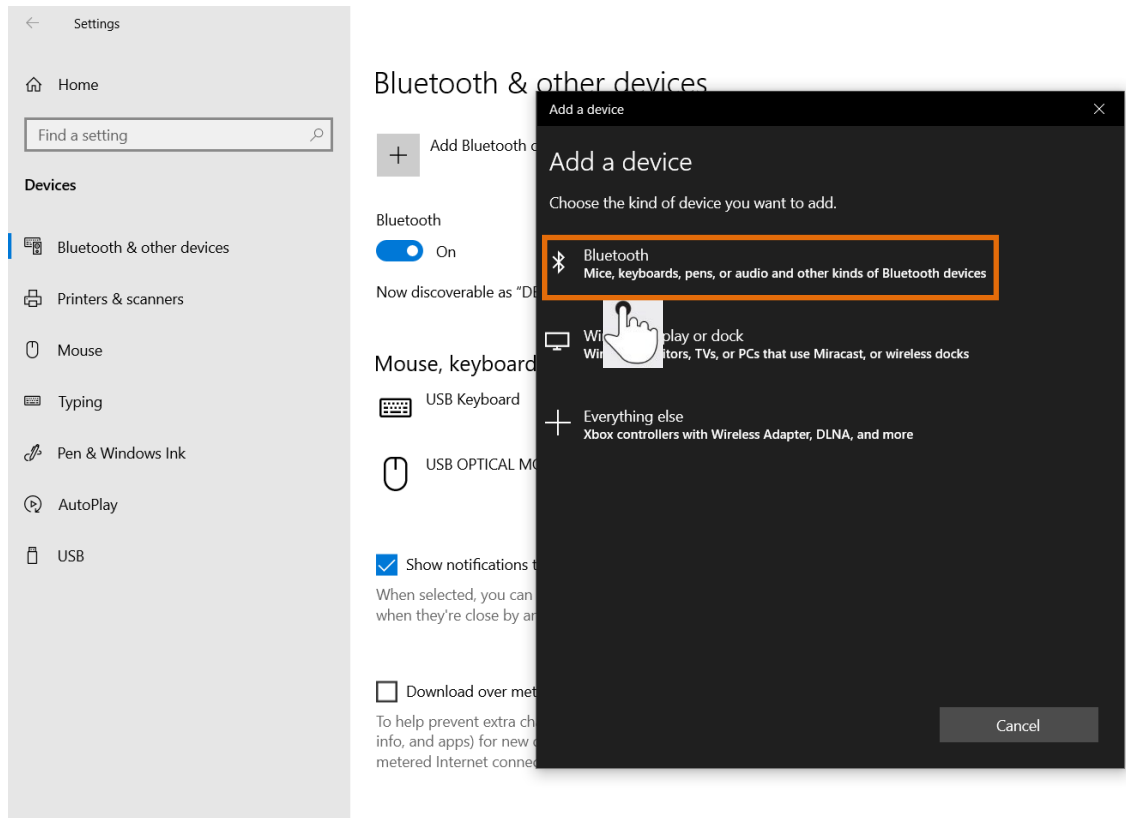
1. Go into **Windows Settings**, tap **Devices**.



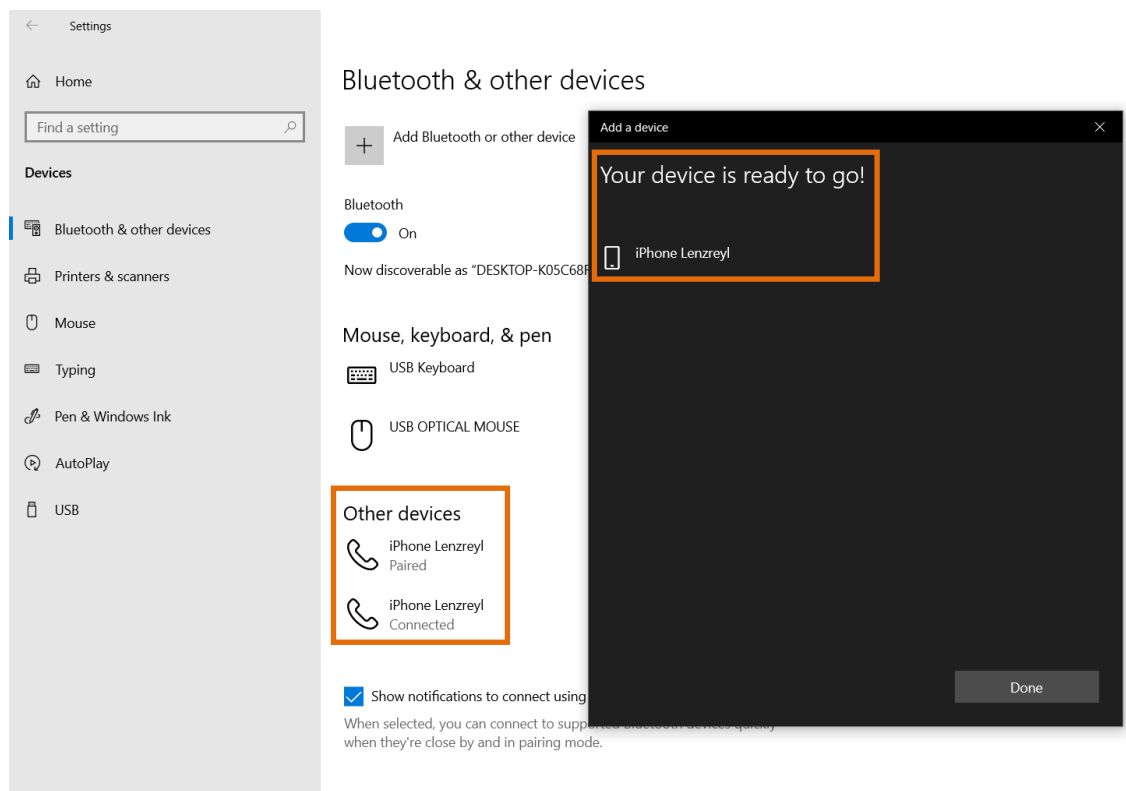
## 2. Tap **Add Bluetooth & other devices**.



### 3. Tap Bluetooth.



### 4. Tap the device you want to connect, then connected device will show in your devices.



## [www.advantech.com](http://www.advantech.com)

Please verify specifications before quoting. This guide is intended for reference purposes only.

All product specifications are subject to change without notice.

No part of this publication may be reproduced in any form or by any means, such as electronically, by photocopying, recording, or otherwise, without prior written permission from the publisher.

All brand and product names are trademarks or registered trademarks of their respective companies.

© Advantech Co., Ltd. 2022