

## Wi-Fi 2.4GHz Band

Frequency: 2462 MHz; Duty Cycle: 1:1; Room Ambient Temperature: 24.0°C; Liquid Temperature: 23.5°C

Medium parameters used:  $f = 2462.2$  MHz;  $\sigma = 2.01$  S/m;  $\epsilon_r = 52.05$ ;  $\rho = 1000$  kg/m<sup>3</sup>

DASY5 Configuration:

- Area Scan Setting - Find Secondary Maximum Within: 2.0 dB and with a peak SAR value greater than 0.0012W/kg
- Electronics: DAE4 Sn877; Calibrated: 2016/3/21
- Probe: EX3DV4 - SN3665; ConvF(7.32, 7.32, 7.32); Calibrated: 2016/5/26;
- Sensor-Surface: 1.4mm (Mechanical Surface Detection)
- Phantom: ELI 4.0; Type: QDOVA001BA; Serial: 1056

**Rear/Main Ant/802.11b/ch11/Area Scan (6x9x1):** Measurement grid: dx=12mm, dy=12mm

Maximum value of SAR (measured) = 1.21 W/kg

**Rear/Main Ant/802.11b/ch11/Zoom Scan (7x7x7)/Cube 0:** Measurement grid: dx=5mm, dy=5mm,

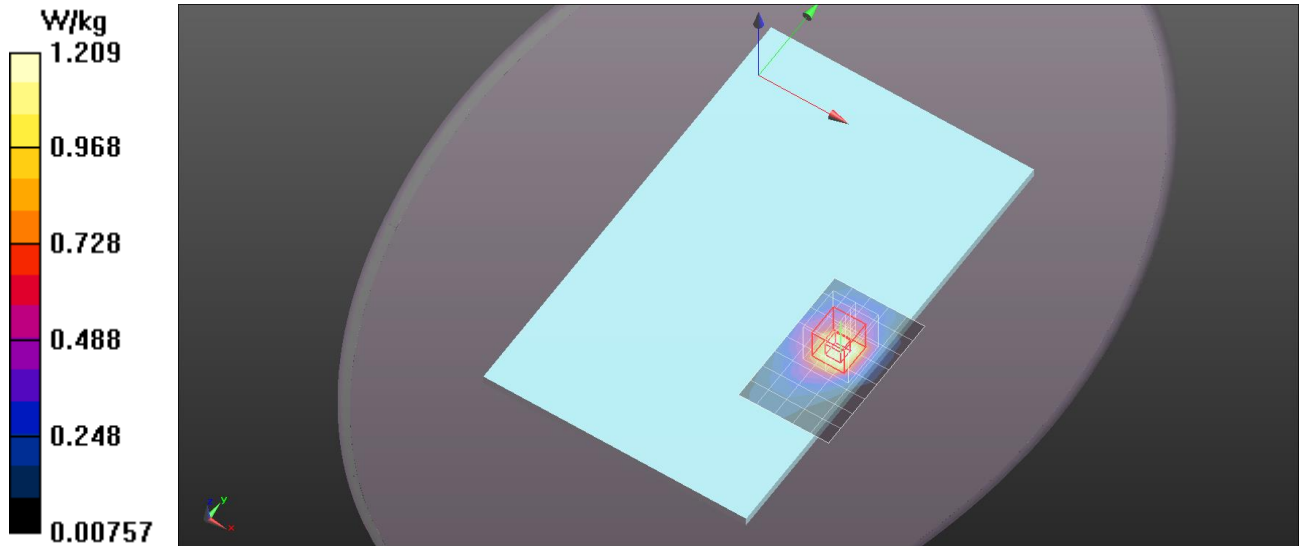
dz=5mm

Reference Value = 5.900 V/m; Power Drift = -0.09 dB

Peak SAR (extrapolated) = 1.92 W/kg

**SAR(1 g) = 0.946 W/kg; SAR(10 g) = 0.461 W/kg**

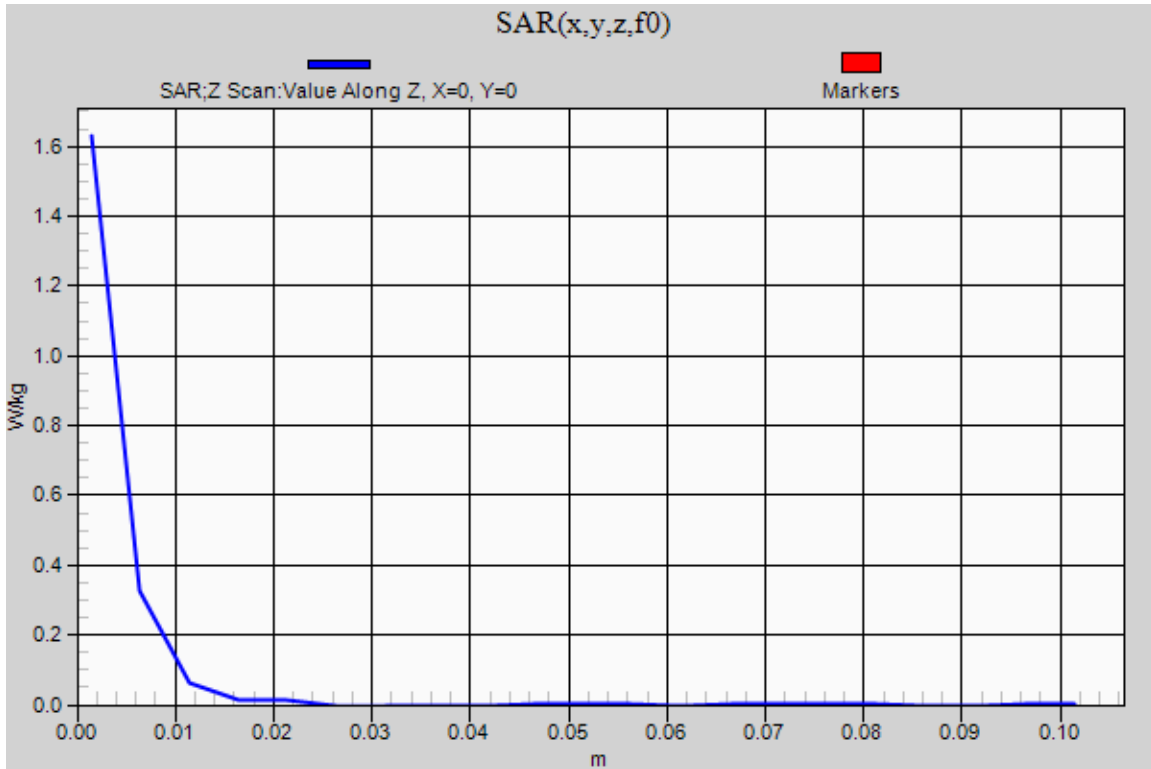
Maximum value of SAR (measured) = 1.54 W/kg



## Wi-Fi 2.4GHz Band

Frequency: 2462 MHz; Duty Cycle: 1:1

**Rear/Main Ant/802.11b/ch11/Z Scan (1x1x21):** Measurement grid: dx=20mm, dy=20mm, dz=5mm  
Maximum value of SAR (measured) = 1.64 W/kg



## Wi-Fi 2.4GHz Band

Frequency: 2462 MHz; Duty Cycle: 1:1; Room Ambient Temperature: 24.0°C; Liquid Temperature: 23.5°C

Medium parameters used:  $f = 2462.2$  MHz;  $\sigma = 2.01$  S/m;  $\epsilon_r = 52.05$ ;  $\rho = 1000$  kg/m<sup>3</sup>

DASY5 Configuration:

- Area Scan Setting - Find Secondary Maximum Within: 2.0 dB and with a peak SAR value greater than 0.0012W/kg
- Electronics: DAE4 Sn877; Calibrated: 2016/3/21
- Probe: EX3DV4 - SN3665; ConvF(7.32, 7.32, 7.32); Calibrated: 2016/5/26;
- Sensor-Surface: 1.4mm (Mechanical Surface Detection)
- Phantom: ELI 4.0; Type: QDOVA001BA; Serial: 1056

**Rear/Main Ant/802.11b/ch11 Repeat/Area Scan (6x9x1):** Measurement grid: dx=12mm, dy=12mm

Maximum value of SAR (measured) = 1.05 W/kg

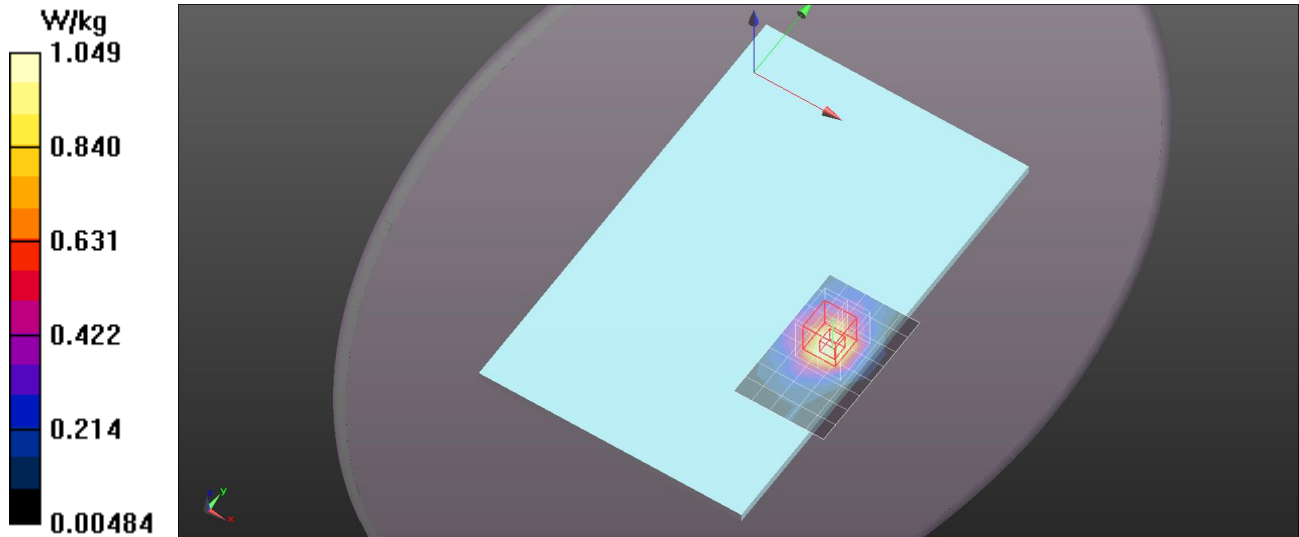
**Rear/Main Ant/802.11b/ch11 Repeat/Zoom Scan (7x7x7)/Cube 0:** Measurement grid: dx=5mm, dy=5mm, dz=5mm

Reference Value = 3.086 V/m; Power Drift = -0.03 dB

Peak SAR (extrapolated) = 1.65 W/kg

**SAR(1 g) = 0.799 W/kg; SAR(10 g) = 0.411 W/kg**

Maximum value of SAR (measured) = 1.31 W/kg



## Wi-Fi 2.4GHz Band

Frequency: 2462 MHz; Duty Cycle: 1:1

**Rear/Main Ant/802.11b/ch11 Repeat/Z Scan (1x1x21):** Measurement grid: dx=20mm, dy=20mm, dz=5mm

Maximum value of SAR (measured) = 1.42 W/kg

