

WIFI Antenna Test Report



Customer	阳华
Project	10Q15
Antenna Revision	A0
Prepared by	15993920520
Checked by	18688949385
Date:	2018. 1. 24

Purpose

This report is to measure the performance of WIFI antenna for 阳华-10Q15. The antenna operating frequency at 2.4-2.5GHz, All test data are showed as below.

Content

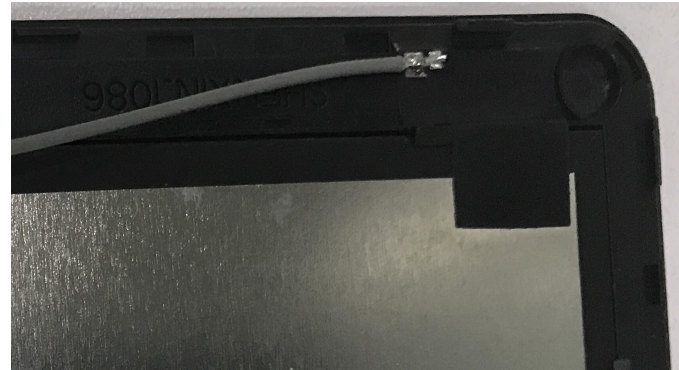
1. Product Overview & Dimension
2. Test system
3. Antenna Matching Network
4. Test Result
 - 4.1 S11 Parameter
 - 4.2 Gain & Efficiency
 - 4.3 Test coordinate
 - 4.4 2D Pattern
 - 4.5 WIFI Boot measured
 - 4.6 GPS Open Sky C/N Value Test
5. Antenna Assembly & environmental processing

1. Product Overview & Dimension

Front



Main Antenna



Back

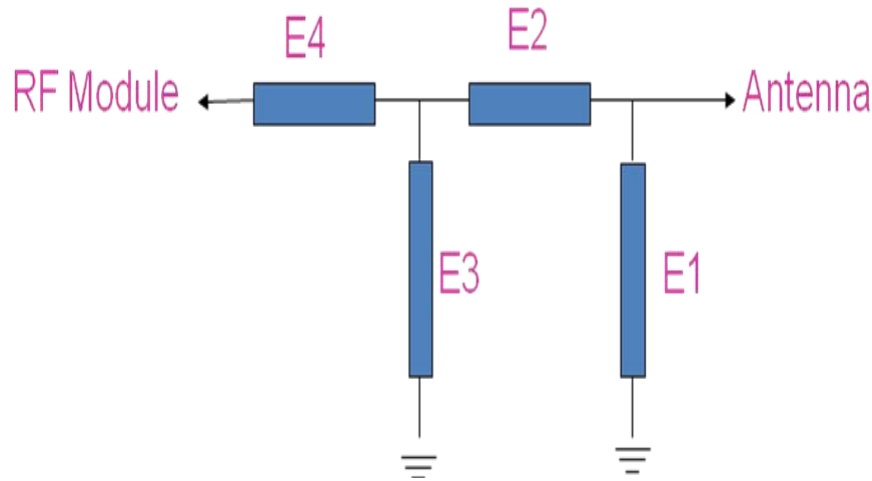


2. Test System

Sequence Number	Test Item	equipment
S parameter	VSWR	Agilent 5071C & Agilent 5062A
OTA Test	TRP&TIS	Agilent 8960 E5515C& Agilent 4438C&CMW500 &CMW270 ETS&SATIMO
Gain & Efficiency	Gain & Efficiency	ETS&SATIMO Agilent 5071C



3. Antenna Matching Network



Element	Capacitor	Inductor
E1	N/A	N/A
E2	N/A	N/A
E3	N/A	N/A
E4	N/A	N/A

PCB板端匹配电路未改动

4. Test Result

4.1 S11 Parameter-VSWR



Frequency(MHz)	2400	2450	2500
VSWR	1.39	1.09	1.28

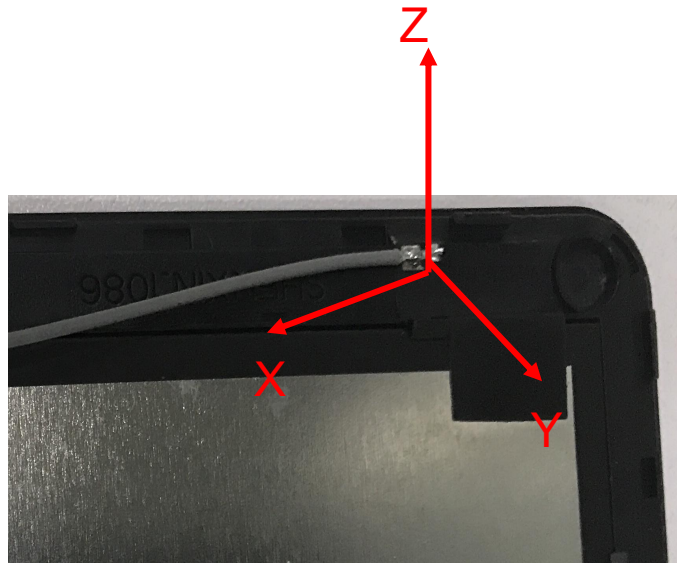
4. Test Result

4.2 Gain & Efficiency——WIFI ANT

Frequency (MHz)	Efficiency (%)	Peak GAIN (dBi)
2400	46.56	3.64
2450	45.27	3.41
2500	46.35	3.57

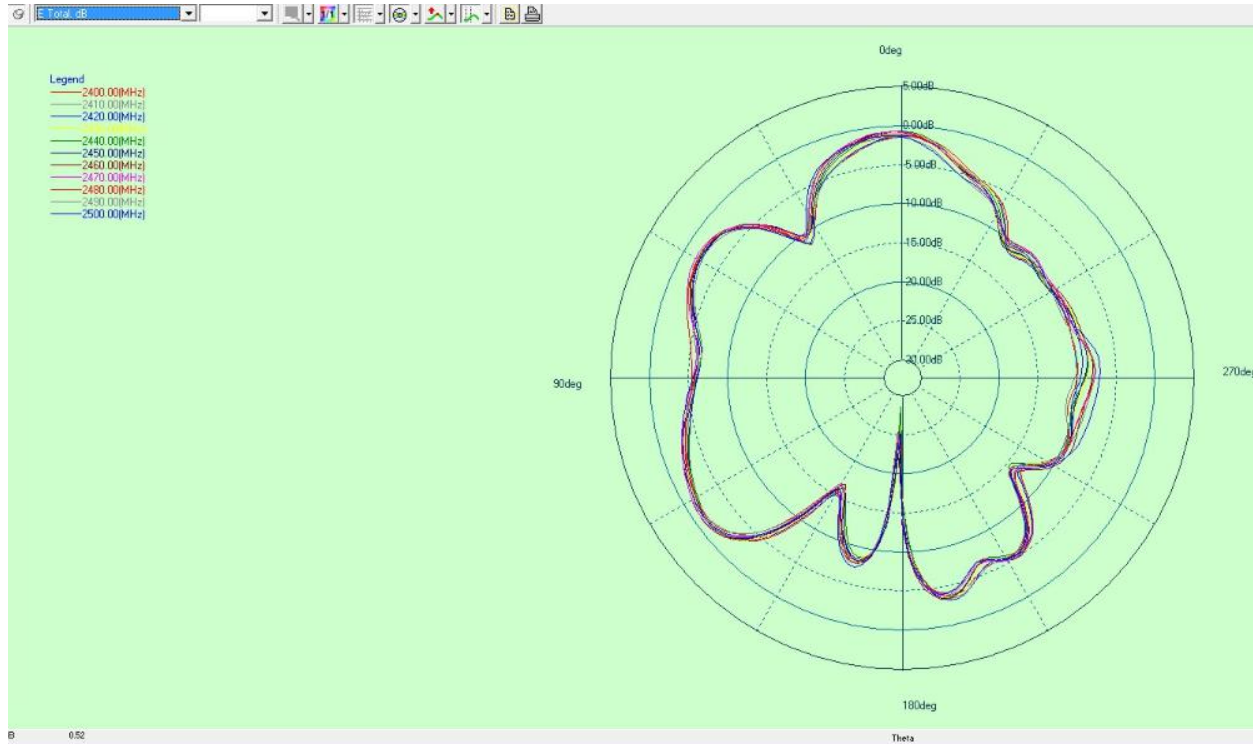
4. Test Result

4.3 Test coordinate



4. Test Result

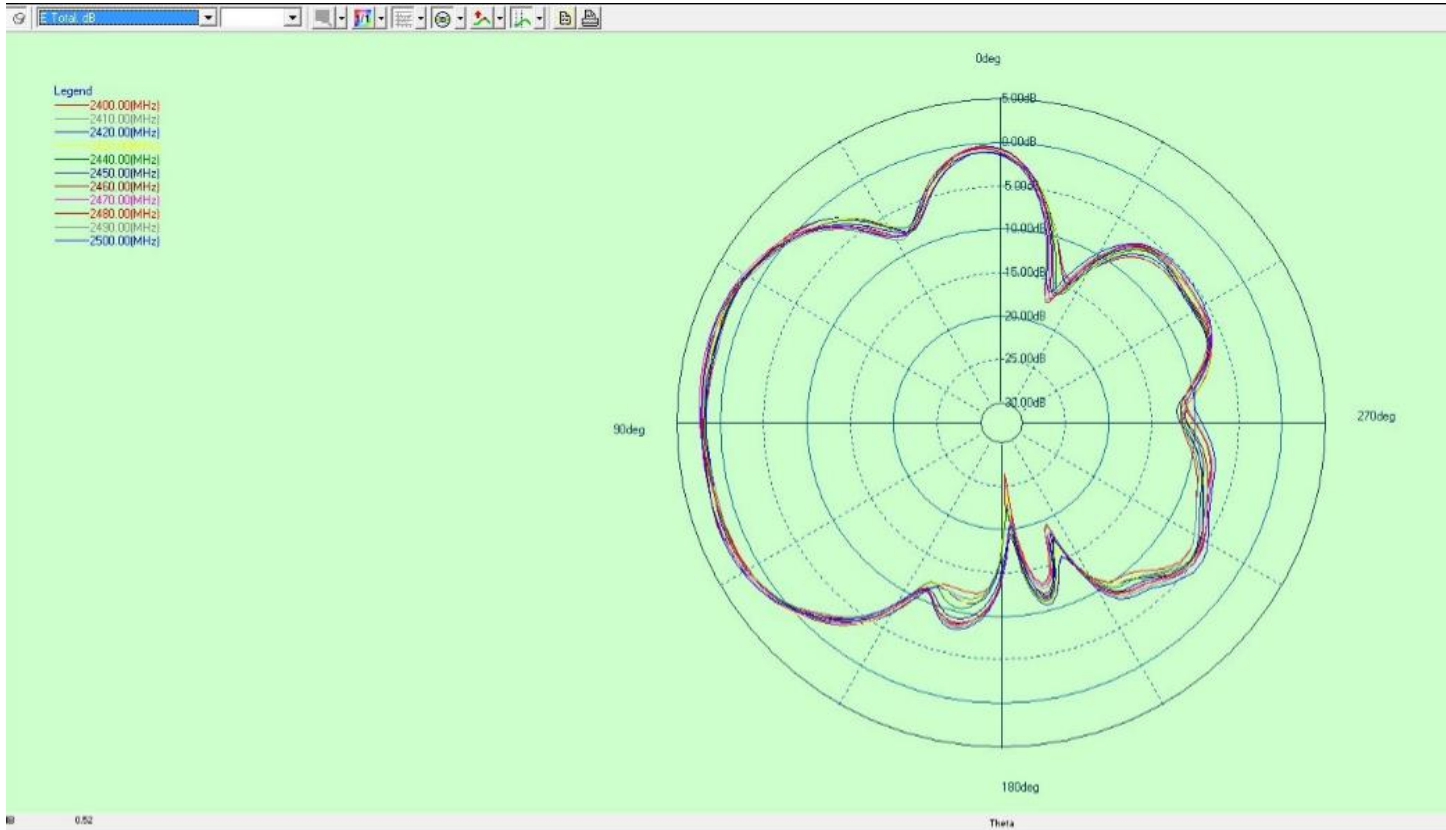
4.4 2D Pattern——WIFI ANT



X-Z Plane

4. Test Result

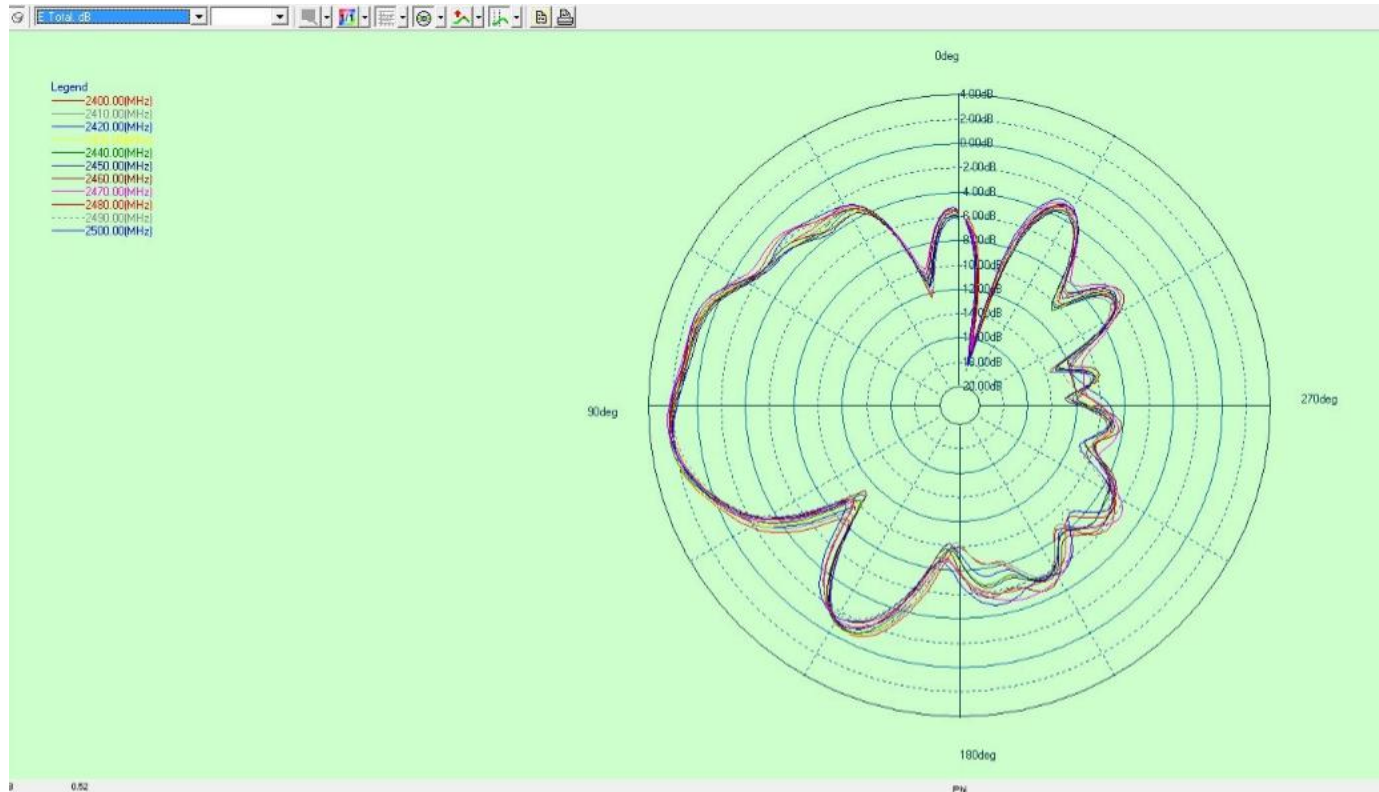
4.4 2D Pattern——WIFI ANT



Y-Z Plane

4. Test Result

4.4 2D Pattern——WIFI ANT



X-Y Plane

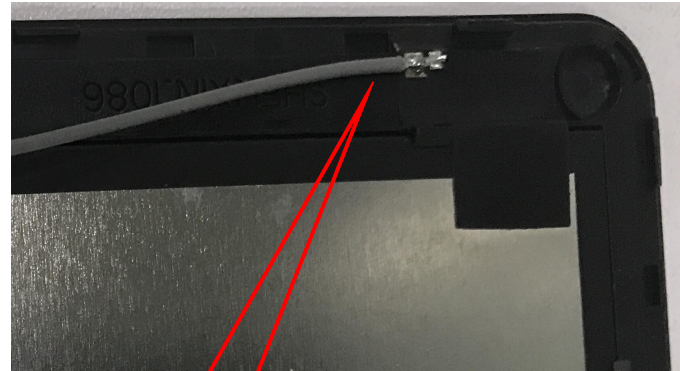
4. Test Result

4.6 WIFI Boot measured

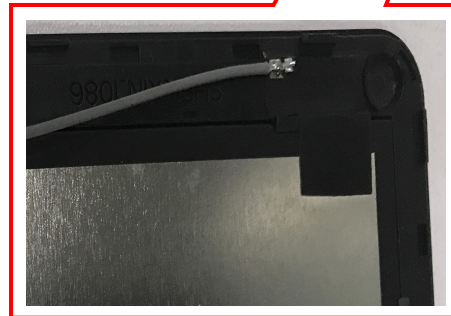


5. Antenna Assembly & environmental processing

天线安装位置请参考右图



主天线



Thank you !