



# SAR Test Report

## For

**Applicant Name:** Hena Digital Technology (Shenzhen) Co., Ltd.  
**Address:** 13F, Block B, Tairan Building Tairan 8th Road, Futian District, Shenzhen, China  
**EUT Name:** Tablet PC  
**Brand Name:** NAXA, HENA, EMERSON, SOUNDPRO, VICTOR  
**Model Number:** M17QF18M  
**Series Model Number:** NID-1400, EID-1400, VID-1400, SID-1400, NID-1400-XX, EID-1400-XX, VID-1400-XX, SID-1400-XX

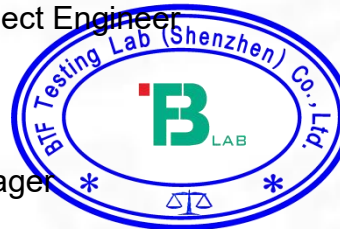
## Issued By

**Company Name:** BTF Testing Lab (Shenzhen) Co., Ltd.  
**Address:** F101, 201 and 301, Building 1, Block 2, Tantou Industrial Park, Tantou Community, Songgang Street, Bao'an District, Shenzhen, China

**Report Number:** BTF240506R00201  
**Test Standards:** FCC 47 CFR§2.1093 IEC/IEEE 62209-1528: 2020  
IEEE C95.1-2019 KDB447498 D04 KDB865664 D01  
KDB865664 D02 KDB941225 D01 KDB941225 D05  
KDB248227 D01 KDB941225 D06 KDB648474 D04  
KDB690783 D01  
**FCC ID:** M7C-EID1400  
**Test Conclusion:** Pass  
**Test Date:** 2024-05-09 to 2024-05-13  
**Date of Issue:** 2024-05-13

**Prepared By:** Amenda Zhong  
**Date:** Amenda Zhong / Project Engineer  
2024-05-13

**Approved By:** Ryan.CJ  
**Date:** Ryan.CJ / EMC Manager  
2024-05-13



*Note: All the test results in this report only related to the testing samples. Which can be duplicated completely for the legal use with approval of applicant; it shall not be reproduced except in full without the written approval of BTF Testing Lab (Shenzhen) Co., Ltd., All the objections should be raised within thirty days from the date of issue. To validate the report, you can contact us.*

Revision History		
Version	Issue Date	Revisions Content
R_V0	2024-05-13	Original
<i>Note:</i>	<i>Once the revision has been made, then previous versions reports are invalid.</i>	

## Table of Contents

1. Introduction .....	4
1.1 Identification of Testing Laboratory .....	4
1.2 Identification of the Responsible Testing Location .....	4
1.3 Laboratory Condition .....	4
1.4 Announcement .....	4
2. Product Information .....	5
2.1 Application Information .....	5
2.2 Manufacturer Information .....	5
2.3 Factory Information .....	5
2.4 General Description of Equipment under Test (EUT) .....	5
2.5 Equipment under Test Ancillary Equipment .....	5
2.6 Technical Information .....	5
3. Summary of Test Results .....	6
3.1 Test Standards .....	6
3.2 Device Category and SAR Limit .....	7
3.3 Test Result Summary .....	7
3.4 Test Uncertainty .....	8
4. Measurement System .....	10
4.1 Specific Absorption Rate (SAR) Definition .....	10
4.2 MVG SAR System .....	10
5. System Verification .....	14
5.1 Purpose of System Check .....	14
5.2 System Check Setup .....	15
6. TEST POSITION CONFIGURATIONS .....	15
6.1 Head Exposure Conditions .....	15
6.2 Body-worn Position Conditions .....	17
6.3 Hotspot Mode Exposure Position Conditions .....	18
6.4 Product Specific 10g Exposure Consideration .....	18
7. Measurement Procedure .....	19
7.1 Measurement Process Diagram .....	19
7.2 SAR Scan General Requirement .....	20
7.3 Measurement Procedure .....	21
7.4 Area & Zoom Scan Procedure .....	21
8. Conducted RF Output Power .....	22
8.1 GSM .....	22
8.2 WCDMA .....	23
8.3 LTE .....	24
8.4 Wi-Fi .....	30
8.5 Bluetooth .....	31
9. Test Exclusion Consideration .....	32
9.1 SAR Test Exclusion Consideration Table .....	32
10. Test Result .....	33
Body 1g SAR Data .....	33
11. SAR Measurement Variability .....	34
12. Simultaneous Transmission .....	35
12.1 Simultaneous Transmission Mode Considerations .....	35
12.2 Sum SAR of Simultaneous Transmission .....	35
13. Test Equipment List .....	36
ANNEX A Simulating Liquid Verification Result .....	37
ANNEX B System Check Result .....	37
ANNEX C Test Data .....	52
ANNEX D SAR Test Setup Photos .....	74
ANNEX E EUT External and Internal Photos .....	75
ANNEX F Calibration Information .....	75

## 1. Introduction

### 1.1 Identification of Testing Laboratory

Company Name:	BTF Testing Lab (Shenzhen) Co., Ltd.
Address:	F101, 201 and 301, Building 1, Block 2, Tantou Industrial Park, Tantou Community, Songgang Street, Bao'an District, Shenzhen, China
Phone Number:	+86-0755-23146130
Fax Number:	+86-0755-23146130

### 1.2 Identification of the Responsible Testing Location

Test Location:	BTF Testing Lab (Shenzhen) Co., Ltd.
Address:	F101, 201 and 301, Building 1, Block 2, Tantou Industrial Park, Tantou Community, Songgang Street, Bao'an District, Shenzhen, China
Description:	All measurement facilities used to collect the measurement data are located at F101,201 and 301, Building 1, Block 2, Tantou Industrial Park, Tantou Community, Songgang Street, Bao'an District, Shenzhen, China
FCC Registration Number	518915
Designation Number	CN1330

### 1.3 Laboratory Condition

Ambient Temperature:	21°C to 25°C
Ambient Relative Humidity:	48% to 59%
Ambient Pressure:	100 kPa to 102 kPa

### 1.4 Announcement

- (1) The test report reference to the report template version v0.
- (2) The test report is invalid if not marked with the signatures of the persons responsible for preparing, reviewing and approving the test report.
- (3) The test report is invalid if there is any evidence and/or falsification.
- (4) This document may not be altered or revised in any way unless done so by BTF and all revisions are duly noted in the revisions section.
- (5) Content of the test report, in part or in full, cannot be used for publicity and/or promotional purposes without prior written approval from the laboratory.
- (6) The laboratory is only responsible for the data released by the laboratory, except for the part provided by the applicant.

## 2. Product Information

### 2.1 Application Information

Company Name:	Hena Digital Technology (Shenzhen) Co., Ltd.
Address:	13F, Block B, Tairan Building Tairan 8th Road, Futian District, Shenzhen, China

### 2.2 Manufacturer Information

Company Name:	Hena Digital Technology (Shenzhen) Co., Ltd.
Address:	13F, Block B, Tairan Building Tairan 8th Road, Futian District, Shenzhen, China

### 2.3 Factory Information

Company Name:	Hena Digital Technology (Shenzhen) Co., Ltd.
Address:	13F, Block B, Tairan Building Tairan 8th Road, Futian District, Shenzhen, China

### 2.4 General Description of Equipment under Test (EUT)

EUT Name	Tablet PC
Under Test Model Name	M17QF18M
Series Model Name	NID-1400, EID-1400, VID-1400, SID-1400, NID-1400-XX, EID-1400-XX, VID-1400-XX, SID-1400-XX
Description of Model name differentiation	All models are same with electrical parameters and internal circuit structure, but only differ in appearance color and model name. (this information provided by the customer)
Software Version	A75_user_20240409
Hardware Version	V1.0
Sample No.	BTFSN240506014/1 E1

### 2.5 Equipment under Test Ancillary Equipment

Ancillary Equipment 1	Rechargeable Battery	
	Capacity	8000mAh
	Rated Voltage	3.8V

### 2.6 Technical Information

Network and Wireless connectivity	2G Network GSM/GPRS/EGPRS 850/1900 3G Network WCDMA/HSDPA/HSUPA Band 2/5 4G Network FDD LTE Band 2/4/5/12 2.4G WIFI 802.11b, 802.11g, 802.11n(HT20/40) 5G WIFI 802.11a, 802.11n(HT20/40), 802.11ac(VHT20/40/80) Bluetooth (EDR+BLE)
-----------------------------------	--

The requirement for the following technical information of the EUT was tested in this report:

Operating Mode	GSM, WCDMA, LTE, WLAN, Bluetooth		
Frequency Range	GSM 850	TX: 824 ~ 849 MHz	RX: 869 ~ 894 MHz
	GSM 1900	TX: 1850 ~ 1910 MHz	RX: 1930 ~ 1990 MHz
	WCDMA Band 2	TX: 1850 ~ 1910 MHz	RX: 1930 ~ 1990 MHz
	WCDMA Band 5	TX: 824 ~ 849 MHz	RX: 869 ~ 894 MHz
	LTE Band 2	TX: 1850 ~ 1910 MHz	RX: 1930 ~ 1990 MHz
	LTE Band 4	TX: 1710 ~ 1755 MHz	RX: 2110 ~ 2155 MHz
	LTE Band 5	TX: 824 ~ 849 MHz	RX: 869 ~ 894 MHz
	LTE Band 12	TX: 698 ~ 716 MHz	RX: 728 ~ 746 MHz
	802.11b/g/n(HT20)	2412 ~ 2462 MHz	
	802.11n(HT40)	2422 ~ 2452 MHz	
	802.11a /802.11n(HT20/40) /802.11ac(VHT20/40/80)	5150 ~ 5250 MHz	
	Bluetooth	2402 ~ 2480 MHz	
Antenna Type	WWAN: FPC Antenna WLAN: FPC Antenna BT: FPC Antenna		
Hotspot Function	Support		
Power Reduction	Not Support		
Exposure Category	General Population/Uncontrolled exposure		
EUT Stage	Portable Device		
Product	Type		
	<input type="checkbox"/> Production unit		<input checked="" type="checkbox"/> Identical prototype

### 3. Summary of Test Results

#### 3.1 Test Standards

No.	Identity	Document Title
1	47 CFR Part 2.1093	Radiofrequency radiation exposure evaluation: portable devices
2	IEC/IEEE 62209-1528: 2020	Measurement procedure for the assessment of specific absorption rate of human exposure to radio frequency fields from hand-held and body-mounted wireless communication devices - Part 1528: Human models, instrumentation, and procedures (Frequency range of 4 MHz to 10 GHz)
3	IEEE C95.1-2019	IEEE Standard for Safety Levels with Respect to Human Exposure to Electric, Magnetic, and Electromagnetic Fields, 0 Hz to 300 GHz
4	KDB 447498 D04	Interim General RF Exposure Guidance v01
5	KDB 865664 D01	SAR measurement 100MHz to 6GHz v01r04
6	KDB 865664 D02	RF Exposure Reporting v01r02
7	KDB941225 D01	3G SAR Procedures v03r01
8	KDB941225 D05	SAR for LTE Devices v02r05
9	KDB248227 D01	802.11 Wi-Fi SAR v02r02
10	KDB941225 D06	Hotspot Mode v02r01
11	KDB648474 D04	Handset SAR v01r03
12	KDB690783 D01	SAR Listings on Grant v01r03

### 3.2 Device Category and SAR Limit

This device belongs to portable device category because its radiating structure is allowed to be used within 20 centimeters of the body of the user. Limit for General Population/Uncontrolled exposure should be applied for this device, it is 1.6 W/kg as averaged over any 1 gram of tissue.

Body Position	SAR Value (W/Kg)	
	General Population/ Uncontrolled Exposure	Occupational/ Controlled Exposure
Whole-Body SAR (averaged over the entire body)	0.08	0.4
Partial-Body SAR (averaged over any 1 gram of tissue)	1.60	8.0
SAR for hands, wrists, feet and ankles (averaged over any 10 grams of tissue)	4.0	20.0

NOTE:  
**General Population/Uncontrolled Exposure:** Locations where there is the exposure of individuals who have no knowledge or control of their exposure. General population/uncontrolled exposure limits are applicable to situations in which the general public may be exposed or in which persons who are exposed as a consequence of their employment may not be made fully aware of the potential for exposure or cannot exercise control over their exposure. Members of the general public would come under this category when exposure is not employment- related; for example, in the case of a wireless transmitter that exposes persons in its vicinity.  
**Occupational/Controlled Exposure:** Locations where there is exposure that may be incurred by persons who are aware of the potential for exposure, In general, occupational/controlled exposure limits are applicable to situations in which persons are exposed as a consequence of their employment, who have been made fully aware of the potential for exposure and can exercise control over their exposure. This exposure category is also applicable when the exposure is of a transient nature due to incidental passage through a location where the exposure levels may be higher than the general population/uncontrolled limits, but the exposed person is fully aware of the potential for exposure and can exercise control over his or her exposure by leaving the area or by some other appropriate means.

### 3.3 Test Result Summary

The maximum results of Specific Absorption Rate (SAR) found during test as bellows:

<Highest Reported standalone SAR Summary>

Exposure Position	Frequency Band	Reported SAR (W/kg)	Equipment Class	Highest Reported SAR (W/kg)
Body 1-g SAR (0 mm Gap)	GSM 850	0.778	PCB	0.799
	GSM 1900	<b>0.799</b>		
	WCDMA Band II	0.731		
	WCDMA Band V	0.774		
	LTE Band 2	0.796		
	LTE Band 4	0.786		
	LTE Band 5	0.282		
	LTE Band 12	0.368		
	WLAN 2.4 GHz	0.263	DTS	
	WLAN 5.2 GHz	0.216	NII	
WLAN 5.8 GHz	0.192			

This device is in compliance with Specific Absorption Rate(SAR) for general population/uncontrolled exposure limits (1.6 W/kg) specified in FCC47 CFR part 2(2.1093) and ANSI/IEEE C95.1-2019, and had been tested in accordance with the measurement methods and procedures specified in IEC/IEEE 62209-1528: 2020.

<Highest Reported Simultaneous SAR>

Exposure Position	Simultaneous Configuration	Highest Reported Simultaneous Transmission SAR (W/kg)	Limit (W/kg)	Verdict
Body 1-g SAR (0 mm Gap)	GSM 1900 +2.4G WIFI	1.062	1.6	Pass

### 3.4 Test Uncertainty

#### 3.4.1 Measurement uncertainty evaluation for SAR test

#### Measurement uncertainty evaluation for SAR test (300MHz to 6GHz)

Uncertainty Component	Tol (+-%)	Prob. Dist.	Div.	Ci (1g)	Ci (10g)	1g Ui (+-%)	10 g Ui (+-%)	Vi veff
<b>Measurement System</b>								
Probe calibration	5.8	N	1	1	1	5.80	5.80	∞
Axial Isotropy	3.5	R	√3	√0.5	√0.5	1.43	1.43	∞
Hemispherical Isotropy	5.9	R	√3	√0.5	√0.5	2.41	2.41	∞
Boundary effect	1.0	R	√3	1	1	0.58	0.58	∞
Linearity	4.7	R	√3	1	1	2.71	2.71	∞
System detection limits	1.0	R	√3	1	1	0.58	0.58	∞
Modulation response	3.0	R	√3	1	1	1.73	1.73	∞
Readout Electronics	0.5	N	1	1	1	0.50	0.50	∞
Response Time	0	R	√3	1	1	0.00	0.00	∞
Integration Time	1.4	R	√3	1	1	0.81	0.81	∞
RF ambient Conditions - Noise	3.0	R	√3	1	1	1.73	1.73	∞
RF ambient Conditions - Reflections	3.0	R	√3	1	1	1.73	1.73	∞
Probe positioner Mechanical Tolerance	1.4	R	√3	1	1	0.81	0.81	∞
Probe positioning with respect to Phantom Shell	1.4	R	√3	1	1	0.81	0.81	∞
Extrapolation, interpolation and integration Algorithms for Max. SAR Evaluation	2.3	R	√3	1	1	1.33	1.33	∞
<b>Test sample Related</b>								
Test sample positioning	2.6	N	1	1	1	2.60	2.60	11
Device Holder Uncertainty	3.0	N	1	1	1	3.00	3.00	7
Output power Variation - SAR drift measurement	5.0	R	√3	1	1	2.89	2.89	∞
SAR scaling	2.0	R	√3	1	1	1.15	1.15	∞
<b>Phantom and Tissue Parameters</b>								
Phantom Shell Uncertainty - Shape, Thickness and Permittivity	4	R	√3	1	1	2.31	2.31	∞
Uncertainty in SAR correction for deviation in permittivity and conductivity	2.0	N	1	1	0.84	2.00	1.68	∞
Liquid conductivity measurement	4.0	N	1	0.78	0.71	3.12	2.84	5
Liquid permittivity measurement	5.0	N	1	0.23	0.26	1.15	1.30	5
Liquid Conductivity - Temperature Uncertainty	2.5	R	√3	0.78	0.71	1.13	1.02	∞
Liquid permittivity - Temperature Uncertainty	2.5	R	√3	0.23	0.26	0.33	0.38	∞
Combined Standard Uncertainty		RSS				10.47	10.34	
Expanded Uncertainty (95% Confidence interval)		k				20.95	20.69	

\* This uncertainty represents an expanded uncertainty expressed at approximately the 95% confidence level using a coverage factor of k=2.



## 3.4.2 Measurement uncertainty evaluation for system check

Uncertainty Component	Tol (+-%)	Prob. Dist.	Div.	Ci (1g)	Ci (10 g)	1g Ui (+-%)	10 g Ui (+-%)	Vi veff
<b>Measurement System</b>								
Probe calibration	5.8	N	1	1	1	5.80	5.80	∞
Axial Isotropy	3.5	R	√3	1	1	2.02	2.02	∞
Hemispherical Isotropy	5.9	R	√3	0	0	0.00	0.00	∞
Boundary effect	1	R	√3	1	1	0.58	0.58	∞
Linearity	4.7	R	√3	1	1	2.71	2.71	∞
System detection limits	1	R	√3	1	1	0.58	0.58	∞
Modulation response	0	N	√3	0	0	0.00	0.00	∞
Readout Electronics	0.5	N	1	1	1	0.50	0.50	∞
Response Time	0	R	√3	0	0	0.00	0.00	∞
Integration Time	1.4	R	√3	0	0	0.00	0.00	∞
RF ambient Conditions - Noise	3	R	√3	1	1	1.73	1.73	∞
RF ambient Conditions - Reflections	3	R	√3	1	1	1.73	1.73	∞
Probe positioner Mechanical Tolerance	1.4	R	√3	1	1	0.81	0.81	∞
Probe positioning with respect to Phantom Shell	1.4	R	√3	1	1	0.81	0.81	∞
Extrapolation, interpolation and integration Algorithms for Max. SAR Evaluation	2.3	R	√3	1	1	1.33	1.33	∞
<b>Dipole</b>								
Deviation of experimental source from numerical source	5	N	1	1	1	5.00	5.00	∞
Input Power and SAR drift measurement	0.5	R	√3	1	1	0.29	0.29	∞
Dipole Axis to Liquid Dist.	2.0	R	√3	1	1	1.15	1.15	∞
<b>Phantom and Tissue Parameters</b>								
Phantom Shell Uncertainty - Shape, Thickness and Permittivity	4	R	√3	1	1	2.31	2.31	∞
Uncertainty in SAR correction for deviation in permittivity and conductivity	2.0	N	1	1	0.84	2.00	1.68	∞
Liquid conductivity measurement	4	N	1	0.78	0.71	3.12	2.84	5
Liquid permittivity measurement	5.0	N	1	0.23	0.26	1.15	1.30	5
Liquid Conductivity - Temperature Uncertainty	2.5	R	√3	0.78	0.71	1.13	1.02	∞
Liquid permittivity - Temperature Uncertainty	2.5	R	√3	0.23	0.26	0.33	0.38	∞
Combined Standard Uncertainty		RSS				10.16	10.03	
Expanded Uncertainty (95% Confidence interval)		k				20.32	20.06	

## 4. Measurement System

### 4.1 Specific Absorption Rate (SAR) Definition

SAR is related to the rate at which energy is absorbed per unit mass in an object exposed to a radio field. The SAR distribution in a biological body is complicated and is usually carried out by experimental techniques or numerical modeling. The standard recommends limits for two tiers of groups, occupational/controlled and general population/uncontrolled, based on a person’s awareness and ability to exercise control over his or her exposure. In general, occupational/controlled exposure limits are higher than the limits for general population/uncontrolled.

The SAR definition is the time derivative (rate) of the incremental energy (dW) absorbed by (dissipated in) an incremental mass (dm) contained in a volume element (dv) of a given density (ρ). The equation description is as below:

$$SAR = \frac{d}{dt} \left( \frac{dW}{dm} \right) = \frac{d}{dt} \left( \frac{dW}{\rho dv} \right)$$

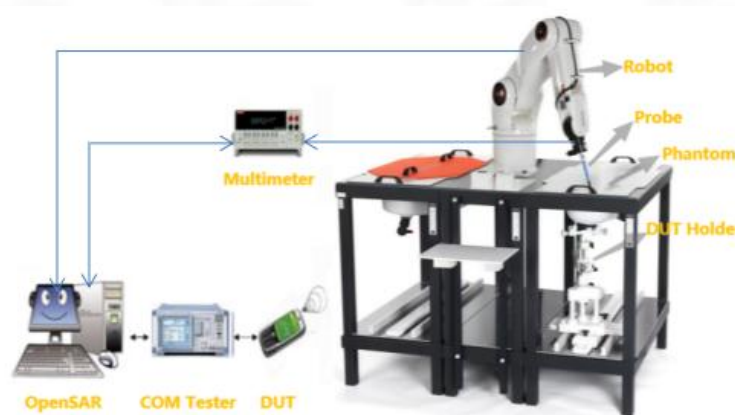
SAR is expressed in units of Watts per kilogram (W/kg) SAR measurement can be related to the electrical field in the tissue by

$$SAR = \frac{\sigma E^2}{\rho}$$

Where: σ is the conductivity of the tissue,  
ρ is the mass density of the tissue and E is the RMS electrical field strength.

### 4.2 MVG SAR System

#### 4.2.1 SAR system diagram



#### 4.2.2 Robot



- A standard high precision 6-axis robot (Denso) with teaches pendant with Scanning System
- It must be able to scan all the volume of the phantom to evaluate the tridimensional distribution of SAR.
  - Must be able to set the probe orthogonal of the surface of the phantom ( $\pm 30^\circ$ ).
  - Detects stresses on the probe and stop itself if necessary to keep the integrity of the probe.

#### 4.2.3 E-Field Probe

For the measurements, the Specific Dosimetric SSE2 E-Field Probe with following specifications is used:

- Dynamic range: 0.01-100 W/kg
- Tip diameter: 2mm for SSE2
- Distance between probe tip and sensor centre: 1mm for SSE2
- Distance between sensor centre and the inner phantom surface: 2mm for  $f \geq 4\text{GHz}$ .
- Probe linearity:  $< 0.25\text{dB}$ .
- Axial Isotropy:  $< 0.25\text{dB}$ .
- Spherical Isotropy:  $< 0.50\text{dB}$ .
- Calibration range: 150 to 6000 MHz for head & body simulating liquid
- Angle between probe axis (evaluation axis) and surface normal line: less than  $20^\circ$ .



#### 4.2.4 Phantoms

##### **SAM Phantom**

For the measurements the Specific Anthropomorphic Mannequin (SAM) defined by the IEEE SCC-34/SC2 group is used. The probe scanning of the E-Field is done in the 2 halves of the normalized head. The normalized shape of the phantom corresponds to the dimensions of 90% of an adult head size. It enables the dosimetric evaluation of left and right-hand phone usage and includes an additional flat phantom part for the simplified body performance check. The phantom set-up includes a cover, which prevents the evaporation of the liquid.



**SAM Phantom**

The thickness of the phantom amounts to  $2\text{ mm} \pm 0.2\text{ mm}$ . The materials for the phantom do not affect the radiation of the device under test (DUT) :  $\epsilon_r' < 5$   
The head is filled with tissue simulating liquid. The hand do not have to be modeled.

**TWIN SAM phantom**

	Mechanical	Electrical	
Overall thickness	$2 \pm 0.2\text{ mm}$ (except ear area)	Relative permittivity	3.4
Dimensions	1000 mm(L) x 500 mm(W) x 200 mm(H)	Loss tangent	0.02
Maximum volume	27 L		
Material	Fiberglass based		

**ELLIPTICAL Phantom**

The phantom is for Body performance check filled with tissue-equivalent liquid to a depth of at least 150 mm, whose shell material is resistant to damage or reaction with tissue-equivalent liquid chemicals.



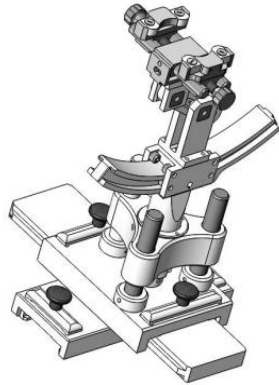
**ELLI Phantom**

The shape of the phantom is an ellipse with length  $600\text{ mm} \pm 5\text{ mm}$  and width  $400\text{ mm} \pm 5\text{ mm}$ . The phantom shell is made of low-loss and low-permittivity material, having loss tangent  $\tan \delta \leq 0.05$  and relative permittivity:  
 $\epsilon_r' \leq 5$  for  $f \leq 3\text{ GHz}$   
 $3 \leq \epsilon_r' \leq 5$  for  $f > 3\text{ GHz}$   
 The thickness of the bottom-wall of the flat phantom is 2.0 mm with a tolerance of  $\pm 0.2\text{ mm}$ .

**Technical & mechanical characteristics**

Shell thickness	$2\text{ mm} \pm 0.2\text{ mm}$
Filling volume	25 L
Dimensions	600 mm x 400 mm x 200mm
Permittivity	4.4
Loss tangent	0.017

#### 4.2.5 Device Holder



System Material	Permittivity	Loss tangent
Delrin	3.7	0.005

*(The positioning system allows obtaining cheek and tilting position with a very good accuracy. In compliance with CENELEC, the tilt angle uncertainty is lower than 1°.)*

System Material	Permittivity	Loss tangent
PMMA	2.9	0.028

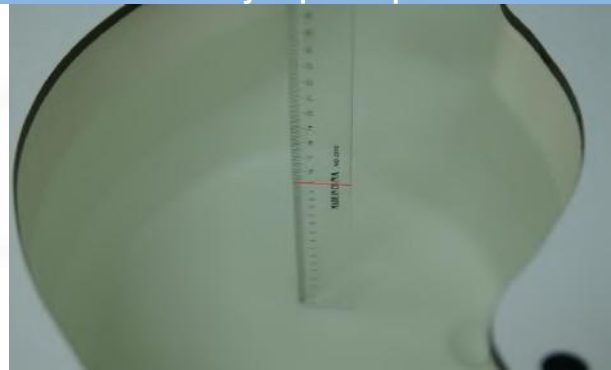
#### 4.2.6 Simulating Liquid

For SAR measurement of the field distribution inside the phantom, the phantom must be filled with homogeneous tissue simulating liquid to a depth of at least 15 cm. For head SAR testing, the liquid height from the ear reference point (ERP) of the phantom to the liquid top surface is larger than 15 cm. For body SAR testing, the liquid height from the center of the flat phantom to the liquid top surface is larger than 15 cm. The nominal dielectric values of the tissue simulating liquids in the phantom and the tolerance of 5%.

Head Liquid Depth



Body Liquid Depth



The following table gives the recipes for tissue simulating liquid and the theoretical Conductivity/Permittivity.

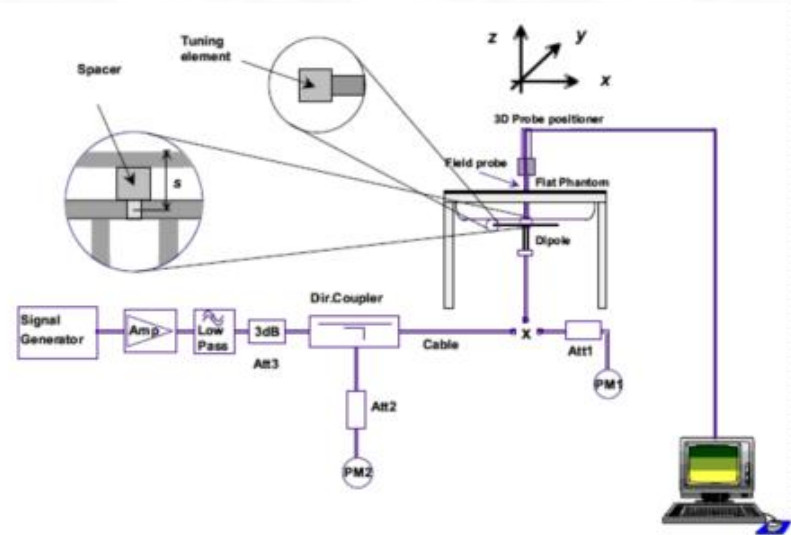
Head (Reference IEEE1528)								
Frequency (MHz)	Water (%)	Sugar (%)	Cellulose (%)	Salt (%)	Preventol (%)	DGBE (%)	Conductivity $\sigma$ (S/m)	Permittivity $\epsilon$
750	41.1	57.0	0.2	1.4	0.2	0	0.89	41.9
835	40.3	57.9	0.2	1.4	0.2	0	0.90	41.5
900	40.3	57.9	0.2	1.4	0.2	0	0.97	41.5
1800, 1900, 2000	55.2	0	0	0.3	0	44.5	1.4	40.0
2450	55.0	0	0	0.1	0	44.9	1.80	39.2
2600	54.9	0	0	0.1	0	45.0	1.96	39.0
Frequency (MHz)	Water (%)	Hexyl Carbitol (%)			Triton X-100 (%)		Conductivity $\sigma$ (S/m)	Permittivity $\epsilon$
5200	62.52	17.24			17.24		4.66	36.0
5800	62.52	17.24			17.24		5.27	35.3
Body (From instrument manufacturer)								
Frequency (MHz)	Water (%)	Sugar (%)	Cellulose (%)	Salt (%)	Preventol (%)	DGBE (%)	Conductivity $\sigma$ (S/m)	Permittivity $\epsilon$
750	51.7	47.2	0	0.9	0.1	0	0.96	55.5
835	50.8	48.2	0	0.9	0.1	0	0.97	55.2
900	50.8	48.2	0	0.9	0.1	0	1.05	55.0
1800, 1900, 2000	70.2	0	0	0.4	0	29.4	1.52	53.3
2450	68.6	0	0	0.1	0	31.3	1.95	52.7
2600	68.2	0	0	0.1	0	31.7	2.16	52.5
Frequency(MHz)	Water	DGBE (%)			Salt (%)		Conductivity $\sigma$ (S/m)	Permittivity $\epsilon$
5200	78.60	21.40			/		5.30	49.00
5800	78.50	21.40			0.1		6.00	48.20

## 5. System Verification

### 5.1 Purpose of System Check

The system performance check verifies that the system operates within its specifications. System and operator errors can be detected and corrected. It is recommended that the system performance check be performed prior to any usage of the system in order to guarantee reproducible results. The system performance check uses normal SAR measurements in a simplified setup with a well characterized source. The setup was selected to give a high sensitivity to all parameters that might fail or vary over time. The system check does not intend to replace the calibration of the components, but indicates situations where the system uncertainty is exceeded due to drift or failure.

## 5.2 System Check Setup



## 6. TEST POSITION CONFIGURATIONS

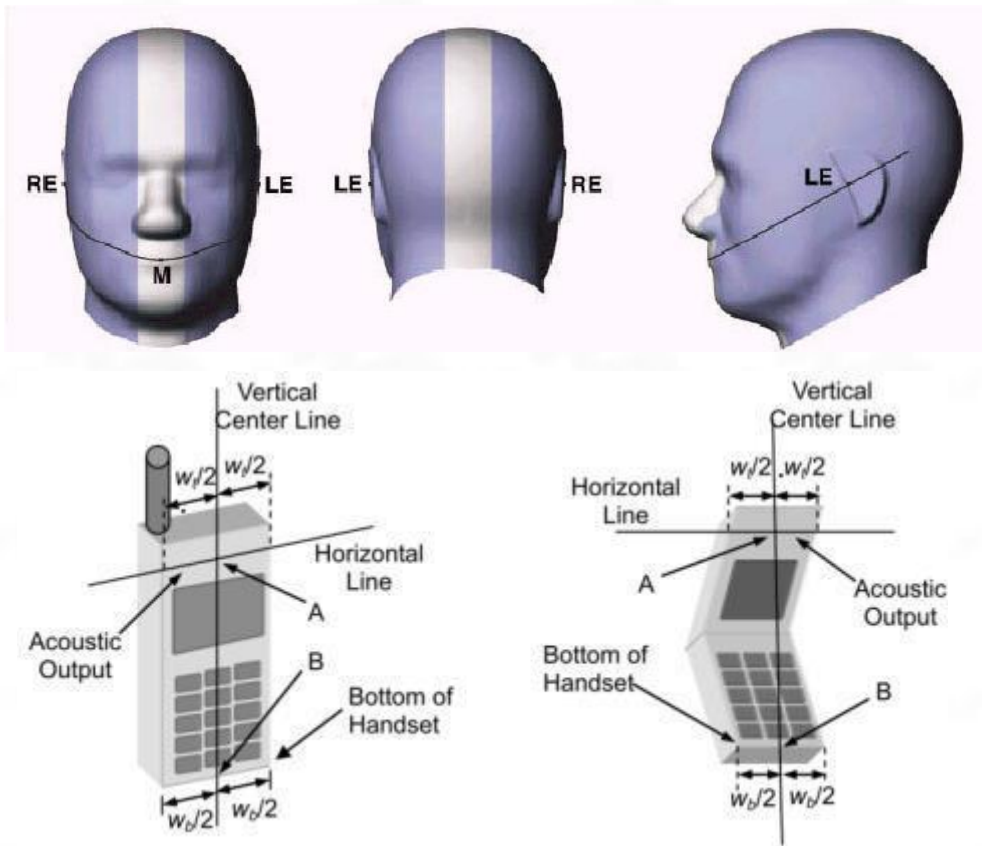
According to KDB 648474 D04 Handset, handsets are tested for SAR compliance in head, body-worn accessory and other use configurations described in the following subsections.

### 6.1 Head Exposure Conditions

Head exposure is limited to next to the ear voice mode operations. Head SAR compliance is tested according to the test positions defined in IEEE Std 1528-2013 using the SAM phantom illustrated as below.

#### 6.1.1 Two Imaginary Lines on the Handset

- The vertical center line passes through two points on the front side of the handset - the midpoint of the width  $w_t$  of the handset at the level of the acoustic output, and the midpoint of the width  $w_b$  of the bottom of the handset.
- The horizontal line is perpendicular to the vertical center line and passes through the center of the acoustic output. The horizontal line is also tangential to the face of the handset at point A.
- The two lines intersect at point A. Note that for many handsets, point A coincides with the center of the acoustic output; however, the acoustic output may be located elsewhere on the horizontal line. Also note that the vertical center line is not necessarily parallel to the front face of the handset, especially for clamshell handsets, handsets with flip covers, and other irregularly shaped handsets.



### 6.1.2 Two Imaginary Lines on the Handset

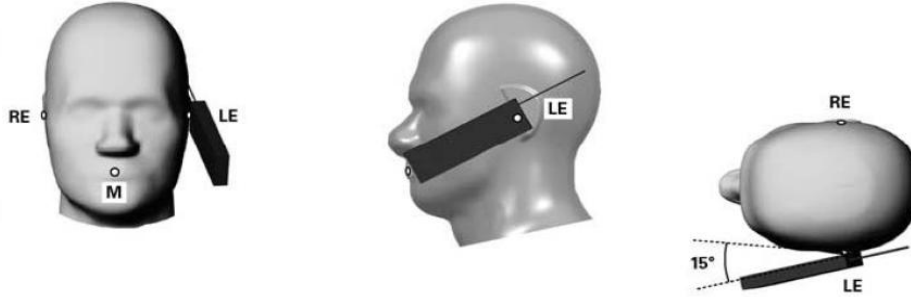
- (a) To position the device with the vertical center line of the body of the device and the horizontal line crossing the center piece in a plane parallel to the sagittal plane of the phantom. While maintaining the device in this plane, align the vertical center line with the reference plane containing the three ear and mouth reference point (M: Mouth, RE: Right Ear, and LE: Left Ear) and align the center of the ear piece with the line RE-LE.
- (b) To move the device towards the phantom with the ear piece aligned with the line LE-RE until the phone touched the ear. While maintaining the device in the reference plane and maintaining the phone contact with the ear, move the bottom of the phone until any point on the front side is in contact with the cheek of the phantom or until contact with the ear is lost.





### 6.1.3 Titled Position

- (a) To position the device in the “cheek” position described above.
- (b) While maintaining the device the reference plane described above and pivoting against the ear, moves it outward away from the mouth by an angle of 15 degrees or until contact with the ear is lost.

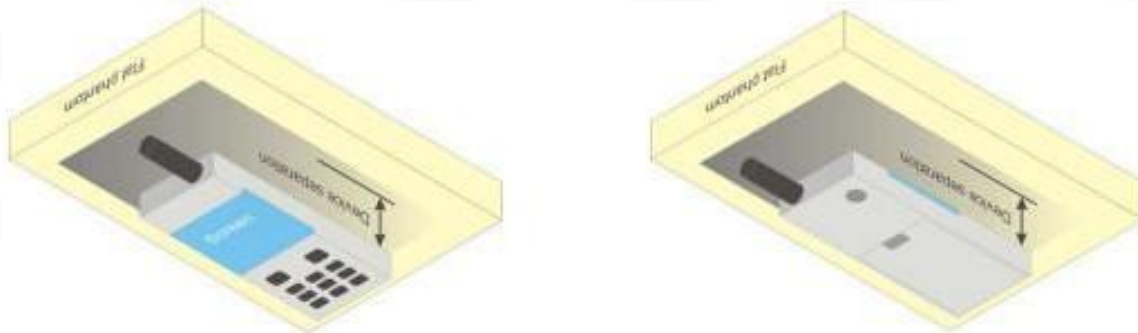


## 6.2 Body-worn Position Conditions

Body-worn accessory exposure is typically related to voice mode operations when handsets are carried in body-worn accessories. The body-worn accessory procedures in KDB 447498 are used to test for body-worn accessory SAR compliance, without a headset connected to it. This enables the test results for such configuration to be compatible with that required for hotspot mode when the body-worn accessory test separation distance is greater than or equal to that required for hotspot mode. When the reported SAR for a body-worn accessory.

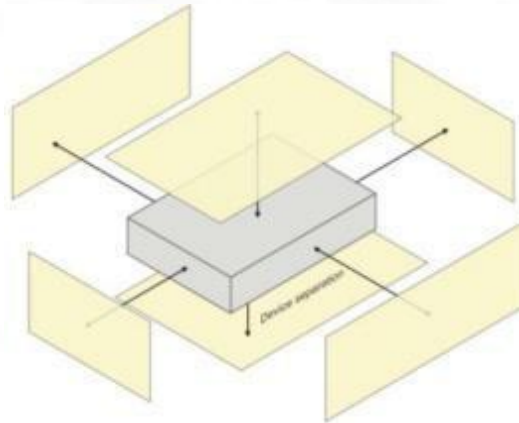
Body-worn accessories that do not contain metallic or conductive components may be tested according to worst-case exposure configurations, typically according to the smallest test separation distance required for the group of body-worn accessories with similar operating and exposure characteristics. All body-worn accessories containing metallic components are tested in conjunction with the host device.

Body-worn accessory SAR compliance is based on a single minimum test separation distance for all wireless and operating modes applicable to each body-worn accessory used by the host, and according to the relevant voice and/or data mode transmissions and operations. If a body-worn accessory supports voice only operations in its normal and expected use conditions, testing of data mode for body-worn compliance is not required. A conservative minimum test separation distance for supporting off-the-shelf body-worn accessories that may be acquired by users of consumer handsets is used to test for body-worn accessory SAR compliance. This distance is determined by the handset manufacturer, according to the requirements of Supplement C 01-01. Devices that are designed to operate on the body of users using lanyards and straps, or without requiring additional body-worn accessories, will be tested using a conservative minimum test separation distance  $\leq 5$  mm to support compliance.



### 6.3 Hotspot Mode Exposure Position Conditions

For handsets that support hotspot mode operations, with wireless router capabilities and various web browsing functions, the relevant hand and body exposure conditions are tested according to the hotspot SAR procedures in KDB 941225. A test separation distance of 10 mm is required between the phantom and all surfaces and edges with a transmitting antenna located within 25 mm from that surface or edge. When the form factor of a handset is smaller than 9 cm x 5 cm, a test separation distance of 5 mm (instead of 10 mm) is required for testing hotspot mode. When the separation distance required for body-worn accessory testing is larger than or equal to that tested for hotspot mode, in the same wireless mode and for the same surface of the phone, the hotspot mode SAR data may be used to support body-worn accessory SAR compliance for that particular configuration (surface).



### 6.4 Product Specific 10g Exposure Consideration

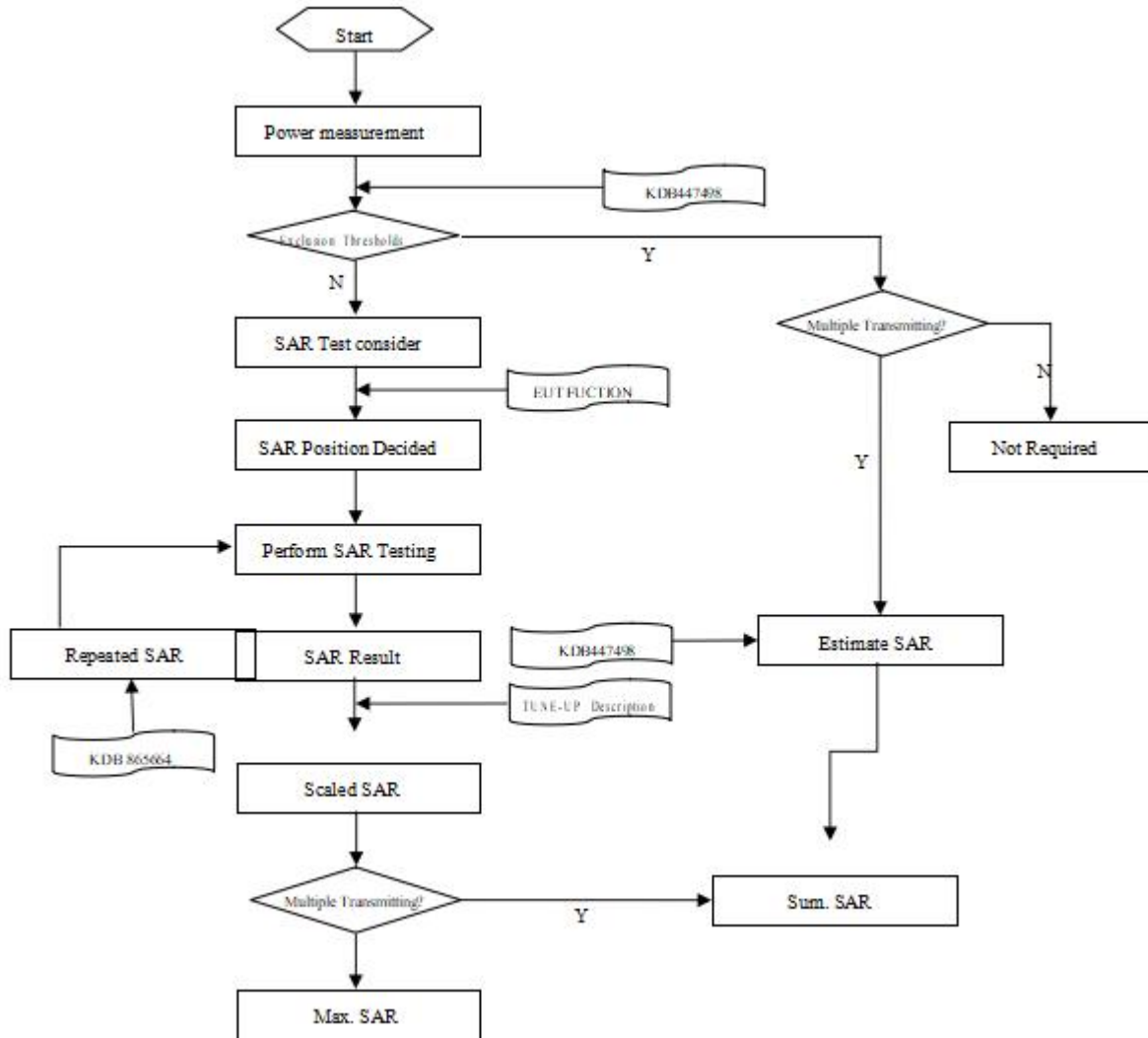
According with FCC KDB 648474 D04, for smart phones with a display diagonal dimension > 15.0 cm or an overall diagonal dimension > 16.0 cm that provide similar mobile web access and multimedia support found in mini-tablets or UMPC mini-tablets that support voice calls next to the ear, unless it is confirmed otherwise through KDB inquiries, the following phablet procedures should be applied to evaluate SAR compliance for each applicable wireless modes and frequency band. Devices marketed as phablets, regardless of form factors and operating characteristics must be tested as a phablet to determine SAR compliance;

The UMPC mini-tablet procedures must also be applied to test the SAR of all surfaces and edges with an antenna located at  $\leq 25$  mm from that surface or edge, in direct contact with a flat phantom, for 10-g extremity SAR according to the body-equivalent tissue dielectric parameters in KDB 865664 to address interactive hand use exposure conditions. The UMPC mini-tablet 1-g SAR at 5 mm is not required. When hotspot mode applies, 10-g extremity SAR is required only for the surfaces and edges with hotspot mode 1-g reported SAR > 1.2 W/kg.

## 7. Measurement Procedure

### 7.1 Measurement Process Diagram

Body SAR



## 7.2 SAR Scan General Requirement

Probe boundary effect error compensation is required for measurements with the probe tip closer than half a probe tip diameter to the phantom surface. Both the probe tip diameter and sensor offset distance must satisfy measurement protocols; to ensure probe boundary effect errors are minimized and the higher fields closest to the phantom surface can be correctly measured and extrapolated to the phantom surface for computing 1 g SAR. Tolerances of the post-processing algorithms must be verified by the test laboratory for the scan resolutions used in the SAR measurements, according to the reference distribution functions specified in IEC/IEEE 62209-1528: 2020.

**Table 3 – Area scan parameters**

Parameter	DUT transmit frequency being tested	
	$f \leq 3$ GHz	3 GHz < $f \leq 10$ GHz
Maximum distance between the measured points (geometric centre of the sensors) and the inner phantom surface ( $z_{M1}$ in Figure 20 in mm)	5 ± 1	$\delta \ln(2)/2 \pm 0,5^a$
Maximum spacing between adjacent measured points in mm (see O.8.3.1) <sup>b</sup>	20, or half of the corresponding zoom scan length, whichever is smaller	60/f, or half of the corresponding zoom scan length, whichever is smaller
Maximum angle between the probe axis and the phantom surface normal ( $\alpha$ in Figure 20) <sup>c</sup>	5° (flat phantom only) 30° (other phantoms)	5° (flat phantom only) 20° (other phantoms)
Tolerance in the probe angle	1°	1°

<sup>a</sup>  $\delta$  is the penetration depth for a plane-wave incident normally on a planar half-space.  
<sup>b</sup> See Clause O.8 on how  $\Delta x$  and  $\Delta y$  may be selected for individual area scan requirements.  
<sup>c</sup> The probe angle relative to the phantom surface normal is restricted due to the degradation in the measurement accuracy in fields with steep spatial gradients. The measurement accuracy decreases with increasing probe angle and increasing frequency. This is the reason for the tighter probe angle restriction at frequencies above 3 GHz.

**Table 4 – Zoom scan parameters**

Parameter	DUT transmit frequency being tested	
	$f \leq 3$ GHz	3 GHz < $f \leq 10$ GHz
Maximum distance between the closest measured points and the phantom surface ( $z_{M1}$ in Figure 20 and Table 3, in mm)	5	$\delta \ln(2)/2^a$
Maximum angle between the probe axis and the phantom surface normal ( $\alpha$ in Figure 20)	5° (flat phantom only) 30° (other phantoms)	5° (flat phantom only) 20° (other phantoms)
Maximum spacing between measured points in the x- and y-directions ( $\Delta x$ and $\Delta y$ , in mm)	8	24/f <sup>b</sup>
For uniform grids: Maximum spacing between measured points in the direction normal to the phantom shell ( $\Delta z_1$ in Figure 20, in mm)	5	10/(f - 1)
For graded grids: Maximum spacing between the two closest measured points in the direction normal to the phantom shell ( $\Delta z_1$ in Figure 20, in mm)	4	12/f
For graded grids: Maximum incremental increase in the spacing between measured points in the direction normal to the phantom shell ( $R_z = \Delta z_2/\Delta z_1$ in Figure 20)	1,5	1,5
Minimum edge length of the zoom scan volume in the x- and y-directions ( $L_z$ in O.8.3.2, in mm)	30	22
Minimum edge length of the zoom scan volume in the direction normal to the phantom shell ( $L_n$ in O.8.3.2 in mm)	30	22
Tolerance in the probe angle	1°	1°

<sup>a</sup>  $\delta$  is the penetration depth for a plane-wave incident normally on a planar half-space.  
<sup>b</sup> This is the maximum spacing allowed, which might not work for all circumstances.

### 7.3 Measurement Procedure

The following steps are used for each test position

- a. Establish a call with the maximum output power with a base station simulator. The connection between the mobile and the base station simulator is established via air interface
- b. Measurement of the local E-field value at a fixed location. This value serves as a reference value for calculating a possible power drift.
- c. Measurement of the SAR distribution with a grid of 8 to 16mm \* 8 to 16 mm and a constant distance to the inner surface of the phantom. Since the sensors cannot directly measure at the inner phantom surface, the values between the sensors and the inner phantom surface are extrapolated. With these values the area of the maximum SAR is calculated by an interpolation scheme.
- d. Around this point, a cube of 30 \* 30 \* 30 mm or 32 \* 32 \* 32 mm is assessed by measuring 5 or 8 \* 5 or 8\*4 or 5 mm. With these data, the peak spatial-average SAR value can be calculated.

### 7.4 Area & Zoom Scan Procedure

First Area Scan is used to locate the approximate location(s) of the local peak SAR value(s). The measurement grid within an Area Scan is defined by the grid extent, grid step size and grid offset. Next, in order to determine the EM field distribution in a three-dimensional spatial extension, Zoom Scan is required. The Zoom Scan is performed around the highest E-field value to determine the averaged SAR-distribution over 10 g. Area scan and zoom scan resolution setting follows KDB 865664 D01v01r04 quoted below.

When the 1 g SAR of the highest peak is within 2 dB of the SAR limit, additional zoom scans are required for other peaks within 2 dB of the highest peak that have not been included in any zoom scan to ensure there is no increase in SAR.

## 8. Conducted RF Output Power

### 8.1 GSM

Mode: GSM850		Maximum Tune-up(dBm)	Burst Average Power (dBm)			Division Factors	Frame-Average Power (dBm)		
			CH128	CH190	CH251		CH128	CH190	CH251
			824.2MHz	836.6MHz	848.8MHz		824.2MHz	836.6MHz	848.8MHz
GSM		31.50	31.31	31.30	30.98	-9.03	22.28	22.27	21.95
GPRS (GMSK)	1Tx slot	28.00	27.56	27.42	27.17	-9.03	18.53	18.39	18.14
	2Tx slots	27.50	27.46	27.34	27.09	-6.02	21.44	21.32	21.07
	3Tx slots	<b>27.50</b>	<b>27.33</b>	27.21	26.99	-4.26	<b>23.07</b>	22.95	22.73
	4Tx slots	25.50	25.12	25.06	24.87	-3.01	22.11	22.05	21.86
EGPRS (8PSK)	1Tx slot	27.50	27.46	27.21	26.99	-9.03	18.43	18.18	17.96
	2Tx slots	27.50	27.37	27.1	26.91	-6.02	21.35	21.08	20.89
	3Tx slots	27.50	27.26	25.04	26.84	-4.26	23.00	20.78	22.58
	4Tx slots	25.50	25.18	25.13	24.81	-3.01	22.17	22.12	21.80
Mode: GSM1900		Maximum Tune-up(dBm)	Burst Average Power (dBm)			Division Factors	Frame-Average Power (dBm)		
			CH512	CH661	CH810		CH512	CH661	CH810
			1850.2MHz	1880.0MHz	1909.8MHz		1850.2MHz	1880.0MHz	1909.8MHz
GSM		28.50	28.36	28.43	28.35	-9.03	19.33	19.40	19.32
GPRS (GMSK)	1Tx slot	25.50	25.32	25.12	24.78	-9.03	16.29	16.09	15.75
	2Tx slots	25.50	25.2	24.99	24.63	-6.02	19.18	18.97	18.61
	3Tx slots	<b>25.50</b>	<b>25.06</b>	24.84	24.43	-4.26	<b>20.80</b>	20.58	20.17
	4Tx slots	23.50	23.03	22.78	22.37	-3.01	20.02	19.77	19.36
EGPRS (8PSK)	1Tx slot	25.50	25.4	25.33	25.06	-9.03	16.37	16.30	16.03
	2Tx slots	25.50	25.36	25.29	24.98	-6.02	19.34	19.27	18.96
	3Tx slots	25.50	25.31	25.22	22.97	-4.26	21.05	20.96	18.71
	4Tx slots	25.00	23.37	23.26	24.77	-3.01	20.36	20.25	21.76
Note: 1) Division Factors To average the power, the division factor is as follows: 1Tx-slot = 1 transmit time slot out of 8 time slots=> conducted power divided by (8/1) => -9.03dB 2Tx-slots = 2 transmit time slots out of 8 time slots=> conducted power divided by (8/2) => -6.02dB 3Tx-slots = 3 transmit time slots out of 8 time slots=> conducted power divided by (8/3) => -4.26dB 4Tx-slots = 4 transmit time slots out of 8 time slots=> conducted power divided by (8/4) => -3.01dB									

## 8.2 WCDMA

Mode		Maximum Tune-up(dBm)	WCDMA Band II		
			Conducted Power (dBm)		
			CH9262	CH9400	CH9538
RMC 12.2K		<b>22.00</b>	21.46	21.56	<b>21.60</b>
HSDPA	Subtest-1	20.50	19.96	19.60	20.08
	Subtest-2	20.00	19.41	19.13	19.57
	Subtest-3	20.00	19.54	19.22	19.54
	Subtest-4	19.50	19.35	19.19	19.34
HSUPA	Subtest-1	19.00	18.73	18.65	18.34
	Subtest-2	19.00	18.68	18.77	18.66
	Subtest-3	19.50	19.18	19.29	18.82
	Subtest-4	18.50	18.36	17.61	17.79
	Subtest-5	20.50	19.65	19.95	20.23
Mode		Maximum Tune-up(dBm)	WCDMA Band V		
			Conducted Power (dBm)		
			CH4132	CH4183	CH4233
RMC 12.2K		<b>22.00</b>	<b>21.58</b>	21.50	21.44
HSDPA	Subtest-1	20.50	19.77	19.62	20.05
	Subtest-2	20.00	19.45	19.20	19.70
	Subtest-3	19.50	19.43	19.07	19.45
	Subtest-4	20.00	19.47	19.10	19.56
HSUPA	Subtest-1	19.00	18.55	18.40	18.44
	Subtest-2	19.00	18.70	18.63	18.87
	Subtest-3	19.50	18.54	19.20	18.82
	Subtest-4	18.50	18.49	18.31	18.34
	Subtest-5	20.50	20.31	19.96	20.16
Per KDB 941225 D01, when the maximum output power and tune-up tolerance specified for production units in a secondary mode is $\leq 1$ dB higher than the primary mode (RMC12.2kbps) or when the highest reported SAR of the primary mode is scaled by the ratio of specified maximum output power and tune-up tolerance of secondary to primary mode and the adjusted SAR is $\leq 1.2$ W/kg, SAR measurement is not required for the secondary mode.					

### 8.3 LTE

#### Band 2

LTE-FDD Band 2				Maximum Tune-up(dBm)	Conducted Power(dBm)			
Bandwidth	Modulation	RB allocation	RB offset		18607	18900	19193	
					1850.7MHz	1880.0MHz	1909.3MHz	
1.4MHz	QPSK	1	0	22.50	22.07	22.31	21.84	
			2	22.50	21.82	22.08	22.41	
			5	22.50	22.12	21.97	22.47	
		3	0	22.00	21.81	21.88	21.52	
			2	22.00	21.72	21.58	21.81	
			3	22.50	21.56	22.12	22.30	
	16QAM	6	0	22.50	22.04	22.25	22.18	
			0	22.50	21.90	22.26	21.60	
			2	22.50	22.34	22.29	21.95	
		1	5	22.50	22.15	21.93	22.21	
			0	22.50	22.43	22.33	22.13	
			2	22.50	22.23	22.38	22.33	
3	3	22.00	21.56	21.64	21.79			
	6	22.00	21.64	21.84	21.61			
	0	22.00	21.64	21.84	21.61			
Bandwidth	Modulation	RB allocation	RB offset	Maximum Tune-up(dBm)	18615	18900	19185	
					1851.5MHz	1880.0MHz	1908.5MHz	
3MHz	QPSK	1	0	22.50	21.76	22.15	22.32	
			7	22.50	21.59	22.22	21.80	
			14	22.50	21.82	22.24	21.86	
		8	0	22.50	22.40	22.31	22.48	
			4	22.50	21.67	22.47	21.56	
			7	22.50	22.15	21.57	22.45	
	15	0	22.50	22.37	22.41	21.66		
	16QAM	1	0	22.50	21.52	22.19	22.44	
			7	22.50	21.63	22.15	21.98	
			14	22.50	21.68	22.48	21.55	
		8	0	22.00	21.71	21.85	21.68	
			4	22.00	21.87	21.70	21.60	
			7	22.50	21.92	21.93	22.34	
		15	0	22.50	21.75	22.22	22.44	
		Bandwidth	Modulation	RB allocation	RB offset	Maximum Tune-up(dBm)	18625	18900
1852.5MHz							1880.0MHz	1907.5MHz
5MHz	QPSK	1	0	22.50	22.44	22.26	21.77	
			12	22.50	22.35	21.88	22.24	
			24	22.50	21.78	22.10	21.80	
		12	0	22.50	22.06	21.52	22.12	
			6	22.50	21.64	21.50	22.07	
			13	22.50	22.38	22.03	22.44	
	25	0	22.50	21.81	21.61	22.35		
	16QAM	1	0	22.00	21.55	21.97	21.51	
			12	22.50	22.14	21.68	21.83	
			24	22.00	21.72	21.89	21.79	
		12	0	22.50	21.61	21.69	22.27	
			6	22.50	21.52	22.42	22.40	
			13	22.00	21.69	21.86	21.86	
		25	0	22.50	21.51	21.82	22.44	



LTE-FDD Band 2				Maximum Tune-up(dBm)	Conducted Power(dBm)			
Bandwidth	Modulation	RB allocation	RB offset		18650	18900	19150	
					1855.0MHz	1880.0MHz	1905.0MHz	
10MHz	QPSK	1	0	22.50	22.20	21.98	21.54	
			25	22.50	22.18	22.17	21.78	
			49	22.50	21.86	22.44	21.66	
		25	0	22.50	22.10	22.24	21.60	
			13	22.50	22.07	22.09	22.05	
			25	22.50	21.90	22.00	22.38	
	50	0	22.50	21.83	21.77	22.08		
		16QAM	1	0	22.50	21.96	22.00	22.21
				25	22.50	22.07	22.21	21.96
	49			22.50	22.01	21.68	21.89	
	25	16QAM	25	0	22.50	21.84	21.69	22.13
				13	22.50	22.38	21.85	22.01
				25	22.50	22.09	22.15	21.63
	50	0	22.50	22.24	21.70	21.82		
	Bandwidth	Modulation	RB allocation	RB offset	Maximum Tune-up(dBm)	18675	18900	19125
15MHz	QPSK	1	0	22.50	22.05	22.27	21.98	
			38	22.00	21.89	21.60	21.93	
			74	22.50	21.51	21.86	22.33	
		36	0	22.50	21.99	21.75	22.21	
			18	22.50	22.19	21.73	21.55	
			39	22.50	22.16	21.99	21.90	
	75	0	22.50	22.16	21.82	21.63		
		16QAM	1	0	22.50	22.17	21.66	22.49
				38	22.50	22.22	21.75	21.74
	74			22.50	22.08	22.35	21.79	
	36	16QAM	36	0	22.50	22.41	22.40	22.08
				18	22.50	21.94	21.90	22.13
				39	22.50	22.40	22.01	22.20
	75	0	22.50	22.48	21.85	21.60		
	Bandwidth	Modulation	RB allocation	RB offset	Maximum Tune-up(dBm)	18700	18900	19100
20MHz	QPSK	1	0	22.50	21.99	21.61	22.04	
			50	<b>22.50</b>	21.60	<b>22.12</b>	21.71	
			99	22.00	21.60	21.80	21.56	
		50	0	22.50	22.36	22.43	22.27	
			25	22.50	22.45	22.16	21.78	
			50	22.50	22.38	<b>22.44</b>	22.12	
	100	0	22.50	21.51	21.87	22.22		
		16QAM	1	0	22.50	21.51	22.35	21.57
				50	22.50	21.50	22.39	21.66
	99			22.50	21.65	21.87	22.21	
	50	16QAM	50	0	22.50	21.84	21.92	22.36
				25	22.50	22.42	21.66	21.66
				50	22.00	21.96	21.66	21.58
	100	0	22.50	22.38	21.85	22.03		

Band 4

LTE-FDD Band 4				Maximum Tune-up(dBm)	Conducted Power(dBm)				
Bandwidth	Modulation	RB allocation	RB offset		19957	20175	20393		
					1710.7MHz	1732.5MHz	1754.3MHz		
1.4MHz	QPSK	1	0	22.50	22.16	21.58	21.95		
			2	22.50	22.30	22.15	22.28		
			5	22.50	22.11	22.12	22.19		
		3	0	22.50	21.99	21.98	22.02		
			2	22.50	22.25	22.40	22.01		
			3	22.50	22.42	21.67	21.93		
		6	0	22.50	22.31	22.18	22.30		
		16QAM	1	0	22.50	22.09	22.09	21.78	
				2	22.50	21.63	22.13	22.17	
	5			22.50	22.40	21.78	22.16		
	3		0	22.50	21.78	21.91	22.46		
			2	22.00	21.61	21.92	21.58		
			3	22.50	22.01	22.32	21.53		
	6		0	22.00	21.68	21.96	21.53		
	Bandwidth		Modulation	RB allocation	RB offset	Maximum Tune-up(dBm)	19965	20175	20385
							1711.5MHz	1732.5MHz	1753.5MHz
	3MHz	QPSK	1	0	23.00	21.98	21.75	22.50	
				7	22.50	21.81	21.86	22.07	
14				22.50	22.15	21.53	21.91		
8			0	22.50	22.34	22.47	22.12		
			4	22.50	22.39	22.03	22.14		
			7	22.00	21.93	21.65	21.85		
15			0	22.50	21.69	21.85	22.35		
16QAM			1	0	22.00	21.55	21.54	22.00	
				7	22.50	22.09	22.40	22.15	
		14		22.50	22.42	21.61	21.61		
		8	0	22.50	22.06	22.27	22.02		
			4	22.50	22.15	22.38	21.71		
			7	22.50	22.03	21.69	22.10		
		15	0	22.50	22.07	22.28	21.68		
		Bandwidth	Modulation	RB allocation	RB offset	Maximum Tune-up(dBm)	19975	20175	20375
							1712.5MHz	1732.5MHz	1752.5MHz
5MHz		QPSK	1	0	22.00	21.88	21.96	21.98	
				13	22.50	22.21	22.33	21.92	
	24			22.50	21.71	22.49	22.25		
	12		0	22.50	21.67	22.00	21.77		
			6	22.50	21.94	22.49	22.33		
			13	22.50	21.53	22.43	22.35		
	25		0	22.50	21.77	21.76	22.07		
	16QAM		1	0	22.00	21.96	21.78	21.55	
				13	22.50	22.18	22.33	22.29	
		24		22.50	22.27	21.96	21.83		
		12	0	22.50	22.06	22.23	22.25		
			6	22.50	22.47	21.54	21.60		
			13	22.50	22.02	21.77	22.19		
		25	0	22.50	21.97	21.92	22.12		

LTE-FDD Band 4				Maximum Tune-up(dBm)	Conducted Power(dBm)				
Bandwidth	Modulation	RB allocation	RB offset		20000	20175	20350		
					1715.0MHz	1732.5MHz	1750.0MHz		
10MHz	QPSK	1	0	22.00	21.87	21.53	21.92		
			25	22.50	22.48	22.42	22.32		
			49	22.50	22.43	22.38	22.01		
		25	0	22.50	22.18	22.42	21.89		
			13	22.50	22.37	22.49	21.79		
			25	22.50	22.05	21.68	21.64		
	16QAM	50	0	22.50	22.12	21.84	22.19		
			1	0	22.50	21.89	21.89	22.46	
				25	22.50	22.45	22.46	22.30	
		49		22.00	21.80	21.79	21.79		
		25	0	22.50	22.41	22.15	22.25		
			13	22.50	21.51	21.55	22.49		
			25	22.50	22.29	21.97	21.51		
			50	0	22.50	22.26	21.84	21.64	
				15MHz	QPSK	1	0	22.50	21.89
38	22.50						21.94	21.83	22.37
74	22.50	22.21	21.55				21.51		
36	0	22.50	22.45	21.86		21.56			
	18	22.50	22.10	22.48		22.47			
	39	22.50	22.24	21.72		21.73			
16QAM	75	0	22.50	21.52	22.46	21.83			
		1	0	22.50	22.46	21.78	21.86		
			38	22.50	21.66	22.39	21.85		
	74		0	22.00	21.82	21.84	21.71		
		36	0	22.50	22.03	21.59	22.41		
			18	22.50	21.63	21.63	22.02		
	39		0	22.50	22.00	21.94	22.22		
		75	0	22.50	22.47	21.58	21.77		
			20MHz	QPSK	1	0	22.50	22.37	21.77
50	<b>22.50</b>					22.29	21.80	<b>22.40</b>	
99	22.50	21.59				21.87	22.39		
50	0	22.50	21.65		22.46	<b>22.30</b>			
	25	22.50	22.22		22.01	22.04			
	50	22.50	22.32		22.37	22.02			
16QAM	100	0	22.50	21.91	22.01	21.69			
		1	0	22.50	22.42	21.69	21.59		
			50	22.50	21.98	22.34	21.82		
	99		0	22.50	21.93	21.68	22.23		
		50	0	22.50	21.89	22.25	22.46		
			25	23.00	22.40	22.50	21.67		
	50		50	22.50	22.04	21.97	21.58		
		100	0	22.50	22.37	21.62	21.69		
			20MHz	QPSK	1	0	22.50	22.37	21.77
50	<b>22.50</b>					22.29	21.80	<b>22.40</b>	
99	22.50	21.59				21.87	22.39		
50	0	22.50	21.65		22.46	<b>22.30</b>			
	25	22.50	22.22		22.01	22.04			
	50	22.50	22.32		22.37	22.02			
16QAM	100	0	22.50	21.91	22.01	21.69			
		1	0	22.50	22.42	21.69	21.59		
			50	22.50	21.98	22.34	21.82		
	99		0	22.50	21.93	21.68	22.23		
		50	0	22.50	21.89	22.25	22.46		
			25	23.00	22.40	22.50	21.67		
	50		50	22.50	22.04	21.97	21.58		
		100	0	22.50	22.37	21.62	21.69		

Band 5

LTE-FDD Band 5				Maximum Tune-up(dBm)	Conducted Power(dBm)		
Bandwidth	Modulation	RB allocation	RB offset		20407	20525	20643
					824.7MHz	836.5MHz	848.3MHz
1.4MHz	QPSK	1	0	22.50	22.48	22.35	21.65
			2	22.50	21.57	22.40	21.79
			5	22.50	22.48	21.83	22.34
		3	0	22.50	21.54	22.02	21.80
			2	22.50	22.09	21.92	22.26
			3	22.50	21.75	21.51	22.27
	6	0	22.50	22.09	21.92	21.98	
	16QAM	1	0	22.50	22.35	21.67	22.45
			2	22.50	22.17	22.22	22.48
			5	22.50	22.48	21.98	21.73
		3	0	22.00	21.93	21.88	21.88
			2	22.50	22.36	22.08	22.32
3			22.50	21.71	22.13	21.55	
6	0	22.50	22.19	21.83	21.81		
Bandwidth	Modulation	RB allocation	RB offset	Maximum Tune-up(dBm)	20415	20525	20635
					825.5MHz	836.5MHz	847.5MHz
3MHz	QPSK	1	0	22.50	22.43	21.99	22.29
			7	22.50	22.16	22.38	21.64
			14	22.50	21.69	22.42	22.26
		8	0	22.50	22.22	21.89	22.49
			4	22.50	22.35	21.98	21.98
			7	22.50	22.21	22.16	22.39
	15	0	22.00	21.52	21.91	21.57	
	16QAM	1	0	22.50	22.25	22.28	21.68
			7	22.50	21.79	22.12	21.85
			14	22.50	21.98	21.72	22.19
		8	0	22.50	21.92	22.28	22.46
			4	22.50	22.02	22.10	22.30
			7	22.50	21.57	22.43	21.94
		15	0	22.50	22.22	22.38	21.92

LTE-FDD Band 5				Maximum Tune-up(dBm)	Conducted Power(dBm)			
Bandwidth	Modulation	RB allocation	RB offset		20425	20525	20625	
					826.5MHz	836.5MHz	846.5MHz	
5MHz	QPSK	1	0	22.50	22.20	22.47	22.27	
			13	23.00	22.50	22.16	22.37	
			24	22.50	21.93	21.98	22.12	
		12	0	22.50	21.69	22.12	21.71	
			6	23.00	22.41	22.46	22.50	
			13	22.50	22.12	22.35	22.25	
		25	0	22.50	21.60	21.55	22.22	
		16QAM	1	0	22.50	22.47	21.69	21.85
				13	22.50	21.84	22.37	22.12
	24			22.50	21.71	21.50	22.49	
	12		0	22.50	22.20	21.88	22.38	
			6	22.50	22.04	21.79	22.49	
			13	22.50	22.43	21.78	22.03	
	25	0	22.00	21.92	21.56	21.64		

Bandwidth	Modulation	RB allocation	RB offset	Maximum Tune-up(dBm)	20450	20525	20600
					829.0MHz	836.5MHz	844.0MHz
10MHz	QPSK	1	0	22.50	22.01	21.95	21.73
			25	<b>22.50</b>	21.91	<b>22.35</b>	21.91
			49	22.50	21.52	22.00	22.16
		25	0	22.50	22.26	21.79	22.17
			13	22.50	21.68	22.18	21.93
			25	22.50	22.28	<b>22.39</b>	21.70
	50	0	22.50	22.28	22.37	22.39	
	16QAM	1	0	22.50	21.67	21.71	22.40
			25	22.50	21.94	22.06	22.06
			49	22.50	21.95	22.22	21.54
		25	0	22.50	22.25	21.67	22.01
			13	22.50	21.92	22.29	21.60
			25	22.50	21.75	21.90	22.27
		50	0	22.50	22.10	22.06	22.09

Band 12

LTE-FDD Band 12				Maximum Tune-up(dBm)	Conducted Power(dBm)			
Bandwidth	Modulation	RB allocation	RB offset		23017	23095	23173	
					699.7MHz	707.5MHz	715.3MHz	
1.4MHz	QPSK	1	0	22.50	22.25	21.82	22.35	
			2	22.50	22.06	21.90	22.05	
			5	22.50	21.63	22.09	21.52	
		3	0	22.50	22.22	21.81	22.16	
			2	22.50	21.83	22.10	22.11	
			3	22.00	21.78	21.87	21.92	
	6	0	22.50	22.03	21.93	21.93		
	16QAM	1	0	22.50	22.05	21.62	22.21	
			2	22.00	21.94	21.78	22.00	
			5	22.50	22.19	21.94	22.46	
		3	0	22.50	22.34	22.19	22.35	
			2	22.00	21.54	21.71	21.53	
			3	22.50	22.16	22.14	21.64	
		6	0	22.50	21.64	22.21	22.27	
		Bandwidth	Modulation	RB allocation	RB offset	Maximum Tune-up(dBm)	23025	23095
						700.5MHz	707.5MHz	714.5MHz
3MHz	QPSK	1	0	22.50	21.59	21.75	22.35	
			7	22.50	22.41	21.62	21.65	
			14	22.50	22.19	21.82	21.62	
		8	0	22.50	22.36	22.16	21.80	
			4	22.50	21.56	22.28	22.01	
			7	22.00	21.53	21.99	21.81	
	15	0	22.00	21.91	21.58	21.63		
	16QAM	1	0	23.00	22.47	22.50	22.18	
			7	22.50	22.16	22.25	22.33	
			14	22.50	22.01	21.60	21.67	
		8	0	22.50	22.22	22.46	22.01	
			4	22.00	21.53	21.88	21.92	
			7	22.50	21.54	22.03	21.83	
		15	0	22.00	21.88	21.98	21.52	

Bandwidth	Modulation	RB allocation	RB offset	Maximum Tune-up(dBm)	23035	23095	23155
					701.5MHz	707.5MHz	713.5MHz
5MHz	QPSK	1	0	22.50	21.68	21.70	22.26
			13	22.50	22.16	22.17	22.48
			24	22.50	22.05	22.36	22.24
		12	0	22.50	22.25	22.06	21.77
			6	22.50	22.34	21.74	21.51
			13	22.50	22.31	22.25	21.95
	16QAM	1	0	22.50	21.66	21.61	22.15
			13	22.50	21.66	22.38	22.33
			24	22.50	21.55	22.43	21.60
	16QAM	12	0	22.50	22.21	22.29	22.42
			6	22.50	21.53	22.46	22.04
			13	22.50	21.87	22.14	22.32
		25	0	22.50	22.03	22.45	22.44
			0	22.50	22.20	21.73	21.53
			25	<b>22.50</b>	21.66	<b>22.39</b>	21.57
10MHz	QPSK	1	0	22.50	22.22	22.39	21.69
			25	22.50	22.22	22.39	21.69
			49	22.50	22.22	22.39	21.69
		25	0	22.50	21.81	22.08	22.09
			13	22.00	21.74	21.61	21.53
			25	22.50	21.99	<b>22.28</b>	22.11
	16QAM	1	0	22.50	22.03	22.19	21.53
			0	22.00	21.92	21.91	21.92
			25	22.50	22.00	21.83	22.16
	16QAM	25	0	22.50	22.45	22.14	21.96
			0	22.50	22.02	22.17	22.23
			13	22.50	22.13	22.16	22.02
		50	0	22.50	22.16	22.29	21.70
			0	22.50	22.10	22.44	21.50
			0	22.50	22.10	22.44	21.50

### 8.4 Wi-Fi

Band (GHz)	Mode	Channel	Freq. (MHz)	Average Power (dBm)	Maximum Tune-up(dBm)	SAR Test Require.
2.4 (2.4~2.4835)	802.11b	1	2412	14.13	14.50	No
		6	2437	<b>16.09</b>	<b>16.50</b>	Yes
		11	2462	15.54	16.00	No
	802.11g	1	2412	17.38	17.50	No
		6	2437	17.13	17.50	No
		11	2462	16.59	17.00	No
	802.11n(HT20)	1	2412	15.86	16.00	No
		6	2437	<b>17.73</b>	<b>18.00</b>	Yes
		11	2462	16.25	16.50	No
	802.11n(HT40)	3	2422	15.81	16.00	No
		6	2437	17.59	18.00	No
		9	2452	16.14	16.50	No

Note: SAR is not required for the following 2.4 GHz OFDM conditions as the highest reported SAR for DSSS is adjusted by the ratio of OFDM to DSSS specified maximum output power and the adjusted SAR is ≤ 1.2W/kg.

Band (GHz)	Mode	Channel	Freq. (MHz)	Average Power (dBm)	Maximum Tune-up(dBm)	SAR Test Require.
U-NII-1 (5.150~5.250)	802.11a	36	5180	16.30	16.50	No
		40	5200	16.41	16.50	No
		48	5240	16.26	16.50	No
	802.11n(HT20)	36	5180	16.41	16.50	No
		40	5200	16.48	16.50	No
		48	5240	16.33	16.50	No
	802.11ac(VHT20)	36	5180	16.55	17.00	No
		40	5200	16.24	16.50	No
		48	5240	16.10	16.50	No
	802.11n(HT40)	38	5190	<b>17.08</b>	<b>17.50</b>	Yes
		46	5230	16.91	17.00	No
	802.11ac(VHT40)	38	5190	16.48	16.50	No
		46	5230	16.55	17.00	No
	802.11ac(VHT80)	42	5210	16.78	17.00	No
Band (GHz)	Mode	Channel	Freq. (MHz)	Average Power (dBm)	Maximum Tune-up(dBm)	SAR Test Require.
U-NII-3 (5.725~5.850)	802.11a	149	5745	14.60	15.00	No
		157	5785	15.86	16.00	No
		165	5825	15.89	16.00	No
	802.11n(HT20)	149	5745	15.35	15.50	No
		157	5785	15.76	16.00	No
		165	5825	15.78	16.00	No
	802.11ac(VHT20)	149	5745	16.62	17.00	No
		157	5785	16.88	17.00	No
		165	5825	16.74	17.00	No
	802.11n(HT40)	151	5755	15.80	16.00	No
		159	5795	16.13	16.50	No
	802.11ac(VHT40)	151	5755	<b>17.02</b>	<b>17.50</b>	Yes
		159	5795	16.72	17.00	No
	802.11ac(VHT80)	155	5775	16.26	16.50	No

### 8.5 Bluetooth

EDR	Mode	Maximum Tune-up(dBm)	Average Conducted Output Power (dBm)		
			0	39	78
			2402MHz	2441MHz	2480MHz
	GFSK	0.00	-0.45	-0.40	-0.77
	π/4QPSK	0.50	-0.25	0.48	-0.20
	8DPSK	1.50	0.55	1.09	0.55
BLE	Mode	Maximum Tune-up(dBm)	Average Conducted Output Power (dBm)		
			0	20	39
			2402MHz	2440MHz	2480MHz
	1Mbps	<b>3.00</b>	2.12	<b>2.58</b>	2.39

Channel	Frequency (GHz)	Max. Tune-up Power (dBm)	Max. Power (mW)	Test distance (mm)	Exclusion thresholds for 1-g SAR	RF exposure evaluation required
20	2.440	3.00	2.00	0	2.75	No

**Note**

- Per KDB 447498 D04 Interim General RF Exposure Guidance v01, the 1-g SAR test exclusion thresholds for 300 MHz to 6 GHz at test separation distances ≤ 40 cm are determined by:

$$P_{th} \text{ (mW)} = \begin{cases} ERP_{20 \text{ cm}}(d/20 \text{ cm})^x & d \leq 20 \text{ cm} \\ ERP_{20 \text{ cm}} & 20 \text{ cm} < d \leq 40 \text{ cm} \end{cases} \quad \text{(B.2)}$$

where

$$P_{th} \text{ (mW)} = ERP_{20 \text{ cm}} \text{ (mW)} = \begin{cases} 2040f & 0.3 \text{ GHz} \leq f < 1.5 \text{ GHz} \\ 3060 & 1.5 \text{ GHz} \leq f \leq 6 \text{ GHz} \end{cases} \quad \text{(B.1)}$$

and  $f$  is in GHz,  $d$  is the separation distance (cm), and  $ERP_{20 \text{ cm}}$  is per Formula (B.1).

- When the minimum test separation distance is < 5 mm, a distance of 5 mm is applied to determine estimated SAR.
- Per KDB 248227 D01 v02r02, choose the highest output power channel to test SAR and determine further SAR exclusion.
- The output power of all data rate were prescan, just the worst case (the lowest data rate) of all mode were shown in report.

## 9. Test Exclusion Consideration

Antenna information:



WWAN Antenna	GSM/WCDMA/LTE TX/RX
WLAN/BT Antenna	WLAN/BT TX/RX
Note: 1. KDB 447498 D04v01, particular DUT edges were not required to be evaluated for SAR if the antenna-to-edge distance is greater than 2.5cm. 2. KDB 616217 D04 SAR for laptop and tablets v01r02, it doesn't require SAR evaluation for the front surface of a tablet. 3. Per KDB648474 D04, 10-g extremity SAR is not required when Body-Worn mode 1-g reported SAR < 1.2W/Kg.	

Distance of The Antenna to the EUT surface and edge (mm)						
Antenna	Front Side (mm)	Back Side (mm)	Left Edge (mm)	Right Edge (mm)	Top Edge (mm)	Bottom Edge (mm)
WWAN	<25	<25	201	132	<25	197
Wifi/BT	<25	<25	114	220	<25	198
Positions for SAR tests						
Antenna	Front Side (mm)	Back Side (mm)	Left Edge (mm)	Right Edge (mm)	Top Edge (mm)	Bottom Edge (mm)
WWAN	No	Yes	No	No	Yes	No
Wifi/BT	No	Yes	No	No	Yes	No

### 9.1 SAR Test Exclusion Consideration Table

Per KDB 447498 requires when the standalone SAR test exclusion of section 4.3.1 is applied to an antenna that transmits simultaneously with other antennas, the standalone SAR must be estimated according to the following format to determine simultaneous transmission SAR test exclusion:

$$(\text{max.power of channel, including tune-up tolerance, mW}) / (\text{min. test separation distance, mm}) \cdot [\sqrt{f(\text{GHz})} / x]$$

W/kg for test separation distances ≤ 50 mm;

where x = 7.5 for 1-g SAR, and x= 18.75 for 10-g SAR.

0.4 W/Kg for 1-g SAR and 1.0 W/kg for 10-g SAR, when the test separation distances is > 50 mm



# 10. Test Result

## Body 1g SAR Data

Band	Mode	Test Position with 0 mm	CH.	Freq. (MHz)	Ave. Power (dBm)	Tune-Up Limit (dBm)	Power Drift (%)	Meas. SAR1g (W/kg)	Scaling Factor	Reported SAR1g (W/kg)	Meas. No.
GSM 850	GPRS 3slots	Back	128	824.2	27.33	27.50	-3.260	0.748	1.040	<b>0.778</b>	1#
		Top	128	824.2	27.33	27.50	0.260	0.678	1.040	0.705	/
GSM 1900	GPRS 3slots	Back	512	1850.2	25.06	25.50	-2.050	0.722	1.107	<b>0.799</b>	2#
		Top	512	1850.2	25.06	25.50	-0.590	0.685	1.107	0.758	/
WCDMA Band II	RMC	Back	9538	1907.6	21.60	22.00	-3.950	0.667	1.096	<b>0.731</b>	3#
		Top	9538	1907.6	21.60	22.00	1.580	0.623	1.096	0.683	/
WCDMA Band V	RMC	Back	4132	826.4	21.58	22.00	-2.990	0.702	1.102	<b>0.774</b>	4#
		Top	4132	826.4	21.58	22.00	2.060	0.665	1.102	0.733	/
2.4 (2.4~2.4835)	802.11b	Back	6	2437	16.09	16.50	-1.390	0.239	1.099	<b>0.263</b>	9#
		Top	6	2437	16.09	16.50	2.480	0.201	1.099	0.221	/
	802.11 n(HT20)	Back	6	2437	17.73	18.00	0.890	0.152	1.064	0.162	/
		Top	6	2437	17.73	18.00	-1.800	0.121	1.064	0.129	/
U-NII-1 (5.150~5.250)	802.11 n(HT40)	Back	38	5190	17.08	17.50	-2.420	0.196	1.102	<b>0.216</b>	10#
		Top	38	5190	17.08	17.50	2.740	0.167	1.102	0.184	/
U-NII-3 (5.725~5.850)	802.11 ac(VHT40)	Back	151	5755	17.02	17.50	-3.690	0.172	1.117	<b>0.192</b>	11#
		Top	151	5755	17.02	17.50	-0.690	0.145	1.117	0.162	/

Band	Mode	Test Position with 0 mm	CH.	Freq. (MHz)	RB allocation	RB offset	Ave. Power (dBm)	Tune-Up Limit (dBm)	Power Drift (%)	Meas. SAR1g (W/kg)	Scaling Factor	Reported SAR1g (W/kg)	Meas. No.
LTE Band 2	QPSK (20MHz)	Back	18900	1880.0	1	50	22.12	22.50	-0.680	0.730	1.091	<b>0.796</b>	5#
					50	50	22.44	22.50	1.230	0.712	1.014	0.722	/
		Top	18900	1880.0	1	50	22.12	22.50	-1.240	0.682	1.091	0.744	/
					50	50	22.44	22.50	1.930	0.664	1.014	0.673	/
LTE Band 4	QPSK (20MHz)	Back	20300	1745.0	1	50	22.40	22.50	-1.740	0.768	1.023	<b>0.786</b>	6#
					50	0	22.30	22.50	2.150	0.741	1.047	0.776	/
		Top	20300	1745.0	1	50	22.40	22.50	0.420	0.723	1.023	0.740	/
					50	0	22.30	22.50	-1.520	0.705	1.047	0.738	/
LTE Band 5	QPSK (10MHz)	Back	20525	836.5	1	25	22.35	22.50	-2.550	0.272	1.035	<b>0.282</b>	7#
					25	25	22.39	22.50	2.740	0.251	1.026	0.258	/
		Top	20525	836.5	1	25	22.35	22.50	-3.230	0.242	1.035	0.250	/
					25	25	22.39	22.50	0.970	0.220	1.026	0.226	/
LTE Band 12	QPSK (10MHz)	Back	23095	707.5	1	25	22.39	22.50	-0.570	0.359	1.026	<b>0.368</b>	8#
					25	25	22.28	22.50	-1.600	0.323	1.052	0.340	/
		Top	23095	707.5	1	25	22.39	22.50	1.140	0.328	1.026	0.337	/
					25	25	22.28	22.50	-3.360	0.300	1.052	0.316	/

**Note:**

- Per KDB 447498 D04 v01, for each exposure position, if the highest output power channel Reported SAR ≤ 0.8W/kg, other channels SAR testing is not necessary.
- Per KDB 447498 D04 v01, body use is evaluated with the device positioned at 0mm from a flat phantom respectively filled with body tissue-equivalent medium.
- Per KDB 616217 D04 where SAR test considerations for tablets are based on a composite test separation distance of 0 mm from the back and edges of the device with antennas 2.5 cm or closer to the edge of the device, determined from general mixed use conditions for this type of devices.
- Per KDB 447498 D04 v01, the report SAR is measured SAR value adjusted for maximum tune-up tolerance. Scaling Factor=10<sup>[(tune-up limit power(dBm) - Ave.power power (dBm))/10]</sup>, where tune-up limit is the maximum rated power among all production units.  
Reported SAR(W/kg)=Measured SAR (W/kg)\*Scaling Factor.

## 11. SAR Measurement Variability

According to KDB 865664 D01, SAR measurement variability was assessed for each frequency band, which is determined by the SAR probe calibration point and tissue-equivalent medium used for the device measurements. When both head and body tissue-equivalent media are required for SAR measurements in a frequency band, the variability measurement procedures should be applied to the tissue medium with the highest measured SAR, using the highest measured SAR configuration for that tissue-equivalent medium. Alternatively, if the highest measured SAR for both head and body tissue-equivalent media are  $\leq 1.45$  W/kg and the ratio of these highest SAR values, i.e., largest divided by smallest value, is  $\leq 1.10$ , the highest SAR configuration for either head or body tissue-equivalent medium may be used to perform the repeated measurement. These additional measurements are repeated after the completion of all measurements requiring the same head or body tissue-equivalent medium in a frequency band. The test device should be returned to ambient conditions (normal room temperature) with the battery fully charged before it is re-mounted on the device holder for the repeated measurement(s) to minimize any unexpected variations in the repeated results.

SAR repeated measurement procedure:

1. When the highest measured SAR is  $< 0.80$  W/kg, repeated measurement is not required.
2. When the highest measured SAR is  $\geq 0.80$  W/kg, repeat that measurement once.
3. If the ratio of largest to smallest SAR for the original and first repeated measurements is  $> 1.20$ , or when the original or repeated measurement is  $\geq 1.45$  W/kg, perform a second repeated measurement.
4. If the ratio of largest to smallest SAR for the original, first and second repeated measurements is  $> 1.20$ , and the original, first or second repeated measurement is  $\geq 1.5$  W/kg, perform a third repeated measurement.

Note: For 1g SAR, the highest measured 1g SAR is  $0.768 < 0.80$  W/kg, repeated measurement is not required.

## 12. Simultaneous Transmission

Simultaneous transmission SAR test exclusion is determined for each operating configuration and exposure condition according to the reported standalone SAR of each applicable simultaneous transmitting antenna. When the sum of SAR 1g of all simultaneously transmitting antennas in an operating mode and exposure condition combination is within the SAR limit (SAR 1g 1.6 W/kg), the simultaneous transmission SAR is not required. When the sum of SAR 1g is greater than the SAR limit (SAR 1g 1.6 W/kg), SAR test exclusion is determined by the SAR to Peak Location Ratio (SPLSR).

### 12.1 Simultaneous Transmission Mode Considerations

Simultaneous transmission SAR test exclusion is determined for each operating configuration and exposure condition according to the reported standalone SAR of each applicable simultaneous transmitting antenna. The device has 2 Tx antennas, WWAN main antenna, Wifi/BT antenna supports 2.4G/5G Wi-Fi & BT. The 2 antennas can always transmit simultaneously. The work mode combination is showed as below table.

Application Simultaneous Transmission information:

NO.	Configuration	Body
1	WWAN+WIFI(2.4g)	Yes
2	WWAN+WIFI(5g)	Yes

### 12.2 Sum SAR of Simultaneous Transmission

Body

Band	Test Position	Scaled SAR			Σ SAR (W/kg) WWAN + WIFI 2.4G	Σ SAR (W/kg) WWAN + WIFI 5G	SPLSR	Remark
		WWAN	2.4G WIFI	5G WIFI				
GPRS 1900+4slots	Back	0.799	0.263	0.216	1.062	1.015	N/A	N/A
	Top	0.758	0.221	0.184	0.979	0.942	N/A	N/A

### 13. Test Equipment List

Description	Manufacturer	Model	Serial No./Version	Cal. Date	Cal. Due
E-Field Probe	MVG	SSE2	04/22 EPG0365	2024/02/06	2025/02/05
6 1/2 Digital Multimeter	Keithley	DMM6500	4527164	2023/11/16	2024/11/15
Wideband Radio Communication Tester	ROHDE & SCHWARZ	CMW500	161997	2023/11/16	2024/11/15
MXG Vector Signal Generator	Agilent	N5182A	MY46240163	2023/11/16	2024/11/15
E-Series Avg. Power Sensor	KEYSIGHT	E9300A	MY55050017	2024/03/20	2025/03/19
EPM Series Power Meter	KEYSIGHT	E4418B	MY41293435	2024/03/20	2025/03/19
10dB Attenuator	MIDWEST MICROWAVE	263-10dB	/	2024/03/20	2025/03/19
Coupler	MERRIMAC	CWM-10R-10.8G	LOT-83391	2024/03/20	2025/03/19
750MHz Validation Dipole	MVG	SID750	07/22 DIP 0750-655	2023/02/06	2025/02/05
835MHz Validation Dipole	MVG	SID835	07/22 DIP 0G835-656	2023/02/06	2025/02/05
1800MHz Validation Dipole	MVG	SID1800	07/22 DIP 1G800-657	2023/02/06	2025/02/05
1900MHz Validation Dipole	MVG	SID1900	07/22 DIP 1G900-658	2023/02/06	2025/02/05
2450MHz Validation Dipole	MVG	SID2450	07/22 DIP 2G450-662	2023/02/06	2025/02/05
5200MHz-5800MHz Validation Dipole	MVG	SID5000	07/22 DIP5G000-670	2023/02/06	2025/02/05
LIMESAR Dielectric Probe	MVG	SCLMP	06/22 OCPG88	/	/
ENA Series Network Analyzer	Agilent	E5071B	MY42301221	2023/11/16	2024/11/15
Thermometer	Riters	DT-232	21A11	2024/03/20	2025/03/19
Antenna network emulator	MVG	ANTA 74	07/22 ANTA 74	/	/
SAM Phantom	MVG	SAM	07/22 SAM149	/	/
Mobile Phone Positioning System	MVG	MSH 118	07/22 MSH 118	/	/
Mechanical Calibration Kit	PNA	/	/	/	/
Open SAR test software	MVG	/	V5.3.5	/	/

Note: For dipole antennas, BTF has adopted 3 years as calibration intervals, and on annual basis, every measurement dipole has been evaluated and is in compliance with the following criteria:

1. There is no physical damage on the dipole;
2. System validation with specific dipole is within 10% of calibrated value;
3. Return-loss in within 20% of calibrated measurement.
4. Impedance (real or imaginary parts) in within 5 Ohms of calibrated measurement.

## ANNEX A Simulating Liquid Verification Result

The dielectric parameters of the liquids were verified prior to the SAR evaluation using an SCLMP Dielectric Probe Kit.

Dielectric performance of tissue simulating liquid									
Frequency (MHz)	$\epsilon_r$		$\sigma$ (s/m)		Delta ( $\epsilon_r$ )	Delta ( $\sigma$ )	Limit	Temp (°C)	Date
	Target	Measured	Target	Measured					
750	41.90	41.80	0.89	0.86	0.24%	3.37%	±5%	20.0	9/5/2024
835	41.50	41.41	0.90	0.87	0.22%	3.33%	±5%	20.0	9/5/2024
1800	40.00	39.91	1.40	1.37	0.23%	2.14%	±5%	20.0	10/5/2024
1900	40.00	39.88	1.40	1.41	0.30%	-0.71%	±5%	20.0	10/5/2024
2450	39.20	39.08	1.80	1.81	0.31%	-0.56%	±5%	20.0	11/5/2024
5200	36.00	35.88	4.66	4.70	0.33%	-0.86%	±5%	20.0	13/5/2024
5800	35.30	35.18	5.27	5.31	0.34%	-0.76%	±5%	20.0	13/5/2024

NOTE: The dielectric parameters of the tissue-equivalent liquid should be measured under similar ambient conditions and within 2 °C of the conditions expected during the SAR evaluation to satisfy protocol requirements.

## ANNEX B System Check Result

Comparing to the original SAR value provided by MVG, the validation data should be within its specification of 10 %(for 10 g).

Frequency (MHz)	Input Power (mW)	10g SAR (W/Kg)	1g SAR (W/Kg)	10g SAR 1W input power normalized (W/Kg)	1g SAR 1W input power normalized (W/Kg)	10g SAR Standard target (1W) (W/Kg)	1g SAR Standard target (1W) (W/Kg)	10g SAR Deviation	1g SAR Deviation
750	16	0.092	0.138	5.75	8.63	5.55	8.49	3.60%	1.59%
835	16	0.106	0.163	6.63	10.19	6.22	9.56	6.51%	6.56%
1800	16	0.312	0.588	19.50	36.75	20.10	38.40	-2.99%	-4.30%
1900	16	0.322	0.630	20.13	39.38	20.50	39.70	-1.83%	-0.82%
2450	16	0.352	0.793	22.00	49.56	23.86	54.4	-7.80%	-8.89%
5200	13	0.288	1.019	22.15	78.38	21.29	73.88	4.05%	6.09%
5800	13	0.277	0.981	21.31	75.46	21.5	74.21	-0.90%	1.68%

## System Performance Check Data (750 MHz)

### System check at 750 MHz

Date of measurement: 9/5/2024

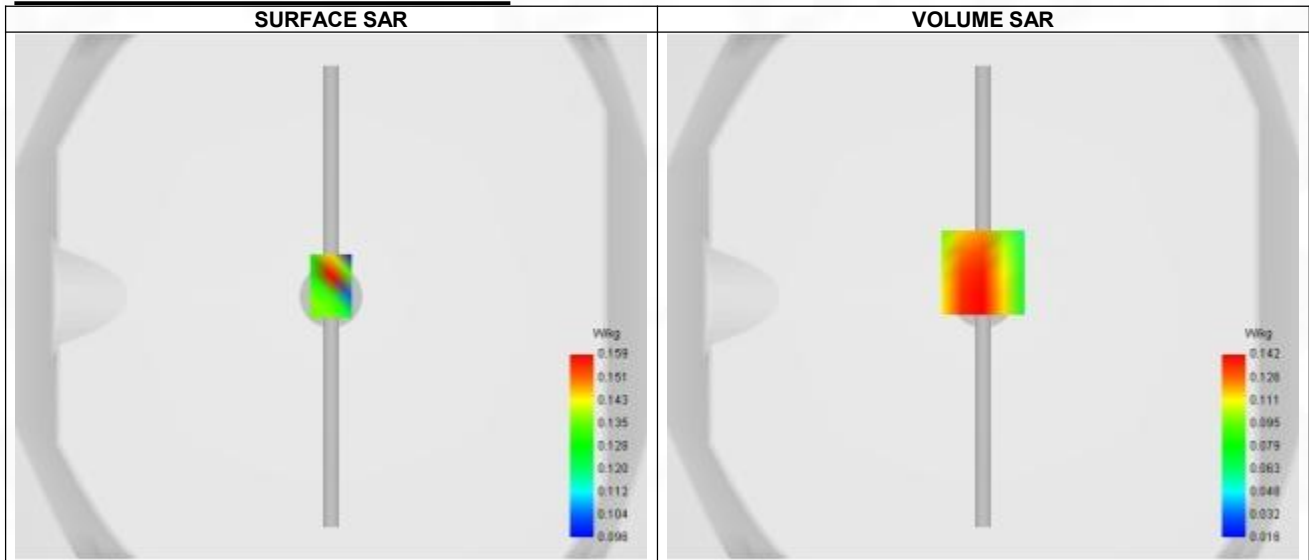
#### A. Experimental conditions.

Probe	SN 04/22 EPGO365
ConvF	1.65
Area Scan	dx=8mm dy=8mm, Adaptive 1 max
Zoom Scan	5x5x7, dx=8mm dy=8mm dz=5mm, Complete
Phantom	Validation plane
Device Position	Dipole
Band	CW750
Channels	Middle
Signal	CW

#### B. Permittivity

Frequency (MHz)	750.000
Relative permittivity (real part)	41.800
Relative permittivity (imaginary part)	21.460
Conductivity (S/m)	0.860

#### C. SAR Surface and Volume



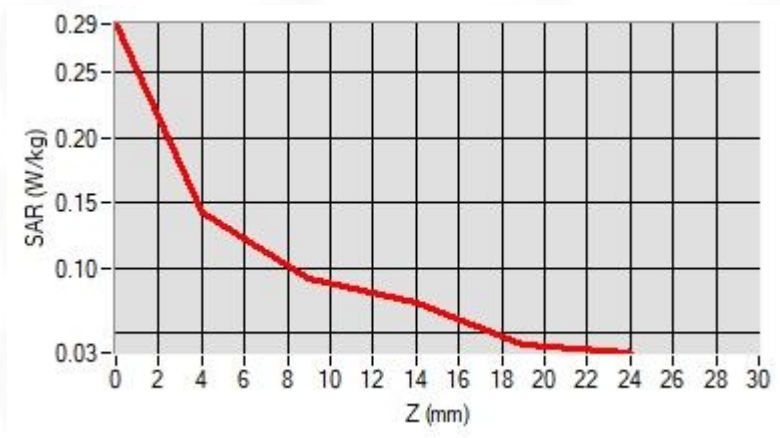
Maximum location: X=0.00, Y=9.00 ; SAR Peak: 0.20 W/kg

#### D. SAR 1g & 10g

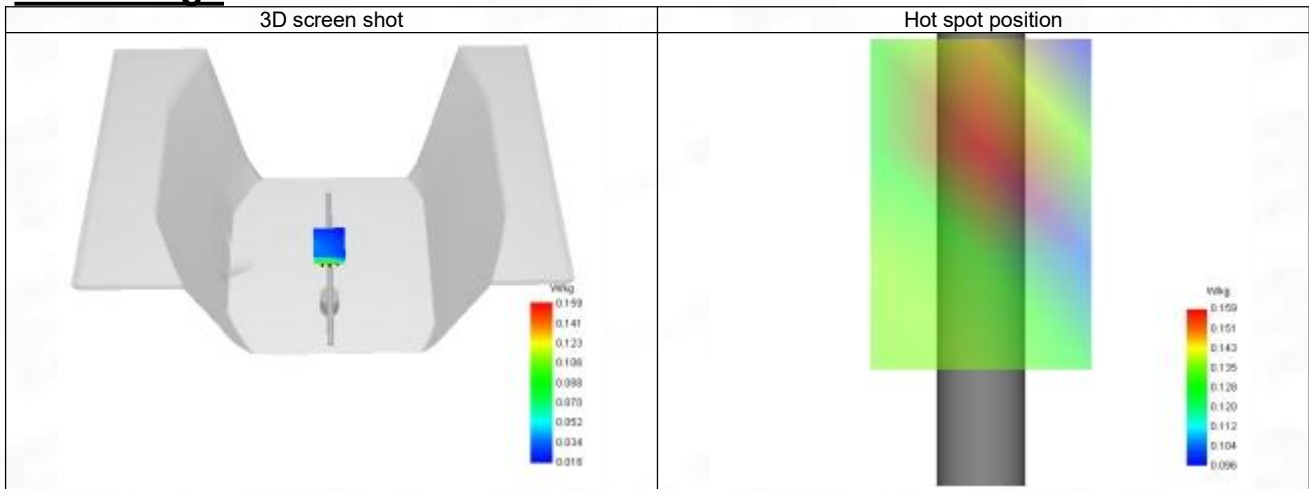
SAR 10g (W/Kg)	0.092
SAR 1g (W/Kg)	0.138
Variation (%)	-2.190
Horizontal validation criteria: minimum distance (mm)	9.285
Vertical validation criteria: SAR ratio M2/M1 (%)	64.79%

#### E. Z Axis Scan

Z (mm)	0.00	4.00	9.00	14.00	19.00
SAR (W/Kg)	0.287	0.142	0.092	0.073	0.042



### F. 3D Image



## System Performance Check Data (835 MHz)

### System check at 835 MHz

Date of measurement: 9/5/2024

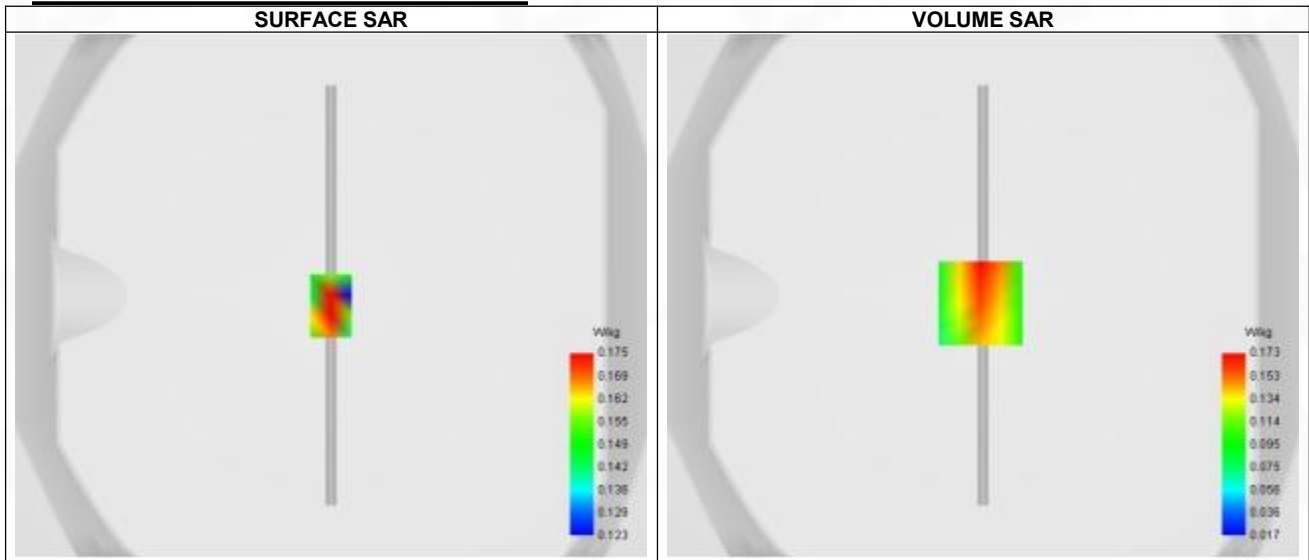
#### **A. Experimental conditions.**

Probe	SN 04/22 EPGO365
ConvF	1.68
Area Scan	dx=8mm dy=8mm, Adaptive 1 max
Zoom Scan	5x5x7, dx=8mm dy=8mm dz=5mm, Complete
Phantom	Validation plane
Device Position	Dipole
Band	CW835
Channels	Middle
Signal	CW

#### **B. Permittivity**

Frequency (MHz)	835.000
Relative permittivity (real part)	41.410
Relative permittivity (imaginary part)	19.490
Conductivity (S/m)	0.870

#### **C. SAR Surface and Volume**



Maximum location: X=-1.00, Y=-3.00 ; SAR Peak: 0.26 W/kg

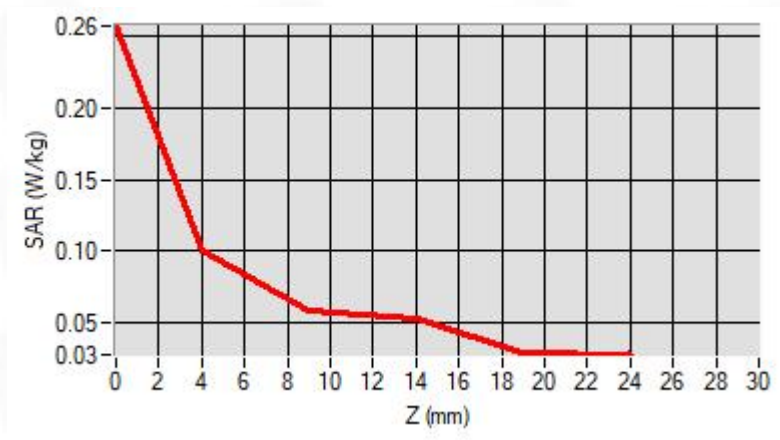
#### **D. SAR 1g & 10g**

SAR 10g (W/Kg)	0.106
SAR 1g (W/Kg)	0.163
Variation (%)	-3.390
Horizontal validation criteria: minimum distance (mm)	8.487
Vertical validation criteria: SAR ratio M2/M1 (%)	66.47%

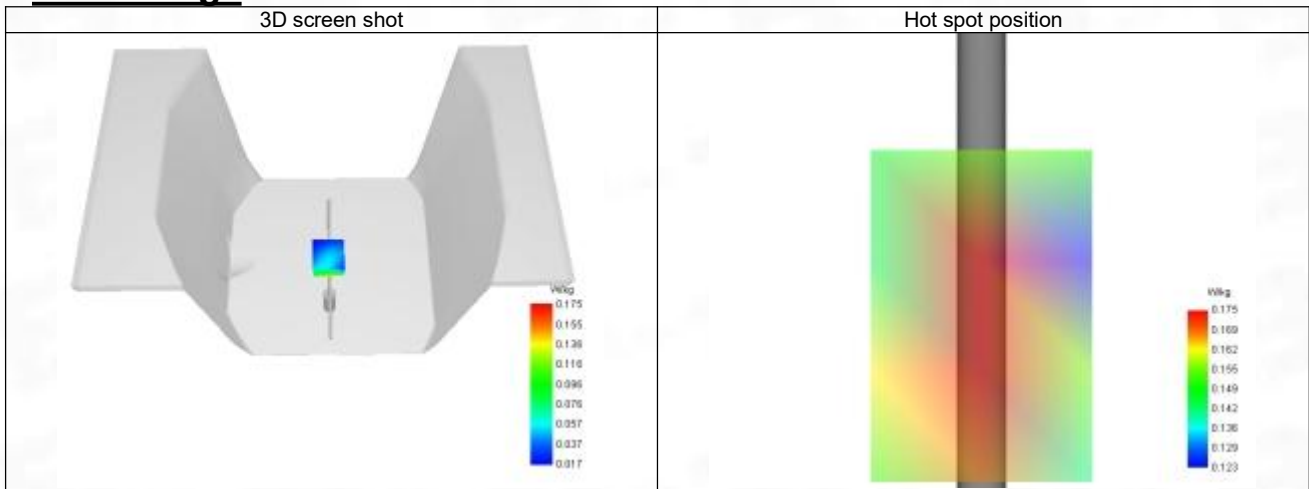
#### **E. Z Axis Scan**

Z (mm)	0.00	4.00	9.00	14.00	19.00
SAR (W/Kg)	0.059	0.173	0.115	0.061	0.072





### F. 3D Image



## System Performance Check Data (1800 MHz)

### System check at 1800 MHz

Date of measurement: 10/5/2024

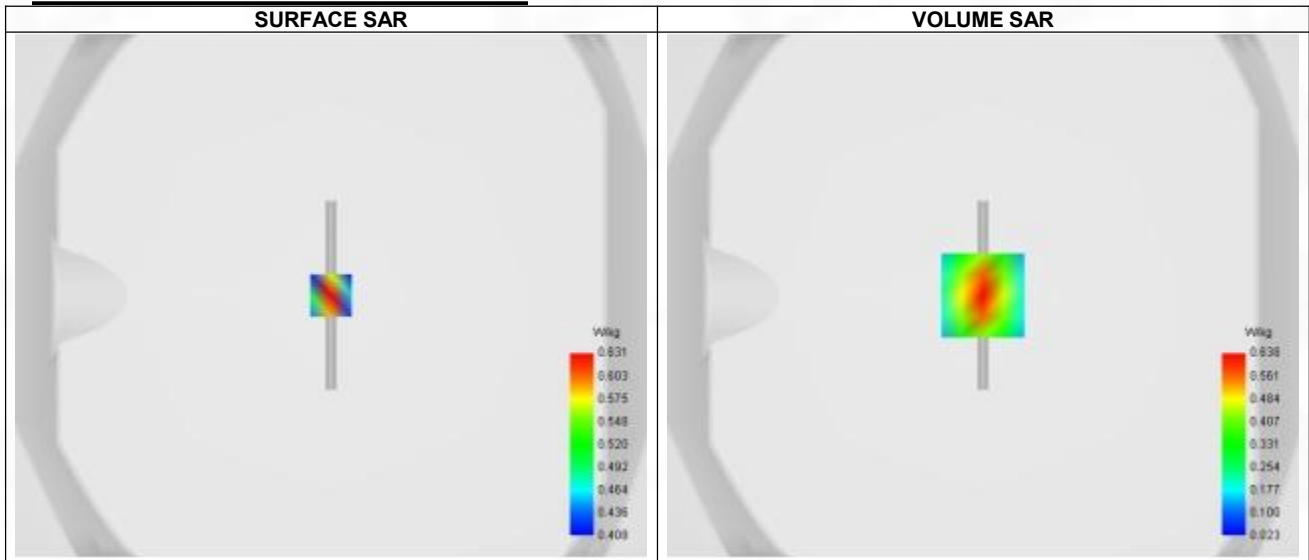
#### A. Experimental conditions.

Probe	SN 04/22 EPGO365
ConvF	1.96
Area Scan	dx=8mm dy=8mm, Adaptive 1 max
Zoom Scan	5x5x7, dx=8mm dy=8mm dz=5mm, Complete
Phantom	Validation plane
Device Position	Dipole
Band	CW1800
Channels	Middle
Signal	CW

#### B. Permittivity

Frequency (MHz)	1800.000
Relative permittivity (real part)	39.910
Relative permittivity (imaginary part)	14.090
Conductivity (S/m)	1.370

#### C. SAR Surface and Volume



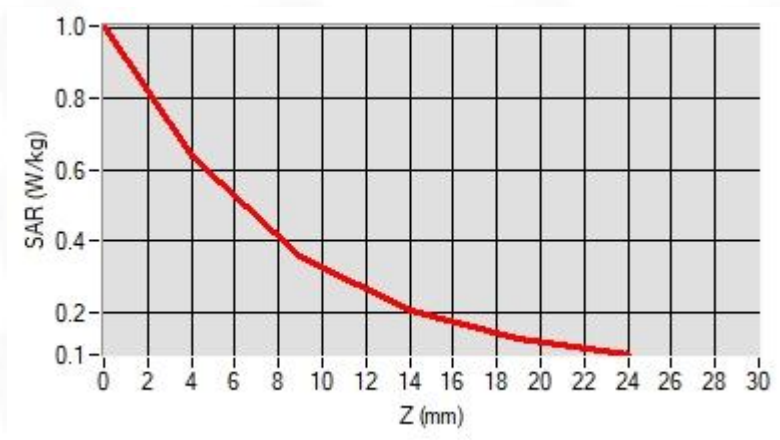
Maximum location: X=0.00, Y=0.00 ; SAR Peak: 1.00 W/kg

#### D. SAR 1g & 10g

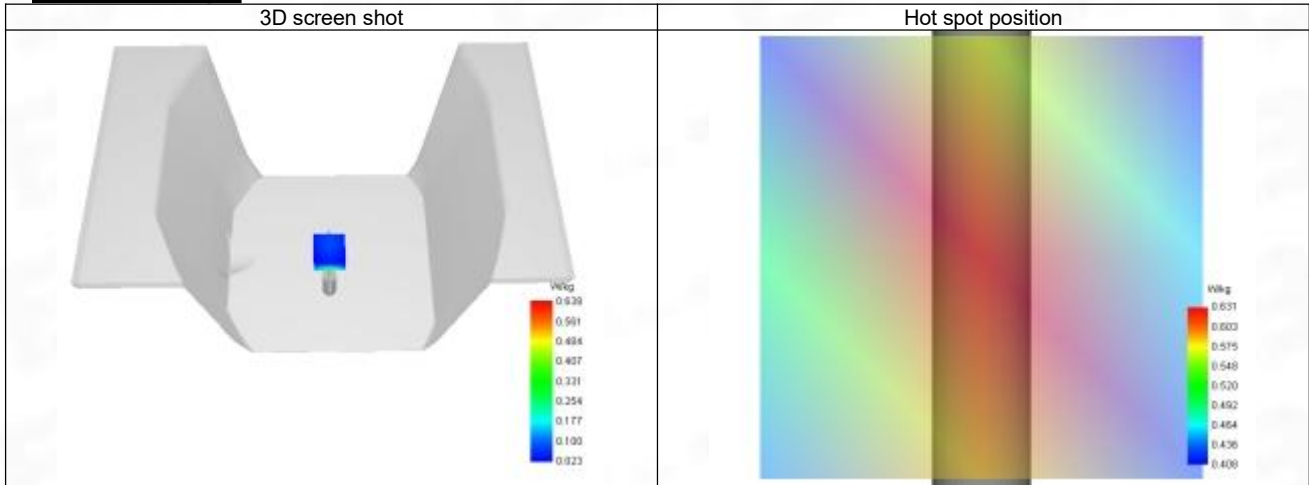
SAR 10g (W/Kg)	0.312
SAR 1g (W/Kg)	0.588
Variation (%)	-0.250
Horizontal validation criteria: minimum distance (mm)	8.698
Vertical validation criteria: SAR ratio M2/M1 (%)	55.80%

#### E. Z Axis Scan

Z (mm)	0.00	4.00	9.00	14.00	19.00
SAR (W/Kg)	1.003	0.638	0.356	0.204	0.127



### F. 3D Image



## System Performance Check Data (1900 MHz)

### System check at 1900 MHz

Date of measurement: 10/5/2024

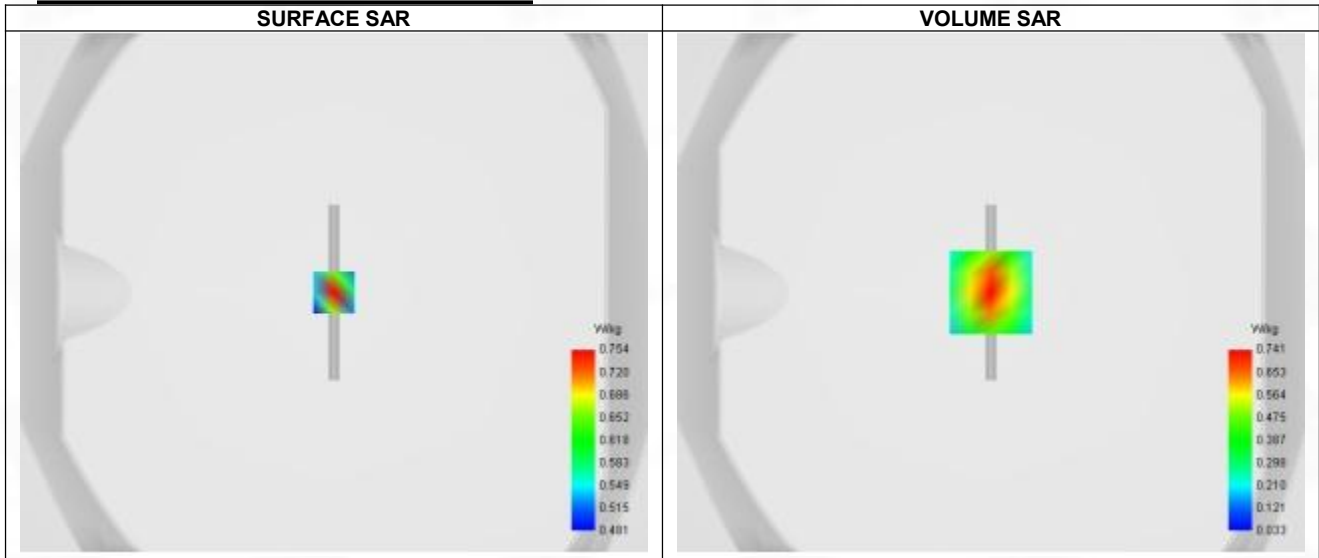
#### A. Experimental conditions.

Probe	SN 04/22 EPG0365
ConvF	2.24
Area Scan	dx=8mm dy=8mm, Adaptive 1 max
Zoom Scan	5x5x7, dx=8mm dy=8mm dz=5mm, Complete
Phantom	Validation plane
Device Position	Dipole
Band	CW1900
Channels	Middle
Signal	CW

#### B. Permittivity

Frequency (MHz)	1900.000
Relative permittivity (real part)	39.880
Relative permittivity (imaginary part)	13.380
Conductivity (S/m)	1.410

#### C. SAR Surface and Volume



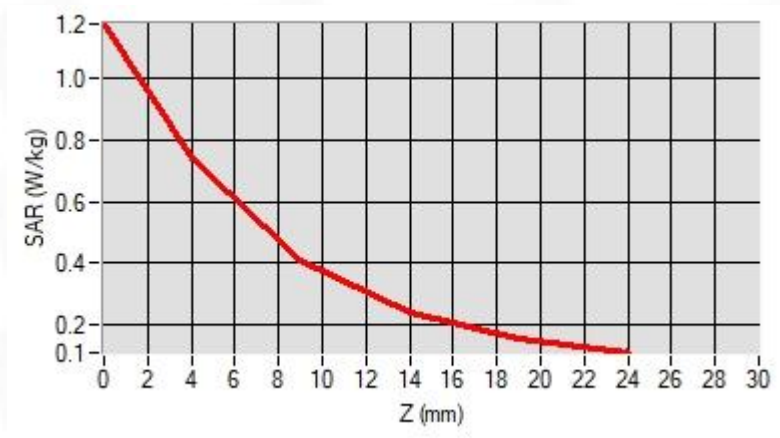
Maximum location: X=0.00, Y=0.00 ; SAR Peak: 1.18 W/kg

#### D. SAR 1g & 10g

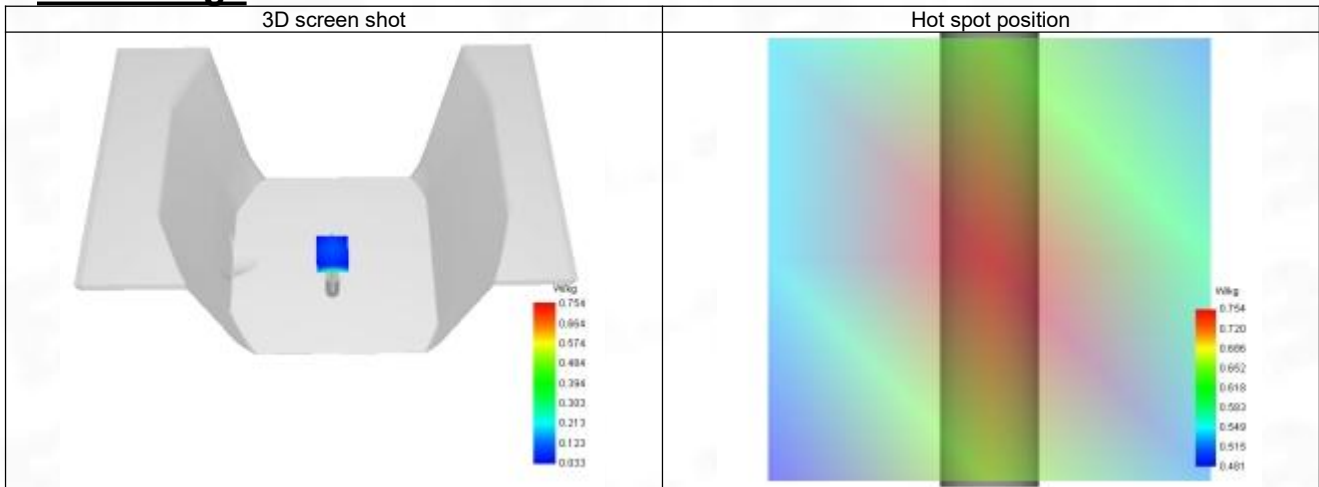
SAR 10g (W/Kg)	0.322
SAR 1g (W/Kg)	0.630
Variation (%)	-2.080
Horizontal validation criteria: minimum distance (mm)	8.699
Vertical validation criteria: SAR ratio M2/M1 (%)	52.96%

#### E. Z Axis Scan

Z (mm)	0.00	4.00	9.00	14.00	19.00
SAR (W/Kg)	1.201	0.759	0.402	0.239	0.156



### F. 3D Image



## System Performance Check Data (2450 MHz)

### System check at 2450 MHz

Date of measurement: 111/5/2024

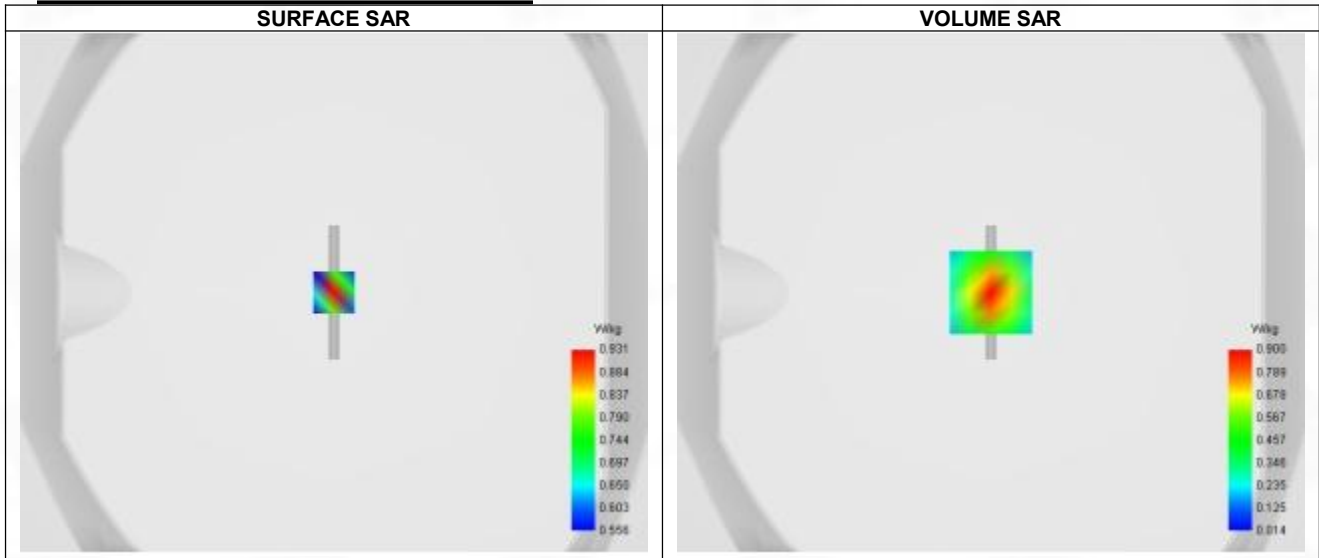
#### A. Experimental conditions.

Probe	SN 04/22 EPGO365
ConvF	2.36
Area Scan	dx=8mm dy=8mm, Adaptive 1 max
Zoom Scan	5x5x7, dx=5mm dy=5mm dz=5mm, Complete
Phantom	Validation plane
Device Position	Dipole
Band	CW2450
Channels	Middle
Signal	CW

#### B. Permittivity

Frequency (MHz)	2450.000
Relative permittivity (real part)	39.080
Relative permittivity (imaginary part)	13.340
Conductivity (S/m)	1.810

#### C. SAR Surface and Volume



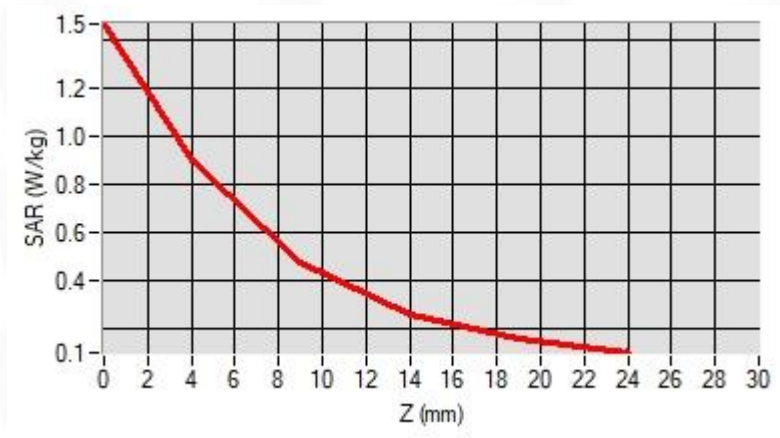
Maximum location: X=0.00, Y=0.00 ; SAR Peak: 1.47 W/kg

#### D. SAR 1g & 10g

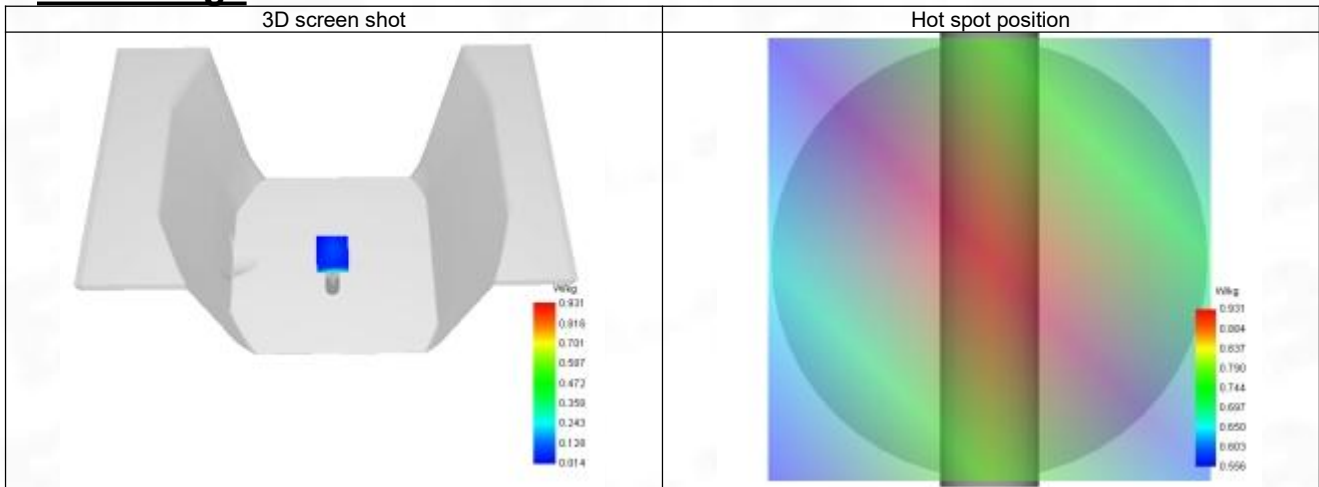
SAR 10g (W/Kg)	0.352
SAR 1g (W/Kg)	0.793
Variation (%)	-2.570
Horizontal validation criteria: minimum distance (mm)	9.787
Vertical validation criteria: SAR ratio M2/M1 (%)	53.00%

#### E. Z Axis Scan

Z (mm)	0.00	4.00	9.00	14.00	19.00
SAR (W/Kg)	1.466	0.900	0.477	0.261	0.158



### F. 3D Image



## System Performance Check Data (5200 MHz)

### System check at 5200 MHz

Date of measurement: 13/5/2024

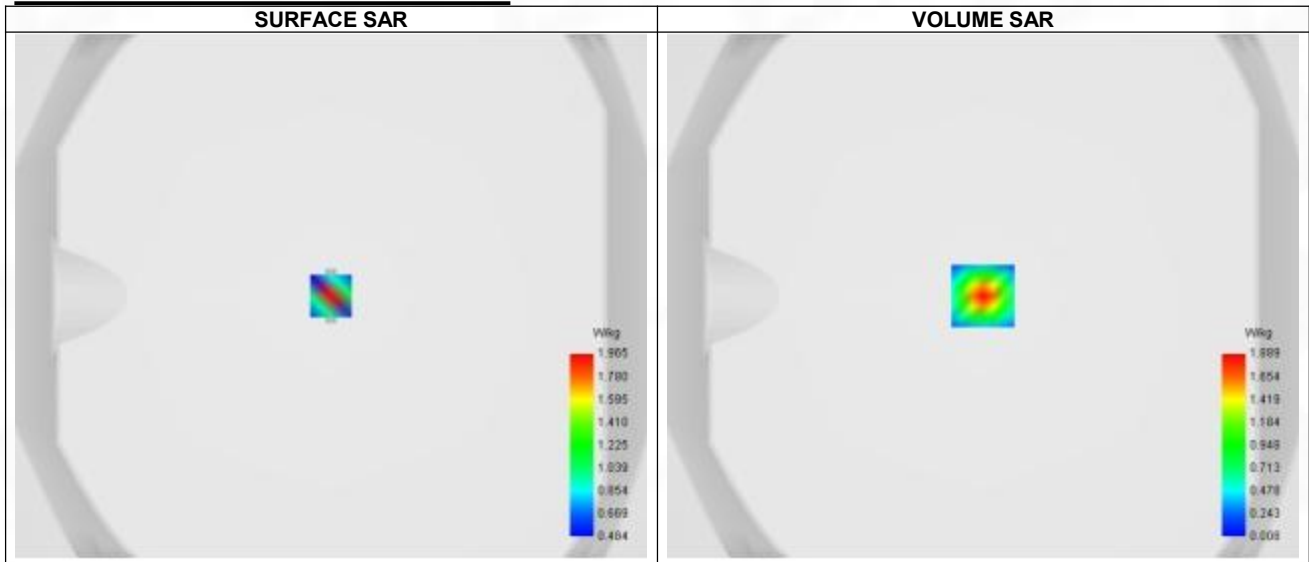
#### **A. Experimental conditions.**

Probe	SN 04/22 EPG0365
ConvF	2.24
Area Scan	dx=8mm dy=8mm, Adaptive 1 max
Zoom Scan	7x7x12,dx=4mm dy=4mm dz=2mm,Complete
Phantom	Validation plane
Device Position	Dipole
Band	CW5200
Channels	Middle
Signal	CW

#### **B. Permittivity**

Frequency (MHz)	5200.000
Relative permittivity (real part)	35.880
Relative permittivity (imaginary part)	16.250
Conductivity (S/m)	4.700

#### **C. SAR Surface and Volume**



Maximum location: X=0.00, Y=0.00 ; SAR Peak: 3.38 W/kg

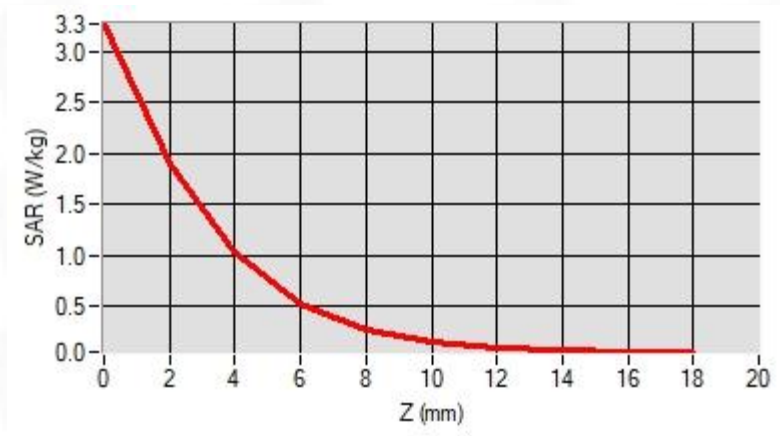
#### **D. SAR 1g & 10g**

SAR 10g (W/Kg)	0.288
SAR 1g (W/Kg)	1.019
Variation (%)	-3.400
Horizontal validation criteria: minimum distance (mm)	6.284
Vertical validation criteria: SAR ratio M2/M1 (%)	54.05

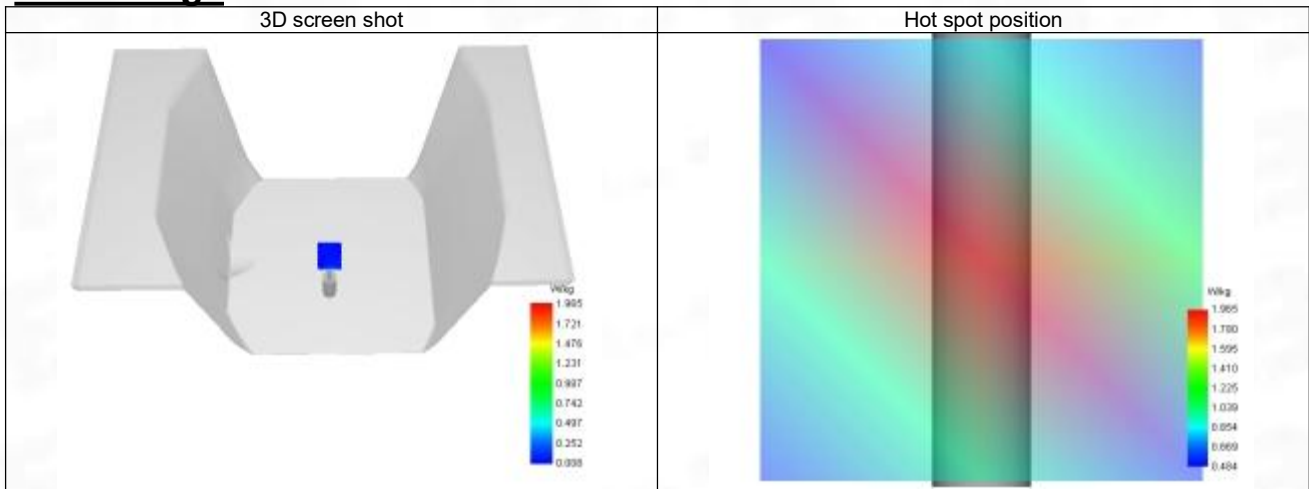
#### **E. Z Axis Scan**

Z (mm)	0.00	2.00	4.00	6.00	8.00	10.00	12.00	14.00	16.00
SAR (W/Kg)	3.268	1.889	1.021	0.523	0.266	0.142	0.085	0.060	0.052





### F. 3D Image



## System Performance Check Data (5800 MHz)

### System check at 5800 MHz

Date of measurement: 13/5/2024

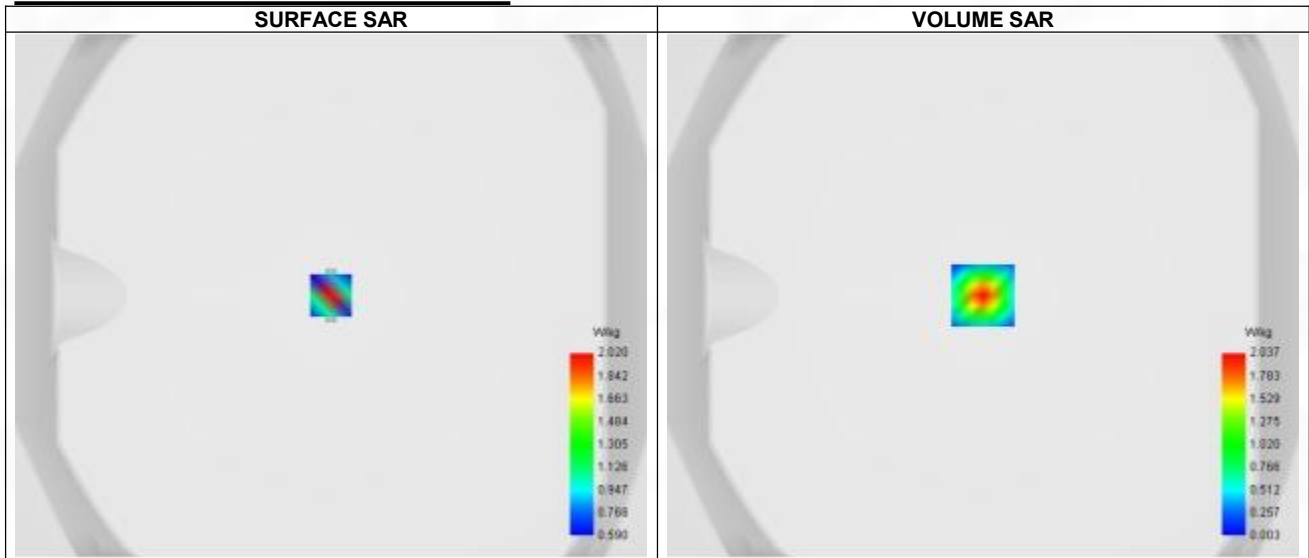
#### **A. Experimental conditions.**

Probe	SN 04/22 EPG0365
ConvF	2.04
Area Scan	dx=8mm dy=8mm, Adaptive 1 max
Zoom Scan	7x7x12,dx=4mm dy=4mm dz=2mm,Complete
Phantom	Validation plane
Device Position	Dipole
Band	CW5800
Channels	Middle
Signal	CW

#### **B. Permittivity**

Frequency (MHz)	5800.000
Relative permittivity (real part)	35.180
Relative permittivity (imaginary part)	16.480
Conductivity (S/m)	5.310

#### **C. SAR Surface and Volume**



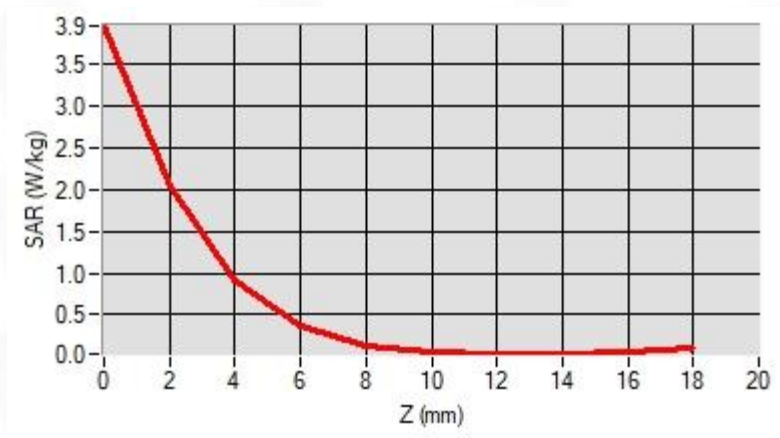
Maximum location: X=0.00, Y=0.00 ; SAR Peak: 4.17 W/kg

#### **D. SAR 1g & 10g**

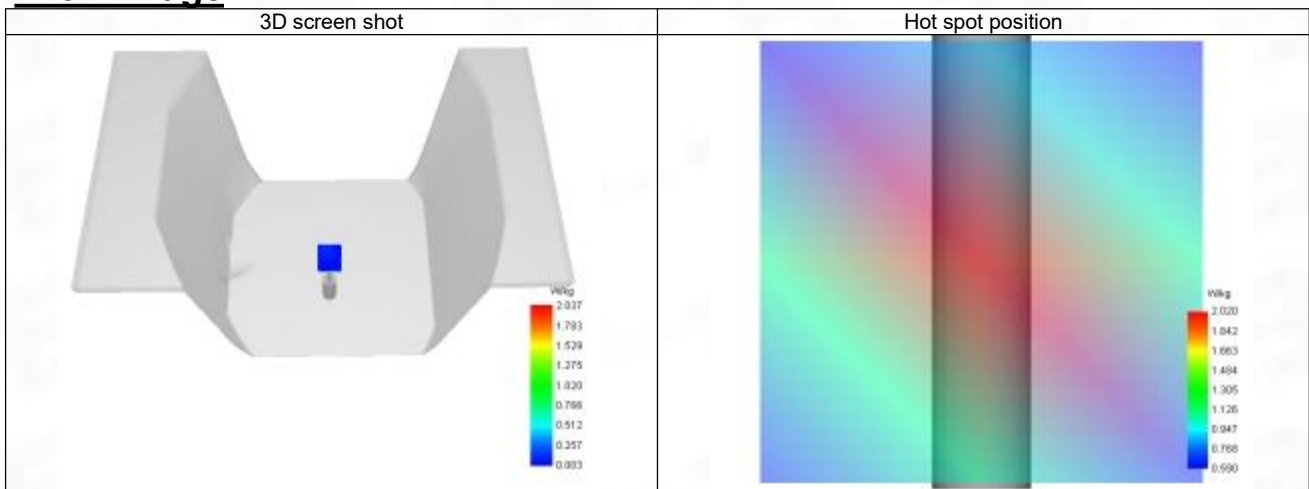
SAR 10g (W/Kg)	0.277
SAR 1g (W/Kg)	0.981
Variation (%)	0.490
Horizontal validation criteria: minimum distance (mm)	7.454
Vertical validation criteria: SAR ratio M2/M1 (%)	44.92%

#### **E. Z Axis Scan**

Z (mm)	0.00	2.00	4.00	6.00	8.00	10.00	12.00	14.00	16.00
SAR (W/Kg)	3.948	2.037	0.915	0.361	0.135	0.055	0.033	0.037	0.059



### F. 3D Image



## ANNEX C Test Data

1-Body with back position in dist. 0mm on Channel 128 in GPRS 850+3slots

### SAR Measurement at GPRS850 (Body, Validation Plane)

Date of measurement: 9/5/2024

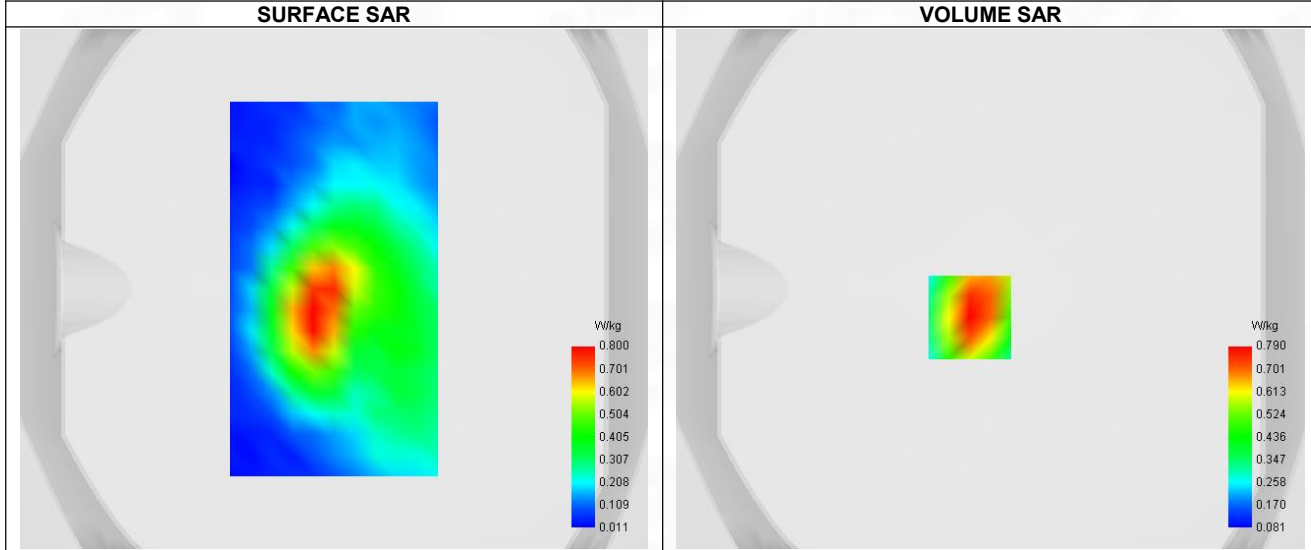
#### A. Experimental conditions.

Probe	SN 04/22 EPGO365
ConvF	1.68
Area Scan	dx=8mm dy=8mm, Adaptive 1 max
Zoom Scan	5x5x7, dx=8mm dy=8mm dz=5mm, Complete
Phantom	Validation plane
Device Position	Body
Band	GPRS850
Channels	Lower (128)
Signal	TDMA (GPRS)
Modulation	GMSK (CS-1)
TX-slots	3

#### B. Permittivity

Frequency (MHz)	824.200
Relative permittivity (real part)	41.460
Relative permittivity (imaginary part)	19.740
Conductivity (S/m)	0.869

#### C. SAR Surface and Volume



Maximum location: X=-8.00, Y=-11.00 ; SAR Peak: 1.11 W/kg

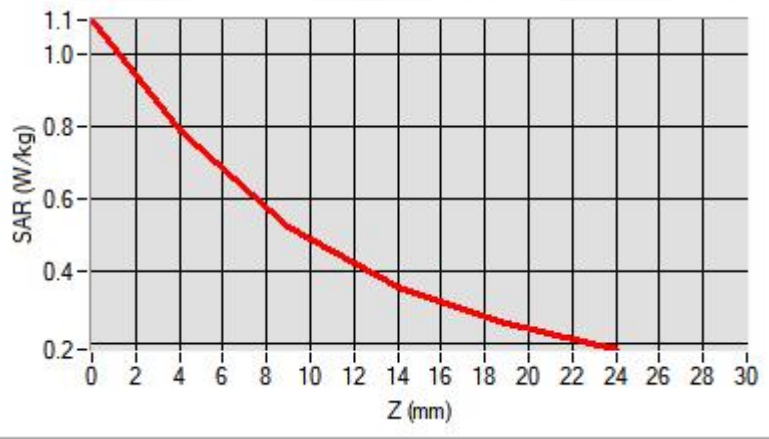
#### D. SAR 1g & 10g

SAR 10g (W/Kg)	0.467
SAR 1g (W/Kg)	0.748
Variation (%)	-3.260
Horizontal validation criteria: minimum distance (mm)	8.000
Vertical validation criteria: SAR ratio M2/M1 (%)	66.33%

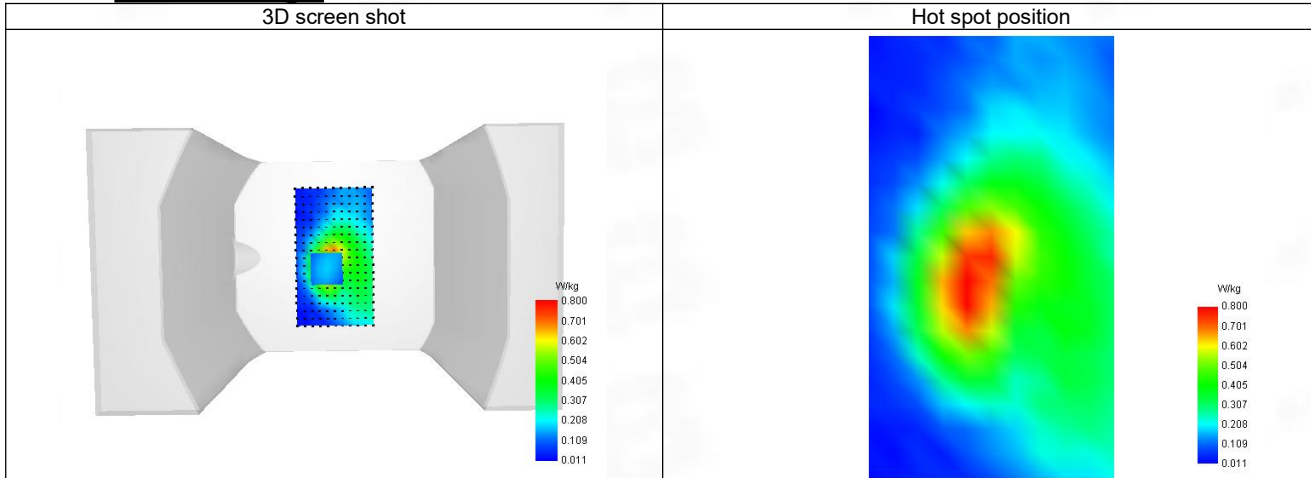
#### E. Z Axis Scan

Z (mm)	0.00	4.00	9.00	14.00	19.00
--------	------	------	------	-------	-------

SAR (W/Kg)	1.098	0.790	0.524	0.357	0.253
------------	-------	-------	-------	-------	-------



### F. 3D Image



**2-Body with back position in dist. 0mm on Channel 512 in GPRS 1900+3slots**

**SAR Measurement at GPRS1900 (Body, Validation Plane)**

Date of measurement: 10/5/2024

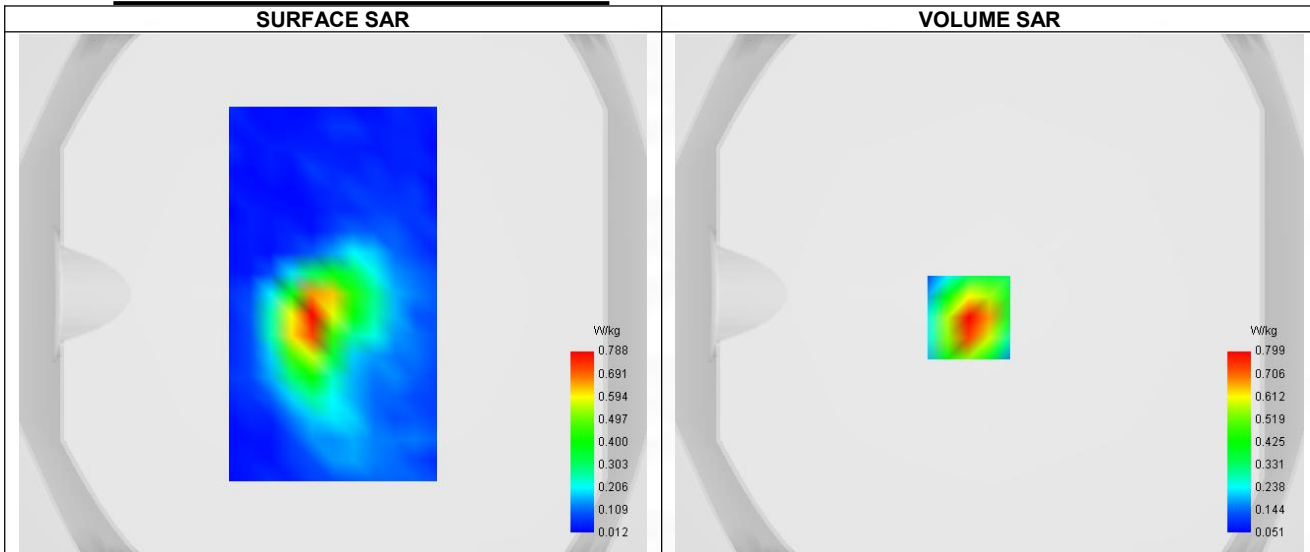
**A. Experimental conditions.**

Probe	SN 04/22 EPG0365
ConvF	2.24
Area Scan	dx=8mm dy=8mm, Adaptive 1 max
Zoom Scan	5x5x7, dx=8mm dy=8mm dz=5mm, Complete
Phantom	Validation plane
Device Position	Body
Band	GPRS1900
Channels	Lower (512)
Signal	TDMA (GPRS)
Modulation	GMSK (CS-1)
TX-slots	3

**B. Permittivity**

Frequency (MHz)	1850.200
Relative permittivity (real part)	39.895
Relative permittivity (imaginary part)	13.734
Conductivity (S/m)	1.390

**C. SAR Surface and Volume**

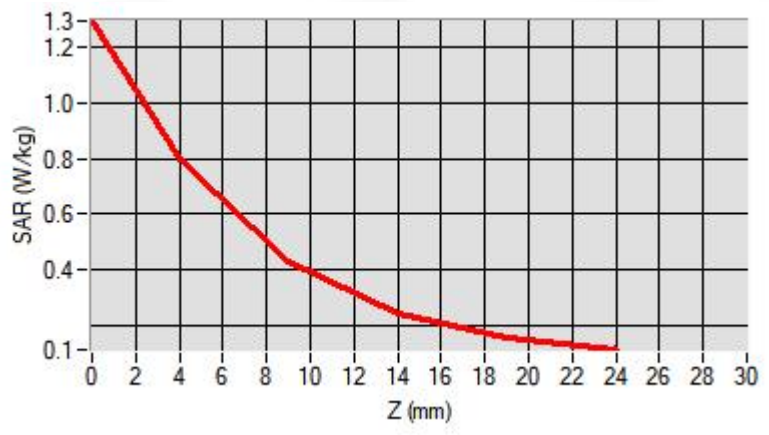


**D. SAR 1g & 10g**

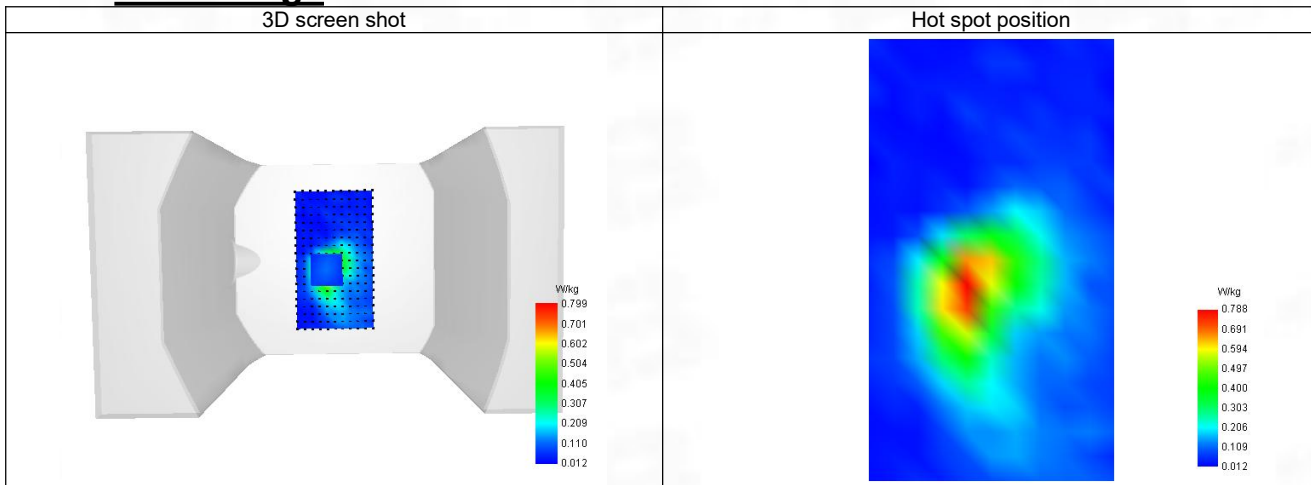
SAR 10g (W/Kg)	0.393
SAR 1g (W/Kg)	0.722
Variation (%)	-2.050
Horizontal validation criteria: minimum distance (mm)	8.000
Vertical validation criteria: SAR ratio M2/M1 (%)	54.19%

**E. Z Axis Scan**

Z (mm)	0.00	4.00	9.00	14.00	19.00
SAR (W/Kg)	1.290	0.799	0.433	0.249	0.163



### F. 3D Image



**3-Body with back position in dist. 0mm on Channel 9538 in WCDMA Band II**

**SAR Measurement at Band 2 (1900) (Body, Validation Plane)**

Date of measurement: 10/5/2024

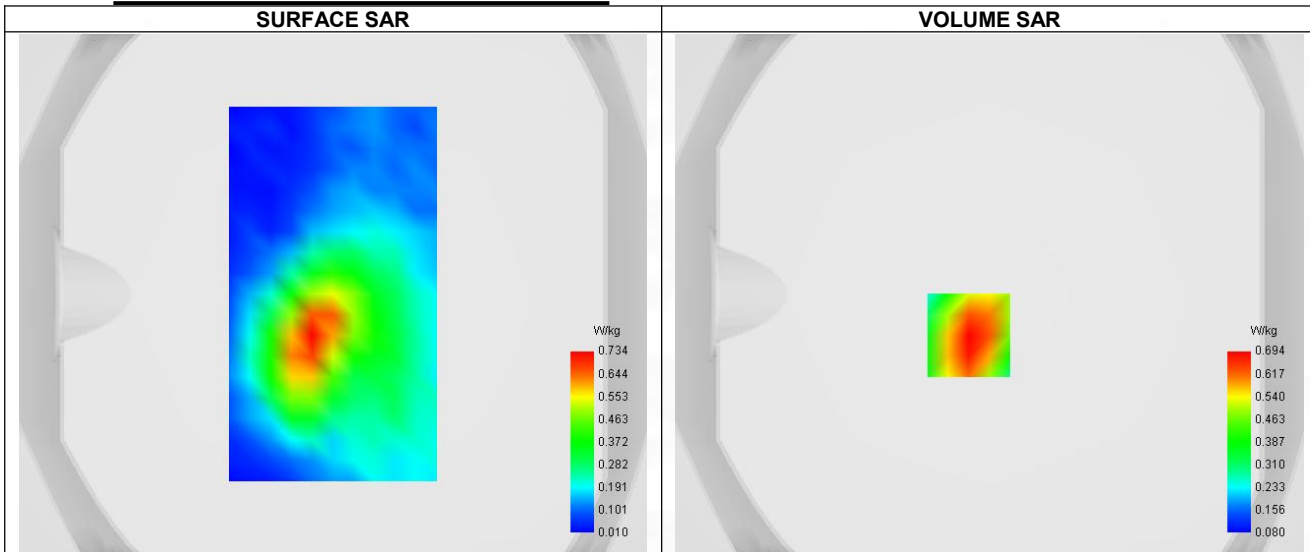
**A. Experimental conditions.**

Probe	SN 04/22 EPG0365
ConvF	2.24
Area Scan	dx=8mm dy=8mm, Adaptive 1 max
Zoom Scan	5x5x7, dx=8mm dy=8mm dz=5mm, Complete
Phantom	Validation plane
Device Position	Body
Band	Band 2 (1900)
Channels	Higher (9538)
Signal	WCDMA
Mode	Release 99
Connection Type	RMC, 12.2 kbps

**B. Permittivity**

Frequency (MHz)	1907.600
Relative permittivity (real part)	39.869
Relative permittivity (imaginary part)	13.379
Conductivity (S/m)	1.416

**C. SAR Surface and Volume**



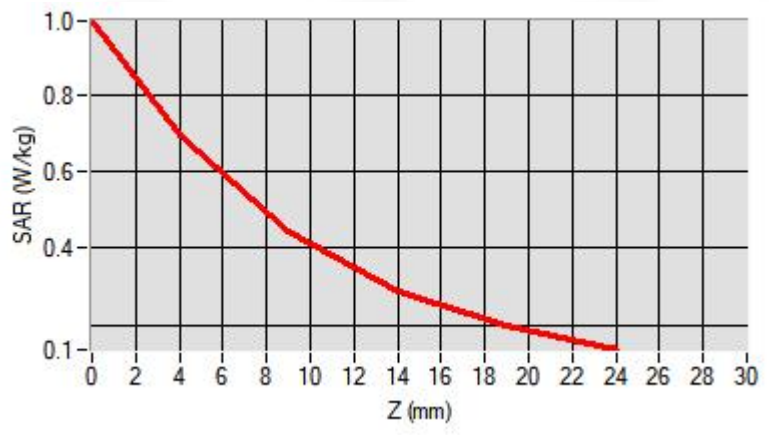
**D. SAR 1g & 10g**

SAR 10g (W/Kg)	0.412
SAR 1g (W/Kg)	0.667
Variation (%)	-3.950
Horizontal validation criteria: minimum distance (mm)	8.000
Vertical validation criteria: SAR ratio M2/M1 (%)	63.69%

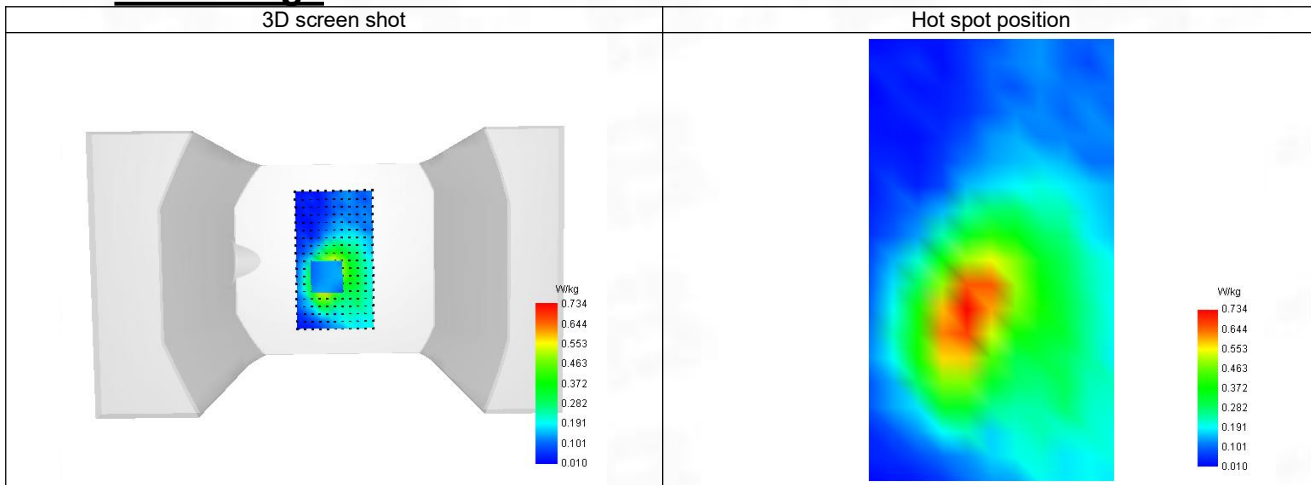
**E. Z Axis Scan**

Z (mm)	0.00	4.00	9.00	14.00	19.00
SAR (W/Kg)	0.992	0.694	0.442	0.289	0.197





### F. 3D Image



**4-Body with back position in dist. 0mm on Channel 4132 in WCDMA Band V**

**SAR Measurement at Band 5 (850) (Body, Validation Plane)**

Date of measurement: 9/5/2024

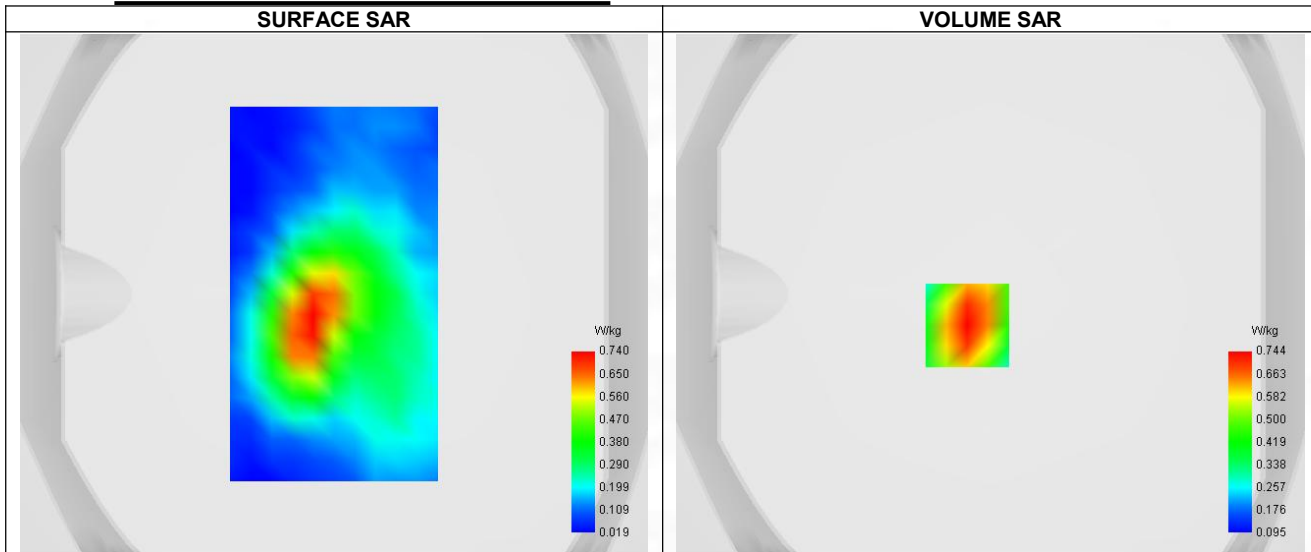
**A. Experimental conditions.**

Probe	SN 04/22 EPG0365
ConvF	1.68
Area Scan	dx=8mm dy=8mm, Adaptive 1 max
Zoom Scan	5x5x7, dx=8mm dy=8mm dz=5mm, Complete
Phantom	Validation plane
Device Position	Body
Band	Band 5 (850)
Channels	Lower (4132)
Signal	WCDMA
Mode	Release 99
Connection Type	RMC, 12.2 kbps

**B. Permittivity**

Frequency (MHz)	826.400
Relative permittivity (real part)	41.449
Relative permittivity (imaginary part)	19.689
Conductivity (S/m)	0.869

**C. SAR Surface and Volume**



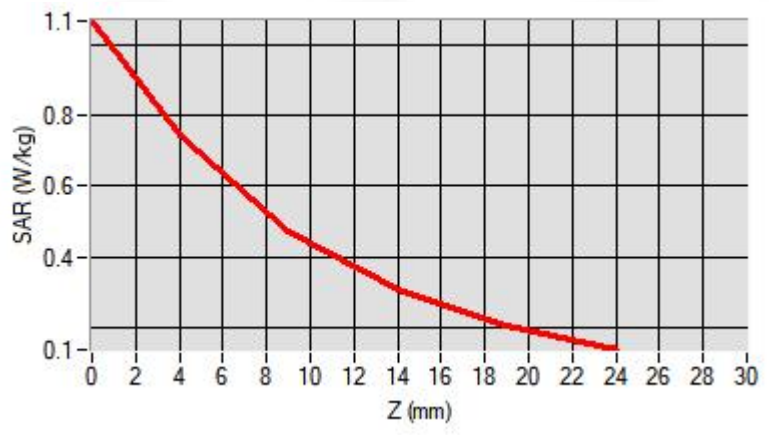
Maximum location: X=-9.00, Y=-12.00 ; SAR Peak: 1.07 W/kg

**D. SAR 1g & 10g**

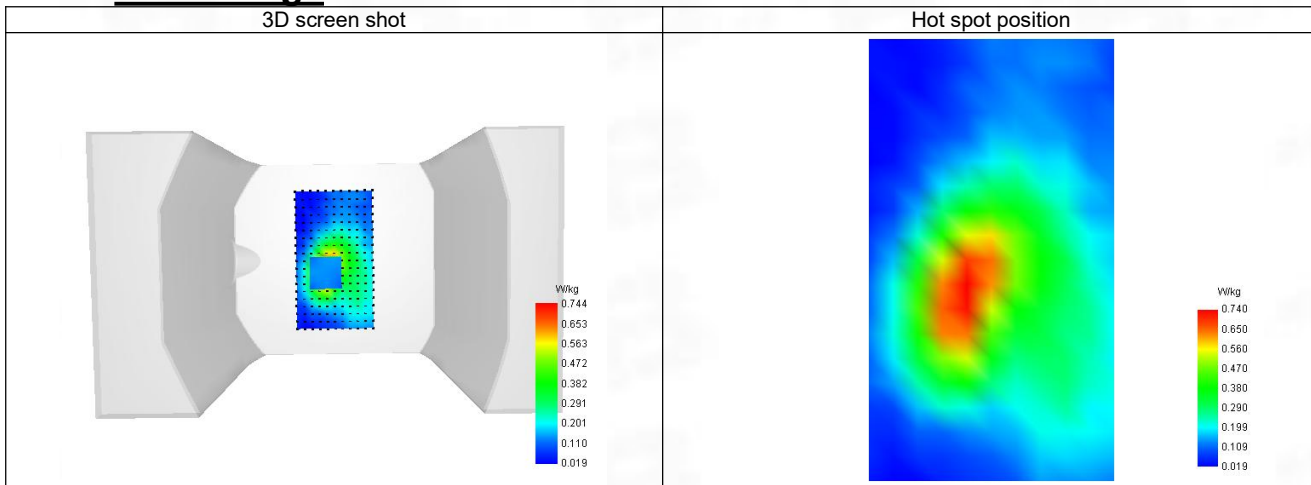
SAR 10g (W/Kg)	0.432
SAR 1g (W/Kg)	0.702
Variation (%)	-2.990
Horizontal validation criteria: minimum distance (mm)	8.000
Vertical validation criteria: SAR ratio M2/M1 (%)	63.44%

**E. Z Axis Scan**

Z (mm)	0.00	4.00	9.00	14.00	19.00
SAR (W/Kg)	1.065	0.744	0.472	0.305	0.205



### F. 3D Image



5-Body with back position in dist. 0mm on Channel 18900 in LTE band 2

**SAR Measurement at LTE band 2 (Body, Validation Plane)**

Date of measurement: 10/5/2024

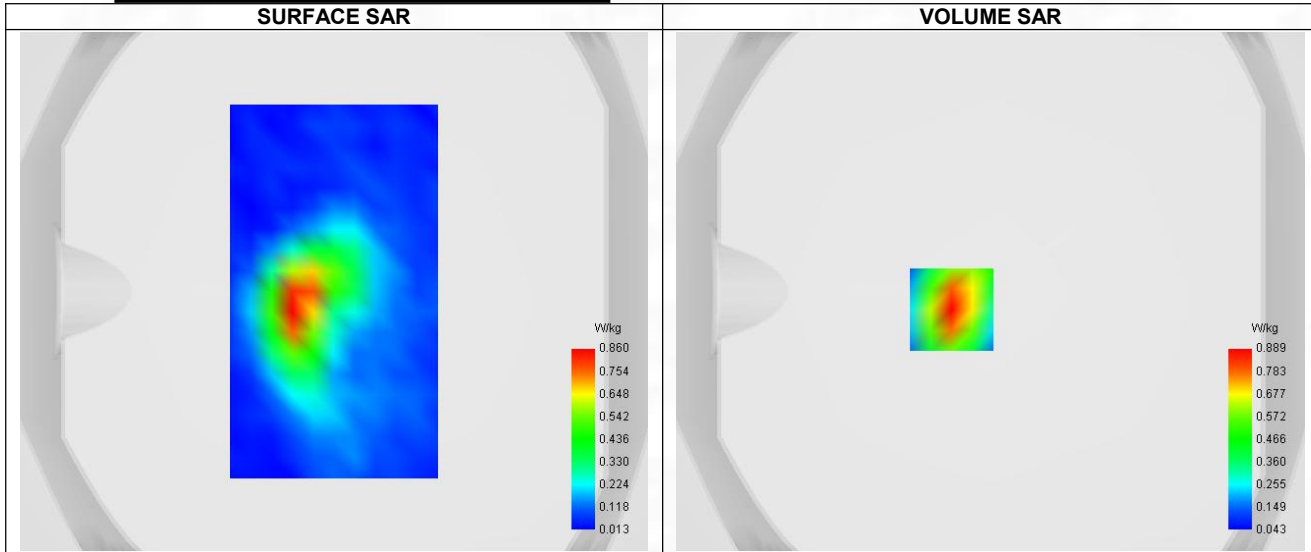
**A. Experimental conditions.**

Probe	SN 04/22 EPG0365
ConvF	2.24
Area Scan	dx=8mm dy=8mm, Adaptive 1 max
Zoom Scan	5x5x7, dx=8mm dy=8mm dz=5mm, Complete
Phantom	Validation plane
Device Position	Body
Band	LTE band 2
Channels	Middle (18900)
Signal	LTE FDD
Cell Bandwidth	20 Mhz
Modulation	SC-OFDM - QPSK
RB offset	50
RB size	1

**B. Permittivity**

Frequency (MHz)	1880.090
Relative permittivity (real part)	39.886
Relative permittivity (imaginary part)	13.521
Conductivity (S/m)	1.402

**C. SAR Surface and Volume**



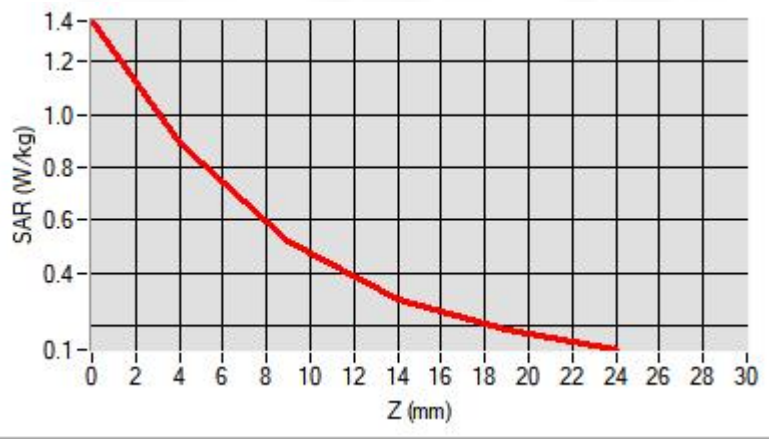
Maximum location: X=-15.00, Y=-7.00 ; SAR Peak: 1.36 W/kg

**D. SAR 1g & 10g**

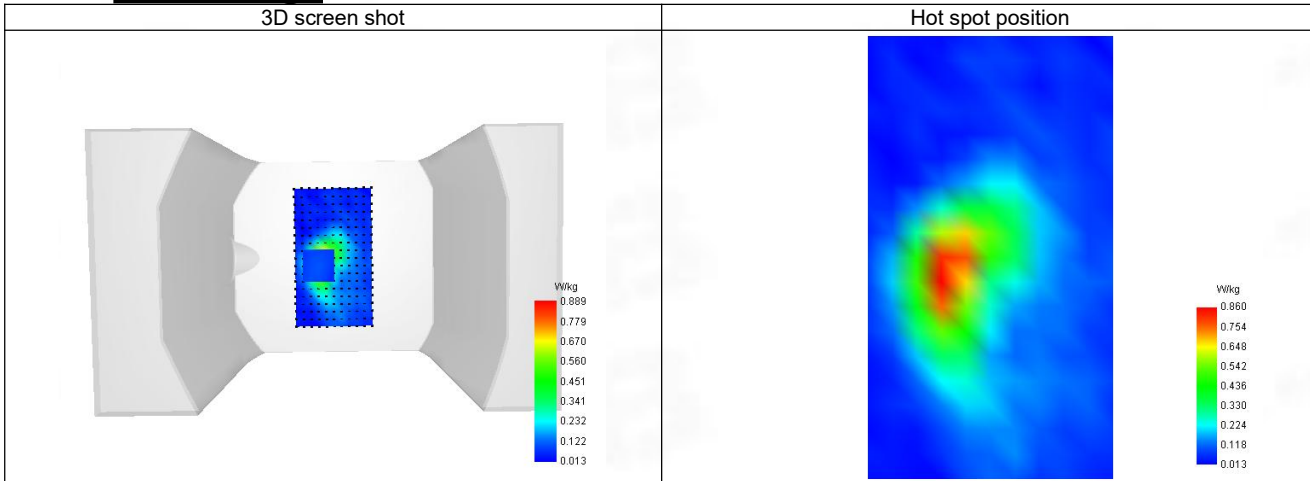
SAR 10g (W/Kg)	0.440
SAR 1g (W/Kg)	0.730
Variation (%)	-0.680
Horizontal validation criteria: minimum distance (mm)	8.000
Vertical validation criteria: SAR ratio M2/M1 (%)	57.93%

**E. Z Axis Scan**

Z (mm)	0.00	4.00	9.00	14.00	19.00
SAR (W/Kg)	1.353	0.889	0.515	0.300	0.182



### F. 3D Image



**6-Body with back position in dist. 0mm on Channel 20300 in LTE band 4**

**SAR Measurement at LTE band 4 (Body, Validation Plane)**

Date of measurement: 10/5/2024

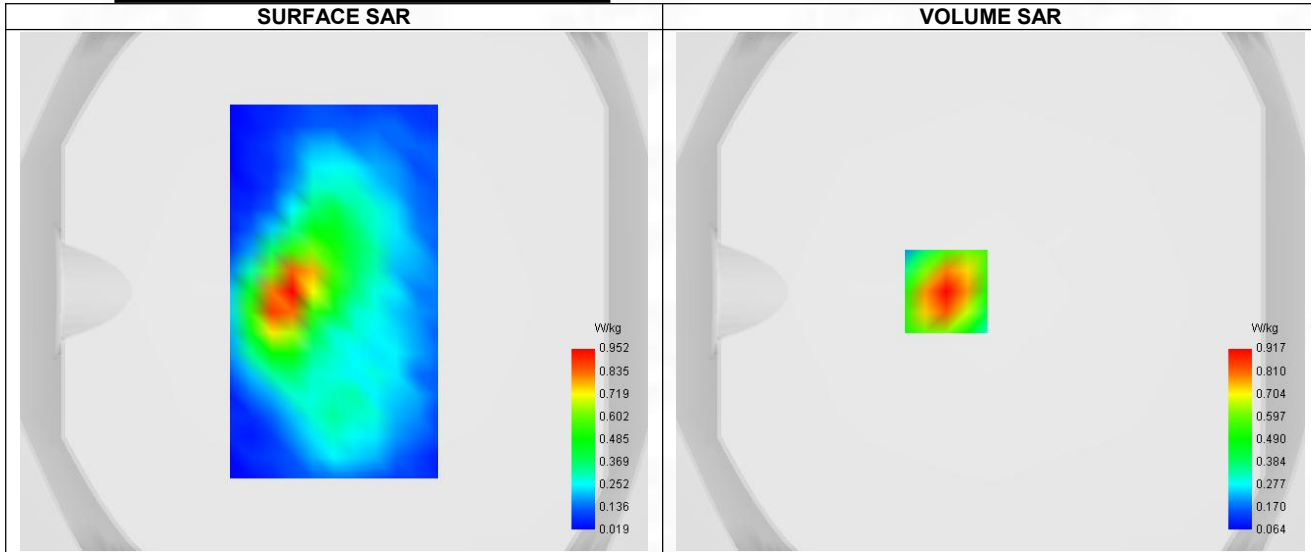
**A. Experimental conditions.**

Probe	SN 04/22 EPG0365
ConvF	1.96
Area Scan	dx=8mm dy=8mm, Adaptive 1 max
Zoom Scan	5x5x7, dx=8mm dy=8mm dz=5mm, Complete
Phantom	Validation plane
Device Position	Body
Band	LTE band 4
Channels	Higher (20300)
Signal	LTE FDD
Cell Bandwidth	20 Mhz
Modulation	SC-OFDM - QPSK
RB offset	50
RB size	1

**B. Permittivity**

Frequency (MHz)	1745.090
Relative permittivity (real part)	39.995
Relative permittivity (imaginary part)	14.397
Conductivity (S/m)	1.342

**C. SAR Surface and Volume**

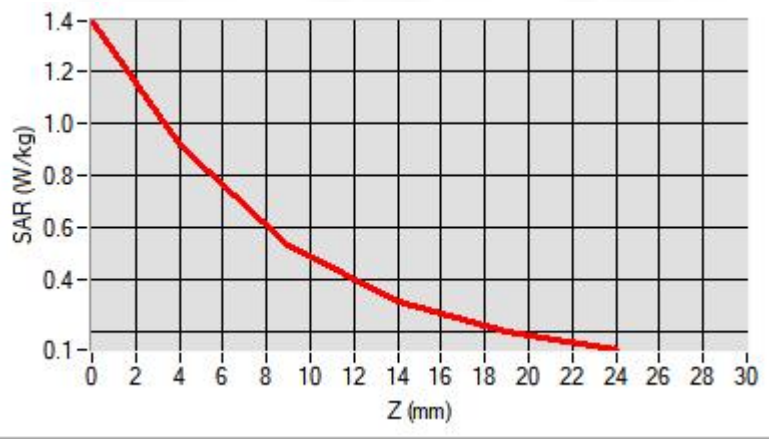


**D. SAR 1g & 10g**

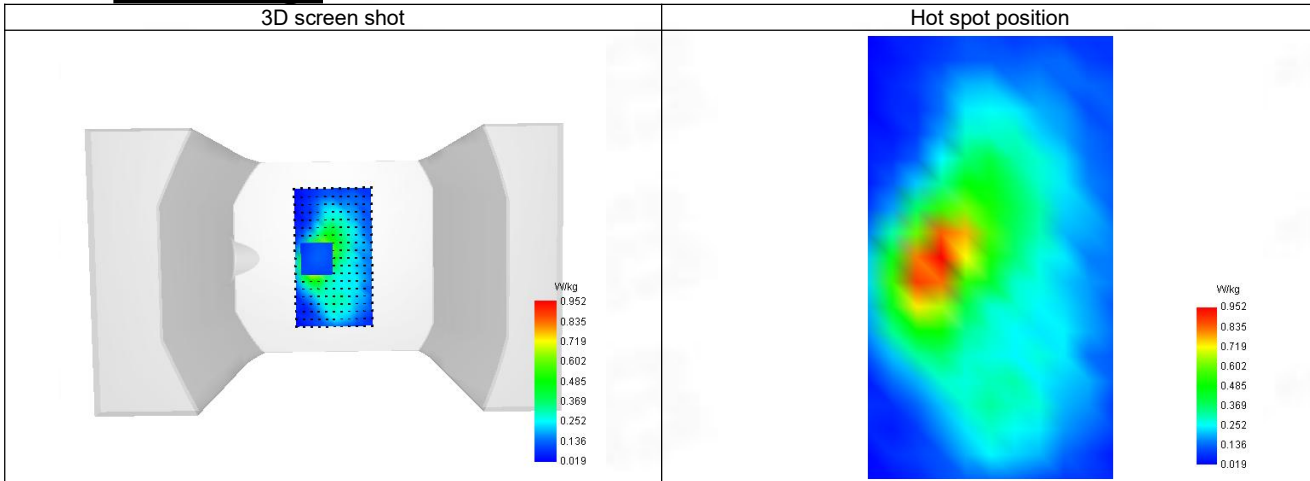
SAR 10g (W/Kg)	0.488
SAR 1g (W/Kg)	0.768
Variation (%)	-1.740
Horizontal validation criteria: minimum distance (mm)	8.000
Vertical validation criteria: SAR ratio M2/M1 (%)	58.34%

**E. Z Axis Scan**

Z (mm)	0.00	4.00	9.00	14.00	19.00
SAR (W/Kg)	1.397	0.917	0.535	0.319	0.203



### F. 3D Image



**7-Body with back position in dist. 0mm on Channel 20525 in LTE band 5**

**SAR Measurement at LTE band 5 (Body, Validation Plane)**

Date of measurement: 9/5/2024

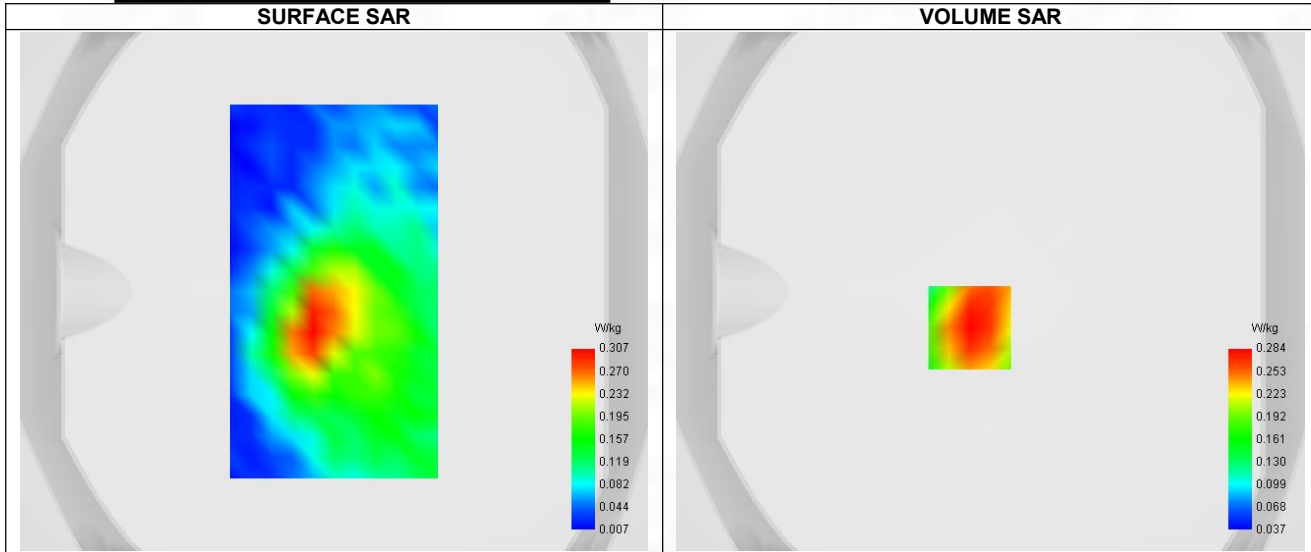
**A. Experimental conditions.**

Probe	SN 04/22 EPG0365
ConvF	1.68
Area Scan	dx=8mm dy=8mm, Adaptive 1 max
Zoom Scan	5x5x7, dx=8mm dy=8mm dz=5mm, Complete
Phantom	Validation plane
Device Position	Body
Band	LTE band 5
Channels	Middle (20525)
Signal	LTE FDD
Cell Bandwidth	10 Mhz
Modulation	SC-OFDM - QPSK
RB offset	25
RB size	1

**B. Permittivity**

Frequency (MHz)	836.590
Relative permittivity (real part)	41.408
Relative permittivity (imaginary part)	19.481
Conductivity (S/m)	0.871

**C. SAR Surface and Volume**



Maximum location: X=-8.00, Y=-14.00 ; SAR Peak: 0.42 W/kg

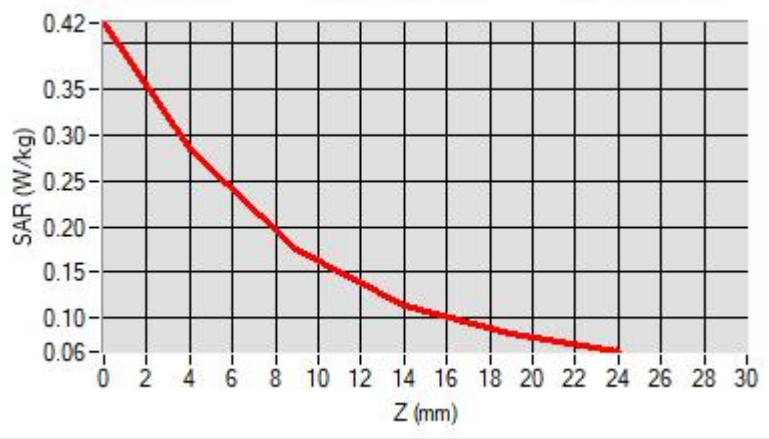
**D. SAR 1g & 10g**

SAR 10g (W/Kg)	0.172
SAR 1g (W/Kg)	0.272
Variation (%)	-2.550
Horizontal validation criteria: minimum distance (mm)	8.000
Vertical validation criteria: SAR ratio M2/M1 (%)	61.62%

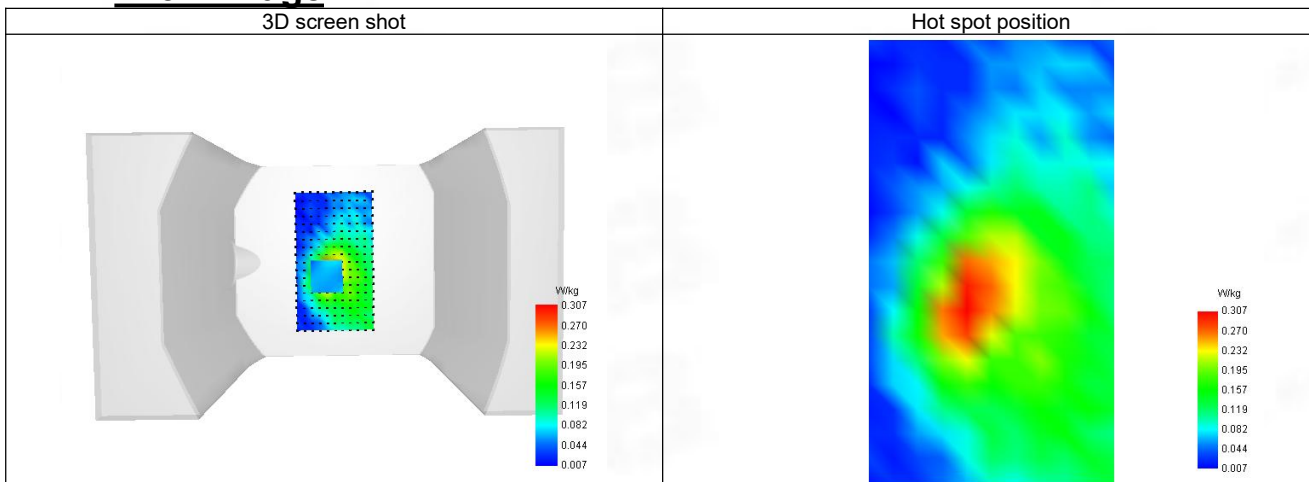
**E. Z Axis Scan**



Z (mm)	0.00	4.00	9.00	14.00	19.00
SAR (W/Kg)	0.421	0.284	0.175	0.115	0.083



### F. 3D Image



**8-Body with back position in dist. 0mm on Channel 23095 in LTE band 12**

**SAR Measurement at LTE band 12 (Body, Validation Plane)**

Date of measurement: 9/5/2024

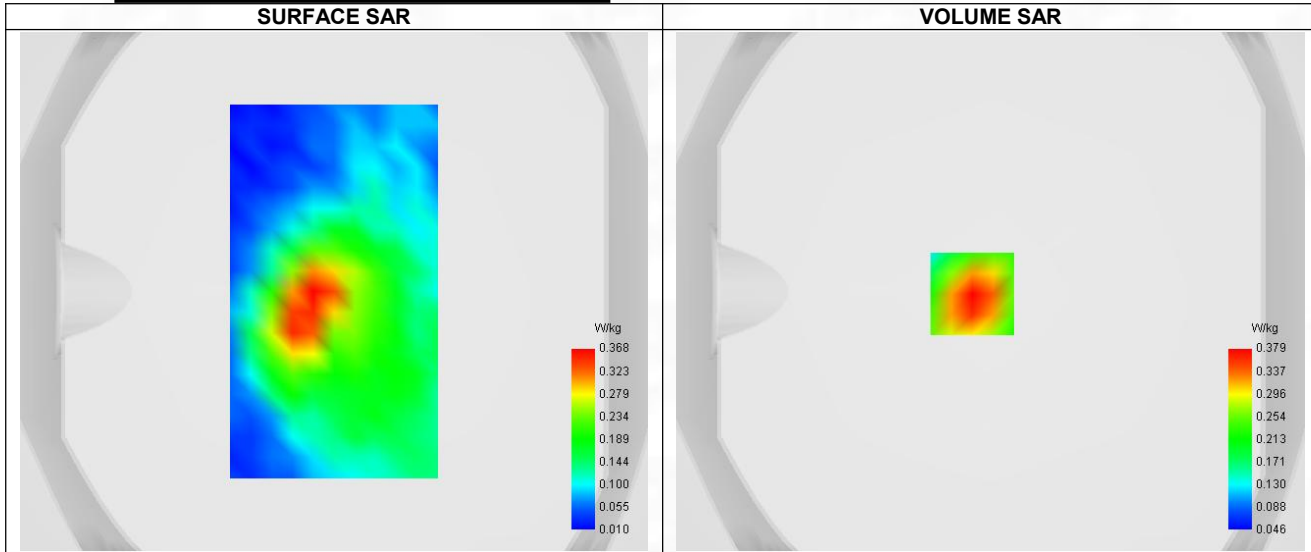
**A. Experimental conditions.**

Probe	SN 04/22 EPG0365
ConvF	1.65
Area Scan	dx=8mm dy=8mm, Adaptive 1 max
Zoom Scan	5x5x7, dx=8mm dy=8mm dz=5mm, Complete
Phantom	Validation plane
Device Position	Body
Band	LTE band 12
Channels	Middle (23095)
Signal	LTE FDD
Cell Bandwidth	10 Mhz
Modulation	SC-OFDM - QPSK
RB offset	25
RB size	1

**B. Permittivity**

Frequency (MHz)	707.590
Relative permittivity (real part)	41.995
Relative permittivity (imaginary part)	22.443
Conductivity (S/m)	0.855

**C. SAR Surface and Volume**

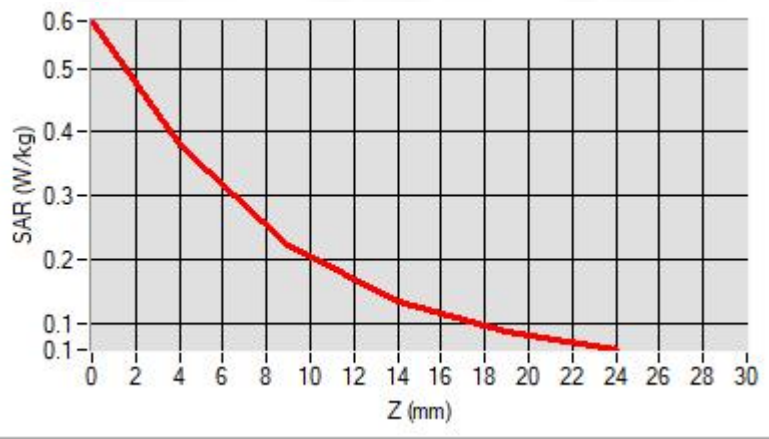


**D. SAR 1g & 10g**

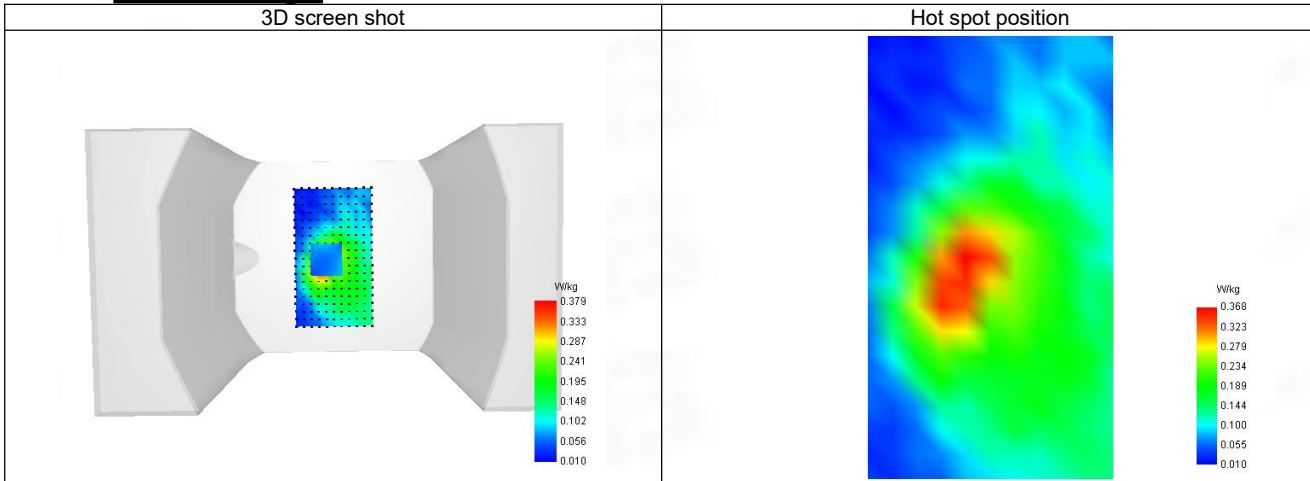
SAR 10g (W/Kg)	0.216
SAR 1g (W/Kg)	0.359
Variation (%)	-0.570
Horizontal validation criteria: minimum distance (mm)	8.000
Vertical validation criteria: SAR ratio M2/M1 (%)	58.84%

**E. Z Axis Scan**

Z (mm)	0.00	4.00	9.00	14.00	19.00
SAR (W/Kg)	0.575	0.379	0.223	0.135	0.088



### F. 3D Image



9-Body with back position in dist. 0mm on Channel 6 in IEEE 802.11b ISM

**SAR Measurement at IEEE 802.11b ISM (Body, Validation Plane)**

Date of measurement: 11/5/2024

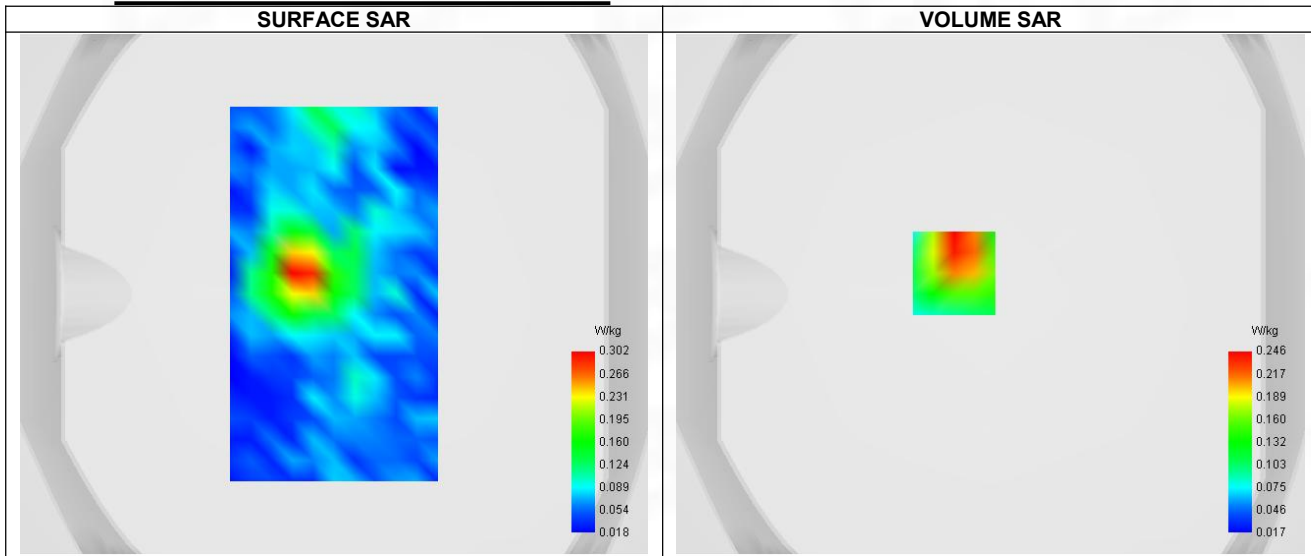
**A. Experimental conditions.**

Probe	SN 04/22 EPGO365
ConvF	2.36
Area Scan	dx=8mm dy=8mm, Adaptive 1 max
Zoom Scan	5x5x7, dx=8mm dy=8mm dz=5mm, Complete
Phantom	Validation plane
Device Position	Body
Band	IEEE 802.11b ISM
Channels	Middle (6)
Signal	IEEE 802.11

**B. Permittivity**

Frequency (MHz)	2437.000
Relative permittivity (real part)	39.099
Relative permittivity (imaginary part)	13.341
Conductivity (S/m)	1.801

**C. SAR Surface and Volume**



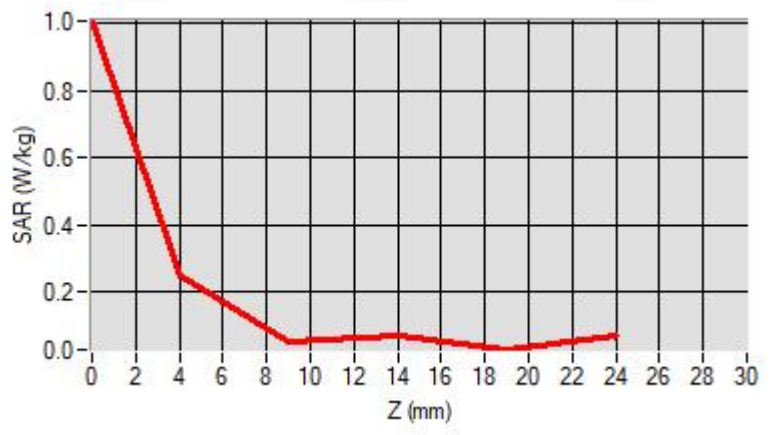
Maximum location: X=-14.00, Y=8.00 ; SAR Peak: 0.44 W/kg

**D. SAR 1g & 10g**

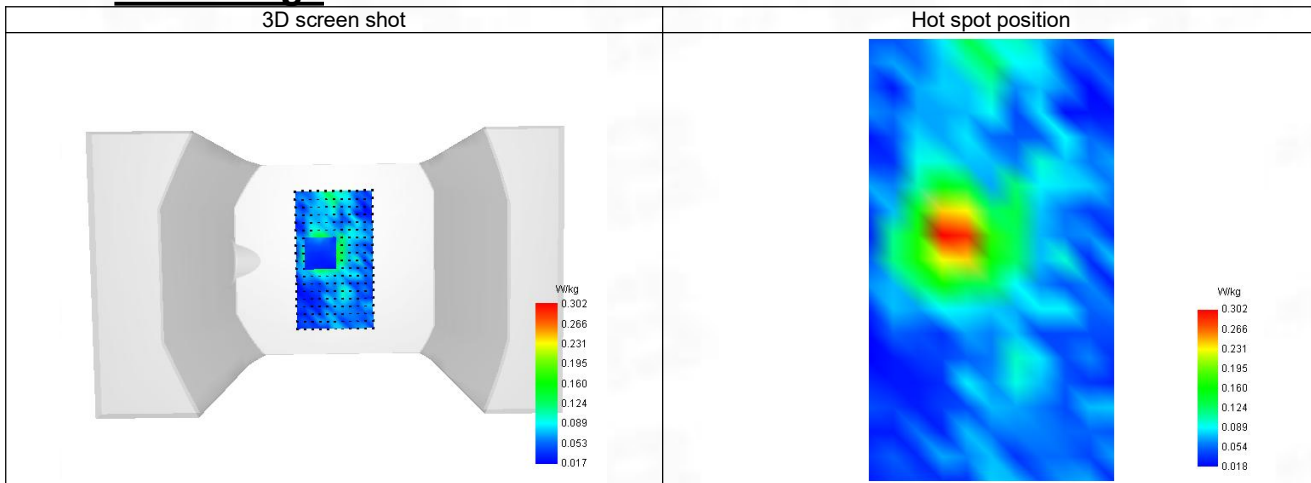
SAR 10g (W/Kg)	0.133
SAR 1g (W/Kg)	0.239
Variation (%)	-1.390
Horizontal validation criteria: minimum distance (mm)	9.175
Vertical validation criteria: SAR ratio M2/M1 (%)	53.66%

**E. Z Axis Scan**

Z (mm)	0.00	4.00	9.00	14.00	19.00
SAR (W/Kg)	1.008	0.246	0.132	0.071	0.027



### F. 3D Image



**10-Body with back position in dist. 0mm on Channel 38 in IEEE 802.11n U-NII**

**SAR Measurement at IEEE 802.11n U-NII (Body, Validation Plane)**

Date of measurement: 13/5/2024

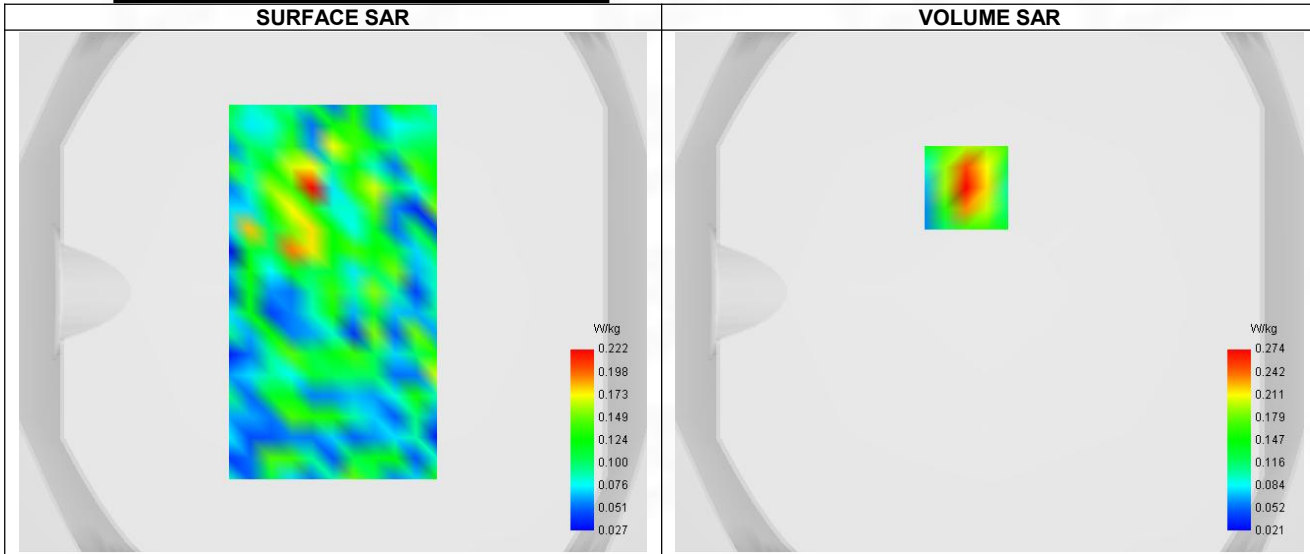
**A. Experimental conditions.**

Probe	SN 04/22 EPGO365
ConvF	2.24
Area Scan	dx=8mm dy=8mm, Adaptive 1 max
Zoom Scan	7x7x12,dx=4mm dy=4mm dz=2mm,Complete
Phantom	Validation plane
Device Position	Body
Band	IEEE 802.11n U-NII
Channels	Lower (38)
Signal	IEEE 802.11

**B. Permittivity**

Frequency (MHz)	5190.000
Relative permittivity (real part)	35.892
Relative permittivity (imaginary part)	16.236
Conductivity (S/m)	4.690

**C. SAR Surface and Volume**

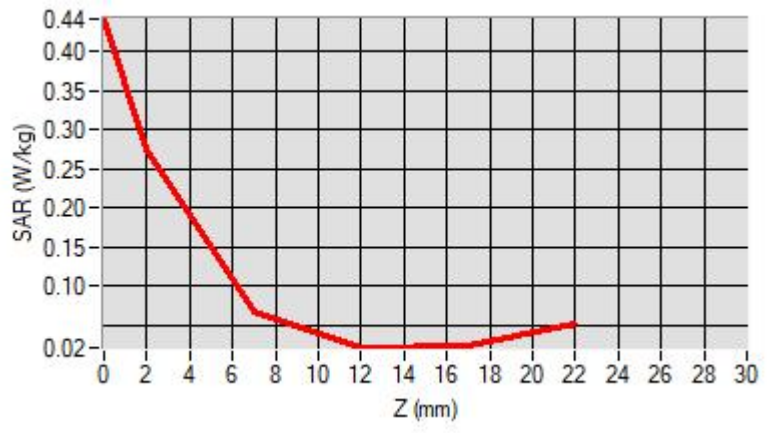


**D. SAR 1g & 10g**

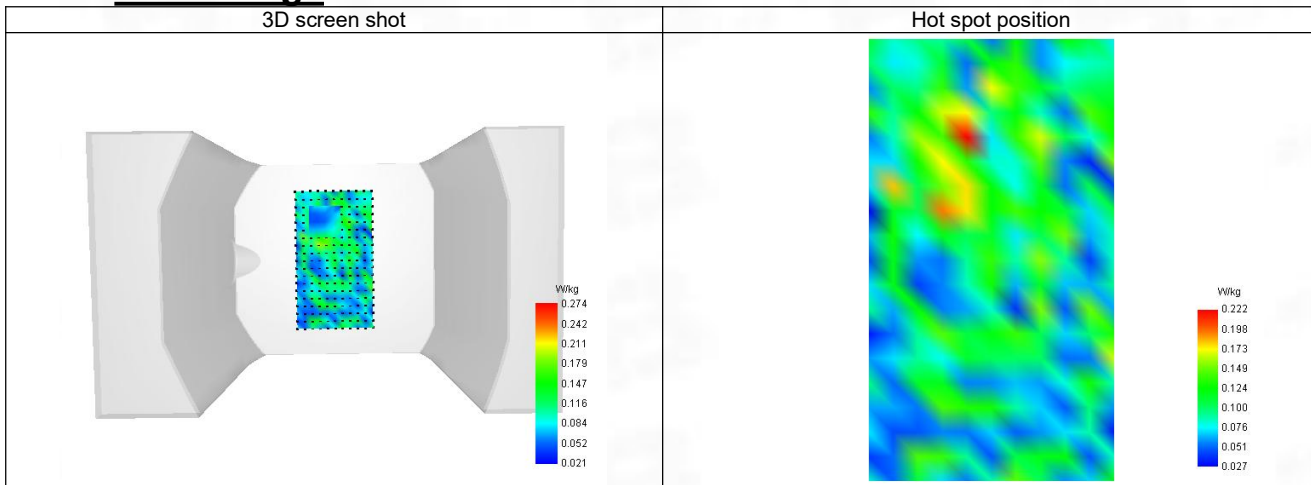
SAR 10g (W/Kg)	0.113
SAR 1g (W/Kg)	0.196
Variation (%)	-2.420
Horizontal validation criteria: minimum distance (mm)	6.958
Vertical validation criteria: SAR ratio M2/M1 (%)	54.01%

**E. Z Axis Scan**

Z (mm)	0.00	2.00	4.00	6.00	8.00	10.00	12.00	14.00	16.00
SAR (W/Kg)	0.441	0.274	0.148	0.098	0.084	0.071	0.051	0.033	0.024



### F. 3D Image



**11-Body with back position in dist. 0mm on Channel 151 in IEEE 802.11ac U-NII**

**SAR Measurement at IEEE 802.11ac U-NII (Body, Validation Plane)**

Date of measurement: 13/5/2024

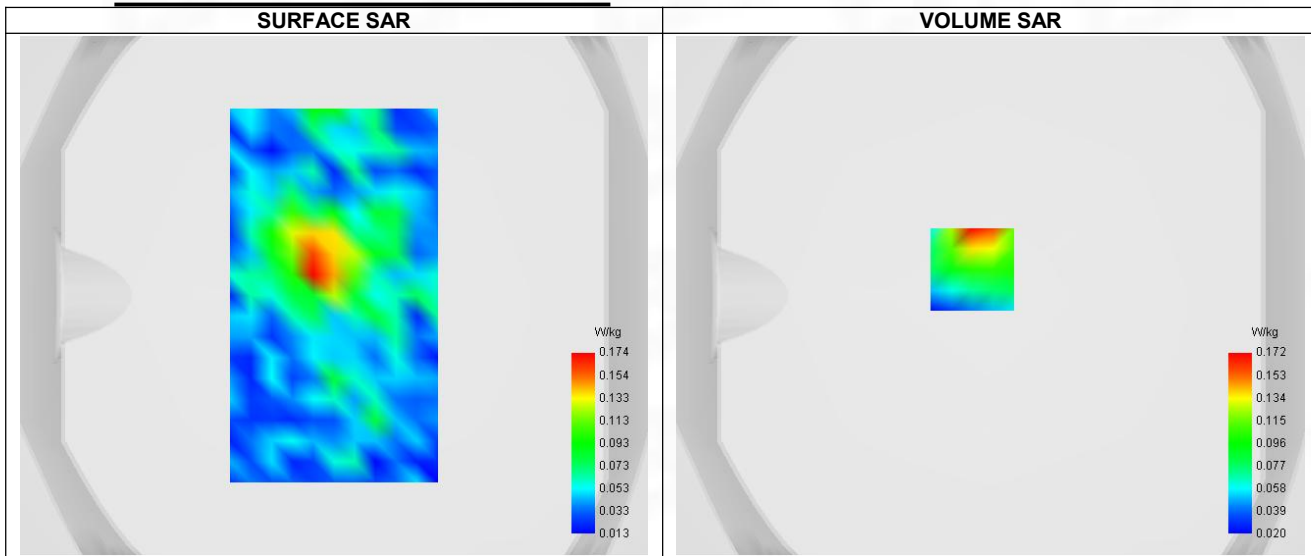
**A. Experimental conditions.**

Probe	SN 04/22 EPGO365
ConvF	2.04
Area Scan	dx=8mm dy=8mm, Adaptive 1 max
Zoom Scan	7x7x12,dx=4mm dy=4mm dz=2mm,Complete
Phantom	Validation plane
Device Position	Body
Band	IEEE 802.11ac U-NII
Channels	Lower (151)
Signal	IEEE 802.11

**B. Permittivity**

Frequency (MHz)	5755.000
Relative permittivity (real part)	35.225
Relative permittivity (imaginary part)	16.467
Conductivity (S/m)	5.265

**C. SAR Surface and Volume**



Maximum location: X=-7.00, Y=10.00 ; SAR Peak: 0.27 W/kg

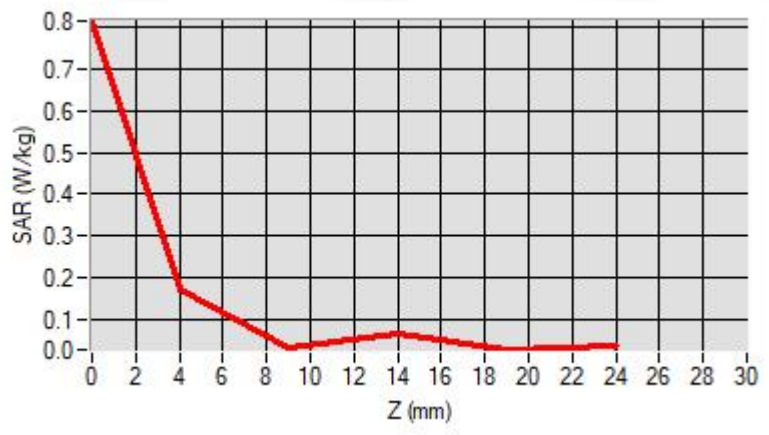
**D. SAR 1g & 10g**

SAR 10g (W/Kg)	0.087
SAR 1g (W/Kg)	0.172
Variation (%)	-3.690
Horizontal validation criteria: minimum distance (mm)	7.256
Vertical validation criteria: SAR ratio M2/M1 (%)	65.12%

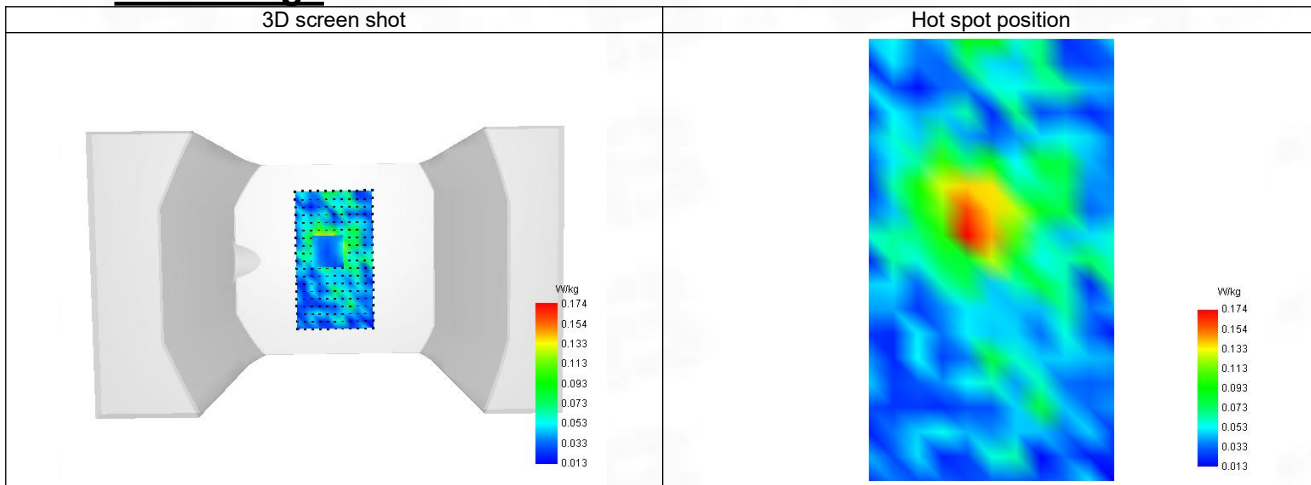
**E. Z Axis Scan**

Z (mm)	0.00	2.00	4.00	6.00	8.00	10.00	12.00	14.00	19.00
SAR (W/Kg)	0.815	0.172	0.112	0.097	0.082	0.071	0.062	0.055	0.028



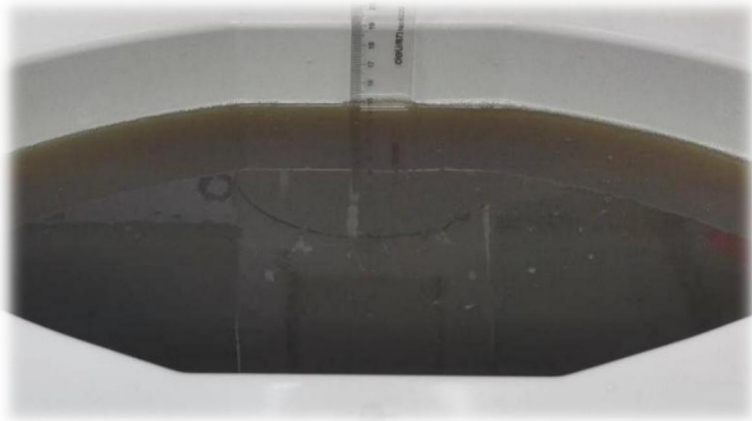


### F. 3D Image

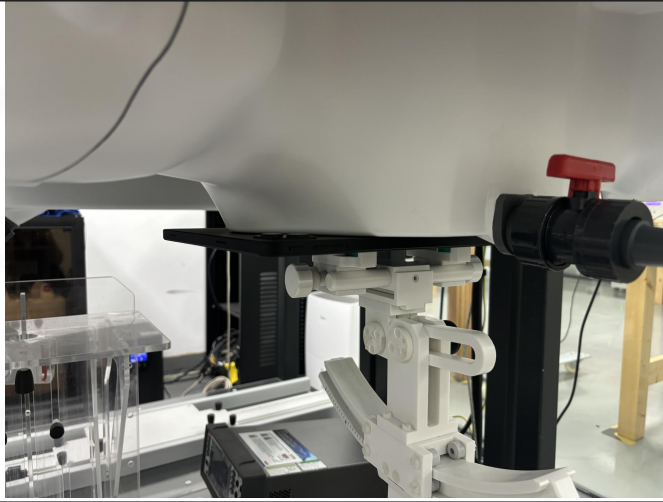


## ANNEX D SAR Test Setup Photos

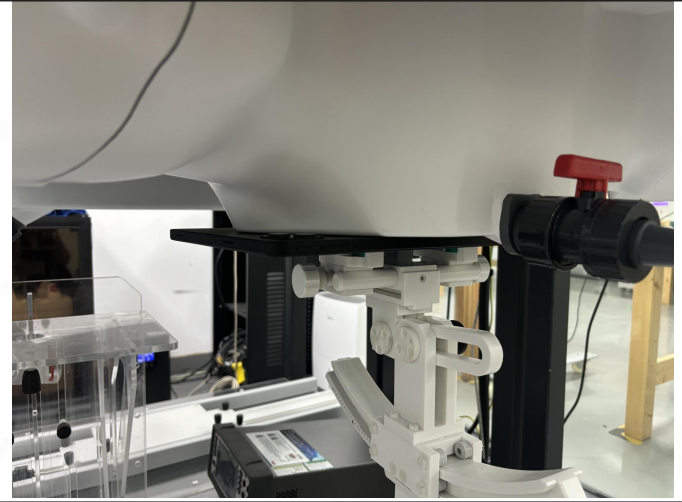
Reference Photo: simulation liquid depth 15cm



Reference Photos



Back (dist. 0mm)



Top (dist. 0mm)

## ANNEX E EUT External and Internal Photos

Please refer to RF Report.

## ANNEX F Calibration Information

Please refer to the document "Calibration.pdf".



BTF Testing Lab (Shenzhen) Co., Ltd.

F101, 201 and 301, Building 1, Block 2, Tantou Industrial Park, Tantou Community, Songgang Street,  
Bao'an District, Shenzhen, China

[www.btf-lab.com](http://www.btf-lab.com)

**--END OF REPORT--**