

© 2004 KTL Systems, Inc.  
High Density Systems, Inc. 1171 E7

REVISION 4 1/14/04  
P887-68228  
01-02

POLYTECH INCORPORATED

60 170 180 190 200 210 220 230 240 250 260 270

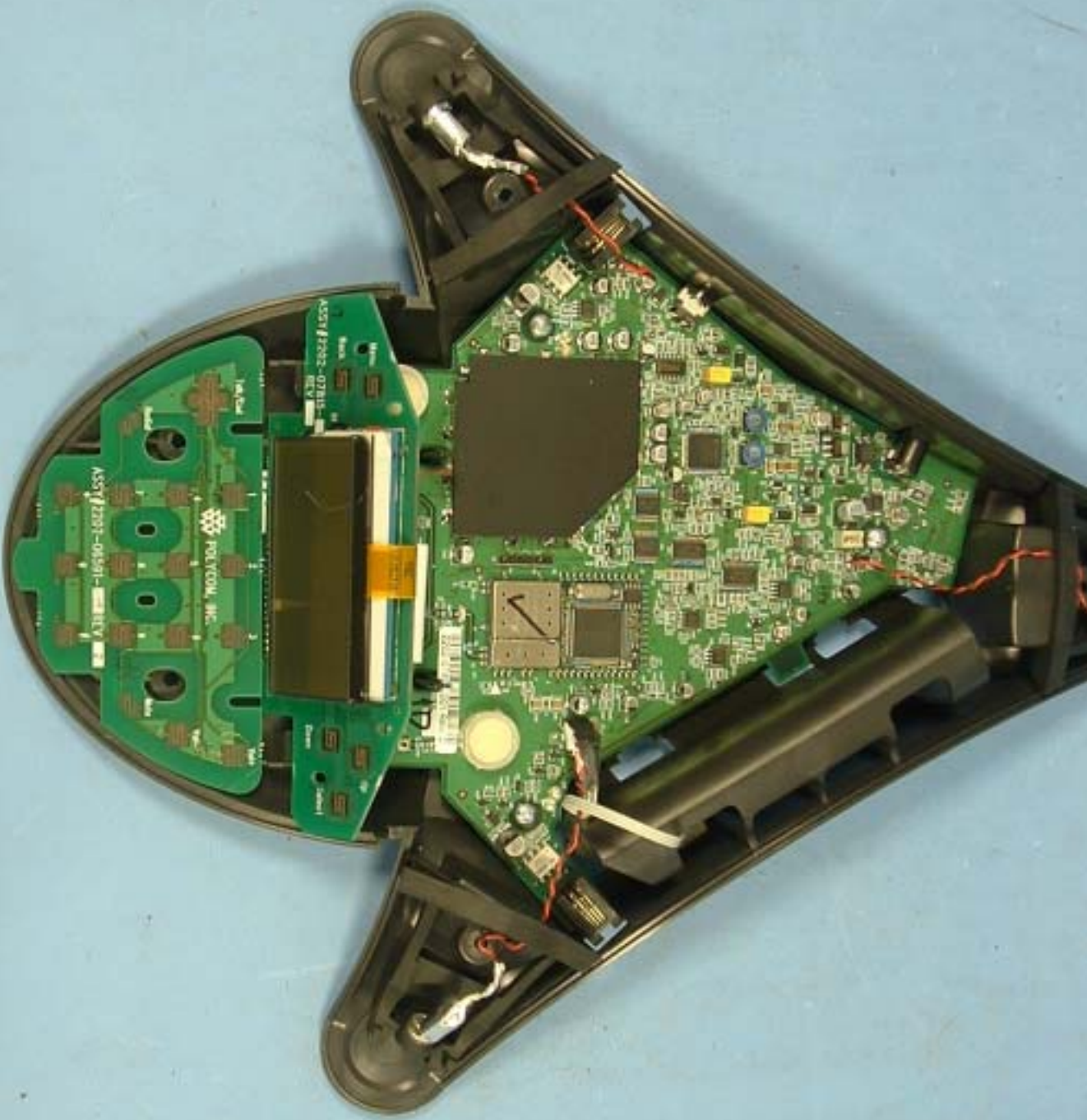
330 340 350 360 370 380 390 400 410 420

TEST SAMPLE

No: 3H7281

DATE: 13.02.04

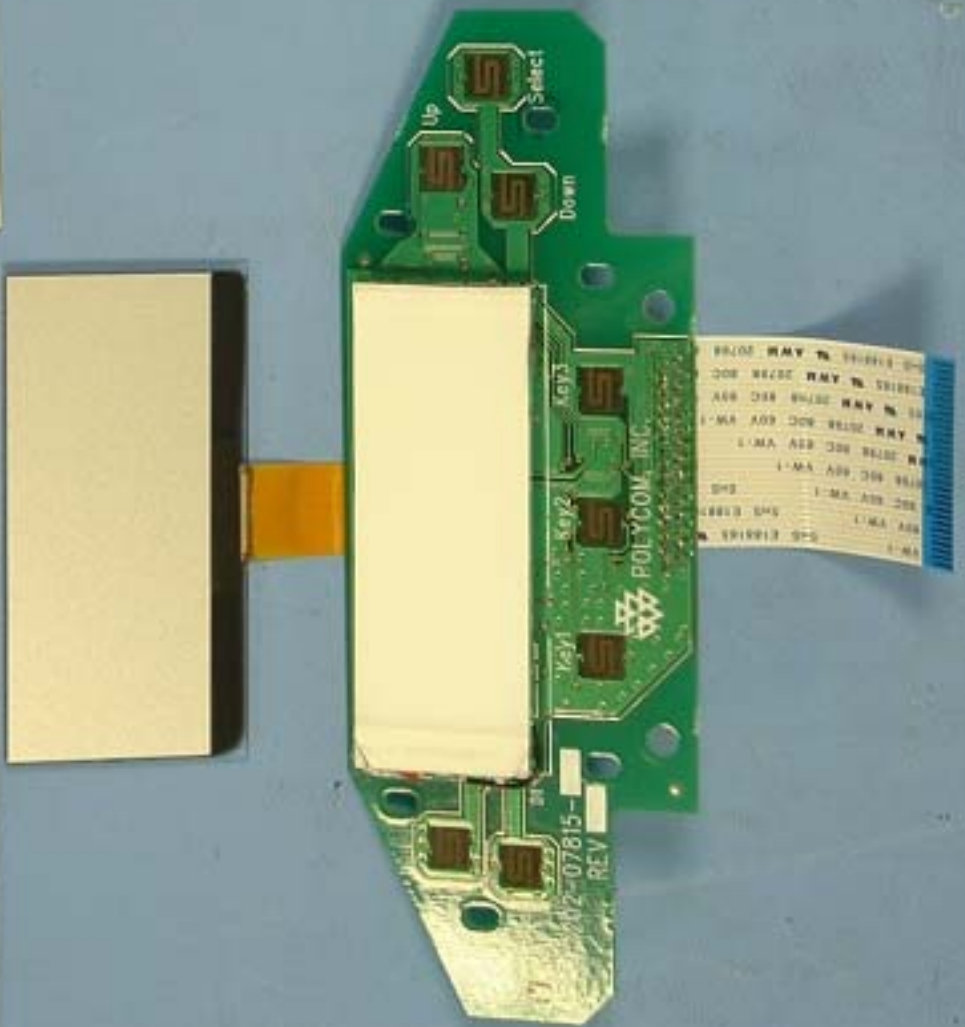
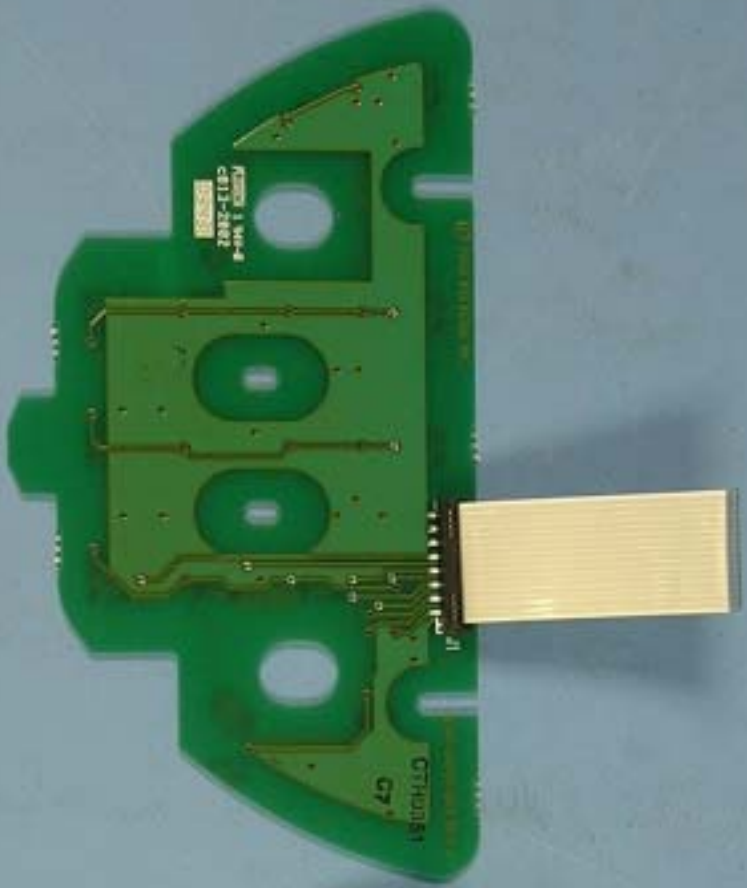





100 110 120 130 140 150 160 170 180 190 200 210 220 230 240 250 300 350 400 450 500 550

  
TEST SAMPLE  
ID: SH7281  
DATE: 13-02-04





  
TEST SAMPLE  
No. 3H7281  
DATE: 13.02.04

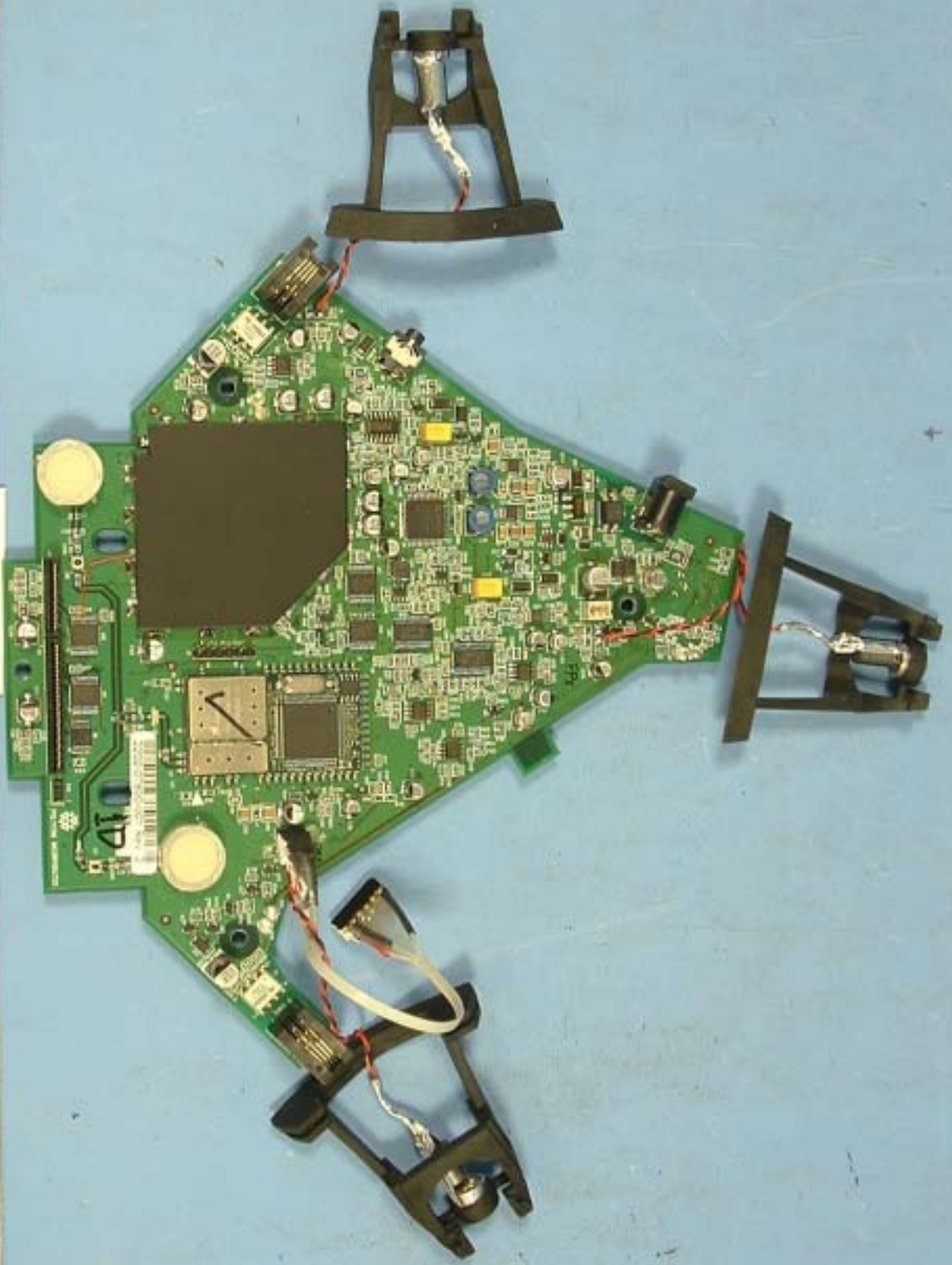
150 160 170 180 190 200 210 220 230 240 250 260

330 340 350 360 370 380 390 400 410 420 430 440

150 160 170 180 190 200 210 220 230 240 250 260 270 280

350 360 370 380 390 400 410 420 430 440 450 460 470 480 490 500 510

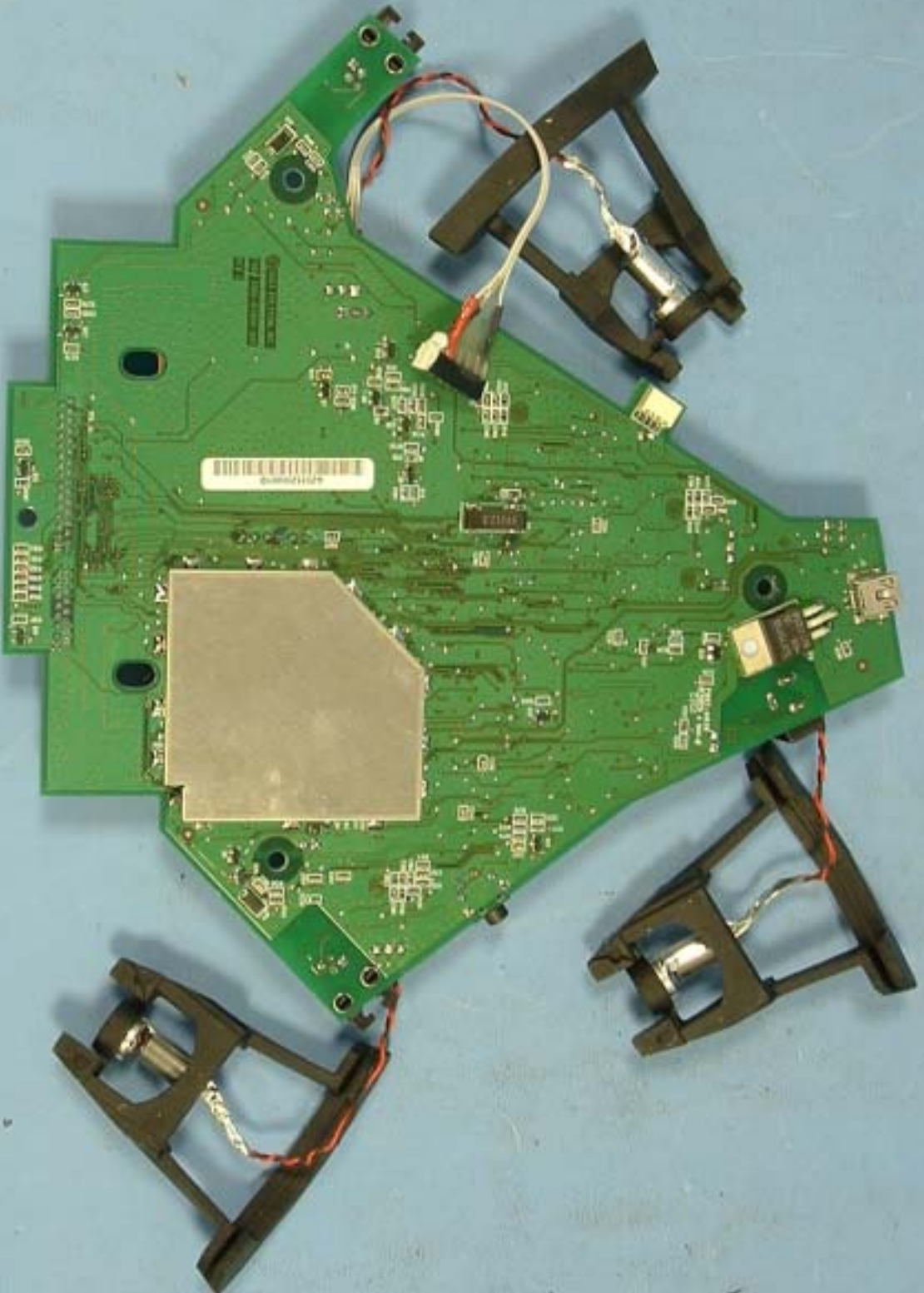
  
TEST SAMPLE  
NO. SH7281  
DATE 13-02-04



60 70 80 90 100 110 120 130 140 150 160 170 180 190 200 210 220 230 240 250 260 270 280 290

350 360 370 380 390 400 410 420 430 440 450 460 470 480 490 500 510 520 530 540 550 560 570 580 590 600

  
TEST SAMPLE  
No. 3H7281  
DATE 13.02.04



60 170 180 190 200 210 220 230 240 250 260 270

330 340 350 360 370 380 390 400 410 420



  
TEST SAMPLE  
No. 3H7281  
DATE 13.02.04