

imonitor™ mini



WARNING

Failure to follow these warnings and the assembly instructions could result in serious injury or death.

This device is designed only to monitor the sounds of your child. It will not alert you to your child's silent activities. When using the monitor, you must still provide the supervision necessary for the continued safety of your child. This product is not designed or intended for use as a medical monitor. Always be sure that both the transmitter and receiver are working properly and are within range of each other.

WARNING

- **STRANGULATION HAZARD.** Keep the AC adapter cords out of the reach of children. Do not use with extension cords.
- **DO NOT** place the Nursery Units or their cords within your child's reach. Do not put the Nursery Units inside a crib or play yard.
- Use **ONLY** with 110-120 volt AC electrical outlets.
- Protect the AC adapter cords. Place them so they are not walked on or pinched by furniture or other items.
- Allow for proper ventilation when units are in use. Do not cover the Nursery Units or Parent Units with any object

such as a blanket. Do not place them in a drawer or in any location which would muffle the sound or interfere with the normal flow of air.

- **DO NOT** immerse any part of the Nursery Units, Parent Units, or Docking Stations in water. Clean only with a dry cloth.
- **DO NOT** place the Nursery Units near water and moisture. Do not use the Nursery Units outdoors. Do not use the Nursery Units near possible wet areas, such as a bathtub, shower, wash basin, sink, laundry tub, swimming pool, wet basement, etc.

WARNING

- Keep Nursery Units away from heat sources, such as fireplaces, radiators, stoves, and TVs or other appliances. Heat can damage the case or electrical parts.
- DO NOT use the Nursery Units if:
 - The AC adapter cords or plugs have been damaged.
 - The units have been exposed to liquids.
 - The units have been dropped or are damaged.
- DO NOT OPEN THE NURSERY UNITS, PARENT UNITS, DOCKING STATIONS OR ADAPTERS. No user-serviceable parts inside. Risk of electrical shock, fire or death.
- The antenna used for this transmitter must be installed to provide a separation distance of at least 20 cm (7.9") from all persons and must not be co-located or operating in conjunction with any other antenna or transmitter.

FC **FCC STATEMENT**

▲WARNING Modifications not authorized by the manufacturer may void users authority to operate this device.

NOTE: This equipment has been tested and found to comply with the limits for a Class B digital device, pursuant to Part 15 of the FCC Rules. These limits are designed to provide reasonable protection against harmful interference in a residential installation. This equipment generates, uses and can radiate radio frequency energy and, if not installed and used in accordance with the instructions, may cause harmful

interference to radio communications.

However, there is no guarantee that interference will not occur in a particular installation. If this equipment does cause harmful interference to radio or television reception, which can be determined by turning the equipment off and on, the user is encouraged to try to correct the interference by one or more of the following measures:

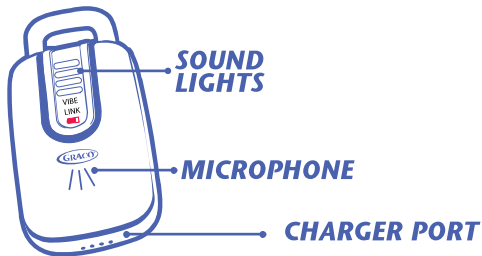
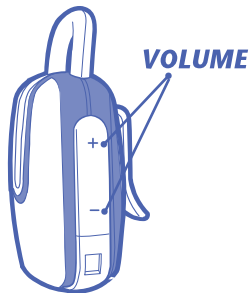
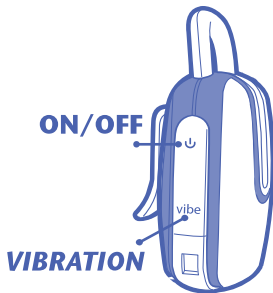
- Reorient or relocate the receiving antenna.
- Increase the separation between the equipment and receiver.

- Connect the equipment into an outlet on a circuit different from that to which the receiver is connected.
- Consult the dealer or an experienced radio/TV technician for help.

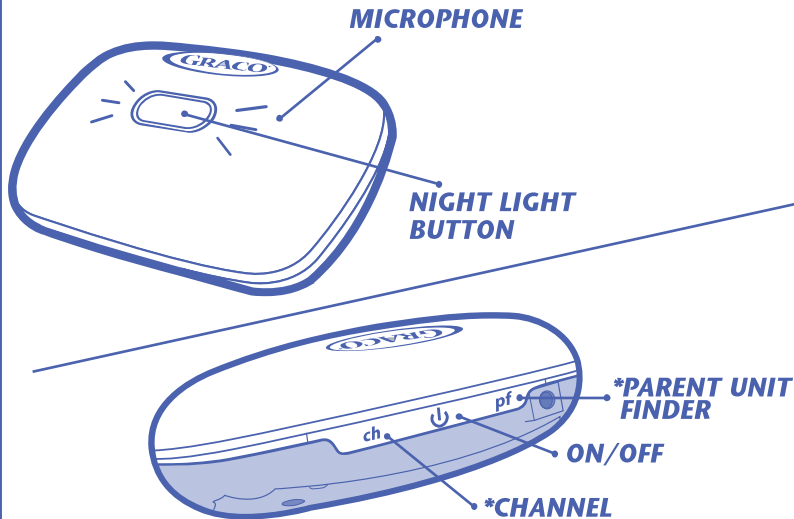
This device complies with part 15 of the FCC Rules. Operation is subject to the following two conditions: (1) This device may not cause harmful interference, and (2) this device must accept any interference received, including interference that may cause undesired

Graco Children's Products
150 Oaklands Blvd.
Exton, PA 19341
1-800-345-4109

Parent Unit Overview

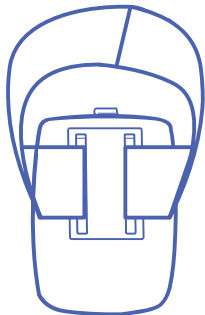


Parent Unit Overview

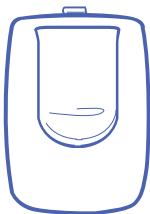


Battery Door Options

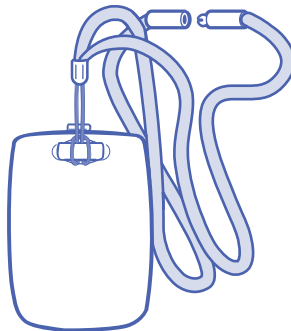
1



ARM



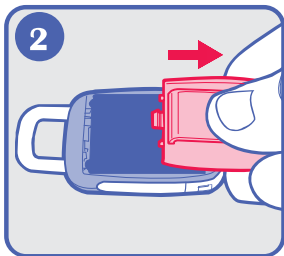
BELT



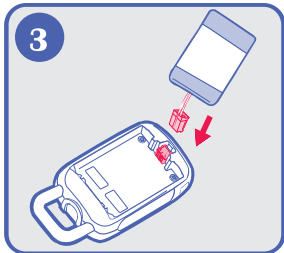
NECK

Select one of 3 battery doors according to your preference in carrying the parent unit. You can carry the parent unit around your arm, belt, or neck. All 3 choices can be used on the parent unit.

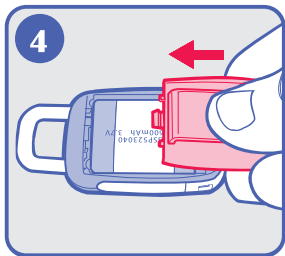
Installing Battery



Remove battery door



Plug battery in.



Re-attach battery door



Battery installation is complete.

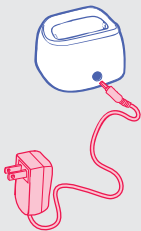
Parent Unit Charger

6

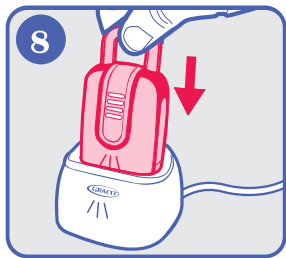


The front of the unit has the Graco logo.

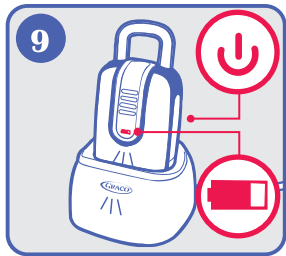
7




Connect AC adapter to the back of the parent unit charger.



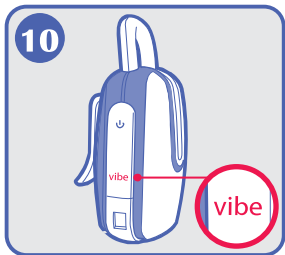
Place parent unit in the charger to charge battery.



Charge battery for 4 hours. Parent unit will function while docked in charger. Battery light  will show when charging.

When fully charged, press the power button to activate.

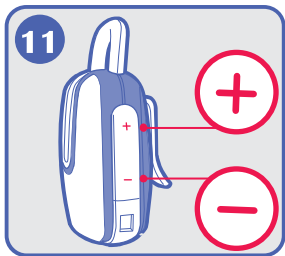
Activating Vibration



Press button briefly to activate vibration feature. To turn off vibration, press button again.

Press and hold vibe button, then use + or - on opposite side to adjust threshold.

Volume



Press buttons to change the volume level.

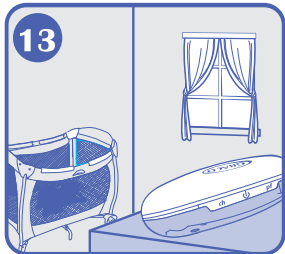
Nursery Unit

12



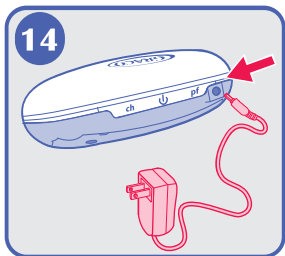
The front of the unit has the Graco logo.

13



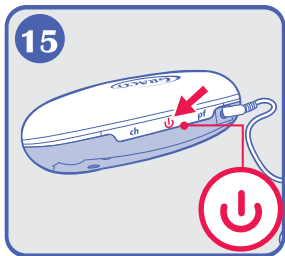
Place unit in the room with the baby. NEVER place the nursery unit within the baby's reach.

14



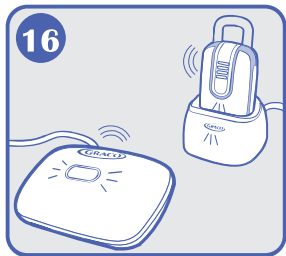
Connect AC adapter to nursery unit and plug into wall.

15



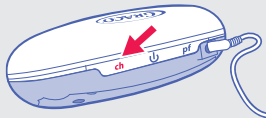
Press the ON/OFF button to activate.

Parent/nursery units will locate each other.



Changing Channels

17

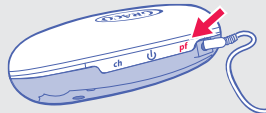


If you experience some interference, press the “Ch” button to change channels. The parent unit will automatically scan all available channels and lock on to the nursery unit.

Press the “Ch” button until a working channel is found.

Parent Finder

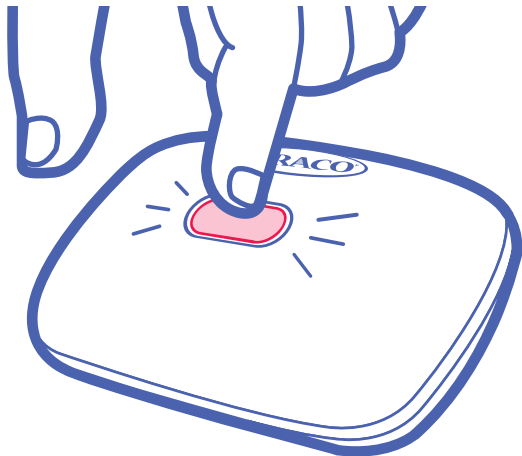
18



Press button to locate parent unit when it is misplaced or hidden.

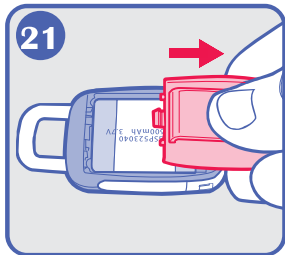
Night Light

19

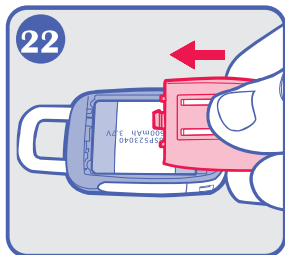


To turn night light ON/OFF, press button as shown

Remove battery door



Replace battery door with one of the 2 other door selections.



———— Troubleshooting ————

DO NOT ATTEMPT to modify the unit. Any modifications to the transmitter and/or receiver can void the operator's authority to operate the equipment.

Most problems have a simple solution. First, check that:

- Power is turned ON for both units
- Both units are plugged in (or batteries are fresh and fully charged).
- Electrical outlet works
- Volume is turned up on Parent Unit
- Parent Unit is in range of the Nursery Unit

No Sound

- Battery dead or weak — replace or use parent unit charger.
- AC adapter not properly connected — check the connections.
- Nursery Unit covered or blocked — remove the obstruction.

Weak Sound

- Nursery Unit too far from baby — move closer.
- Large objects blocking the signal — try repositioning Nursery Unit.
- Volume setting too low — turn it up.

Static

- Interference from other electrical equipment — eliminate cause of static (TVs, mixers, computers, fans, fluorescent lights, light dimmers, etc.)
- Parent Unit too far from Nursery Unit — move them closer.
- Significant amount of obstructions between Parent Unit and Nursery Unit such as walls, ceilings & buildings.
Try moving the Nursery Unit to another part of the room.
- Change channel on Nursery Unit.

Shrill Sound (Feedback)

- Nursery Unit and Parent Unit too close together — move them farther apart.
- Volume set too high — lower the volume.

Replacement Parts Warranty Information (USA)

To purchase parts or accessories or for warranty information in the United States, please contact us at the following:

**www.gracobaby.com
OR
1-800-345-4109**

Product Registration (USA)

To register your Graco product from within the U.S.A. visit us online at www.gracobaby.com/productregistration. We currently do not accept product registrations from those living outside the United States of America.