

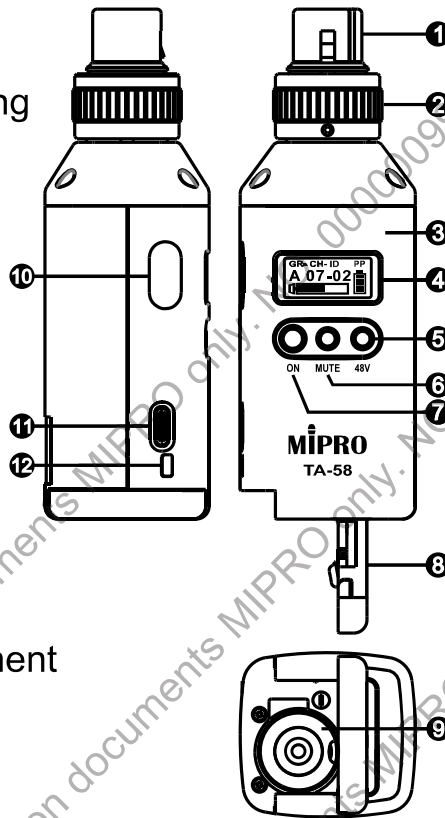
MIPRO®

TA-58 5.8 GHz Digital Wireless Plug-on Transmitter User Guide



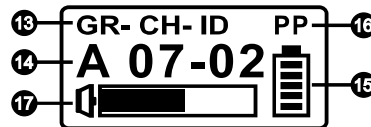
I. Part Names

- ① XLR Socket
- ② Mechanical Locking Ring
- ③ Housing
- ④ LCD Screen
- ⑤ Phantom Power Button
- ⑥ Mute Button
- ⑦ Power Button
- ⑧ Battery Cover
- ⑨ Battery Compartment
- ⑩ ACT Sync Port
- ⑪ USB Type-C Charging Port
- ⑫ Charging Status Indicator



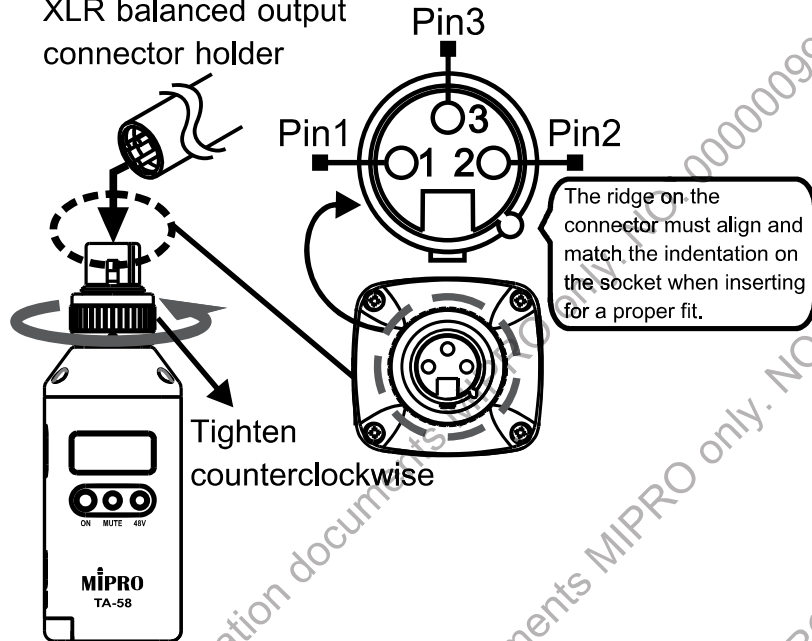
II. LCD Screen

- ⑬ Settings
- ⑭ Parameters
- ⑮ Battery Meter
- ⑯ Phantom Power Status
- ⑰ AF Meter



III. Audio Input

Wired microphone
XLR balanced output
connector holder



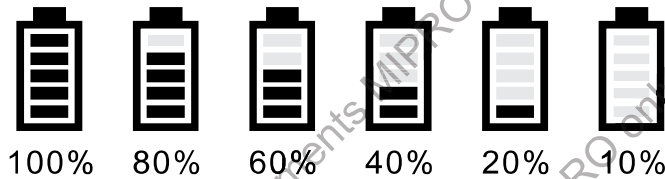
1. Ascertain a wired microphone is plugged into the socket ❶ before powering on the transmitter to prevent noise interference.
2. Tighten the mechanical locking ring ❷ in a clockwise direction for a secured fit.
3. Unplug the microphone in a counterclockwise direction.
4. XLR balanced microphone connection pin name and function.
 - A. Pin 1: Ground Pin (Negative phantom power)
 - B. Pin 2: HOT AF+ Positive phase input pin (String 6.8K Ω resistance to positive phantom power)
 - C. Pin 3: COOL AF- Negative phase input pin (String 6.8K Ω resistance to positive phantom power)

IV. Operating Instructions

1. Power On/Off:

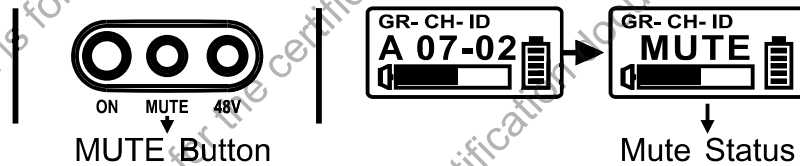
- A. Press the power button to power on and the LCD screen glows.
- B. Press and hold the power button for 2 seconds to power off, meanwhile, the LCD shows "OFF...".

2. Battery Status:



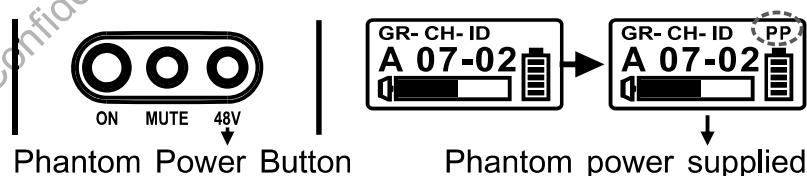
When the battery has less than 10% power remaining, it must be replaced. If an under-voltage condition continues, the LCD will show "OFF..." and the system will shut down.

3. MUTE Button:



- A. Press the MUTE button to access mute status, and the LCD shows "MUTE". Press the MUTE button again to unmute, and the LCD returns to the main screen.
- B. The mute status will be canceled automatically when the power is off.

4. 48V Phantom Power Button:



- A. Press Phantom Power Button to activate +48V phantom power, and the LCD shows PP at the right top corner. Press the button again to cancel.

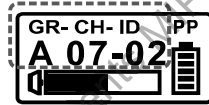
3


All rights reserved. Do not copy or forward without prior approvals MIPRO.
Specifications and design subject to change without notice. YM 021/05

5.8 GHz Digital Wireless Plug-on Transmitter

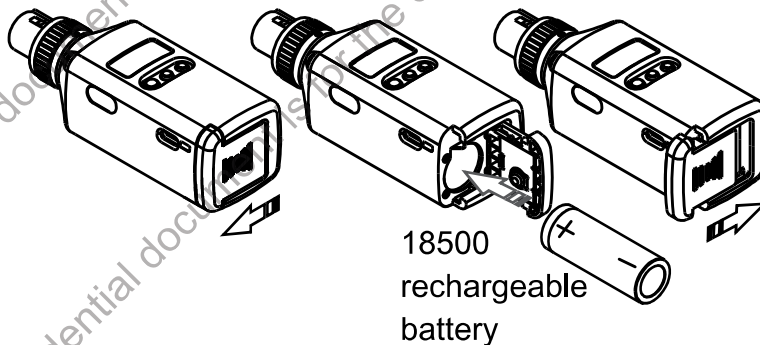
- B. Phantom power is required for installing a condenser microphone. Dynamic microphone doesn't need phantom power.
- C. The maximum power supply is 10mA. However, observe the total power consumption will increase significantly and the battery life will therefore be reduced by 50% or more.

5. GR(GROUP) – CH(CHANNEL) – ID(ID Code)



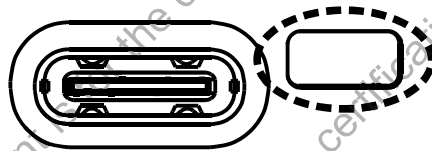
- A. Only shows the information. It is not allowed to be changed.
- B. Changing the current group, channel, and ID code must be done on the receiver, and then synced by pressing the "ACT" button on the receiver.
- C. Group: A, B1, B2, CH: 1~12, ID: 1~64 and .

V. Insertion and Replacement of the Batteries



1. How to insert the battery:
 - A. Open the battery cover.
 - B. Insert one 18500 rechargeable battery as shown above with positive (+) end towards inside compartment.
 - C. Push the battery cover back for a secured lock.

2. If the LCD screen doesn't glow after powered on, check if the battery is inserted polarity correctly or is fully drained.
3. Power off the transmitter to avoid additional battery use. Remove the battery if it will not be used for an extended period.
4. Charge this device by USB Type-C. Only an ICR-18500 lithium battery is allowed to be used. Cautions for charging are as follows:
 - A. Ascertain the battery type before charging.
 - B. If the charging indicator doesn't glow, check the 18500 lithium battery is inserted polarity correctly.
 - C. This charging port doesn't supply power for the transmitter.
 - D. DO NOT remove the battery during charging. DO remove the charging cable before removing the battery.
 - E. Charging Status Indicator: Orange – charging; Green – full charged.



VI. Notes

1. Refer to the actual product in the event of product description discrepancy.
2. Frequency range, RF output power, and maximum deviation comply with the regulations of different countries.

5.8 GHz Digital Wireless Plug-on Transmitter

Federal Communication Commission Interference Statement

This equipment has been tested and found to comply with the limits for a Class B digital device, pursuant to Part 15 of the FCC Rules. These limits are designed to provide reasonable protection against harmful interference in a residential installation.

This equipment generates, uses and can radiate radio frequency energy and, if not installed and used in accordance with the instructions, may cause harmful interference to radio communications. However, there is no guarantee that interference will not occur in a particular installation. If this equipment does cause harmful interference to radio or television reception, which can be determined by turning the equipment off and on, the user is encouraged to try to correct the interference by one of the following measures:

- . Reorient or relocate the receiving antenna.
- . Increase the separation between the equipment and receiver.
- . Connect the equipment into an outlet on a circuit different from that to which the receiver is connected.
- . Consult the dealer or an experienced radio/TV technician for help.

FCC Caution: To assure continued compliance, any changes or modifications not expressly approved by the party responsible for compliance could void the user's authority to operate this equipment. (Example - use only shielded interface cables when connecting to computer or peripheral devices).

FCC Radiation Exposure Statement

This equipment complies with FCC RF radiation exposure limits set forth for an uncontrolled environment. This equipment should be installed and operated with a minimum distance of 20 centimeters between the radiator and your body.

This transmitter must not be co-located or operating in conjunction with any other antenna or transmitter.

The antennas used for this transmitter must be installed to provide a separation distance of at least 20 cm from all persons and must not be co-located or operating in conjunction with any other antenna or transmitter.

This device complies with Part 15 of the FCC Rules.

Operation is subject to the following two conditions:

- (1) This device may not cause harmful interference, and
- (2) This device must accept any interference received, including interference that may cause undesired operation.

Disposal Dispose of any unusable devices or batteries responsibly and in accordance with any applicable regulations.



2005-06-13

Disposing of used batteries with domestic waste is to be avoided!

Batteries / NiCad cells often contain heavy metals such as cadmium(Cd), mercury(Hg) and lead(Pb) that makes them unsuitable for disposal with domestic waste. You may return spent batteries/accumulators free of charge to recycling centres or anywhere else batteries/ accumulators are sold.

By doing so, you contribute to the conservation of our environment!

This Confidential document is for the certification documents MIPRO only. NO. 0000000991

This Confidential document is for the certification documents MIPRO only. NO. 0000000991

This Confidential document is for the certification documents MIPRO only. NO. 0000000991

MIPRO[®]
MICROPHONE PROFESSIONALS



MIPRO Electronics Co., Ltd

Headquarters: No. 814, Beigang Rd., Chiayi City 600079, Taiwan
Tel : +886.5.238.0809 Fax : +886.5.238.0803
www.mipro.com.tw mipro@mipro.com.tw



2 CE670A

All rights reserved. Do not copy or forward without prior approvals MIPRO. Specifications and design subject to change without notice. YM 021/05