

# MIPRO

## ACT-5H Wireless Microphone

### Instruction Manual



**MIPRO** Electronics Co., Ltd.

Head office: 814, Pei-Kang Road, Chiayi, 60096, Taiwan.

Taipei office: 5, Lane 118, Sung-teh Road, 11075, Taipei, Taiwan.

Web-http: //www.mipro.com.tw

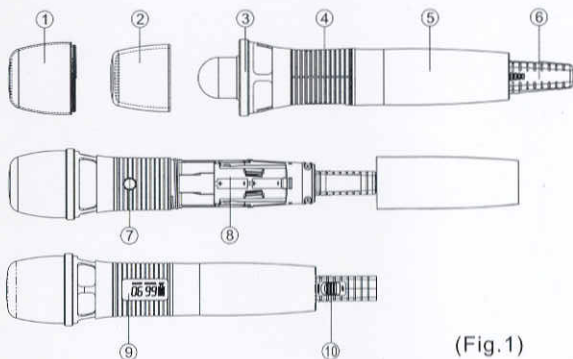
E-mail: mipro@mipro.com.tw



FC CE

Finely crafted and ergonomically designed ACT-5H robust and durable plastic housing, LCD panel, and high-efficient transmitting circuit design with low spurious showcases MIPRO's professional style.

### 1. PARTS NAME AND FUNCTIONS

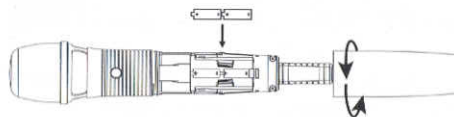


(Fig.1)

1. Top Grille : Designed to protect microphone capsule.
2. Internal Foam Screen of Upper Grille: It is inclosed inside the protective pouch of microphones for advancing to eliminate "pop" noise in special occasion.
3. Internal Foam Screen of Lower Grille And Capsule Module : Internal foam screen of lower grille is designed to protect capsule module which transfer voice into audio frequency.
4. Upper Housing: Designed to connect to grille, capsule module and accommodate emission PCB and battery compartment
5. Lower Housing: Designed to protect battery compartment and batteries.

6. Color Rear Housing : Protecting On-off switch structure and preventing users free from switching power off accidentally.
7. ACT Signal Receptor: Receiving ACT signal and adjusting frequency automatically.
8. Battery Compartment: Designed to accommodate two 1.5V(AA) batteries.
9. LCD Panel: Display group · channel · error code and battery meter status.
10. Power Switch: Sliding the switch for power "ON" or "OFF".

### 2. BATTERY INSTALLATIONS



(Fig.2)

1. Unscrew housing (5) in counter-clockwise direction.
2. Insert two 1.5V(AA) batteries correctly into the battery compartment (8) with the positive pole (+) points at the microphone capsule. Then, screw the housing (5) back to microphone as shown in fig. 2.

PS: When the microphone is not in use: Make sure the power of the microphone is off. If the microphone will not be used for some time, please remove the batteries from the battery compartment to avoid battery leakage and result in damaged battery springs and circuit. If a rechargeable battery was used, take it out and recharge it.

## FURNISHED ACCESSORIES:

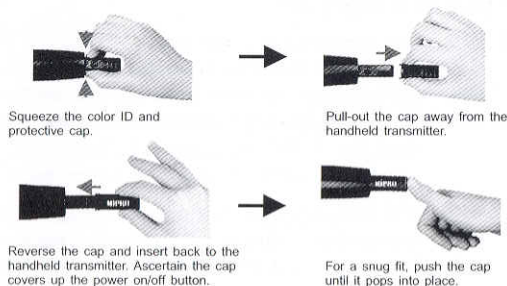
- ① AA TYPE BATTERY × 2
- ② CARRYING STORAGE BAG × 1
- ③ INTERNAL FOAM SCREEN OF UPPER GRILLE X 1
- ④ INSTRUCTION MANUAL × 1

## FEATURES:

- ACTD Robust and durable plastic housing.
- ACTD Patented rear housing design protects accidental power on/off and built-in antenna from breakage.
- ACTD Bright LCD display shows group, channel, battery status and error code.
- ACTD Ten different color rear caps to visually identify a particular microphone channel on stage.
- ACTD World's first ACT function uploads the selected receiver frequency into the transmitter automatically and rapidly.
- ACTD Interchangeable condenser or dynamic microphone capsule. Upper grille allows quick removal for cleaning and replacement.
- ACTD Hyper-cardioid directional condenser capsule exhibits high fidelity, dynamic range, fast transient responses, low feedback characteristics.
- ACTD High SPL inputs avoid distortion.
- ACTD High efficiency circuitry and sophisticated PCB design with extended battery hours.

## 3. Proprietary Design to Avoid Accidental Powering On/Off

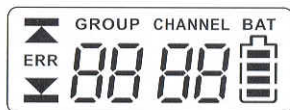
1. When the opening of color rear cap is put on the same position as power switch, the switch can be freely slid.
2. To avoid users accidentally slide the power switch in live stages or sound-controlled sessions, remove color rear cap by pressing both sides of the cap and turn the opening of the cap 180 degrees to cover the power switch as shown in figure below so the power switch can't be freely slid.
3. In case of multi-microphone operation, additional caps can be purchased from your local dealer for better channel differentiation.



(Fig.3)

Caution: ascertain the color ID cap is worn during microphone operation.

## 4. FUNCTIONS OF LCD DISPLAY



1. ERR Message: When "ERR" appears, it means "Operation Error". Please refer to the following codes to diagnose which error you are experiencing.

ERR no01→EEPROM is not being programmed or internal data error.

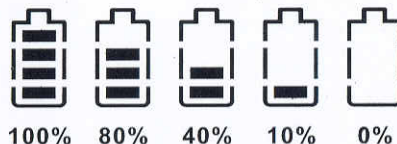
ERR no02→For testing only.

ERR no03→The frequency you are about to program into the system exceeds microphone's upper limit. (At this time, microphone is still operatable and the frequency remains unchanged. To clear the "ERR" message in LCD display, simply turn off the power and switch back on.)

ERR no04→The frequency you are about to program into the system is below microphone's frequency lower limit. (At this time, microphone is still operatable and the frequency remains unchanged. To clear the "ERR" message in LCD display, simply turn off the power and switch back on.)

2. "Group" & "Channel" : When both items are shown, they indicate that the user is currently using the pre-programmed frequency in the receiver.
3. "Channel" Only : If "Channel" is the only item shown in the display, it indicates the user is using the personalized frequency. (Such frequency can only be programmed via MIPRO's ACT Software and available on ACT-707MC only.)

## 4. Battery Status:



Battery Status: When the battery has less than 10% power remaining, batteries must be replaced. If undervoltage continues, LCD will show "PoFF" and shut down the system to avoid battery being over-discharged.

## 5. Switch Off:

When switch the power knob to "Off" position, LCD will show "PoFF" first. Then, the system is completely shut down and no further message will be displayed.

THIS DEVICE COMPLIES WITH PART 74 OF THE FCC RULES AND RSS-123 Issue1 OF CANADA.

OPERATION IS SUBJECT TO THE FOLLOWING TWO CONDITIONS: (1) This device may not cause interference. (2) This device must accept any interference, including interference that may cause undesired operation of the device. This equipment complies with FCC RF radiation exposure limits set forth for an uncontrolled environment.