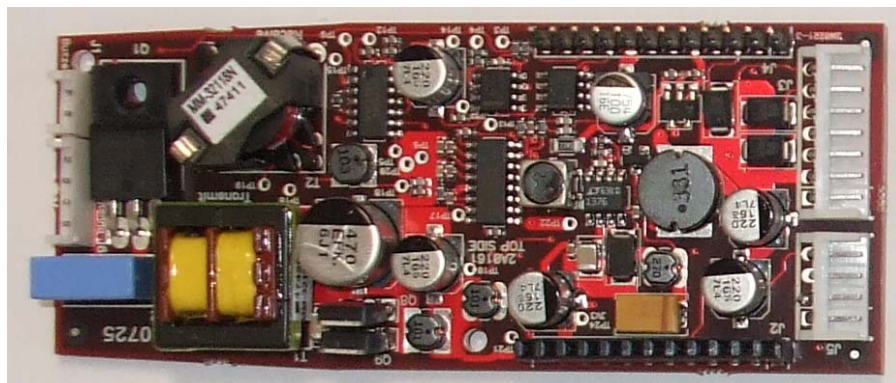
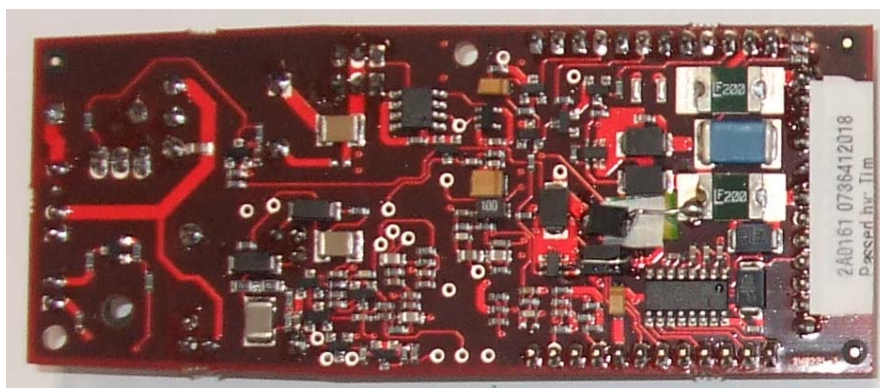


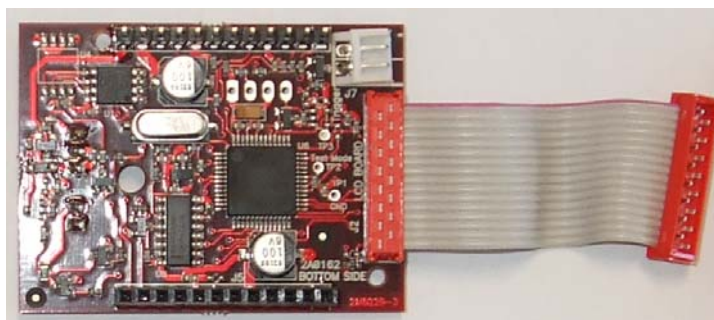
**Main PCB - Top Side**



**Main PCB - Bottom Side**



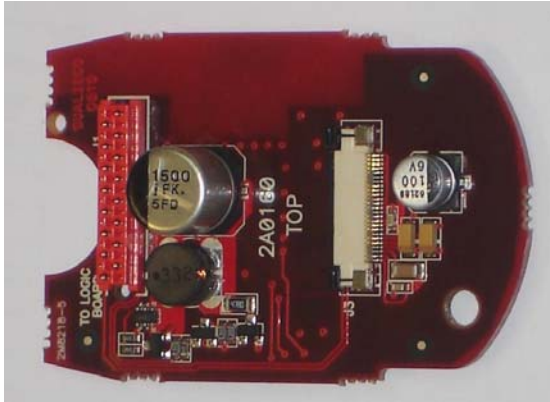
**Logic PCB - Top Side**



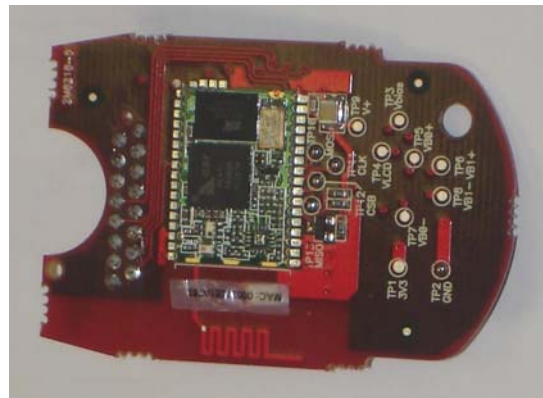
**Logic PCB - Bottom Side**



**LCD Interfacing PCB - Top Side**



**LCD Interfacing PCB - Bottom Side**



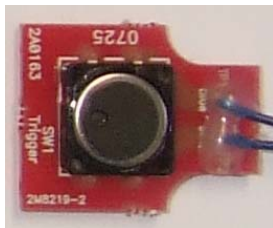
**Buzzer PCB - Top Side**



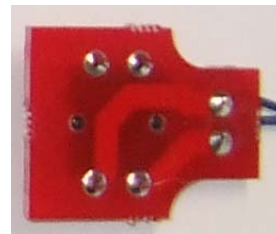
**Buzzer PCB - Bottom Side**



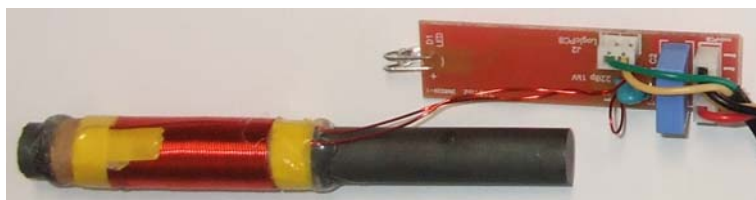
**Trigger PCB - Top Side**



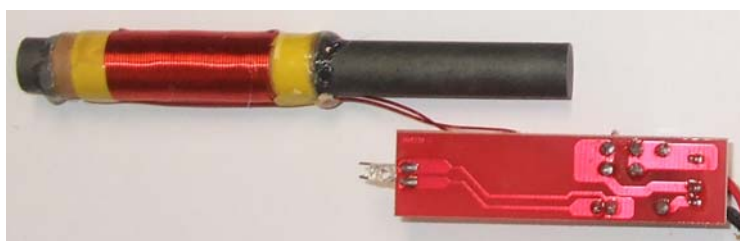
**Trigger PCB - Bottom Side**



**Antenna PCB - Top Side**



**Antenna PCB - Bottom Side**



**Internal Assembly**

