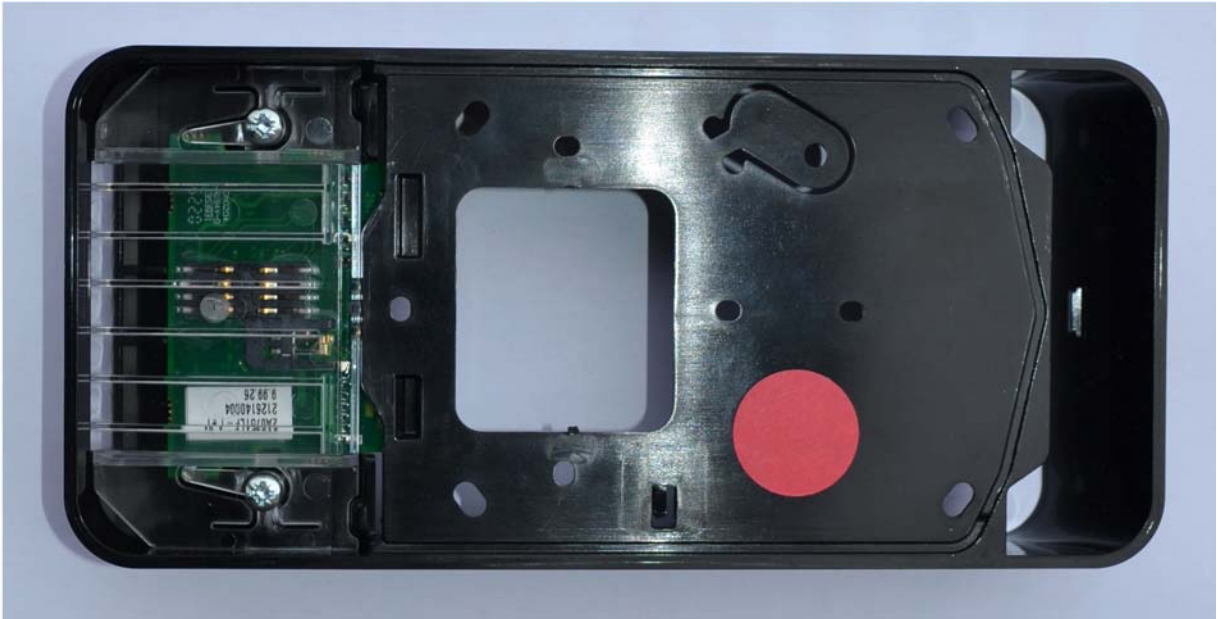


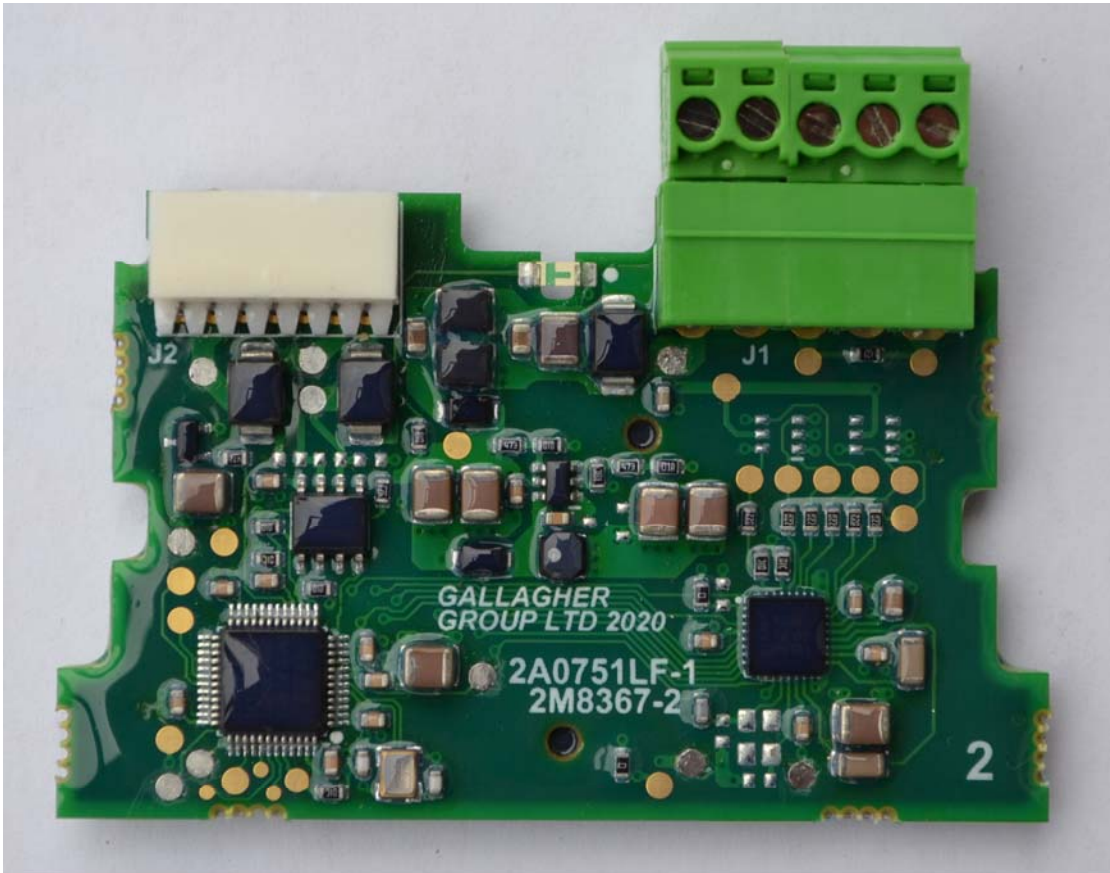
T21 PIV Reader - 13.56 MHz Antenna. PCB (front side) and LCD



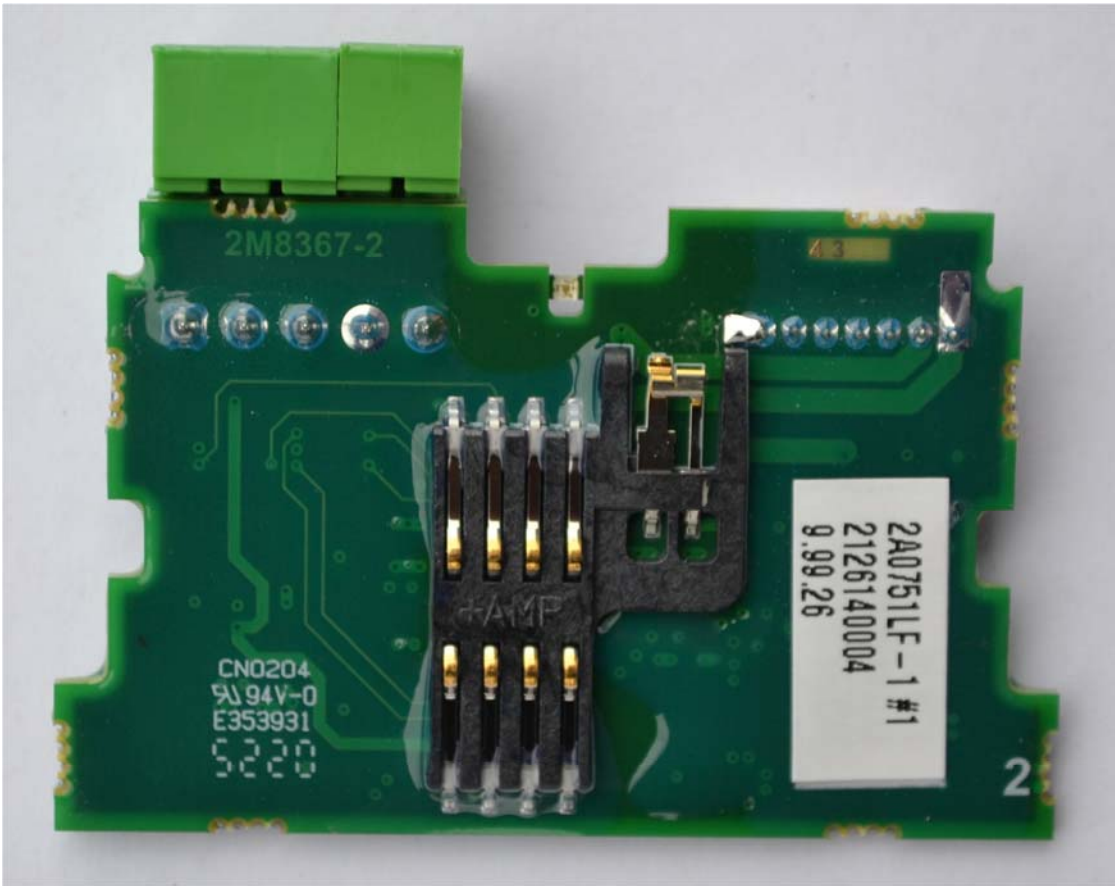
T21 PIV Reader - Back Cover Assembly (Front Side)



T21 PIV Reader - Back Cover Assembly
(Rear Side)



T21 PIV Reader - Contact Card Reader Interface Board (Front Side)



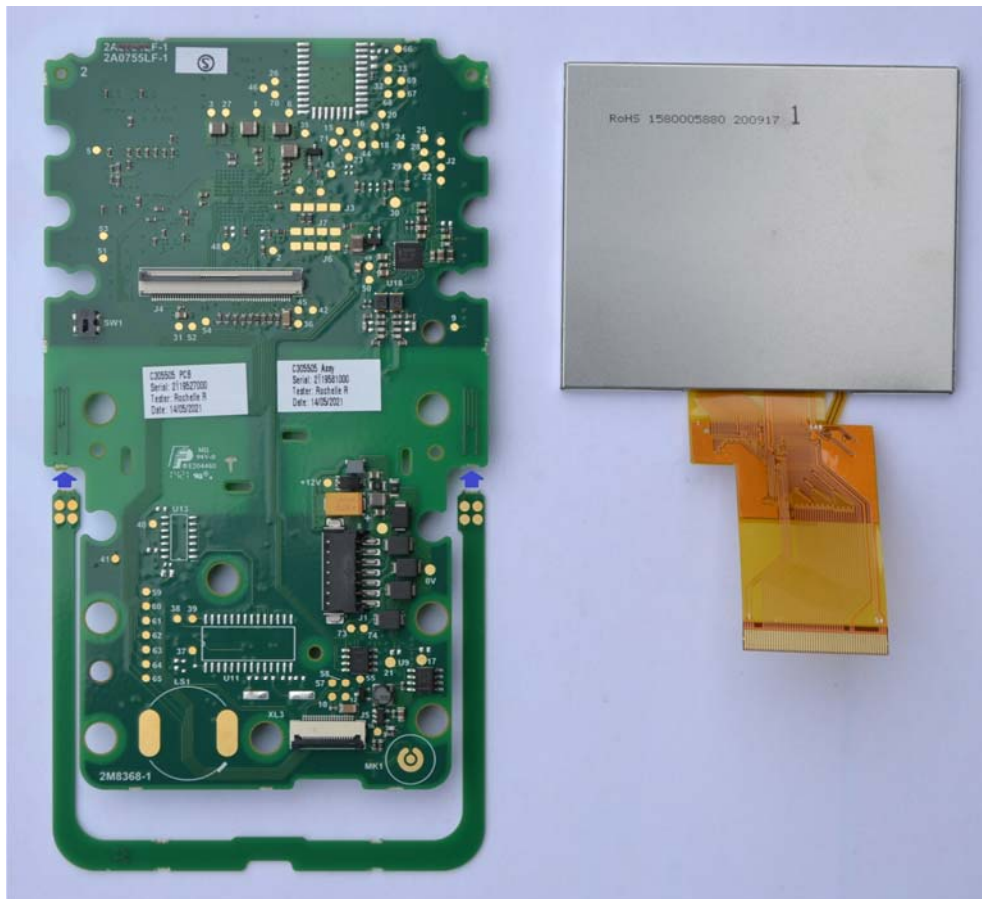
T21 PIV Reader - Contact Card Reader Interface Board (Rear Side)



T21 PIV Reader - Front and Back Covers



T21 PIV Reader - Internal Assembly 1



T21 PIV Reader - PCB (Rear Side) and LCD