

T20 Multi Tech - 125 kHz & 13.56 MHz Antennas. PCB (front side) and LCD



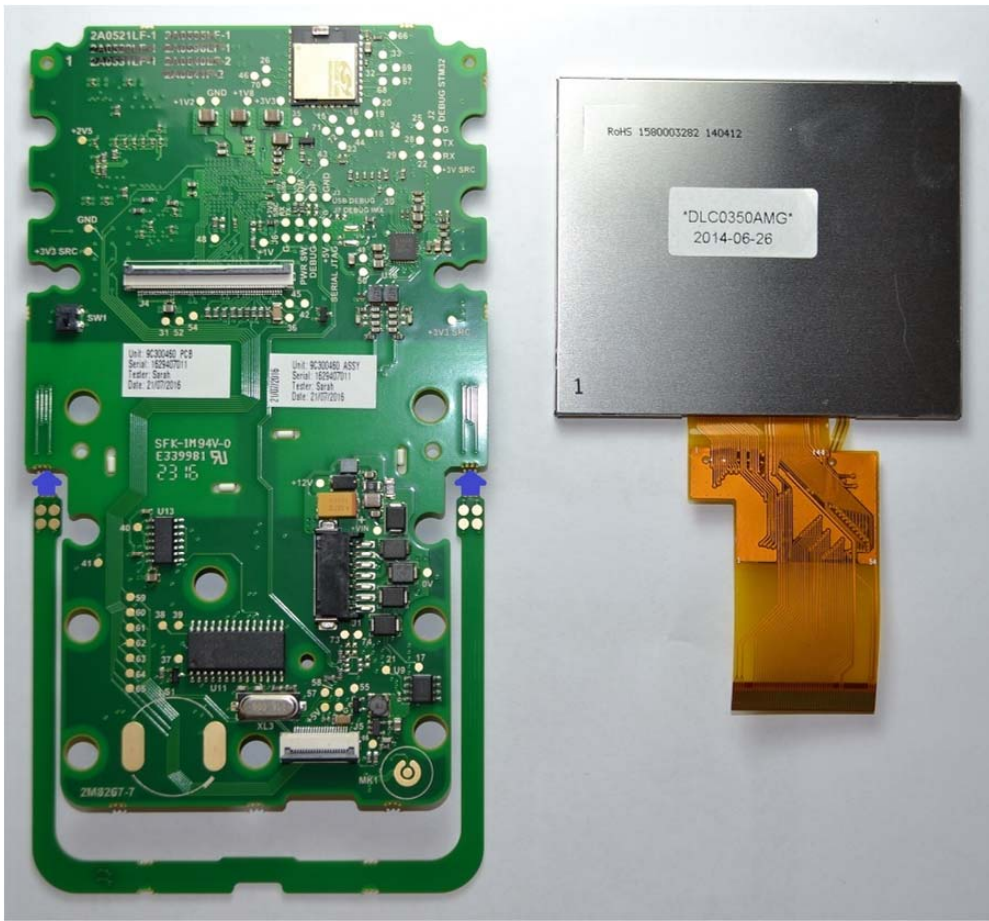
T20 Multi Tech - Front and Back Covers



T20 Multi Tech - Internal Assembly 1



T20 Multi Tech - Internal Assembly 2



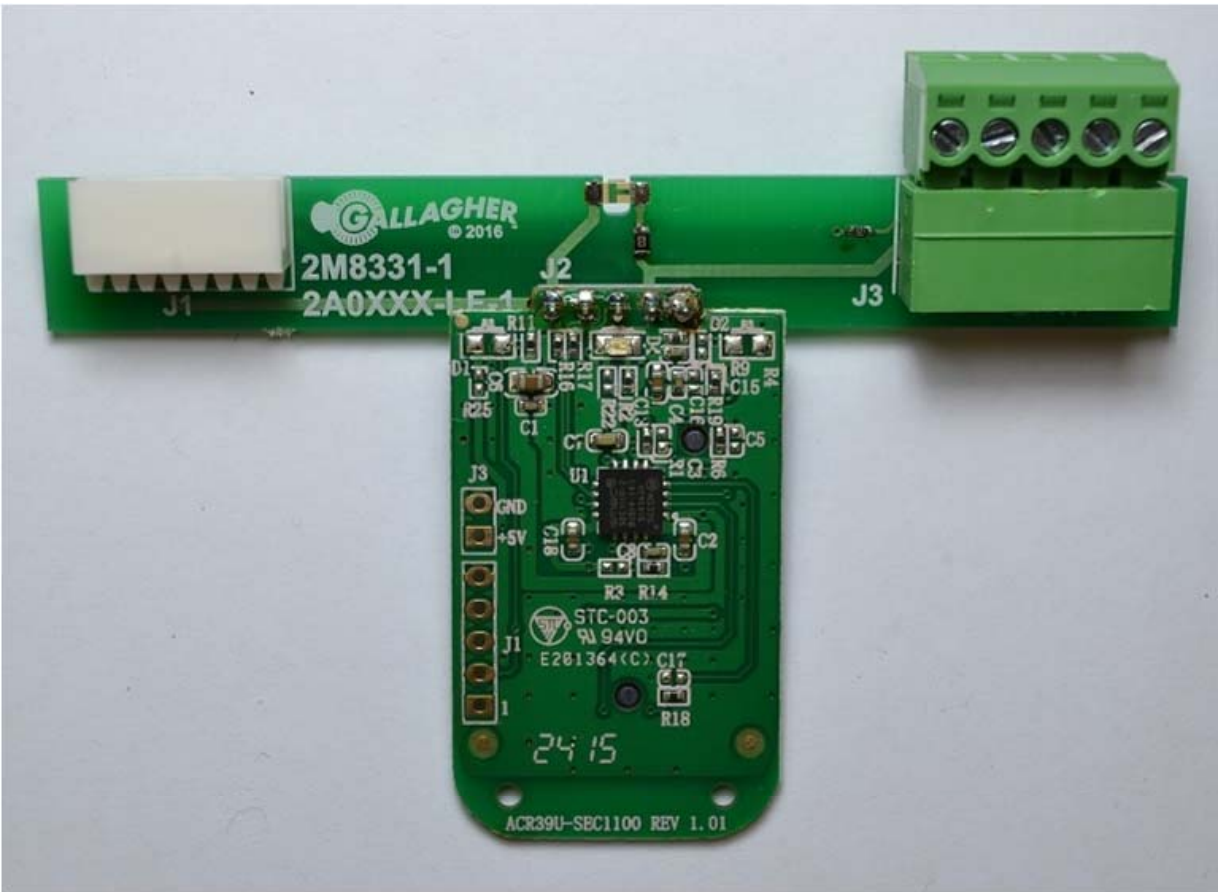
T20 Multi Tech - PCB (rear side) and LCD



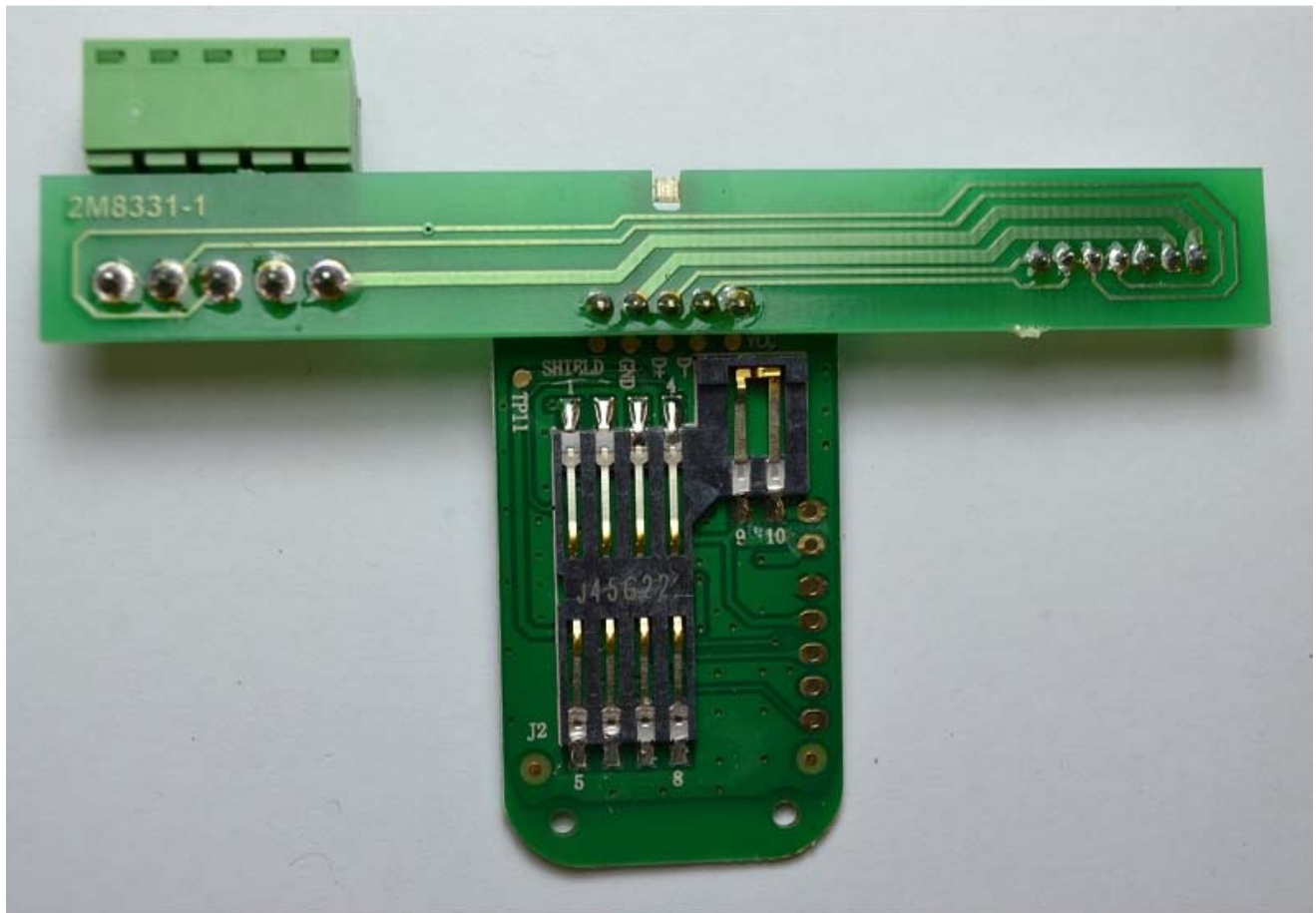
T21 Mifare / Multi Tech - Back Cover Assembly
(Front Side)



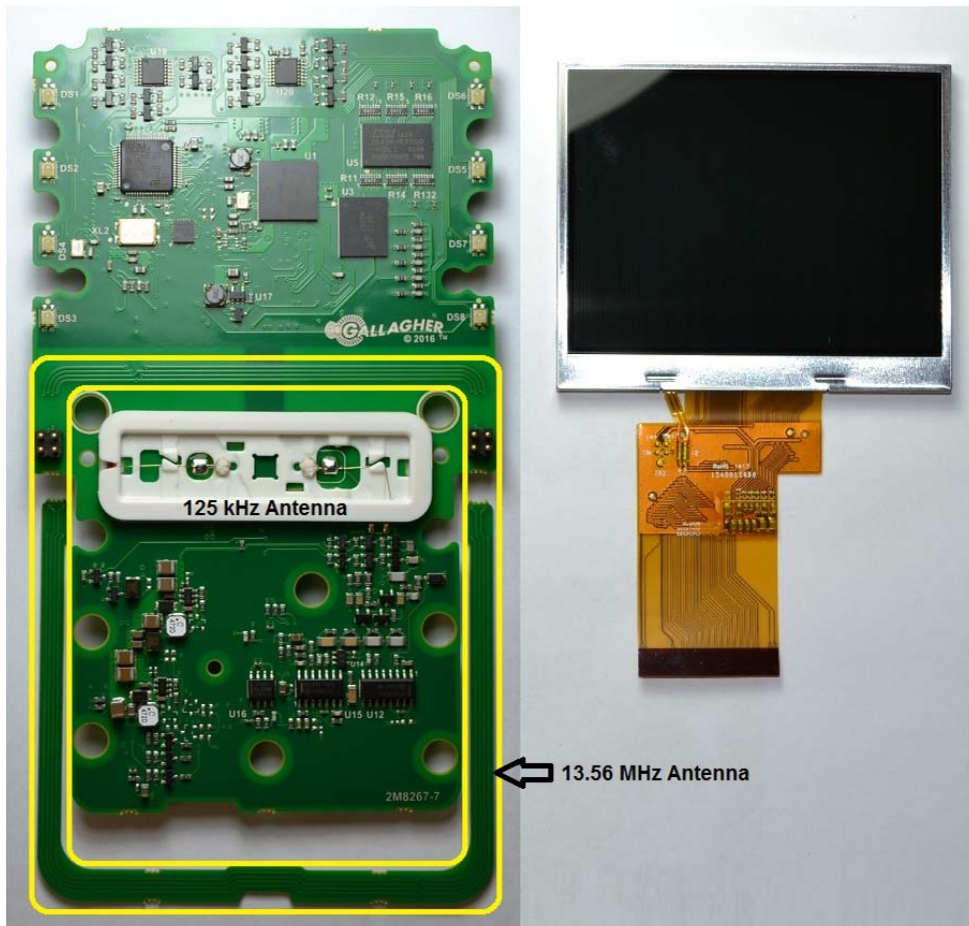
T21 Mifare / Multi Tech - Back Cover Assembly
(Rear Side)



T21 Mifare / Multi Tech - Interconnect Board (Front Side)



T21 Mifare / Multi Tech - Interconnect Board (Rear Side)



T21 Multi Tech - 125 kHz & 13.56 MHz Antennas, PCB (Front Side) and LCD



T21 Mifare - PCB (rear side) and LCD