

T20 Mifare - 13.56 MHz Antenna, PCB (front side) and LCD



T20 Mifare - Front and Back Covers



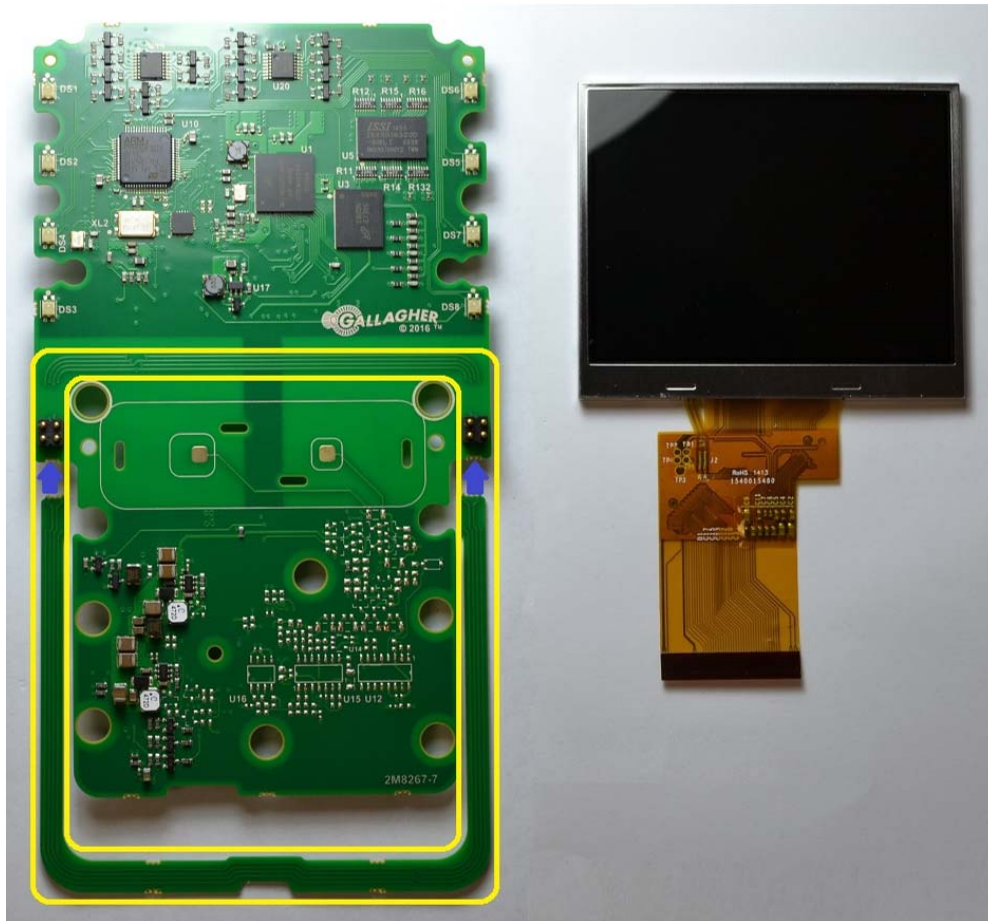
T20 Mifare - Internal Assembly 1



T20 Mifare - Internal Assembly 2



T20 Mifare - PCB (rear side) and LCD

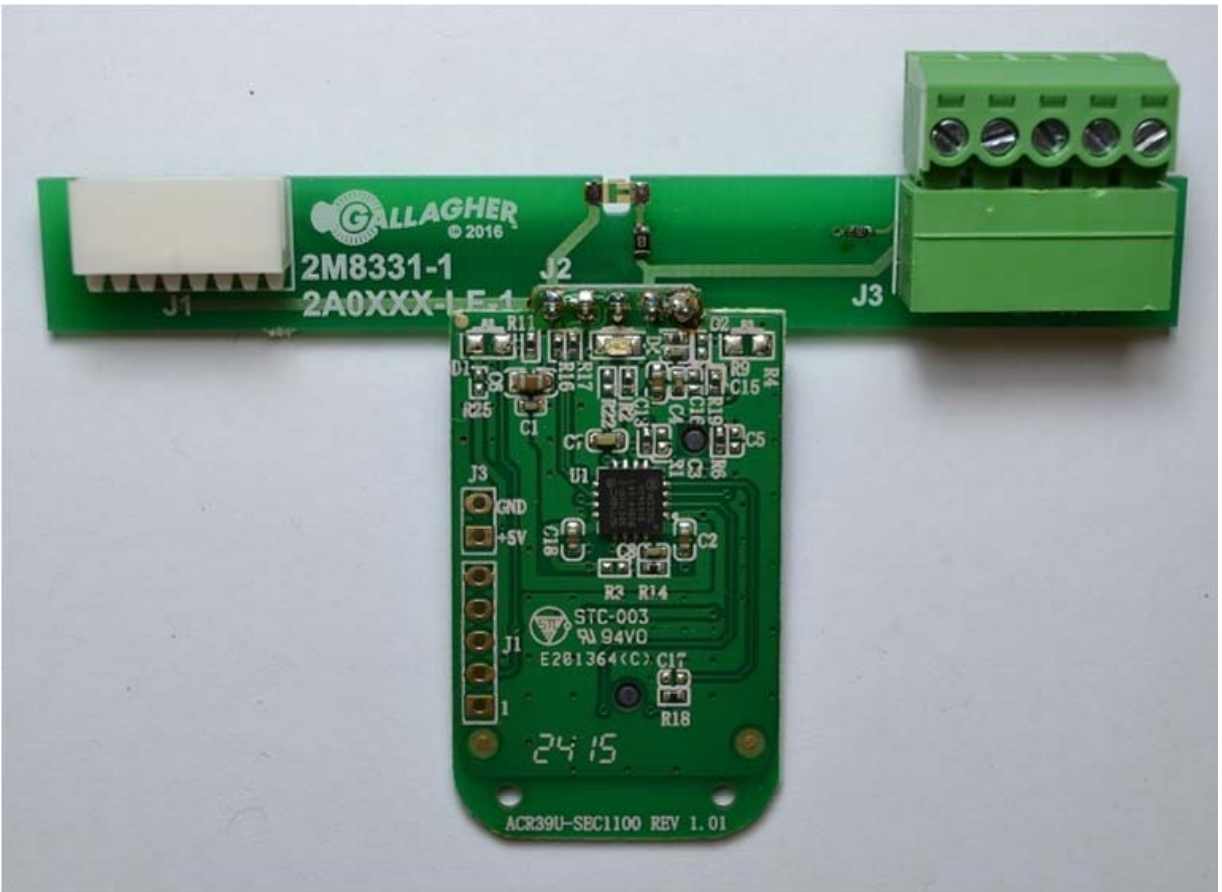


T21 Mifare - 13.56 MHz Antenna, PCB (front side) and LCD

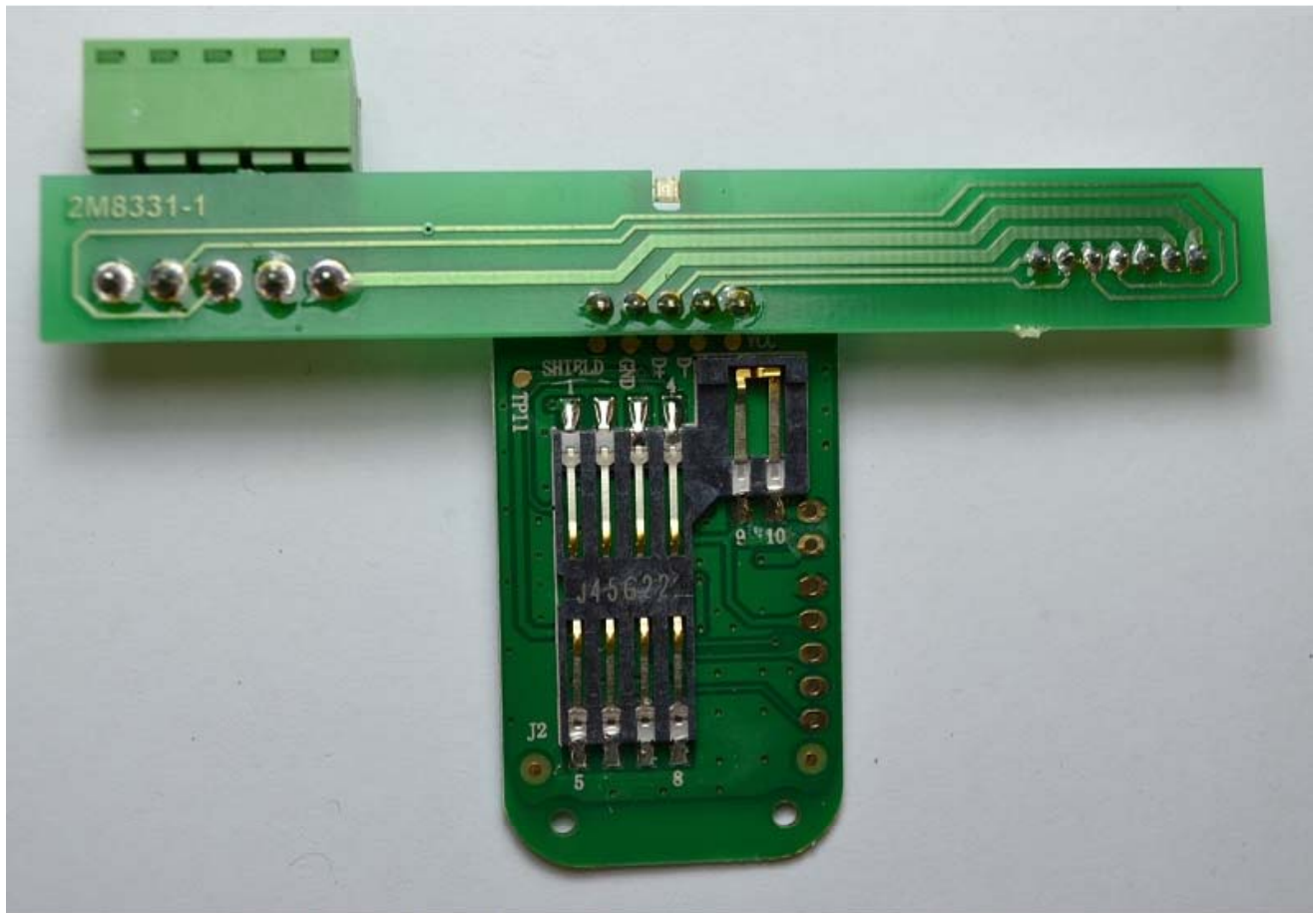




T21 Mifare / Multi Tech - Back Cover Assembly  
(Rear Side)



T21 Mifare / Multi Tech - Interconnect Board (Front Side)



**T21 Mifare / Multi Tech - Interconnect Board (Rear Side)**