

T11 Multi - assembly

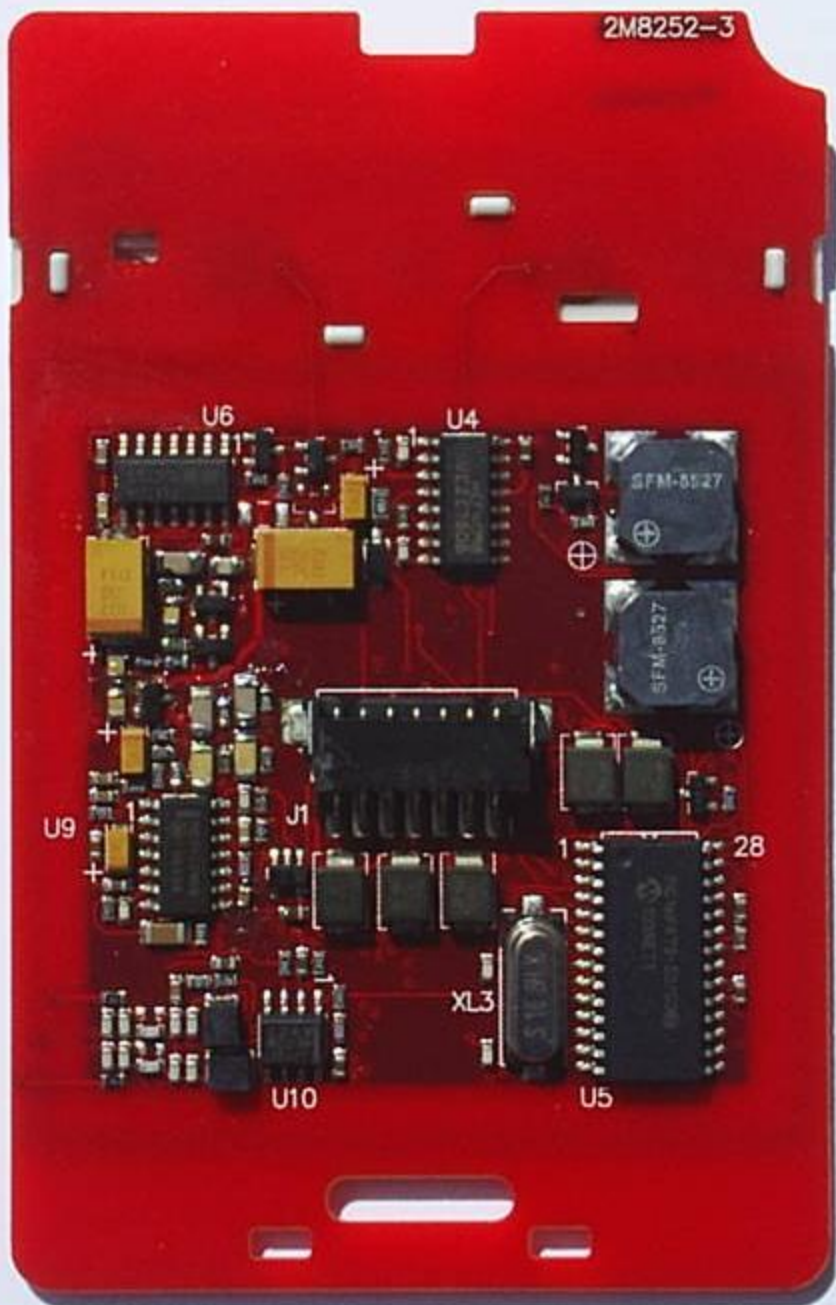


T11 Multi - Front cover and PCB assembly

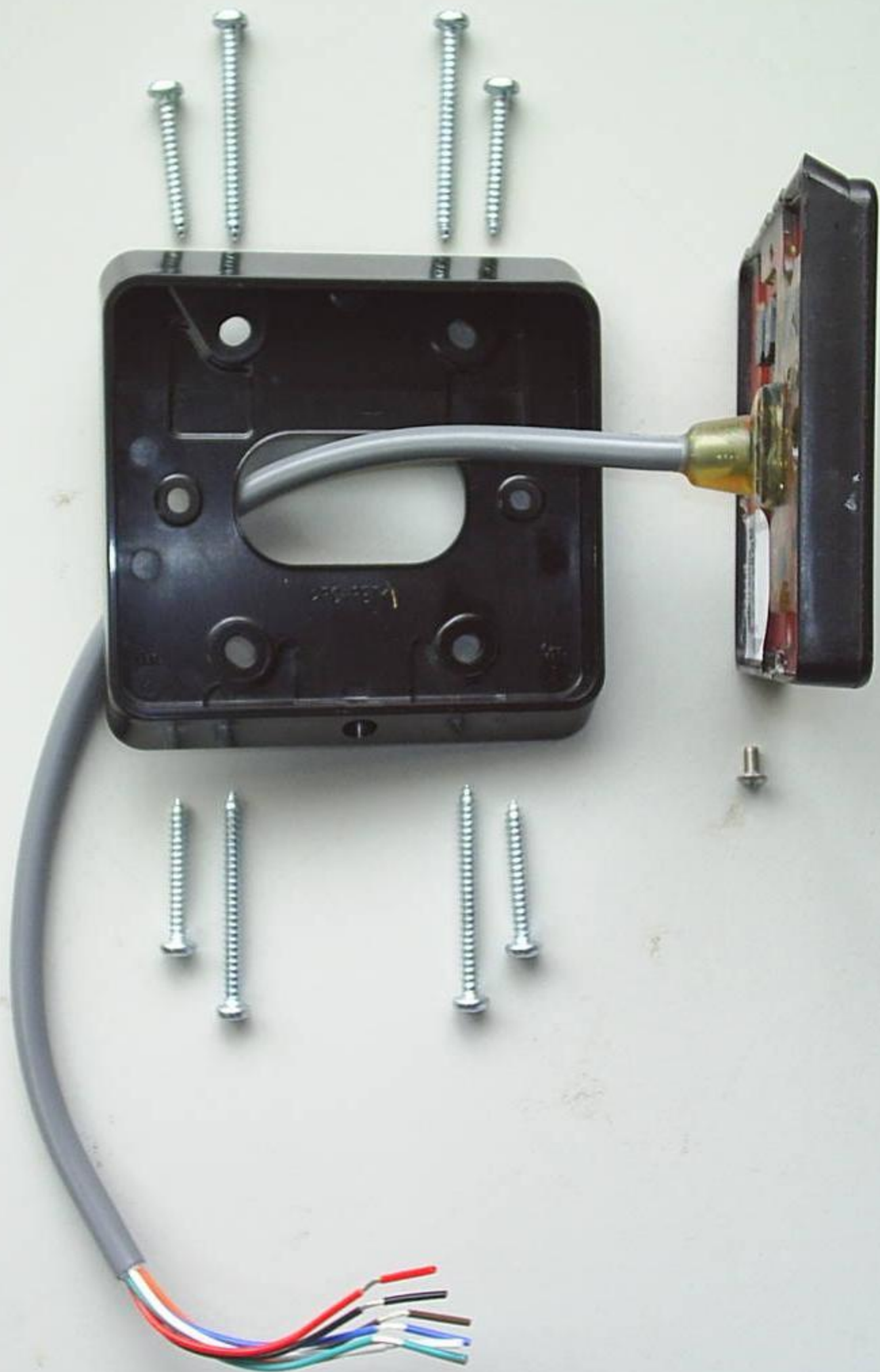


T11 Multi tech - Antennas & PCB (front side)

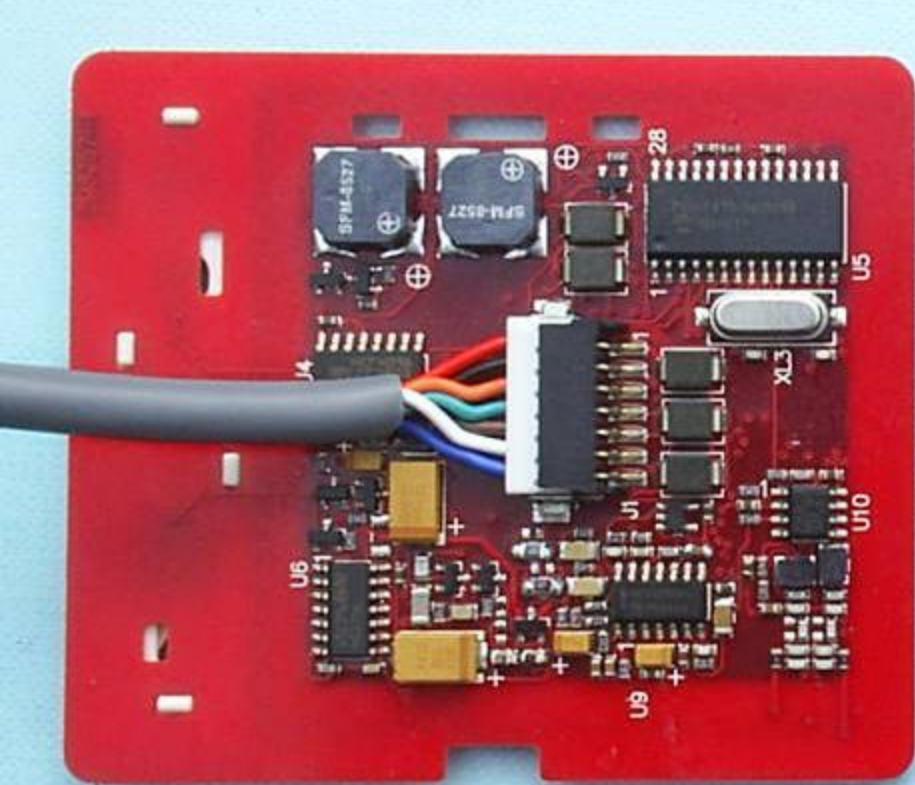
2M8252-3



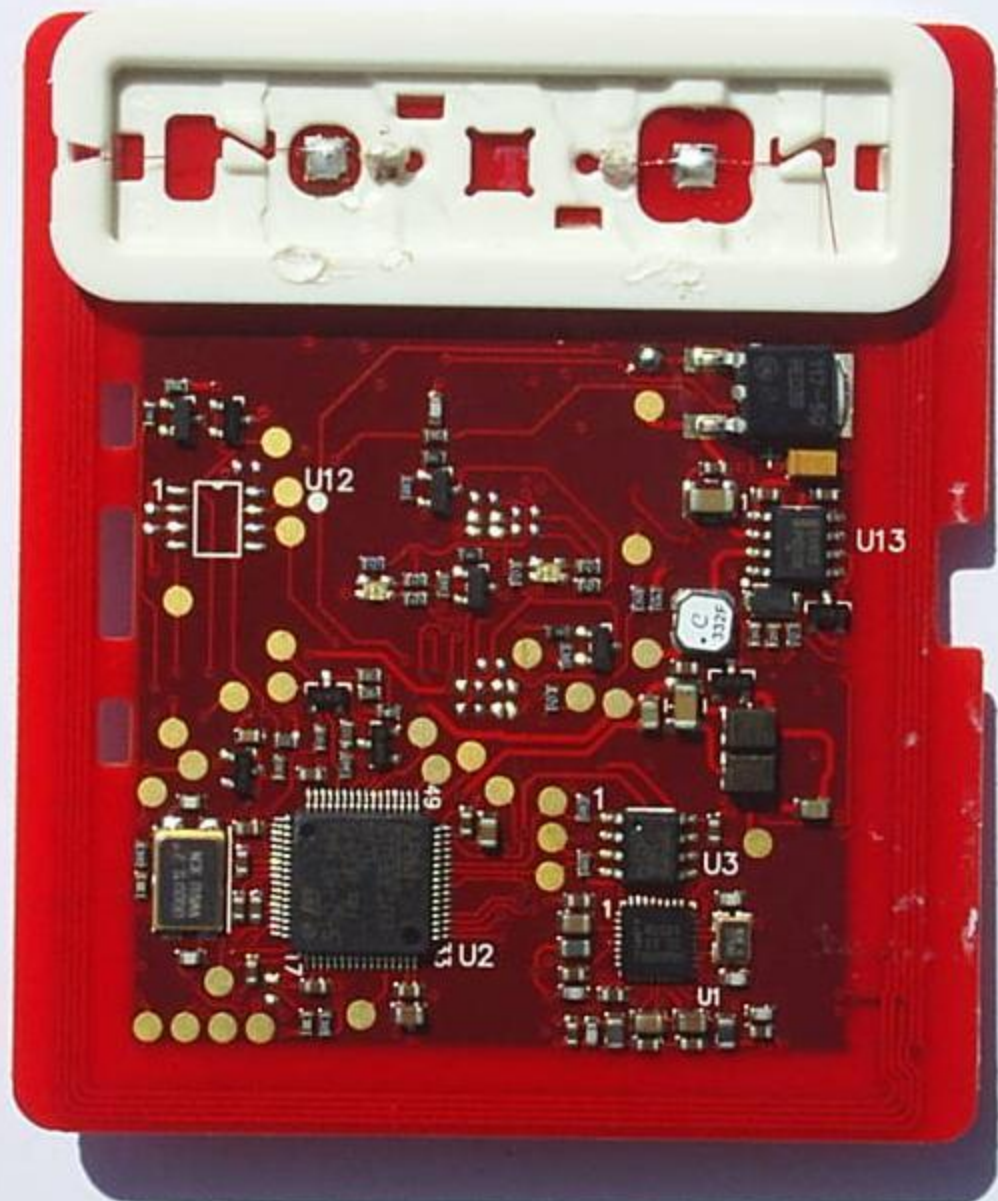
T11 Multi tech - PCB (rear side)



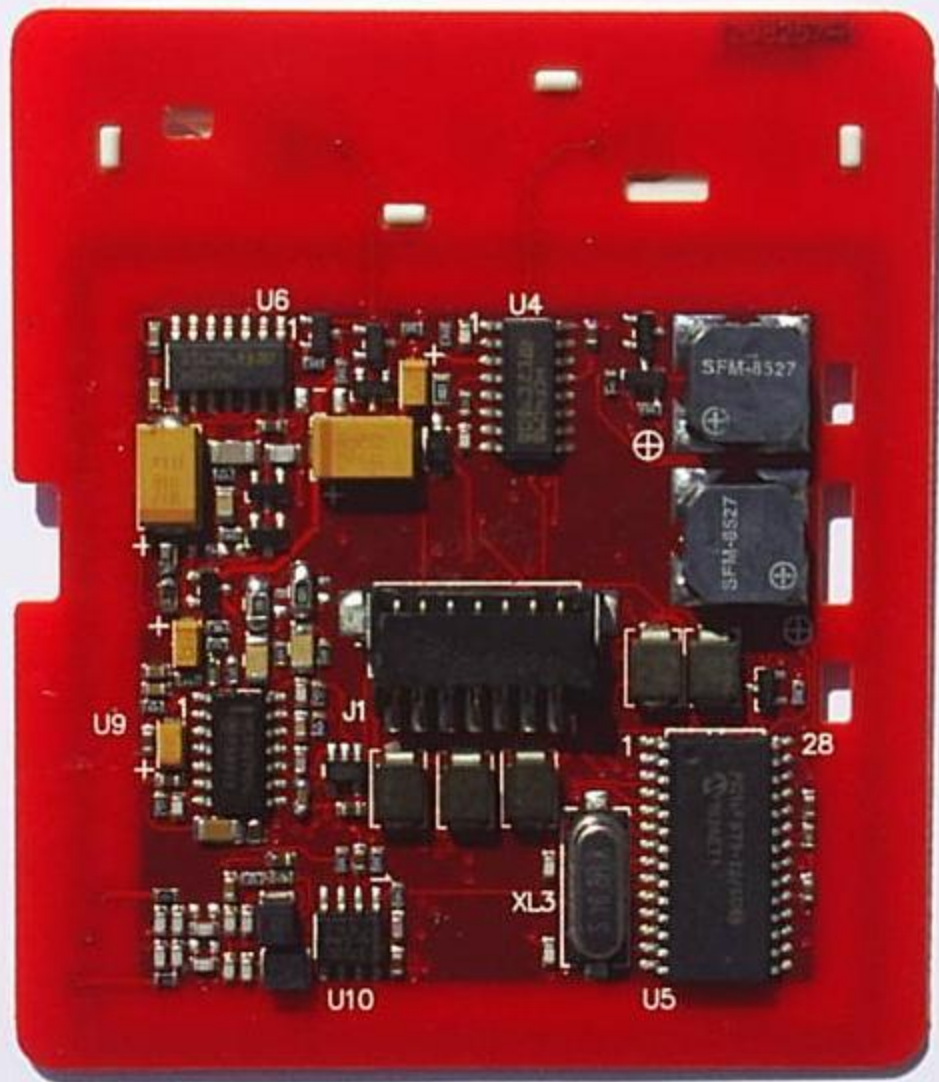
T12 Multi tech - assembly



T12 Multi tech - front cover & PCB assembly



T12 Multi tech - Antennas & PCB (front side)



T12 Multi tech - PCB (rear side)