

Quick Installation Guide for Z-Card 210

Here is a quick installation guide on what you need to know and do before using your Z-CARD 210. This guide also refers you to specific sections in the manual for further explanation. You will have to refer to some of these additional sections to know how to properly setup your Z-CARD 210.

- Step 1. You will need an IP address and the side preference from your CDPD Service Provider.
- You need a CDPD account for each Z-CARD 210. The carrier will provide an IP address for each account. You will need to give them the Z-CARD 210's equipment ID (EID) which can be found on the label on top of the Z-CARD 210. The IP address is a valid Internet address and is matched up with your unique EID.
 - Side Preference: Does your Service Provider prefer A-side or B-side? Is there another CDPD Service Provider in your area? Usually you must give CDPD carrier the application area for the Z-CARD 210 to determine this setting.
- Step 2. Installing Z-Card CDPD Utilities for Windows 95
- Insert the disk "Z-Card CDPD Utilities for Windows 95 Disk #1" into any 3 1/2 floppy drive.
 - Click the **Start** button in the task bar and select the **Run** option.
 - Type "A:\setup.exe", and click **OK** or press **Enter**.
 - Follow the instructions on the **Setup** screen and replace the disk "Z-Card CDPD Utilities for Windows 95 Disk #2" when required to.



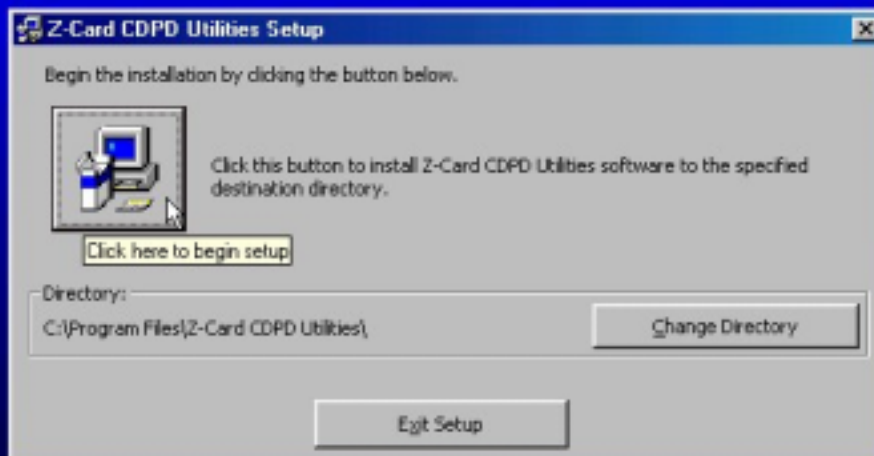
- Wait for the **Z-Card CDPD Utilities Setup** window to appear, then click **OK**.

Z-Card CDPD Utilities Setup

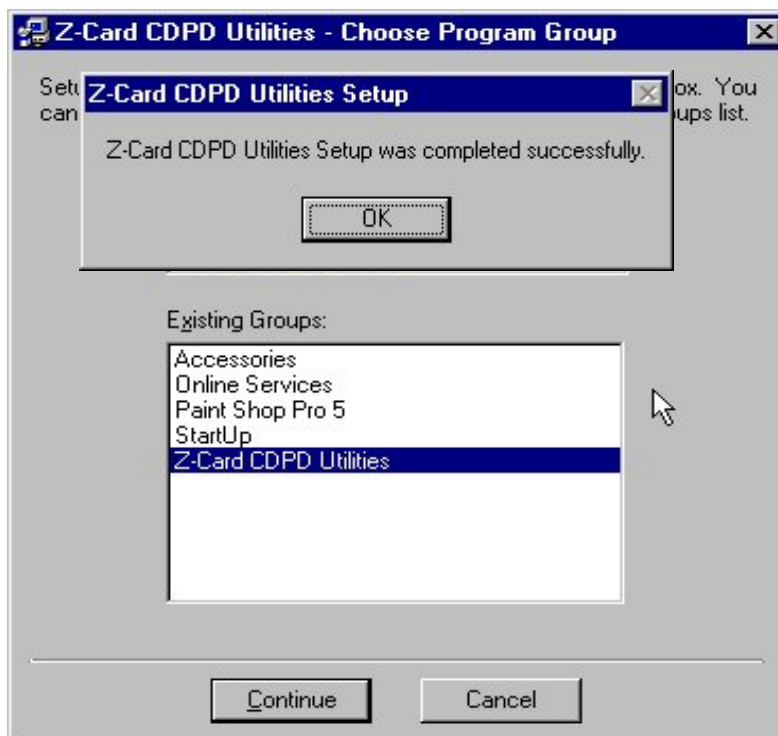


- f. In the next window, click the big button with a computer picture, and the **Z-Card CDPD Utilities –Choose Program Group** dialog box will appear.

Z-Card CDPD Utilities Setup



- g. Choose **Z-Card CDPD Utilities** in the **Program Group** field. Then click **Continue** to complete the setup.
- h. Click **OK** to complete the setup program.



- i. Restart the computer.

Step 3. Establish Hardware Connection To Setup your Z-CARD 210

- a. **With the Z-Card 210 modem's label facing down, insert Z-Card 210 into your notebook's PCMCIA slot.**
- b. The Win95/98 will automatically detect the modem. A **New Hardware Found** message shows up.

Step 4. Set up Dial-UP Network

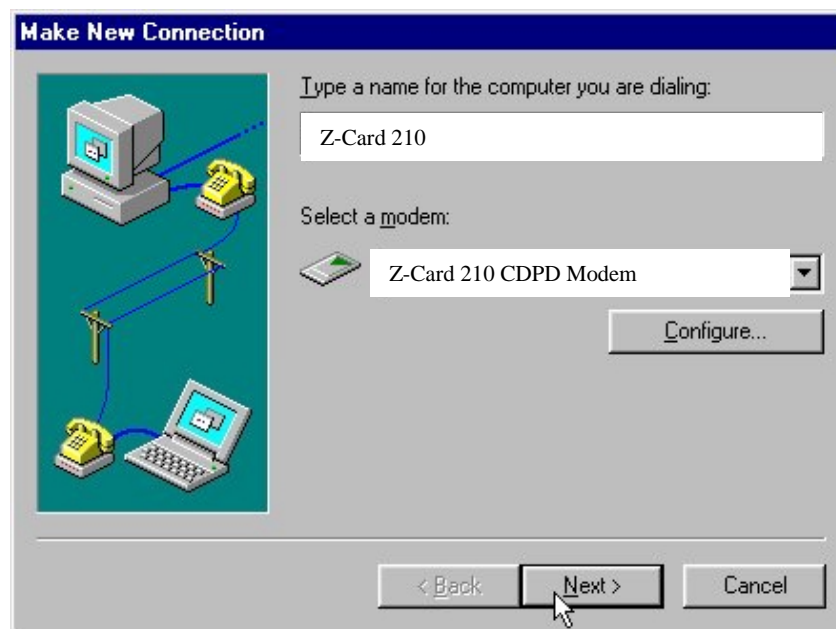
- a. Double-click the **My Computer** icon on the desktop, then open **Dial-Up Networking**.



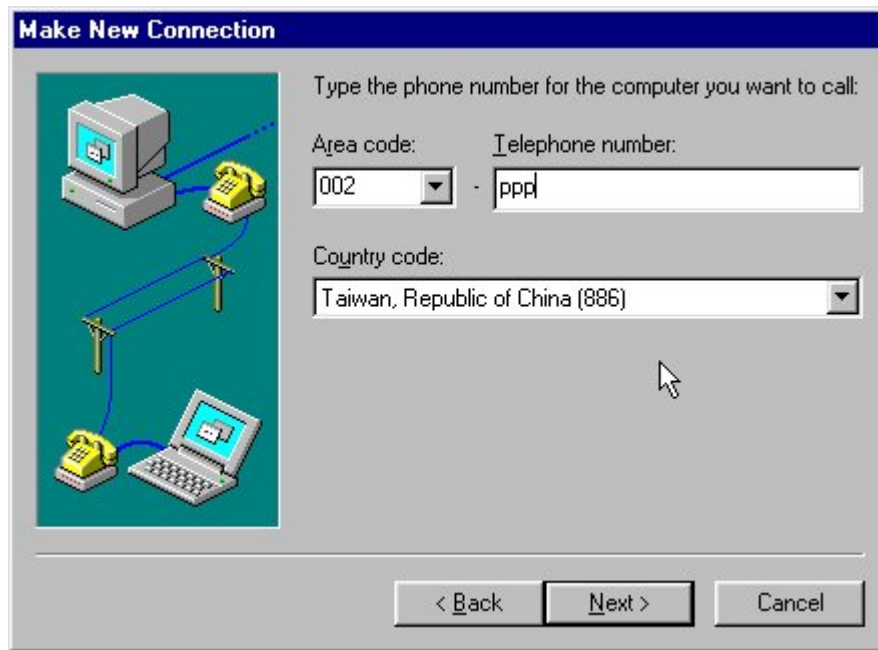
- b. Choose the **Make New Connection** icon and get into the dialog window.



- c. In the **Make New Connection** window, input the name of the connection and select Z-Card 210 CDPD Modem (in the type of the modem). Then select **Next** to view the next window.



- d. In this window you should input proper information of Area code, Telephone number, and country code. For example, if you're in Taiwan, you should input the area code with 002, the Telephone number with PPP, and the Country code with Taiwan, Republic of China (886). Then click **Next** to get into the next window.



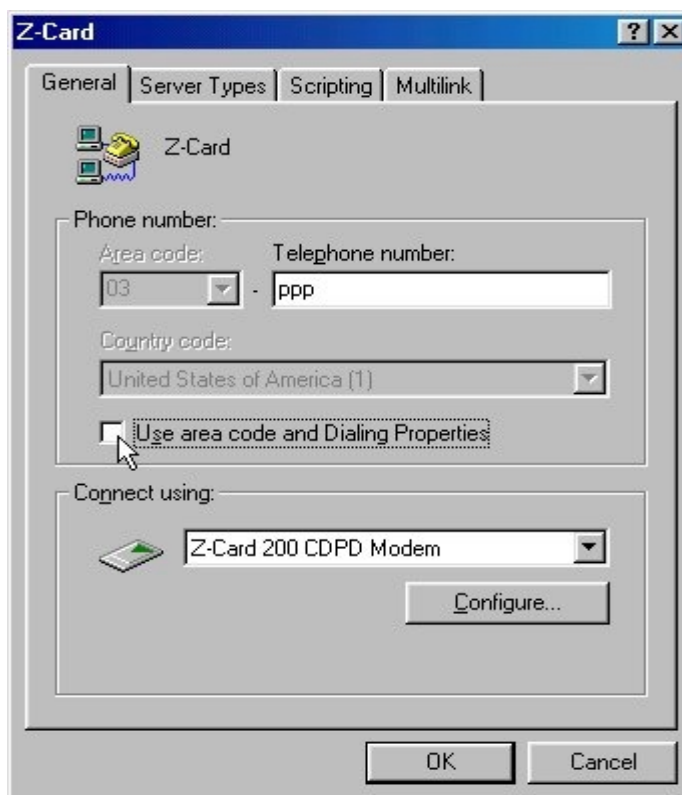
- e. Click **Finish** in the following window and Windows 95/98 will create an icon for your new connection.



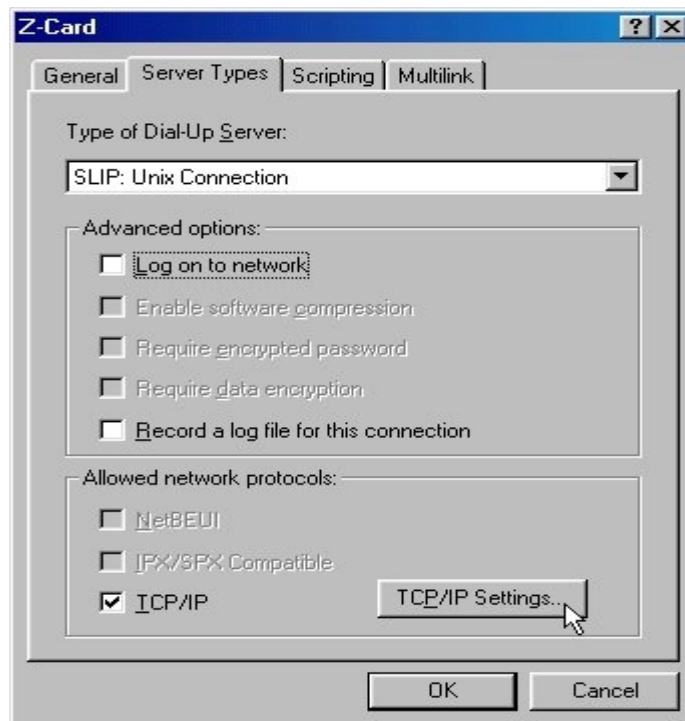
- f. Select the icon of your new connection and choose the **Properties** item from the File function menu to open the next window.



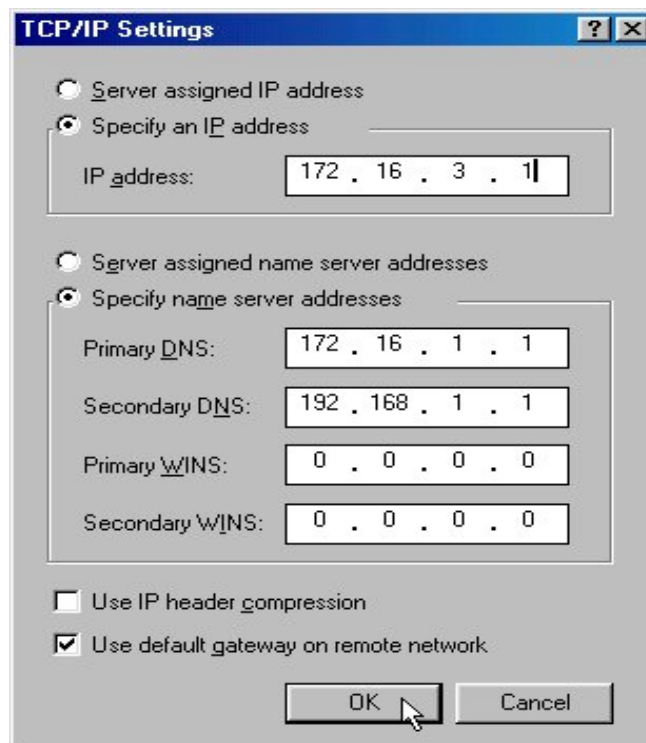
g. In the **General** tab, uncheck **Use country Code and Area Code**.



h. Go to **Server Types**. Select “**Type of Dial-Up Server**” with “**SLIP: Unix Connection**” and uncheck the “**Log on to network**”. Then click the “**TCP/IP Settings**” button.



- i. Select **“Specify an IP Address”** and then input the IP address provided by the service provider. Select **“Specify name server addresses”** and input IP addresses in the Primary DNS as well as Secondary DNS fields. Uncheck **“Use IP Header Compression”** and then click **OK** to finishing TCP/IP Setting.



Step 5. To configure the Z-CARD 210 using AT commands

- a. To send AT Command to Z-Card 210, you must find a communications program to be operated in ASCII terminal emulation mode under your PCs (host). The followings are some typical programs:

HYPER TERMINAL in WINDOWS 95

TELIX or similar alternatives

In the Terminal Program you choose, set the parameters of the COM Port as follows:

19200 bps, 8 data bits, No parity check and 1 stop bit.

- b. AT Command for the Z-CARD 210 setup

- i. Set the IP Address

AT!Ixxx.xxx.xxx.xxx , xxx.xxx.xxx.xxx is the IP Address e.g.

AT!I203.67.40.233

- ii. Set the Side Preference

AT\N3 A Side Preference , AT\N4 B side Preference

- iii. Save all you setting into memory and Reset your Z-CARD 210

AT&W

ATZ

Step 6. Connecting to the CDPD Network

- a. **Connecting to the CDPD network -- Run the TCP/IP stack**

Click **My Computer**, select **Dial-Up Networking**, and double-click **Z-210**. The **Connect to** dialog will appear. Click **Connect** to start the connection. Wait for the **Terminal Screen** dialog to appear, then click **Continue** to complete the connection.

Step 7. Start Observer

- a. Click **Start** in the task bar, highlight **Z-Card CDPD Utilities**, and double-click **Observer**.

- i. Read the Observer status indicators. Definition of each indicator is described in more detail in the **Z-Card 210 User's Manual**.

- ii. Open the Configuration Dialog, make sure that IP address and Channel Preference are set correctly. Either enable the **Automatic Seek** function or type the channel number of local area in the **Manual Channel** box.

- iii. Read the register and channel status indicators at **Observer** to ensure that your Z-Card 210 is registered to the CDPD network and has acquired an available channel, then start enjoying wireless Internet!