

Hardware Installation for XI-300

To install XI-300 wireless LAN PCMCIA adapter, please follow these steps:

Step1: Insert the PCMCIA Adapter

1. Find an available Type II or Type III PCMCIA slot in your computer.
2. With the PCMCIA adapter's 68-pin connector facing the PCMCIA slot and its "XI-300 / PCMCIA" label facing up, slide the PCMCIA adapter completely into the PCMCIA slot.

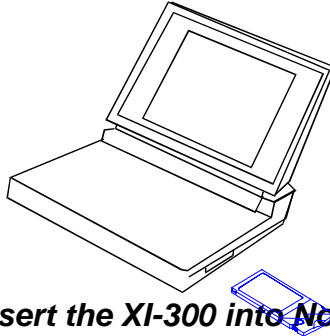


Fig Insert the XI-300 into Notebook

NOTE: The PCMCIA slot allows "hot swap" of PCMCIA adapter. You may therefore insert or remove your XI-300 / PCMCIA adapter from the slot anytime, even when the power of your computer is on.

Step2: Setup PCMCIA Driver

Please check your PCMCIA driver to install LANescape XI-300. Then, continue the installation steps - "Software Installation".

Setup LANEscape XI-300 for Windows 95 / 98

1. Insert the XI-300 PCMCIA adapter into a standard type II PCMCIA slot in your notebook.
2. Windows 95/98 will automatically detect the new hardware and will prompt you to install the driver needed.



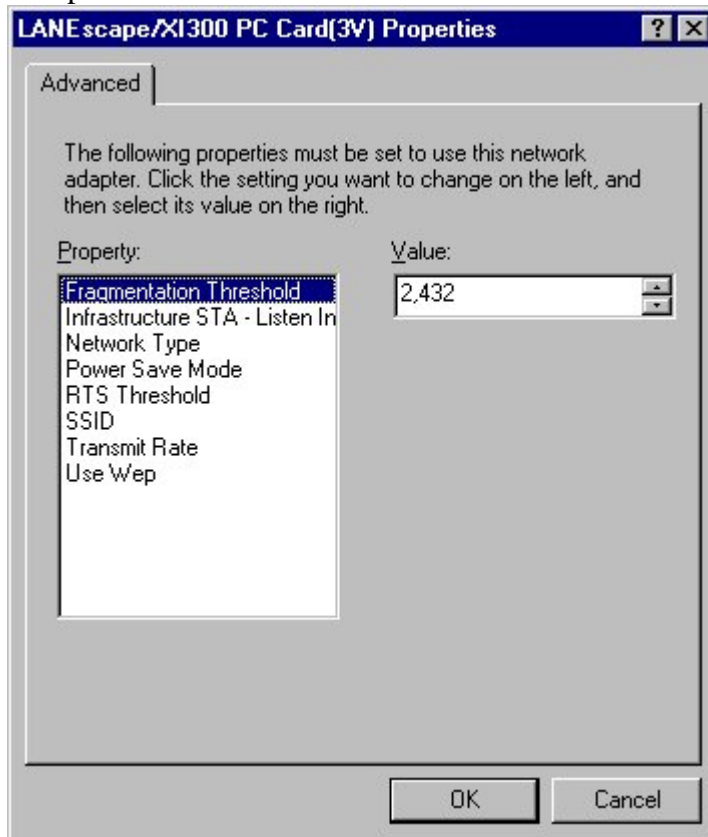
3. Select “Search for the best driver for your device”.



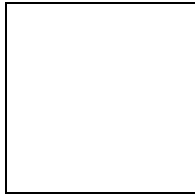
4. Select the location of driver from "Floppy disk devices", insert the diskette labeled "LANEscape XI-300 Driver & Utility Diskette" into any 3 1/2 floppy drive in your computer and then click **Next**.



5. Windows 95/98 found "LANEscape XI-300 PCMCIA Adapter", then click **Next** and Set parameters for XI-300



7. Click **Finish** to complete the hardware installation.



- Restart the computer.



- Open the **Control Panel** folder, double-click **System** and Adapters to see if there is any error message appears. If no, that means your XI-300 works well.

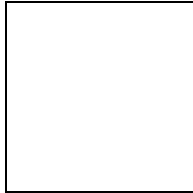
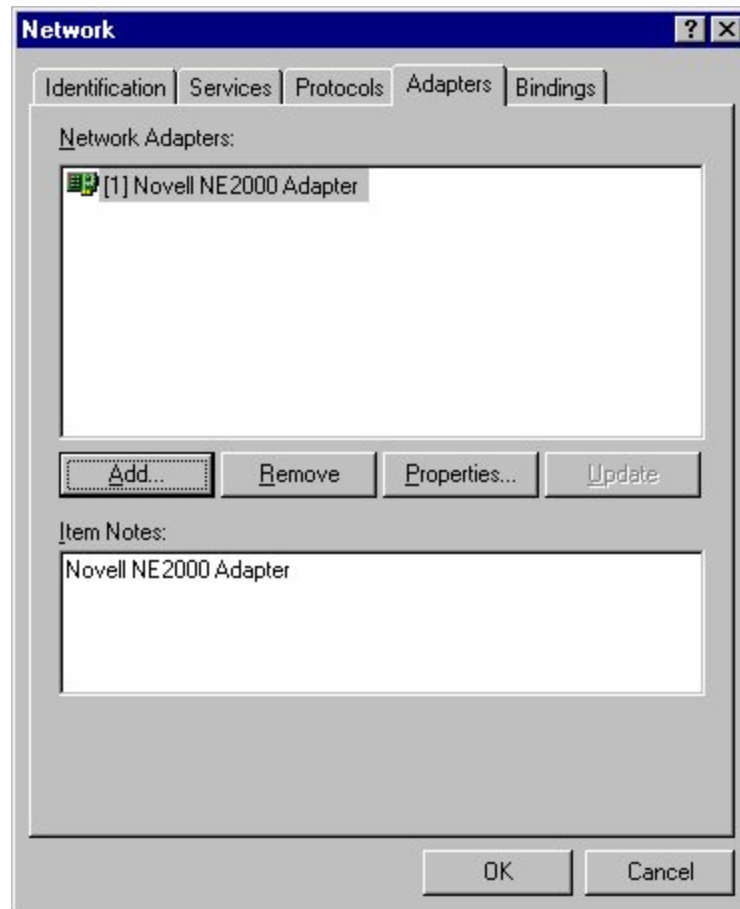


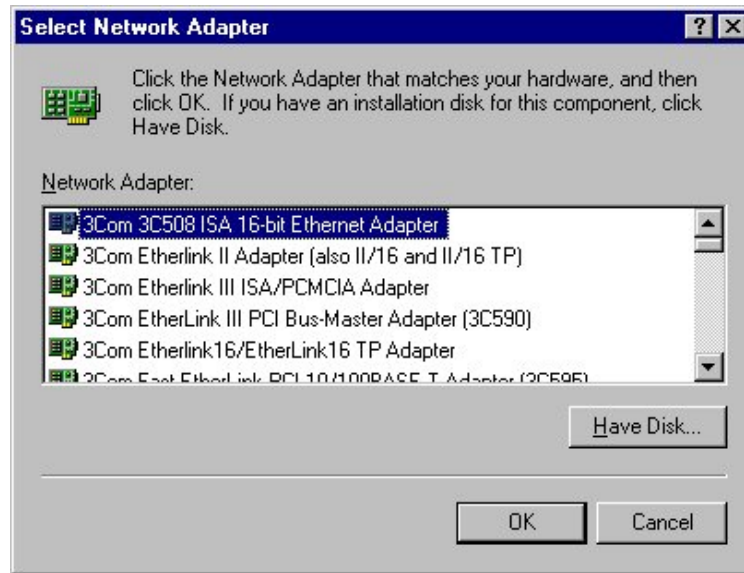
Fig. Check if XI-300 works properly.

Setup LANEscape XI-300 for Windows NT 3.51/4.0

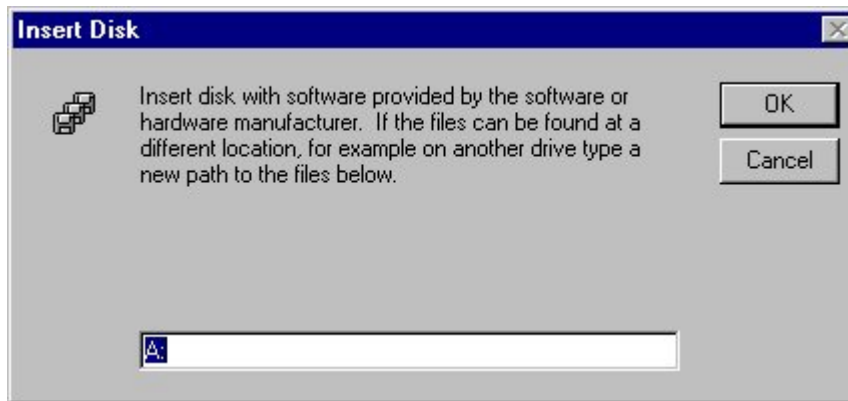
1. Login as Administrator.
2. From the desktop, select **Control Panel**, double-click **Network**, go to the **Interface Card** tab, and then click the **Add** button.



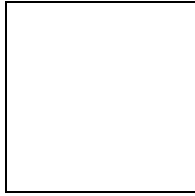
3. Windows NT will present a list of all its supported adapters. Select **OTHERS**, or click **Have Disk** to continue.



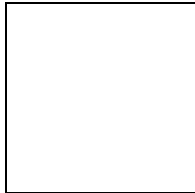
4. Windows NT will ask for the drive/path containing the LANEscape XI-300 Windows NT drivers. Insert the XI-300 Driver and Utility diskette into the floppy drive, and then type **A:**



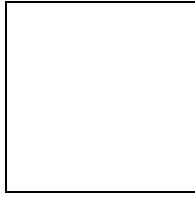
5. Windows NT will attempt to locate an INF file in the specified path. If you have entered the path name correctly, Windows NT should copy the appropriate drivers to the Windows NT system. You need to recognize the selection.



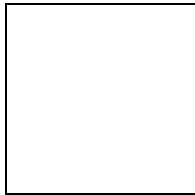
6. A “LANEscape/XI-300 Wireless LAN Adapter Setup” dialog box will show up. Please select the “**Default Channel**” ”**Network Type**” ”**RTS Threshold**” and “**ESSID**” manually. Your XI-300 adapter will thereafter work on this configuration under Windows NT. Press **OK** to continue.



7. At this point, the drivers would have been properly copied and the installation would proceed to the next step --- “**Network Setup**”.



8. Restart the system.



9. To ensure whether the XI-300 adapter works fine or not, go to **Control Panel** and Double-click **Devices** to check device.

Install Wireless LAN Utility for Windows 95/98

1. Insert **LANescape XI-300 Driver & Utility Diskette** into floppy drive, and then execute `A:\WLU\setup.exe`



Fig. Step1 of Wireless LAN Utility setup.



Fig. Step2 of Wireless LAN Utility setup.

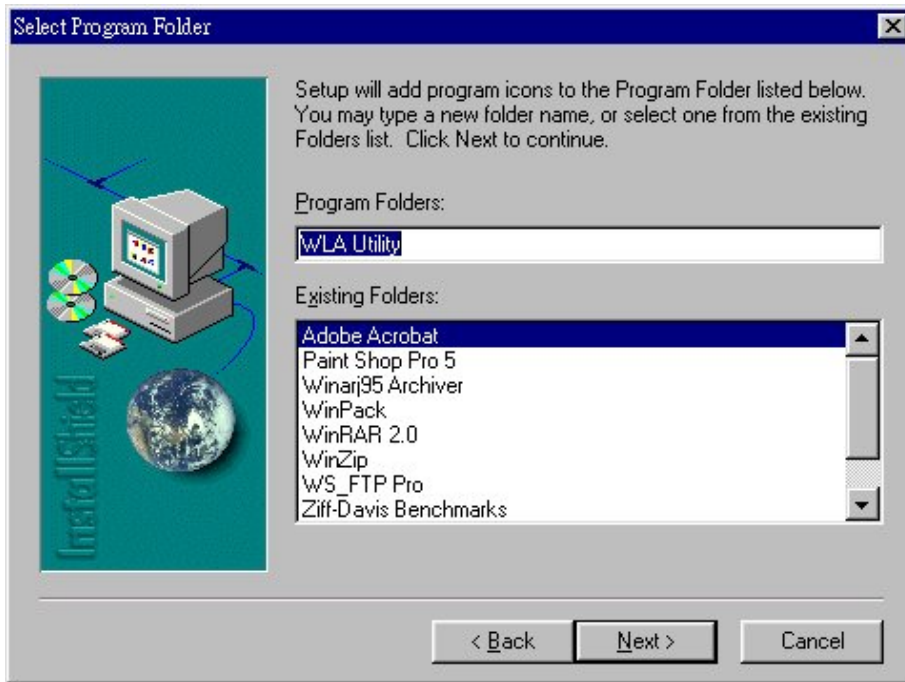
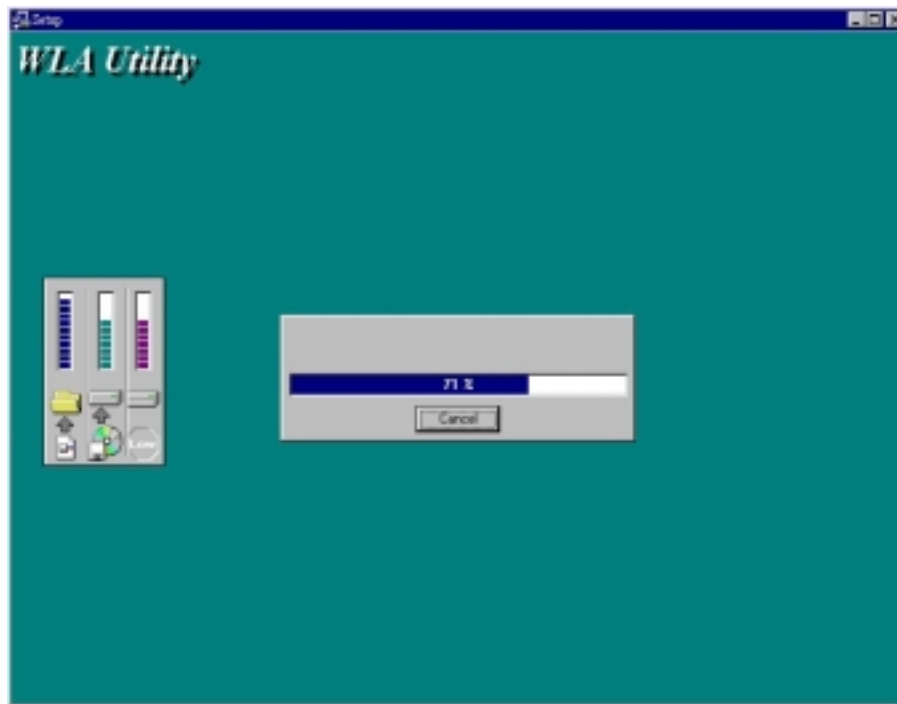


Fig. Step3 of Wireless LAN Utility setup.

Fig. Step4 of Wireless LAN Utility setup.



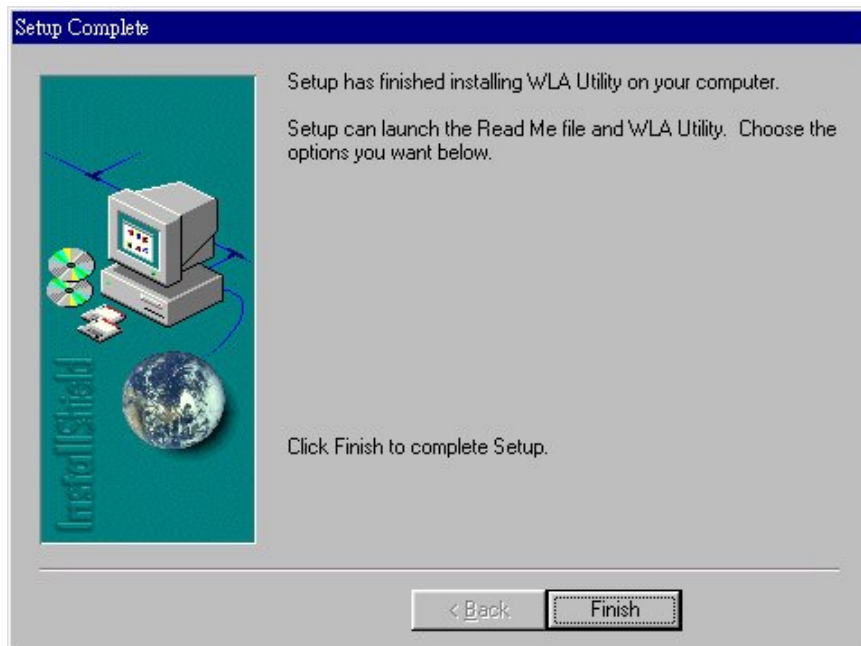


Fig. Step5 of Wireless LAN Utility setup.

Navigating The LANEscape Utility

To set up your wireless network environment, please follow these steps:

Step : Configure the adapter - Select "Network Configuration" in the main menu screen and follow the instructions.

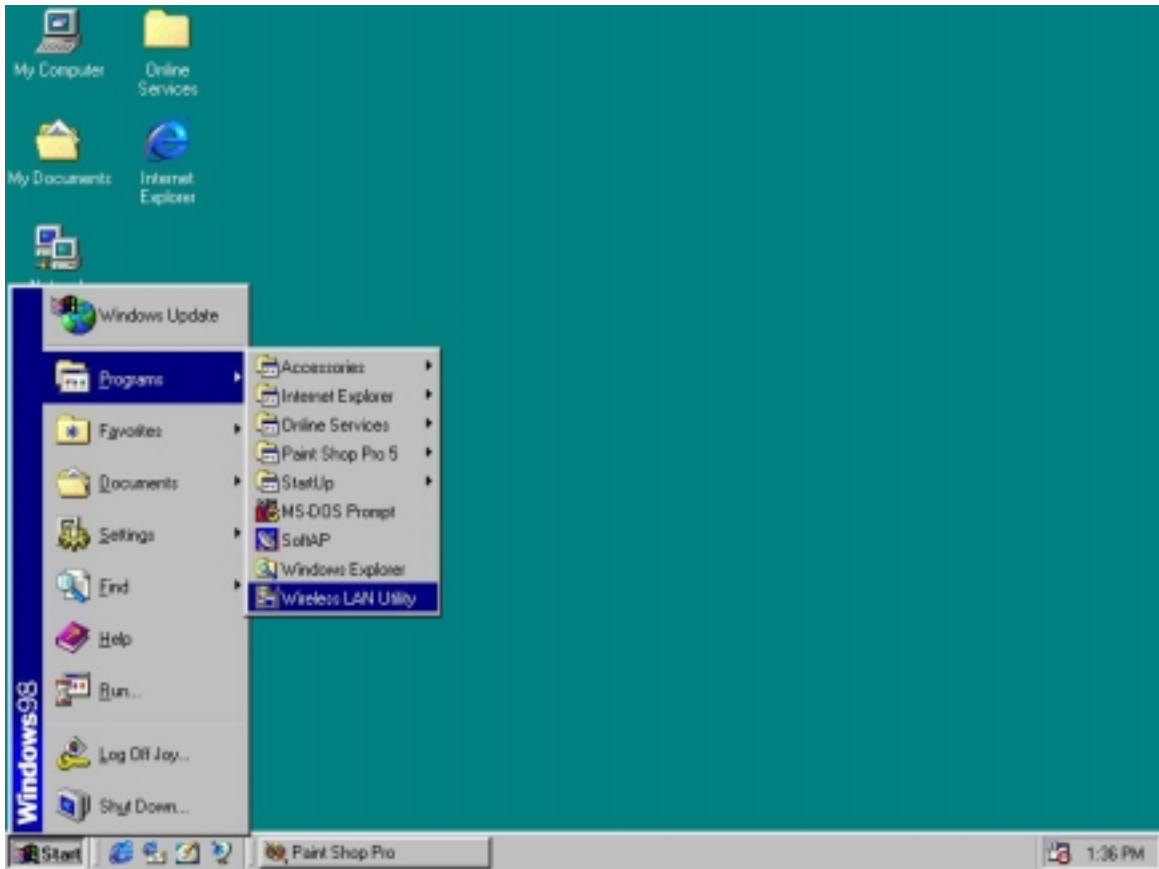
A. Main Menu

A LANEscape wireless LAN adapter hardware information window will show on the top of the screen (Fig 5.2) while Main Menu screen is displayed. In this window, you will see current adapter configuration information, that is, the MAC address, firmware version, frequency domain, BSS joined, current channel and ESS ID of the adapter that you installed in your notebook.

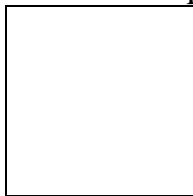
The Main Menu screen shows all main functions of the LANEscape Utility:

- [Network Configuration]** - LANEscape Utility provides a screen for you to configure parameters of the LANEscape wireless LAN adapter for your wireless network environment. upgrading the firmware in the wireless adapter.
- [Exit]** - End the execution of LANEscape Utility.

1. Click **Start**, point to **Programs** and run **WLA Utility**.



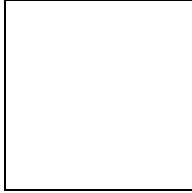
2. Main menu appears.



B. Network Configuration Screen

The Network Configuration screen allows you to check and modify current configuration of the LANEscape wireless LAN adapter. The user-configurable parameters are divided into several groups: **ESSID, Network Type, RTS Threshold, Frag Threshold Use WEP, Power Save** and **Transmission Rate..**

Fig. Network Configuration



B-1. ESS ID PARAMETERS

ESS ID: Input a digit ESS ID while the roaming feature is enabled (“ANY” is default setting). The ESS ID is the wireless network ID, which allows the XI-300 to join the Access Points set as of the same ESS ID.

B-2. NETWORK TYPE PARAMETERS

Station Operation Mode: Set the station operation mode to **Ad-Hoc** (without Access Point) or **Infrastructure** (with Access Point, default setting).

If you are using the XI-300 only for communication between PCs, choose **Ad-Hoc**. If you are using XI-300 to join the local area network infrastruce through Access Point, choose **Infrastructure**.

Ad-Hoc Default Channel: Select the channel number as your operating radio channel. Please note that the Ad-hoc network operates successfully only when all the XI-300s or other Network Interface Cards in the Ad-hoc network are set as in the same channel.

NOTE: If you have Lucent 11MB Access Point, You can use XI-300 to connect.

B-3. RTS Threshold

If you aren’t concerned with the “Hidden Node Problem”, please select the “Disable” item

B-4. Use WEP

If you require high security in transmission, please select the “Enable” item and set encryption key.

B-5. Power Save

If you always let your XI-300 work in wireless LAN long time , you may select the “Enable” item to make power management.

B-6. Transmit Rate

If you need your XI-300 to transmit in long distance or bad environment, you may adjust transmit rate to make the better performance.

NOTE: Because Zcom still test and modify this version, some parameter Zcom only provide demo and don't support customer to use. If customers want to get advance information and complete version, please contact Zcom sales Dept. or go to URL: www.zcom.com.tw.

