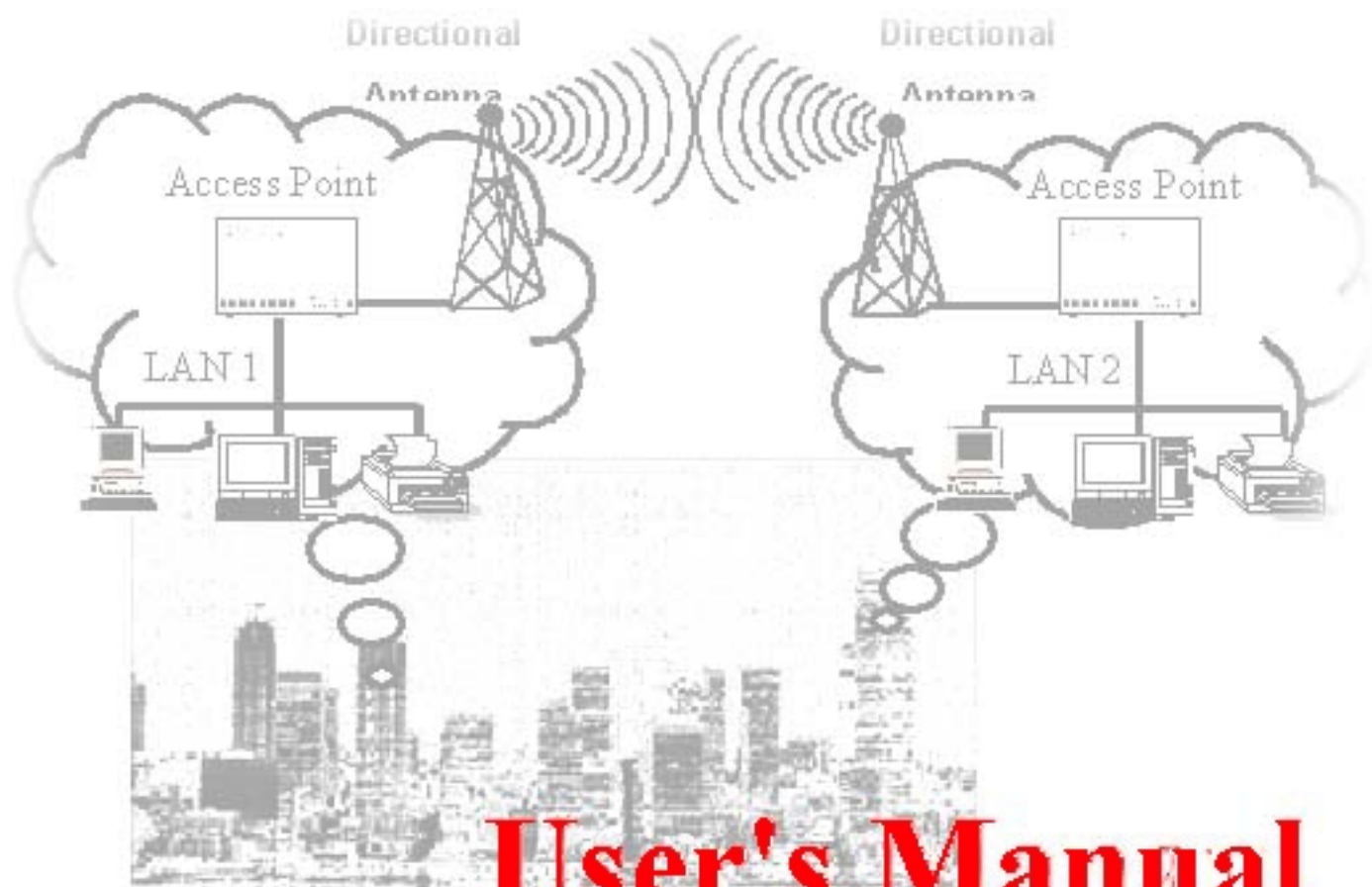




LANEscape™ WH2330

PCMCIA Adapter



User's Manual

Z-Com, Inc.

FCC Information

This equipment has been tested and found to comply with the limits for a Class B digital devices pursuant to part 15 of the FCC Rules. These limits are designed to provide reasonable protection against harmful interference when the equipment is operated in a commercial environment.

This equipment generates, uses, and can radiate radio frequency energy and, if not installed and used in accordance with the instruction manual, may cause harmful interference to radio communication.

Operation of this equipment in residential area is likely to cause harmful interference in which case the user will be required to correct the interference at this own expense.

The user should not modify or change this equipment without written approval of the company. Modification could make invalid any authority to use this equipment.

It is unsafe to work under circumstances in which the RF exposure exceeds recommended amount. To prevent the situation happening, people who work with the antenna should be aware of the following rules:

1. Install the antenna so that a 20 cm distance can be kept from the antenna.
2. While installing the antenna in the location, please do not turn on the power of the wireless card.
3. While the device is working, please do not contact the antenna.

Copyright

Copyright © 1998 Z-Com, Inc., all rights reserved. No part of this publication may be reproduced, adapted, stored in a retrieval system, translated into any language, or transmitted in any form or by any means without the written permission of Z-Com, Inc.

Trademarks

LANEscape and Z-Com are trademarks of Z-Com, Inc., all other trademarks throughout this manual are the property of their respective companies.

Limited Warranty

In no event will Z-Com be liable for any damage, including loss of data or profits, cost of cover, or other incidental, consequential or indirect damages arising from the installation, maintenance, use, performance, failure or interruption of Z-Com's products, whatever caused and on any theory of liability. This limitation will apply even if Z-Com has been advised of the possibility of such damage.

Technical Support

Address: 7F-2, No.9, Prosperity 1st Rd., Science-Based Industrial Park, Hsinchu, Taiwan

Tel. No.: +886-3-5777364

Fax No.: +886-3-5773359

E-mail: support@zcom.com.tw

Web Site: <http://www.zcom.com.tw>

About This Manual

The purpose of this manual is to assist users in the setup of the product LANEscape WH2330, the Wireless LAN PCMCIA. This manual, revised as version 2.0 in 1999, includes procedures that will help users to avoid unforeseen problems.

Contents

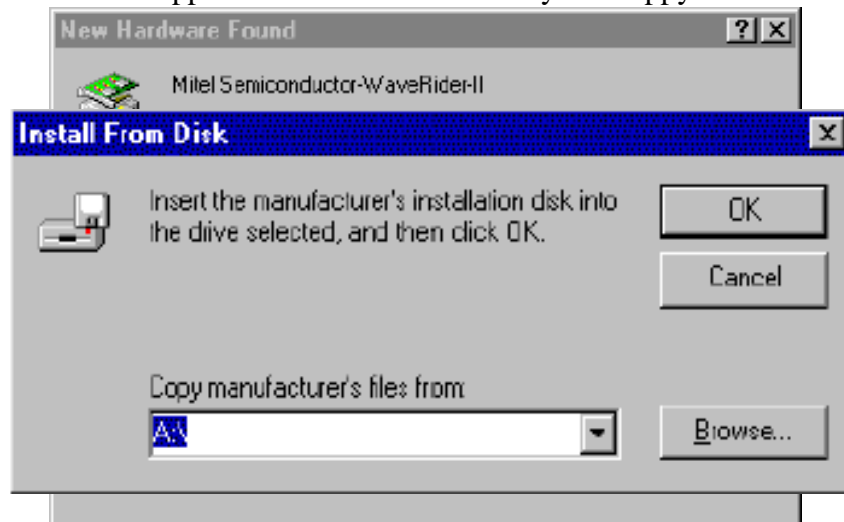
Chapter 1 Windows 95 Set-up and Configuration	5
1-1 Installing the WH2330 Windows 95 Network Driver	5
1.2 Re-installing / Upgrading the WaveRider-II network drivers.	6
1.3 Operational / Optional Characteristics of the WH2330	8
Chapter 2 Using the WH2330 Upgrade Utility	11
Appendix WH2330 Specifications	12

Chapter 1 Windows 95 Set-up and Configuration

1-1 Installing the WH2330 Windows 95 Network Driver

The WH2330 (Mitel Semiconductor WaveRider-II) network adapter is a plug and play adapter. If the driver is being installed for the first time, then the installation is simple and straightforward. If the WH2330 is being upgraded or re-installed then please see Section 1.2.

- Insert the WH2330 into a PCMCIA slot of your computer. If the computer is off then turn it on and proceed to log in if necessary.
- The Windows 95 will automatically detect the Mitel Semiconductor WaveRider-II and will prompt you to install the software for it. The option to install the software from the Manufacturer's Disk should be chosen, this is usually the default.
- Place the driver disk supplied with the WH2330 in your floppy drive and select the correct



drive letter from the pull down box, i.e. for drive a:

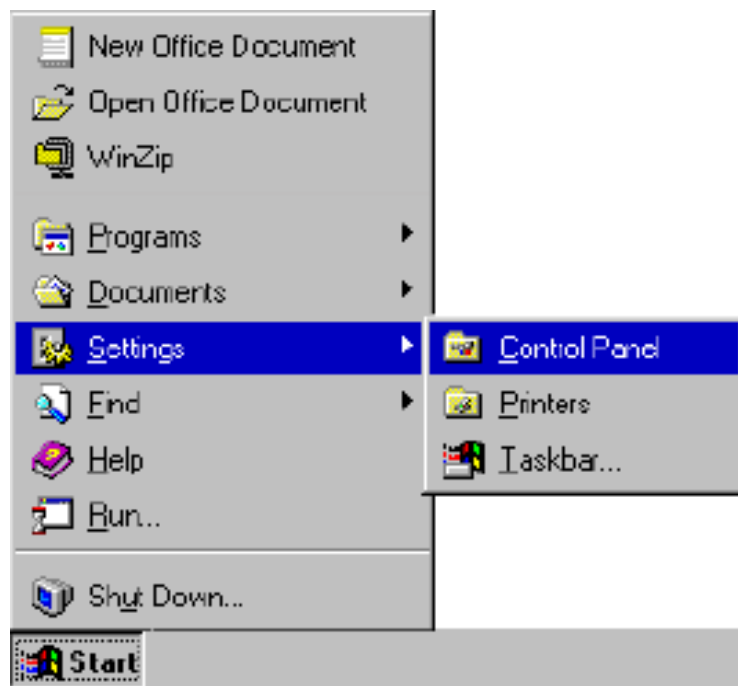
- Click on the “OK” button and the drivers will be installed for the WH2330. If the PCMCIA slots have the sound enabled, then a low-high tone sequence should be heard.
- The WH2330 will be configured for operation as a Slave unit by default. If you have a Master station running, then the network should be available to you. If you want to use the network in an ad-hoc way- or you are setting up a new network , then read the Chapter on the optional operating characteristics of the WH2330 network adapter.

For more information on setting up optional parameters of the WH2330 adapter see Section 1.3.

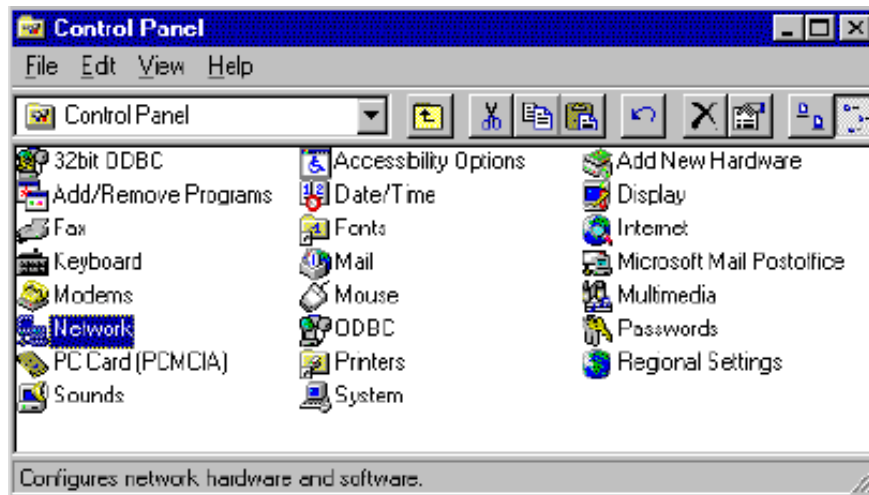
1.2 Re-installing / Upgrading the WaveRider-II network drivers.

In order to re-install or upgrade the Windows 95 network drivers for the WH2330 adapter, it is necessary to uninstall the driver for the WH2330. Please follow the steps below:

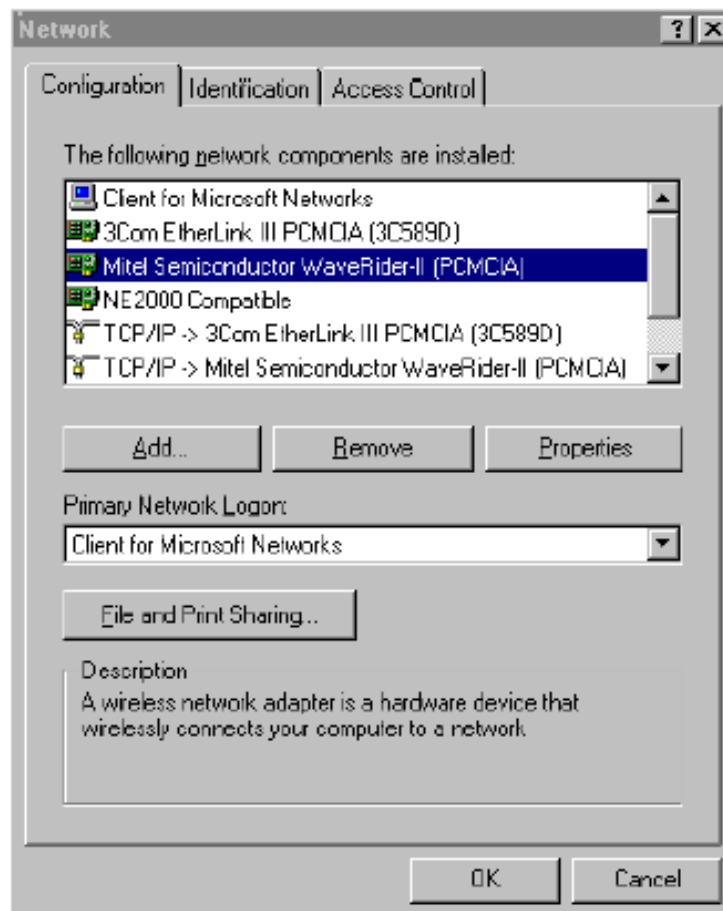
- From the Start menu, select Settings, Control Panel.



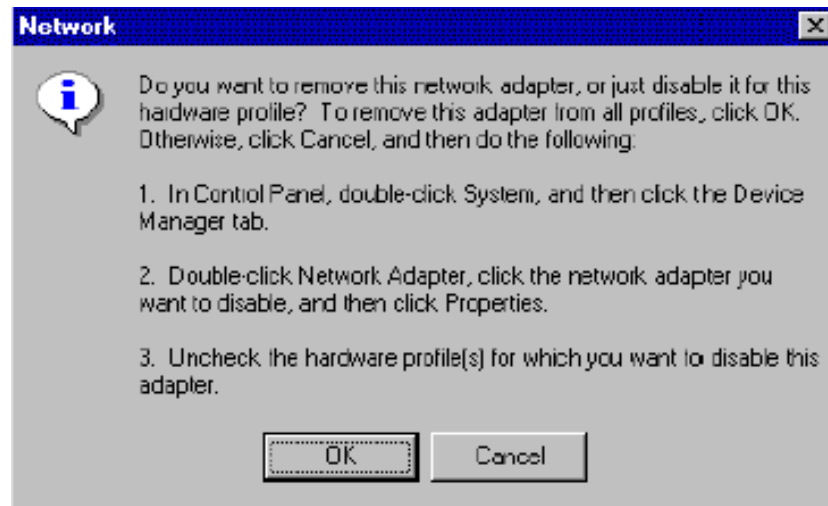
- From the control panel select Network.



- From the Network control panel, select the Mitel Semiconductor WaveRider-II adapter. Be careful to select the correct adapter and make sure that the picture of an adapter is next to the description of the adapter, as shown below:



- Click on the “Remove” button. If you have hardware profiles installed, you will be asked if you want to remove all occurrences of the adapter, as shown below. Click on the “OK” button to uninstall the driver.



- Finally click on “OK” in the Network set-up Panel. The driver for the WH2330 will then be removed. If Windows prompts you to re-start your computer, you can re-boot it, or you can safely click on the “No” button and continue to install the new drivers.
- In order to install the new drivers, unplug the WH2330 card, if plugged in and then insert it into the socket again. Follow the instructions for a new installation.

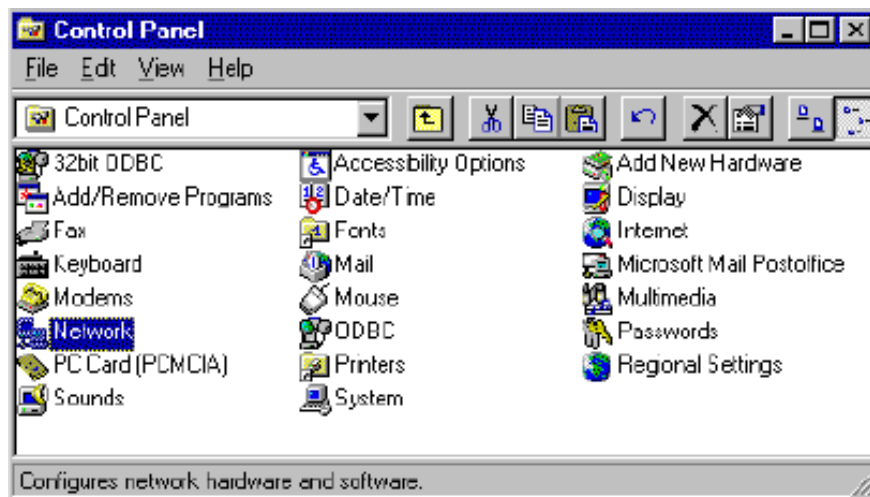
1.3 Operational / Optional Characteristics of the WH2330

In order to change the operational/optional characteristics of the WH2330 adapter, the Advanced setting tab of the WH2330 must be found. Follow these steps below:

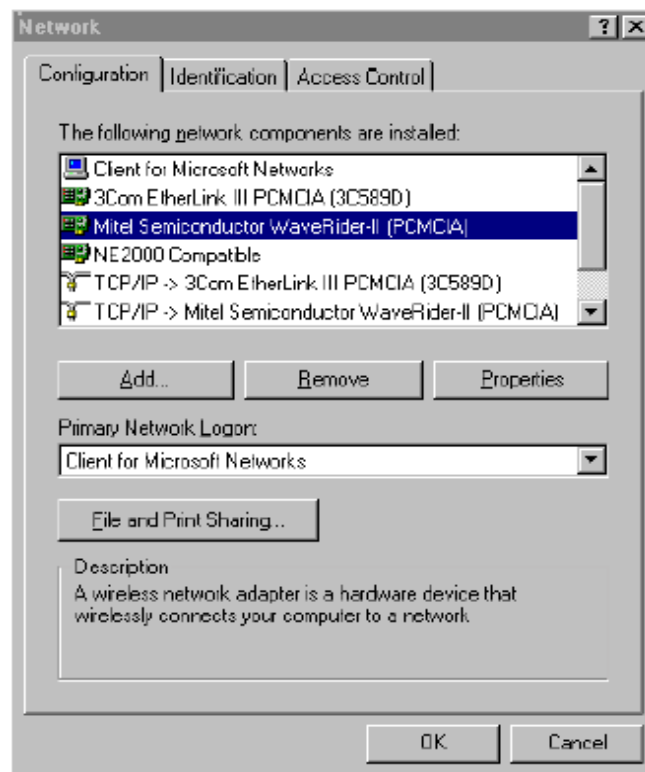
- From the Start menu, select Settings, Control Panel.



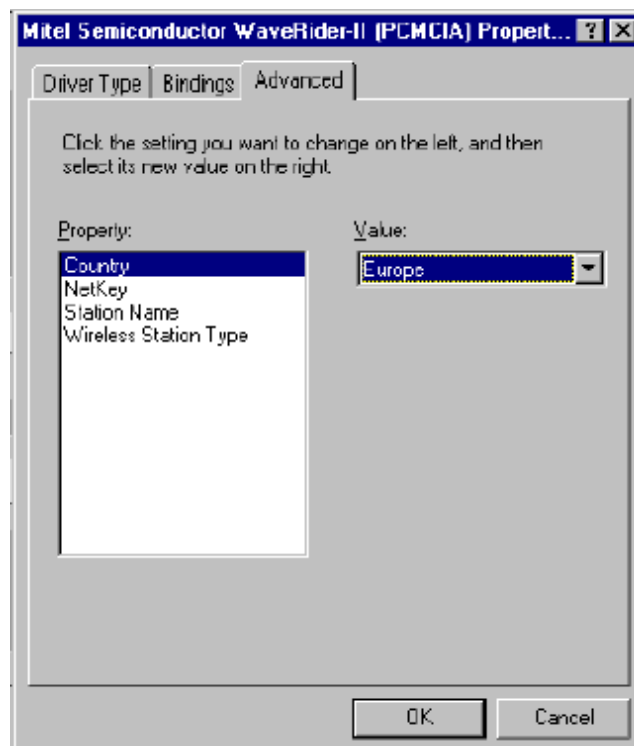
- From the Control Panel select Network.



- From the Network, select the Mitel Semiconductor WaveRider-II adapter. Be careful to select the correct adapter and make sure that the picture of an adapter is next to the description of the adapter, as shown below.



- Click on the Properties button to display the properties of the adapter.
- Click on the Advanced Tab at the top of the panel to display the advanced settings for the adapter.



- The Advanced settings for the adapter can now be configured for your network. Software

Chapter 2 Using the WH2330 Upgrade Utility

The WH2330 upgrade utility (upgrade.exe) is a Windows application which allows users to upgrade the Media Access Control (MAC) software held in the WH2330 adapter. We may, from time to time, issue new versions of the MAC software in order to add new functions or correct problems.

Upon starting the Upgrade utility (via the Windows 95 Start Menu or Explorer), you will be prompted to enter the name of the new MAC software image file. Enter the location and name of the file, and press the “OK” button. The utility will then re-program the WH2330 adapter. The re-programming must be allowed to complete or the WH2330 will stop functioning. For this reason Windows 95 will not respond during the programming sequence. The upgrade utility will indicate if the re-programming has been successful. If the programming fails, please contact the supplier for further technical support.

Appendix WH2330 Specifications

Interface	PCMCIA
Range	Over 150 meters line of sight / 50 meters in an office environment
Receiver Sensitivity	Typically –83dBm
Tx/Rx/Tx Switching Time	Maximum 224us
Channel Hopping Time	Maximum 224us
Data Rate	1 Mbits/sec across air
MAC Protocol	GPSP CSMA/CA
Frequency Band	2.4~2.4835 GHz
Typical Output Power	+17dBm
Supply Voltage	5V Operation
Size	PCMCIA type 2
Operating Temperature Range	0 ~55
Storage Temperature Range	-20 ~70